



**DENVER**  
THE MILE HIGH CITY

# CDOT IGA I-25/Santa Fe/Alameda Interchange Project 2015

## Council Committee Update – April 6, 2016

FOR CITY SERVICES VISIT | CALL  
**DenverGov.org** | **311**



# Project Overview





## Impacts at Vanderbilt Park

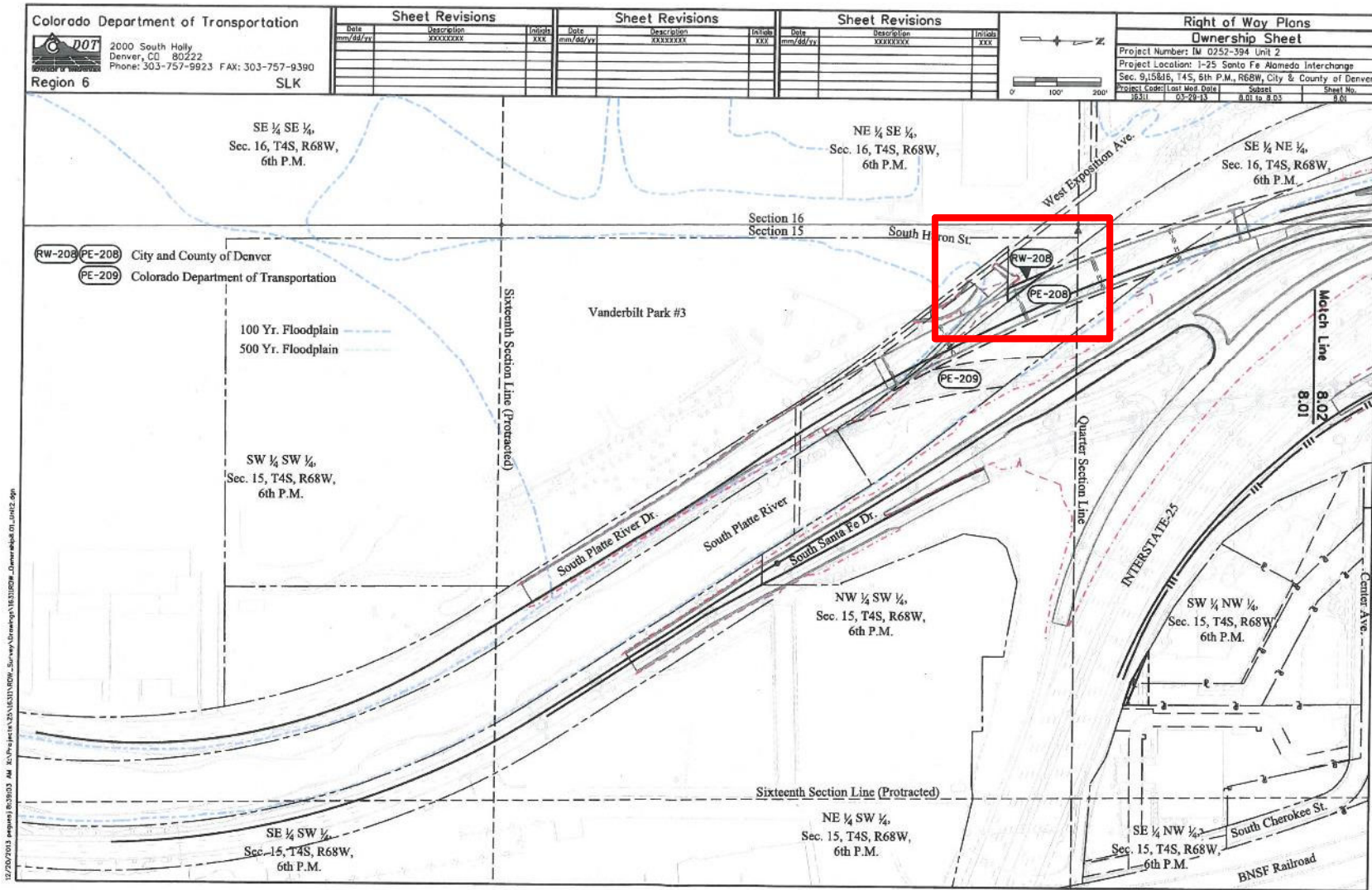


1. 1,345 SF parcel of DPR land for bridge pier - 4(f) and 6(f) requirements)
2. Abandon existing easement over River + grant new easement
3. Remove existing bridge
4. Reconstruct SPR Trail underpass at SB Santa Fe bridge to DPR Standard
5. Reconstruct West Exposition



**DENVER**  
THE MILE HIGH CITY

# CDOT IGA I-25/SANTA FE/ALAMEDA

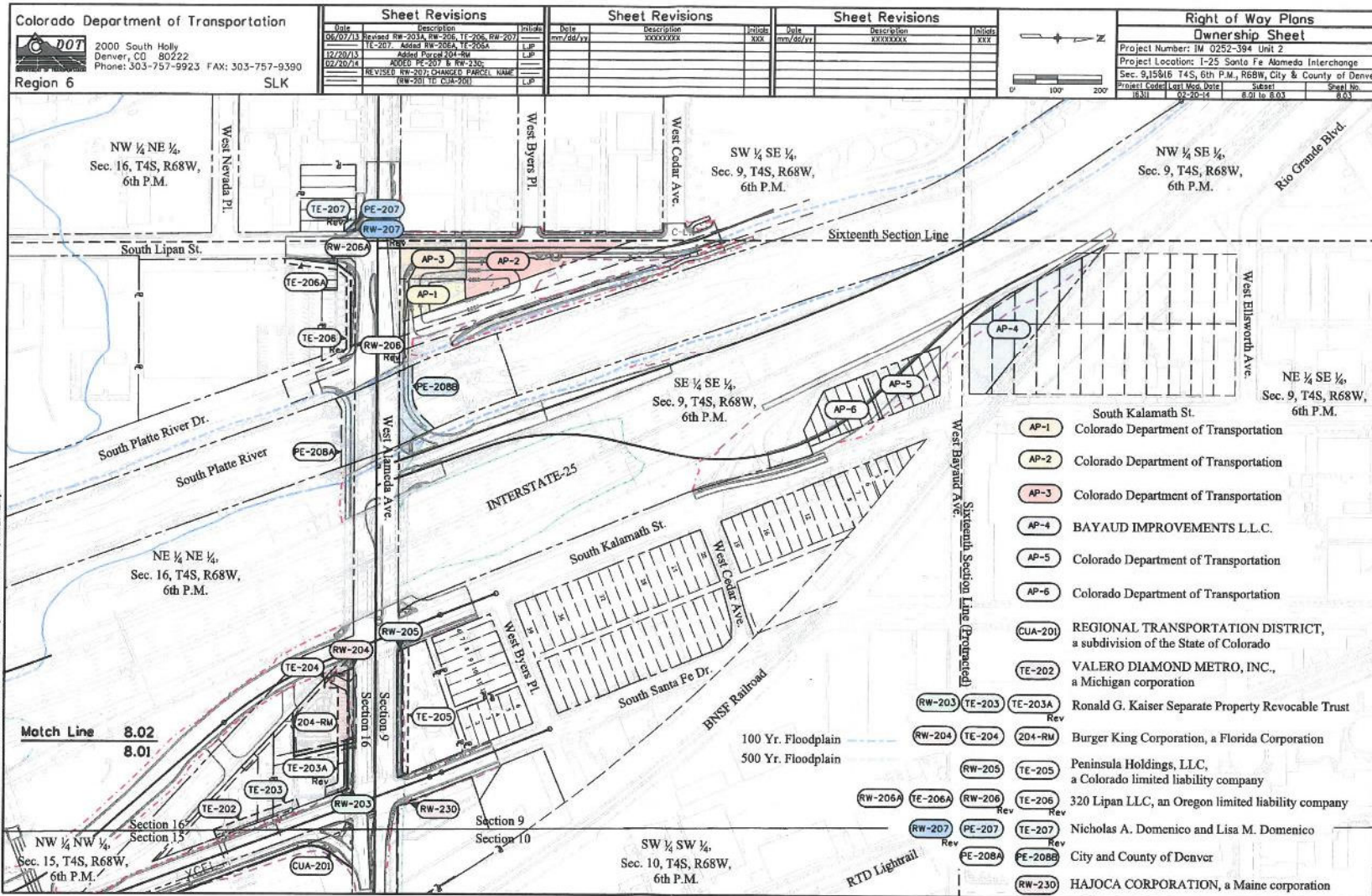




## Impacts at Alameda Ave



1. Close SPR Drive and vacate ROW
2. Design + construct water quality facility and SPR Trail on Triangular Parcel and convey to City
3. Dedicate 1,345 sf in Triangular Parcel as DPR land
4. Reconstruct S. Lipan Street
5. Reconstruct SPR Trail underpass at Alameda bridge to DPR Standard
6. Construct sidewalk and curb ramp at SE Valverde Park
7. Dedicate additional ROW along Alameda
8. Expand Alameda bridge easement







**DENVER**  
THE MILE HIGH CITY

Questions?