



DENVER COLISEUM

Exterior Comprehensive Sign Masterplan

*Prepared for Arts & Venues Denver
March 7, 2013*



Exterior Comprehensive Sign Masterplan

DENVER COLISEUM

DENVER COLISEUM

PROJECT

Arts & Venues- Denver

CLIENT

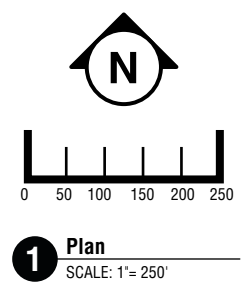
JG, DT, JW

TEAM JOB NO.

GENERAL NOTES:

- Submittals required as per the Qualities & Submittals section of this document.
- These drawings express visual design intent only. Final engineering, materials and fabrication shall remain the responsibility of the fabricator.
- All content of this document is subject to the design intent requirements outlined elsewhere in the document. Refer to the Fabricator Performance & Material Requirements, Quantities & Submittals, Materials & Finishes and Fonts & Symbols sections this document for further details.

ORIGINAL ISSUE:	March 7, 2013
REVISIONS:	



Sign Inventory

Page No.	Sign Type	Quantity	Unit Cost	Ext'd Cost	Description
	Primary Project I.D.				
1	East Side Sign/Display	1			Internally illuminated letterforms on support track. Full color Electronic Message Center display, by Others.
2	West Side Sign/Display	1			Internally illuminated letterforms on support track. Full color Electronic Message Center display, by Others.
3	Entry I.D.	4			Panel signs with first surface vinyl/paint graphics.
4	Facility I.D.	1			Cut-out letterforms attached to horizontal metal sign band. Non-illuminated.
5	Freestanding Monument	1			Cabinet construction monument with heavy stucco texture finish. Internally illuminated acrylic face letters, both sides. Full color EMC display, both sides, by Others.
6	Primary Changeable Banner Program	1 loc.			Attachment system for banners added to building on East face. All new banners will work within new system.

Location Plan & Sign Inventory

Exterior Comprehensive Sign Masterplan

DENVER COLISEUM

DENVER COLISEUM

PROJECT

Arts & Venues- Denver

CLIENT

JG, DT, JW

TEAM JOB NO.

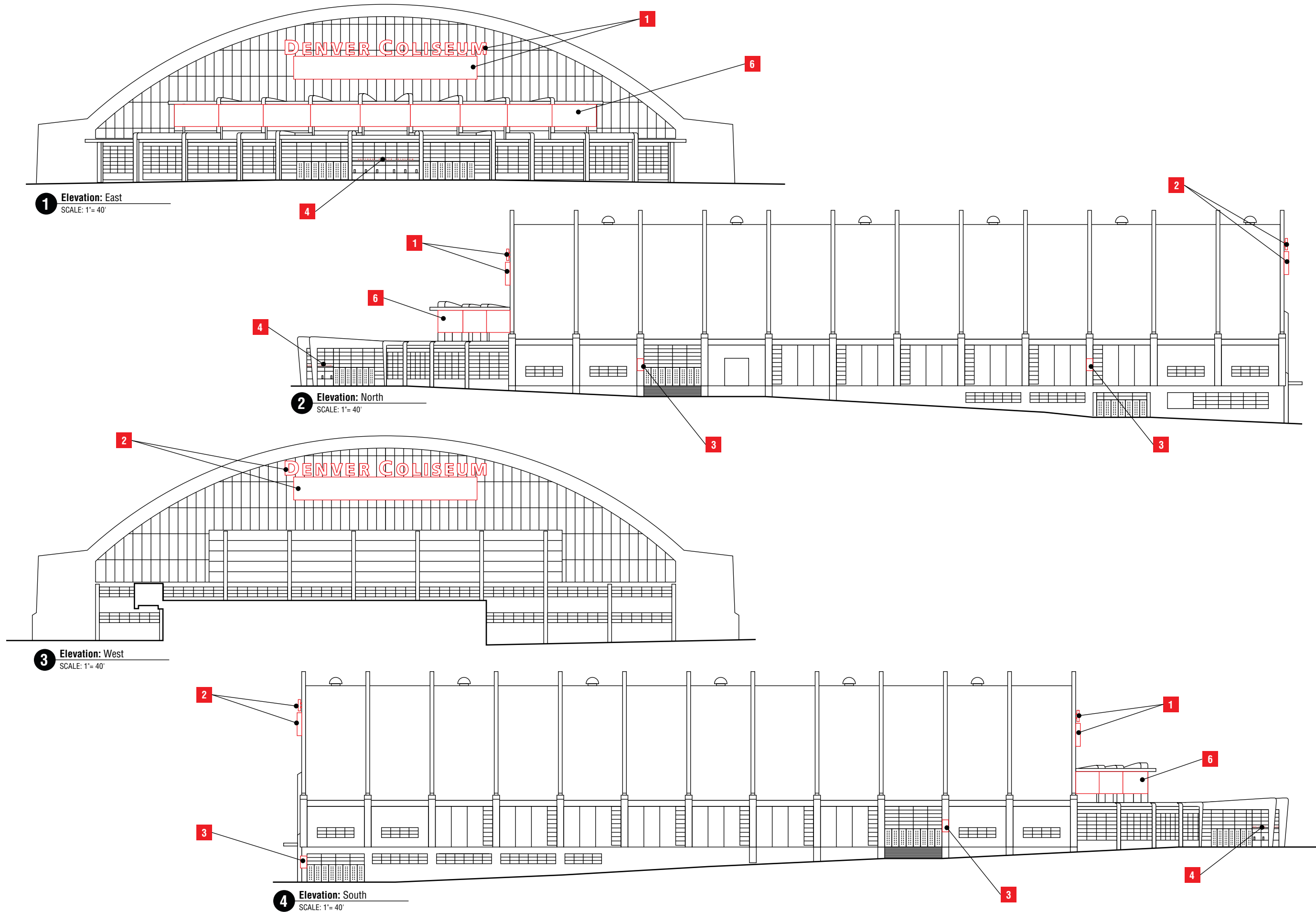
GENERAL NOTES:

- Submittals required as per the Qualities & Submittals section of this document.
- These drawings express visual design intent only. Final engineering, materials and fabrication shall remain the responsibility of the fabricator.
- All content of this document is subject to the design intent requirements outlined elsewhere in the document. Refer to the Fabricator Performance & Material Requirements, Quantities & Submittals, Materials & Finishes and Fonts & Symbols sections this document for further details.

ORIGINAL ISSUE:	March 7, 2013
REVISIONS:	

Primary Project I.D.

East Side Sign/Display



Exterior Comprehensive Sign Masterplan

DENVER COLISEUM

DENVER COLISEUM

PROJECT

Arts & Venues- Denver

CLIENT

JG, DT, JW

TEAM JOB NO.

GENERAL NOTES:

- Submittals required as per the Qualities & Submittals section of this document.
- These drawings express visual design intent only. Final engineering, materials and fabrication shall remain the responsibility of the fabricator.
- All content of this document is subject to the design intent requirements outlined elsewhere in the document. Refer to the Fabricator Performance & Material Requirements, Quantities & Submittals, Materials & Finishes and Fonts & Symbols sections this document for further details.

ORIGINAL ISSUE:	March 7, 2013
REVISIONS:	

Primary Project I.D.

East Side Sign/Display



Existing externally illuminated letters centered on 3-rail track support.
 Remove lights and letters.

Existing



Remove existing cantilevered spotlights, patch building as required.
 New cabinet construction letterforms, painted **P.1** (Black) or **P.2** (Coliseum Dk Blue), with internal LED illumination and acrylic faces, color **V.1** (Coliseum Bright Blue).

Letters attach to horizontal rail track painted to match building, **P.4** (Coliseum Bldg. Beige).

Letters to be relocated approx. 9' higher to accommodate new Dynamic Display below. Display can be mounted just below existing lowest track rail.

10' x 80' Dynamic Display (by Daktronics) to be installed below relocated letters and above concrete fins of entry canopy. Frequency of Change: Sign code states: The LEDs on any such device may not flash, blink or fluctuate, or change in any manner more frequently than once per hour, must be dimmed at dusk and may not be lit between the hours of 1:00am and 6:00am.

Letters: 6'-2" x 87'-9" = 540 sq./ft.
 Display: 10'-0" x 80'-0" = 800 sq./ft.
 1340 sq./ft. total

2 Elevation
 SCALE: 1/16" = 1'-0"

Exterior Comprehensive Sign Masterplan

DENVER COLISEUM

DENVER COLISEUM

PROJECT

Arts & Venues- Denver

CLIENT

JG, DT, JW

TEAM JOB NO.

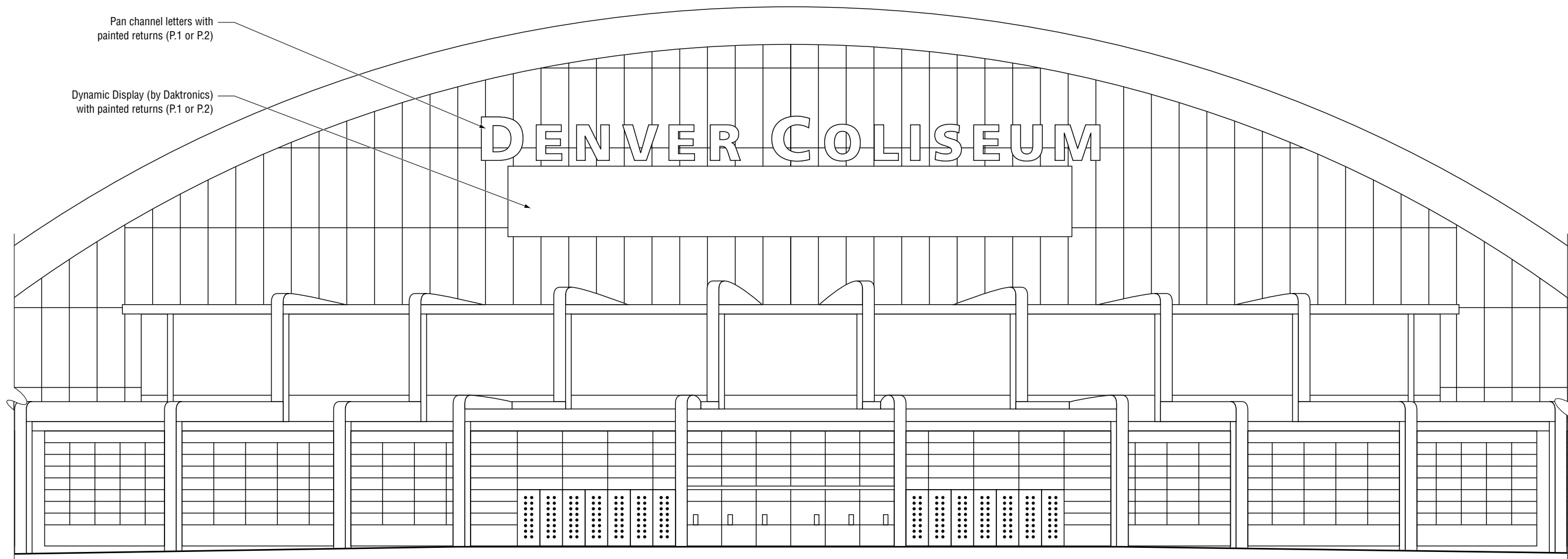
GENERAL NOTES:

- Submittals required as per the Qualities & Submittals section of this document.
- These drawings express visual design intent only. Final engineering, materials and fabrication shall remain the responsibility of the fabricator.
- All content of this document is subject to the design intent requirements outlined elsewhere in the document. Refer to the Fabricator Performance & Material Requirements, Quantities & Submittals, Materials & Finishes and Fonts & Symbols sections this document for further details.

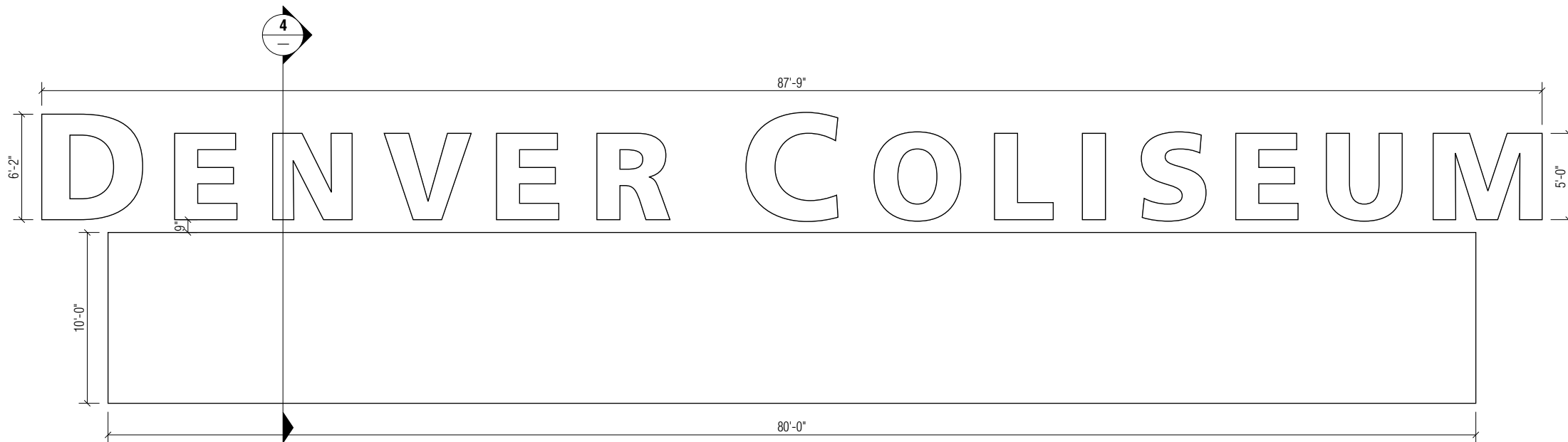
ORIGINAL ISSUE:	March 7, 2013
REVISIONS:	

Primary Project I.D.

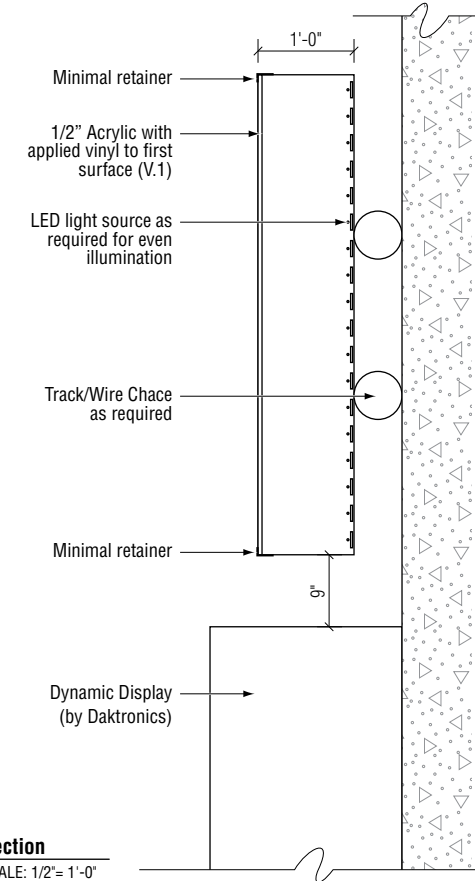
East Side Sign/Display



1 Elevation
 SCALE: 1/16" = 1'-0"



2 Elevation
 SCALE: 1/8" = 1'-0"



3 Section
 SCALE: 1/2" = 1'-0"

Exterior Comprehensive Sign Masterplan

DENVER COLISEUM

DENVER COLISEUM
 PROJECT

Arts & Venues- Denver
 CLIENT

JG, DT, JW
 TEAM JOB NO.

GENERAL NOTES:

- Submittals required as per the Qualities & Submittals section of this document.
- These drawings express visual design intent only. Final engineering, materials and fabrication shall remain the responsibility of the fabricator.
- All content of this document is subject to the design intent requirements outlined elsewhere in the document. Refer to the Fabricator Performance & Material Requirements, Quantities & Submittals, Materials & Finishes and Fonts & Symbols sections this document for further details.

ORIGINAL ISSUE:	March 7, 2013
REVISIONS:	

Primary Project I.D.

West Side Sign/Display



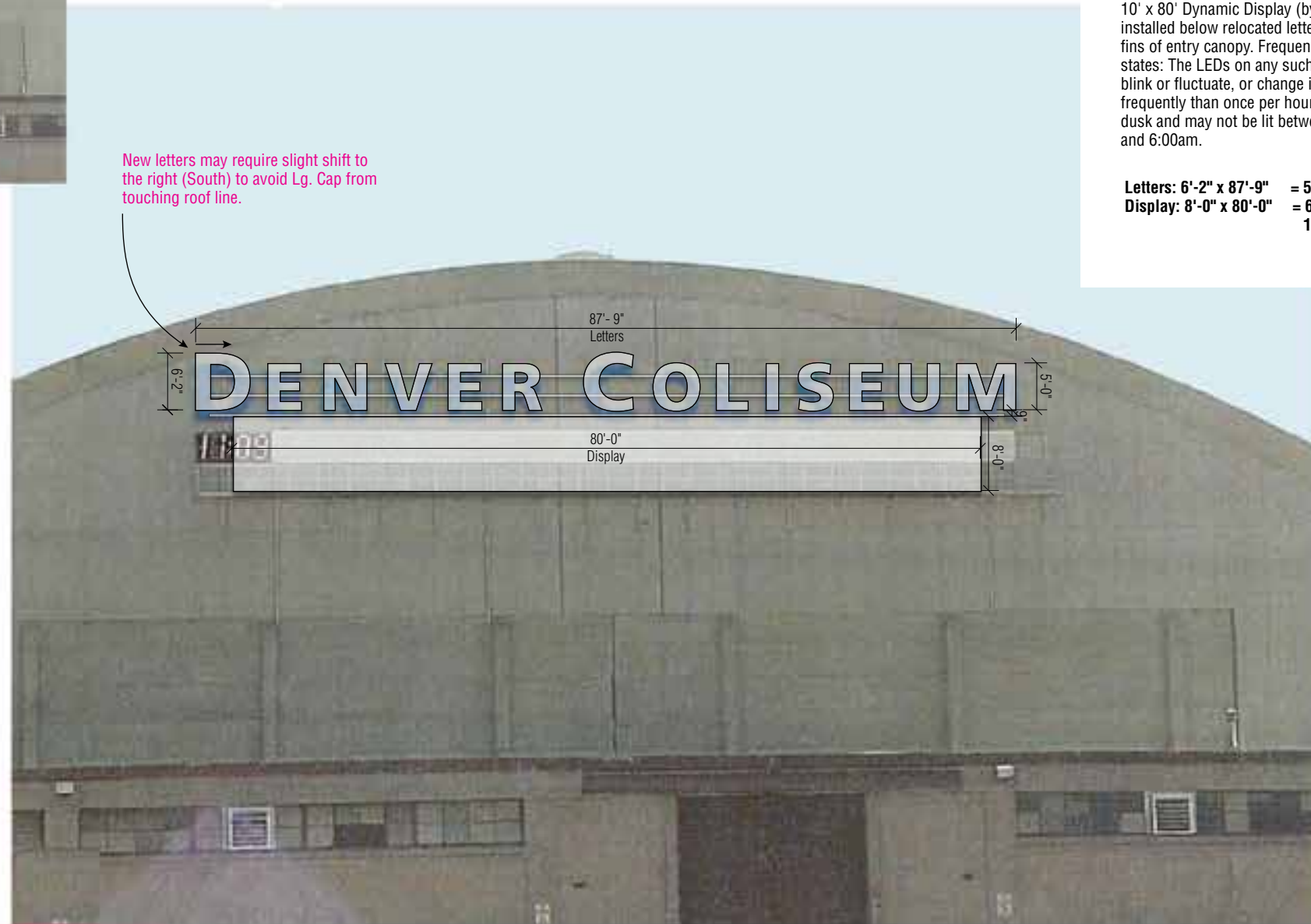
Existing

Existing externally illuminated letters centered on 3-rail track support.

Time/Temp display, manual display board and catwalk to be removed.

All new signage to be no lower than existing catwalk. **Dotted line.**

New letters may require slight shift to the right (South) to avoid Lg. Cap from touching roof line.



2 Elevation
 SCALE: 1/16" = 1'-0"

Remove existing cantilevered spotlights, patch building as required.

New cabinet construction letterforms, painted **P.1** (Black) or **P.2** (Coliseum Dk Blue), with internal LED illumination and acrylic faces, color **V.1** (Coliseum Bright Blue).

Letters attach to horizontal rail track painted to match building, **P.4** (Coliseum Bldg. Beige).

Letters to be relocated approx. 9" higher to accommodate new Dynamic Display below. Display can be mounted just below existing lowest track rail.

10' x 80' Dynamic Display (by Daktronics) to be installed below relocated letters and above concrete fins of entry canopy. Frequency of Change: Sign code states: The LEDs on any such device may not flash, blink or fluctuate, or change in any manner more frequently than once per hour, must be dimmed at dusk and may not be lit between the hours of 1:00am and 6:00am.

Letters: 6'-2" x 87'-9" = 540 sq./ft.
Display: 8'-0" x 80'-0" = 640 sq./ft.
1180 sq./ft. total

Exterior Comprehensive Sign Masterplan

DENVER COLISEUM

DENVER COLISEUM

PROJECT

Arts & Venues- Denver

CLIENT

JG, DT, JW

TEAM JOB NO.

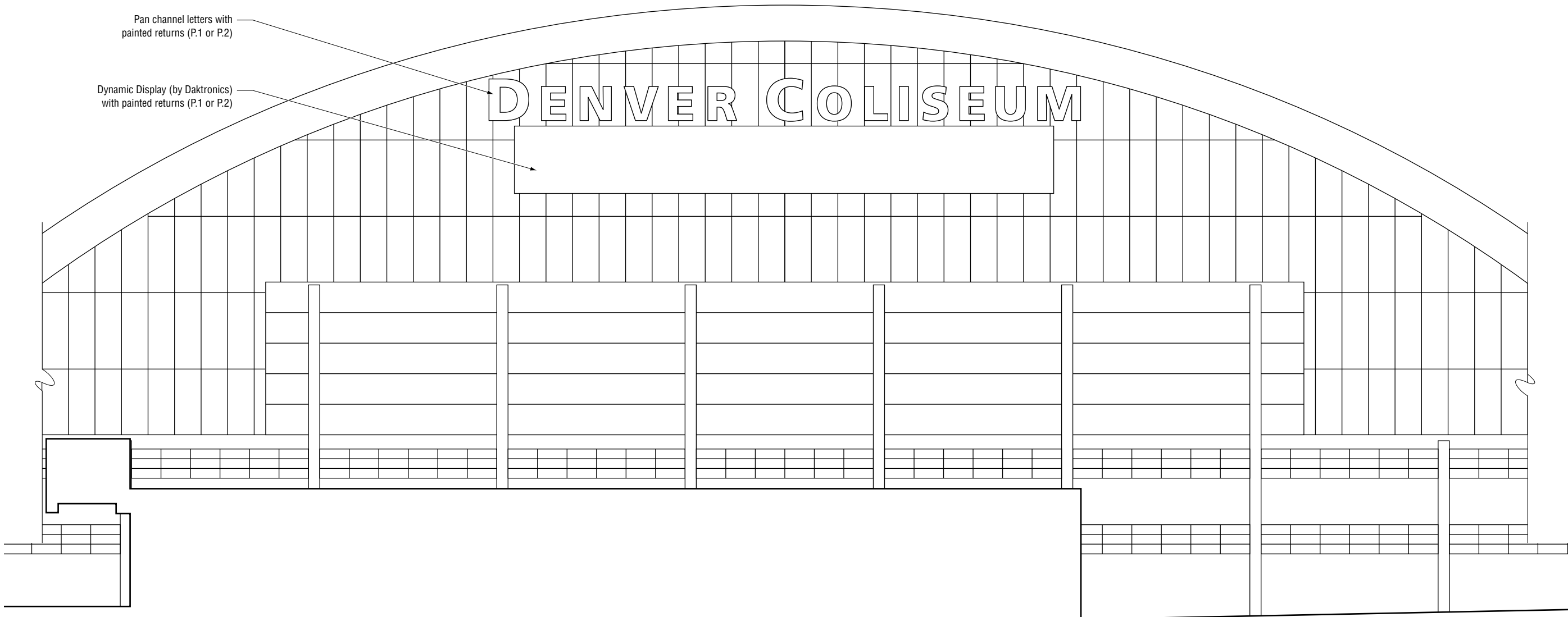
GENERAL NOTES:

- Submittals required as per the Qualities & Submittals section of this document.
- These drawings express visual design intent only. Final engineering, materials and fabrication shall remain the responsibility of the fabricator.
- All content of this document is subject to the design intent requirements outlined elsewhere in the document. Refer to the Fabricator Performance & Material Requirements, Quantities & Submittals, Materials & Finishes and Fonts & Symbols sections this document for further details.

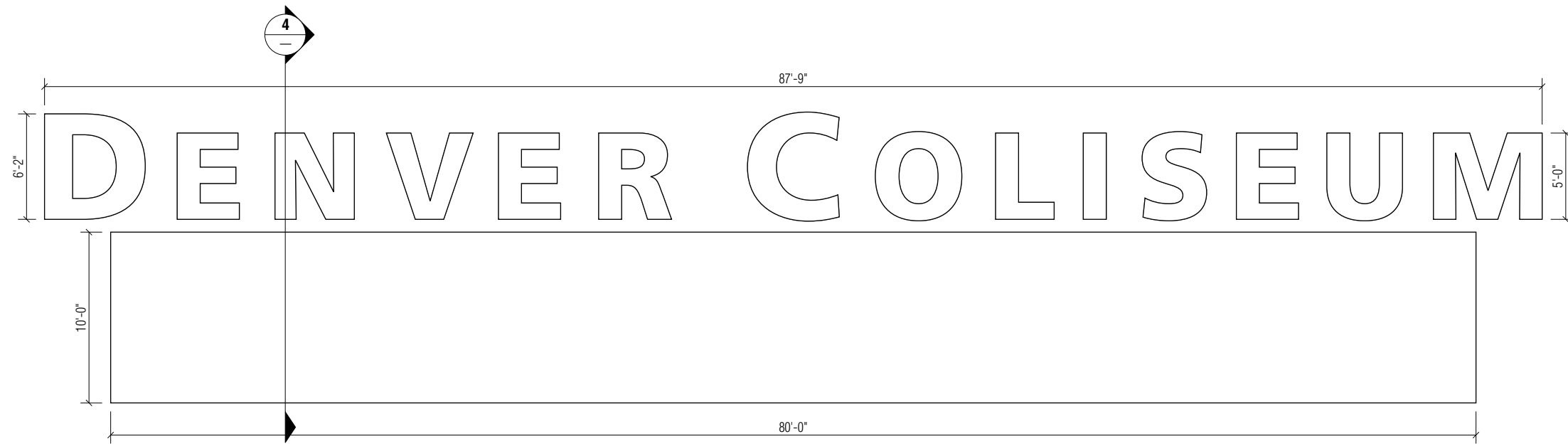
ORIGINAL ISSUE:	March 7, 2013
REVISIONS:	

Primary Project I.D.

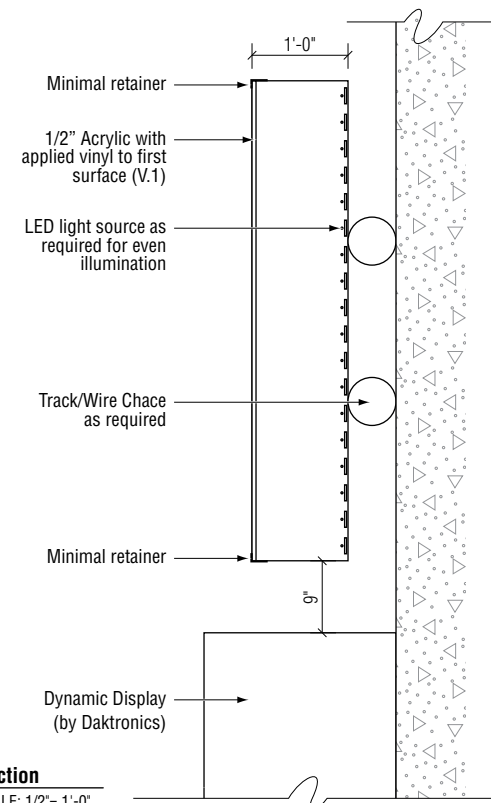
West Side Sign/Display



1 Elevation
 SCALE: 1/16" = 1'-0"



2 Elevation
 SCALE: 1/8" = 1'-0"



3 Section
 SCALE: 1/2" = 1'-0"

Exterior Comprehensive Sign Masterplan

DENVER COLISEUM

DENVER COLISEUM
 PROJECT

Arts & Venues- Denver
 CLIENT

JG, DT, JW
 TEAM JOB NO.

GENERAL NOTES:

- Submittals required as per the Qualities & Submittals section of this document.
- These drawings express visual design intent only. Final engineering, materials and fabrication shall remain the responsibility of the fabricator.
- All content of this document is subject to the design intent requirements outlined elsewhere in the document. Refer to the Fabricator Performance & Material Requirements, Quantities & Submittals, Materials & Finishes and Fonts & Symbols sections this document for further details.

ORIGINAL ISSUE:	March 7, 2013
REVISIONS:	

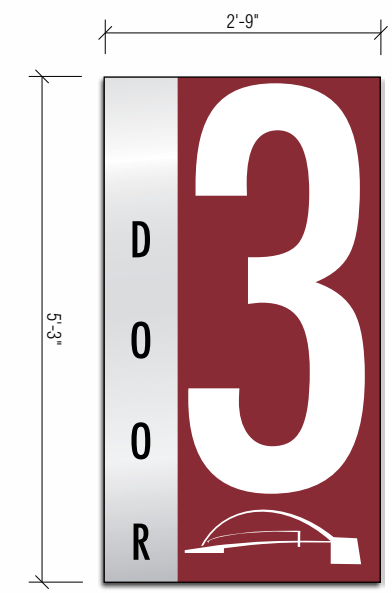
Entry I.D.



1 Photo Documentation
 SCALE: NTS
 Other Entries



2 Elevation
 SCALE: 1/4" = 1'-0"



3 Elevation Detail
 SCALE: 1/2" = 1'-0"

2'-9" x 5'-30" = 14.5 sq./ft. each

Exterior Comprehensive Sign Masterplan

DENVER COLISEUM

DENVER COLISEUM

PROJECT

Arts & Venues- Denver

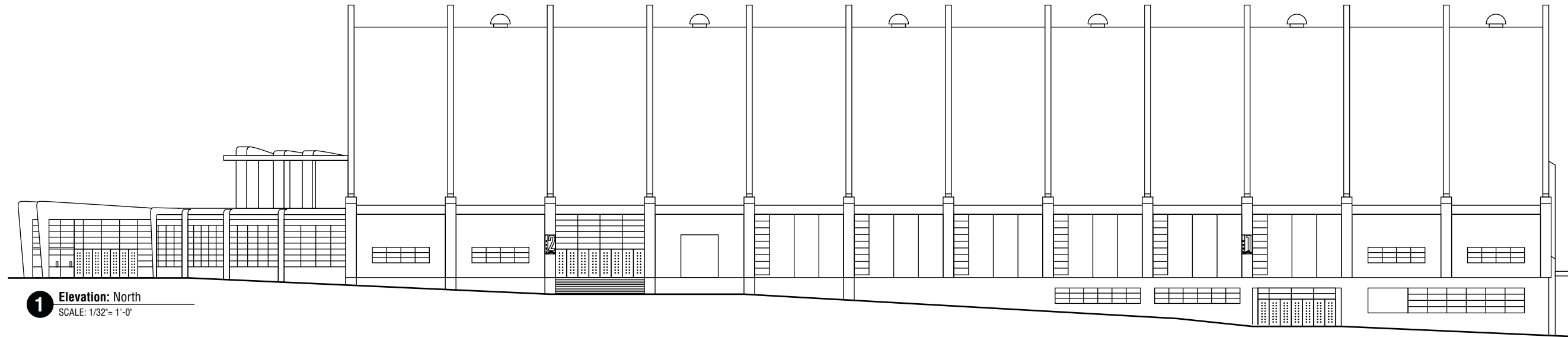
CLIENT

JG, DT, JW

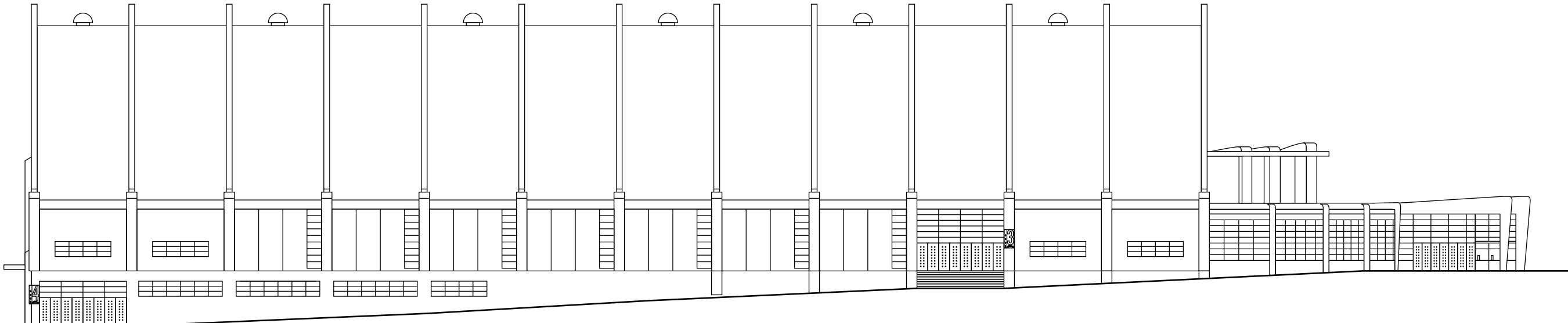
TEAM JOB NO.

GENERAL NOTES:

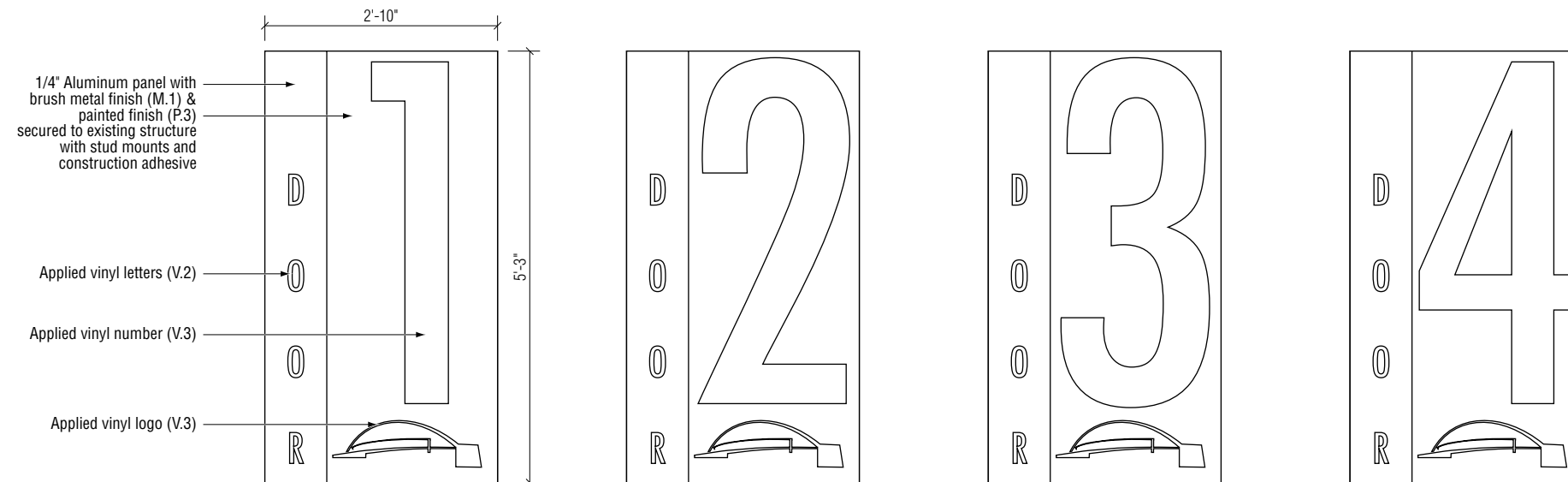
- Submittals required as per the Qualities & Submittals section of this document.
- These drawings express visual design intent only. Final engineering, materials and fabrication shall remain the responsibility of the fabricator.
- All content of this document is subject to the design intent requirements outlined elsewhere in the document. Refer to the Fabricator Performance & Material Requirements, Quantities & Submittals, Materials & Finishes and Fonts & Symbols sections this document for further details.



1 Elevation: North
 SCALE: 1/32" = 1'-0"



2 Elevation: South
 SCALE: 1/32" = 1'-0"



3 Elevation: Variations
 SCALE: 1/2" = 1'-0"

ORIGINAL ISSUE:	March 7, 2013
REVISIONS:	

Entry I.D.

Exterior Comprehensive Sign Masterplan

DENVER COLISEUM

DENVER COLISEUM

PROJECT

Arts & Venues- Denver

CLIENT

JG, DT, JW

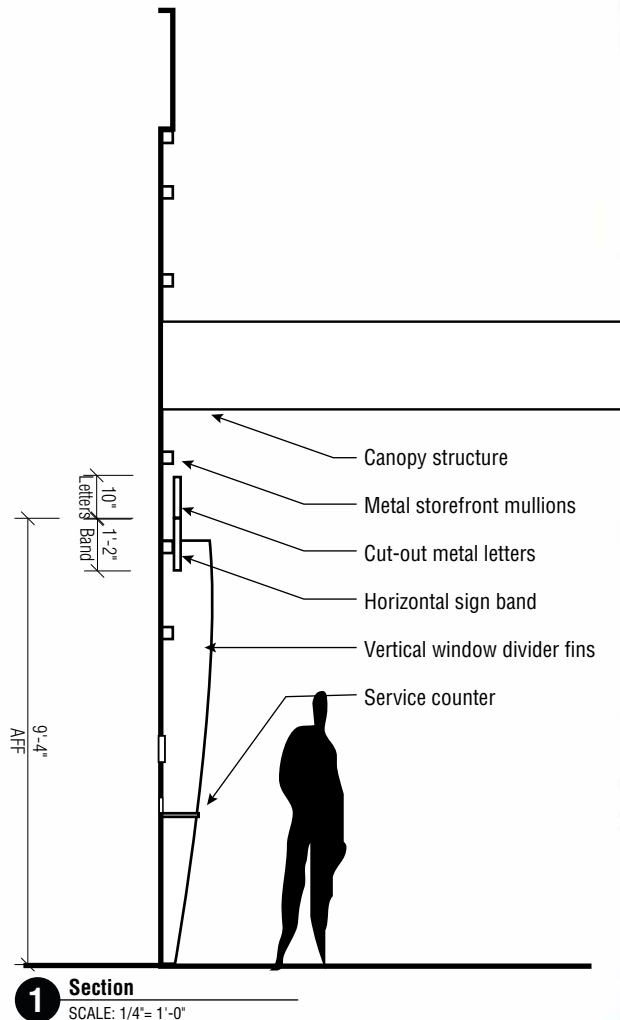
TEAM JOB NO.

GENERAL NOTES:

- Submittals required as per the Qualities & Submittals section of this document.
- These drawings express visual design intent only. Final engineering, materials and fabrication shall remain the responsibility of the fabricator.
- All content of this document is subject to the design intent requirements outlined elsewhere in the document. Refer to the Fabricator Performance & Material Requirements, Quantities & Submittals, Materials & Finishes and Fonts & Symbols sections this document for further details.

ORIGINAL ISSUE:	March 7, 2013
REVISIONS:	

Facility I.D.



1 Section
 SCALE: 1/4" = 1'-0"

2 Elevation
 SCALE: 1/4" = 1'-0"

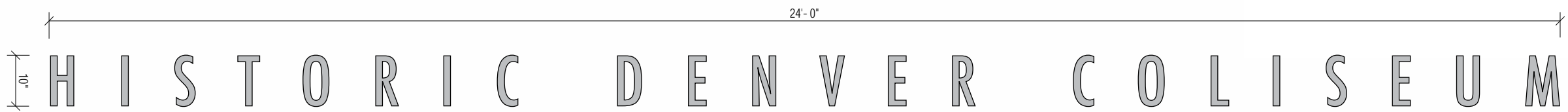
Green glass storefront curtainwall. Stainless steel tube mullion grid.

Fabricated metal sign band spans entire box office window width. Signband "pierces" vertical window divider fins.

Cut-out letters fastened to top of sign band.

Sign is not illuminated. It reads as a silhouette at night against illuminated box office interior.

10" x 24'-0" = 18 sq./ft.



3 Elevation Detail
 SCALE: 1/2" = 1'-0"

Exterior Comprehensive Sign Masterplan

DENVER COLISEUM

DENVER COLISEUM
 PROJECT

Arts & Venues- Denver
 CLIENT

JG, DT, JW
 TEAM JOB NO.

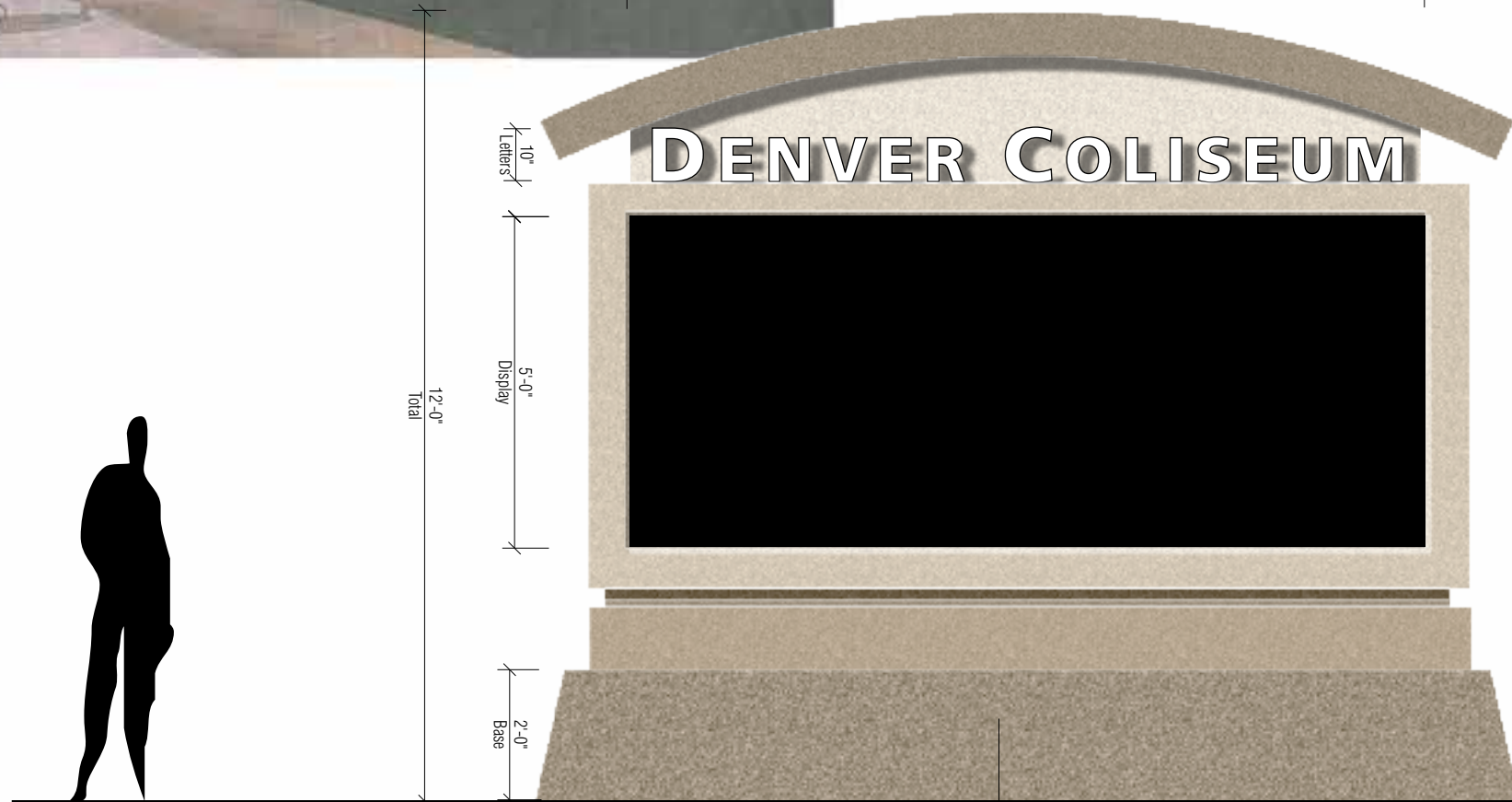
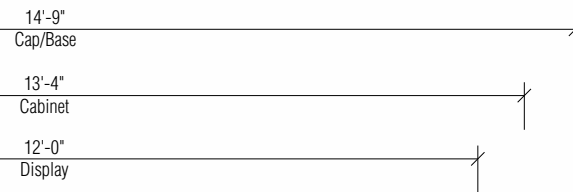
GENERAL NOTES:

- Submittals required as per the Qualities & Submittals section of this document.
- These drawings express visual design intent only. Final engineering, materials and fabrication shall remain the responsibility of the fabricator.
- All content of this document is subject to the design intent requirements outlined elsewhere in the document. Refer to the Fabricator Performance & Material Requirements, Quantities & Submittals, Materials & Finishes and Fonts & Symbols sections this document for further details.

ORIGINAL ISSUE:	March 7, 2013
REVISIONS:	



1 Photo Composite
 SCALE: NTS



2 Elevation
 SCALE: 3/8"= 1'-0"



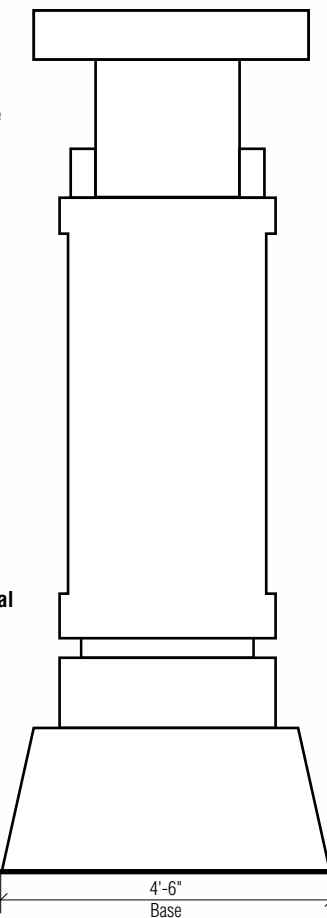
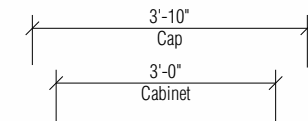
2-Sided freestanding monument with full color dynamic display, both sides.
 Frequency of Change: Sign code states: The LEDs on any such device may not flash, blink or fluctuate, or change in any manner more frequently than once per hour, must be dimmed at dusk and may not be lit between the hours of 1:00am and 6:00am.

Fabricated letterforms, LED internal illumination and acrylic faces, both sides.

Entire structure (except base) is fabricated metal cabinet construction with *heavily* textured stucco finish.

Base is precast colored concrete.

Monument: 14'-9" x 12'-0" = 177 sq./ft.
Display: 12'-0" x 5'-0" = 60 sq./ft.
177 sq./ft. total



3 Section
 SCALE: 3/8"= 1'-0"

Freestanding Monument

Exterior Comprehensive Sign Masterplan

DENVER COLISEUM

DENVER COLISEUM

PROJECT

Arts & Venues- Denver

CLIENT

JG, DT, JW

TEAM JOB NO.

GENERAL NOTES:

- Submittals required as per the Qualities & Submittals section of this document.
- These drawings express visual design intent only. Final engineering, materials and fabrication shall remain the responsibility of the fabricator.
- All content of this document is subject to the design intent requirements outlined elsewhere in the document. Refer to the Fabricator Performance & Material Requirements, Quantities & Submittals, Materials & Finishes and Fonts & Symbols sections this document for further details.

ORIGINAL ISSUE:	March 7, 2013
REVISIONS:	

Primary Changeable Banner Program



Support structure system on concrete fins under curved canopy on East elevation of building. Attachment system to include contact points on the fins and rails or cables in between as necessary. Hardware to be not visible when banners are in place.

Attachment system allows for banners to be of varying lengths, based upon the unit length of the distance between two concrete fins: 21'-9" (Field Verify). Banner height is 12'-0". Hardware to be painted P.4 (Building Beige).

Maximum banner size would span all nine bays:
195'-9" x 12'-0" = 2349 sq./ft.

