

Montclair Storm Drainage Project Phase II



Montclair Storm Drainage Project Phase II

Summary

- 1,206 Linear Feet of 14' x 7' Box Pipe
- Designed for the 5-year storm, which is 1,027 cfs
- 4 Curb Ramp Improvements at 16th & Jackson Street
- 12 New Inlets

Location



Slide 3

k1

klososa, 7/30/2010

Street View of Neighborhood



Jackson St

Slide 4

k3

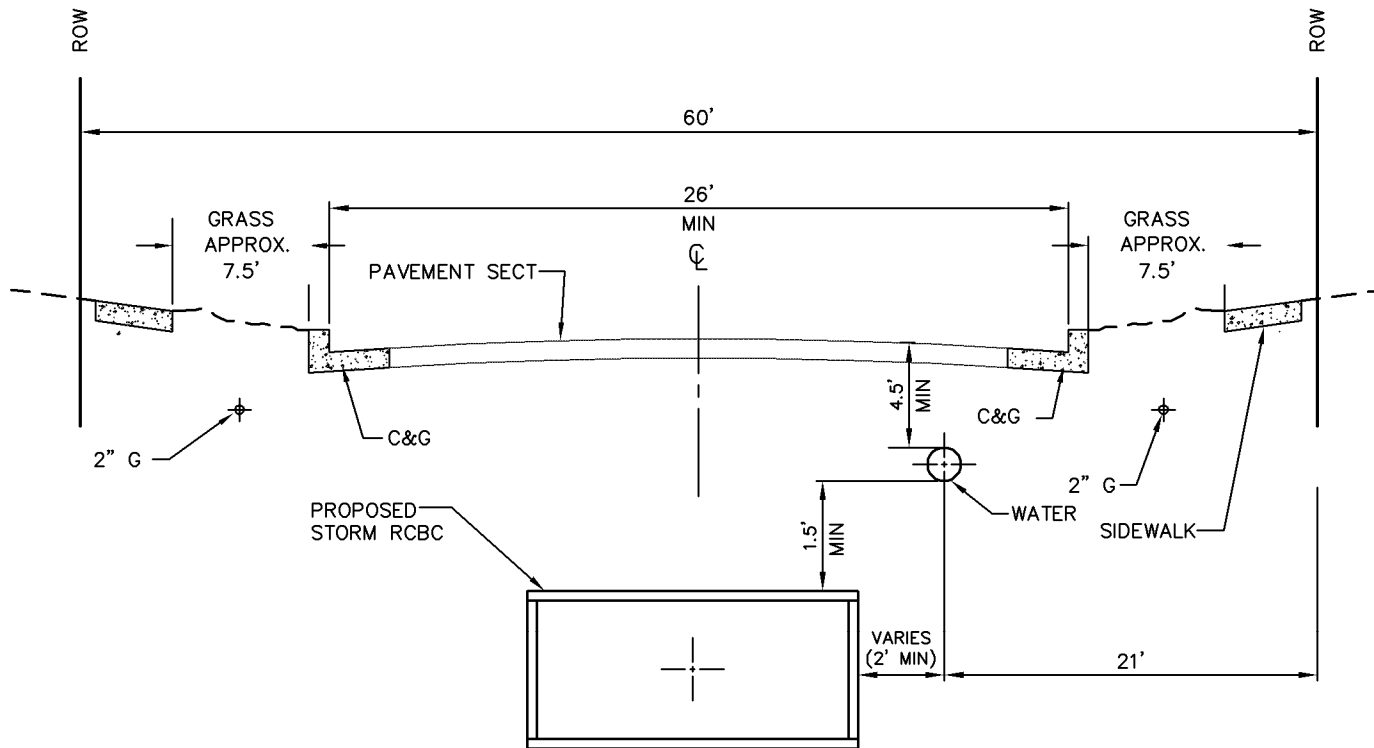
klososa, 7/30/2010

Montclair Storm Drainage Project Phase II

Challenges

- **8" Water line relocation**
 - A. Lead Services
 - B. Above Ground Temporary Water Service
- **Gas Line Relocation (to two lines on both sides of the street)**
- **Size of Box Pipe with a 23' trench in 26-foot wide road**

Typical Cross Section



JACKSON STREET CROSS SECTION

Slide 6

k4

klososa, 7/30/2010





11.03.2007 09:19