



2018-19 WORKFORCE CONTRACTS

Business, Arts, Education and Aeronautical Services Committee

Tony Anderson, OED Denver Workforce Services

June 13, 2018

CONTRACTS

★ **18-0630** \$3,505,000 to ResCare Workforce Services (Arbor E&T) to provide services to adults, including WIOA enrollees

★ **18-0629** \$1,560,000 to Denver Public Schools to provide services to WIOA In-School and Out-of-School Youth

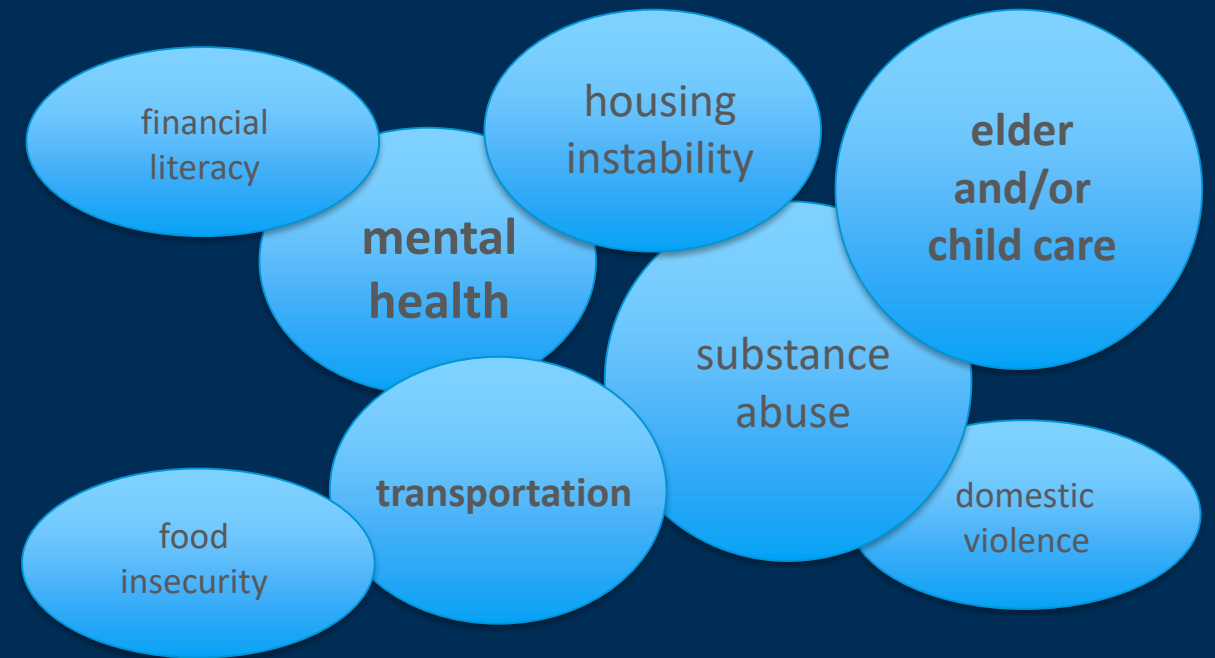
\$700,000 to ResCare Workforce Services (Arbor E&T) to provide services to TANF recipients

Additional \$100,000 to Denver Public Schools for 2018 Summer Youth Employment Program (Total \$600,000)

WHO WE SERVE

THE PRIORITY POPULATIONS

- Recipients of public assistance
- Low income individuals and families
- Basic skills deficient
- Individuals with disabilities
- Ex-offenders
- Long-term unemployed

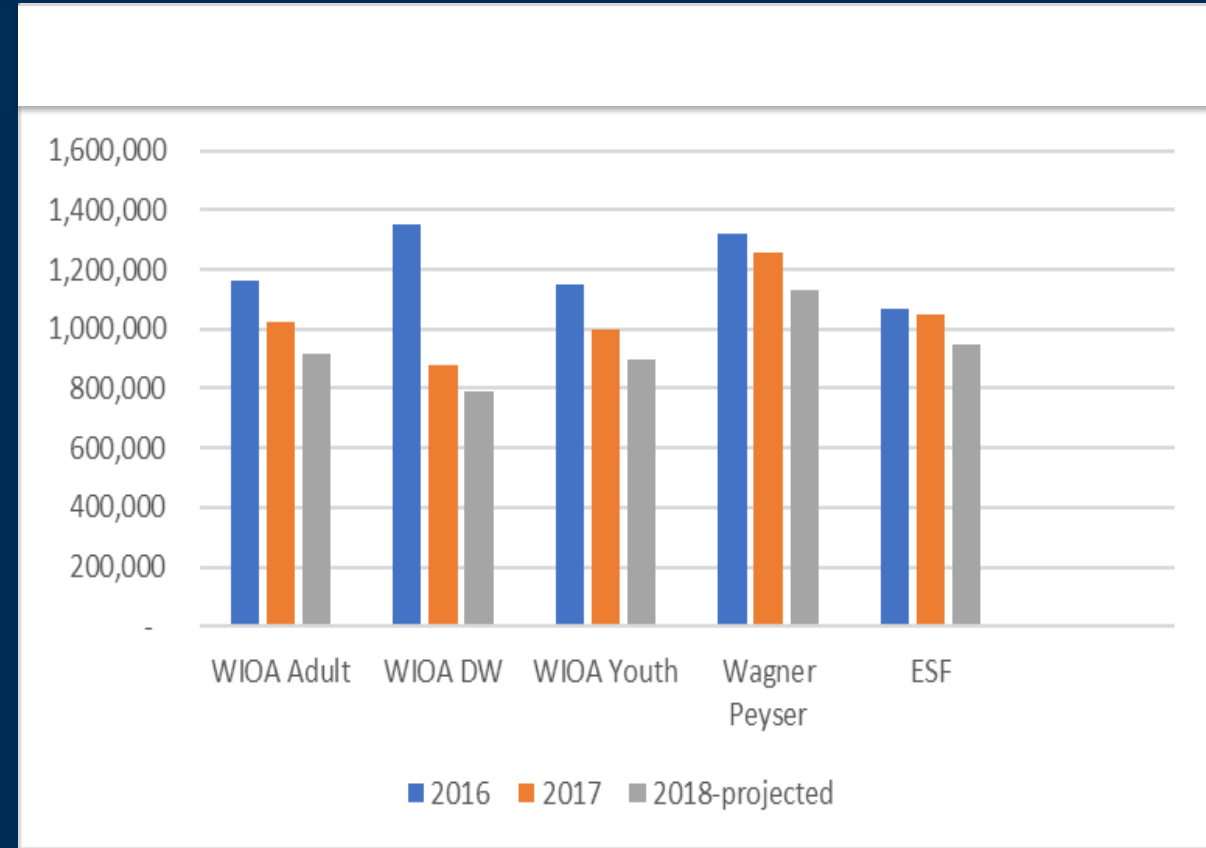


BY THE NUMBERS (PY16-17 and 17-18)

- 80% of program-enrolled job seekers
 - 898 individuals reporting receipt of SNAP and/or TANF and/or experiencing homelessness
 - 216 individuals experiencing homelessness
- 161 individuals reporting receipt of both SNAP and TANF

TREND IN FEDERAL FUNDS

	2016	2017	2018 (projected)
WIOA Adult	\$1,164,923	\$1,021,261	\$919,135
WIOA Displaced	\$1,350,215	\$881,059	\$792,953
WIOA Youth	\$1,151,666	\$996,697	\$897,027
Wagner-Peyser	\$1,322,121	\$1,256,389	\$1,130,750
Employment Support Fund	\$1,065,917	\$1,050,036	\$945,032



DENVER WORKFORCE SERVICES – TOTAL METRICS

Total jobseekers served

PY17 - 22,717

PY16 - 27,647

Staff assisted services

PY17 - 6,449 jobseekers
(32,980 services)

PY16 - 8,944 jobseekers
(35,433 services)

Total program-enrolled jobseekers

PY17 - 1,917

PY16 - 2,012

Entered employment rate

PY17 - 61.20%

PY16 - 59.33%

Employment retention

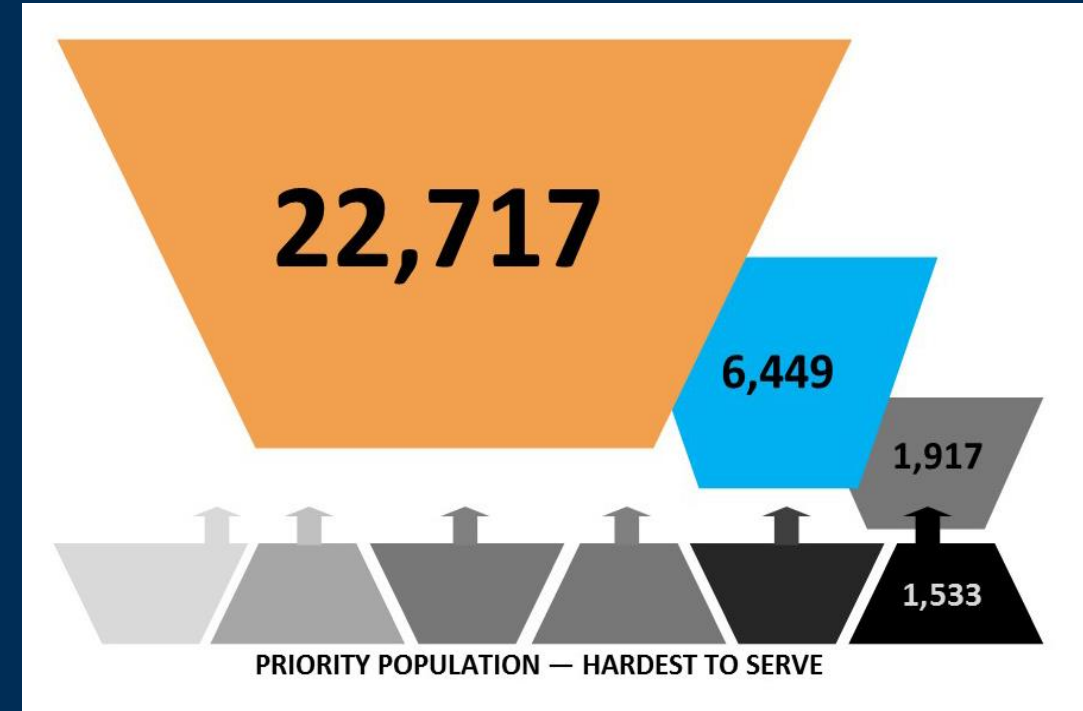
PY17 - 79.14%

PY16 - 78.09%

Average wage

PY17 - \$17.69/hour

PY16 - \$15.54/hour



PY17 numbers include data through 5/31/18

METRICS: WIOA Adult Program

Total Enrollments

PY17 - 528

PY16 - 721

Received training

PY17 - 260

PY16 - 230

Employment in 2Q after exit

PY17 - 68% (Goal is 75%*)

PY16 - 74% (70%)

Employment in 4Q after exit

PY17 - 67% (70%)

PY16 - 68% (65%)

Median Quarterly Earnings

PY17 - \$4,221 (\$7,388)

PY16 - \$6,176 (\$7,000)

Credential Rate

PY17 - 60% (52%)

PY16 - 47% (40%)

Federal guidelines set an aspirational goal, with our performance expected to reach 80% of goal

METRICS: WIOA Dislocated Worker Program

Total Enrollments

PY17 - 216

PY16 - 263

Received training

PY17 - 51

PY16 - 64

Employment in 2nd Qtr After Exit

PY17 - 75% (76%)

PY16 - 74% (75%)

Employment in 4th Qtr After Exit

PY17 - 74% (72%)

PY16 - 73% (68%)

Median Earnings

PY17 - \$8,209 (\$8,440)

PY16 - \$7,495 (\$8,000)

Credential Rate

PY17 - 63% (50%)

PY16 - 35% (40%)

METRICS: WIOA-Enrolled Youth

Total enrollments

PY17 - 409

PY16 - 606

Employment in 2Q after exit

PY17 - 67% (65%)

PY16 - 66% (65%)

Received training

PY17 - 142

PY16 - 137

Employment in 4Q after exit

PY17 - 67% (57%)

PY16 - 65% (56%)

Credential Rate

PY17 - 38% (57%)

PY16 - 43% (40%)

METRICS – TANF PY17

Total Referrals - 300

Percentage entering employment or training - 48%

Received Training - 37

Entered Employment - 106

PY18 contract will continue to focus on employment placement of work-ready customers, with a focus on strengths-based, technical skills, and career assessments

CONTINUUM OF JOBSEEKER SERVICES



Access, Collaboration, Referrals, Best Practices

Denver Workforce Integration Network

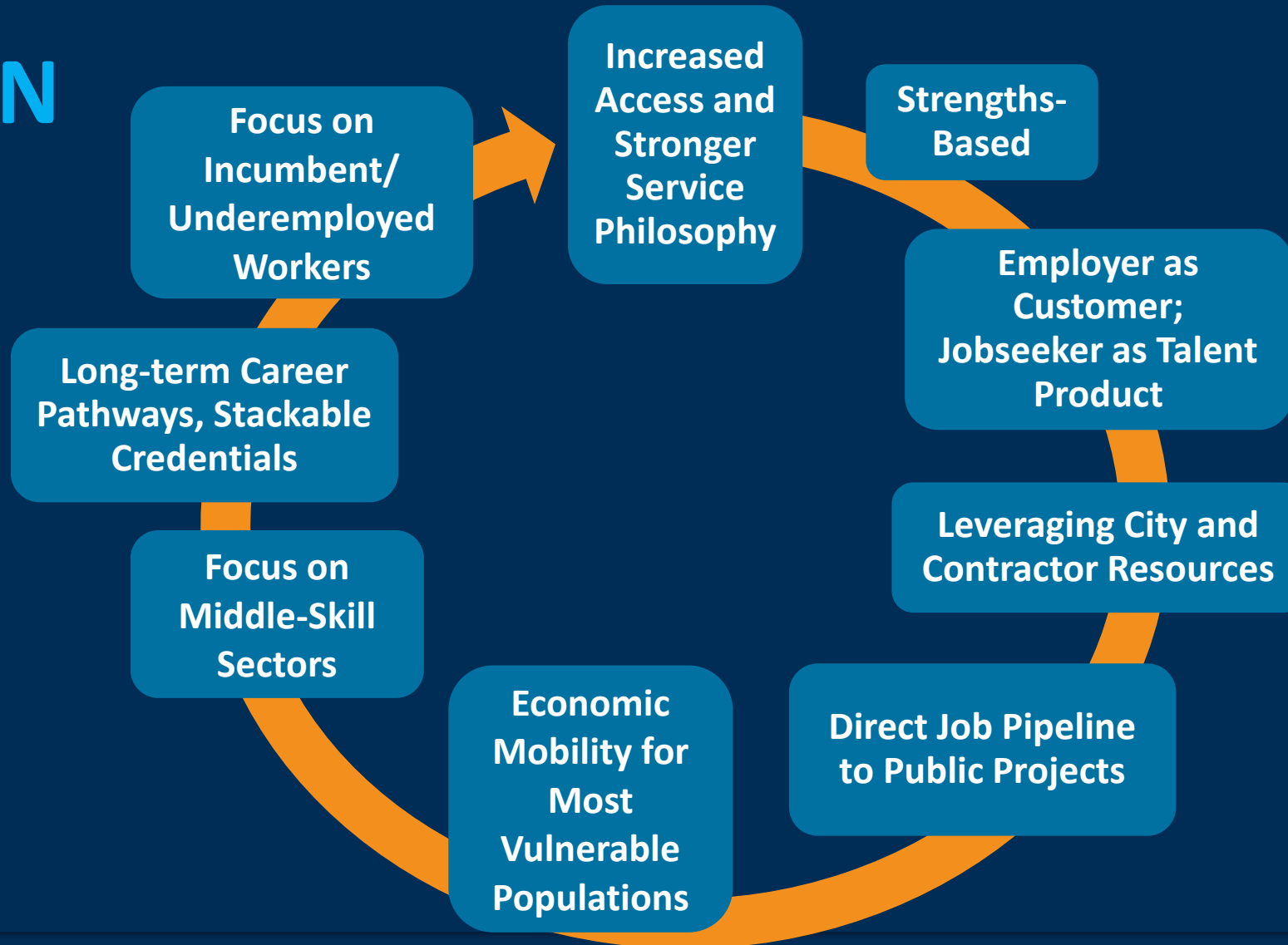
Convener: ResCare

Partners:

Asian Pacific Development Center
Community College of Denver
Division of Vocational Rehabilitation
Denver Human Services
Denver Housing Authority
Denver Indian Center

Emily Griffith Technical College
Focus Points Family Resource Center
OED/Denver Workforce
Senior Community Service Employment Program
CO Veterans Services
Youth Build

VISION



We are entering our third year of outsourced contractors

OTHER KEY INITIATIVES, OTHER FUNDING STREAMS

- **WORKNOW**
- **Technology Employment in Colorado Partnership (TEC-P)**
- **Re-Imagine Retail (Walmart Foundation Grant)**
- **Disability Employment Initiative**
- **Early Childhood Workforce Innovation Grant**



ON THE HORIZON . . .

- **Construction Initiative**
Increased access to city projects for Denver residents
- **Economic Mobility Resource Center Model - GES**
Expanded physical access to Denver Workforce Services staff
- **Workforce Development Board**
Focused on youth, work-based learning, funding and sustainability
- **Enhanced Sector Partnerships**
Informed, pro-active, employer-driven workforce system

QUESTIONS / DISCUSSION

