

# Denver Parks & Recreation

Proposed Park Designations

14<sup>th</sup> Round – Spring 2023

Land Use, Transportation & Infrastructure Committee (LUTI) –

May 23, 2023

# Park System History

- Park System had its origin in 1858 with the cities of Auraria, Denver City and Highland at the confluence of the South Platte River and Cherry Creek
- First park was Curtis Park in 1868
- First Park Board was created in 1893
- The Park Board directed the management and development of the park system until about 1904
- Under Mayor Speer, a charter amendment in 1904 was adopted that created the Department of “Improvements and Parks”
- In 1910 the Mountain Park System was established
- In 1956 the Department of Parks and Recreation was created.
- Parcels that were acquired, developed or treated as a park at this time (1956) became designated under this charter amendment
- Subsequent park designations are accomplished through the City Council ordinance process

# Designation Considerations

- Supports a master plan (City Park)
- Has historical, cultural, ecological, or educational significance (Civic Center, Cheesman)
- Preservation of key visual corridors or scenic vistas (Cranmer)
- Park facilities have been or are planned to be constructed
- Area infrastructure / utilities are not in a state of flux that may impact or change the park (Hampden Heights Park)
- There are no title / ownership issues that cast a cloud on the City's title or right to possession of the park (Kennedy Complex, DEN Open Space)
- No pending or anticipated plans for making/expanding non-park uses within the park.

# Park Designation Status

- Beginning of 2013  
Approximately 68% of the urban park system was already designated a parkland
- 1<sup>st</sup> Round - April 2013  
Approximately 180 acres became designated (72% of urban parks are designated)
- 2<sup>nd</sup> Round – January 2014  
Approximately 275 acres became designated (78% of urban parks are designated)
- 3<sup>rd</sup> Round – April 2014  
Approximately 164 acres became designated (82% of urban parks are designated)
- 4<sup>th</sup> and 5<sup>th</sup> Rounds – November 2014  
Approximately 42 acres became designated (84% of urban parks are designated)

# Park Designation Status

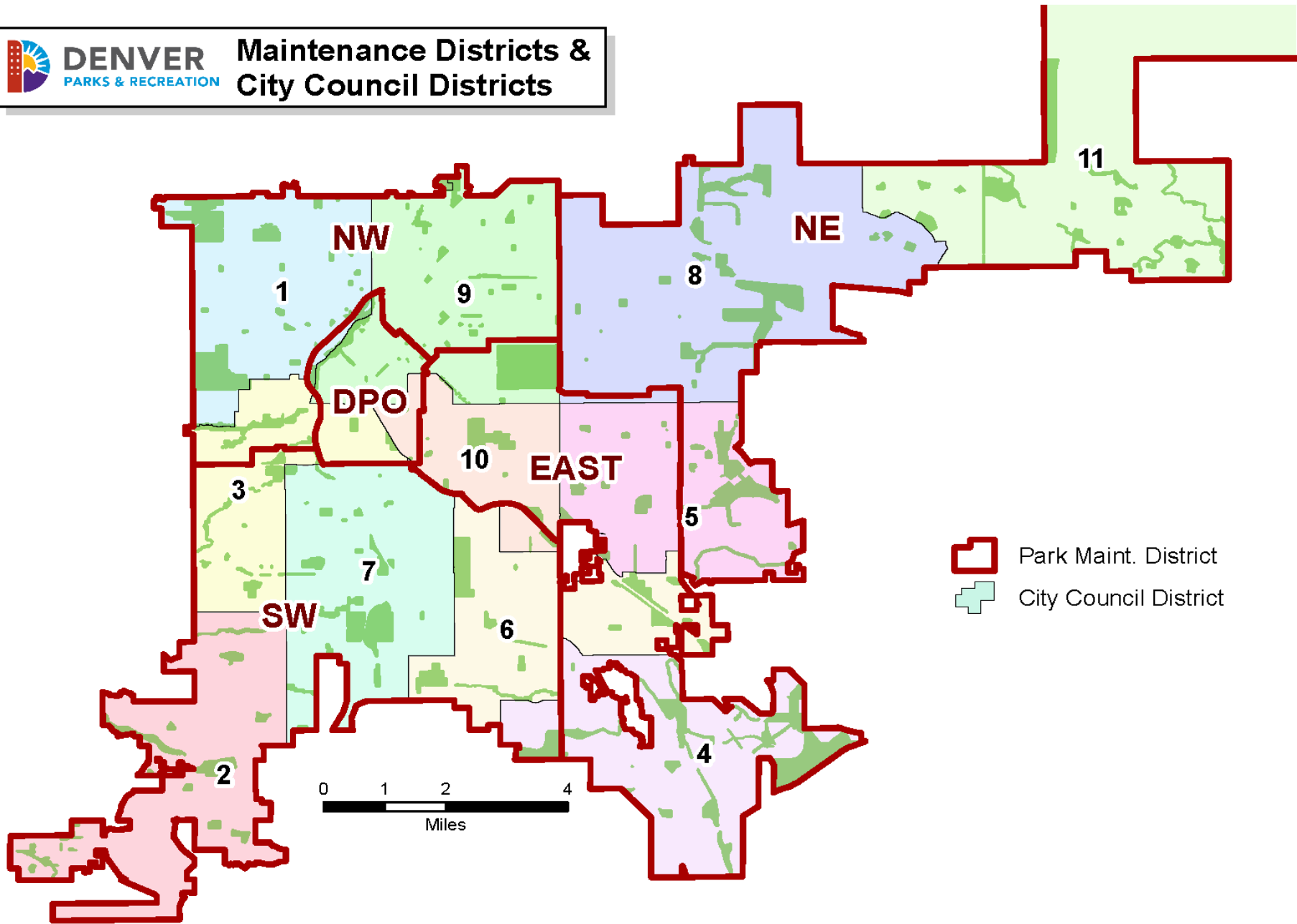
- 6<sup>th</sup> Round – Fall 2015  
Approximately 88 acres became designated (85% of urban parks are designated)
- 7<sup>th</sup> Round – Spring 2016  
Approximately 5.9 acres became designated (78% of urban parks are designated)
- Red Rocks Park Addition – Summer 2016  
Approximately 98 acres added to Red Rocks became designated
- 8<sup>th</sup> Round – Fall 2016  
Approximately 180 acres became designated (81% of urban parks are designated)
- 9<sup>th</sup> Round – Spring 2017  
Approximately 65 acres became designated (82% of urban parks are designated)

# Park Designation Status

- 10<sup>th</sup> Round – Fall 2017  
Approximately 3.6 acres became designated (82% of urban parks are designated)
- 11<sup>th</sup> Round – Winter 2018  
Approximately 75 acres became designated (84% of urban parks are designated)
- 12<sup>th</sup> Round – Fall 2020  
Approximately 99 acres became designated (82% of urban parks are designated)
- 13<sup>th</sup> Round – Spring 2022  
Approximately 36 acres became designated parkland (81% of urban parks are designated)
- 14<sup>th</sup> Round – Spring 2023  
Approximately 121.8 acres will become designated (76% of urban parks designated)



# DENVER Maintenance Districts & City Council Districts



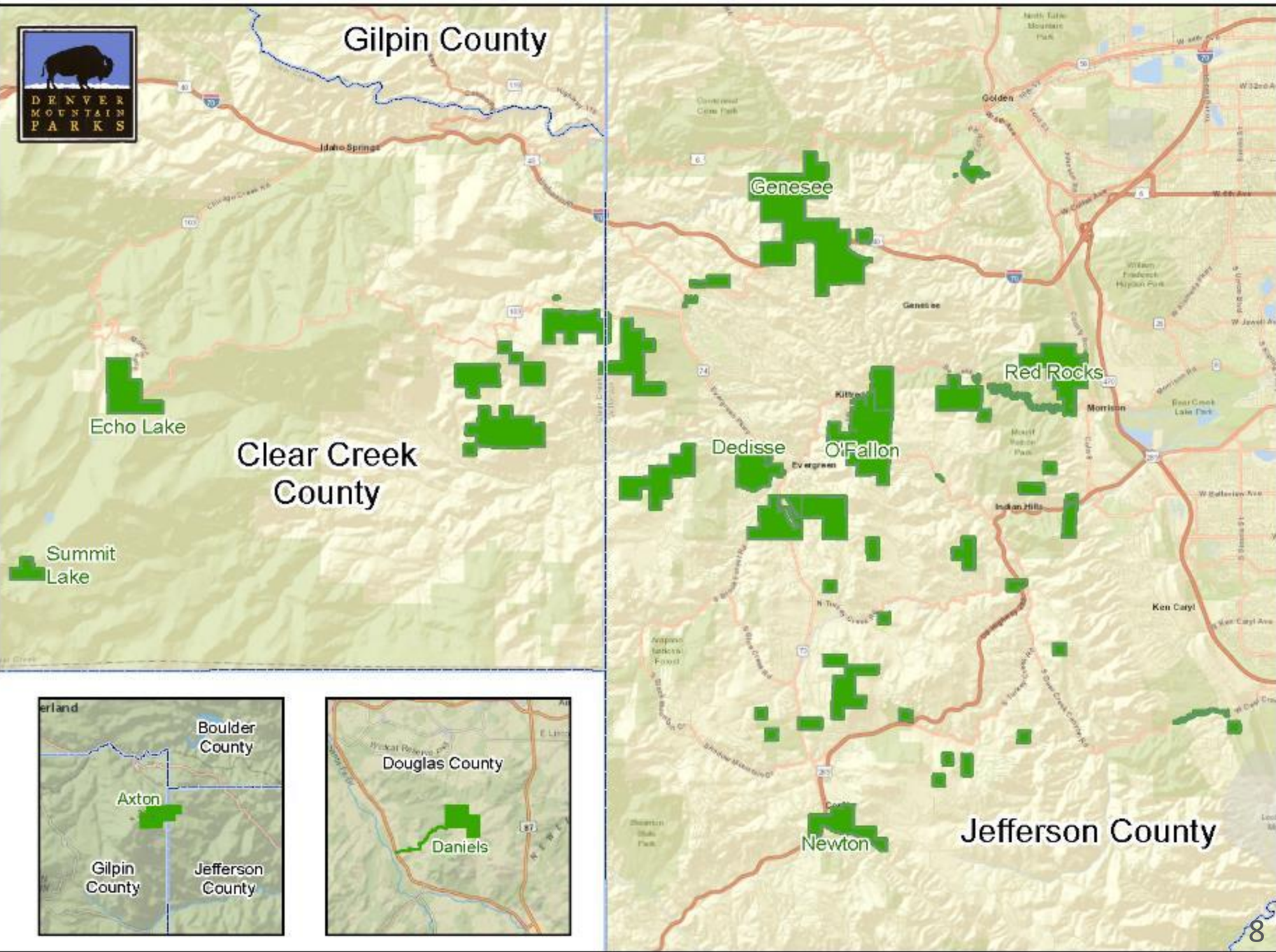




Gilpin County

Clear Creek  
County

Jefferson County



Echo Lake

Summit  
Lake

Genesee

Red Rocks

Dedisse

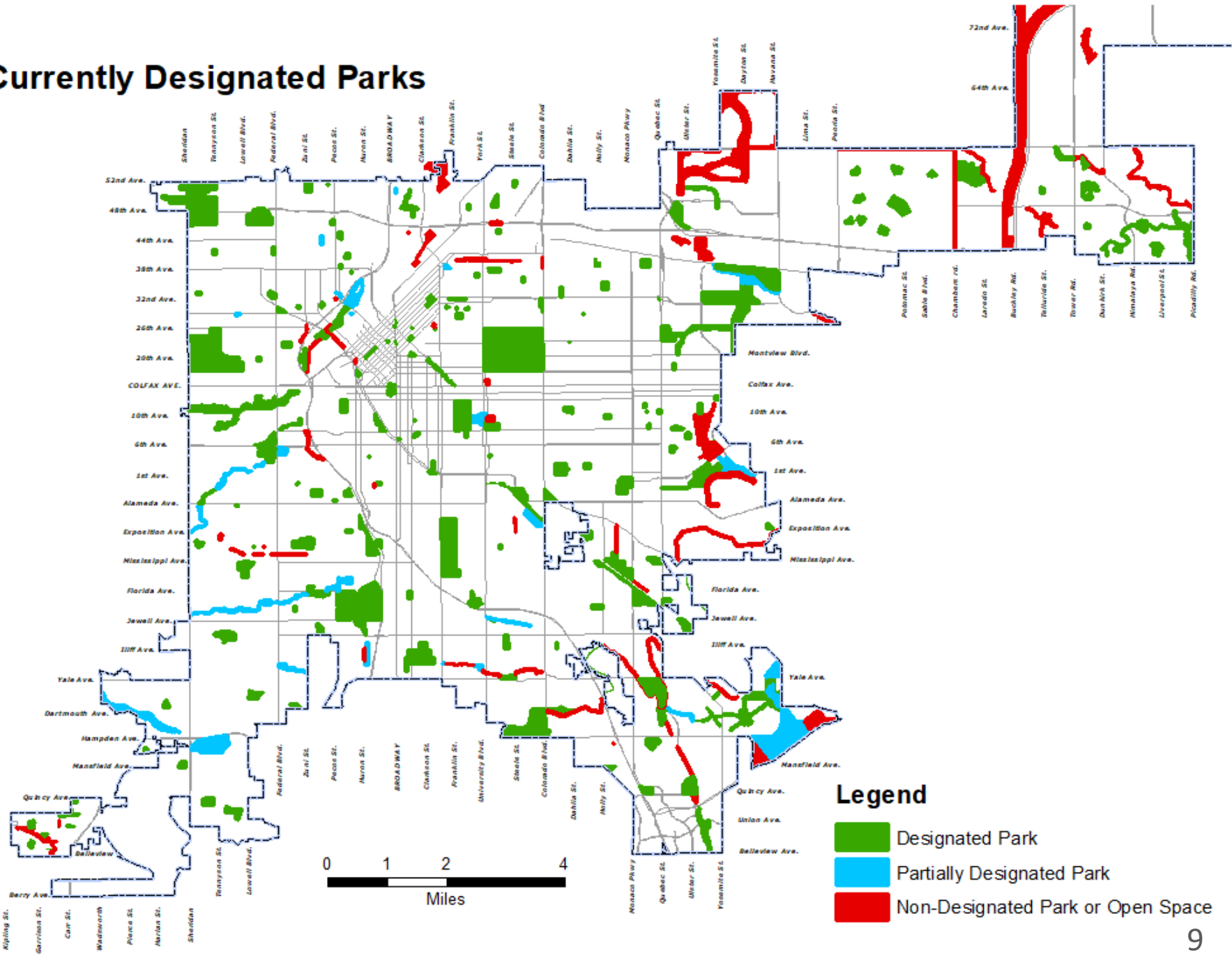
O'Fallon

Newton





# Currently Designated Parks



# Park Designations

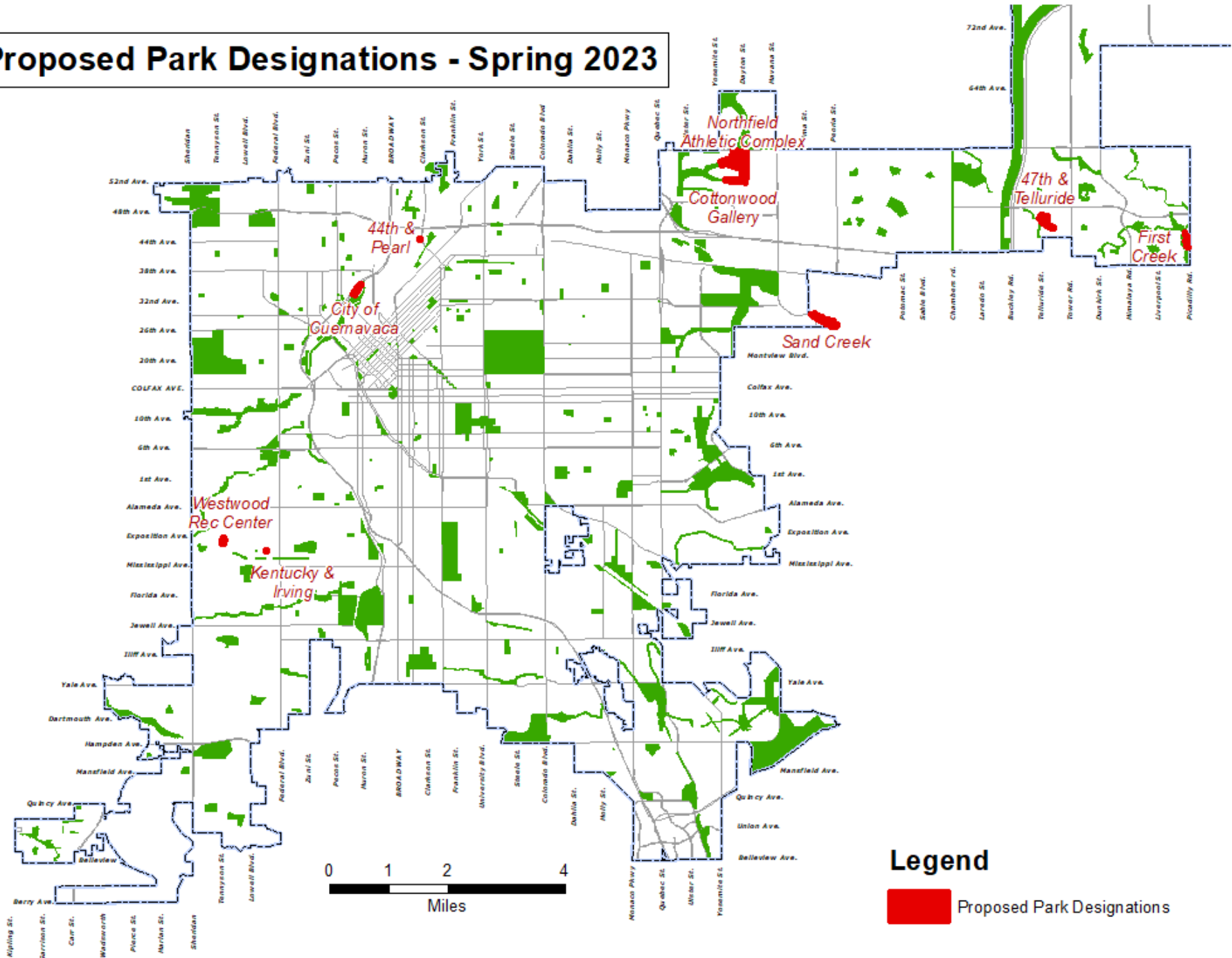
## Proposed Designations - Round 14 - Spring 2023

LOCATION NAME	PARK TYPE	GIS ACRES	MAINT DIST	COUNCIL DIST
City of Cuernavaca Park (Portion)	Community	4.6	DPO	1
Kentucky & Irving	Undeveloped	0.3	SW	3
Westwood Recreation Center	Rec Center	2.8	SW	3
Cottonwood Gallery (Addition)	Undeveloped	7.0	NE	8
Northfield Athletic Complex	Athletic Complex	69.1	NE	8
Sand Creek Open Space (8A)	Open Space	20.9	NE	8
47th & Telluride	Undeveloped	13.2	NE	11
First Creek Open Space (Addition)	Open Space	3.4	NE	11
44th & Pearl	Undeveloped	0.5	NW	9

<b>Total Acres:</b>	<b>121.8</b>
---------------------	--------------

- Designation of parkland from 1956 to 2012 – 56 year time span: approximately 600 acres
- Designation of parkland from 2013 to 2023 – 10 year time span: approximately 1,433.3 acres, more than twice as much as the prior 56 years
- Park and Open Space acreage added to the Denver Parks system from 2013 to 2023: approximately 1,907 acres
- Designated parkland cannot be sold or disposed of without approval of voters

# Proposed Park Designations - Spring 2023







**City of Cuernavaca Park**

Aerial Imagery - 2022

1 inch = 150 feet at 11x17

100  
Map Scale In Feet







**Unnamed Kentucky & Irving Park**

Aerial Imagery - 2022

1 inch = 50 feet at 11x17  
100  
Map Scale in Feet







**Sand Creek Truck Open Space**

Aerial Imagery - 2022







**Cottonwood Gallery (Addition)**

Aerial Imagery - 2022

1 inch = 150 feet at 11x17  
 100  
 Map Scale In Feet







**Northfield Athletic Complex**  
 Aerial Imagery - 2022

1 inch = 300 feet at 11x17  
 100  
 Map Scale In Feet







**Sand Creek Trunk Open Space**

Aerial Imagery - 2022

1 inch = 200 feet at 11x17  
 100  
 Map Scale In Feet







**Unnamed 47th & Telluride Park**

Aerial Imagery - 2022

1 inch = 150 feet at 11x17

100  
Map Scale In Feet







**First Creek Open Space (Addition)**

Aerial Imagery - 2022

1 inch = 150 feet at 11x17

100  
Map Scale In Feet







**Unnamed 44th & Pearl Park**

Aerial Imagery - 2022

1 inch = 50 feet at 11x17

100

Map Scale In Feet



# Request for Approval of Park Designations

- CB 23-0629 – City of Cuernavaca Park (portion), Council District 1 - 4.8 acres
- CB 23-0630 – Cottonwood Gallery (addition), Council District 8 – 7.0 acres
- CB 23-0631 – First Creek Open Space (addition), Council District 11 – 3.4 acres
- CB 23-0632 – Northfield Athletic Complex, Council District 8 – 69.1 acres
- CB 22-0633 – Sand Creek Open Space, Council District 9 – 20.9 acres
- CB 22-0634 – W. Kentucky & S. Irving Park, Council District 3 – 0.30 acres
- CB 22-0635 – 44<sup>th</sup> & Pearl Park, Council District 9 – 0.5 acres
- CB 22-0636 – 47<sup>th</sup> & Telluride Park, Council District 11 – 13.2 acres
- CB 22-0637 – Westwood Recreation Center - Council District 3 – 2.8 acres



# Questions / Comments

