



PEÑA BOULEVARD E470 TO JACKSON GAP DESIGN CONTRACT, NEPA AND DESIGN UPDATE, & GO TO DEN (TRANSPORTATION DEMAND MANAGEMENT (TDM) PROGRAM)

December 17, 2025

PHIL WASHINGTON, CHIEF EXECUTIVE OFFICER
DENVER INTERNATIONAL AIRPORT

DANIELLE YEARSLEY, PRINCIPAL PROJECT MANAGER
DENVER INTERNATIONAL AIRPORT

LISA NGUYEN, PRINCIPAL AIRPORT PLANNER
DENVER INTERNATIONAL AIRPORT



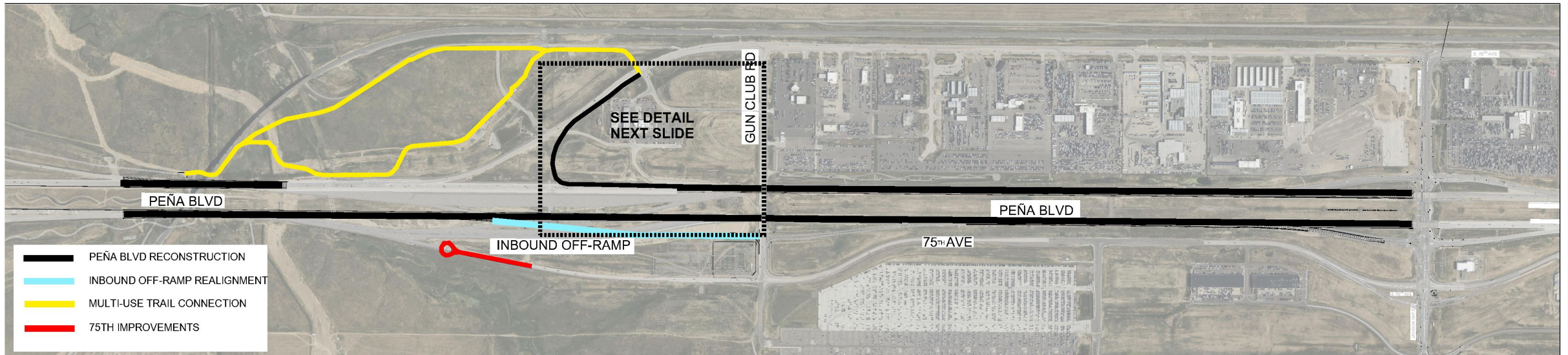
Approval of contract with Hg Consult, Inc. contract number PLANE-202577849

- Amount: \$8,796,000
- Term: 5 Years from effective date
- Purpose: Professional Design Services for Peña Boulevard from E470 to Jackson Gap. The Peña Boulevard, E-470 to Jackson Gap Street Project is being undertaken for the reconstruction of roadway pavements to replace infrastructure that has reached its life expectancy and required significant maintenance efforts in recent years. This reconstruction will accommodate DEN's planned growth for access to DEN's Jeppesen Terminal, reduce accidents, and keep pace with DEN passenger and development growth.

PEÑA BOULEVARD RECONSTRUCTION: E-470 TO JACKSON GAP STREET

Major Improvement Elements:

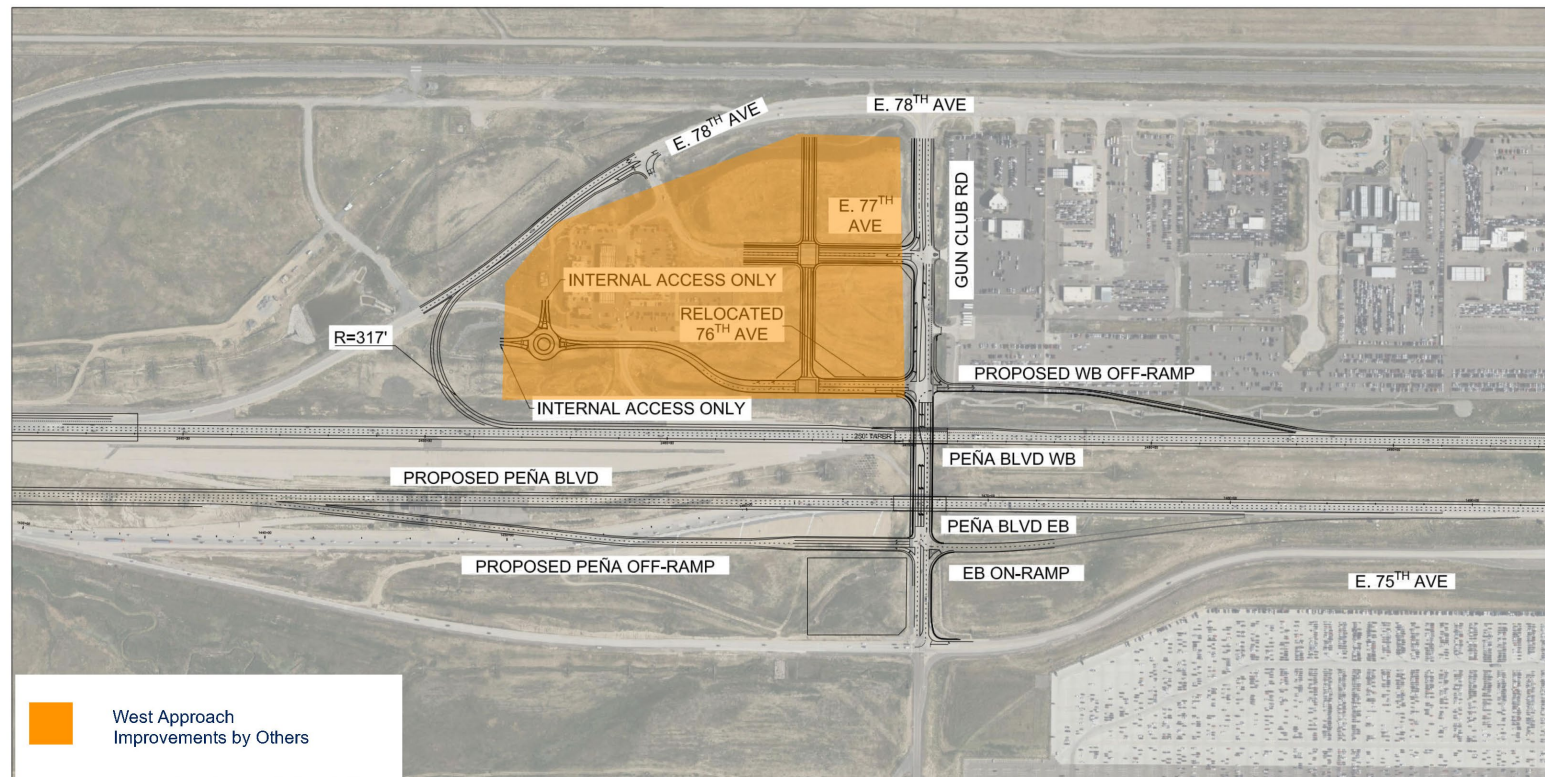
- Reconstruction of Peña Boulevard from E-470 to Jackson Gap Street.
 - Maintains same number of travel lanes (three in each direction).
- Straightening In-Bound Peña Boulevard from RTD A-Line Bridge to Gun Club Road.
- Realignment of Peña Boulevard off-ramps to Gun Club Road.
- Proposed multi-use trail connection.



PEÑA BOULEVARD RECONSTRUCTION: E-470 TO JACKSON GAP STREET

Major Improvement Elements:

- New Peña Boulevard out-bound off-ramp to Gun Club Road.
- DEN Final Approach Ramp improvements.



Hg Consult, Inc. has been selected to perform Design Engineering Services for improvements to Peña Boulevard between E-470 and Jackson Gap Street including:

- Roadway Design
- Drainage/Water Quality design
- Bridge/Structures design
- Traffic engineering
- Lighting
- Utilities
- ITS/ communications
- Survey
- Geotechnical and Materials engineering

As part of Vision 100, the project will “Maintain Existing Infrastructure” for the following benefits:

- New concrete pavement reduces maintenance.
- Improved ramp geometry improves safety.
- Multi-use trail supports DEN Transportation Demand Management Plan strategies.
- Removal of 8.0 acres of existing pavement area (former toll plaza) reduces impervious area.
- Peña Boulevard inbound “straightening” and realigned off-ramp to Gun Club Road supports DEN Real Estate development.
- West approach ramp improvements supports DEN Real Estate development.

CONTRACT OUTREACH / CONTRACT SELECTION PROCESS



- Procurement opportunity was published on the DEN Commerce Hub website, specifically under its “Future Opportunities” webpage.
- Through DEN’s Commerce Hub, DEN Design, Engineering and Construction completed two (2) business community outreach events in November 2024 and December 2024.
- DEN received seven (7) proposals on May 28, 2025, from AECOM, Alfred Benesch & Company, Hg Consult, Kimley Horn and Associates, Muller Engineering, RockSol Consulting Group, and Shrewsberry & Associates.
- DEN Business Management Services and the Division of Small Business Opportunity reviewed and approved all seven (7) proposals for responsiveness.
- DEN shortlisted two (2) teams for interviews, Hg Consult and AECOM. Interviews were held on September 2, 2025.
- Hg Consult scored highest overall and was notified on October 10, 2025.

CONTRACT MWBE/ACDBE/DBE GOALS



- Division of Small Business Opportunity established a 12% Minority and Women-owned Business Enterprise Goal.
- Hg Consult, Inc. is committed to achieving a 55% Minority and Women-owned Business Enterprise Participation.



Hg Consult, Inc. overview:

- Certified Minority/Women Business Enterprise (M/WBE) and Small Business Enterprise (SBE) consultant.
- Full-service transportation and environmental planning and design firm.
- Prior Denver International Airport (DEN), Department of Transportation and Infrastructure (DOTI), and Colorado Department of Transportation (CDOT) experience.
- Delivered multiple complex roadway and bridge design projects similar to Peña Boulevard.
- Roadway, bridge, traffic, and drainage design experience to successfully deliver this project.

Benefits:

- Maintain existing number of travel lanes throughout construction will minimize impacts to public traffic.
- Replacement of the aging pavement results in fewer emergency panel replacements that impacts travelers to/from the airport.
- Straightening of In-Bound Peña Boulevard and the realignment of the off-ramp to Gun Club Road improves traffic weave and safety.
- Proposed multi-use trail facilitates pedestrian/bike connections into the airport.

- DEN seeks approval for this contract with Hg Consult, Inc.
 - Amount: \$8,796,000
 - Term: Five years
- This critical contract will deliver improvements to the aging infrastructure along Peña Boulevard.



PEÑA NEPA & DESIGN UPDATE



WHAT IS NEPA (NATIONAL ENVIRONMENTAL POLICY ACT)



- A federal law that requires agencies to evaluate the environmental effects of their actions and invite public input before making major decisions.
- NEPA is required because the project involves federal funding and strong public interest—to ensure transparency and maintain eligibility for future federal support.

NEPA: KEY STEPS FOR THE PROJECT

On-Going Public Engagement Throughout the Peña NEPA & Design Project



Key Outcomes:

- Develop and validate a stakeholder-informed Purpose and Need
- Build on outcomes of Peña Master Plan
- Begin to develop a reasonable range of alternatives

Key Activities:

- Coordination with agencies to build relationships and establish shared understanding of roles and responsibilities
- User-based outreach (e.g., interviews, public events)
- Validate assumptions and confirm technical understanding
- Traffic and safety assessments
- Concept level alternatives development
- Environmental and Ground Surveys

HOW THE PUBLIC CAN STAY IN TOUCH



- Take the survey
- Visit our website:
<https://www.flydenver.com/pena-design-nepa/>
- Email us at Pena.Plan@flydenver.com
- Attend public open house in January 2025



Help Shape the Project – Sign-up for Project Updates

Your input will help identify the key issues and shape the alternatives we evaluate. Take our survey (see button below)!

Don't miss out on project updates and information about community events and engagement opportunities! Use the button below to sign up for project updates.

Take Our Public Survey 

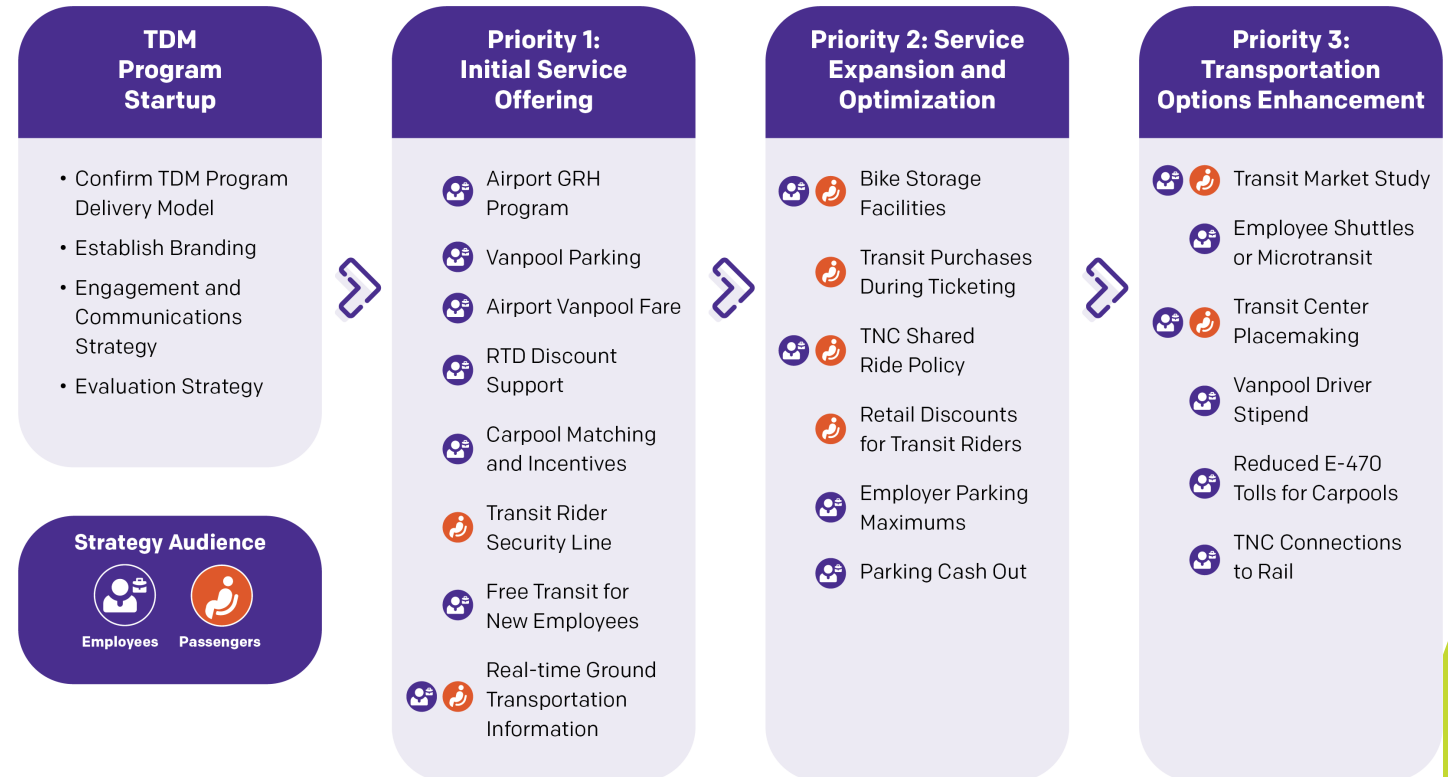
Sign up for Project Updates 





DEN Transportation Demand Management (TDM) Program

Go To DEN: Transportation Demand Management (TDM)



2035 DEN Sustainable Travel Goals

- Increase Passenger Transit by 10%
- Decrease Employee Drive-Alone by 10%

Scan to see
DEN TDM Plan



TDM Implementation Thus Far



Public Transportation - Level 1

RTD

Train to City (37 minute ride)

A	Union Station	13', 25'
---	---------------	----------

Buses from DEN

AB1	Boulder	5', 65'
104L	Wagon Road	5', 65'
AT	Arapahoe Station	9', 13'
AB2	Boulder Junction	36'

\$10 Fare for RTD Train and Bus

CDOT Bustrang

Outrider Sterling - Denver

9:36 am


Ground Transportation - Level 5

Island

Taxi	1
Mountain Shuttles*	1
Limo	2
Hotel Shuttles	3
Off Airport Parking Shuttles	3
Rental Car Shuttles	4
Rideshare	5

*Reservation Required

Scan For More Ground Transportation Information



Traffic Information

08:16 am

Thursday, September 4

DEN

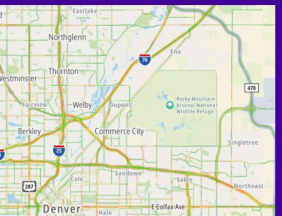
Now: 59° Clear

Hum: 64° Clear

Wind: 60° Clear

Traffic travel times

via	drive time to	now
I-225	Denver Tech Center	46
I-70	Downtown Denver	44
US 36	Boulder	62
I-70	Vail	135





Employee Commute Pilot Program

- **Vanpools** - shared vehicles (4–15 passengers) for employees with similar commutes.
- **Carpooling** connects DEN employees with similar commutes to share rides using the **Way to Go** ride-matching platform.
- **Guaranteed Ride Home Program** provides a **free ride home** (via taxi, Uber, or Lyft) for employees who **don't drive alone** to work — in case of emergencies, illness, or unexpected overtime.



MINIVAN



LARGE SUV



PASSENGER VAN



Benefits

Vanpool Benefits:

1. Go To DEN will **100% fund employee vanpools** for first year
 - Including **vehicle rental, tolls, maintenance, and gas**
2. Evaluating options for **dedicated, premium parking spots** in employee lots



Carpool Benefits:

1. Go To DEN will provide **incentives** to employee carpools
2. Evaluating options for **dedicated, premium parking spots** in employee lots



Guaranteed Ride Home Benefits:

1. Go To DEN will fund **Guaranteed Ride Home** for first year at tenant partners
2. Provides transportation insurance for employees taking public transit or carpooling; **Free emergency ride home**

DEN Transit Market Study

Goals

- Identify transit service gaps and underserved communities
- Understand current and future transit demand
- Explore new and enhanced transit options (routes, shuttles, partnerships)
- Prioritize equitable access for disadvantaged employees
- Develop actionable recommendations and implementation strategies



Go>SFO: Commuter bus for all SFO workers

- Need for better transportation to employees (distance, time)
- Challenges: Housing affordability; Employees experiencing homelessness
- Gaps: BART (Bay Area Rapid Transit) service to East Bay
- Employee shuttle study resulted in pilot program within 12 months

THANK YOU & QUESTIONS?

