



DENVER
THE MILE HIGH CITY

Denver Parks & Recreation

Proposed Park Designations
3rd Round

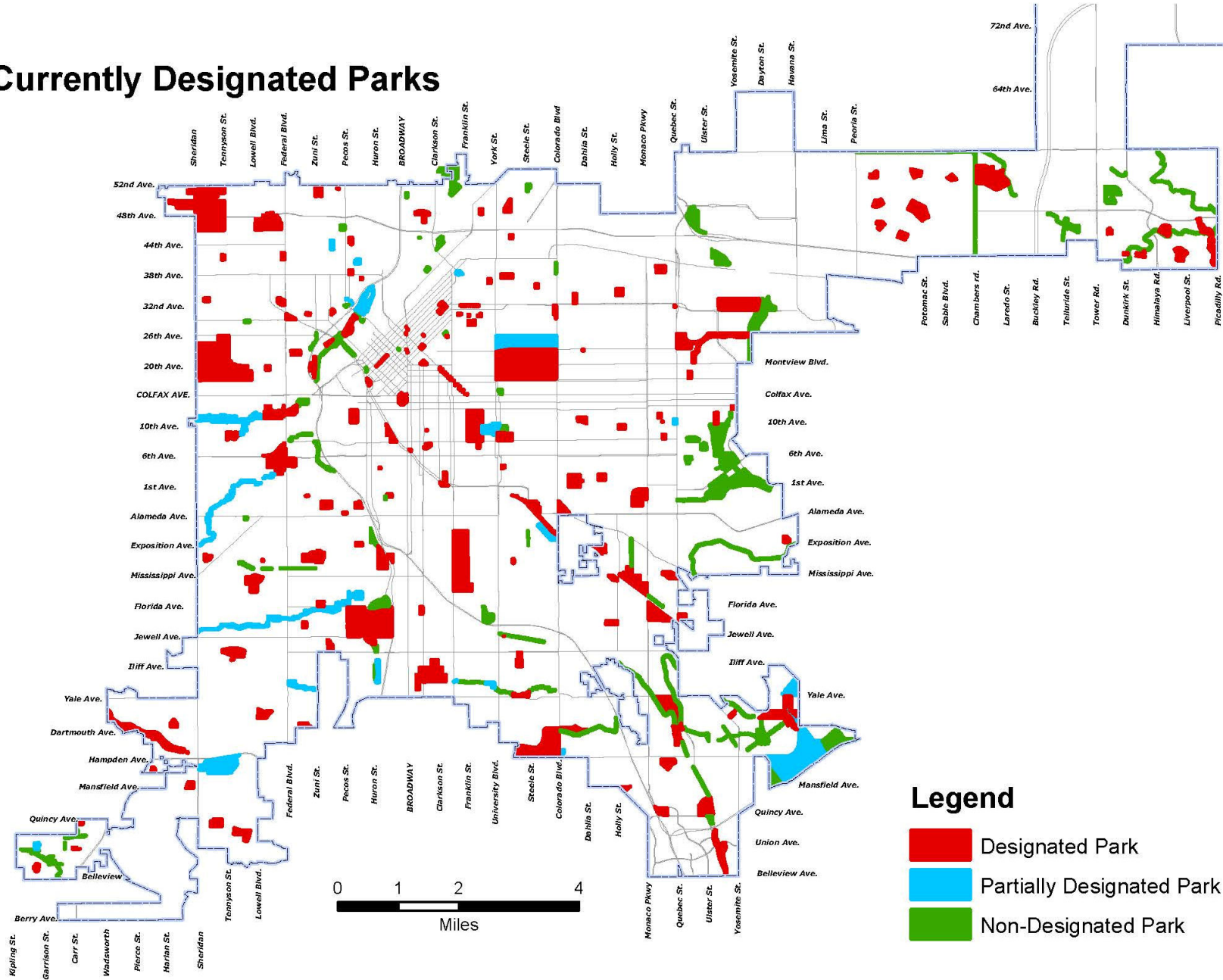
FOR CITY SERVICES VISIT | CALL
DenverGov.org | **311**



Park Designation Status

- Beginning of 2013
 - Approximately 68% of Parks were already designated
- 1st Round - April 2013
 - Approximately 180 acres became designated
 - Approximately 72% of system designated as parkland
- 2nd Round – January 2014
 - Approximately 275 acres became designated
 - Approximately 78% of system designated as parkland
- 3rd Round
 - Approximately 164 acres to become designated
 - Approximately 82% of system will be designated as parkland

Currently Designated Parks





Designations – Spring 2014

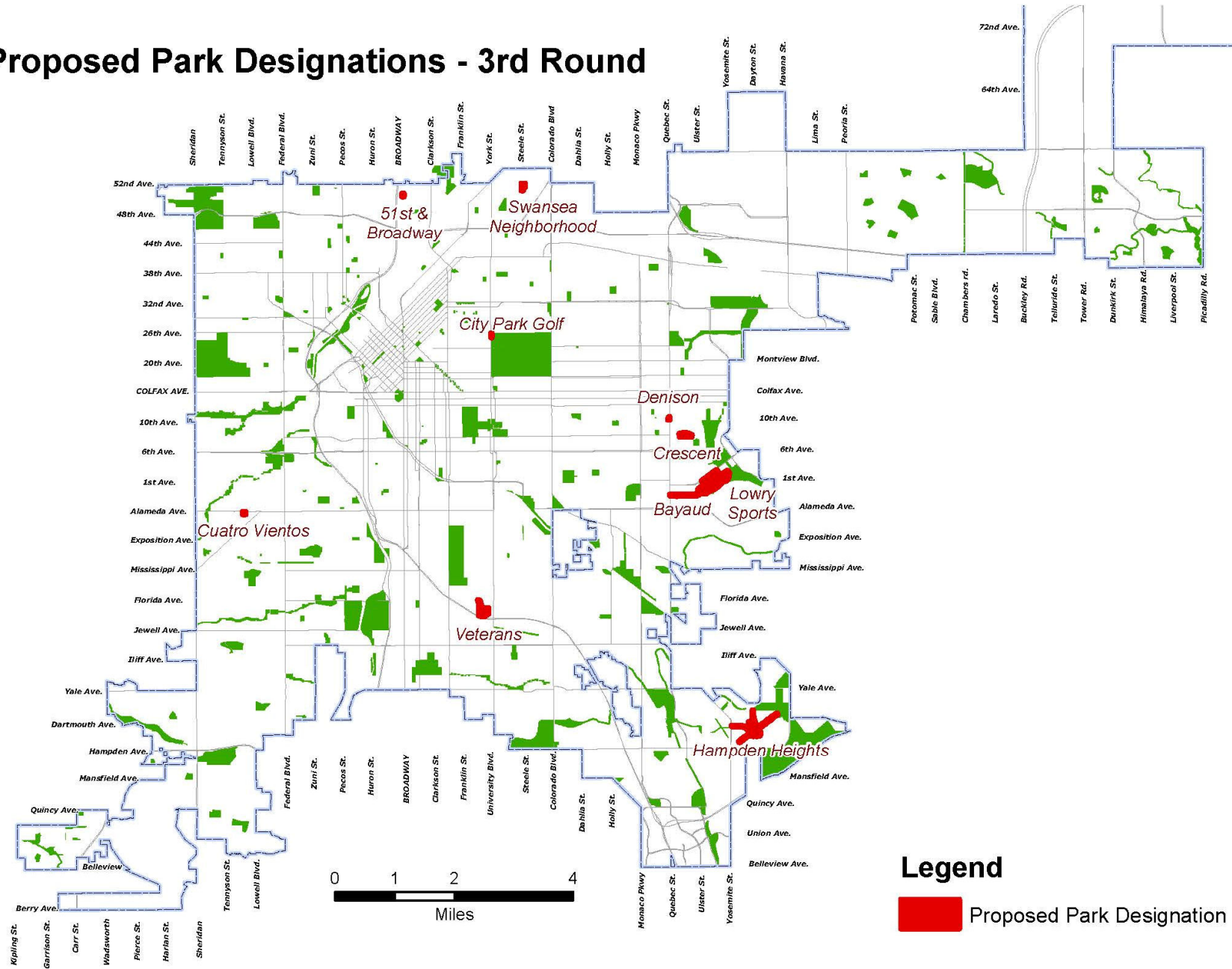
LOCATION NAME	PARK TYPE	GIS ACRES	MAINT DIST	COUNCIL DIST
Bayaud Park	Neighborhood	7.0	NE	5
Lowry Sports Complex	Athletic Complex	95.2	NE	5
Crescent Park	Neighborhood	7.2	NE	5
Cuatro Vientos/Four Winds Park	Neighborhood	1.2	SW	3
51st & Broadway Park**	Pocket	0.7	NW	9
Swansea Neighborhood Park	Neighborhood	3.3	NW	9
Hampden Heights Park	Community	32.5	E	4
Veterans Park	Community	16.4	SW	6
City Park Golf Addition *	Community	0.5	E	8
Denison Park Addition *	Neighborhood	0.4	E	5

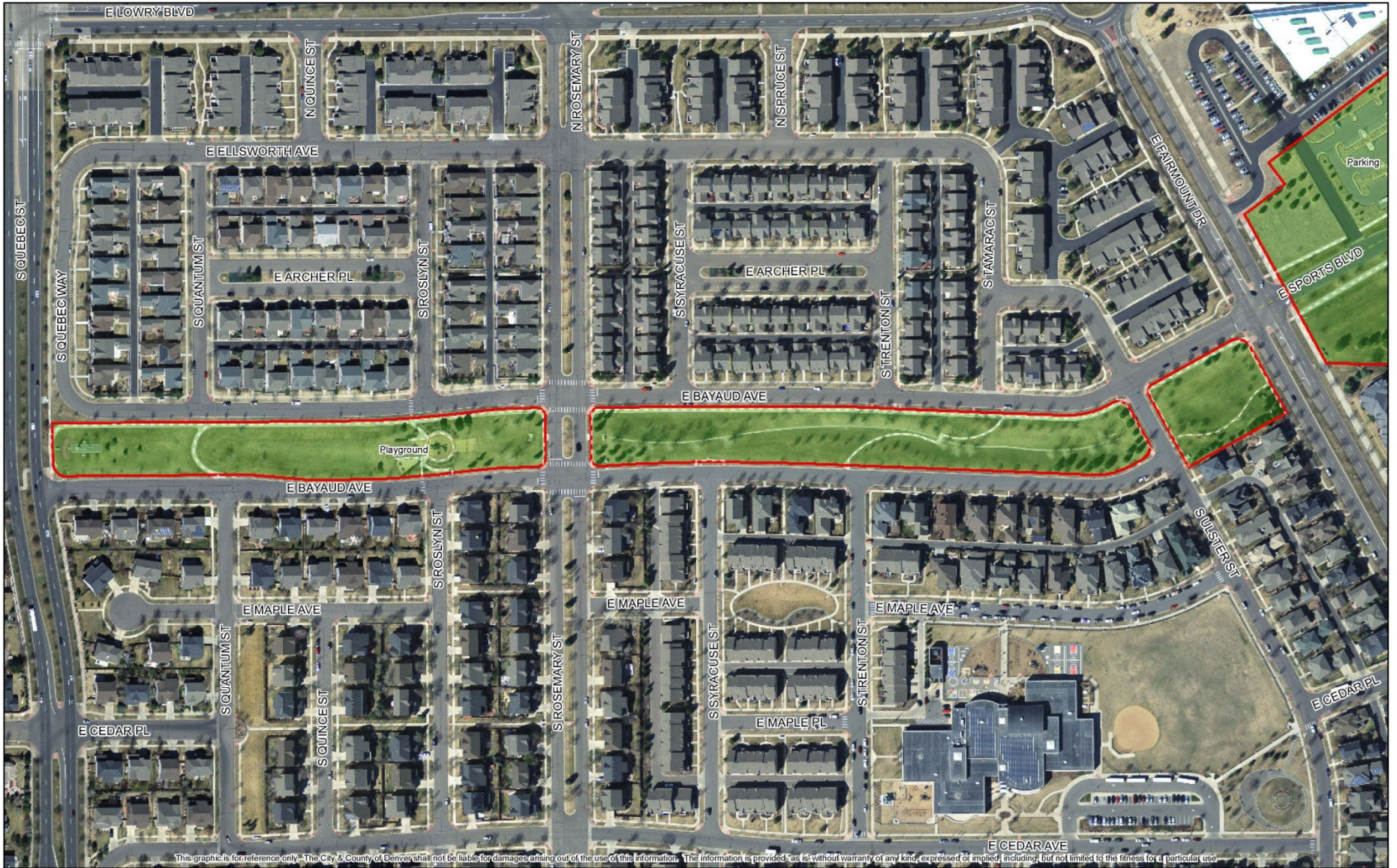
* Designation of additional parcel to complete Park Designation for the Park site.

** Partial Designation of Park site.

Total Acres:	164
---------------------	------------

Proposed Park Designations - 3rd Round





Bayaud Park

Aerial Imagery - 2012

- Designation Boundary
- Park Boundary

1 inch = 180 feet at 11x17

100
Map Scale In Feet





This graphic is for reference only. The City & County of Denver shall not be liable for damages arising out of the use of this information. The information is provided "as is" without warranty of any kind, expressed or implied, including, but not limited to, the fitness for a particular use.

City Park Golf Course

Aerial Imagery - 2012

- Designation Boundary
- Park Boundary

1 inch = 100 feet at 11x17
 100
 Map Scale In Feet





Crescent Park

Aerial Imagery - 2012

- Designation Boundary
- Park Boundary

1 inch = 100 feet at 11x17

100
Map Scale In Feet





This graphic is for reference only. The City & County of Denver shall not be liable for damages arising out of the use of this information. The information is provided "as is" without warranty of any kind, expressed or implied, including, but not limited to the fitness for a particular use.

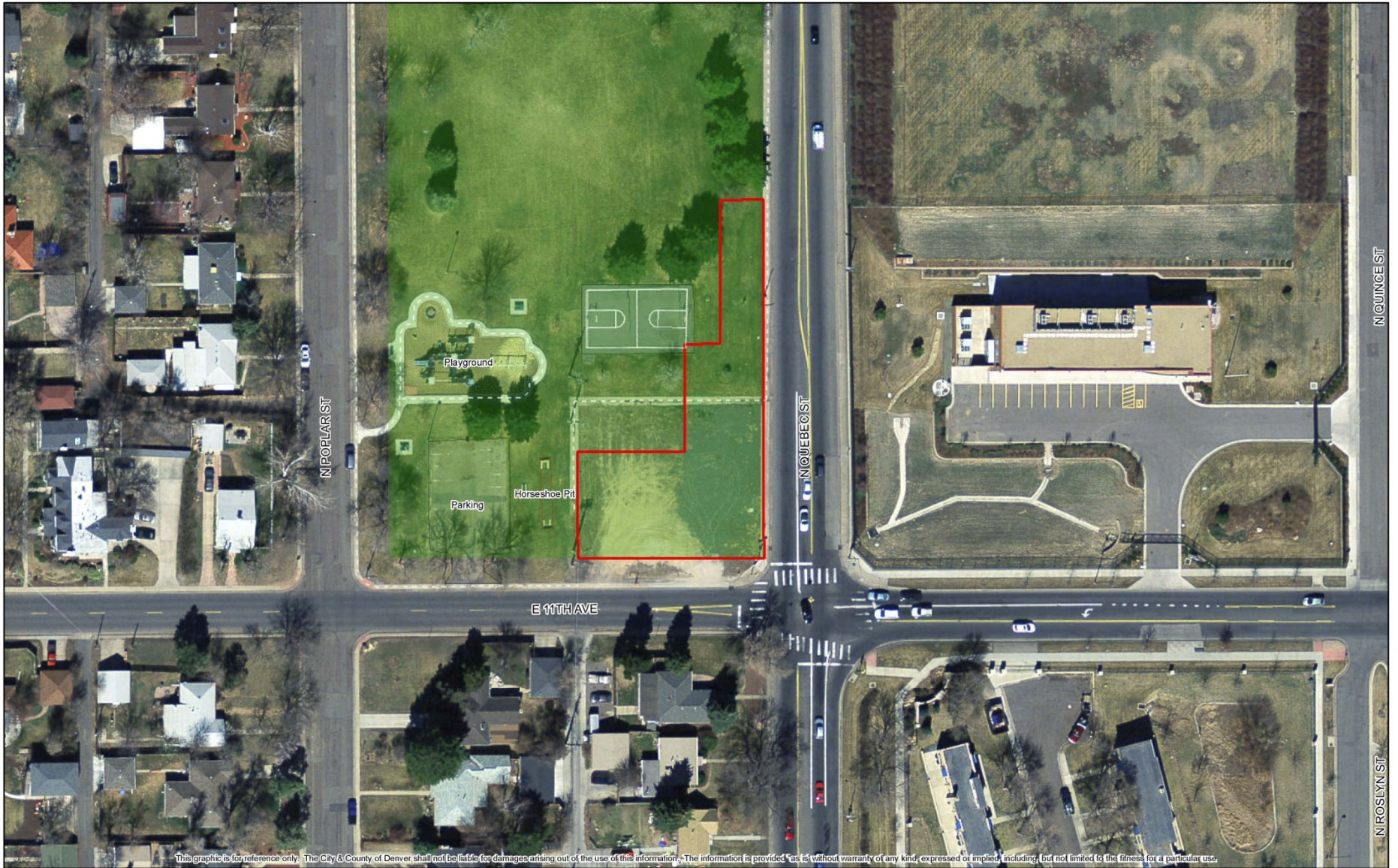
Cuatro Vientos / Four Winds Park

Aerial Imagery - 2012

- Designation Boundary
- Park Boundary

1 inch = 50 feet at 11x17
 100
 Map Scale In Feet





This graphic is for reference only. The City & County of Denver shall not be liable for damages arising out of the use of this information. The information is provided "as is" without warranty of any kind, expressed or implied, including, but not limited to, the fitness for a particular use.

Denison Park

Aerial Imagery - 2012

- Designation Boundary
- Park Boundary

1 inch = 60 feet at 11x17

100
Map Scale In Feet





Hampden Heights Park

Aerial Imagery - 2012

- Designation Boundary
- Park Boundary

1 inch = 308 feet at 11x17
 100
 Map Scale In Feet





This graphic is for reference only. The City & County of Denver shall not be liable for damages arising out of the use of this information. The information is provided "as is" without warranty of any kind, expressed or implied, including, but not limited to the fitness for a particular use.

Lowry Sports Complex

Aerial Imagery - 2012

- Designation Boundary
- Park Boundary

1 inch = 317 feet at 11x17
 100
 Map Scale In Feet





Swansea Neighborhood Park

Aerial Imagery - 2012

- Designation Boundary
- Park Boundary

1 inch = 80 feet at 11x17

100
Map Scale In Feet





Unnamed 51st & Broadway

Aerial Imagery - 2012

- Designation Boundary
- Park Boundary

1 inch = 50 feet at 11x17

100

Map Scale In Feet





This graphic is for reference only. The City & County of Denver shall not be liable for damages arising out of the use of this information. The information is provided "as is" without warranty of any kind, expressed or implied, including, but not limited to the fitness for a particular use.

Veterans Park

Aerial Imagery - 2012

- Designation Boundary
- Park Boundary

1 inch = 150 feet at 11x17
 100
 Map Scale In Feet





Proposed Designations – 4th Round

LOCATION NAME	PARK TYPE	GIS ACRES	MAINT DIST	COUNCIL DIST
Lakewood / Dry Gulch Park	Community	52.1	NW	3
City of Ulaanbaatar	Neighborhood	5.1	NE	5
Montclair Recreation Center Park	Rec Center	5.6	NE	5
Highland Senior Center Park	Neighborhood	1.9	NW	1
Central Park Recreation Center	Rec Center	10.6	NE	11
Prairie Park	Open Space	7.4	SW	6

Total Acres:	83
---------------------	-----------



Proposed Designations – 5th Round

LOCATION NAME	PARK TYPE	GIS ACRES	MAINT DIST	COUNCIL DIST
La Familia Recreation Center	Rec Ceter	0.9	SW	9
Habitat Park	Open Space	7.7	SW	7
Centennial Park	Special Use	5.5	NW	9
Pasquinel's Landing Park	Neighborhood	3.4	SW	7
Unnamed Stanford & Balsam	Open Space	10.2	SW	2

Total Acres:	28
---------------------	-----------