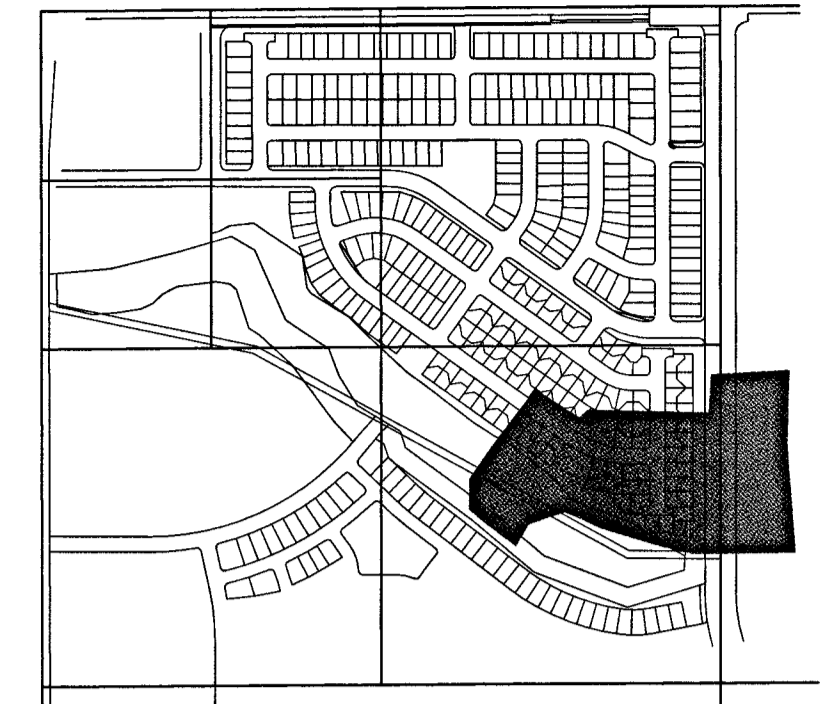
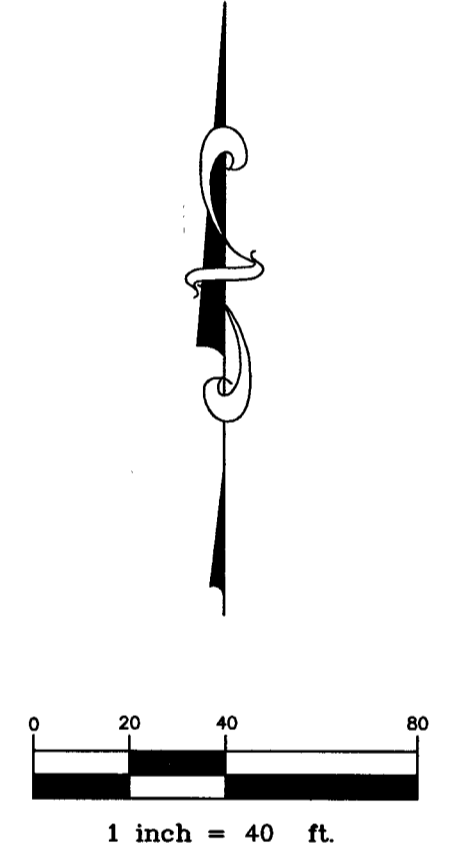
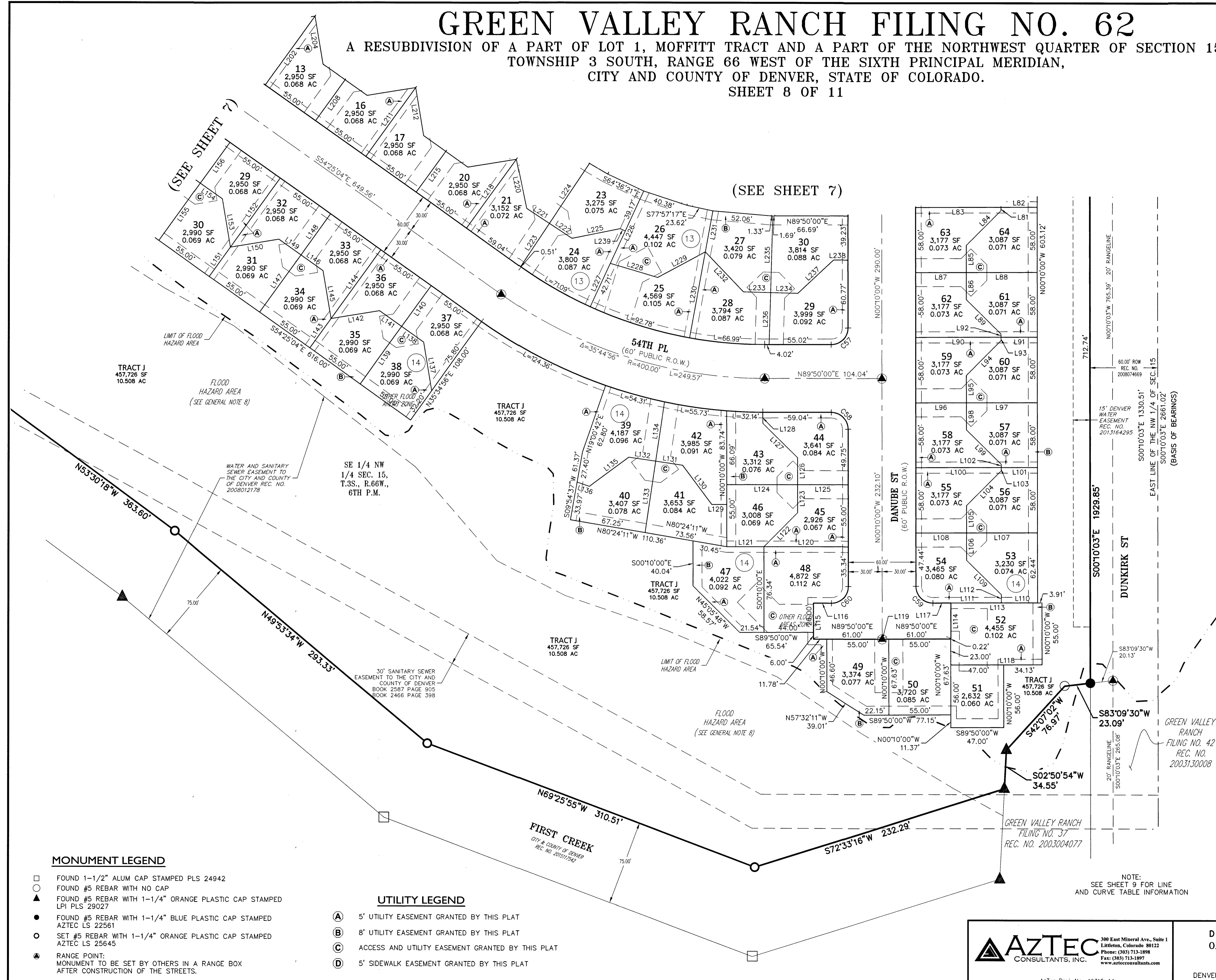


GREEN VALLEY RANCH FILING NO. 62

A RESUBDIVISION OF A PART OF LOT 1, MOFFITT TRACT AND A PART OF THE NORTHWEST QUARTER OF SECTION 15,
TOWNSHIP 3 SOUTH, RANGE 66 WEST OF THE SIXTH PRINCIPAL MERIDIAN,
CITY AND COUNTY OF DENVER, STATE OF COLORADO.
SHEET 8 OF 11



KEY MAP
NOT TO SCALE



- MONUMENT LEGEND**
- FOUND 1-1/2" ALUM CAP STAMPED PLS 24942
 - FOUND #5 REBAR WITH NO CAP
 - ▲ FOUND #5 REBAR WITH 1-1/4" ORANGE PLASTIC CAP STAMPED LPI PLS 29027
 - FOUND #5 REBAR WITH 1-1/4" BLUE PLASTIC CAP STAMPED AZTEC LS 22561
 - SET #5 REBAR WITH 1-1/4" ORANGE PLASTIC CAP STAMPED AZTEC LS 25645
 - RANGE POINT: MONUMENT TO BE SET BY OTHERS IN A RANGE BOX AFTER CONSTRUCTION OF THE STREETS.

- UTILITY LEGEND**
- (A) 5' UTILITY EASEMENT GRANTED BY THIS PLAT
 - (B) 8' UTILITY EASEMENT GRANTED BY THIS PLAT
 - (C) ACCESS AND UTILITY EASEMENT GRANTED BY THIS PLAT
 - (D) 5' SIDEWALK EASEMENT GRANTED BY THIS PLAT

NOTE:
SEE SHEET 9 FOR LINE
AND CURVE TABLE INFORMATION

AZTEC
CONSULTANTS, INC.
300 East Mineral Ave., Suite 1
Littleton, Colorado 80122
Phone: (303) 713-1898
Fax: (303) 713-1899
www.aztecconsultants.com

DEVELOPER
OAKWOOD HOMES

4908 TOWER ROAD
DENVER, COLORADO 80249-6684
(303) 486-8500

DATE OF PREPARATION: 2015-06-17

SCALE: 1" = 40'

SHEET 8 OF 11



FOR AND ON BEHALF OF
AZTEC CONSULTANTS, INC.