



910 Galapago Street Landmark Designation Application

Denver City Council
December 21, 2020

910 Galapago Street

Location

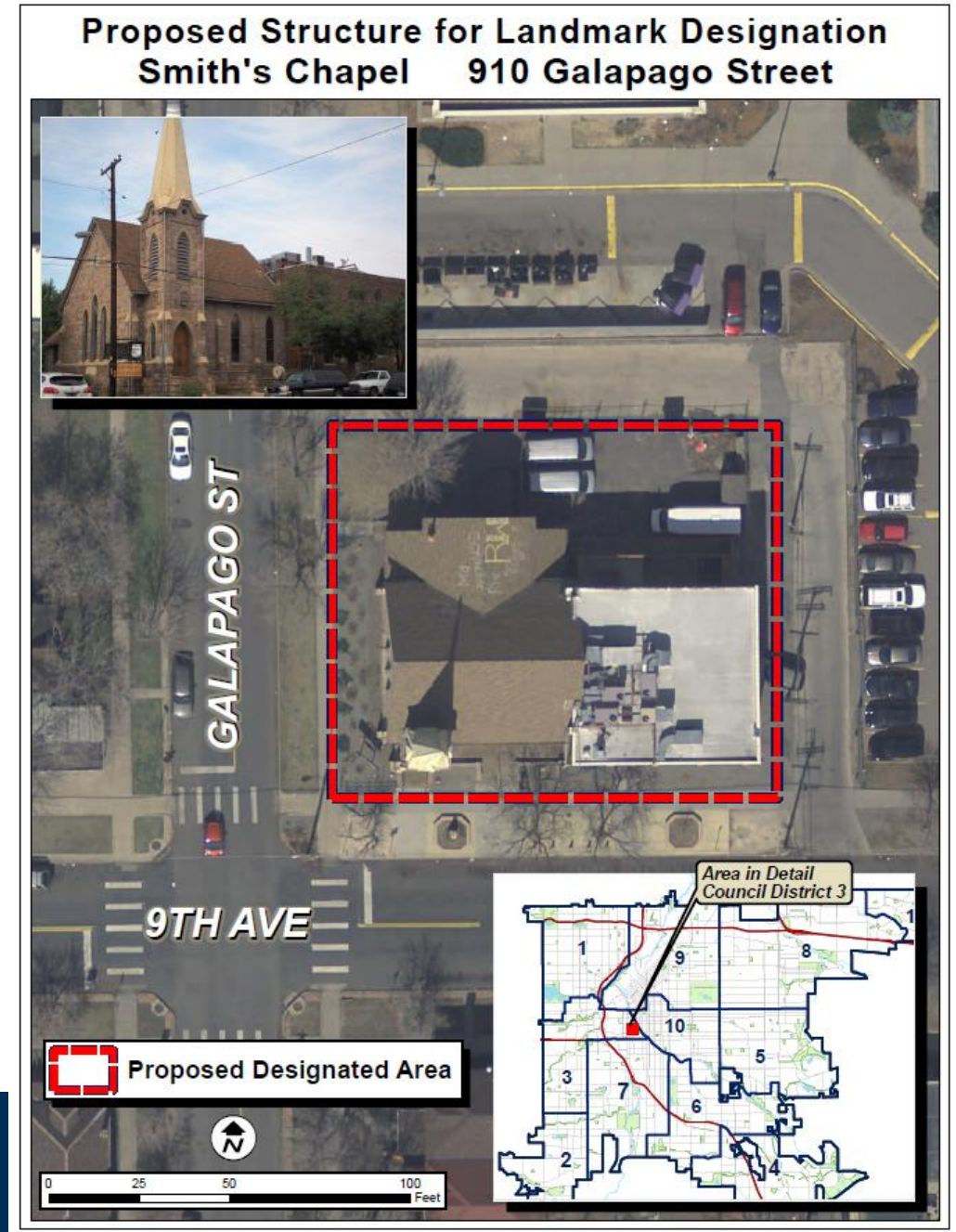
- Council District # 3
- La Alma Lincoln Park neighborhood
- Corner of 9th and Galapago

Zoning

- U-RH-3A
- UO-3 (requires Landmark Designation)

Owner and Applicant

- Matt Slaby
- Historic Denver assisted with designation app

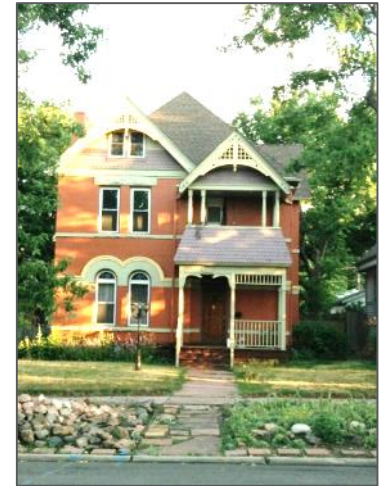


Landmark Designation Eligibility

Application must be complete, and the structure must meet the following criteria *:

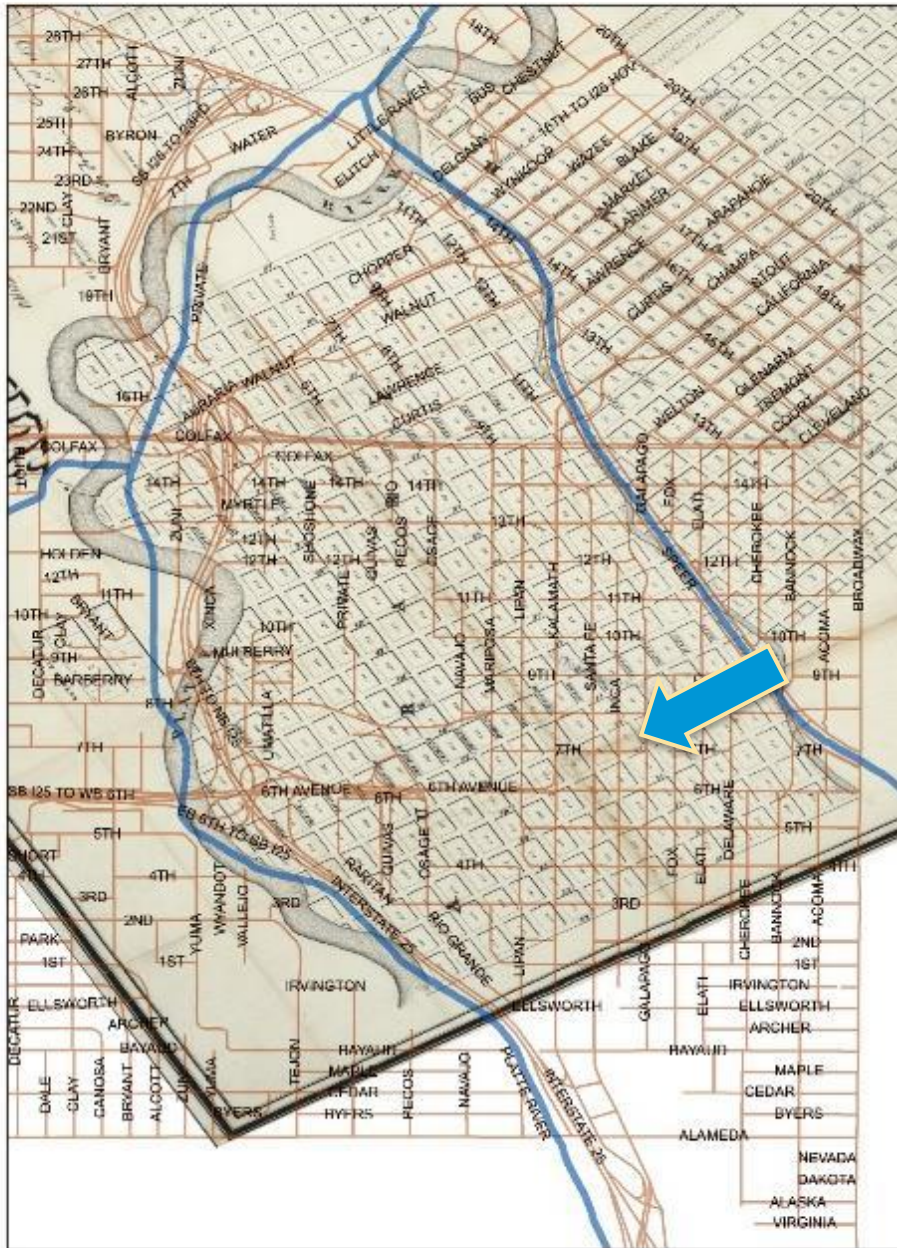
1. The structure maintains its integrity
2. The structure is more than 30 years old, or is of exceptional importance
3. The structure meets at least three of ten criteria
4. The LPC considers the structure's historic context

*Per Landmark Preservation Ordinance (Chapter 30, DRMC)



Landmark Designation Criteria

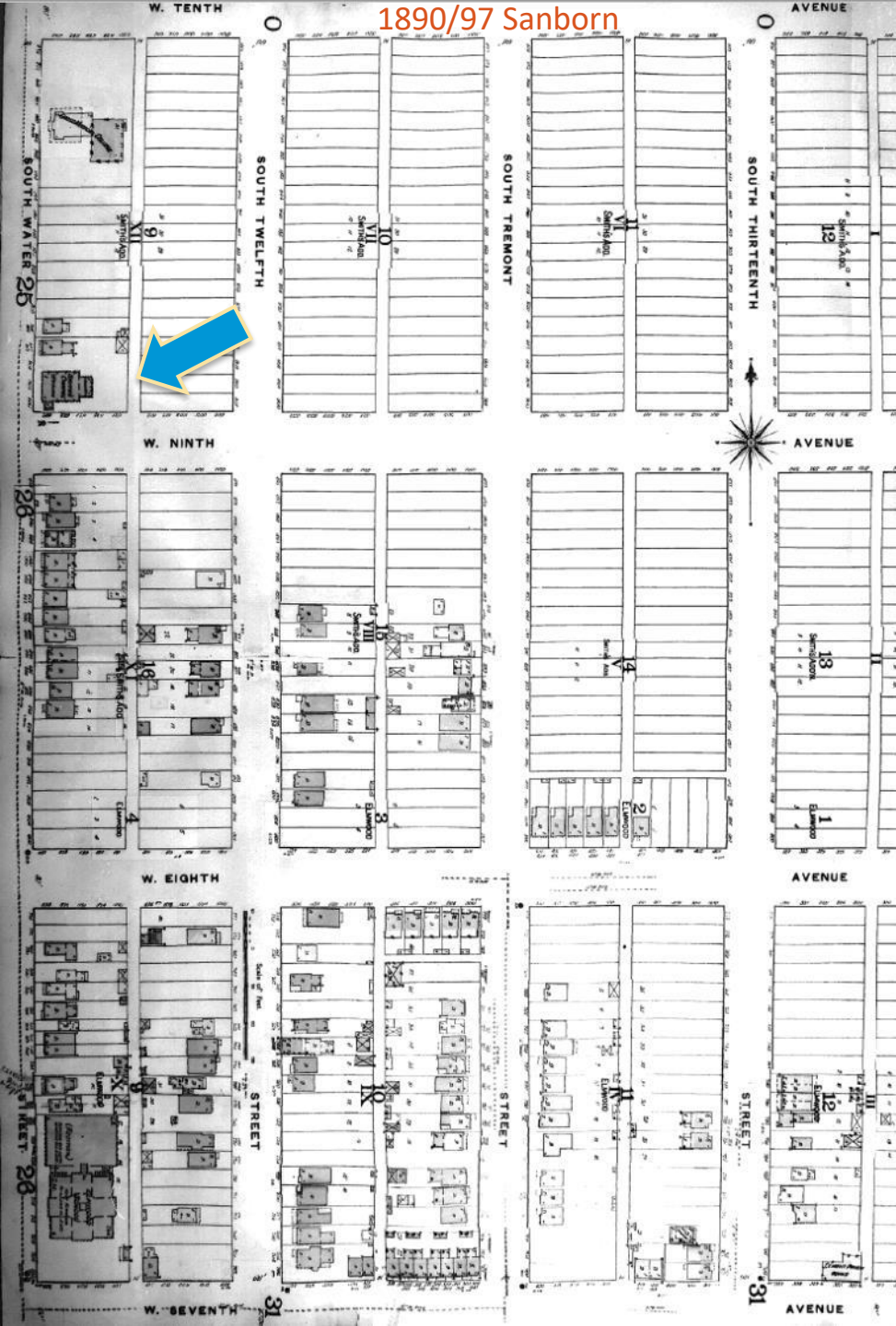
- A. It has a direct association with a significant historic event or with the historical development of the city, state, or nation;
- B. It has direct and substantial association with a recognized person or group of persons who had influence on society;
- C. It embodies the distinctive visible characteristics of an architectural style or type;
- D. It is a significant example of the work of a recognized architect or master builder;
- E. It contains elements of design, engineering, materials, craftsmanship, or artistic merit which represent a significant innovation or technical achievement;
- F. It represents an established and familiar feature of the neighborhood, community or contemporary city, due to its prominent location or physical characteristics;
- G. It promotes understanding and appreciation of the urban environment by means of distinctive physical characteristics or rarity;
- H. It represents an era of culture or heritage that allows an understanding of how the site was used by past generations;
- I. It is a physical attribute of a neighborhood, community, or the city that is a source of pride or cultural understanding;
- J. It is associated with social movements, institutions, or patterns of growth or change that contributed significantly to the culture of the neighborhood, community, city, state, or nation.



Auraria Town Company 1859 map by Fosdick & Tappan atop a 21st Century Denver street map. St. Map overlay courtesy of William Doyle, 2020.

A. Direct association with a significant historic event or with the historical development of the city

- Directly tied to the development of Denver's Westside
 - One of Denver's oldest residential neighborhoods
 - Residential neighborhood working-class and immigrants
- In 1870s, Alexander Cameron Hunt an early resident and developer
 - Provided land to the Denver & Rio Grande Railroad for Burnham
- Notable Denver businessman and developer John W. Smith
 - Platted Capitol Hill subdivision
 - Developed early water supply – Smith's Ditch
- Smith deeded land and provided money for construction of chapel
 - Platted subdivision



A. Direct association with a significant historic event or with the historical development of the city

- In 882 Smith's Chapel was "situated on the outskirts of the city"
 - Likely a form of advertising for Smith's subdivision
 - Represented growth of area
 - Well developed enough to support church
 - One of eight churches between 1882 and 1893
 - Oldest remaining extant church in La Alma Lincoln Park

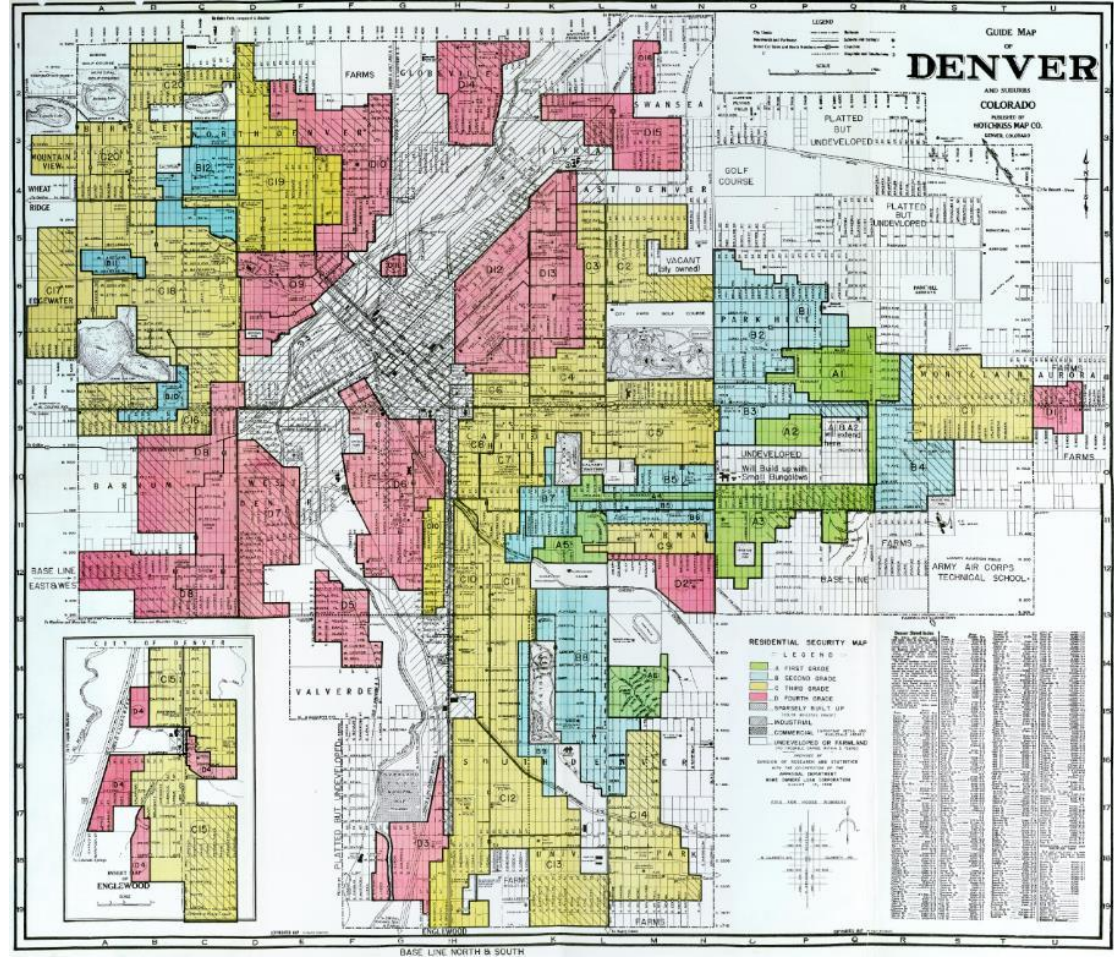


C. Embodies the distinctive visible characteristics of an architectural style

- Gothic Revival style
 - Designated on State Register
 - Steeply pitched front-gabled roof
 - Ashlar masonry - rhyolite stone
 - Engaged buttresses
 - Lancet windows and door
 - Prominent steeple

J. Associated with social movements, institutions, that contributed significantly to the culture of the neighborhood, community, or city

- Working-class immigrant community
 - Changed from primarily European to Latino residents
 - Bracero Program (1942-1964) invited guest workers
 - Promised free housing as encouragement
- Discriminatory redlining
 - Less investment in neighborhood
 - Church of United Brethren dissolved



J. Associated with social movements, institutions, that contributed significantly to the culture of the neighborhood, community, or city

- Denver Inner City Parish acquired chapel in 1961
 - Denver Area Council of Churches as interdenominational organization
 - Served as a place of worship, a social agency, a food bank, a school, a meeting center
 - Lobbied for welfare, student, and farm workers' rights
 - Became “meaningful institution at the heart of the community”
 - One of many mutualistas arising in community



J. Associated with social movements, institutions, that contributed significantly to the culture of the neighborhood, community, or city

- Growth of Chicano Movement in Denver
 - National Civil Rights Movement and opposition to Vietnam
 - Systematic discrimination that had affected Westsiders
 - Federal funding through *Denver Opportunity*
 - Leaders forming within the community
- Westside/La Alma Lincoln Park became central to Chicano Movement
 - Denver Inner City Parish was important component



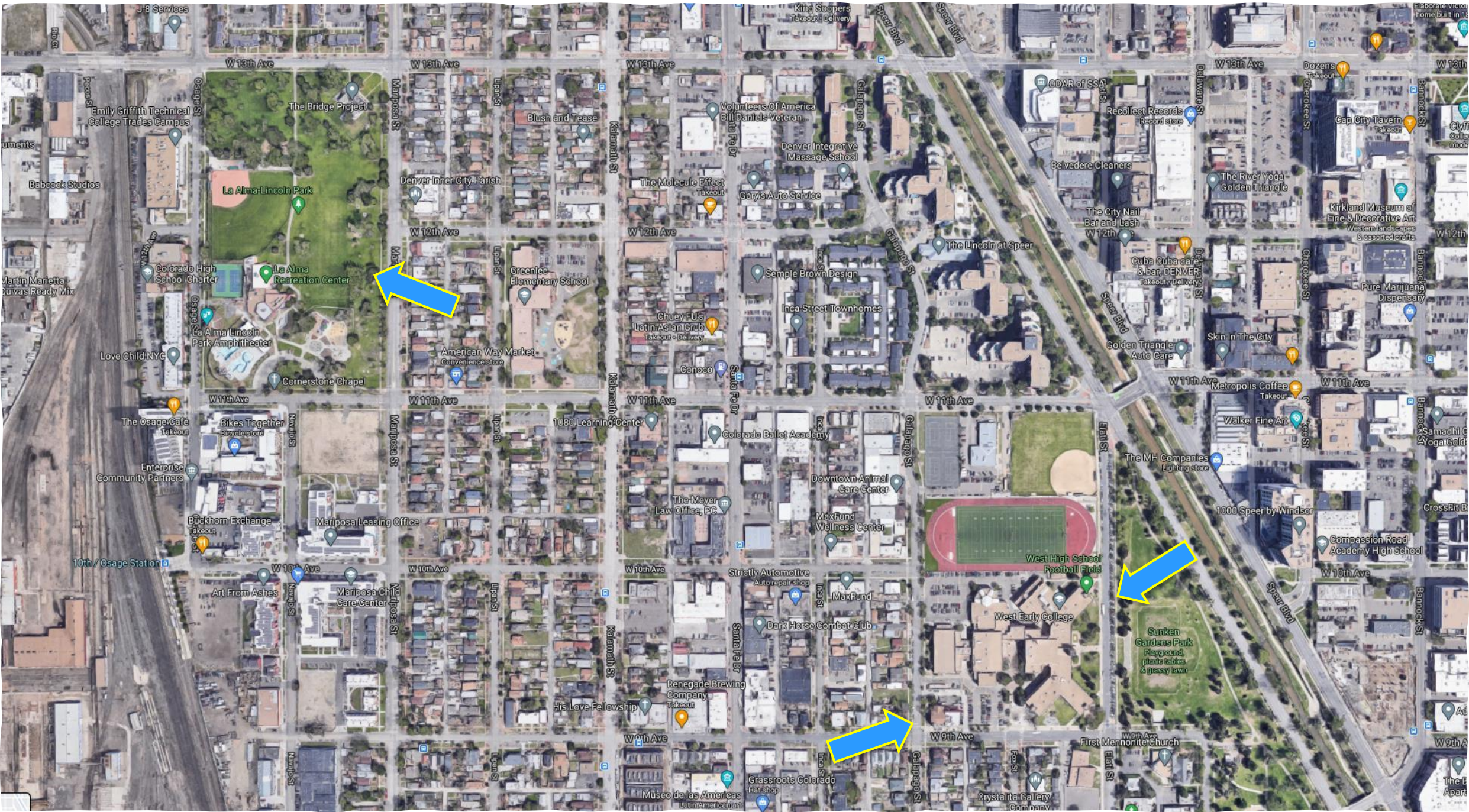
Murals by Emanuel Martinez

J. Associated with social movements, institutions, that contributed significantly to the culture of the neighborhood, community, or city

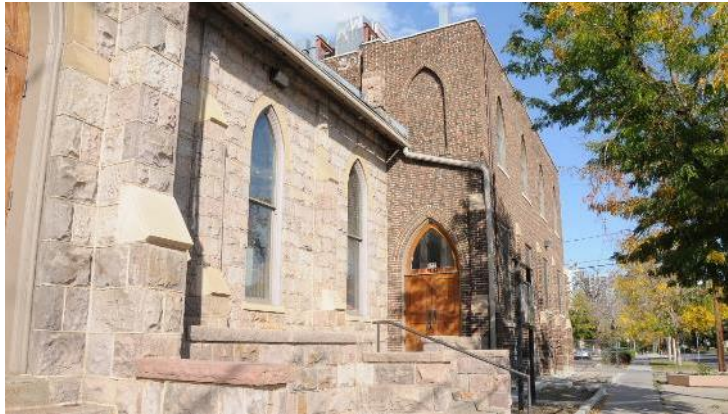
- Walkout of 1969 (March 20th)
 - “the central event in Denver for what was later called the Chicano Movement.”
 - Late-1968 walkouts in L.A.
 - West High School history teacher
 - Ill-treatment by a teacher and insults about Chicano culture
 - 300 students and family members walked out
 - Police arrived wearing gas masks and carrying billy clubs
 - Some protesters sought shelter in DICP



Screen shot from “West High School March 1969 Blow Out!”
Produced by City of Denver Commission on Community
Relations, c. 1969-1970. (Source:
<https://www.youtube.com/watch?v=yJqByLcDBLg>)



Integrity



- Additions and alterations within period of significance
 - 1890 – 1897
 - Cross gable
 - 1923
 - Side addition and stone porch
 - Unknown date
 - Stained-glass windows removed
 - Frames restored via 2003 SHF grant
- Alterations end period of significance
 - 1986
 - Significant internal changes
 - Egress on north (rear) façade
 - 1923 addition windows changed to aluminum
- Maintains good integrity
 - Original location
 - Feeling, setting, and association
 - Design, materials, and workmanship



Historic Context

At its time of construction in 1882, 910 Galapago was one of the first chapels or churches in the neighborhood, reflecting the growth of La Alma Lincoln Park.

Designed in prevalent architectural style for churches of the time.

In the 1960s the chapel then became the home of the Denver Inner City Parish, an organization directly associated with important moments and leaders of the Chicano Movement in Denver.



Public Comment

- Written Comments
 - One in support
- Landmark Preservation Commission Public Hearing
 - One in support

Landmark Designation Review Criteria

- Over 30 years of age
- Application meets at least three criteria
 - A. It has a direct association with a significant historic event or with the historical development of the city, state, or nation;
 - C. It embodies the distinctive visible characteristics of an architectural style or type;
 - J. It is associated with social movements, institutions, or patterns of growth or change that contributed significantly to the culture of the neighborhood, community, city, state, or nation.
- Retains Integrity
- LPC considered the historic context

- Landmark Preservation Commission unanimously motioned to forward to City Council for review
- CPD Staff recommends approval