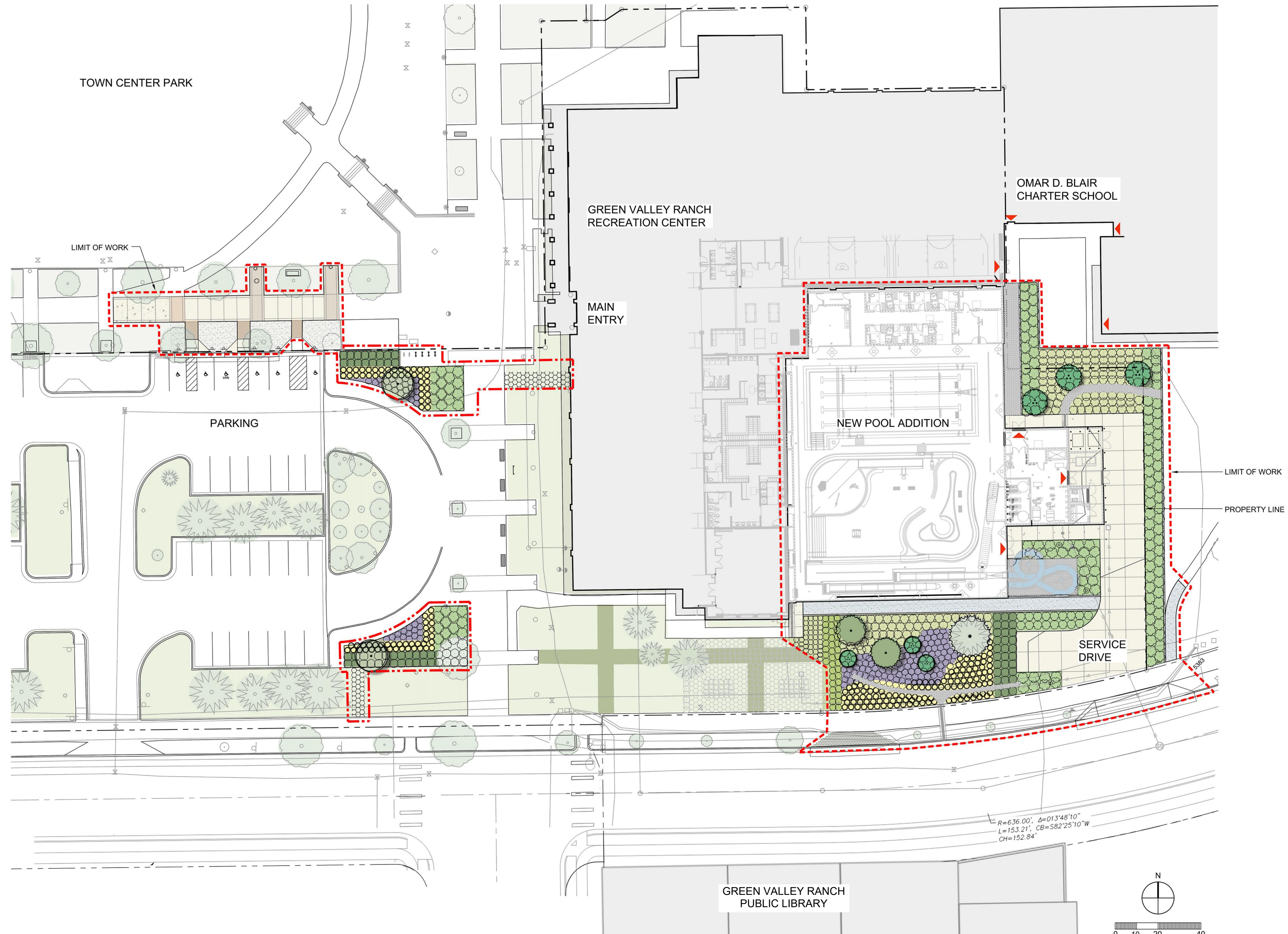


TOWN CENTER PARK
POND

PARK BUILDING PLAN

MAX SQUARE FOOTAGE OF NEW ADDITION = 16,250 SF
MAX HEIGHT OF NEW ADDITION = 42'-0"



475 Lincoln Street, Suite 100
Denver, CO 80203
1303.308.0200
1303.308.0222
www.perkinswill.com

CONSULTANTS

CIVIL
SAN ENGINEERING, LLC
1150 W. LITTLETON BLVD., SUITE 200
LITTLETON BLVD., SUITE 200 LITTLETON,
CO 80120

STRUCTURAL
SAN ENGINEERING, LLC
1150 W. LITTLETON BLVD., SUITE 200
LITTLETON, CO 80120

MEP
THE BALLARD GROUP
2825 SOUTH WADSWORTH BLVD. #200
LAKEWOOD, CO 80227

LANDSCAPING
MUNDUS BISHOP
1525 RALEIGH ST., SUITE 310
DENVER, CO 80204

ELECTRICAL
INNOVATION ELECTRICAL
7550 WEST YALE AVE. #B-130 DENVER, CO
80227

AQUATICS
COUSILMAN-HUNSAKER
12265 WEST BAYLAUD AVE. SUITE 110
LAKEWOOD, CO 80228

OWNER
CITY OF DENVER
PUBLIC WORKS DEPARTMENT 201 W.
COLFAX AVE. DEPT. 608 DENVER CO,
80202
FACILITY

CONTRACTOR

PROJECT



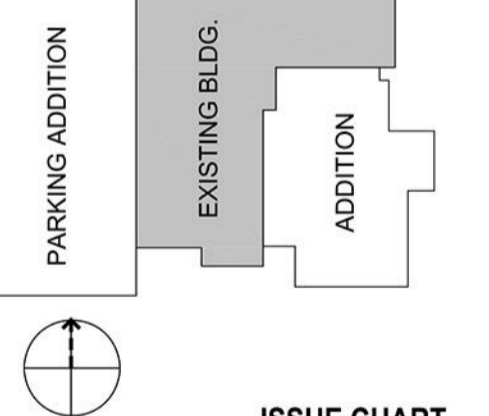
GREEN VALLEY
RANCH - POOL
ADDITION



CITY OF DENVER
201 W. COLFAX AVE

BID ADDENDUM 03/30/2021

KEYPLAN



ISSUE CHART

BID ADDENDUM 03/30/2021

NO.	PERMIT DOCUMENTS	ISSUED
1	221917.000	221917.000

Job Number 221917.000
Drawn P/BS
Checked RS
Approved RS/TB
TITLE

GVR Pool -
Park Building Plan

SHEET NUMBER

1.0