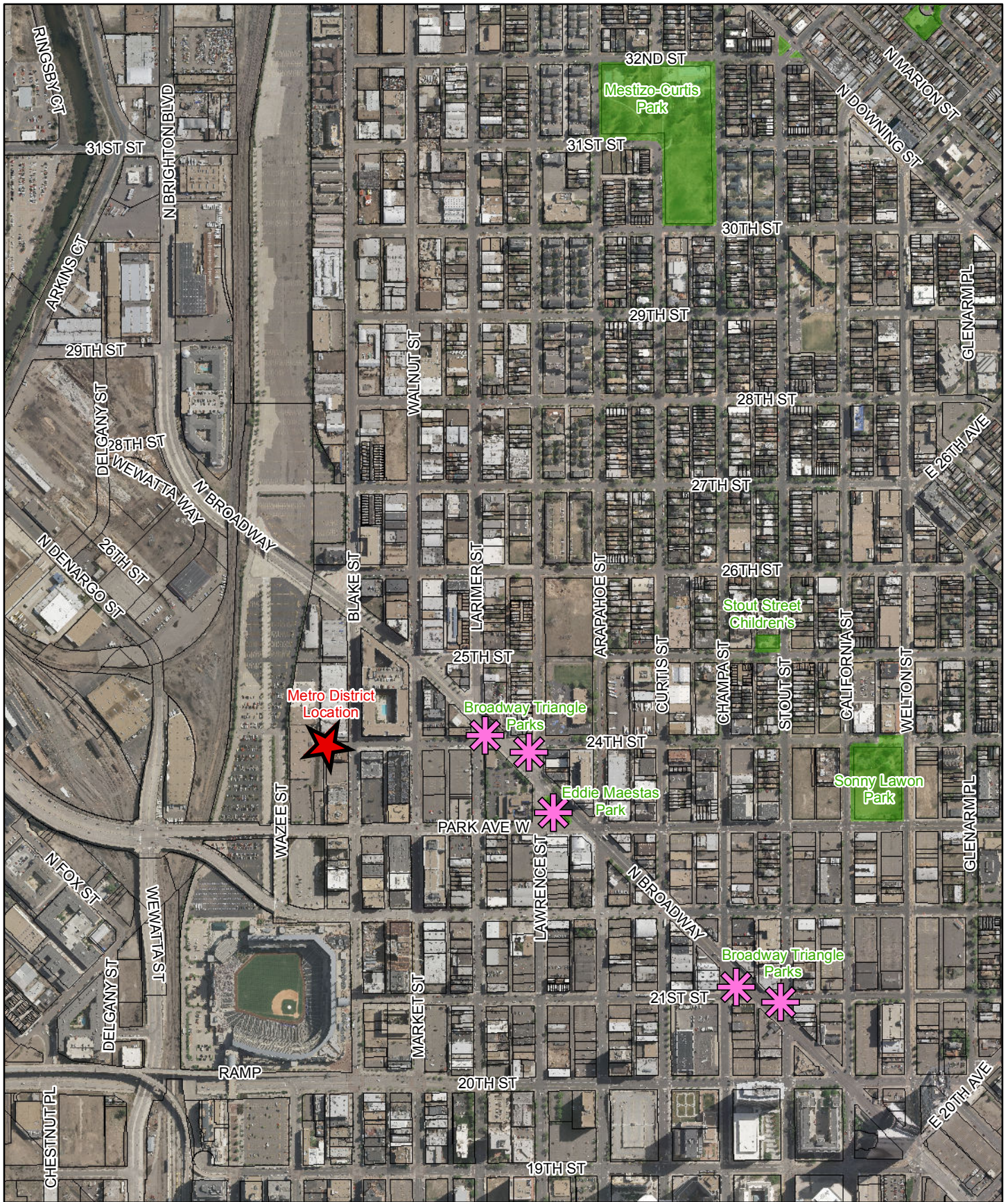




# Community Coordinating Metro District

A Step Forward to Finding, Funding,  
and Implementing Solutions for the  
Triangle Park Area





# Broadway Triangle Parks Context Map





# Current Variables

- Area land ownership is in multiple small parcels so there is no large single owner to facilitate efforts in the area.
- Complex problems on City owned land caused by homelessness and illegal drugs.
- Active group of citizens and organizations who are seeking to join efforts with the City.
- No single person or entity has sufficient resources to create and implement a solution.

# District Concept

- The District would provide a platform to bring together stakeholders to make improvements to City Park land
- District funding would come from grants, donations and other non-City governmental funding sources.
- District would not have the ability to levy taxes or issue debt.
- Improvements would compliment the North East Neighborhood plan currently being developed.
- 7 member board of directors consisting of stakeholders
- Physical location of the district located on a private parcel of land
- The service area of the district will be the City owned Triangle Parks and surrounding area.

# Benefits

- District would supplement City efforts to pursue resources and solutions.
- Creates a partnership between the active citizen base, social service providers, businesses, and the City.
- Creates a platform to pursue funding sources, coordinate volunteer efforts, and make physical improvements in and around park land.