



ASSET MANAGEMENT - ACHIEVING VISION 100 and OPERATION 2045

MARCH 19, 2025

PHIL WASHINGTON
CHIEF EXECUTIVE OFFICER

DAVE LAPORTE
CHIEF OPERATING OFFICER

BRYAN OLDHAM
SENIOR DIRECTOR ASSET MANAGEMENT

ASSET MANAGEMENT AND VISION 100



100 MILLION ANNUAL PASSENGERS
MISSION: THROUGH THE POWER OF OUR PEOPLE, BE THE BEST IN CLASS

SUSTAINABILITY & RESILIENCY | EQUITY, DIVERSITY, INCLUSION & ACCESSIBILITY
OPERATIONAL EXCELLENCE | ENHANCING THE CUSTOMER EXPERIENCE

- 1 EMPOWERING OUR PEOPLE**
 - Provide necessary tools and growth opportunities, enabling our employees to excel in their roles and contribute to DEN's success
 - Recruit, train, and support ongoing learning, innovation, and professional growth
 - Establish and preserve belonging and inclusion as cornerstones of DEN's employee culture
- 2 GROWING OUR INFRASTRUCTURE**
 - Build facilities and infrastructure through well-coordinated planning and new service delivery models
 - Grow revenue across existing and new streams to maintain financial resiliency
 - Become the most environmentally sustainable airport in the world
- 3 MAINTAINING WHAT WE HAVE**
 - Ensure longevity, reliability, and performance of existing facilities and assets
 - Consistently surprise and delight our customers by providing an exceptional experience at DEN
 - Leverage data-driven insights to inform decision-making processes, optimize operations, and drive innovation
- 4 EXPANDING OUR GLOBAL CONNECTIONS**
 - Expand our air network to the continent of Africa, and other underserved international destinations
 - Leverage our strong performance to grow our domestic air network

VISION 100 DEN

Asset Management is the set of strategies used to plan for the

- Maintenance,
- Rehabilitation, and the
- Capital Investment Replacement needs

of any of DEN's infrastructure asset, optimizing the asset's total cost of ownership

Vertical assets are typically referred to as single location assets like buildings, bridges, assets (e.g., air conditioning units) within the buildings

Horizontal assets are typically assets that span an area like underground pipes, roads, runways, etc.

FIVE CORE QUESTIONS FOR ASSET MANAGEMENT



What is the current state of DEN assets?



What are DEN's required levels of service?



What DEN assets are critical?

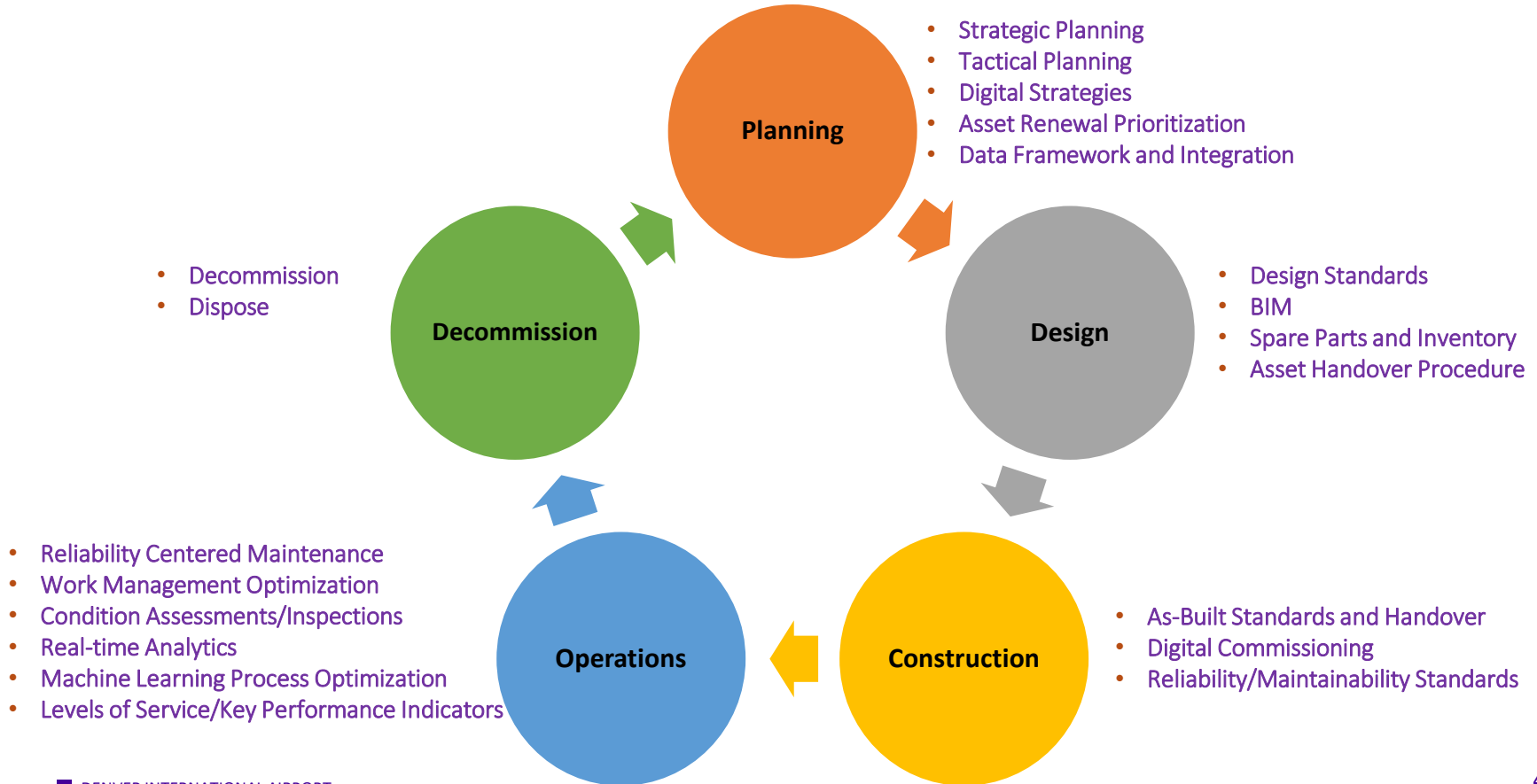


What are the best Operation & Maintenance and Capital Improvement Plan investment requirements?



What is DEN's best long-term strategy?

TYPICAL ASSET LIFECYCLE



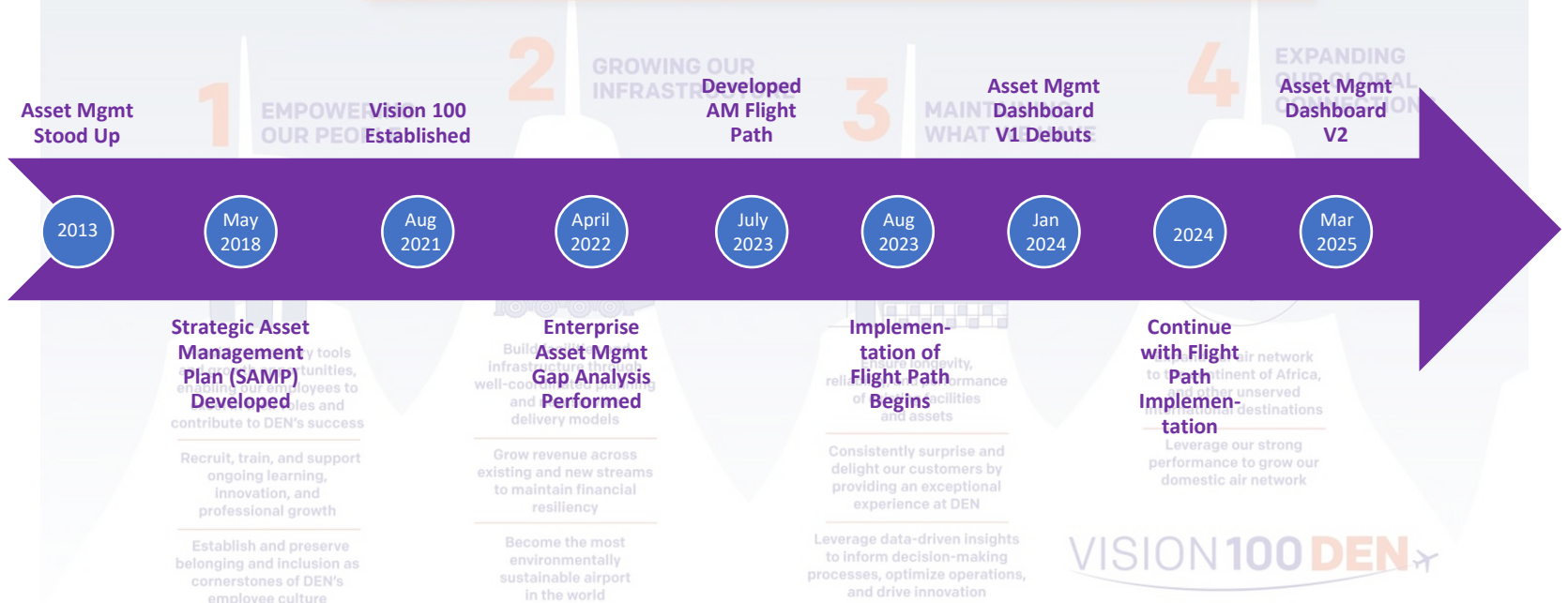
DEN ASSET MANAGEMENT HISTORY



100 MILLION ANNUAL PASSENGERS

MISSION: THROUGH THE POWER OF OUR PEOPLE, BE THE BEST IN CLASS

SUSTAINABILITY & RESILIENCY | EQUITY, DIVERSITY, INCLUSION & ACCESSIBILITY
 OPERATIONAL EXCELLENCE | ENHANCING THE CUSTOMER EXPERIENCE



Strategic Asset Management Plan (SAMP) Developed

Developed tools and processes to support DEN's growth and contribute to DEN's success

Recruit, train, and support ongoing learning, innovation, and professional growth

Establish and preserve belonging and inclusion as cornerstones of DEN's employee culture

Enterprise Asset Mgmt Gap Analysis Performed

Build a data-driven infrastructure that is well-coordinated and delivery models

Grow revenue across existing and new streams to maintain financial resiliency

Become the most environmentally sustainable airport in the world

Implementation of Flight Path Begins

Improve reliability, performance of facilities and assets

Consistently surprise and delight our customers by providing an exceptional experience at DEN

Leverage data-driven insights to inform decision-making processes, optimize operations, and drive innovation

Continue with Flight Path Implementation

Expand our network to other parts of Africa, and other unserved international destinations

Leverage our strong performance to grow our domestic air network

VISION 100 DEN

ASSET MANAGEMENT FLIGHT PATH



Late 2023 - Establish Fundamentals - COMPLETE

- Establish hierarchy of vertical assets
- Identify critical vertical asset classes
- Develop remaining useful life
- Identify rehab/replace assets
- Implement risk scoring



2024-Data Collection & Completeness

- Implement predictability pilots
- Re-implement Maximo (90% phase 1 in 2024, phase 2 in 2025)
- Develop vertical asset life cycle program
- Develop a plan for horizontal assets
- Implement dashboard to support CIP



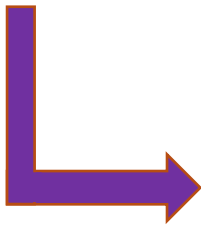
2026 – AM Program Build Out & Predictability

- Continue with horizontal assessments (pipes)
- Implement airside horizontal assets plan
- Develop landside horizontal assets plan (roads and bridges)
- Begin IOT implementation



2025 – Horizontal Assets Introduction

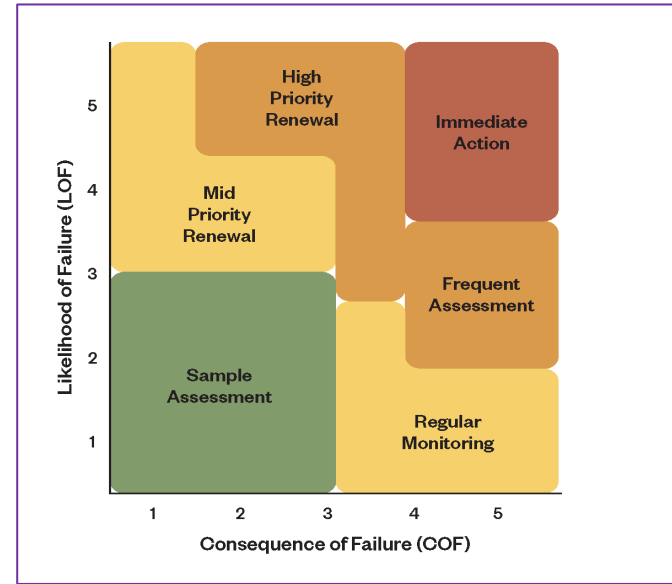
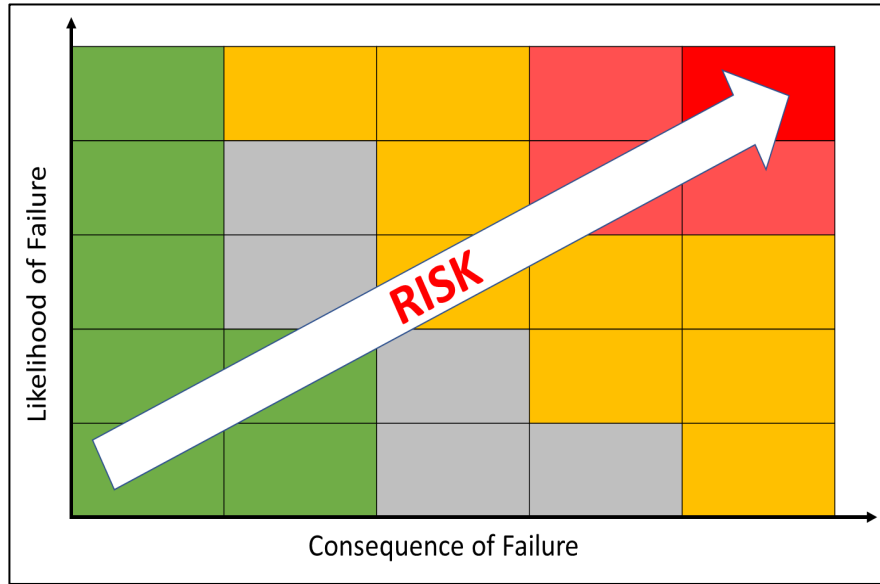
- Begin horizontal condition assessments (pipes)
- Integrate horizontal assets into Maximo and BIM
- Implement life cycle planning in horizontal assets
- Release Internet of Things (IOT) RFP
- Develop airside horizontal assets plan



2027 – AM Program Build Out

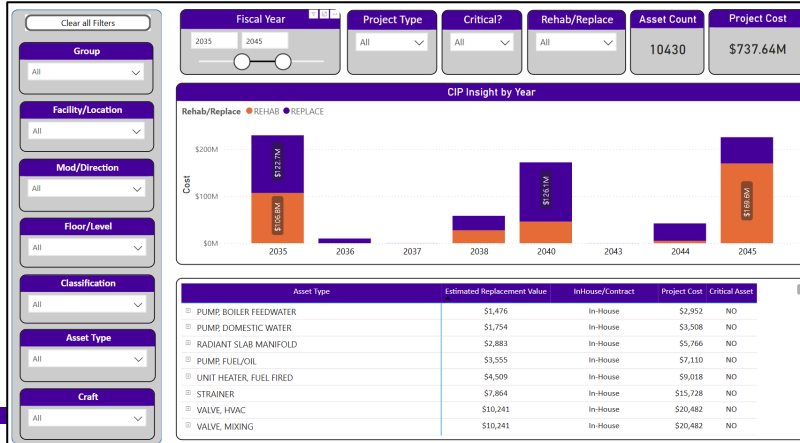
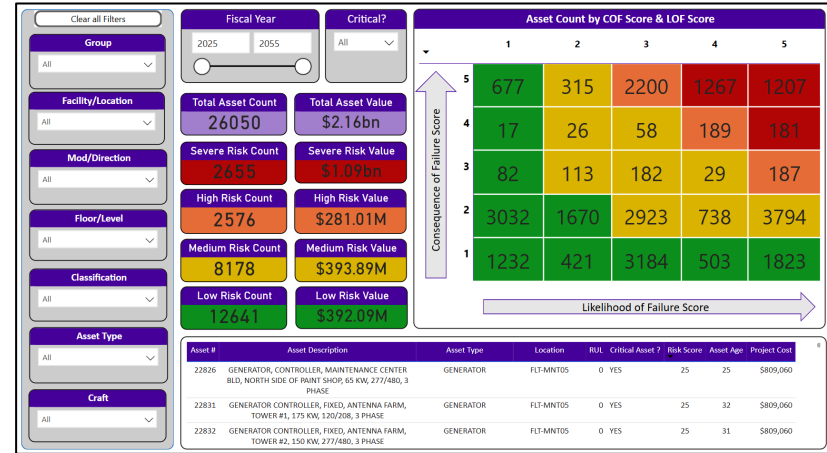
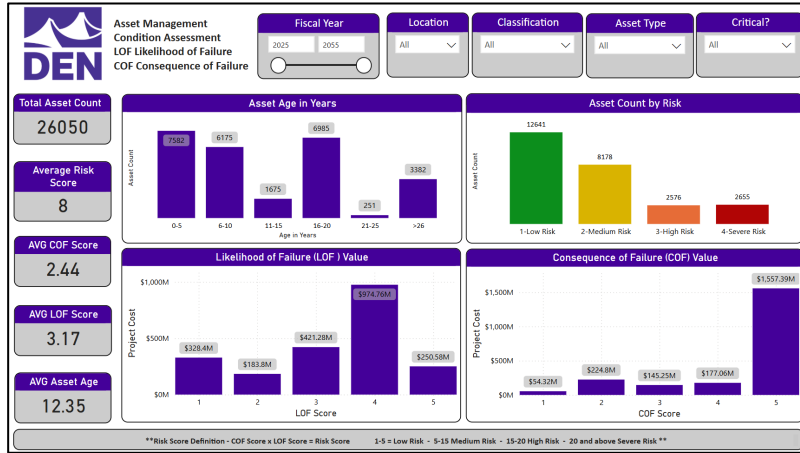
- Continue with horizontal assessments (pipes)
- Implement landside road and bridge plan
- Validate current status of AM program
- Continue building life cycle capabilities

COF & LOF SET RISKS AND PROJECT PRIORITIZATION



- **Likelihood of Failure (LOF) Definition:** the likelihood of or timing to an asset's failure
- **Consequence of Failure (COF) Definition:** the expected system-wide significance associated with the failure of an asset
- Knowing the risk helps plan maintenance strategies as well

USING THE INFORMATION - AM DASHBOARD



Live Demonstration of the Asset Management Dashboard

THANK YOU!

ANY QUESTIONS?