



**DENVER**  
THE MILE HIGH CITY

# Denver Parks & Recreation

Proposed Park Designations  
2<sup>nd</sup> Round

FOR CITY SERVICES VISIT | CALL  
**DenverGov.org** | **311**



# Park System History

- Park System had its origin in 1858 with the cities of Auraria, Denver City and Highland at the confluence of the South Platte River and Cherry Creek
- First park was Curtis Park in 1868
- First Park Board was created in 1893
- The Park Board directed the management and development of the park system until about 1904
- Under Mayor Speer, a charter amendment in 1904 was adopted that created the Department of “Improvements and Parks”
- In 1910 the Mountain Park System was established
- In 1956 the Department of Parks and Recreation was created.
- Parcels that were acquired, developed or treated as a park at this time (1956) became designated under this charter amendment
- Subsequent park designations are accomplished through the City Council ordinance process



# Designation Considerations

- Supports a master plan (City Park)
- Has historical, cultural, ecological, or educational significance (Civic Center, Cheesman)
- Preservation of key visual corridors or scenic vistas (Cramner)
- Park facilities have been or are planned to be constructed (13<sup>th</sup> & Xenia, Cuatro Vientos)
- Area infrastructure / utilities are not in a state of flux that may impact or change the park (Hampden Heights Park)
- There are no title / ownership issues that cast a cloud on the City's title or right to possession of the park
- No pending or anticipated plans for making/expanding non-park uses within the park. (Northside, Heron Pond, 52<sup>nd</sup> & Emerson)

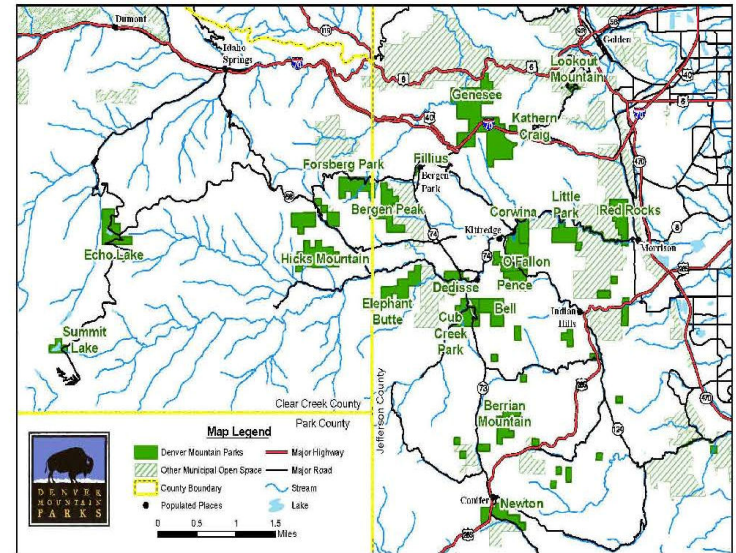
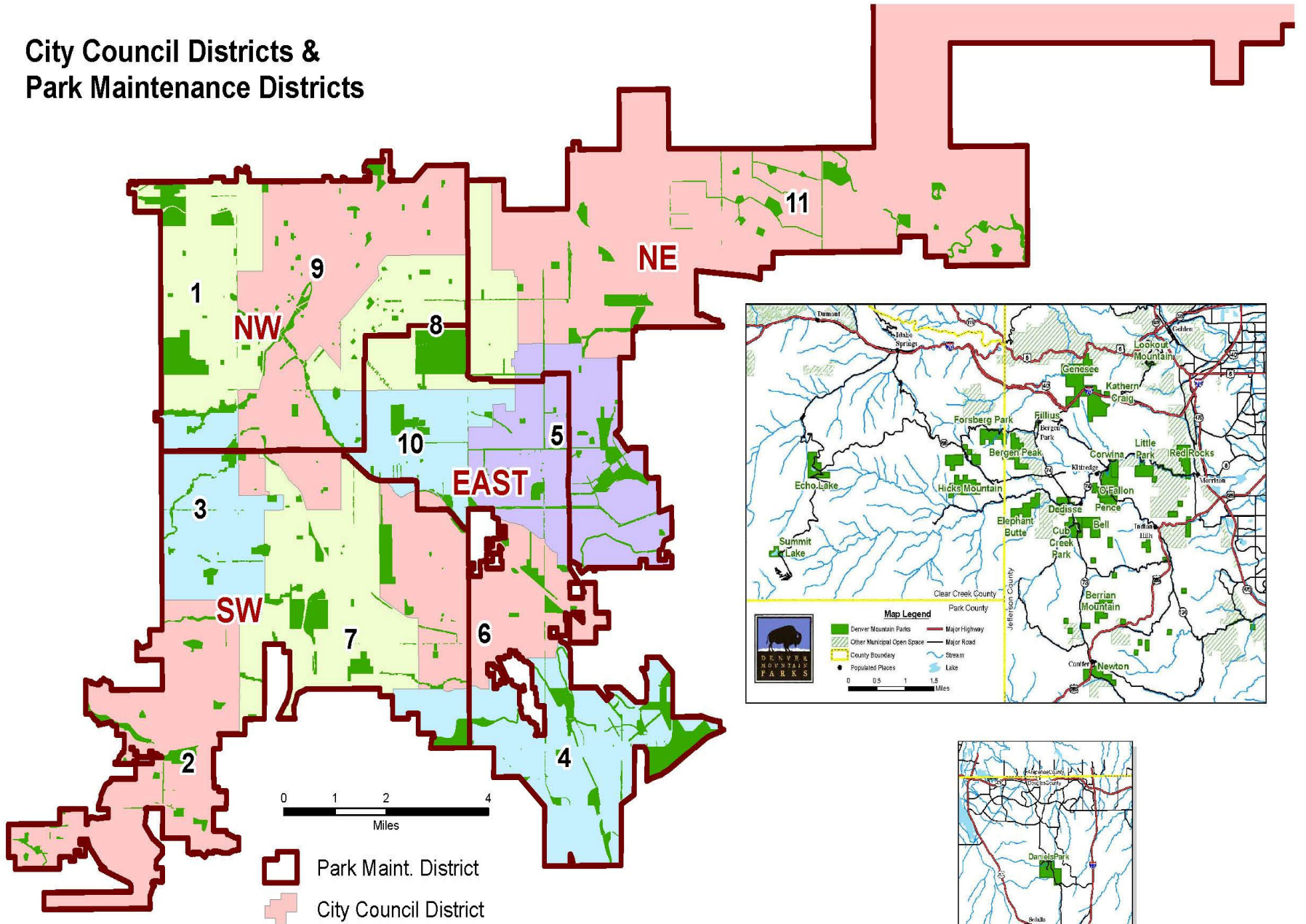


# Park Acres in January 2013

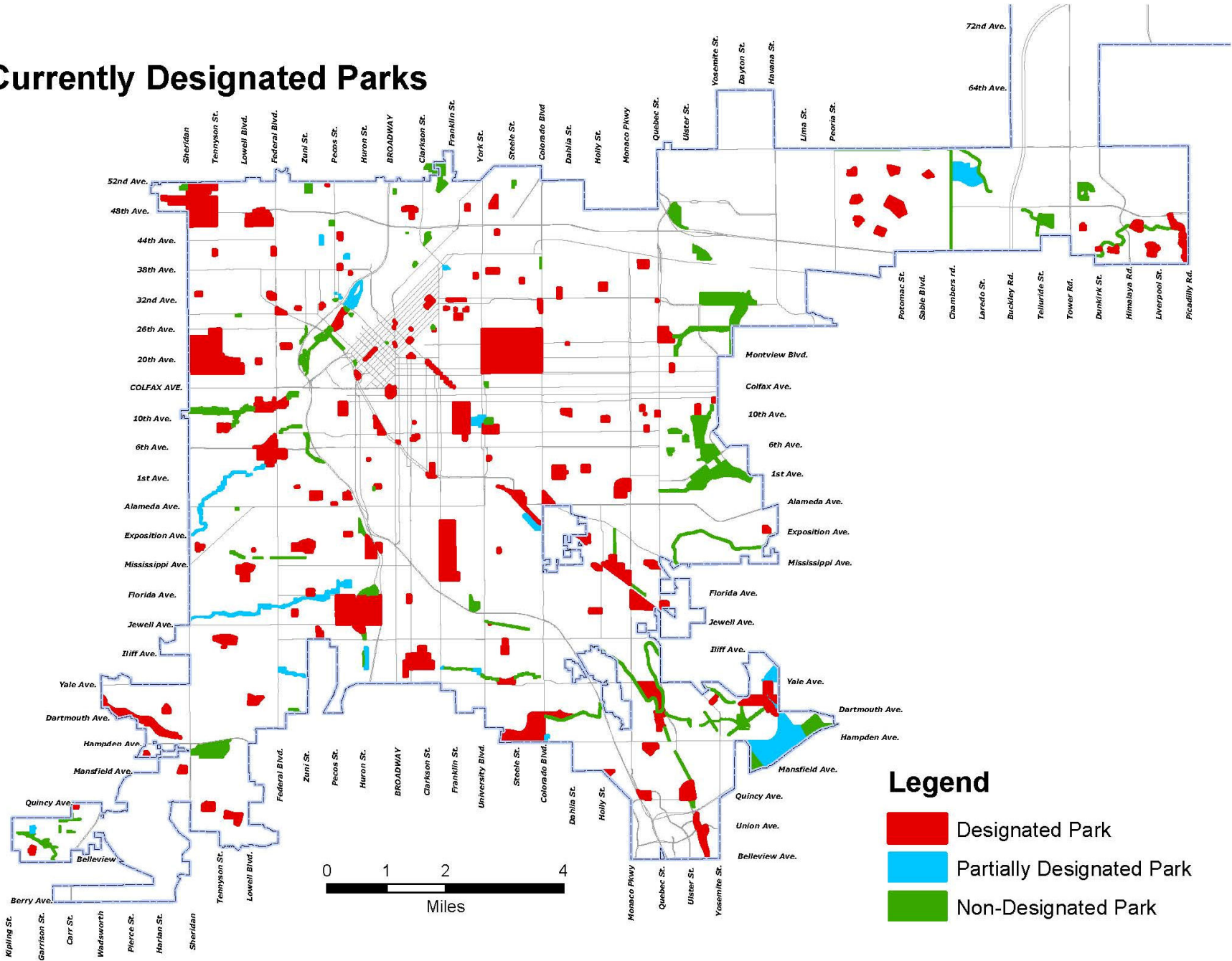
Council District	Acres*	2010 Population	Acres per 1000 Residents
1	681	45,723	15
2	346	54,682	6
3	221	50,157	4
4	964	52,998	18
5	515	56,648	9
6	488	49,907	10
7	589	52,341	11
8	550	54,163	10
9	429	51,288	8
10	230	49,013	5
11	876	83,238	11
Citywide	5,889	600,158	10
Mountain Parks	14,200	600,158	24
DPR System	20,089	600,158	33

\* Includes all classifications: Park, Golf, Open Space, Trails, Parkways, Medians, and Natural Areas

# City Council Districts & Park Maintenance Districts



# Currently Designated Parks



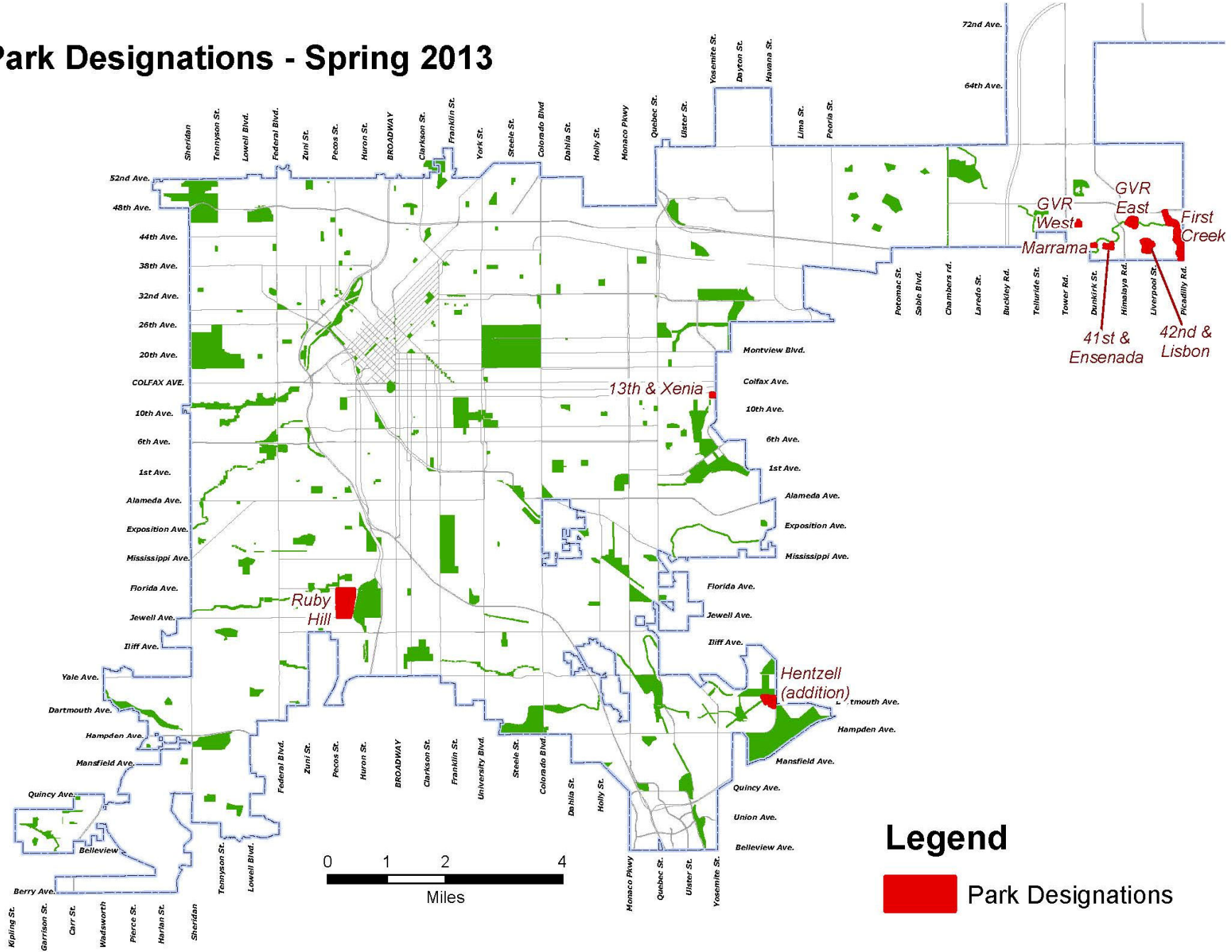


# Designations – Spring 2013

LOCATION NAME	PARK TYPE	GIS ACRES	MAINT DIST	COUNCIL DIST
First Creek	Open Space	37.1	NE	11
Green Valley Ranch East Park	Community	13.4	NE	11
Green Valley Ranch West Park	Neighborhood	3.5	NE	11
Marrama Park	Pocket	1.5	NE	11
Unnamed 41st & Ensenada Park	Neighborhood	5.1	NE	11
Unnamed 42nd & Lisbon Park	Neighborhood	18.0	NE	11
13th & Xenia Park	Neighborhood	2.1	E	5
Ruby Hill Park	Regional	81.9	SW	7
Hentzell (addition)	Open Space	15.9	E	4

<b>Total Acres:</b>	<b>178.5</b>
---------------------	--------------

# Park Designations - Spring 2013





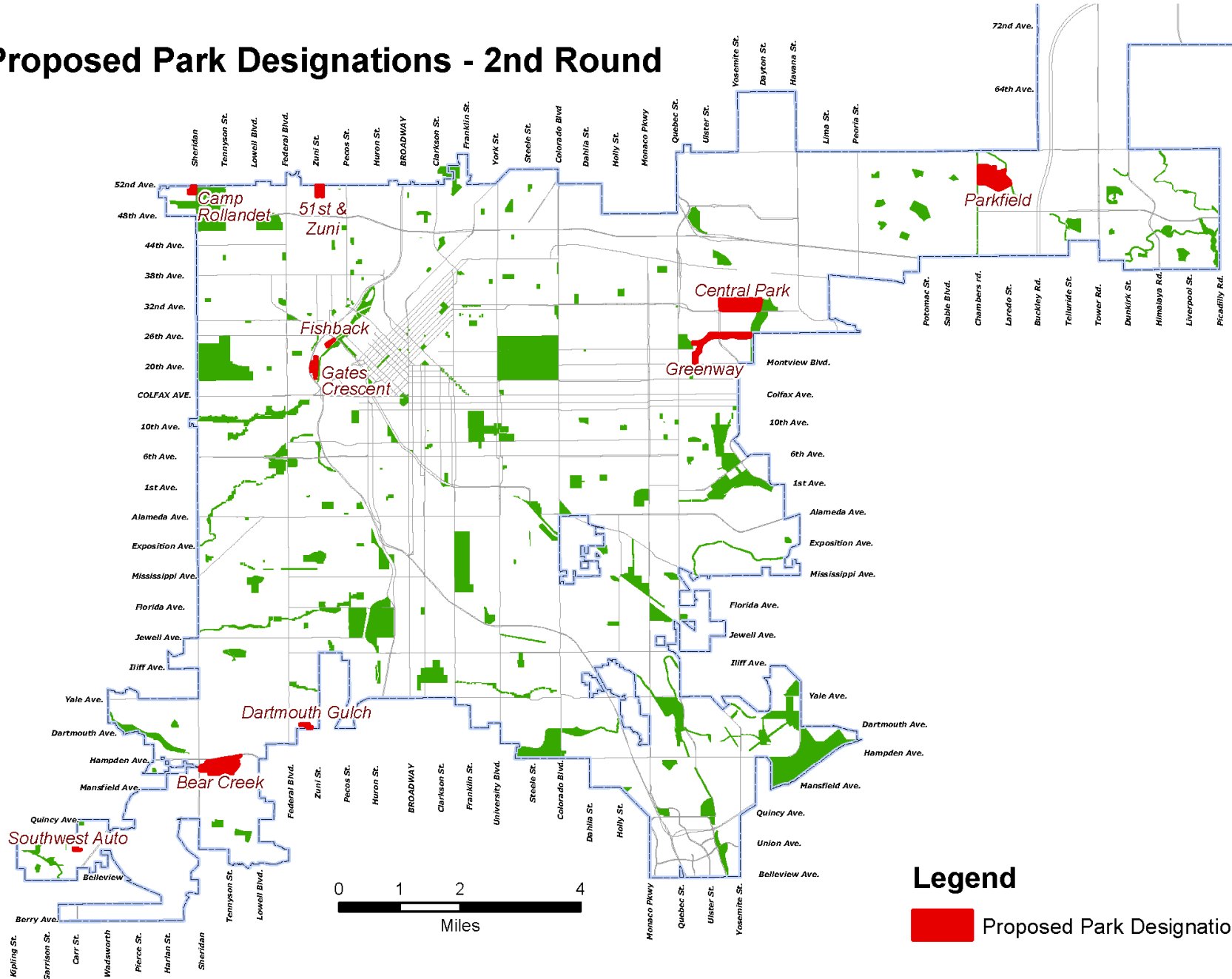


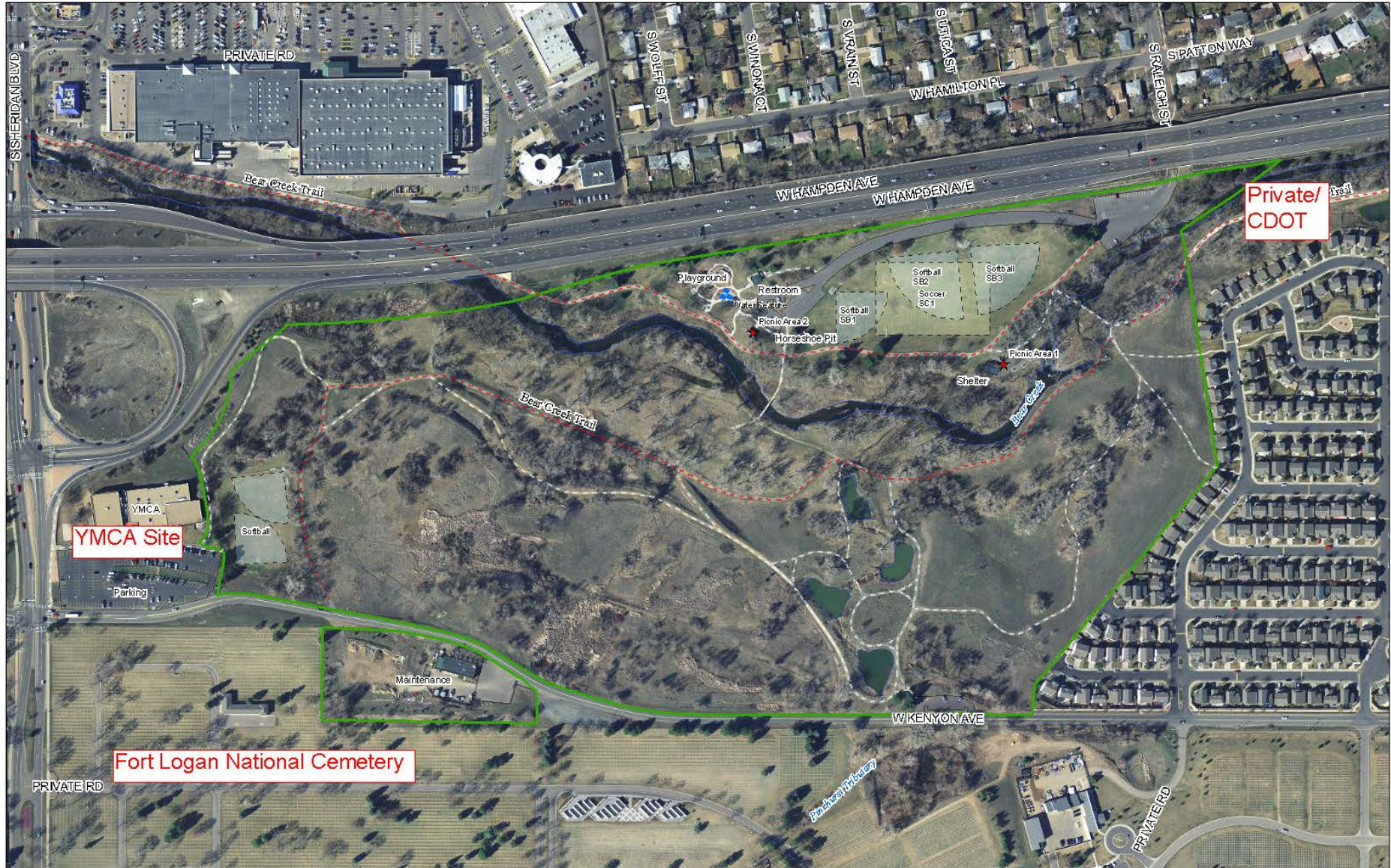
# Proposed Designations – 2<sup>nd</sup> Round

LOCATION NAME	PARK TYPE	GIS ACRES	MAINT DIST	COUNCIL DIST
Bear Creek Park	Regional	79.0	SW	2
Dartmouth Gulch Park	Open Space	3.3	SW	7
Fishback Park	Neighborhood	2.2	NW	1
Southwest Auto Park	Pocket	1.5	SW	2
Unnamed 51st & Zuni Park	Neighborhood	12.8	NW	9
Central Park	Regional	78.9	NE	11
Greenway Park	Community	40.3	NE	11
Parkfield	Regional	38.3	NE	11
Gates Crescent Park	Neighborhood	10.7	NW	1
Camp Rollandet	Open Space	7.0	NW	1

<b>Total Acres:</b>	<b>274.0</b>
---------------------	--------------

# Proposed Park Designations - 2nd Round





**Bear Creek Park**

Aerial Series - March 2013

Aerial Imagery - 2012

1 inch = 250 feet at 11x17

100  
Map Scale In Feet





# Dartmouth Gulch Park

Aerial Series - March 2013

Aerial Imagery - 2012

1 inch = 80 feet at 11x17

100

Map Scale In Feet





**Fishback Park**

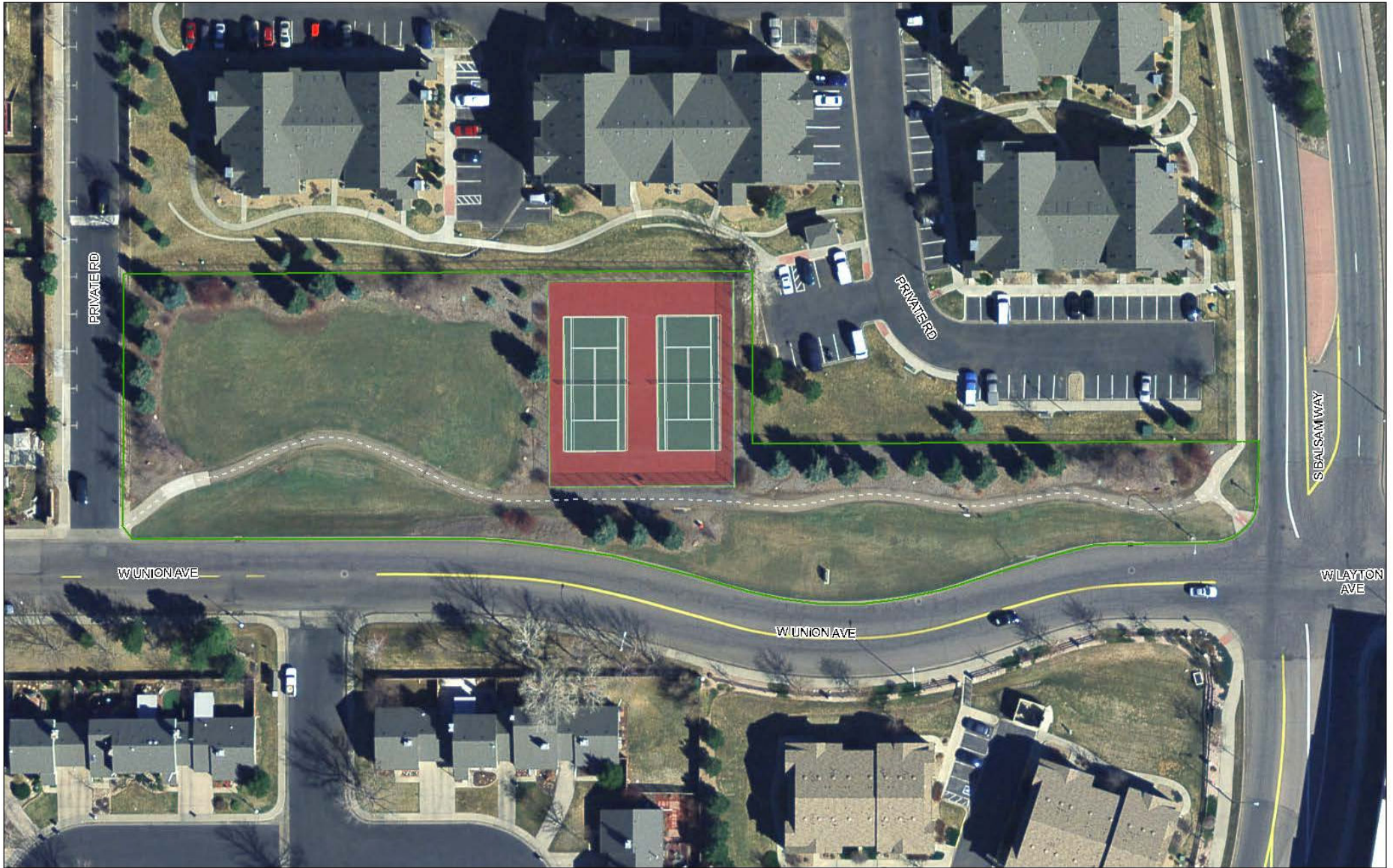
Aerial Series - March 2013

Aerial Imagery - 2012

1 inch = 100 feet at 11x17

100  
Map Scale In Feet





**Southwest Auto Park**

Aerial Series - March 2013

Aerial Imagery - 2012

1 inch = 50 feet at 11x17

100  
Map Scale In Feet





### Unnamed 51st & Zuni Park

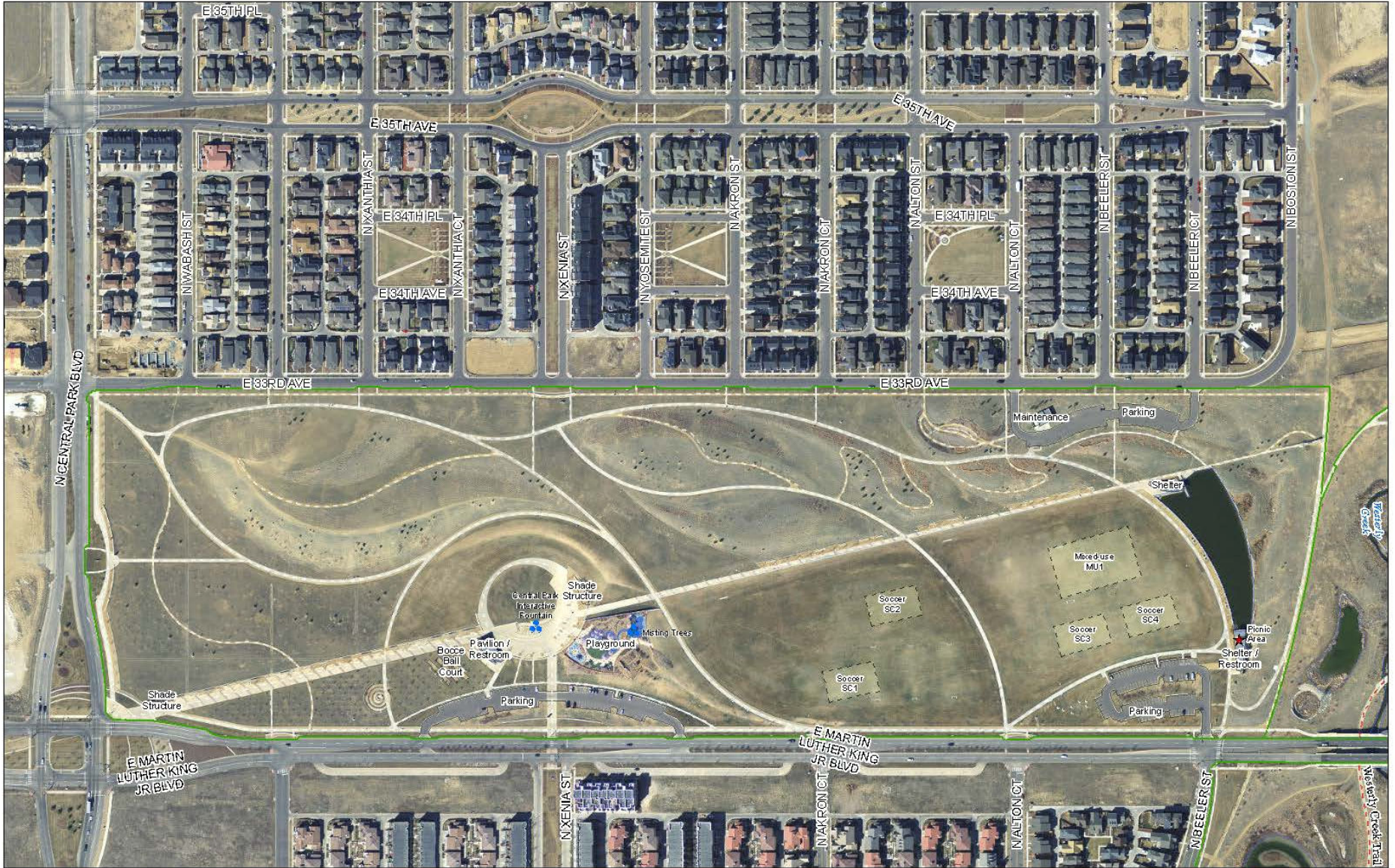
Aerial Series - March 2013

Aerial Imagery - 2012

1 inch = 100 feet at 11x17

100  
Map Scale In Feet





# Central Park

Aerial Series - March 2013

Aerial Imagery - 2012

1 inch = 250 feet at 11x17

100  
Map Scale In Feet









**Parkfield**

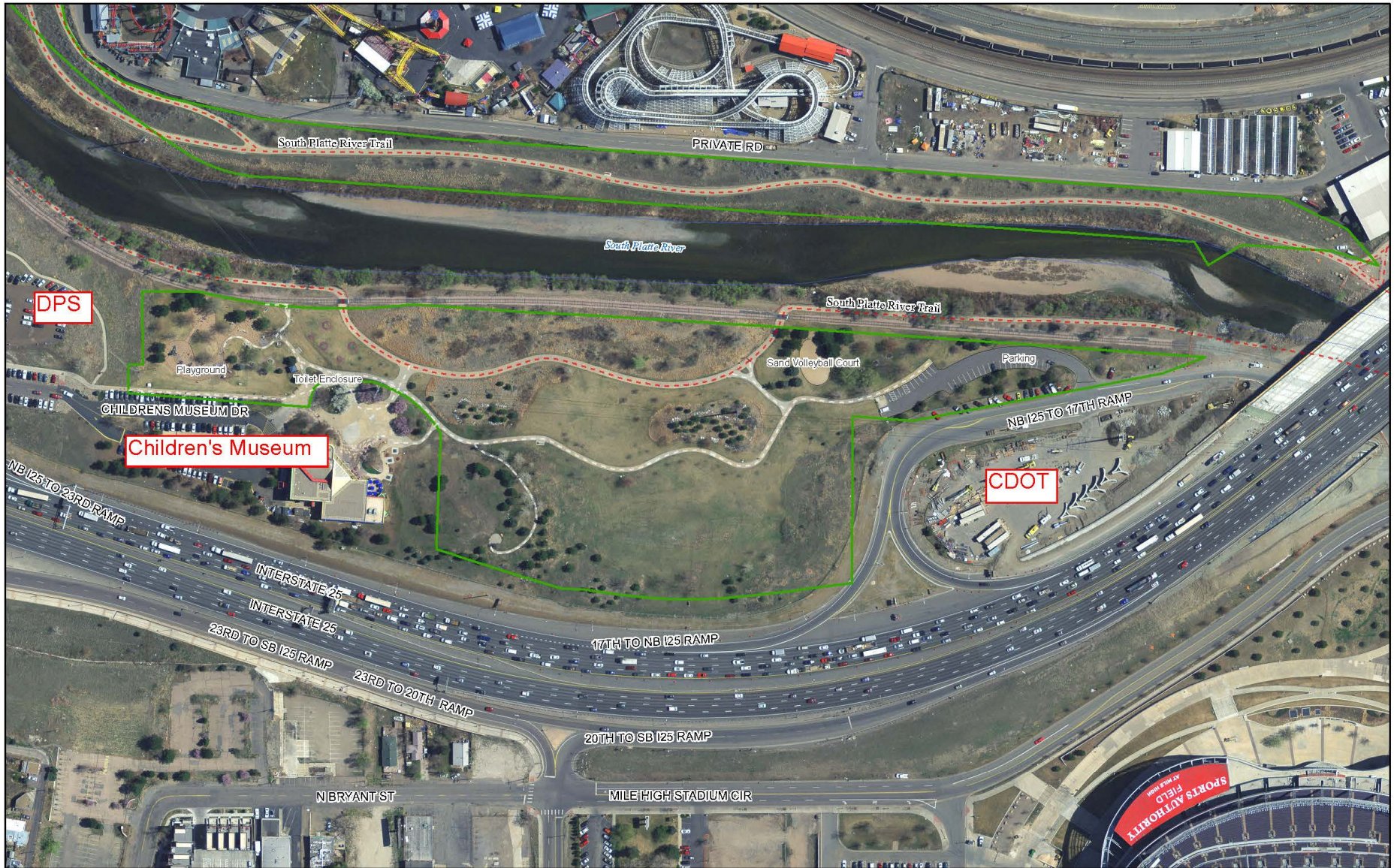
Aerial Series - March 2013

Aerial Imagery - 2012

1 Inch = 250 feet at 11x17

100  
Map Scale In Feet





# Gates Crescent Park

Aerial Series - March 2013

Aerial Imagery - 2012

1 inch = 150 feet at 11x17

100  
Map Scale In Feet





### Camp Rollendet

Aerial Series - March 2013

Aerial Imagery - 2012

1 inch = 100 feet at 11x17

100  
Map Scale In Feet





# Park Designation Status

- Beginning of 2013
  - 68% of Parks were already designated
- 1<sup>st</sup> Round - Spring 2013
  - Approx. 180 acres became designated
  - 72% of system designated as parkland
- 2<sup>nd</sup> Round
  - Approx. 275 acres to become designated
  - 79% of system will be designated as parkland
- 3<sup>rd</sup> Round
  - Approx. 180 acres to become designated
  - 82% of system will be designated as parkland



# Proposed Designations – 3<sup>rd</sup> Round

LOCATION NAME	PARK TYPE	GIS ACRES	MAINT DIST	COUNCIL DIST
Bayaud Park	Neighborhood	7.0	NE	5
Jackie Robinson Fields	Athletic Complex	19.6	NE	5
Lowry Sports Complex	Athletic Complex	47.1	NE	5
City of Ulaanbaatar Park	Neighborhood	5.1	NE	5
Crescent Park	Neighborhood	7.2	NE	5
Cuatro Vientos/Four Winds Park	Neighborhood	1.2	SW	3
Lakewood Gulch Park	Community	52.1	NW	1&3
51st & Broadway Park	Pocket	1.3	NW	9
Swansea Neighborhood Park	Neighborhood	3.3	NW	9
Hampden Heights Park **	Community	22.5	E	4
Veterans Park **	Community	11.8	SW	6
City Park Golf Addition *	Community	0.5	E	8
Denison Park Addition *	Neighborhood	0.4	E	5

\* Designation of additional parcel to complete Park Designation for the Park site.

\*\* Partial designation of Park site.

<b>Total Acres:</b>	<b>179</b>
---------------------	------------