

Program Update

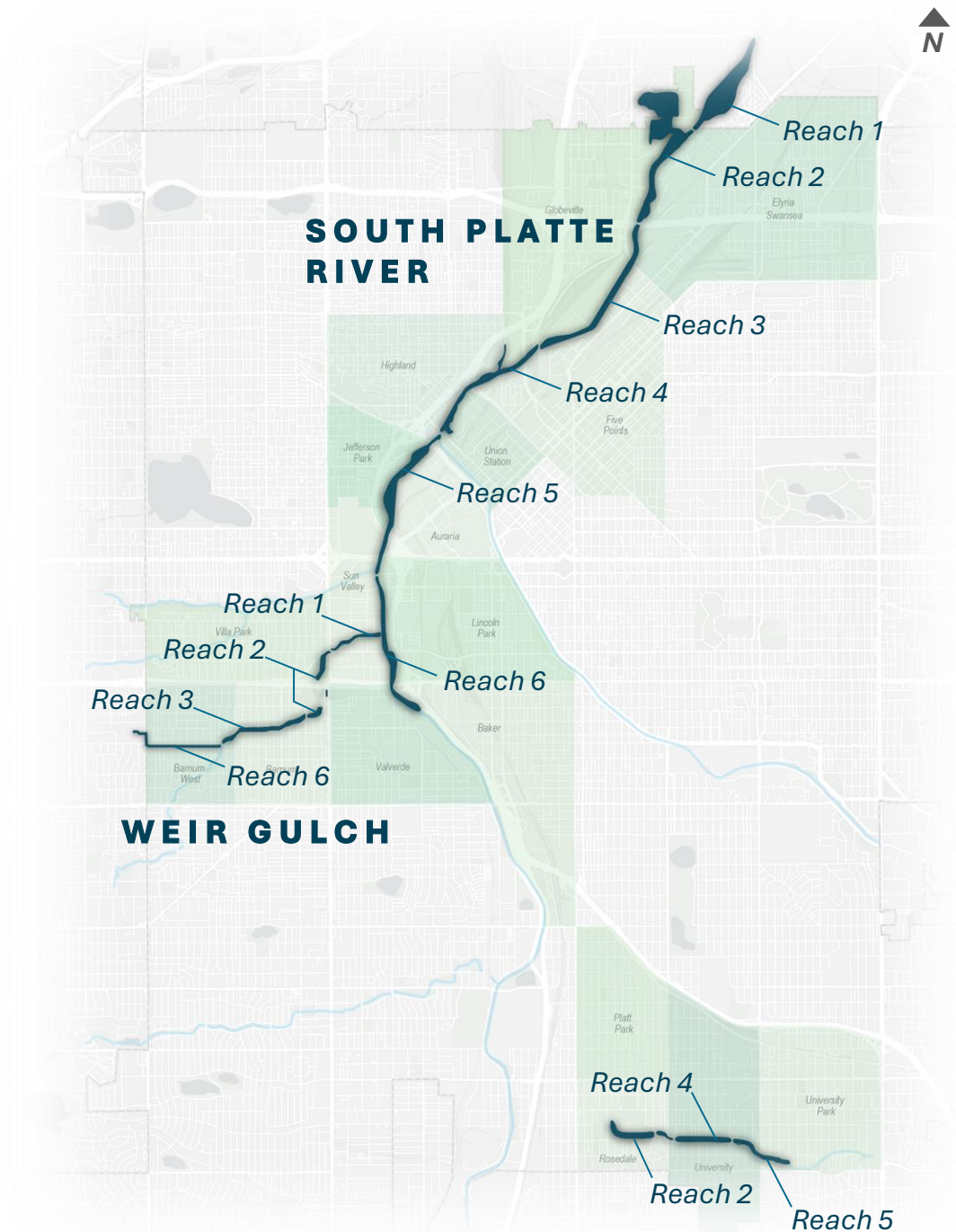
South Platte River Committee

October 08, 2025



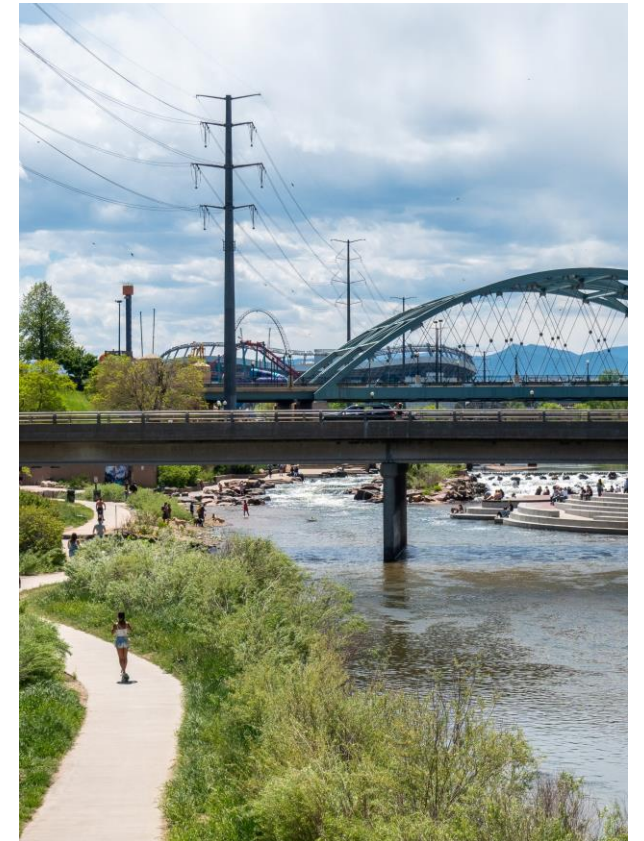
WATERWAY
RESILIENCY
PROGRAM

WEIR GULCH • SOUTH PLATTE • HARVARD GULCH



Agenda

- Program update
 - Program Timeline
 - Risk management: Request to amend agreement
- Project Update
 - Weir Gulch Segment 1 Construction
 - Weir Gulch Segment 2, 3, & 4 Design
 - Outreach





Program Updates

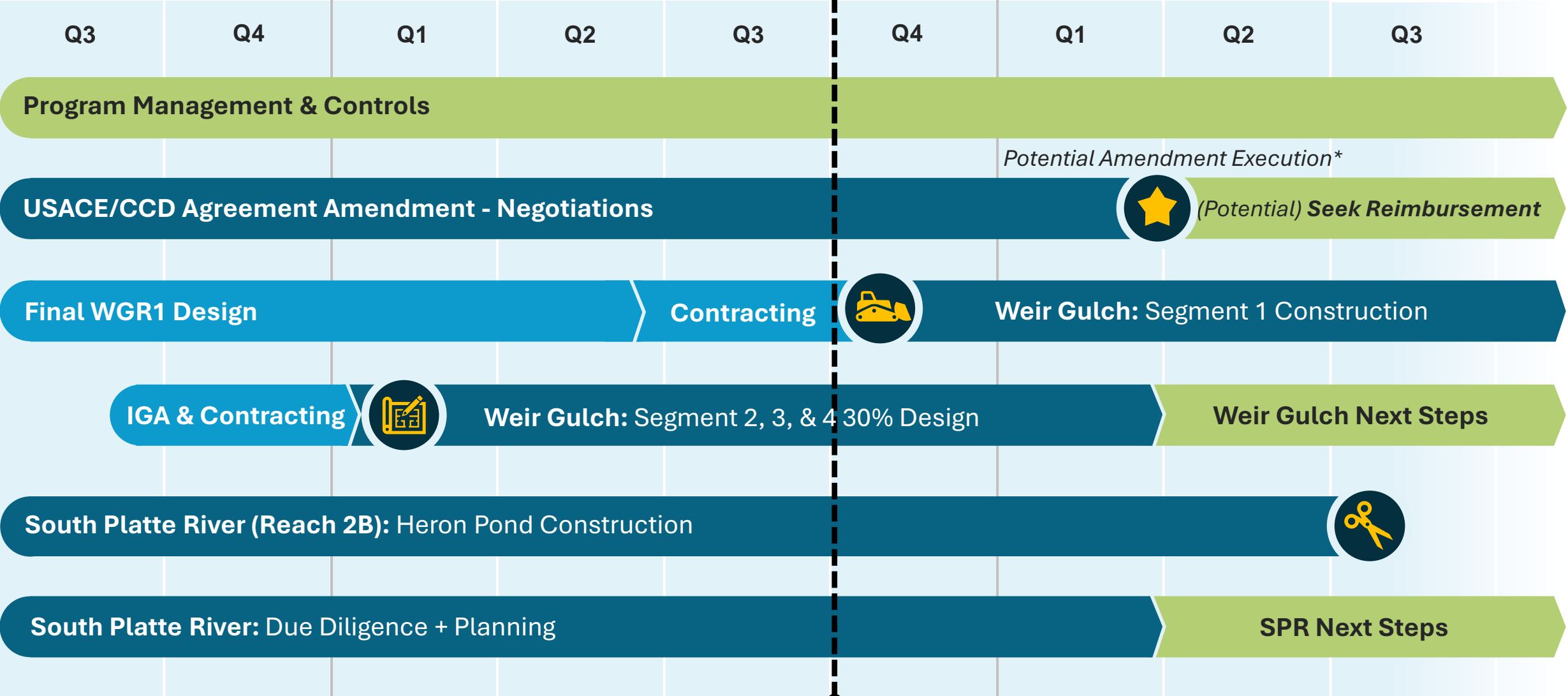
Project Schedule

CY 2024

CY 2025

We are here!

CY 2026



**Amendment execution dependent on successful negotiations, support from ASA-CW, and Denver City Council Action*

EXECUTED AGREEMENT: MAY 8, 2023



1ST OF ITS KIND

- CCD leads project delivery
- Cost-shared for “project costs”
- Federal (BIL) reimbursement can be sought as Denver completes discrete segments



Significant risk transfer to Denver

- Lack of design maturity = lack of cost certainty
- Unclear obligations and unclear applicability of remedies available to USACE if CCD fails to meet obligations

Revolutionize USACE Civil Works aims to modernize traditional delivery of the USACE Civil Works program:

- **Optimize local participation** and provide Non-Federal Sponsor (Denver) more control
- **Accelerate delivery**
- **Provide life-cycle cost savings** for Federal government and local sponsor

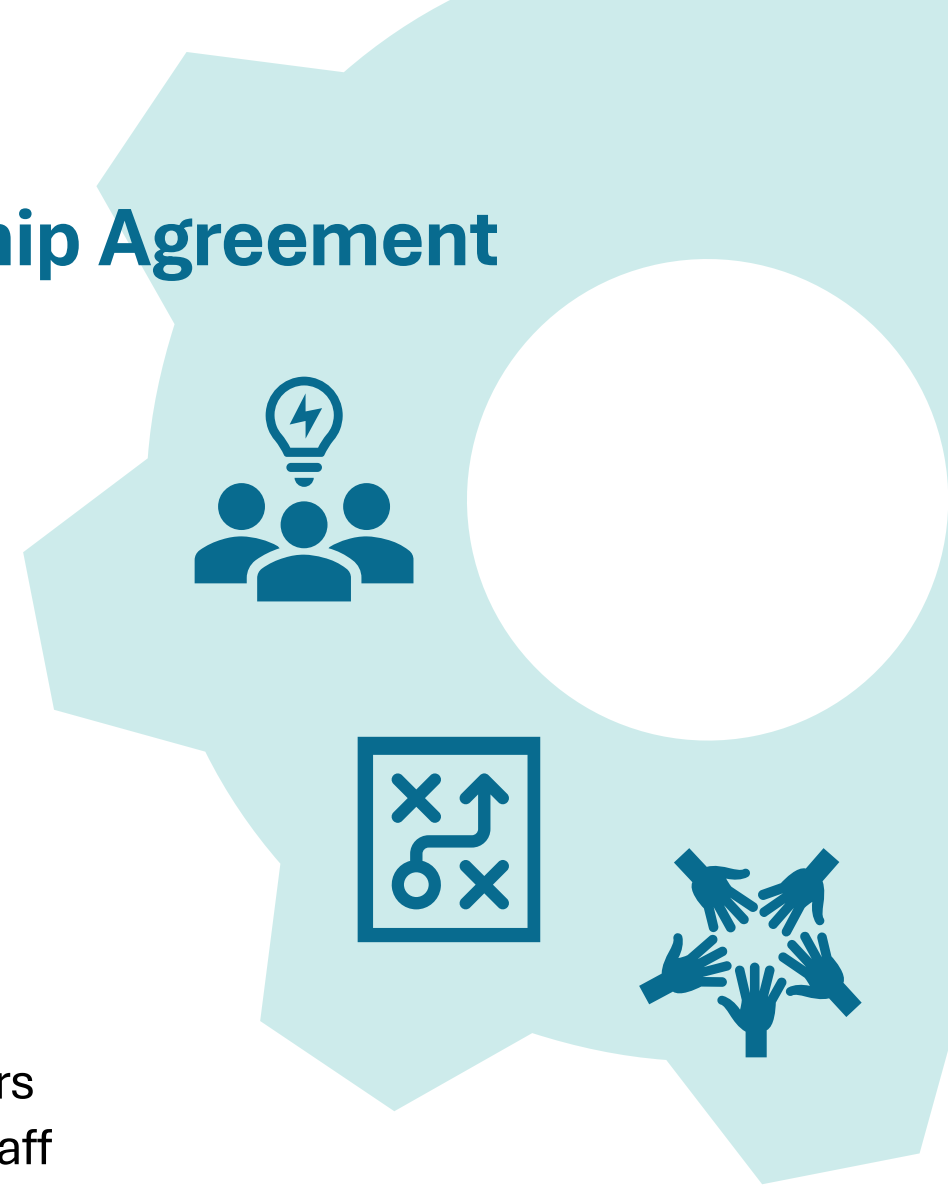
Risk Management: Request to Amend USACE/CCD Partnership Agreement

Strategy: Request technical changes to agreement and supporting documents to make risk manageable

- Federal authorization needed: Assistant Secretary of the Army – Civil Works
 - Does not require Congressional approval

Request Development:

- ✓ Comprehensive: Ten months of development
- ✓ Collaborative:
 - Worked closely with USACE District, Division and Headquarters
 - CCD team consisted of DOTI, DOF and CAO leadership and staff



	Current	Proposed
South Platte:	1	9
Weir Gulch:	1	4
Harvard:	1	1
TOTAL:	3	14

South Platte River: Recommended Separable Elements

The map illustrates the South Platte River and its surrounding areas, divided into seven reaches for planning purposes. The reaches are labeled as follows:

- REACH 1**: Located at the top left, showing the river flowing through a green area.
- REACH 2A**: Located below Reach 1, showing the river flowing through a green area.
- REACH 2B**: Located below Reach 2A, showing the river flowing through a green area.
- REACH 3**: Located in the center, showing the river flowing through a green area.
- REACH 4**: Located to the right of Reach 3, showing the river flowing through a green area.
- REACH 5**: Located to the right of Reach 4, showing the river flowing through a green area.
- REACH 6A**: Located at the bottom right, showing the river flowing through a green area.
- REACH 6B**: Located above Reach 6A, showing the river flowing through a green area.
- REACH 6C**: Located at the top right, showing the river flowing through a green area.

Key landmarks and parks shown on the map include:

- Riverside Cemetery
- Carole Sandhollow Park
- Benneville Landing Park
- City of Guernsey Park
- Commons Park
- Otisland Park
- Paul Mills Park

A north arrow is located in the bottom right corner of the map.



Request:

- ✓ Clarify that obligations and remedies occur at the separable element level (not entire scope)
- ✓ Redefine separable elements from 3 to 14
- ✓ Clarify CCD's financial commitment is match* to Federally appropriated \$350M, anything beyond would require action by both parties
- ✓ Acknowledge that CCD and USACE will work together to manage scope and budget which may involve future studies and/or Congressional action

**CCD's match consists of shared project costs plus environmental remediation and other potential costs; CCD's match will be better understood as design is advanced*

Benefits:

- ★ Significantly reduce CCD's risk exposure, making it more manageable
- ★ Enable CCD to initiate concept design on South Platte River which will drive towards better understanding of costs
- ★ Allow for flexibility in project planning and implementation sequencing
- ★ Allow CCD to develop plan(s) of finance at a smaller scale



Next Steps for Request

Status: CCD submitted request to USACE on Friday, September 26, 2025

- Submitted before end of Federal Fiscal Year (09/30) to demonstrate continued commitment to deliver project (have yet to seek Federal reimbursement on appropriated funds)

Next Steps:

- Negotiations
- If negotiations successful, bring through CCD's legislative process for action
- If amendment execution successful:
 - Identify path to drive towards cost certainty on SPR (already advancing Weir Gulch)
 - Able to develop financial plans for smaller portions of the program (potentially separable element by separable element)
 - Begin seeking reimbursement for separable elements that have full plan of finance (risk is mitigated)
 - Initially: Weir Gulch Segment 1



Project Update: Weir Gulch Segment 1

Weir Gulch Segment 1: Construction



Design

- ✓ 100% Design documents completed
- ✓ CLOMR (FEMA) approved
- ✓ USACE approved design for construction

Outreach:

- ✓ Pre-construction meeting held October 1, 2025

Construction

- Contract award expected mid-October
- **Construction anticipated to start October 20, 2025**

Anticipated Construction Schedule

	2025	2026
Construction	Mid-October 2025 to Summer 2026	
Decatur Street & 9th Avenue Closure	Late October/Early November 2025 to May/June 2026	
Weir Gulch Trail Closure	Late October/Early November 2025 to June/July 2026	

Project Rendering



WEIR GULCH DECATUR CROSSING
DENVER, CO

Stay Connected!

Information Line and Email

- 720-459-4695
- weirconstruction@denvergov.org

Join the mailing list!

Scan the QR Code or fill out our sign-up sheet!



Visit our website



Weir Gulch Segment 1: 6th Amendment



Purpose: Standard amendment to MHFD/CCD IGA that documents 2024 and 2025 already appropriated funding for project from both parties (since funding amounts were last documented)

- Ensure continued compliance with CCD/USACE Agreement
- Funds acknowledged in amendment:
 - MHFD: \$6M (2025 budget)
 - CCD: \$7.5M (from Wastewater Capital 2024 and 2025 budgets)
- Completes capital stack for construction of Weir Gulch R1

Status: In Jagger/contracting system and process

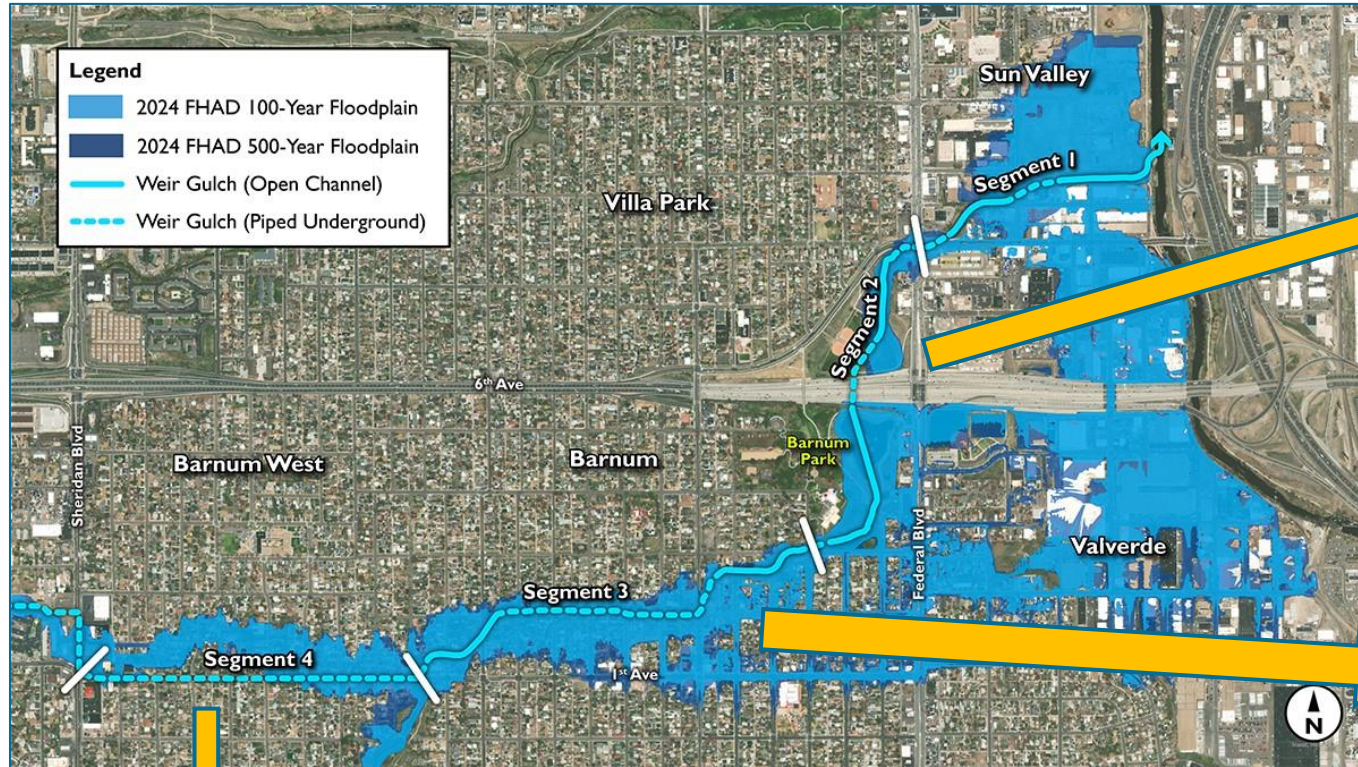
- Will likely see as an item in an upcoming mtg





Project Update: Weir Gulch Segments 2, 3, & 4

Weir Gulch Segments 2, 3, & 4: Existing Conditions & Considerations



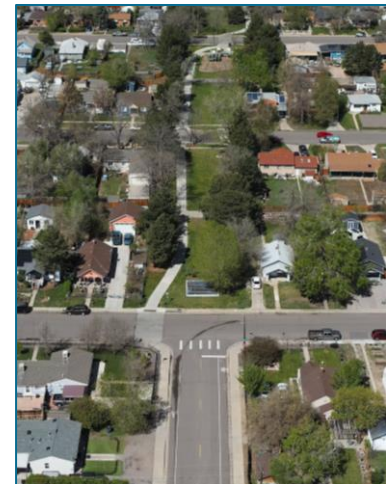
Segment 2: Federal Blvd to Hooker St.

- Recreational & public space character
- Mostly open channel
- Recreational amenities:
 - Barnum Rec Center
 - Barnum Lake
 - Barnum Dog Park
 - Barnum Softball Fields
 - Barnum Mountain Bike Park



Segment 3: Hooker St. to Raleigh St

- Residential character
- Mix of open channel & pipe
- Fragmented trail
- Amenities:
 - Newton Playground
 - Barnum community garden & orchard
 - Linear park space for soccer & play



Segment 4: Raleigh St. to Sheridan Blvd.

- Residential & commercial character
- Rolling hills
- Tributary is piped under 1st Ave
- Existing bike lanes & transit route on 1st Ave
- No public spaces along the street



Weir Gulch Segments 2, 3, & 4: Design Approach



MHFD Urban Stream Assessment Procedure

Hydraulics

How water flows through the stream, including speed, depth and direction.

Hydrology

Where the water comes from, how much water there is, and how it moves through the landscape.

Geomorphology

How the shape and features of the stream and land around it change over time.

Vegetation

The plants that grow along the stream that help support wildlife and prevent erosion.

Community Values

What matters most to the people who interact with Weir Gulch and the surrounding community.



Examples of Waterway Design Approaches

Street + Pipe Infrastructure / Infraestructura de calles y tuberías

Limited space for trees, habitat & ecological benefit.
Espacio limitado para árboles, hábitat y beneficios ecológicos.

No space for recreation/amenities.
No hay espacio para actividades recreativas/servicios.

All water diverted underground.
Limited future flood mitigation.
Todo el agua se desvía bajo tierra.
Mitigación limitada de futuras inundaciones.

Smallest dimension.
Dimensión más pequeña.



Park + Pipe Infrastructure / Infraestructura de parques y tuberías

Limited space for trees, habitat & ecological benefit.
Espacio limitado para árboles, hábitat y beneficios ecológicos.
(Trees cannot be planted over pipes).
(No se pueden plantar árboles sobre tuberías.)

Allows for recreation & amenities.
Permite espacio para actividades recreativas/servicios.

Trail crossings must be at-grade.
Los cruces de senderos deben estar a nivel del suelo.

All water diverted underground.
Limited future flood mitigation.
Todo el agua se desvía bajo tierra.
Mitigación limitada de futuras inundaciones.

Small dimension.
Dimensión pequeña.



Open Channel & Pipe Hybrid / Híbrido de canal abierto y tubería

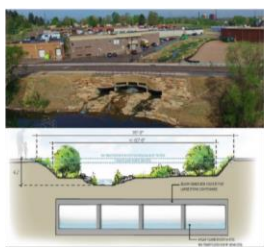
Limited space for trees (cannot be planted over pipes).
Espacio limitado para árboles (no se pueden plantar sobre tuberías).

Some habitat and ecological benefit.
Algunos beneficios ecológicos y para el hábitat.

Trail crossings must be at-grade.
Los cruces de senderos deben estar a nivel del suelo.

Open channel handles small storms.
Big storms are diverted underground.
El canal abierto gestiona tormentas pequeñas.
Las grandes tormentas se desvían bajo tierra.

Medium dimension.
Dimensión media.



Urban Open Channel / Canal abierto urbano

More space for trees.
Más espacio para los árboles.

More habitat and ecological benefit.
Más hábitat y beneficios ecológicos.

Can have grade-separated trail crossings (underpasses).
Puede tener cruces de senderos con separación de niveles (pasos subterráneos).

Open channel carries all stormwater.
Canal abierto para todas las aguas pluviales.

Narrower channel needs some hard edges (concrete/boulders).
Los canales más estrechos necesitan algunos bordes duros (hormigón/vacas).

Large dimension.
Dimensión grande.



Natural Open Channel / Canal abierto natural

Most space for trees.
El mayor espacio para los árboles.

Most habitat and ecological benefit.
Mayor beneficio ecológico y para el hábitat.

Can have grade-separated trail crossings (underpasses).
Puede tener cruces de senderos con separación de niveles (pasos subterráneos).

Open channel carries all stormwater.
Canal abierto para todas las aguas pluviales.

Wider channel can have softer, greener edges.
Un canal más ancho puede tener bordes más suaves y verdes.

Largest dimension.
Dimensión máxima.



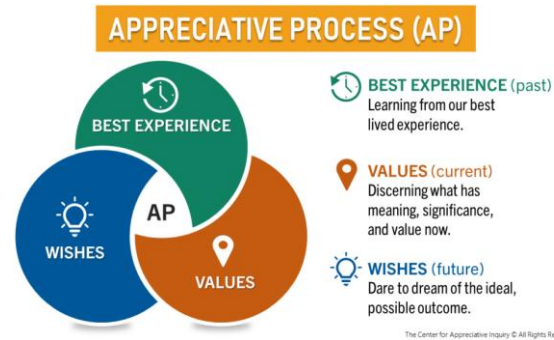


Weir Gulch Segment 2, 3, & 4: Public Engagement

“We cannot solve problems with the kind of thinking we employed when we came up with them.” – Albert Einstein

Partnered with the Engineering Change Lab to structure community engagement approach which has received **very positive feedback** from community.

- ✓ 3 Stakeholder Community Circles
- ✓ 2 public meeting
- ✓ Numerous Registered Neighborhood Organization (RNO) meetings, pop-ups and community events
- ✓ Flyers and yard signs
- ✓ Monthly briefings with District 3 City Council office



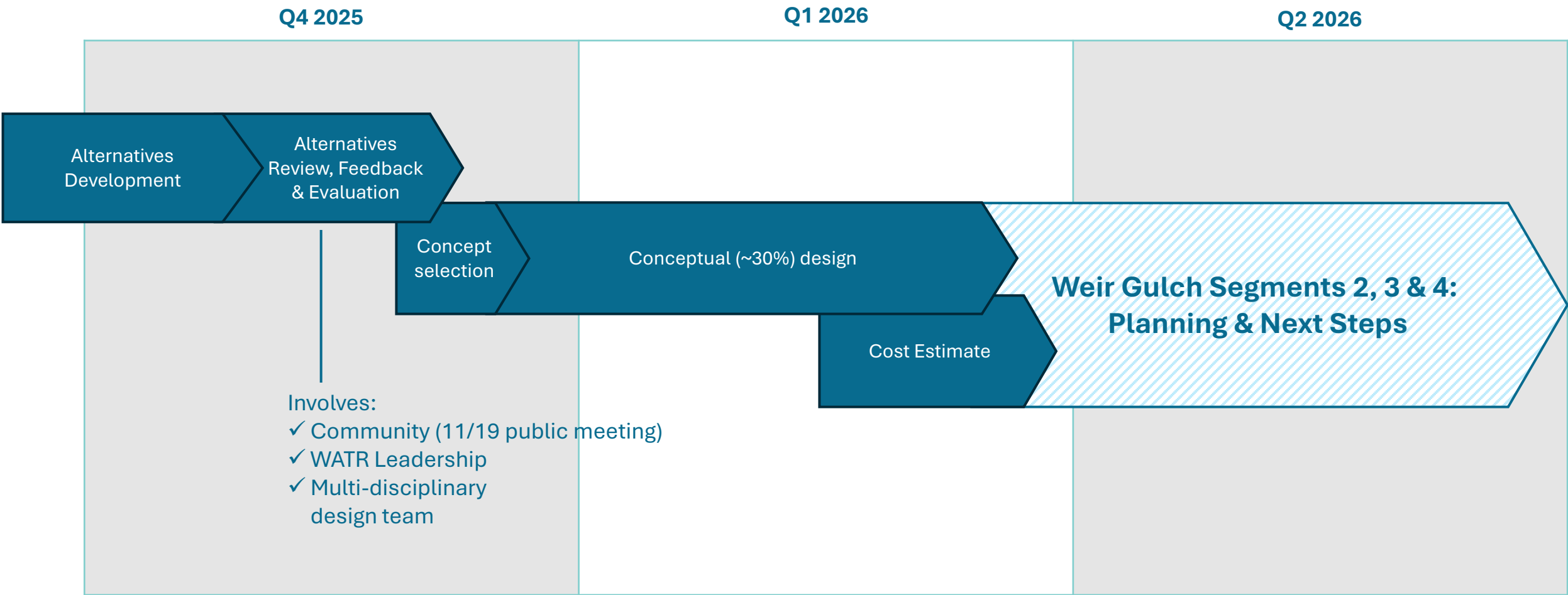
Key Themes and Values

- Address safety concerns and risks
- Community pride and stewardship
- Meaningful engagement and being heard
- Preservation and enhancement of nature & ecology
- Increase connectivity, access & visibility
- Addressing neighborhood places and gathering spaces
- **Uncertainty and displacement:** Desire for clarity on project impacts, property acquisitions, and timelines





Weir Gulch Segments 2, 3, & 4: Next Steps





Thank you!

waterwayresiliency@denvergov.org

[DENVERGOV.ORG/WATERWAYRESILIENCY](https://denvergov.org/waterwayresiliency)

