

Professional Services & Civil Construction On-Call Contracts

Transportation & Infrastructure Committee

11/19/2025



Agenda

- On-Call Purpose and Use
- On-Call Contract Administration
- Division of Small Business Opportunity (DSBO) Requirements
- Professional Services Category
 - RR25-1643 through RR25-1687
- General Civil Construction Category
 - RR25-1384 through RR25-1391
- 2026 Work Plan Projects



On-Call Contract Purpose and Use

- Establish and maintain a pool of qualified on-call consultants and contractors
- Expedite delivery of citywide capital projects, including Mayoral & City Council priorities and Vibrant Bond
- Support the local economy and provide jobs
- Enhance Denver's vibrancy for our community and visitors
- Accommodate seasonal construction needs
- Mitigate cost escalations between capital design and construction



Expanded Opportunities to Work with Denver

- Expand access for small, minority or women owned business partners
- Mini-bid selection process to select consultants for task orders
 - Leverage **pool of MWBE-certified subcontractors** for on-call vendors to utilize
 - Considerate of DSB0 progress on prior task orders
- Enhance **administrative efficiencies** for both the City and interested Contractors to propose and approve individual bids
 - DOTI has **300+ capital projects in design** and **100+ in construction**
 - **100+ contracted firms** providing planning, design, and construction services

On-Call Contract Procurement

- Single on-call procurement covering a wide range of horizontal and vertical capital needs such as:

PLAN, DESIGN AND BUILD

*Professional Services

Planning & Design:

- Roadways
- Bridges
- Stormwater
- Green Infrastructure
- Utilities
- Specialized communications, data, engineering, & architectural services

*Large Civil Construction

Construction:

- Transportation Infrastructure
- Bike & Pedestrian Infrastructure
- Bridges
- Traffic Signals
- Intersections & Crosswalks
- Utilities

City Facility Construction

Delivery of City Agency facilities:

- Planning
- Design
- Architecture
- Engineering
- Construction

City Agency partners:

- DPR, DPL, AVD, DOS, etc

OPERATE & MAINTAIN

Transportation Operations

Installation & maintenance:

- Sign Replacements
- Pavement Marking
- Directional Boring

* = today's actions

DENVERGOV.ORG



Project Delivery Methodology

- Project Managers complete a capital project **delivery matrix** and **workshop** to evaluate and identify the most appropriate delivery method for a specific project:
 - Project information
 - Project budget
 - Funding sources and requirements
 - Delivery timeline
 - Cost certainties
 - Risk assessment
- Capital delivery contracting tools available:
 - Design, Bid, Build (DBB) – ideal for **linear** planning, design, & construction phases
 - Design Build (DB) – alternative delivery ideal for **iterative** design & construction phases
 - Construction Manager/General Contractor (CMGC) – ideal for complex projects requiring closely **integrated** and **aligned** design and construction services
 - On-Calls – ideal for **dynamic**, multiphase, seasonal, **time-sensitive**, and/or emergency response work
- Recommended contracting method reviewed by DOTI procurement committee



Plan



Design



Build



Deliver



Operate



Maintain

Contractor Resources



www.denvergov.org/dobusinesswithdoti

- Information posted on *Do Business with DOTI*
- Ensures transparency and equity across interested firms
- Links to the existing on-call firms to encourage partnerships
- Identifies upcoming opportunities so new firms understand typical work scopes
- Outlines requirements and provides checklists for firms to prepare successful proposals
- Email sign up for firms to receive notifications of current and upcoming opportunities

Do Business with DOTI

Thank you for your interest in doing business with the [Department of Transportation & Infrastructure \(DOTI\)](#)!

DOTI strives to be Vibrant, Affordable, and Safe, and working with strong business partners is a key component of our success. Most construction and professional services contracts are awarded to companies through request for proposals or competitive bidding processes.

[Subscribe Here For Updates](#) >



[View Opportunities on BidNet](#)

[Business Development & Diversity](#)

[Get Prequalified For Construction Projects](#)

Bidding and Contracting Resources



Current Bidding Opportunities

Current bidding opportunities within the Department of Transportation and Infrastructure (DOTI).



Bid Results

Summaries and tabulations for past bids, shortlists and awards for RFP and RFQ contracts



Current Transportation & Infrastructure Projects

Find information about major studies, planning efforts, and construction projects currently underway in DOTI.



Future Construction Solicitations



Future Professional Services Solicitations

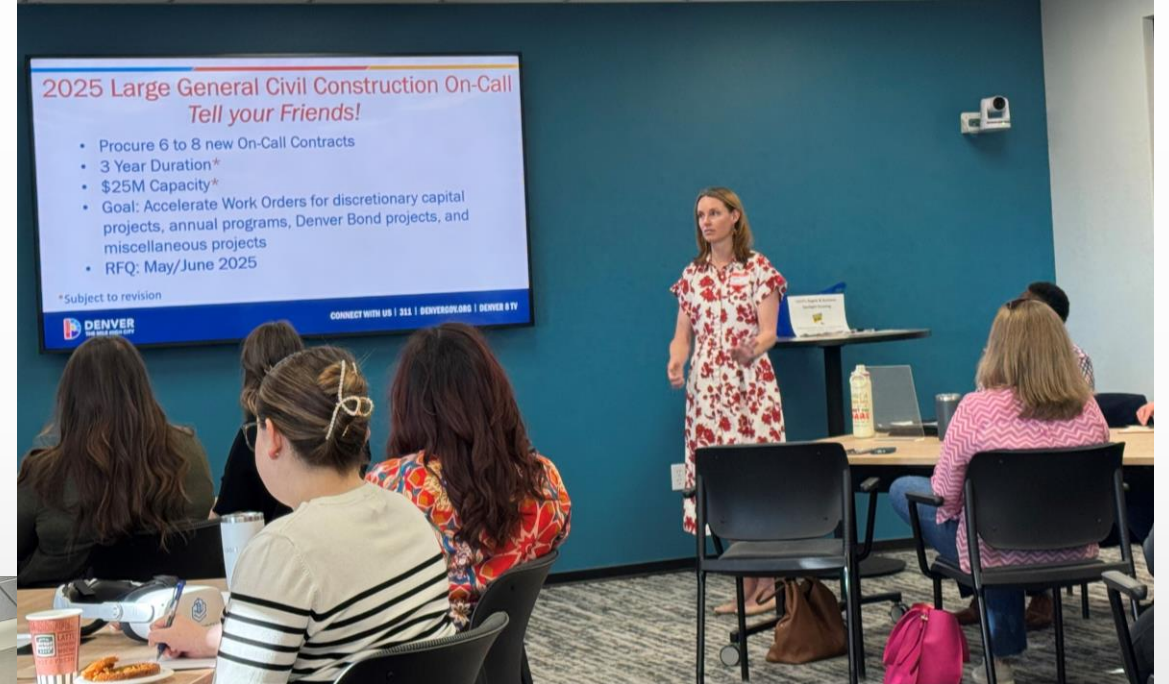


Future Opportunities for On-Call Contract Holders

Communication & Outreach



**Professional Services Category
On-Call Contracts Industry Event –
April 8th, 2025**



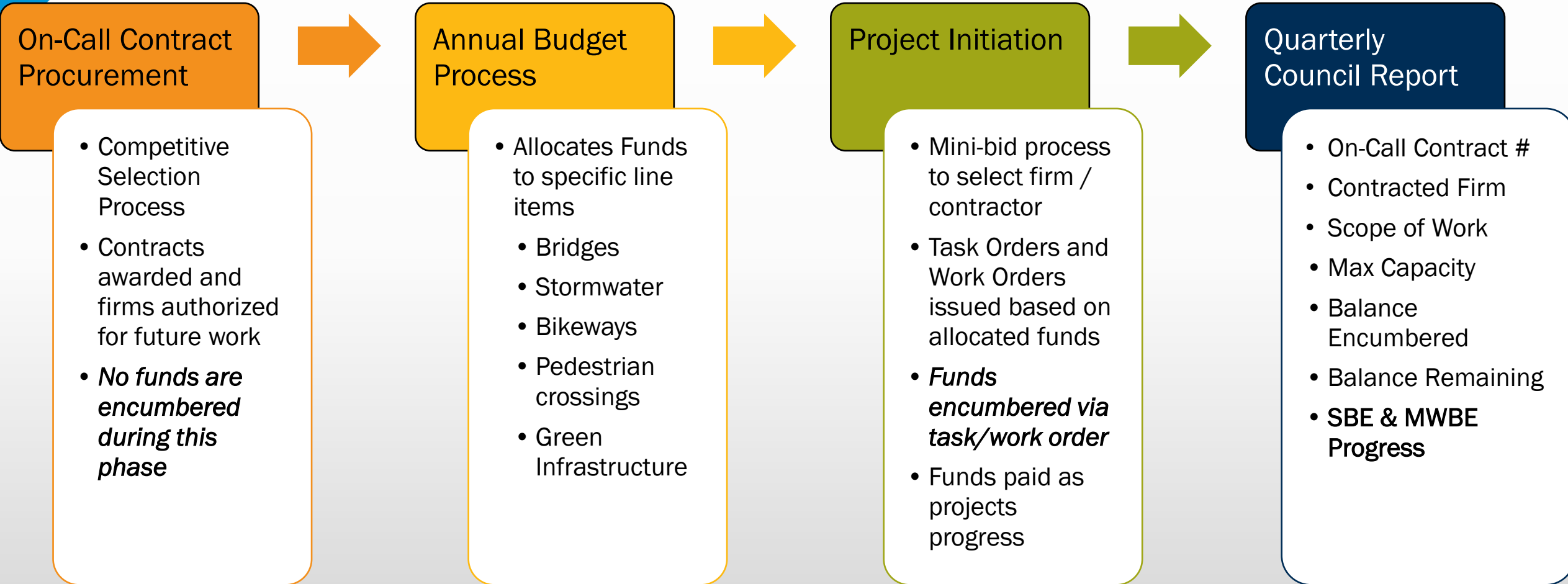
**Civil Construction Category On-Call
Contracts Event – April 11th, 2025**



On-Call Contract Administration



On-Call Contract Administration



Project Example

Tennessee & Oneida, Phase II

MAYOR'S 2024 BUDGET

City and County of Denver

PH718 – Storm Capital – Southeast (\$10,250,000). To continue construction of a new enlarged system in **Tennessee Ave** upstream of Garland Park to help protect low-lying and flood prone neighborhoods



ADOPTED BUDGET

DESIGN

2020 Professional Services On-Call Contract Task Order

Category: Stormwater & Sanitary

Consultant: Muller Engineering Company

MWBE Partners:

- CIG
- Geocal
- Goodbee & Associates
- Pinyon Environmental
- Valerian

MWBE Progress through Oct 2025:

- \$197.8K to MWBE firms
- 27% of overall spend to date

CONSTRUCTION

2020 General Civil Construction Contracts

Contractor: Ames

MWBE Partners:

- Chacon Paving
- Garza Concrete Structures
- Martinez Associates
- Ardent Traffic Services
- Ram-Co Trucking
- Cowboy Trucking
- Aggregate Logistics

MWBE Progress through Oct 2025:

- \$2.15 million to MWBE firms
- 18% of overall spend

Procurement Process



Division Small Business Opportunity

Applicants must complete and include with their submittal:

- ✓ **Commitment to MWBE Participation Form**; identifying the percentage of MWBE utilization the Submitter is committed to, and
- ✓ **MWBE Utilization Plan Form**
- ✓ **DSBO Program Requirements – Signature Statement Form**

Participation goals established by DSBO utilizing:

- Project Budget
- Source of Funds
- Scope of work
- Types of services including specialized requirements (*e.g. bridges*)
- Number of certified firms available and capacity to take on additional work

Project Managers work with DSBO and Consultant firms to **monitor and progress goals** throughout contract period


2020 on-call attainment **percentages may increase** as projects are completed and payments captured

Professional Services Category On-Call Contracts



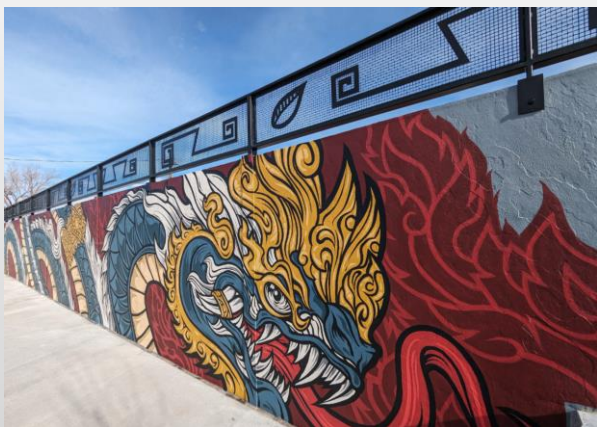
Professional Services On-Call Contracts History

Professional Service Contract Overview (2020-2025)

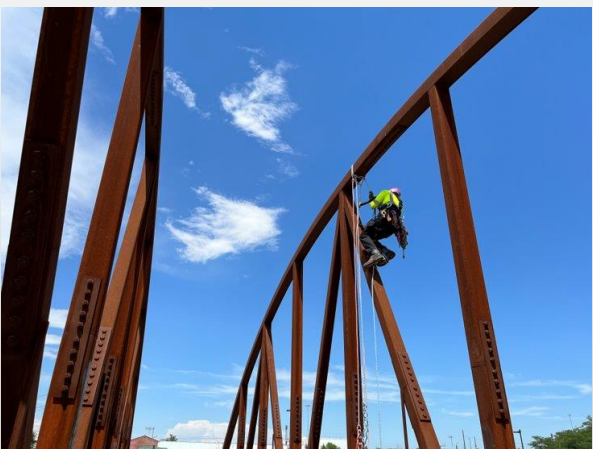
By the Numbers	# of Categories	# of Firms	Total Capacity (\$)	Capacity Used (\$)	Capacity Used (%)
	13	48	\$208.9M	\$114.6M	55%

Project Examples (2020-2025)

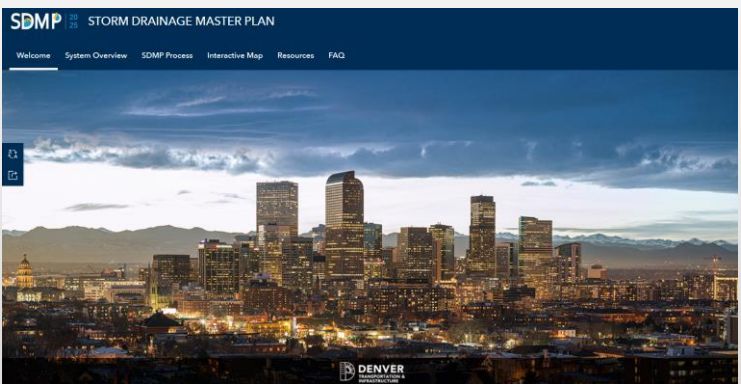
Kentucky & Irving Water Quality & Park Project Design



2024 Bridge Inspection Program



Storm Drainage Master Plan Update



2026 Professional Services Category Contracts Overview

- 14 categories
- Scopes and capacities were revised to align with predicted needs over the next 3 to 5 years
- Contracts are for 3 years, opportunity to extend to 5 years total
- Opportunity to propose on multiple categories simultaneously, but was not required

By the
Numbers



of
Categories
14

Total Available
Capacity
\$206M

of
Proposals
99

of
Opportunities

77

Total MWBE
Capacity

\$37.8M

Category Name and Number	Total Available Category Capacity	MWBE Goal (%)	# Firms Selected
Civil/Roadway Design - Cat. 1	\$40,000,000	16%	8
Bridge Design - Cat. 2	\$30,000,000	17%	6
Bridge Inspection and Asset Management - Cat. 3	\$3,000,000	--	4
Multimodal Design - Cat. 4	\$24,000,000	18%	8
Multimodal & Transportation Planning - Cat. 5	\$10,200,000	20%	6
Transit Planning & Design - Cat. 6	\$8,750,000	15%	5
Traffic Engineering - Cat. 7	\$16,500,000	18%	6
Data Collection - Cat. 8	\$4,500,000	20%	3
Utility Engineering - Cat. 9	\$4,000,000	18%	5
Green Infrastructure & Landscape Arch. - Cat. 10	\$6,000,000	30%	5
Strategic Communication & Public Engagement - Cat. 11	\$4,000,000	25%	5
Sanitary Design - Revised! Cat. 12	\$10,000,000	16%	4
Program and Project Management - Cat. 13	\$30,000,000	24%	6
Stormwater & Open Channel - NEW! Cat. 14.	\$15,000,000	16%	6

Selection Process

14 Unique Committees

- 3 voting members comprised of category subject matter experts
- 2 non-voting members from DOTI Infrastructure/Transportation and Contracts to ensure continuity and equity across all categories

Selection Criteria

- Consistent criteria and weighting across categories
- Responsive to MWBE requirements (validated by DSB0)
- Criteria Description:
 - Qualifications/experience of the firm (20%)
 - Examples of relevant projects, highlighting innovation (25%)
 - Qualifications/experience of key personnel (15%)
 - Demonstrated understanding of City values, processes, and goals (10%)
 - Commitment to delivering high-quality results (15%)
 - Effectiveness and clarity of communication (5%)

# of Proposals	# of Responsive Proposals	# of Selected Firms	# of MWBE Prime Firms	# of New Firms
99	98	45	10	12

Category Name and Number	# Firms Selected	Individual Firm Capacity
Civil/Roadway Design - Cat. 1	8	\$5,000,000
Bridge Design - Cat. 2	6	\$5,000,000
Bridge Inspection and Asset Management - Cat. 3	4	\$750,000
Multimodal Design - Cat. 4	8	\$3,000,000
Multimodal & Transportation Planning - Cat. 5	6	\$1,700,000
Transit Planning & Design - Cat. 6	5	\$1,750,000
Traffic Engineering - Cat. 7	6	\$2,750,000
Data Collection - Cat. 8	3	\$1,500,000
Utility Engineering - Cat. 9	5	\$800,000
Green Infrastructure & Landscape Arch. - Cat. 10	5	\$1,200,000
Strategic Communication & Public Engagement - Cat. 11	5	\$800,000
Sanitary Design - Revised! Cat. 12	4	\$2,500,000
Program and Project Management - Cat. 13	6	\$5,000,000
Stormwater & Open Channel - NEW! Cat. 14.	6	\$2,500,000

General Civil Construction

On-Call Contracts



Large Civil On-Call Contracts History

Large Civil Construction Contract Overview (2020-2025)

By the Numbers	# of Categories	# of Firms	Total Capacity (\$)	Capacity Used (\$)	Capacity Used (%)
	1	10	\$390M	\$140M	>35%

Large Civil Project Examples (2020-2025)

Community Transportation Network (CTN) Bike Facilities



DENVERGOV.ORG

Federal Blvd. Pedestrian Improvements (23rd to 27th)



Red Rocks South Entrance



Civil Construction Contracts Overview

Establishing a qualified pool of **on-call Prime General Contractors** to construct city infrastructure and facilities, including, but not limited to:

- Preconstruction services
- Intersections
- Roadway/pavement (*curb and gutter, sidewalks, ramps, etc*)
- Safety (*Vision Zero, signs, striping*)
- Signals
- Bike lanes/infrastructure
- Utility work
- Bridge construction

Category Name and Number	Total Category Capacity	Total Capacity Per Firm	MWBE Goal (%)	# Firms Selected	Contract Term
General Civil Construction	\$400,000,000	\$50,000,000	12%	8	3 Years

2025 General Civil Construction Contracts Overview

Selection Committees

- 6 voting members comprised of category subject matter experts
- 2 non-voting members from DOTI Infrastructure/Transportation and Contracts to ensure continuity and equity across all categories

Selection Criteria

- Responsive to MWBE requirements (validated by DSB0)
- Evaluated qualifications and experience of the firm and key personnel, as well as similar project experience
- Experience with project delivery method

Selection Criteria Description

- Qualifications/experience of the firm (20%)
- Qualifications/experience of key personnel (20%)
- Workload of the firm (10%)
- Related Project Experience (20%)
- Communication and Project Approach (20%)
- Experience with Project Delivery Method (10%)

# of Proposals	MWBE Goal	# of Selected Firms
19	12%	8



2026 Projects

These on-call packages will be used to execute DOTI's 2026 work plan and may support any of the following projects:

- Vibrant bond projects
- Emerson St Neighborhood Bikeway
- 51st and Steele Water Quality Improvements
- Upper Sanderson Gulch General Storm
- Mill 15 B (Signal Reconstruction on 16th Ave)
- New Traffic Signals (Wewatta/Cherry Creek Trail, Speer/12th, 6th/Acoma)



TODAY'S REQUEST

Respectfully request City Council approval of two packages of on-call contracts

- Professional Services Category
 - RR25-1643 through RR25-1687
- General Civil Construction Category
 - RR25-1384 through RR25-1391

? ? ? ? ?

Questions?



Appendix



TODAY'S REQUESTS – *Professional Services*

General Civil/Roadway	Bridge Design	Multimodal Design	Multimodal & Transportation Planning	Transit Planning & Design
Alfred Benesch (25-1685)	AECOM (25-1687)	ACL (25-1686) ^{1,2}	Consor (25-1679)	FHU (25-1672) ¹
David Evans (25-1676)	David Evans (25-1676)	Alta Planning & Design (25-1683) ¹	Fehr and Peers (25-1673)	HDR (25-1651)
HDR (25-1651) ¹	Hardesty & Hanover (25-1654) ¹	Consor (25-1679)	FHU (25-1672) ¹	Jacobs (25-1650)
Jacobs (25-1650) ¹	HDR (25-1651) ¹	Fehr and Peers (25-1673) ¹	HDR (25-1651)	Nelson/Nygaard (25-1666)
Kimley-Horn (25-1649) ¹	Jacobs (25-1650)	Fox Tuttle (25-1671) ²	Kimley-Horn (25-1649) ¹	Stantec (25-1667)
Michael Baker (25-1647)	WSP (25-1669)	HDR (25-1651)	Toole (25-1663)	
Rocksol (25-1646)	Bridge Inspection	Kimley-Horn (25-1649)	Traffic Engineering	
Wilson (25-1665)	Alfred Benesch (25-1685) ¹	Toole (25-1663)	ACL (25-1686)	
	Engineering Operations LLC (25-1674) ¹		Consor (25-1679)	
	Stantec (25-1667)		HDR (25-1651) ¹	
	Ulteig (25-1658) ¹		Michael Baker (25-1647)	
			Muller (25-1661)	
			Stantec (25-1667) ¹	

¹ New Firm to Category

² MWBE Certified Firm

TODAY'S REQUESTS – *Professional Services*

Data Collection
All Traffic Data (25-1684)
Jacobs (25-1650) ¹
Nelson/Nygaard (25-1666)

Utility Engineering
Goodbee (25-1653) ²
Harris Kocher (25-1652)
Lamb-Star (25-1643) ^{1, 2}
T2 UES (25-1668) ¹
Triunity (25-1659)

Green Infrastructure
DIG (25-1675) ¹
Livable Cities (25-1648) ²
Stantec (25-1667)
Stream (25-1645)
Wenk (25-1657) ²

Public Engagement
CIG (25-1681) ²
Currie (25-1678) ^{1, 2}
Fuse (25-1655) ²
GBSM (25-1656)
Ordonez & Vogelsang (25-1660) ^{1, 2}

Program & Project Management
Atkins (25-1682)
Cumming (25-1680) ¹
HNTB (25-1644)
Jacobs (25-1650)
Triunity (25-1659)
WSP (25-1669)

Sanitary Design
Merrick (25-1662)
Muller (25-1661)
RESPEC (25-1664)
Stantec (25-1667)

Storm & Open Channel
Dewberry (25-1677) ¹
Freese & Nichols (25-1670) ¹
Merrick (25-1662)
Muller (25-1661)
Stantec (25-1667)
Wilson (25-1665)

¹ New Firm to Category

² MWBE Certified Firm



TODAY'S REQUESTS

Large Civil Construction
25-1384 Ames
25-1385 Concrete Express
25-1386 Flatiron Dragados
25-1387 Graham
25-1388 Hamon ¹
25-1389 Iron Woman
25-1390 Kraemer NA
25-1391 SEMA Construction

¹ New Firm to Category



Example: 2 Design Projects
Category: Stormwater & Open Channel
Total Firms: 6

Design Project #1
Design Cost: \$1M

Design Project #2
Design Cost: \$1M

Firm #1
Available
Capacity: >\$1M

Firm #2
Available Capacity:
>\$1M

Firm #3
Available Capacity:
>\$1M

Firm #4
Available
Capacity: >\$1M

Firm #5
Available Capacity:
>\$1M

Firm #6
Available Capacity:
>\$1M

Mini Selection Process

Capacity Needed: \$6M
Capacity Actually Used: \$2M
Usage: 33%

Firm #2
Selected Firm:
\$1M Task Order

Firm #5
Selected Firm:
\$1M Task Order