



DENVER
THE MILE HIGH CITY

April 2019 - Program Update

Platte to Park Hill: Stormwater Systems

LUTI Committee



FOR CITY SERVICES VISIT | CALL
DenverGov.org | **311**



DENVER
THE MILE HIGH CITY

Program Summary

PLATTE TO PARK HILL STORMWATER SOLUTIONS





DENVER
THE MILE HIGH CITY

Program Summary: Goals

ENVIRONMENTAL



REDUCED FLOODING TO DIVERSE NEIGHBORHOODS



INTEGRATED INFRASTRUCTURE AND WATER QUALITY

SOCIAL



IMPROVED NEIGHBORHOOD CONNECTIVITY



ENHANCED EXISTING CITY-WIDE RECREATIONAL ASSETS



PROVIDED NEW NEIGHBORHOOD PARK AMENITIES



AN ENGAGED CITY

THE CLIENT

City & County of Denver

Mayor's Office Parks and Recreation
Public Works Community Planning and Development

EXPERTISE

Landscape Architects Civil Engineers
Urban Designers Geotech Engineers
Planners Public Outreach
Drainage Engineers

KEY PARTNERS

Colorado Department of Transportation Urban Drainage & Flood Control District
Regional Transportation District US Army Corps of Engineers



STRATEGIES FOR PUBLIC ENGAGEMENT





PROJECT RESULTS



8,450 LF
of New Open Wetland Channel. Approximately 23 football fields



3 Miles
New bicycle and pedestrian facilities



5,079
Properties with additional flood protection



14
New acres of Park and Open Space



3,102 Cubic ft
capacity of debris with installation 3 new trash vaults. Equivalent of 2.2 freight containers



FIRST
Shared street in Denver



FIRST
Accessible stormwater outlet structure



99%
Priority trees preserved in City Park Golf Course



3,700 CFS
In a 100-year storm event (average flow in S. Platte River at Confluence Park is 400 CFS)



3
New nature play areas



DENVER
THE MILE HIGH CITY

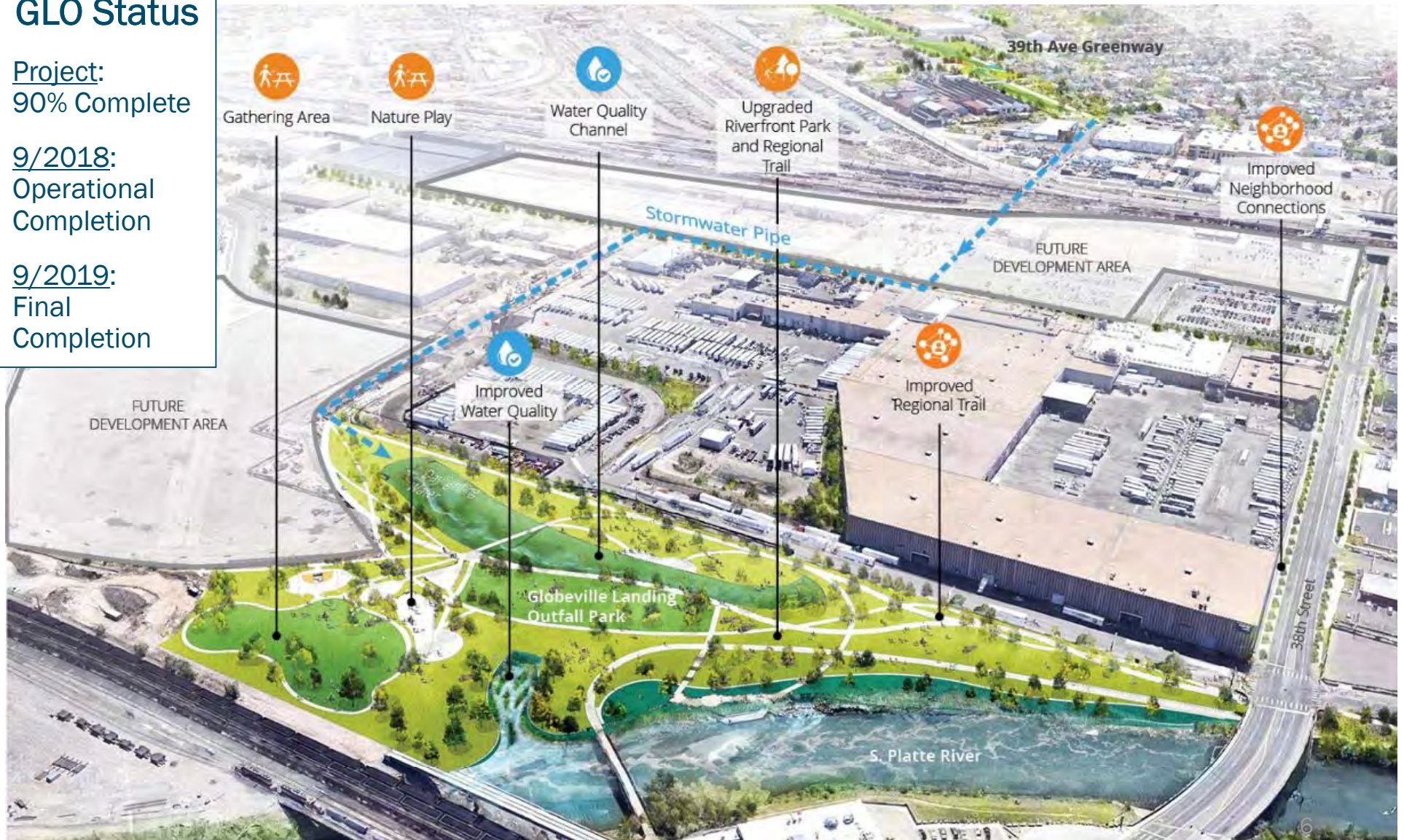
Globeville Landing Outfall

GLO Status

Project:
90% Complete

9/2018:
Operational
Completion

9/2019:
Final
Completion





DENVER
THE MILE HIGH CITY

City Park Golf Course



CPGC Status

Project: 90% Complete

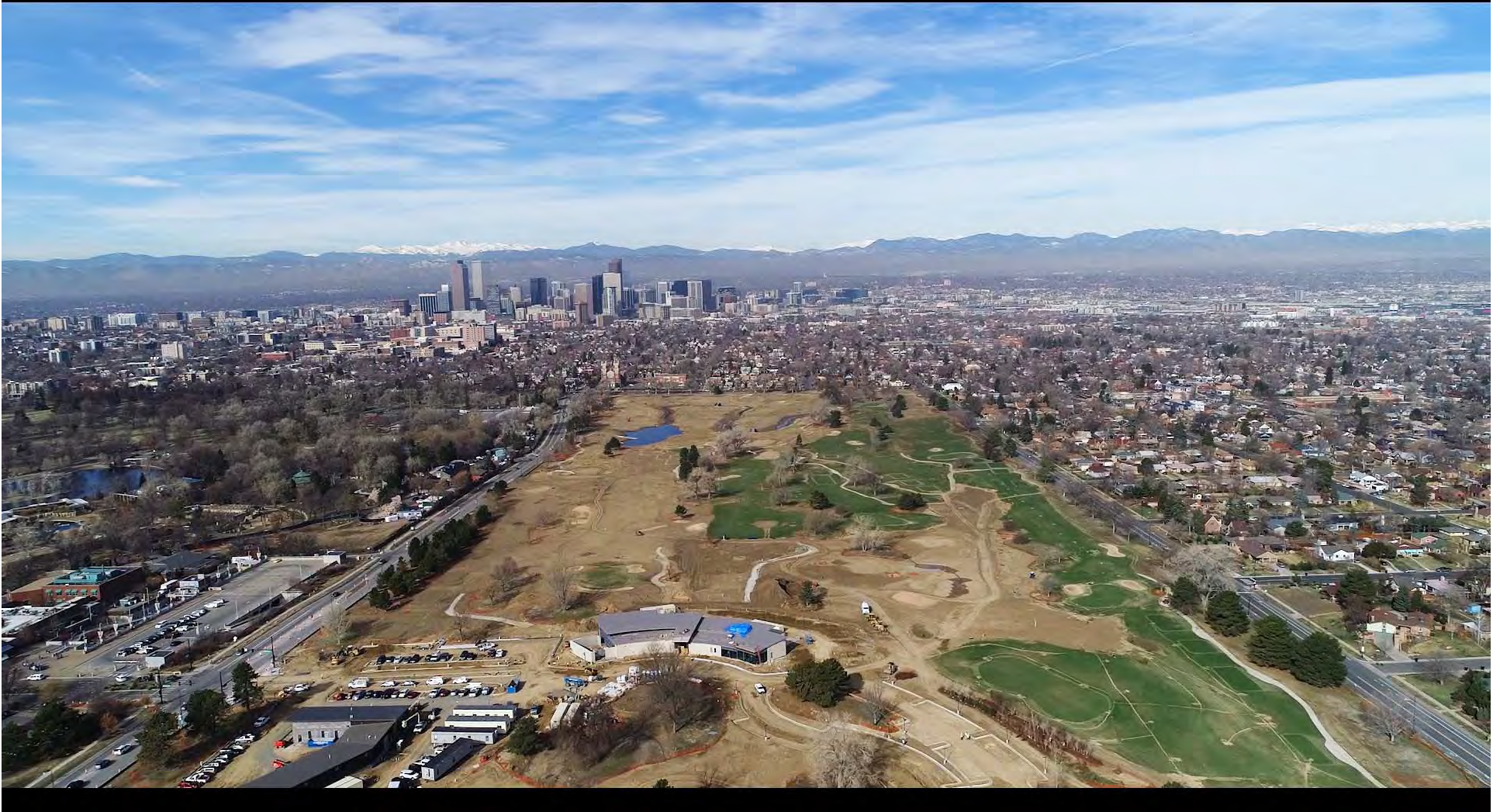
8/2018: Operational Completion

6/2019: Final Completion



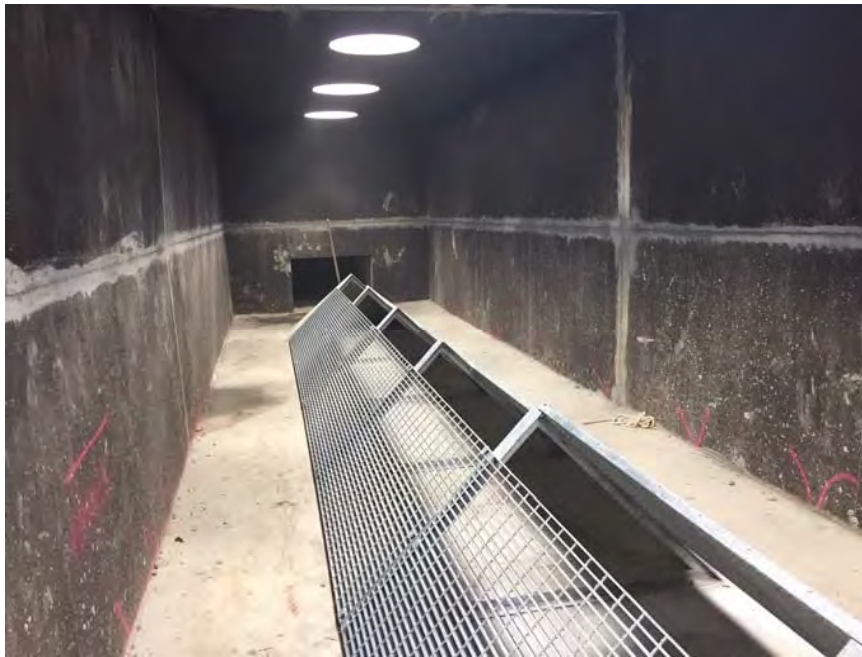
DENVER
THE MILE HIGH CITY

City Park Golf Course



Drone flight video

New Trash Vault at City Park Golf Course



Installed Trash Rack



Collected Debris from storm system



DENVER
THE MILE HIGH CITY

Park Hill-Conceptual Design

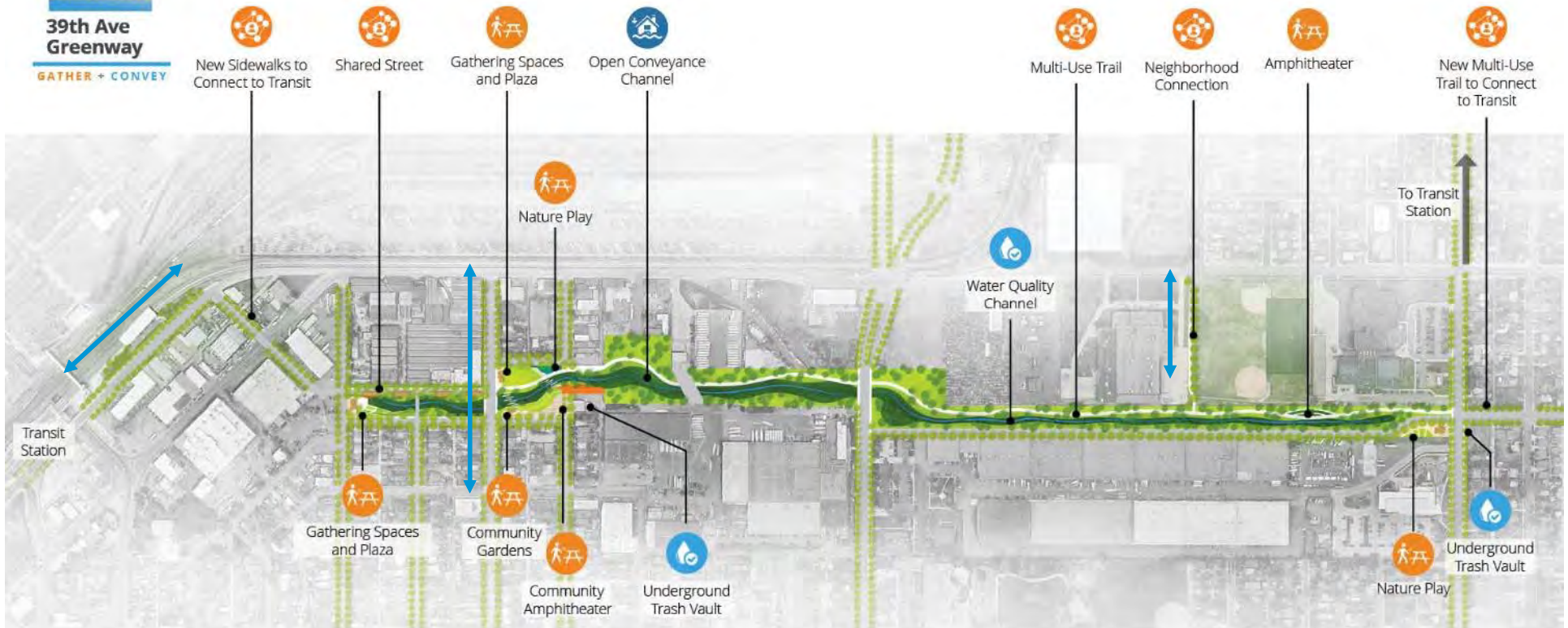


Park Hill Status

Project:
20% Complete

9/2019:
Operational
Completion

6/2020:
Final
Completion



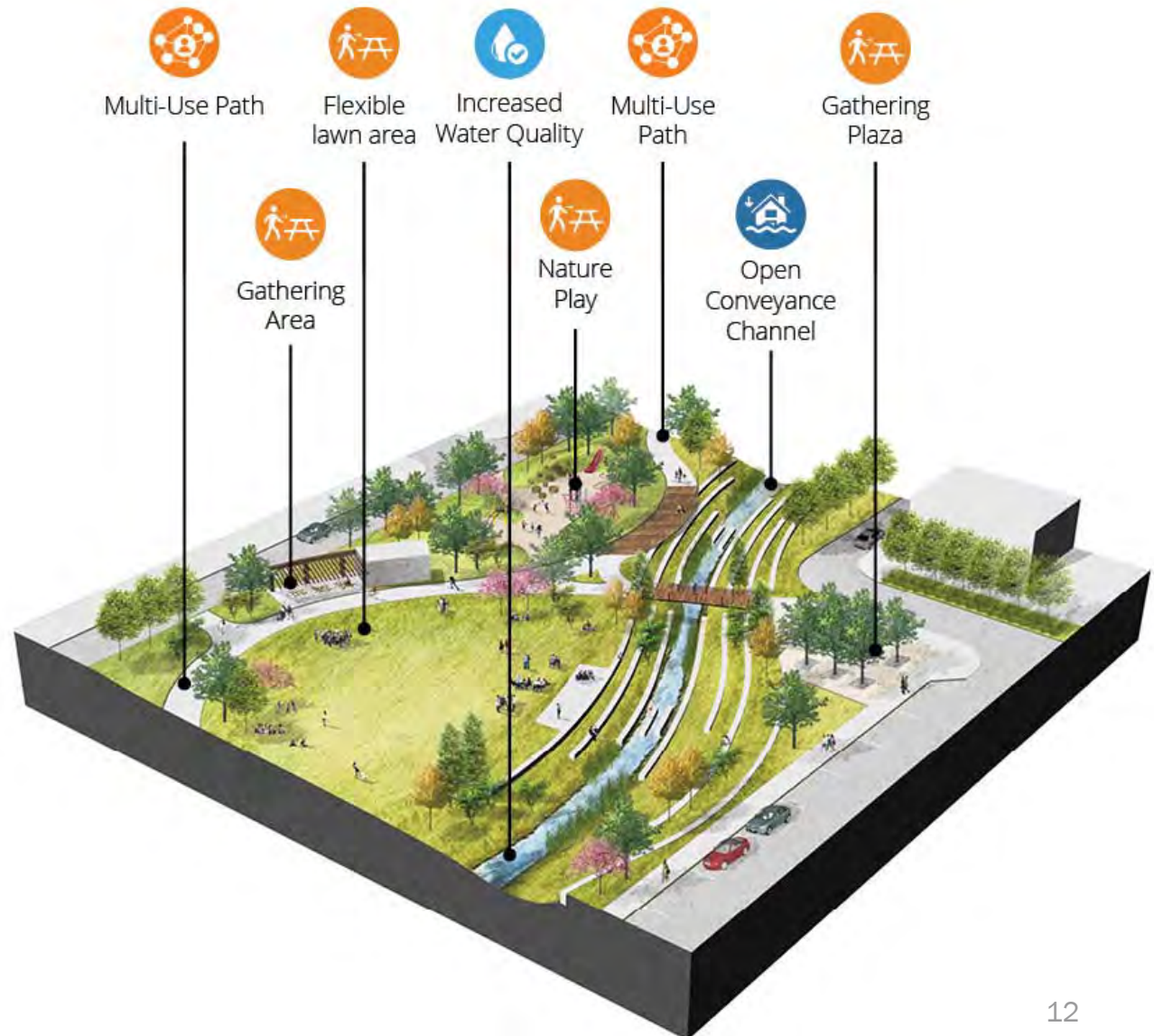
Greenway Status

Project: 40% Complete

9/2019: Operational Completion

6/2020: Final Completion

- Provides approximately 10,000 SF of new Nature Play amenities
- Will collect and convey over 3,700 CFS in a 100-year event
- Includes 4,850 LF of new open channel-greenway with adjacent multi-use path





DENVER
THE MILE HIGH CITY

Franklin Outlet Structure





DENVER
THE MILE HIGH CITY

39th Shared Street



Globeville Landing Outfall

- EPA Removal Action nearing completion.
- EPA approved the maintenance plan for the open channel.
- Completed EPA mandated air monitoring, with no issues detected.

City Park Golf Course

- Full compliance with MMP and EPA mandated groundwater monitoring.



39th Avenue Greenway

- Environmental supervisor on site during construction activities. Project in compliance with the city's Material Management Plan (MMP).
- Conducted air quality monitoring since February 2018 with no issues detected.
- Removed areas of contamination prior to channel construction.

Park Hill Golf Course

- Environmental supervisor on site during construction activities. Project in compliance with the city's Material Management Plan (MMP).
- Diverting excavated soil for third party reuse, saving the city approximately \$10M to \$13M in disposal costs.



Sources	Scope			
	Base	Other	Amenities	Total
Wastewater Enterprise Fund	\$ 14.9 M	\$ -	\$ -	\$ 14.9 M
2016 Wastewater Revenue Bond	\$ 129.3 M	\$ -	\$ -	\$ 129.3 M
2018 Wastewater Revenue Bond	\$ 76.7 M	\$ -	\$ -	\$ 76.7 M
Interest Earnings	\$ 0.6 M	\$ -	\$ -	\$ 0.6 M
Environmental Service Enterprise Fund	\$ 4.0 M	\$ -	\$ -	\$ 4.0 M
Urban Drainage and Flood Control District	\$ 9.5 M	\$ -	\$ -	\$ 9.5 M
Colorado Department of Transportation	\$ 63.0 M	\$ -	\$ 12.7 M	\$ 75.7 M
Capital Improvement Fund	\$ -	\$ -	\$ 13.3 M	\$ 13.3 M
Wastewater Enterprise Fund (Sanitary)	\$ -	\$ 2.4 M	\$ -	\$ 2.4 M
Denver Water	\$ -	\$ 5.3 M	\$ -	\$ 5.3 M
Total	\$ 298.0 M	\$ 7.7 M	\$ 26.0 M	\$ 331.7 M

- Other Scope includes additional scope not related to Base Project
- Amenities Scope includes neighborhood improvements not eligible for WW Enterprise Funds.

Uses	Scope				% Spent
	Base	Other	Amenities	Total	
Globeville Landing Outfall	\$ 80.4 M	\$ -	\$ 3.3 M	\$ 83.7 M	86%
City Park Golf Course	\$ 45.4 M	\$ 5.3 M	\$ -	\$ 50.7 M	78%
39th Avenue Greenway / Park Hill	\$ 67.8 M	\$ -	\$ 15.8 M	\$ 83.6 M	28%
Park Hill Phase 5	\$ 5.2 M	\$ 2.4 M	\$ -	\$ 7.6 M	100%
Program Management	\$ 7.6 M	\$ -	\$ -	\$ 7.6 M	66%
Program Contingency	\$ 21.5 M	\$ -	\$ 1.6 M	\$ 23.1 M	-
Real Estate	\$ 60.5 M	\$ -	\$ 3.3 M	\$ 63.8 M	90%
Other Program Cost (Planning, Fee)	\$ 9.6 M	\$ -	\$ 2.0	\$ 11.6 M	66%
Total	\$ 298.0 M	\$ 7.7 M	\$ 26.0 M	\$ 331.7 M	60%



PROJECT		GOAL
Globeville Landing Outfall		
		Precon 12% Transportation 14% Drainage 6%
City Park Golf Course		
	Design	15%
	Construction	17%
39 th Greenway/ Park Hill		
	Design	23%
	Construction	12%



- New Clubhouse at CPGC
- Greenway Construction
- Globeville Landing Outfall

Contact:

Nancy Kuhn

Public Works

Nancy.Kuhn@denvergov.org

(720) 865-8720

Thank You!