

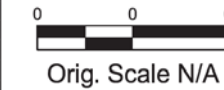


1560 BROADWAY, SUITE 700
DENVER, COLORADO 80202
(303) 299-6990

Sheet Revisions		
Date	Description	Initials
06-27-13	Released for RFP	MAH
12-13-13	NTP	MAH
04-23-14	Update	MAH

Sheet Revisions		
Date	Description	Initials

Sheet Revisions		
Date	Description	Initials



Right of Way Plans				
Title Sheet				
Project Number: 70018				
Project Location: RTD Fastracks North Metro Rail Line				
Project Location: Denver Union Station to Highway 7				
Project Code:	Last Mod. Date	Subset Sheets	Sheet No.	Total No. of Sheets
			1A	172

Date	Description	Sheets	Initials
03/28/13	Revised Parcels NM-10 & PE-9	2A, 16-18	JSX
04/01/13	Revised Parcels NM-6 & PE-6	2, 13-15	JSX
04/02/13	Revised Parcels NM-5, PE-5, NM-11	2, 2A, 13, 18	JSX
04/03/13	Revised Parcels NM-4, NM-13, Removed Parcel PE-4, PE-15	2-2B, 9, 10	JSX
04/04/13	Revised Parcel PE-8	2, 16	JSX
04/08/13	Added Parcel PE-6A, PE-14A	2, 15	JSX
05/20/13	Removed Parcel PE-6-REV1, Revised Parcel PE-6A, PE-20	2, 2C, 13-15, 32	MAH
06/04/13	Revised Parcels PE-20A, PE-20C, PE-20D, & PE-20W	2C, 32-34, 36, 39	MWV
06/20/13	Revised Parcels NM-5-REV1 & PE-5-REV1	2, 13, 28	JSX
06/27/13	Released for RFP		
07/15/13	Revised Parcels NM-3, NM-5 & PE-5	2, 10, 149	JSX
07/16/13	Revised Parcels NM-12C & PE-12B	2A, 2B, 22-26, 151	JSX
07/26/13	Revised Parcel NM-12	2A, 21-24, 151	JSX
07/31/13	Added Parcels NM-25R, NM-29R, NM-29AR, NM-30R & NM-32R	2C, 32, 41, 47, 153-155	JSX
08/08/13	Added Parcels NM-3B, NM-3C, NM-3D, NM-3E, NM-3F & Revised Parcels NM-3, NM-3A, NM-14, NM-14A, NM-14B	2, 2B, 10-13, 18-20, 149-151	JSX
08/20/13	Removed Parcel NM-45 & Revised Parcel NM-34	2D, 66, 67, 158, 159	JSX
10/10/13	Added Parcel NM-42A, NM-42B, NM-42C Labels & Rev. NM-42A acreage	2D, 105-108, 165, 166	MAH
10/16/13	Edited Address for Parcels NM-32 & NM-32R	2C	MAH
11/25/13	Revised Parcel NM-32A	2C, 47-50, 155, 156	MAH
11/25/13	Added Parcels PE-25, PE-25A	2C, 32, 153	MAH
11/26/13	Revised Design for 72nd Avenue Station	2C, 47-50, 155, 156	MAH
12/06/13	Revised Ownership of Parcel NM-7	2, 15, 15B, 150	MAH
12/06/13	Removed Parcel NM-37, Added Parcel NM-42D	2D, 66, 67, 158, 159	MAH
12/06/13	Added Parcels NM-34-REV1, NM-35, NM-35A, NM-36, NM-42D Labels	2D, 66, 67, 68, 158, 159	MAH
12/11/13	Added Parcels NM-47, NM-47A, NM-48A	2E, 79, 80, 81, 82, 161	MAH
12/13/13	NTP		
12/23/13	Added Parcel NM-43	2D, 125-127, 168-169	JSX
01/02/14	Added Parcels NM-38 & NM-39	2D, 94-96, 163-164	JSX
01/07/14	Added Parcel PE-32, Revised Parcel NM-32A-REV1	2C, 47- 49, 155, 156	MAH
01/10/14	Removed Parcel NM-37A, Added Parcel NM-42E	2D,2E,106-108,165,166	MAH
01/22/14	Removed Parcel PE-32, Added Parcel NM-32B	2C, 2D, 47, 49, 155	MAH
01/23/14	Added Easement Information	15, 15B, 16, 17	MAH
01/29/14	Updated Parcel NM-7-REV1 Title Information, Updated Parcels NM-8, PE-8-REV1, NM-9, PE-9-REV1 Title Information and Parcel Address	2, 2A	MAH
02/11/14	Added Parcel NM-46 Parent Parcel Information	2E, 81,161	MAH
02/14/14	Added Parcels NM-49, NM-50, NM-51	2E, 163	MAH
03/21/14	Added Parcels NM-40, NM-41, Added Labels for Parcel NM-42E	2D, 2E, 106, 107, 108, 165, 166	MAH
04/18/14	Updated Parcel NM-32 Ownership Color	2C,2D,47,48,49,155,15	MAH
04/22/14	Added Labels for Parcels NM-47, NM-47A, NM-48	2E, 79, 80, 81, 82, 161	MAH
04/22/14	Added Parcel PE-2A	2, 34, 35,153	MAH
04/22/14	Added Parcel PE-33I	2D, 47, 49, 155	MAH
04/22/14	Added Parcels NM-52, NM-53	2E, 41, 154	MAH
04/22/14	Added Parcel NM-54	2E, 67, 68, 159	MAH
04/23/14	Added Parcels NM-55, NM-56, NM-57, NM-57A, NM-58	2E, 65, 65A, 158	MAH
04/22/14	Added Parcel PE-59	2F, 93, 163	MAH
04/22/14	Added Parcel PE-42	2D, 83, 84, 161	MAH
04/23/14	Update	Plan Set	MAH
05/22/14	Added Labels for Parcel NM-38	2D, 95, 96, 163, 164	MAH

Date	Description	Sheets	Initials
06/03/14	Added Labels for Parcel NM-50	2E, 90, 91, 91A, 163	MAH
06/04/14	Removed Parcel NM-24, Added Parcel NM-53	2C, 40, 154	MAH
06/17/14	Revised Parcel NM-35	2D, 66, 67, 68, 158, 159	MAH
07/07/14	Added Labels for Parcel NM-39	2D, 94, 95, 96, 163	WML
07/11/14	Removed Parcel NM-47A, Revised Parcel NM-47	2E, 79, 80, 81, 161	KRW
08/04/14	Revised Ownership of Parcel NM-36	2D, 67, 158, 159	KRW
08/20/14	Updated Design Files	Plan Set	MAH
09/10/14	Revised Parcel NM-41	2D, 106, 107, 108, 165, 166	KRW
09/17/14	Revised Ownership of Parcel NM-36-REV1	2D, 67, 158, 159	MAH
09/25/14	Updated Design Files	Plan Set	MAH
09/30/14	Upload to Plan Set to Aconex RTD-INFML-001560	Plan Set	MAH
10/03/14	Revised Parcel NM-40	2D, 107, 108, 109, 165, 166	MAH
10/06/14	Revised Parcel NM-48	2E, 80, 81, 82, 161	MAH
10/09/14	Added Parcel NM-6A	2, 13, 150	MAH
10/09/14	Added Parcel PE-23	2C, 34, 35, 35A, 153	MAH
10/15/14	Revised Parcel NM-34-REV1	2D, 66, 67, 158, 159	MAH
10/22/14	Revised Parcel NM-12C-REV1	2A, 23, 24, 25, 26, 151, 152	KRW
10/27/14	Updated Design Files	Plan Set	MAH
10/28/14	Removed Parcels PE-42 & PE-59	2E, 2F, 83, 84, 93, 161, 163	MAH
10/30/14	Updated Design Files	Plan Set	MAH
10/31/14	Added Parcel Labels for NM-46	2E, 80, 81, 82, 161	MAH
11/11/14	Added Plat Info Devonshire Square Second Filing	63, 64	SOO
11/07/14	Added Parcels NM-53A & NM-53B	1A, 2E, 2F, 49, 49A, 155	MAH
11/20/14	Updated Design Files	Plan Set	MAH
11/21/14	Added Parcel NM-53 (Previously Submitted as Parcel NM-24)	2E, 40, 154	MAH
11/24/14	Added Parcel Labels for PE-53	2E, 41, 154	MAH
12/05/14	Added Parcel NM-1A	2, 11, 12, 149	MAH
12/12/14	Removed Parcel PE-21, Added Parcel NM-21	2B, 35, 36, 153	MAH
12/12/14	Updated Design Files	Plan Set	MAH
12/15/14	Added Labels for Parcel NM-1D	2, 24-32, 151-153	MAH
12/17/14	Updated Design Files	Plan Set	MAH
01/05/15	Removed Parcel NM-27, Added Parcel PE-27	2C, 37, 154	MAH
01/05/15	Removed Parcel NM-27A, Added Parcel PE-27A	2C, 38, 154	MAH
01/05/15	Removed Parcel NM-27AA, Added Parcel PE-27AA	2C, 38, 39, 154	MAH
01/08/15	Revised Parcel NM-1D, Added Parcel PE-1D	2, 24-32, 151-153	MAH
01/19/15	Removed Parcels PE-8-REV1 & PE-9-REV1	2A, 16, 150	MAH
01/26/15	Revised Parcel NM-1D-REV1, Added Parcel NM-1DA	2, 24-31, 151-153	MAH
02/04/15	Revised Parcel NM-32A-REV2, Added Parcel NM-32C	2D, 47-50, 155, 156	MAH
04/10/15	Updated Design Files	Plan Set	MAH
04/21/15	Added Easement Information	31, 32, 88, 89	MAH
04/23/15	Revised Parcels NM-46 & NM-48-REV1	2E, 80, 81, 82, 161	BPB
04/28/15	Added Easement Information	27, 38	MAH
05/08/15	Added Parcels NM-12D & PE-12C, Revised Parcel NM-12-REV1	2A, 2B, 20-24, 151	BPB
06/04/15	Revised Parcel PE-12C	2B, 22, 151	BPB

6/9/2015 12:45:00 PM K:\072120_Fastracks\NORTH METRO\dgn\ROWPlan_Sheets\NM-VR-PL001TTI-REV.dgn



1560 BROADWAY, SUITE 700
DENVER, COLORADO 80202
(303) 299-6990

Sheet Revisions		
Date	Description	Initials
06-27-13	Released for RFP	SOO
07-16-13	Revised NM-12C	JSX
07-26-13	Revised NM-12	SOO
12-13-13	NTP	MAH
01-29-14	Updated Parcels NM-8, PE-8-REV1, NM-9, PE-9-REV1	MAH
	Title Information and Parcel Address	MAH
04-23-14	Update	MAH

Sheet Revisions		
Date	Description	Initials
10-22-14	Revised Parcel NM-12C-REV1	KRW
01-19-15	Removed Parcels PE-8-REV1 & PE-9-REV1	MAH
05-08-15	Revised Parcel NM-12-REV1	MAH

Sheet Revisions		
Date	Description	Initials



707 17th Street, Suite 2400
Denver, Colorado 80202
Phone: 303-820-5240
Fax: 303-820-5298

Right of Way Plans Tabulation of Properties				
Project Number: 70018				
Project Location: RTD Fastracks North Metro Rail Line				
Project Location: Denver Union Station to Highway 7				
Project Code:	Last Mod. Date:	Subset Sheets:	Sheet No.:	Total No. of Sheets:
	05-08-15		2A	172

Parcel Number	ROW Sheet Number	Owner / Address	Parcel Address	State Parcel I.D. Number	Area In Acres (Square Feet)				Bk. & Pg. No. And / Or Rec. No.	Property Release Date	Remarks
					Area of Parcel	Existing ROW	Net Area	Remainder Left			
PE6 REV1		PARCEL REMOVED						N/A	N/A		Parcel Removed
NM 6A	13	Reddy Ice Corp PO Box 311220, New Braunfels, TX 78131	2101 31st St	0222400099000	4.155 (180,986)		0.135 (5,897)	N/A	4.020 (175,089)		03903A2008
PE6A REV1	15, 15B	Reddy Ice Corp PO Box 2250, Universal City, TX 78148	2101 31st St	0222400071000	6.284 (273,716)		0.088 (3,812)				03903A2008
NM-7 REV1	15	Taxi Building III LLC 3455 Ringsby Ct, Denver, CO 80216	2101 31st St	0222400070000	1.898 (82,662)		0.480 (20,900)	N/A	1.418 (61,762)		03892DA2008
NM 8	15, 16	Taxi Building III LLC 3455 Ringsby Ct, Denver, CO 80216	3459 Ringsby Ct	0222400080000	2.340 (101,920)		0.506 (22,049)	N/A	1.834 (79,871)		03896D2008 Parcel B
PE8 REV1		PARCEL REMOVED						N/A	N/A		Parcel Removed
NM 9	16	Ringsby Court LLC 3455 Ringsby Ct, Denver, CO 80216	3457 Ringsby Ct	0222400081000	0.454 (19,772)		0.258 (11,231)	N/A	0.196 (8,541)		03896D2008 Parcel A
PE9 REV1		PARCEL REMOVED						N/A	N/A		Parcel Removed
NM10 REV1	16, 17, 18	Ready Mixed Concrete Company PO Box 2290, Denver, CO 80201	4395 Washington St	0222400078000	6.262 (272,775)		2.342 (102,006)	N/A	3.920 (170,769)		0402CB2008
NM11 REV1	18	KLN Properties LLC 2003 King Way, Denver, CO 80211	4410 Washington St	0222138021000	1.342 (58,476)		0.214 (9,322)	N/A	1.128 (49,154)		
NM12 REV2	20, 21, 22	Western Stock Show Association 4655 Humboldt St, Denver, CO 80216	4700 Lafayette	0223200200000	7.410 (322,779)		0.825 (35,929)	N/A	6.585 (286,850)		H0317655
NM12 REV2	20, 21, 22	Western Stock Show Association 4655 Humboldt St, Denver, CO 80216	4700 Lafayette	0223200206000				N/A	N/A		H0317655
NM12 REV2	20, 21, 22	Western Stock Show Association 4655 Humboldt St, Denver, CO 80216	4700 Lafayette	0223200209000				N/A	N/A		H0317655
NM12 REV2	20, 21, 22	Western Stock Show Association 4655 Humboldt St, Denver, CO 80216	4700 Lafayette	0223201037000				N/A	N/A		H0317655
NM 12A	21	Western Stock Show Association 4655 Humboldt St, Denver, CO 80216	4655 Humboldt St	0223200203000 0223200204000 0223200220000	3.550 (154,637)		0.000 (21)	N/A	3.549 (154,616)		H0317655
NM 12A	21	City and County of Denver 201 W Colfax Ave, Denver, CO 80202	4655 Humboldt St		see above		see above	N/A	N/A		Improvements Only
NM 12A	21	Aramark Entertainment Services P.O. Box 7548 Philadelphia, PA 19101	4655 Humboldt St		see above		see above	N/A	N/A		Improvements Only
NM 12B	22	Western Stock Show Association 4655 Humboldt St, Denver, CO 80216, also	4655 Humboldt St	0223200203000 0223200204000 0223200220000	5.363 (233,618)		0.011 (477)	N/A	5.352 (233,141)		H0317655
NM 12B	21	City and County of Denver 201 W Colfax Ave, Denver, CO 80202	4655 Humboldt St		see above		see above	N/A	N/A		Improvements Only
NM 12B	21	Aramark Entertainment Services P.O. Box 7548 Philadelphia, PA 19101	4655 Humboldt St		see above		see above	N/A	N/A		Improvements Only
NM12C REV2	23-26	Western Stock Show Association 4655 Humboldt St, Denver, CO 80216	1400 E 47th Ave	0214300025000	9.133 (397,817)		2.465 (107,373)	N/A	6.668 (290,444)		H0326210
NM12C REV2	23-26	Western Stock Show Association 4655 Humboldt St, Denver, CO 80216	1400 E 47th Ave	0214408002000	see above		see above	N/A	N/A		H0326210
NM12C REV2	23-26	Western Stock Show Association 4655 Humboldt St, Denver, CO 80216	1400 E 47th Ave	0214300118000	see above		see above	N/A	N/A		H0326210
NM12C REV2	23-26	Western Stock Show Association 4655 Humboldt St, Denver, CO 80216	1400 E 47th Ave	0214400095000	see above		see above	N/A	N/A		H0326210

PRELIMINARY
SUBJECT TO REVISION

Exhibit C

5/8/2015 10:11:03 AM K:\072120 Fastracks\NORTH METRO\dgn\ROWPlan_Sheets\NM-VR-PL002TAB.dgn



1560 BROADWAY, SUITE 700
DENVER, COLORADO 80202
(303) 299-6990

Sheet Revisions		
Date	Description	Initials
06-27-13	Released for RFP	SOO
07-16-13	Revised PE-12B	JSX
08-08-13	Added Parcels NM-14A, NM-14B & Revised Parcel NM-14	JSX
12-13-13	NTP	MAH
04-23-14	Update	MAH
12-12-14	Removed Parcel PE-21, Added Parcel NM-21	MAH

Sheet Revisions		
Date	Description	Initials
05-08-15	Added Parcels PE-12C	MAH
06-04-15	Revised Parcel PE-12C	MAH

Sheet Revisions		
Date	Description	Initials

JACOBS™
707 17th Street, Suite 2400
Denver, Colorado 80202
Phone: 303-820-5240
Fax: 303-820-5298

Right of Way Plans Tabulation of Properties				
Project Number: 70018				
Project Location: RTD Fastracks North Metro Rail Line				
Project Location: Denver Union Station to Highway 7				
Project Code:	Last Mod. Date:	Subset Sheets:	Sheet No.:	Total No. of Sheets:
	06-04-15		28	172

Parcel Number	ROW Sheet Number	Owner / Address	Parcel Address	State Parcel I.D. Number	Area In Acres (Square Feet)				Bk. & Pg. No. And / Or Rec. No.	Property Release Date	Remarks
					Area of Parcel	Existing ROW	Net Area	Remainder Left			
NM 12D	22, 23	Western Stock Show Association 4655 Humboldt St, Denver, CO 80216	4700 Lafayette	0223200200000	7.410 (322,779)		0.550 (23,958)	N/A N/A	6.860 (298,821)		H0317655
PE 12	21	Western Stock Show Association 4655 Humboldt St, Denver, CO 80216	1101 E. 46th Ave	0223200206000			0.005 (237)	N/A N/A	N/A N/A		H0317655
PE 12A	22	Western Stock Show Association 4655 Humboldt St, Denver, CO 80216	4700 Lafayette	0223200203000 0223200204000 0223200220000			0.028 (1,213)	N/A N/A	N/A N/A		H0317655
PE 12A	22	Western Stock Show Association 4655 Humboldt St, Denver, CO 80216	4700 Lafayette	0223200209000			see above	N/A N/A	N/A N/A		H0317655
PE12B REV1	22, 23, 24	Western Stock Show Association 4655 Humboldt St, Denver, CO 80216	4700 Lafayette	0223200200000			0.378 (16,477)	N/A N/A	N/A N/A		H0326210
PE12B REV1	22, 23, 24	Western Stock Show Association 4655 Humboldt St, Denver, CO 80216	4700 Lafayette	0223201037000			see above	N/A N/A	N/A N/A		
PE12C REV1	23	Western Stock Show Association 4655 Humboldt St, Denver, CO 80216	4700 Lafayette	0223200200000	7.410 (322,779)		0.038 (1,668)	N/A N/A	N/A N/A		H0317655
NM13 REV1	9	EJ Holdings LLLP & Howard L. Bellowe 2222 S. Albion St, Denver, CO 80222	2323 Delgany St	0227401012000	3.667 (159,732)		0.086 (3,745)	N/A N/A	3.581 (155,987)		
NM14 REV1	11	Regional Transportation District 1600 Blake St, Denver, CO 80202	1960 31st St	0227300095000	9.304 (405,279)		0.045 (1,950)	N/A N/A	9.259 (403,329)		
PE 14		PARCEL REMOVED						N/A N/A	N/A N/A		Parcel Removed
NM 14A	11, 12, 13	Regional Transportation District 1600 Blake St, Denver, CO 80202			9.304 (405,279)		0.904 (39,366)	N/A N/A	N/A N/A		
PE 14A	15B	Regional Transportation District 1600 Blake St, Denver, CO 80202	2019 31st St		4.830 (210,405)		0.077 (3,348)	N/A N/A	4.753 (207,057)		
PE 14B		PARCEL REMOVED						N/A N/A	N/A N/A		Parcel Removed
PE 15		PARCEL REMOVED						N/A N/A	N/A N/A		Parcel Removed
NM 16		NOT USED						N/A N/A	N/A N/A		
NM 17		NOT USED						N/A N/A	N/A N/A		
NM 18		NOT USED						N/A N/A	N/A N/A		
NM 19		NOT USED						N/A N/A	N/A N/A		
PE20 REV1	32	SUNCOR ENERGY (U.S.A.) INC.	Commerce City CO	0182513202001	0.627 (27,296)		0.000 (9)	N/A N/A	N/A N/A		P/O Lot 1, Block 2, SUNCOR SUBDIVISION FILING NO. 1 Reception Number 201200007022, 1-31-2012
PE20A REV1	32, 33, 34	SUNCOR ENERGY (U.S.A.) INC.	Commerce City CO	0182513201001	22.526 (981,239)		0.641 (27,910)	N/A N/A	N/A N/A		P/O Lot 2, Block 1, SUNCOR SUBDIVISION FILING NO. 1 Reception Number 201200007022, 1-31-2012
PE20C REV1	36	SUNCOR ENERGY (U.S.A.) INC.	Commerce City CO	0182512102002	137.990 (6,010,846)		0.050 (2,188)	N/A N/A	N/A N/A		P/O Lot 1, Blk 1, COMOCO SUBDIVISION FILING NO. 1 Reception Number C0316498, 9-11-1997
PE20D REV1	39	SUNCOR ENERGY (U.S.A.) INC.	Commerce City CO	0182512102002 0182512102003	137.990 (6,010,846)		0.003 (137)	N/A N/A	N/A N/A		P/O Lot 1, Blk 1, & Tract A, COMOCO SUBDIVISION FILING NO. 1 Reception Number C0316498, 9-11-1997
PE20W REV1	32, 33	SUNCOR ENERGY (U.S.A.) INC.	Commerce City CO	0182513201001	22.526 (981,239)		0.051 (2,231)	N/A N/A	N/A N/A		P/O Lot 2, Block 1, SUNCOR SUBDIVISION FILING NO. 1 Reception Number 201200007022, 1-31-2012
PE 20Z	32	SUNCOR ENERGY (U.S.A.) INC.	Commerce City CO	0182513202001	0.627 (27,296)		0.024 (1,067)	N/A N/A	N/A N/A		P/O Lot 1, Block 2, SUNCOR SUBDIVISION FILING NO. 1 Reception Number 201200007022, 1-31-2012

6/9/2015 11:41:13 AM K:\072120 Fastracks\NORTH METRO\dgn\ROWPlan_Sheets\NM-VR-PL003TAB.dgn

PRELIMINARY

Exhibit C
Page 3 of 10

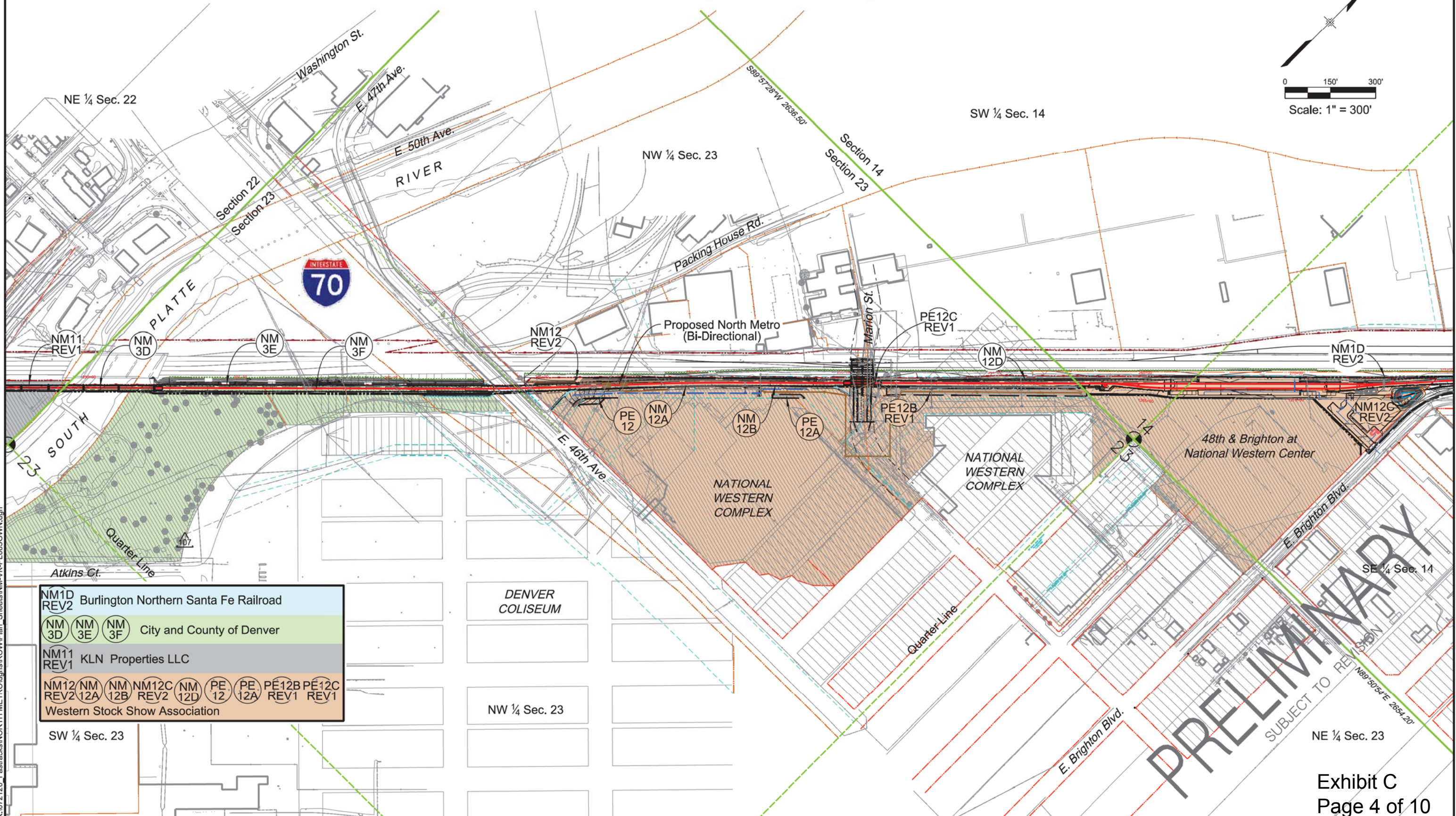
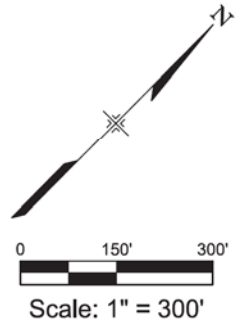
Sheet Revisions		
Date	Description	Initials
04-03-13	Revised Parcel NM-11	JSX
06-27-13	Released for RFP	SOO
07-16-13	Revised Parcel NM-12C & PE-12B	JSX
07-26-13	Revised NM-12	SOO
08-08-13	Added Parcels NM-3D, NM-3E & NM-3F	JSX
12-13-13	NTP	MAH
04-23-14	Update	MAH

Sheet Revisions		
Date	Description	Initials
10-22-14	Revised Parcel NM-12C-REV1	KRW
12-15-14	Added Labels for Parcel NM-1D	MAH
01-08-15	Revised Parcel NM-1D	MAH
01-26-15	Revised Parcel NM-1D-REV1	MAH
05-08-15	Revised Parcel NM-12-REV1	BPB
05-08-15	Added Parcels NM-12D & PE-12C	BPB
06-04-15	Revised Parcel PE-12C	BPB

Sheet Revisions		
Date	Description	Initials

Right of Way Plans				
Ownership Sheet				
Project Number: 70018				
Project Location: RTD Fastracks North Metro Rail Line				
Project Location: Phase I, Segment I & Segment II				
Project Code:	Last Mod. Date:	Subset Sheets:	Sheet No.:	Total No. of Sheets:
	06-04-15		151	172

Sections 14, 22 & 23, Township 3 South, Range 68 West, 6th P.M.



NM1D REV2	Burlington Northern Santa Fe Railroad
NM 3D, NM 3E, NM 3F	City and County of Denver
NM11 REV1	KLN Properties LLC
NM12 REV2, NM 12A, NM 12B, NM 12C REV2, NM 12D, PE 12, PE 12A, PE12B REV1, PE12C REV1	Western Stock Show Association

6/8/2015 10:07:48 AM K:\072120_Fastracks\NORTH METRO\Drawings\ROW\Plan_Sheets\NM-VR-PL003\OWN.dgn

Sheet Revisions		
Date	Description	Initials
06-27-13	Released for RFP	SOO
07-26-13	Revised NM-12	SOO
08-08-13	Added Parcel NM-3F	JSX
12-13-13	Added Range Line Information	MAH
12-13-13	NTP	MAH
04-23-14	Update	MAH
05-08-15	Revised Parcel NM-12-REV1	BPB

Sheet Revisions		
Date	Description	Initials

Sheet Revisions		
Date	Description	Initials

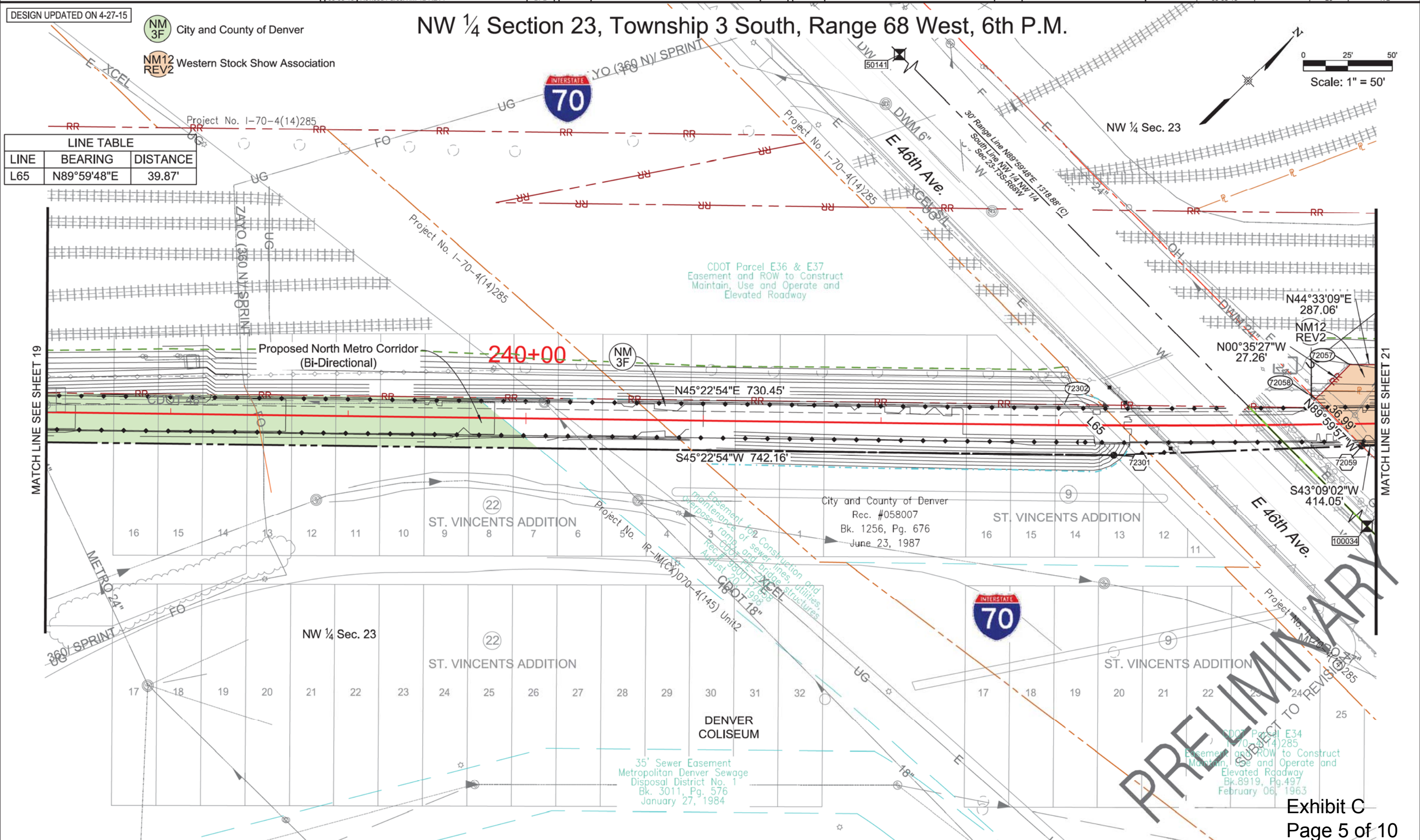
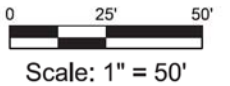
Right of Way Plans				
Plan Sheets				
Project Number: 70018				
Project Location: RTD Fastracks North Metro Rail Line				
Project Location: Phase I, Segment II				
Project Code	Last Mod. Date	Subset Sheets	Sheet No.	Total No. of Sheets
	05-08-15		20	172

NW 1/4 Section 23, Township 3 South, Range 68 West, 6th P.M.

DESIGN UPDATED ON 4-27-15

- NM 3F City and County of Denver
- NM12 REV2 Western Stock Show Association

LINE TABLE		
LINE	BEARING	DISTANCE
L65	N89°59'48"E	39.87'



MATCH LINE SEE SHEET 19

MATCH LINE SEE SHEET 21

5/13/2015 10:54:02 AM K:\072120_Fastracks\NORTH METRO\dgn\Plan_Sheets\NM-VR-PL014.PLN.dgn

Sheet Revisions		
Date	Description	Initials
06-27-13	Released for RFP	SOO
07-26-13	Revised NM-12	SOO
12-13-13	Added Range Line Information	MAH
12-13-13	NTP	MAH
04-23-14	Update	MAH
05-08-15	Revised Parcel NM-12-REV1	BPB

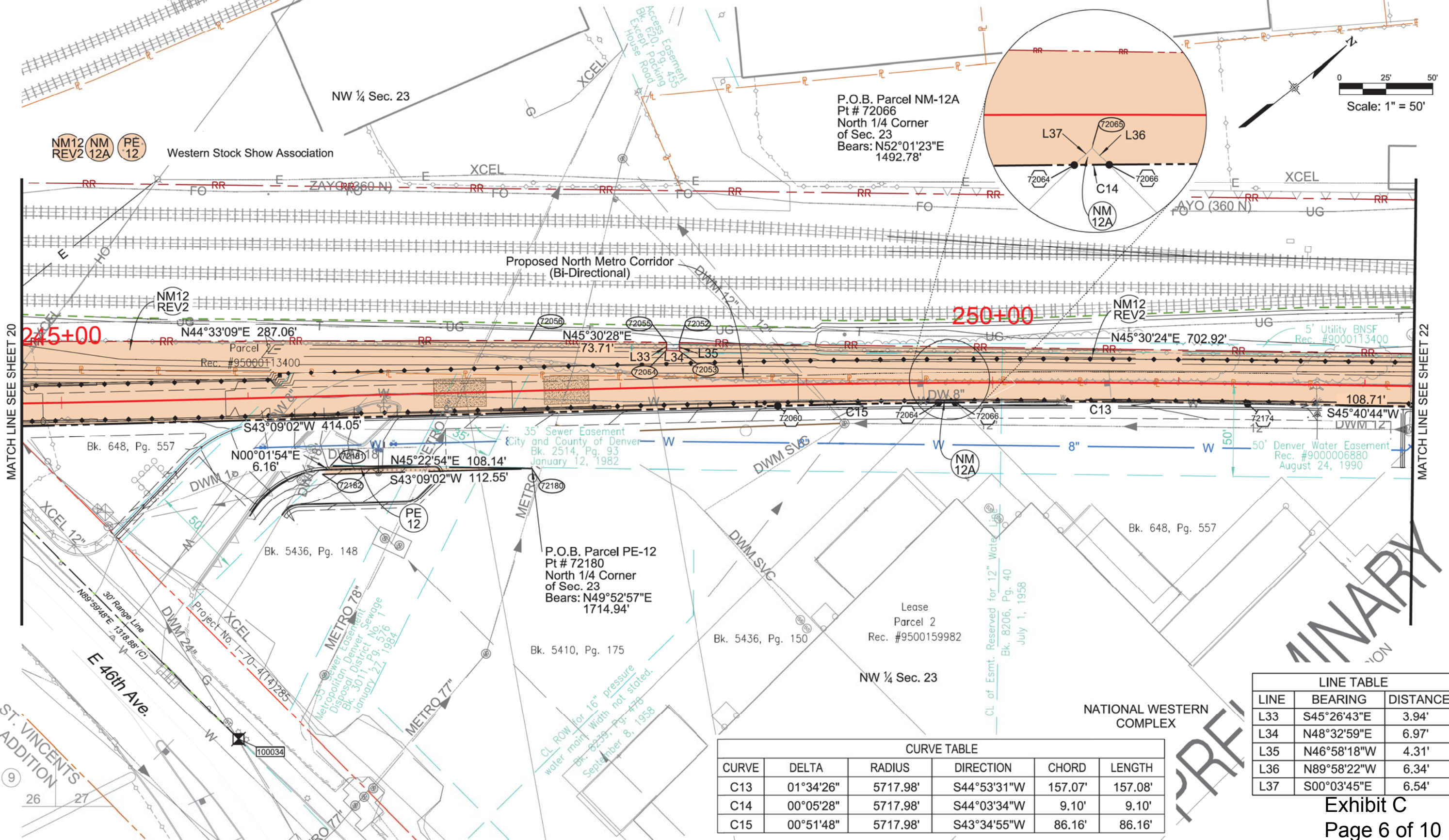
Sheet Revisions		
Date	Description	Initials

Sheet Revisions		
Date	Description	Initials

Right of Way Plans				
Plan Sheets				
Project Number: 70018				
Project Location: RTD Fastracks North Metro Rail Line				
Project Location: Phase I, Segment II				
Project Code:	Last Mod. Date:	Subset Sheets:	Sheet No.:	Total No. of Sheets:
	05-08-15		21	172

DESIGN UPDATED ON 4-27-15

NW 1/4 Section 23, Township 3 South, Range 68 West, 6th P.M.



CURVE	DELTA	RADIUS	DIRECTION	CHORD	LENGTH
C13	01°34'26"	5717.98'	S44°53'31"W	157.07'	157.08'
C14	00°05'28"	5717.98'	S44°03'34"W	9.10'	9.10'
C15	00°51'48"	5717.98'	S43°34'55"W	86.16'	86.16'

LINE	BEARING	DISTANCE
L33	S45°26'43"E	3.94'
L34	N48°32'59"E	6.97'
L35	N46°58'18"W	4.31'
L36	N89°58'22"W	6.34'
L37	S00°03'45"E	6.54'

5/18/2015 4:30:24 PM K:\072120_Fastracks\NORTH_METRO\dgn\ROWPlan_Sheets\NM-VR-PL015\PLN.dgn

Sheet Revisions		
Date	Description	Initials
06-27-13	Released for RFP	SOO
07-16-13	Revised PE-12B	JSX
07-26-13	Revised NM-12	SOO
12-13-13	NTP	MAH
04-23-14	Update	MAH
05-08-15	Revised Parcel NM-12-REV1	BPB
05-08-15	Added Parcels NM-12D & PE-12C	BPB

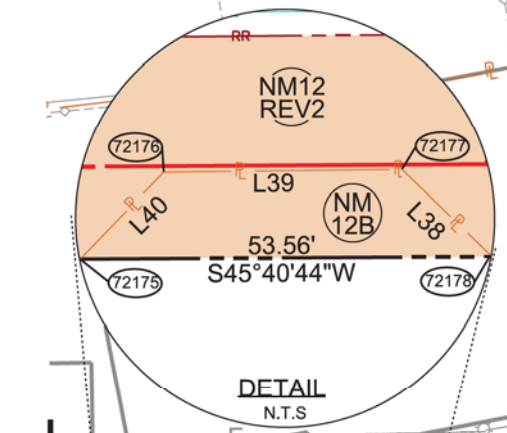
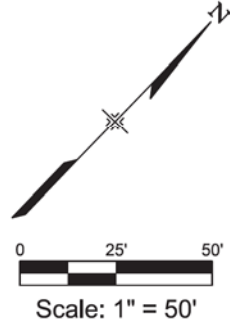
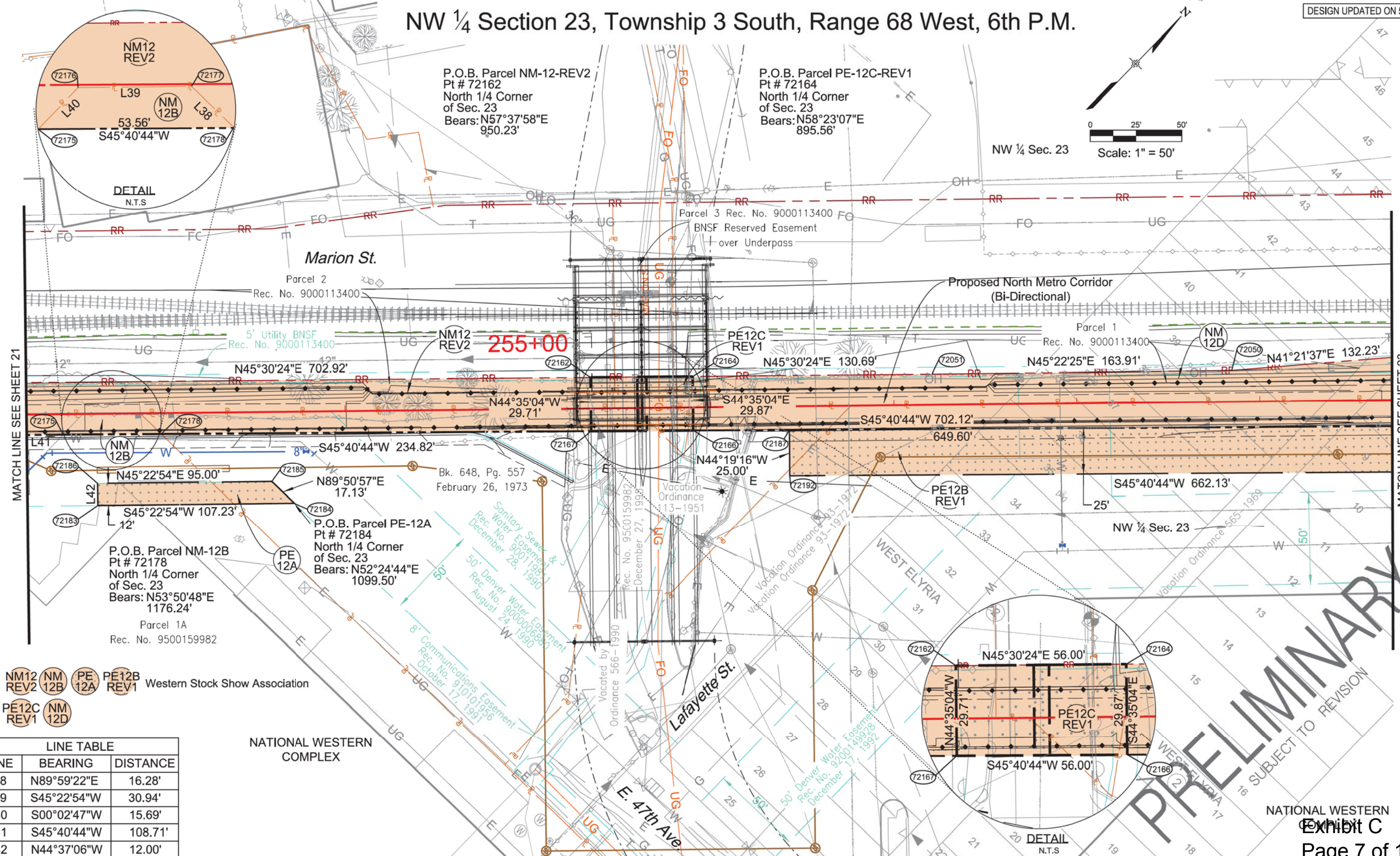
Sheet Revisions		
Date	Description	Initials
06-04-15	Revised Parcel PE-12C	BPB

Sheet Revisions		
Date	Description	Initials

Right of Way Plans				
Plan Sheets				
Project Number: 70018				
Project Location: RTD Fastracks North Metro Rail Line				
Project Location: Phase I, Segment II				
Project Code	Last Mod. Date	Subset Sheets	Sheet No.	Total No. of Sheets
	06-04-15		22	172

NW 1/4 Section 23, Township 3 South, Range 68 West, 6th P.M.

DESIGN UPDATED ON 5-27-15



DETAIL
N.T.S.

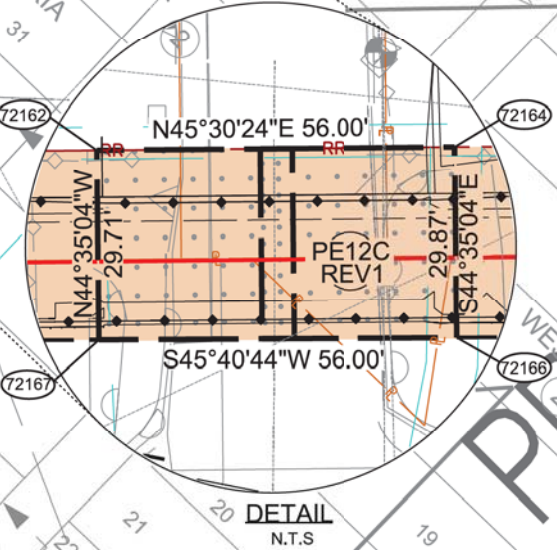
MATCH LINE SEE SHEET 21

MATCH LINE SEE SHEET 23

- NM12 REV2
 - NM12B
 - PE12A
 - PE12B REV1
 - PE12C REV1
 - NM12D
- Western Stock Show Association

LINE TABLE		
LINE	BEARING	DISTANCE
L38	N89°59'22"E	16.28'
L39	S45°22'54"W	30.94'
L40	S00°02'47"W	15.69'
L41	S45°40'44"W	108.71'
L42	N44°37'06"W	12.00'

NATIONAL WESTERN
COMPLEX



DETAIL
N.T.S.

PRELIMINARY

SUBJECT TO REVISION

6/8/2015 10:30:24 AM K:\072120_Fastracks\NORTH METRO\dgn\Plan_Sheets\NM-VR-PL016\PLN.dgn

Sheet Revisions		
Date	Description	Initials
06-27-13	Released for RFP	SOO
07-16-13	Revised NM-12C & PE-12B	JSX
07-26-13	Revised NM-12	SOO
12-13-13	NTP	MAH
04-23-14	Update	MAH
10-22-14	Revised Parcel NM-12C-REV1	KRW
05-08-15	Added Parcel NM-12D	BPB

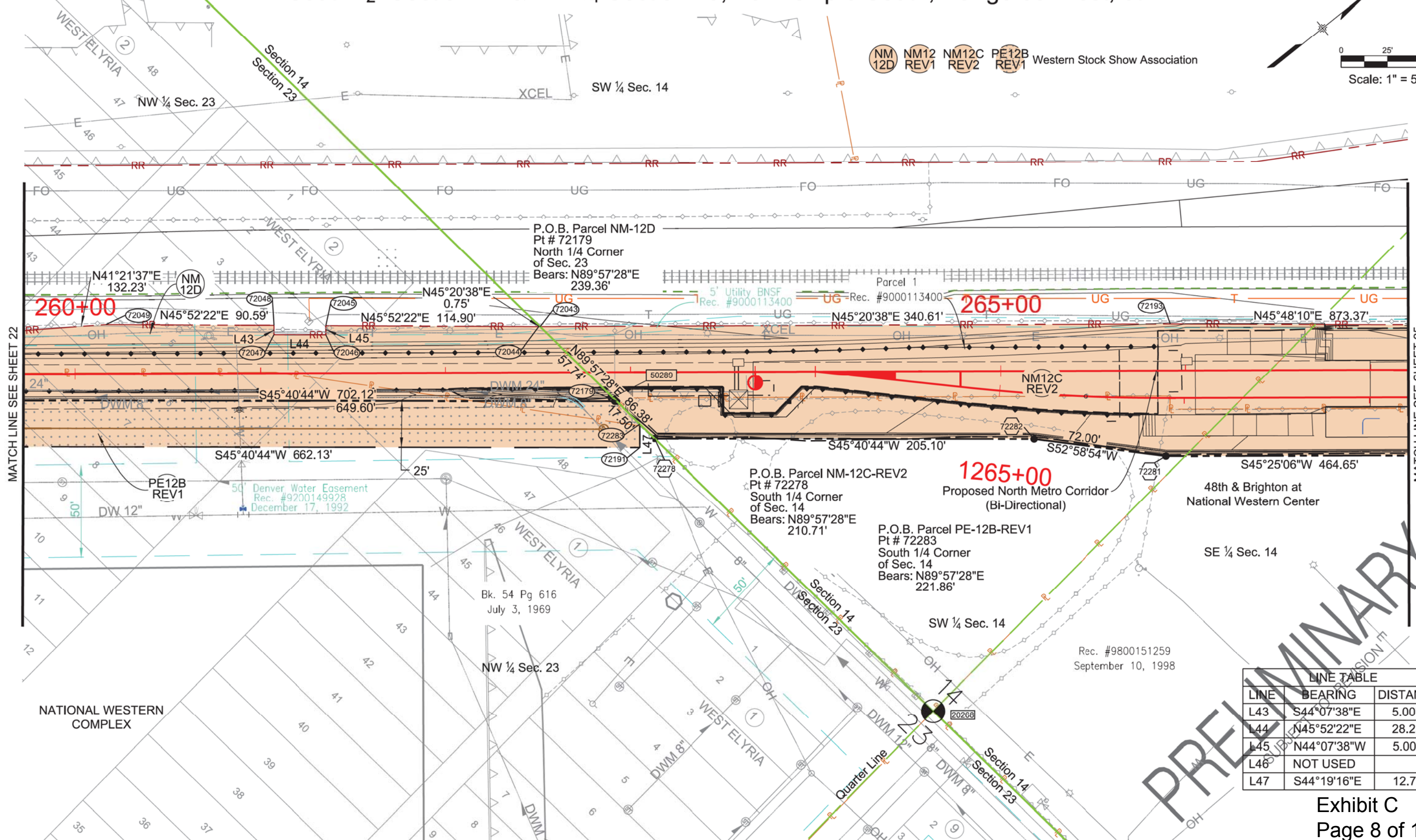
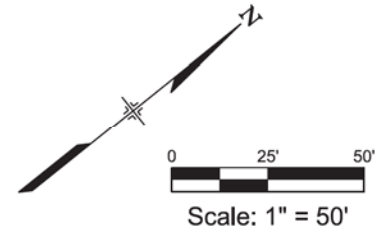
Sheet Revisions		
Date	Description	Initials

Sheet Revisions		
Date	Description	Initials

Right of Way Plans				
Plan Sheets				
Project Number: 70018				
Project Location: RTD Fastracks North Metro Rail Line				
Project Location: Phase I, Segment II				
Project Code	Last Mod. Date	Subset Sheets	Sheet No.	Total No. of Sheets
	05-08-15		23	172

South 1/2 Section 14 & NW 1/4 Section 23, Township 3 South, Range 68 West, 6th P.M.

DESIGN UPDATED ON 4-27-15



MATCH LINE SEE SHEET 22

MATCH LINE SEE SHEET 25

LINE TABLE		
LINE	BEARING	DISTANCE
L43	S44°07'38"E	5.00'
L44	N45°52'22"E	28.23'
L45	N44°07'38"W	5.00'
L46	NOT USED	
L47	S44°19'16"E	12.78'

PRELIMINARY

5/18/2015 3:13:05 PM K:\072120_Fastracks\NORTH METRO\dgn\ROWPlan_Sheets\NM-VR-PL017.PLN.dgn

Sheet Revisions		
Date	Description	Initials
06-27-13	Released for RFP	SOO
07-16-13	Revised NM-12C & PE-12B	JSX
07-26-13	Revised NM-12	JSX
12-13-13	Added Range Line Information	MAH
12-13-13	NTP	MAH
04-23-14	Update	MAH
10-22-14	Revised Parcel NM-12C-REV1	KRW

Sheet Revisions		
Date	Description	Initials
12-15-14	Added Labels for Parcel NM-1D	MAH
01-08-15	Revised Parcel NM-1D	MAH
01-26-15	Revised Parcel NM-1D-REV1	MAH
05-08-15	Added Parcel NM-12D	BPB

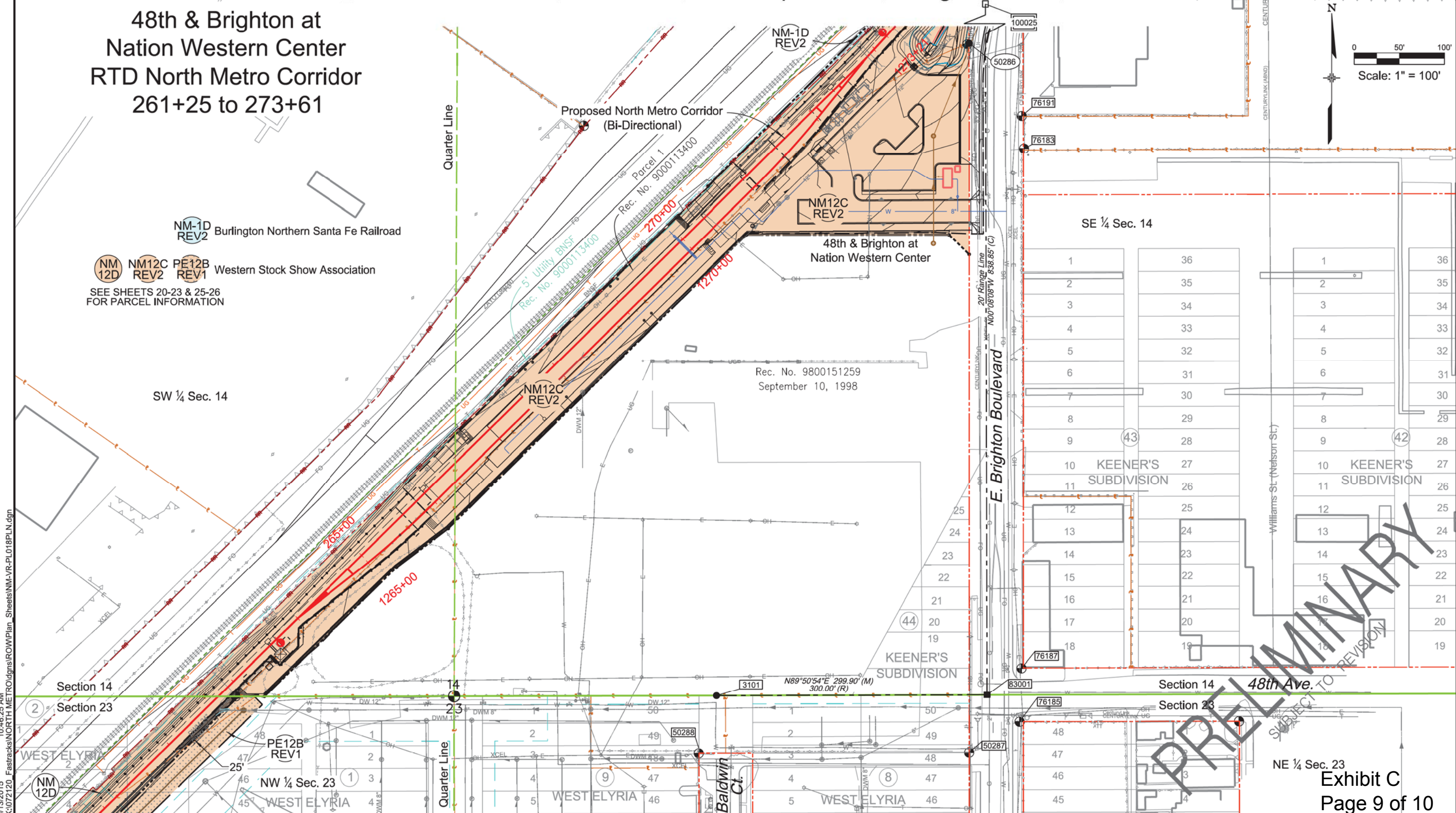
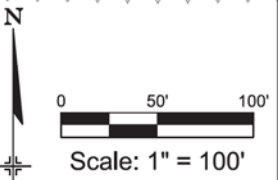
Sheet Revisions		
Date	Description	Initials

Right of Way Plans				
Plan Sheets				
Project Number: 70018				
Project Location: RTD Fastracks North Metro Rail Line				
Project Location: Phase I, Segment I				
Project Code	Last Mod. Date	Subset Sheets	Sheet No.	Total No. of Sheets
	05-08-15		24	172

DESIGN UPDATED ON 4-27-15

S 1/2 Section 14 & NW 1/4 Section 23, Township 3 South, Range 68 West, 6th P.M.

48th & Brighton at
Nation Western Center
RTD North Metro Corridor
261+25 to 273+61



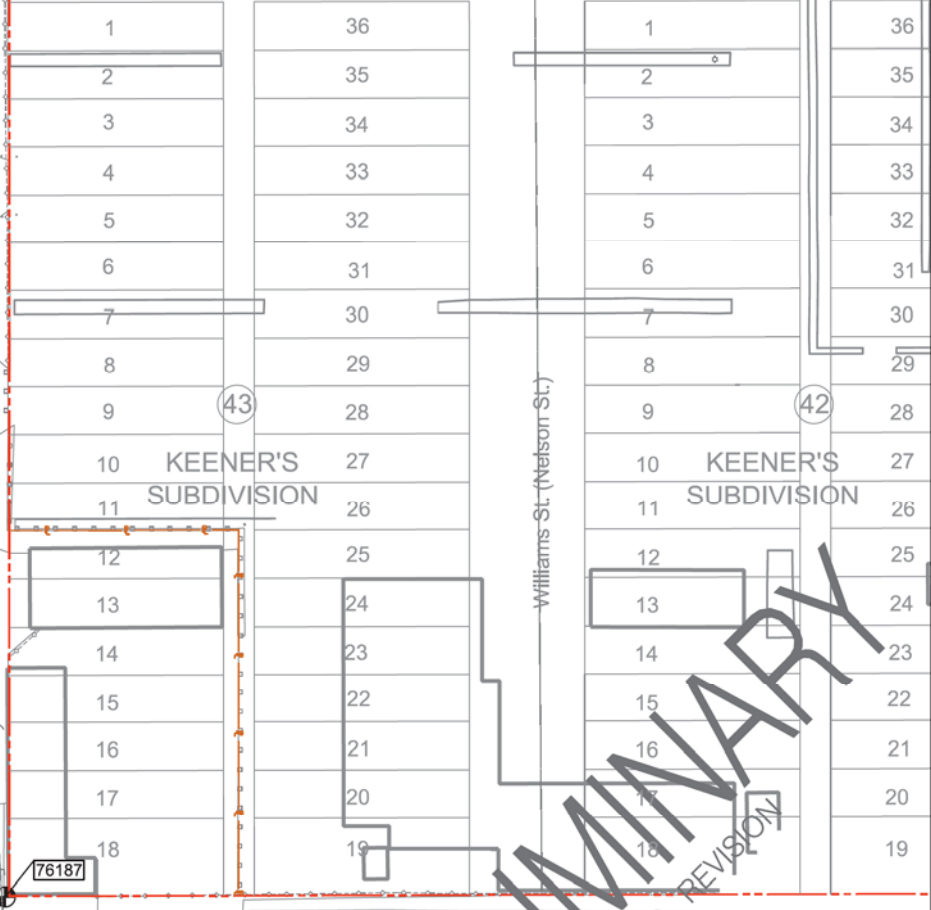
NM-1D REV2 Burlington Northern Santa Fe Railroad

NM 12D, NM12C REV2, PE12B REV1 Western Stock Show Association
SEE SHEETS 20-23 & 25-26 FOR PARCEL INFORMATION

Rec. No. 9800151259
September 10, 1998

SE 1/4 Sec. 14

SW 1/4 Sec. 14



PRELIMINARY
SUBJECT TO REVISION

5/13/2015 10:46:25 AM K:\072120_Fastracks\NORTH METRO\dgn\ROWPlan_Sheets\NM-VR-PL018\PLN.dgn

Sheet Revisions		
Date	Description	Initials
06-27-13	Released for RFP	SOO
07-16-13	Revised NM-12C	JSX
12-13-13	Added Range Line Information	MAH
12-13-13	NTP	MAH
04-23-14	Update	MAH
10-22-14	Revised Parcel NM-12C-REV1	KRW
12-15-14	Added Labels for Parcel NM-1D	MAH

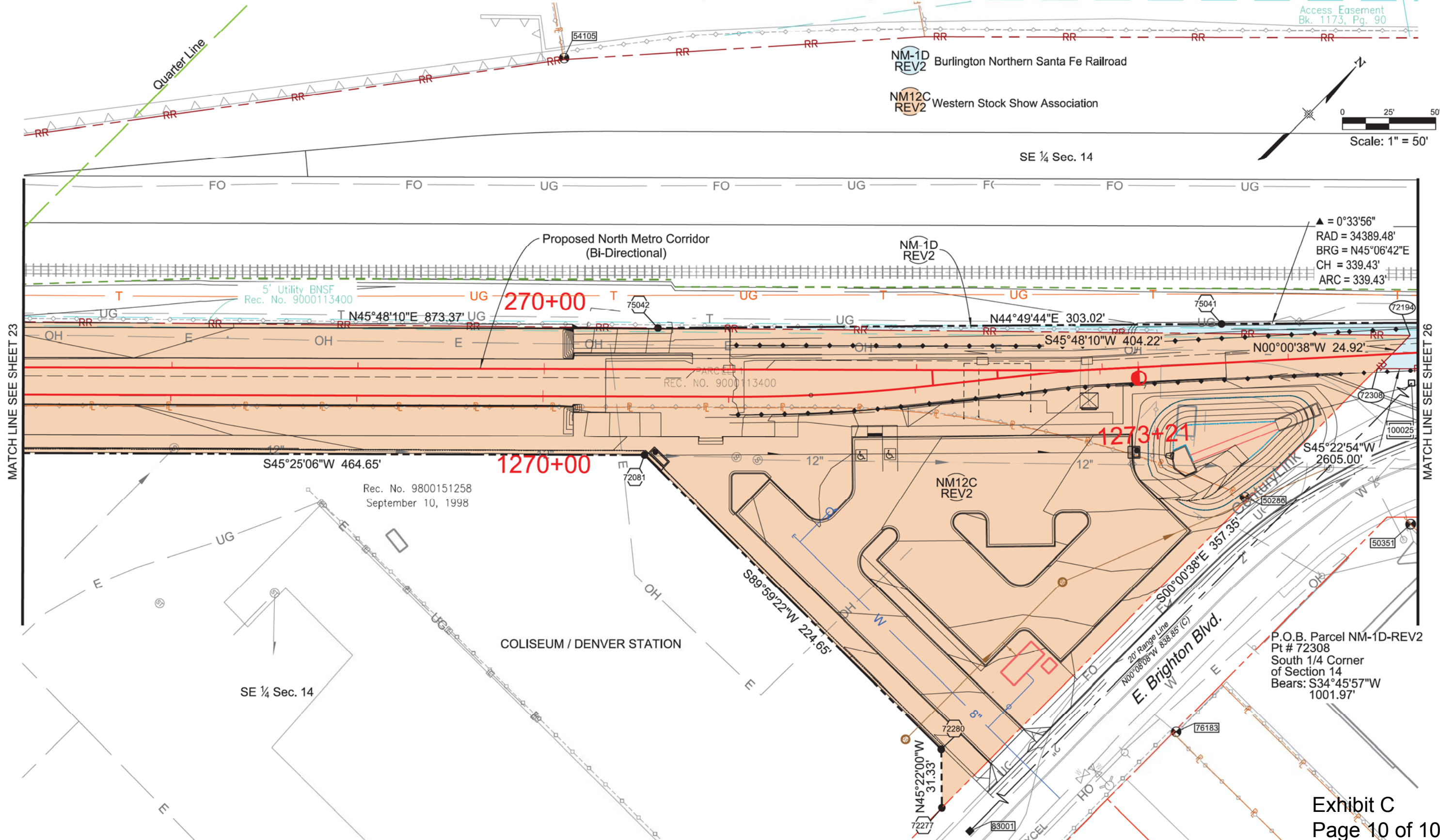
Sheet Revisions		
Date	Description	Initials
01-08-15	Revised Parcel NM-1D	MAH
01-26-15	Revised Parcel NM-1D-REV1	MAH

Sheet Revisions		
Date	Description	Initials

Right of Way Plans				
Plan Sheets				
Project Number: 70018				
Project Location: RTD Fastracks North Metro Rail Line				
Project Location: Phase I, Segment I				
Project Code	Last Mod. Date	Subset Sheets	Sheet No.	Total No. of Sheets
	01-26-15		25	172

DESIGN UPDATED ON 12-17-14

SE 1/4 Section 14, Township 3 South, Range 68 West, 6th P.M.



1/27/2015 4:06:06 PM K:\072120_Fastracks\NORTH METRO\dgn\ROWPlan_Sheets\NM-VR-PL019PLN.dgn