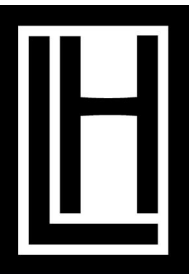
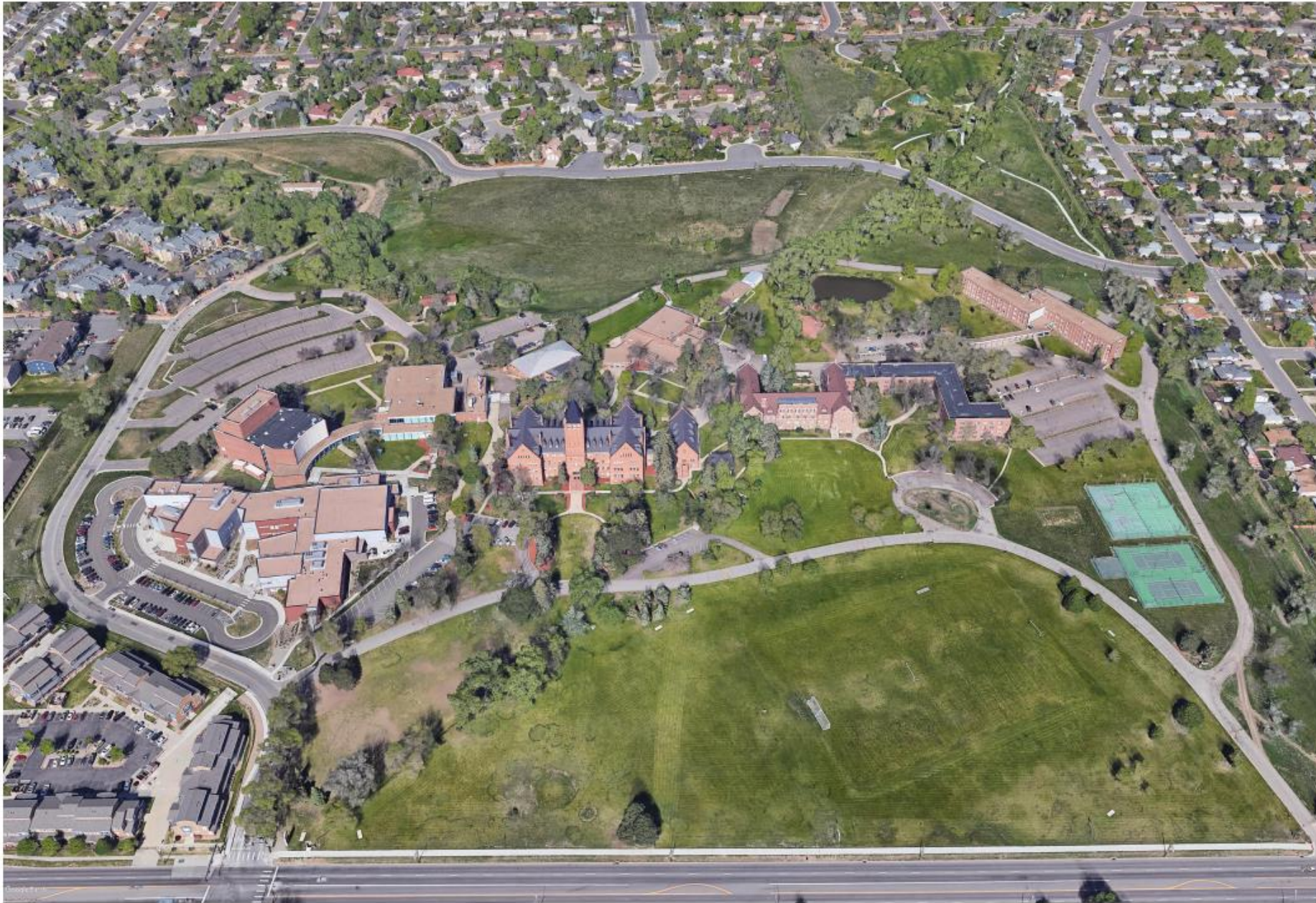


Loretto Heights Metropolitan Districts



View Looking West



MULTIPLE-DISTRICT STRUCTURE

One (1) Coordinating District, Loretto Heights Metropolitan District No. 1

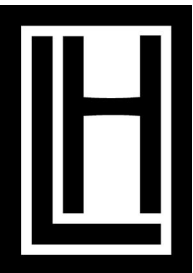
- Will coordinate and manage the financing, acquisition, construction, completion, operation, and maintenance of all public improvements and services throughout the project area.

Four (4) Development Districts, Loretto Heights Metropolitan District Nos. 2-5

- To coordinate with the Coordinating District in providing revenue to be applied to the payment of: (i) the acquisition, construction, and financing of the public improvements; and (ii) the cost of administration, operation, and maintenance of the public improvements constructed, owned, operated, and/or maintained by the Coordinating District.
- Boundaries defined to coincide with phasing of development to include common uses and tax bases.

One (1) Programming District, Loretto Heights Programming Metropolitan District

- Overlays entire project area to assist in contributing to the financing, development, operation, and maintenance of project-wide community assets, including arts programming, infrastructure related to the Theater, sustainability initiatives, and public spaces.



COMMUNITY ASSETS

- Inclusion of Community Assets for public use is a significant driver of the costs of development and maintenance of the Project.
 - Theater - \$22,000,000
 - Library/Machbeuf Hall – \$10,600,000
 - Public Parking – \$7,600,000*
 - Administration Building – \$12,700,000

*Theater feasibility dependent upon expansion of on-site parking availability

