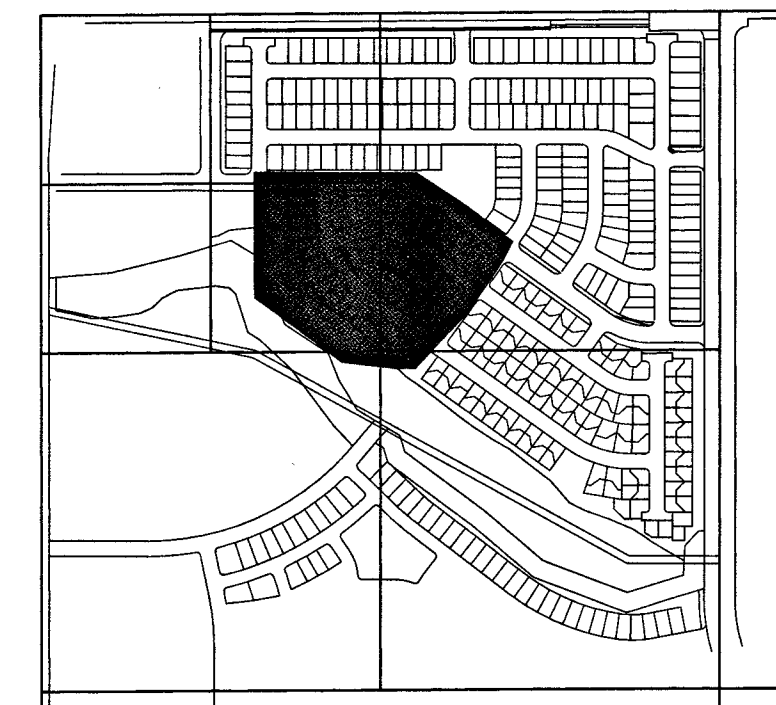


GREEN VALLEY RANCH FILING NO. 62

A RESUBDIVISION OF A PART OF LOT 1, MOFFITT TRACT AND A PART OF THE NORTHWEST QUARTER OF SECTION 15,
TOWNSHIP 3 SOUTH, RANGE 66 WEST OF THE SIXTH PRINCIPAL MERIDIAN,
CITY AND COUNTY OF DENVER, STATE OF COLORADO.

SHEET 5 OF 11

(SEE SHEET 3)



KEY MAP
NOT TO SCALE

UTILITY LEGEND

- (A) 5' UTILITY EASEMENT GRANTED BY THIS PLAT
- (B) 8' UTILITY EASEMENT GRANTED BY THIS PLAT
- (C) ACCESS AND UTILITY EASEMENT GRANTED BY THIS PLAT
- (D) 5' SIDEWALK EASEMENT GRANTED BY THIS PLAT

(SEE SHEET 6)

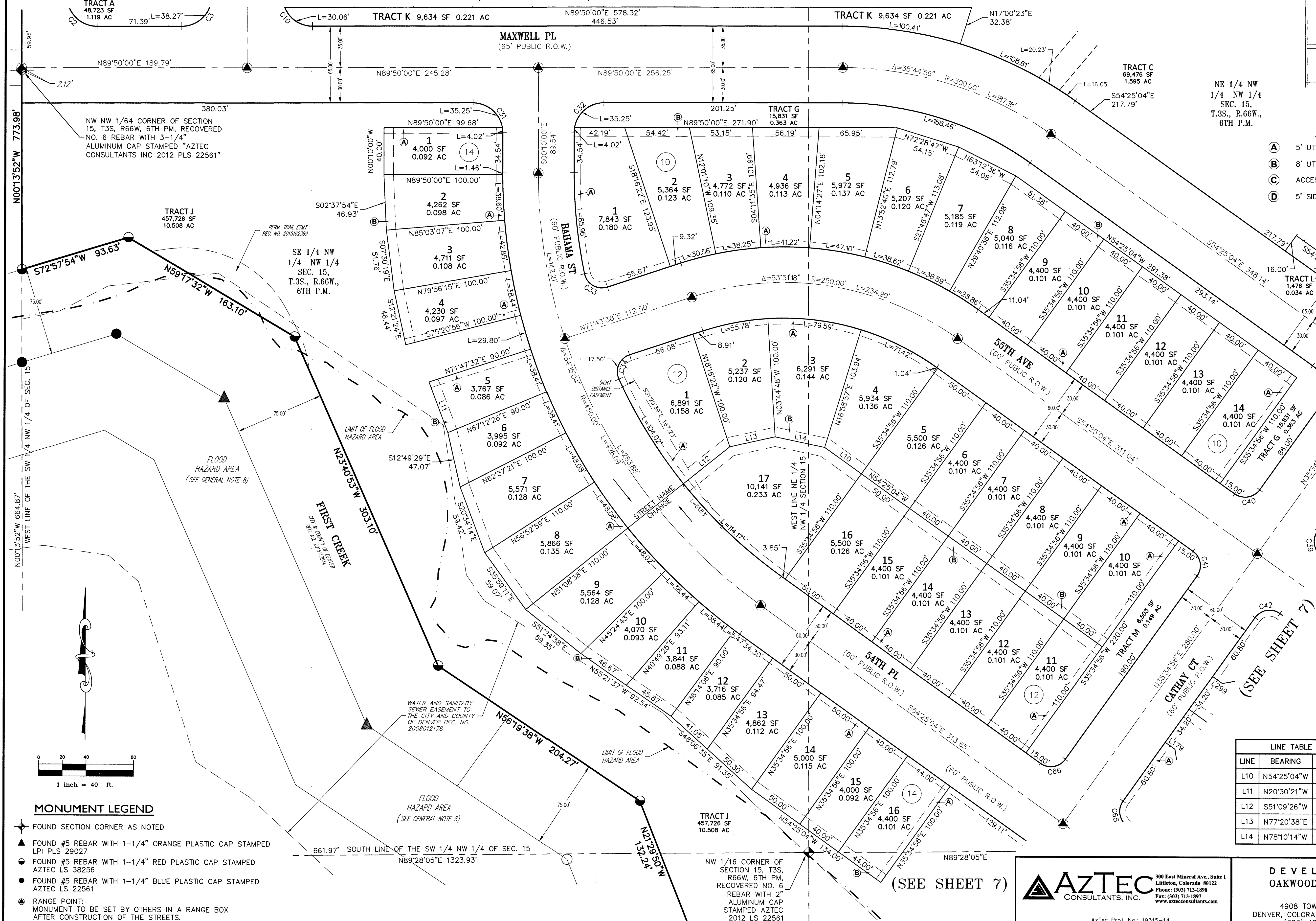


FOR AND ON BEHALF OF
AZTEC CONSULTANTS, INC.

CURVE	DELTA	RADIUS	LENGTH
C31	90°00'00"	25.00'	39.27'
C32	90°00'00"	25.00'	39.27'
C33	96°22'46"	15.00'	25.23'
C34	96°22'46"	15.00'	25.23'
C35	90°00'00"	25.00'	39.27'
C38	90°00'00"	25.00'	39.27'
C39	90°00'00"	15.00'	23.56'
C40	90°00'00"	15.00'	23.56'
C41	90°00'00"	15.00'	23.56'
C42	90°00'00"	15.00'	23.56'
C65	90°00'00"	15.00'	23.56'
C66	90°00'00"	15.00'	23.56'
C67	68°53'59"	25.00'	30.06'
C70	73°58'44"	25.00'	32.28'
C71	16°01'16"	25.00'	6.99'

LINE	BEARING	LENGTH
L10	N54°25'04"W	38.06'
L11	N20°30'21"W	45.60'
L12	S51°09'26"W	50.00'
L13	N77°20'38"E	39.19'
L14	N78°10'14"W	42.65'

(SEE SHEET 7)



TRACT A
46,723 SF
1.119 AC
71.39' L=38.27'

NW NW 1/4 CORNER OF SECTION 15, T3S, R66W, 6TH PM, RECOVERED NO. 6 REBAR WITH 3-1/4" ALUMINUM CAP STAMPED "AZTEC CONSULTANTS INC 2012 PLS 22561"

TRACT K 9,634 SF 0.221 AC
N89°50'00"E 578.32' 446.53'

MAXWELL PL
(65' PUBLIC R.O.W.)

TRACT C
69,476 SF
1.595 AC
N17°00'23"E 32.38'

NE 1/4 NW 1/4 NW 1/4 SEC. 15, T.3S., R.66W., 6TH P.M.

TRACT J
457,726 SF
10.508 AC
S72°57'54"W 93.63'

SE 1/4 NW 1/4 NW 1/4 SEC. 15, T.3S., R.66W., 6TH P.M.

TRACT G
15,831 SF
0.363 AC
N89°50'00"E 271.90'

TRACT I
14,767 SF
0.334 AC
S54°25'04"E 98.67'

TRACT H
14,767 SF
0.334 AC
S54°25'04"E 98.67'

TRACT M
8,903 SF
0.204 AC
S35°34'56"W 110.00'

TRACT N
8,903 SF
0.204 AC
S35°34'56"W 110.00'

TRACT O
8,903 SF
0.204 AC
S35°34'56"W 110.00'

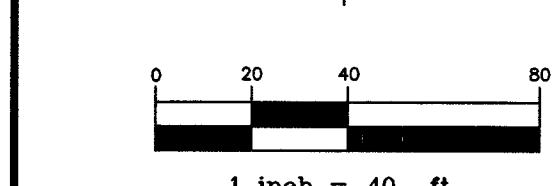
TRACT P
8,903 SF
0.204 AC
S35°34'56"W 110.00'

TRACT Q
8,903 SF
0.204 AC
S35°34'56"W 110.00'

TRACT R
8,903 SF
0.204 AC
S35°34'56"W 110.00'

MONUMENT LEGEND

- ◆ FOUND SECTION CORNER AS NOTED
- ▲ FOUND #5 REBAR WITH 1-1/4" ORANGE PLASTIC CAP STAMPED LPI PLS 29027
- FOUND #5 REBAR WITH 1-1/4" RED PLASTIC CAP STAMPED AZTEC LS 38256
- FOUND #5 REBAR WITH 1-1/4" BLUE PLASTIC CAP STAMPED AZTEC LS 22561
- ▲ RANGE POINT: MONUMENT TO BE SET BY OTHERS IN A RANGE BOX AFTER CONSTRUCTION OF THE STREETS.



AZTEC
CONSULTANTS, INC.
300 East Mineral Ave., Suite 1
Littleton, Colorado 80122
Phone: (303) 713-1898
Fax: (303) 713-1897
www.aztecconsultants.com

DEVELOPER
OAKWOOD HOMES
4908 TOWER ROAD
DENVER, COLORADO 80249-6684
(303) 486-8500

DATE OF PREPARATION:	2015-06-17
SCALE:	1" = 40'
SHEET 5 OF 11	