

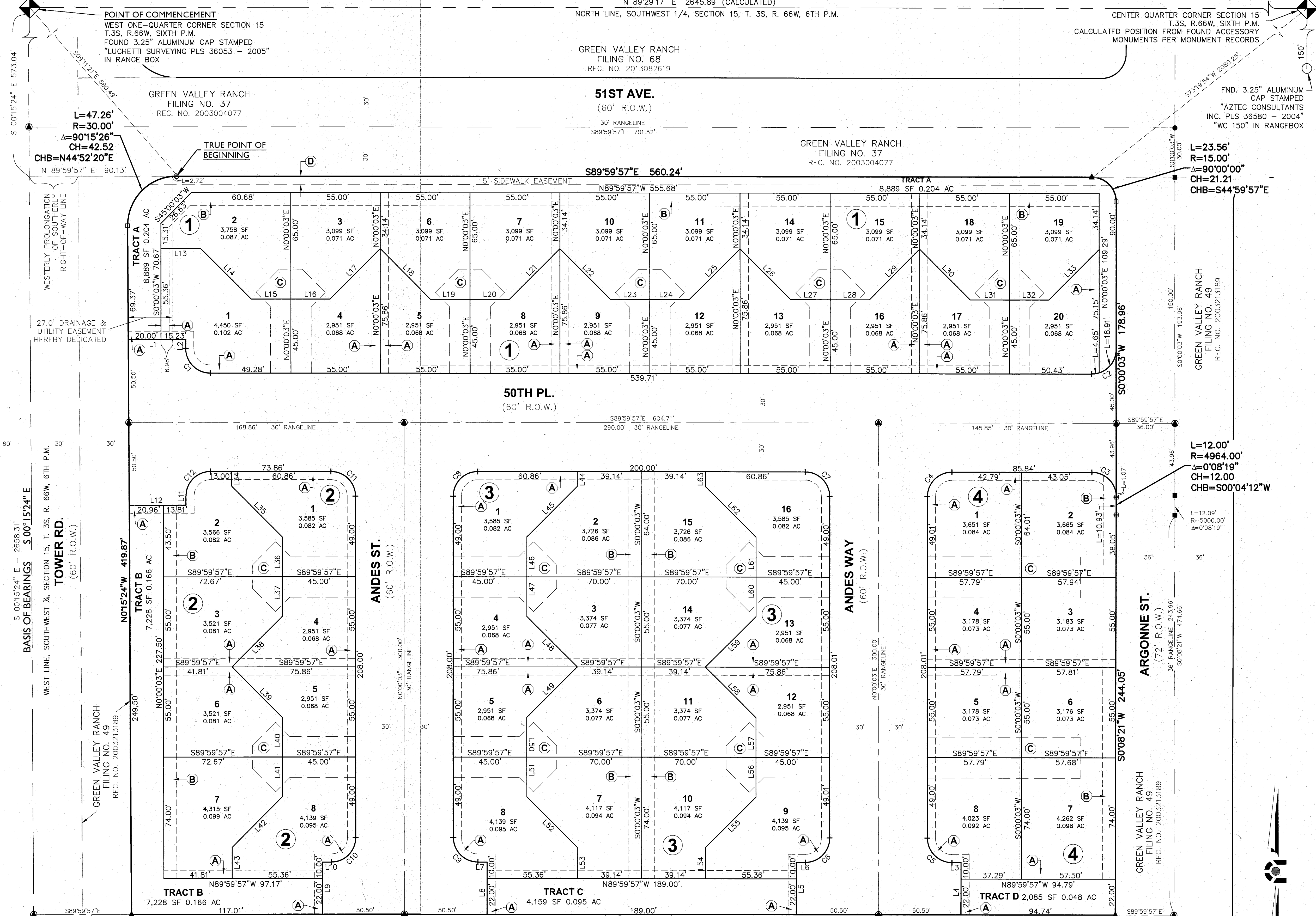
# GREEN VALLEY RANCH FILING NO. 69

A PART OF THE SOUTHWEST ONE-QUARTER OF SECTION 15, TOWNSHIP 3 SOUTH, RANGE 66 WEST OF THE SIXTH PRINCIPAL MERIDIAN,  
CITY AND COUNTY OF DENVER, STATE OF COLORADO

N 89°29'17" E 2645.89' (CALCULATED)  
NORTH LINE, SOUTHWEST 1/4, SECTION 15, T. 3S, R. 66W, 6TH P.M.

GREEN VALLEY RANCH  
FILING NO. 68  
REC. NO. 2013082619

CENTER QUARTER CORNER SECTION 15  
T.3S, R.66W, SIXTH P.M.  
CALCULATED POSITION FROM FOUND ACCESSORY  
MONUMENTS PER MONUMENT RECORDS



**POINT OF COMMENCEMENT**  
WEST ONE-QUARTER CORNER SECTION 15  
T.3S, R.66W, SIXTH P.M.  
FOUND 3.25" ALUMINUM CAP STAMPED  
"LUCHETTI SURVEYING PLS 36053 - 2005"  
IN RANGE BOX

**TRUE POINT OF BEGINNING**

**WESTERLY PROLONGATION OF SOUTHERLY RIGHT-OF-WAY LINE**

**27.0' DRAINAGE & UTILITY EASEMENT HEREBY DEDICATED**

**FOUNDATION**  
L=47.26'  
R=30.00'  
Δ=90°15'26"  
CH=42.52  
CHB=N44°52'20"E

**FOUNDATION**  
L=2.72'  
R=15.00'  
Δ=90°00'00"  
CH=21.21  
CHB=S44°59'57"E

**FOUNDATION**  
L=12.00'  
R=4964.00'  
Δ=0°08'19"  
CH=12.00  
CHB=S00°04'12"W

**FOUNDATION**  
L=23.56'  
R=15.00'  
Δ=90°00'00"  
CH=21.21  
CHB=S44°59'57"E

**FOUNDATION**  
L=12.09'  
R=5000.00'  
Δ=0°08'19"

**FOUNDATION**  
L=10.93'  
R=5000.00'  
Δ=0°08'19"

**FOUNDATION**  
L=10.93'  
R=5000.00'  
Δ=0°08'19"

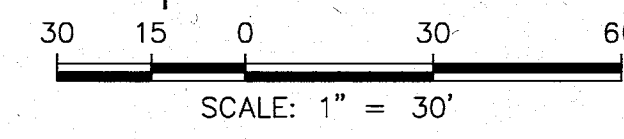
**FOUNDATION**  
L=10.93'  
R=5000.00'  
Δ=0°08'19"

**SOUTHWEST CORNER SECTION 15**  
T.3S, R.66W, SIXTH P.M.  
FOUND 3.25" ALUMINUM CAP STAMPED  
"LUCHETTI SURVEYING PLS 36053 - 2005"  
IN RANGE BOX

- LEGEND**
- ▲ SET REBAR & PLASTIC CAP STAMPED "PLS 38151"
  - RANGE POINT TO BE SET AFTER CONSTRUCTION
  - FOUND #5 REBAR WITH ALUM. CAP STAMPED "LPI PLS 29027" IN RANGEBOX
  - FOUND #5 REBAR WITH ORANGE PLASTIC CAP STAMPED "LPI PLS 29027"
  - FOUND #5 REBAR WITH ORANGE PLASTIC CAP STAMPED "AZTEC LS 17666"
  - FOUND #5 REBAR WITH NO CAP
  - ③ BLOCK NUMBER

- UTILITY LEGEND**
- (A) 5' UTILITY EASEMENT GRANTED BY THIS PLAT
  - (B) 8' UTILITY EASEMENT GRANTED BY THIS PLAT
  - (C) ACCESS AND UTILITY EASEMENT GRANTED BY THIS PLAT
  - (D) 5' SIDEWALK EASEMENT GRANTED BY THIS PLAT

LINE TABLE		
LINE #	LENGTH	DIRECTION
L1	35.23	S89°59'57"E
L2	5.50	S0°00'03"W
L3	5.50	S89°59'57"E
L4	32.00	S0°00'03"W
L5	32.00	N0°00'03"E
L6	5.50	S89°59'57"E
L7	5.50	S89°59'57"E
L8	32.00	S0°00'03"W
L9	32.00	N0°00'03"E
L10	5.50	S89°59'57"E
L11	5.50	S0°00'03"W
L12	34.77	N89°59'57"W
L13	24.51	N89°59'57"W
L14	43.64	N44°59'57"W
L15	24.14	S89°59'57"E
L16	24.14	N89°59'57"W
L17	43.64	S45°00'03"W
L18	43.64	N44°59'57"W
L19	24.14	S89°59'57"E
L20	24.14	N89°59'57"W
L21	43.64	S45°00'03"W
L22	43.64	N44°59'57"W
L23	24.14	S89°59'57"E
L24	24.14	N89°59'57"W
L25	43.64	S45°00'03"W
L26	43.64	N44°59'57"W
L27	24.14	S89°59'57"E
L28	24.14	N89°59'57"W
L29	43.64	S45°00'03"W
L30	43.64	N44°59'57"W
L31	24.14	S89°59'57"E
L32	24.14	N89°59'57"W
L33	43.64	S45°00'03"W
L34	9.00	N0°00'03"E
L35	43.64	S44°59'57"E
L36	24.14	S0°00'03"W
L37	24.14	N0°00'03"E
L38	43.65	S44°59'55"W
L39	43.64	S45°00'05"E
L40	24.14	S0°00'03"W
L41	24.14	N0°00'03"E
L42	43.64	S45°00'03"W
L43	19.00	S0°00'03"W
L44	9.00	N0°00'03"E
L45	43.64	N45°00'03"E
L46	24.14	S0°00'03"W
L47	24.14	N0°00'03"E
L48	43.64	N44°59'57"W
L49	43.64	N45°00'03"E
L50	24.14	S0°00'05"E
L51	24.14	N0°00'03"E
L52	43.64	N44°59'57"W
L53	19.00	S0°00'03"W
L54	19.00	S0°00'03"W
L55	43.64	S45°00'03"W
L56	24.14	N0°00'03"E
L57	24.14	S0°00'03"W
L58	43.64	S44°59'57"E
L59	43.64	S45°00'00"W
L60	24.14	N0°00'03"E
L61	24.14	S0°00'03"W
L62	43.64	S44°59'57"E
L63	9.00	N0°00'03"E



CIVIL ENGINEERING  
DEVELOPMENT CONSULTING  
LAND SURVEYING  
303.705.4444  
1950 W. Littleton Blvd., Ste. 109  
Littleton, CO 80120

## CORE CONSULTANTS

NO.	DESCRIPTION	DATE	BY
1	CITY & COUNTY COMMENTS	11/15/14	JCA
2	CITY & COUNTY COMMENTS	12/03/14	JCA

REVISIONS

GREEN VALLEY RANCH FILING NO. 69

JOB NO.  
14-028

SHEET  
2 OF 3

INITIAL PLAN  
RELEASE: 10/15/14  
DESIGNED BY: DF  
DRAWN BY: JCA  
CHECKED BY: TMG