



DENVER
THE MILE HIGH CITY

Denver Parks & Recreation

Proposed Park Designations
11th Round – Winter 2018

FOR CITY SERVICES VISIT | CALL
DenverGov.org | **311**

- Park System had its origin in 1858 with the cities of Auraria, Denver City and Highland at the confluence of the South Platte River and Cherry Creek
- First park was Curtis Park in 1868
- First Park Board was created in 1893
- The Park Board directed the management and development of the park system until about 1904
- Under Mayor Speer, a charter amendment in 1904 was adopted that created the Department of “Improvements and Parks”
- In 1910 the Mountain Park System was established
- In 1956 the Department of Parks and Recreation was created.
- Parcels that were acquired, developed or treated as a park at this time (1956) became designated under this charter amendment
- Subsequent park designations are accomplished through the City Council ordinance process

Designation Considerations

- Supports a master plan (City Park)
- Has historical, cultural, ecological, or educational significance (Civic Center, Cheesman)
- Preservation of key visual corridors or scenic vistas (Cranmer)
- Park facilities have been or are planned to be constructed (New Freedom, Cuatro Vientos)
- Area infrastructure / utilities are not in a state of flux that may impact or change the park (Hampden Heights Park)
- There are no title / ownership issues that cast a cloud on the City's title or right to possession of the park
- No pending or anticipated plans for making/expanding non-park uses within the park.

- Beginning of 2013
 - Approximately 68% of Parks were already designated
- 1st Round - April 2013
 - Approximately 180 acres became designated
 - Approximately 72% of system designated as parkland
- 2nd Round – January 2014
 - Approximately 275 acres became designated
 - Approximately 78% of system designated as parkland
- 3rd Round – April 2014
 - Approximately 164 acres became designated
 - Approximately 82% of system designated as parkland
- 4th and 5th Rounds – November 2014
 - Approximately 42 acres became designated
 - Approximately 84% of system designated as parkland

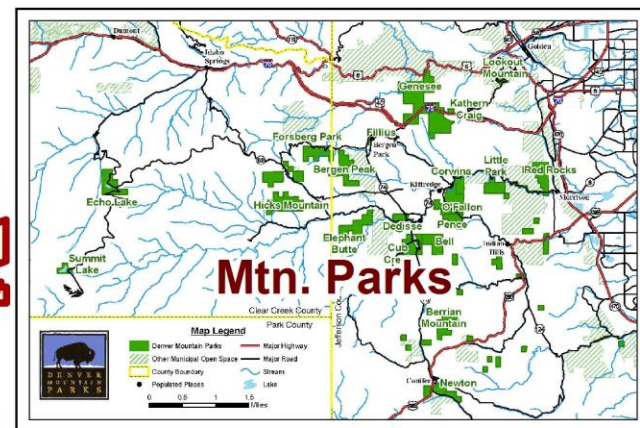
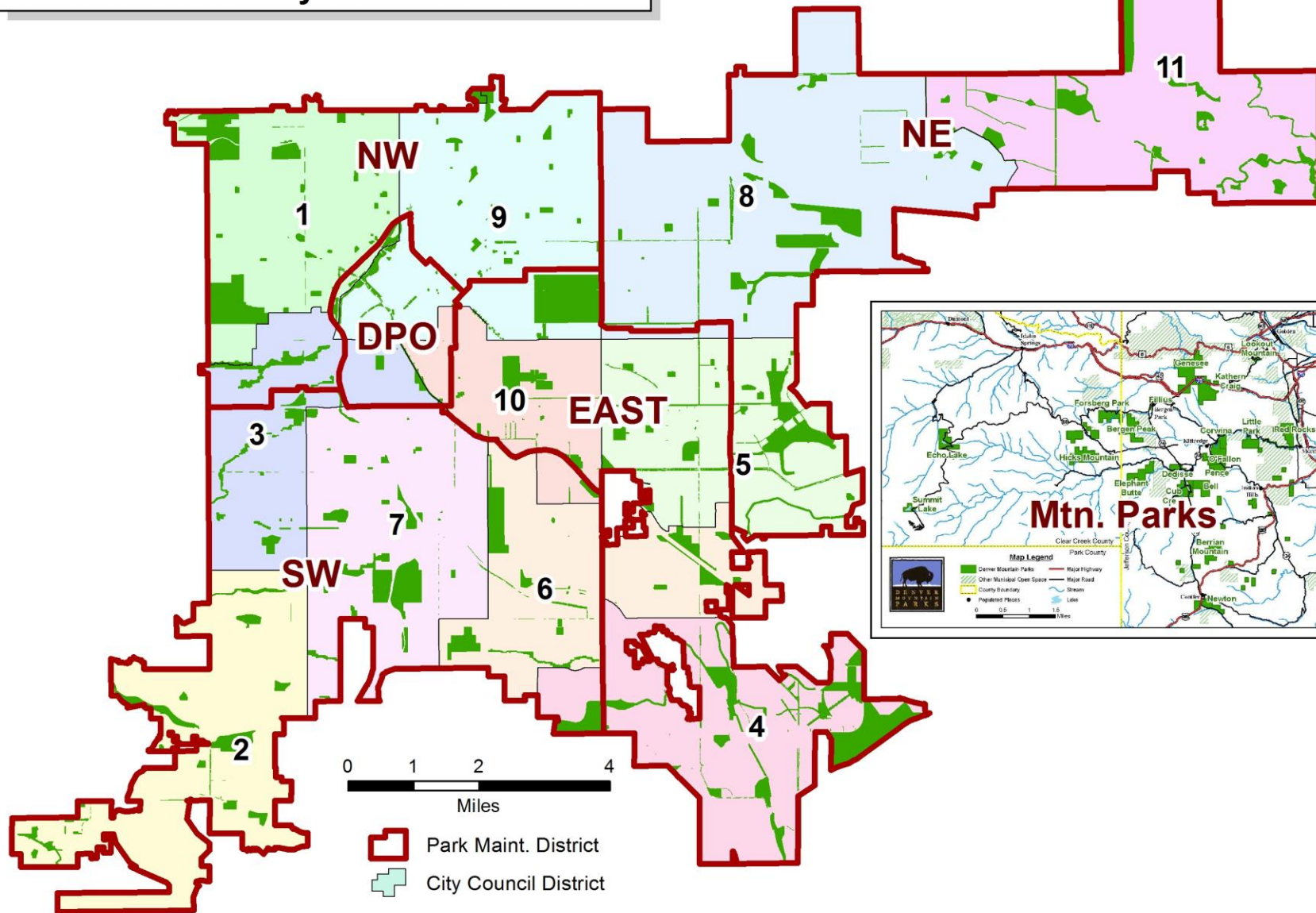
- 6th Round – Fall 2015
 - Approximately 88 acres became designated
 - Approximately 85% of system designated as parkland
- 7th Round – Spring 2016
 - Approximately 5.9 acres became designated
 - Approximately 78% of system will be designated as parkland
 - Percentage decreased due to the addition of more than 450 acres to the park system in 2015.
- Red Rocks Park Addition – Summer 2016
 - Approximately 98 acres added to Red Rocks became designated
 - This will completed the designation of the Mountain Park System
- 8th Round – Fall 2016
 - Approximately 180 acres will become designated
 - Approximately 81% of the system will be designated as parkland

- 9th Round – Spring 2017
 - Approximately 65 acres will become designated
 - Approximately 82% of system designated as parkland
- 10th Round – Fall 2017
 - Approximately 3.6 acres will become designated
 - Approximately 82% of system designated as parkland
- 11th Round – Winter 2018
 - Approximately 75 acres will become designated
 - Approximately 84% of system designated as parkland

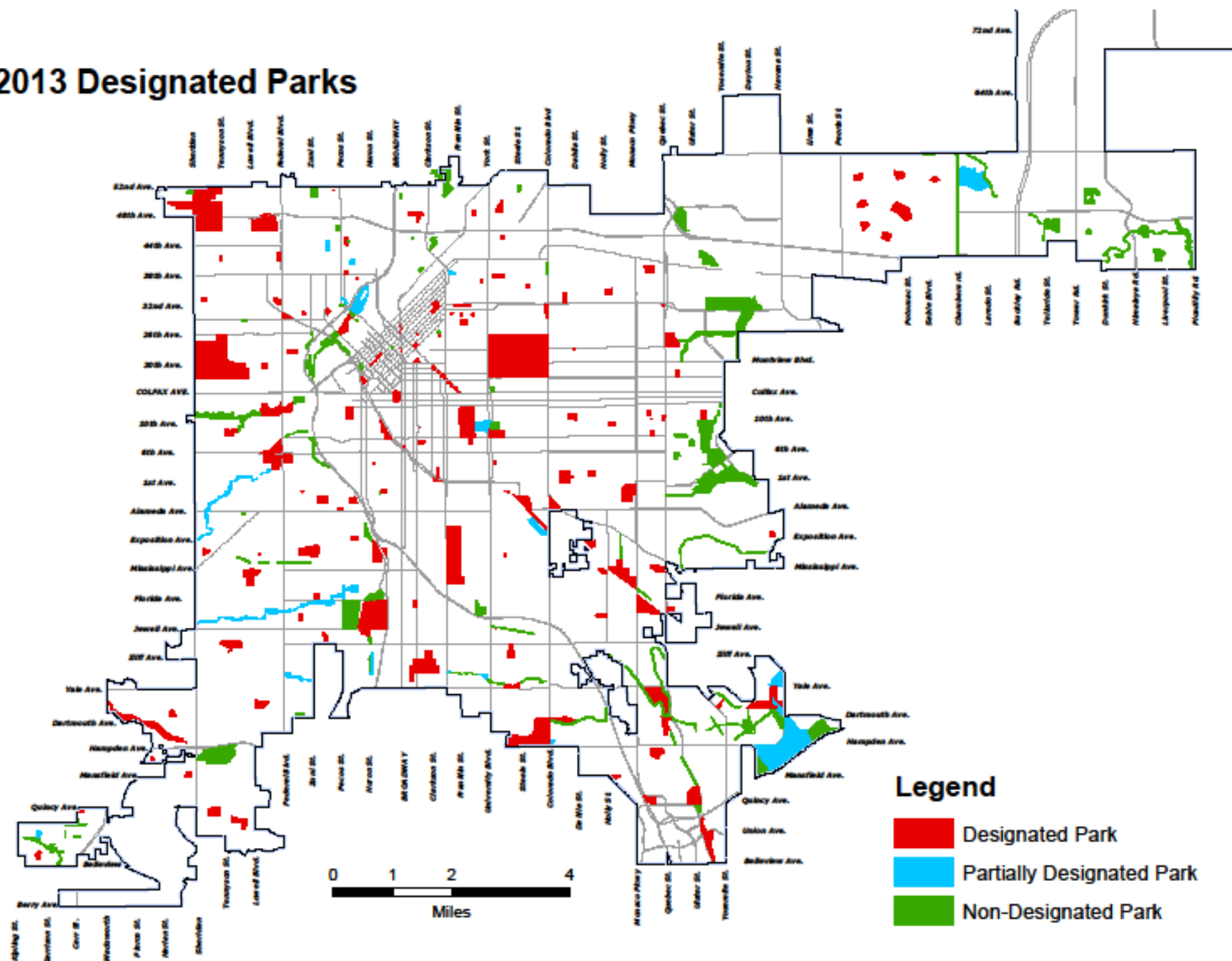


DENVER
PARKS & RECREATION

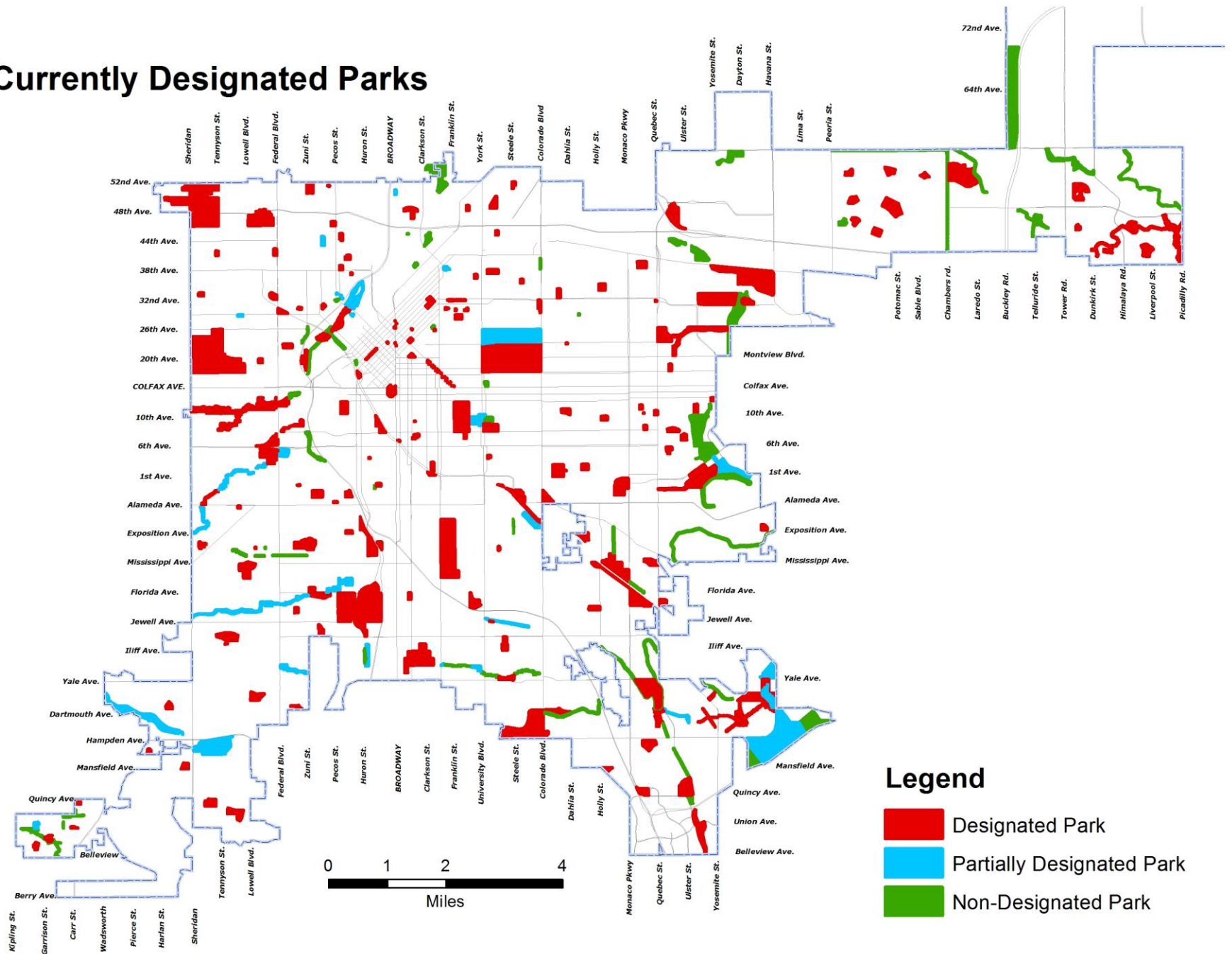
Maintenance Districts & City Council Districts



2013 Designated Parks



Currently Designated Parks



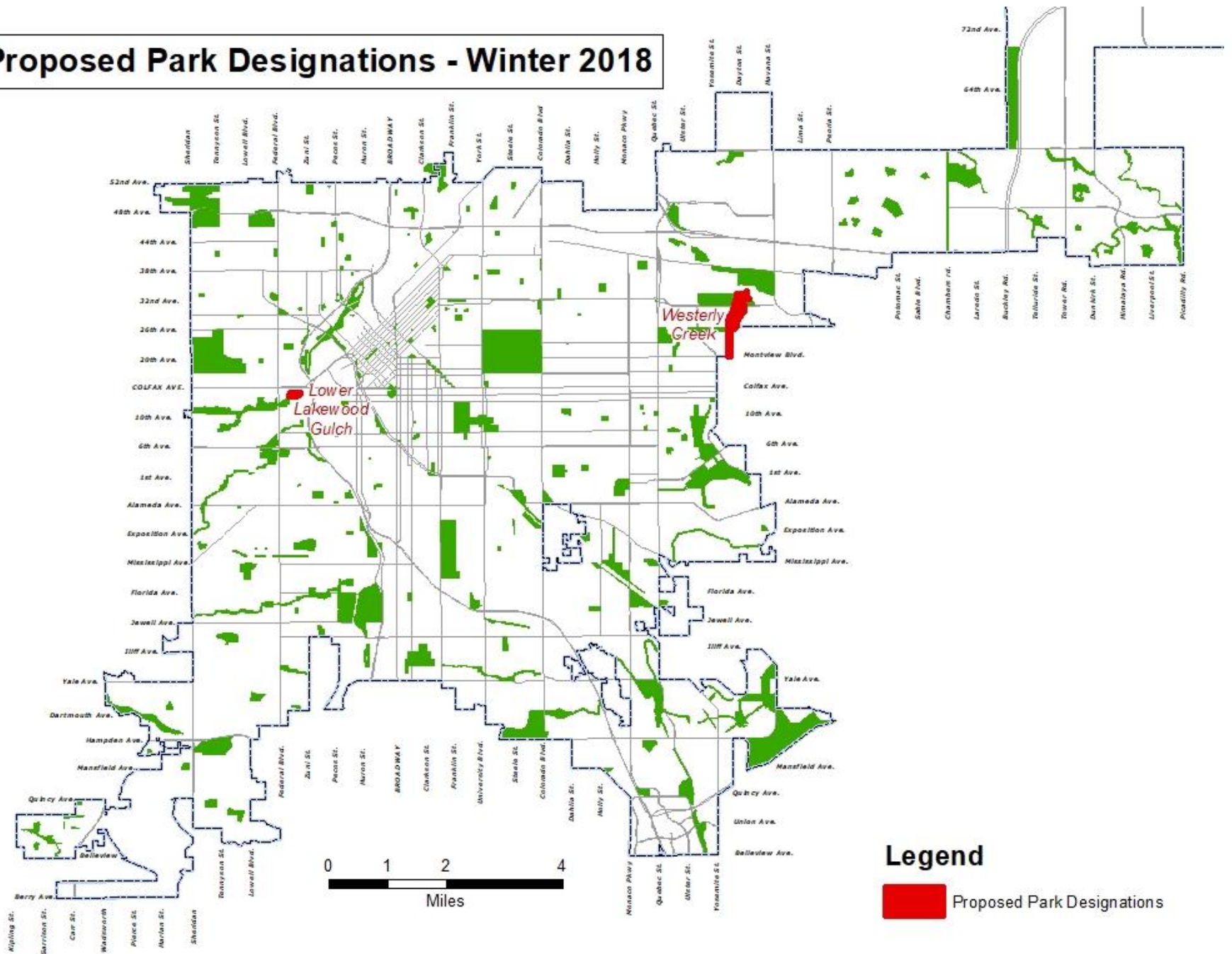
Proposed Designations - Round 11 - Winter 2018

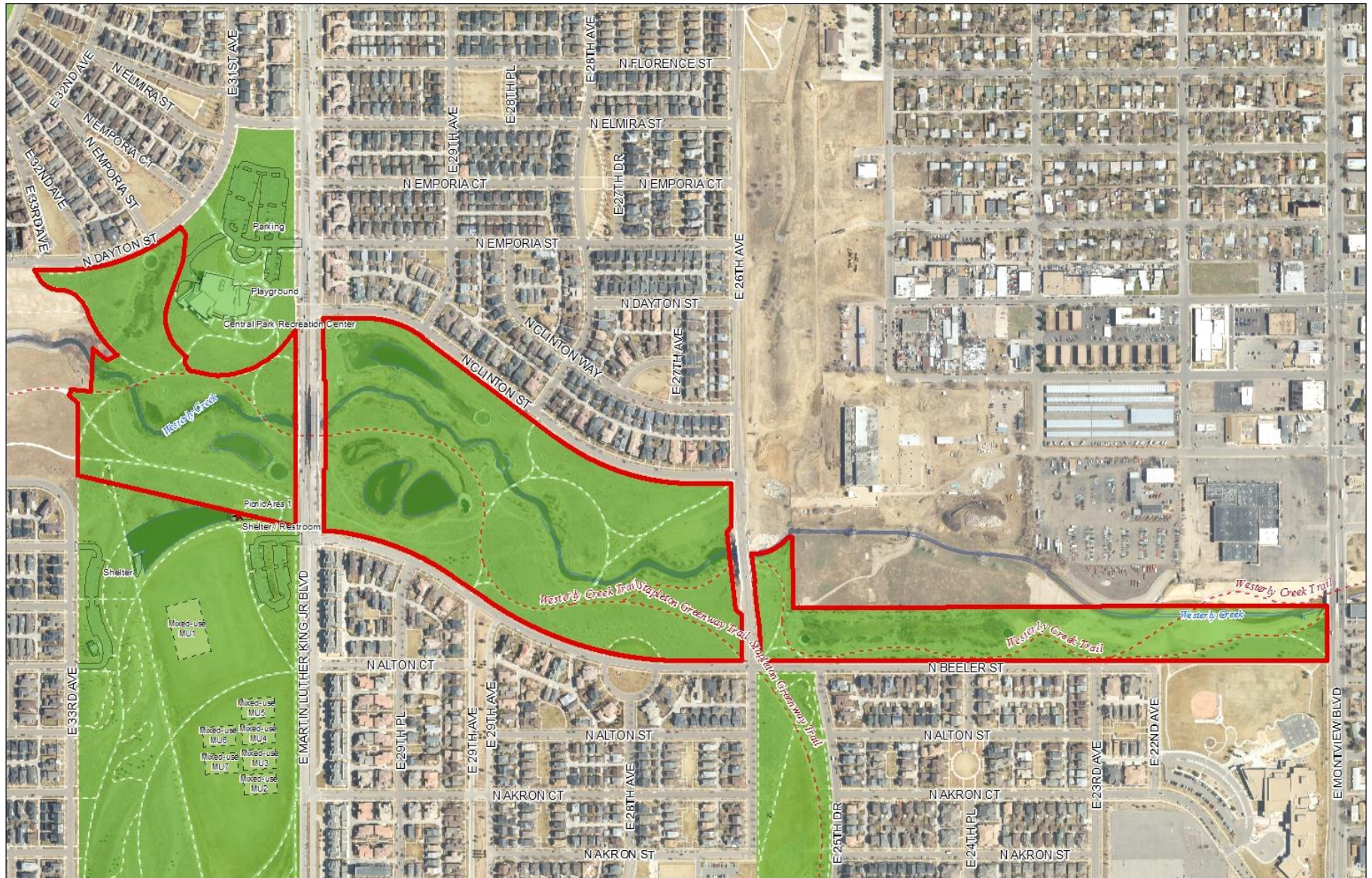
LOCATION NAME	PARK TYPE	GIS ACRES	MAINT DIST	COUNCIL DIST
Westerly Creek Park	Open Space	69.0	NE	8
Lower Lakewood Gulch	Open Space	5.9	NW	3

Total Acres:	74.9
---------------------	-------------

- Designation of parkland from 1956 to 2012 – 56 year time span: approximately 600 acres
- Designation of parkland from 2013 to 2018 – 5 year time span: approximately 1100 acres
- Park and Open Space acreage added to the Denver Parks system from 2013 to 2018: approximately 640 acres

Proposed Park Designations - Winter 2018





Westerly Creek Park

Aerial Imagery - 2016

1 inch = 380 feet at 11x17

100
Map Scale In Feet





Lower Lakewood Gulch

Aerial Imagery - 2016

1 inch = 100 feet at 11x17

100

Map Scale In Feet



Questions / Comments

