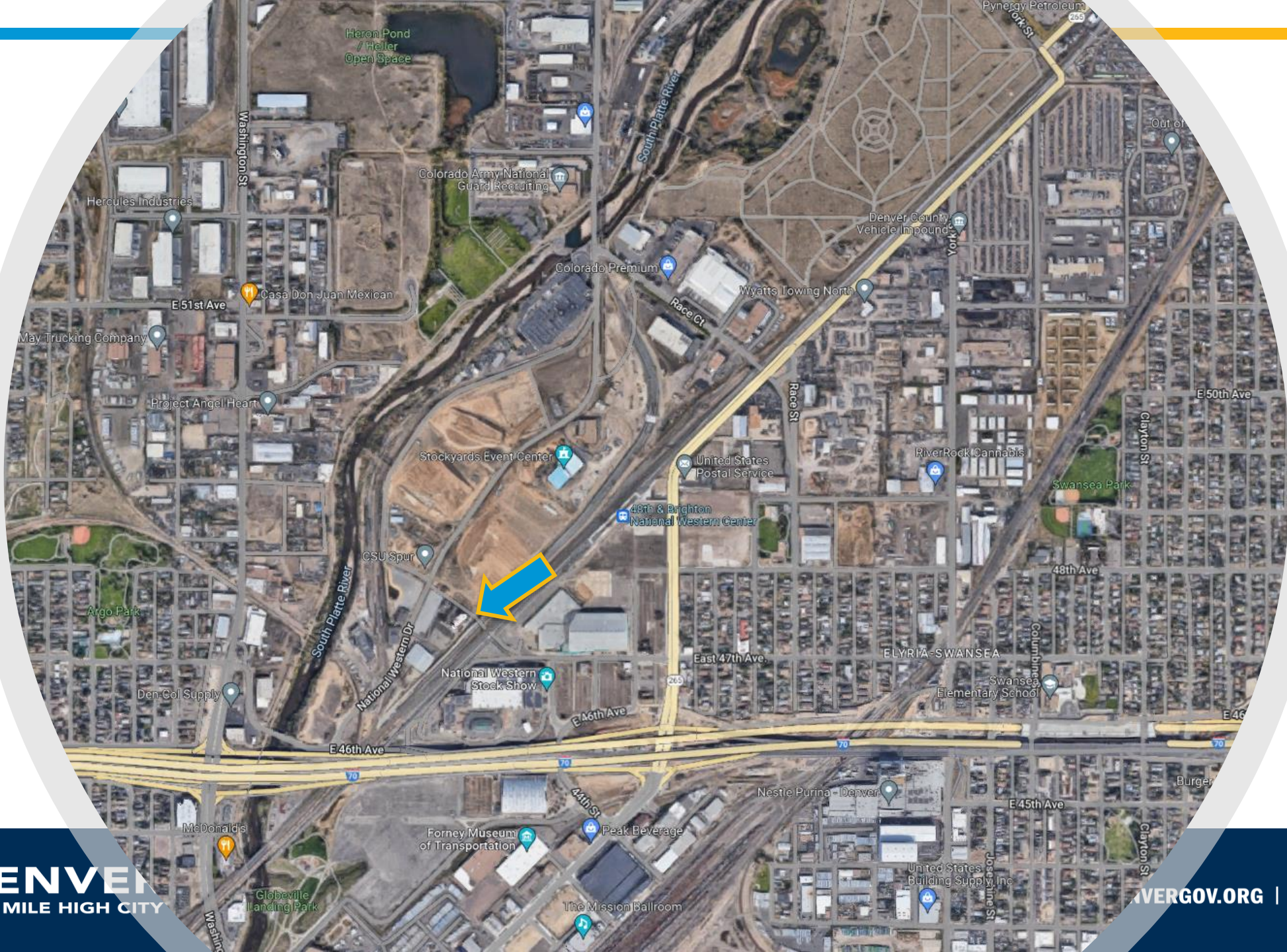


---

# Livestock Exchange

# 4701 N Marion Street

Land Use, Transportation, and Infrastructure Committee  
October 18, 2022



**DENVER**  
THE MILE HIGH CITY

[DENVERGOV.ORG](http://DENVERGOV.ORG) | DENVER 8 TV







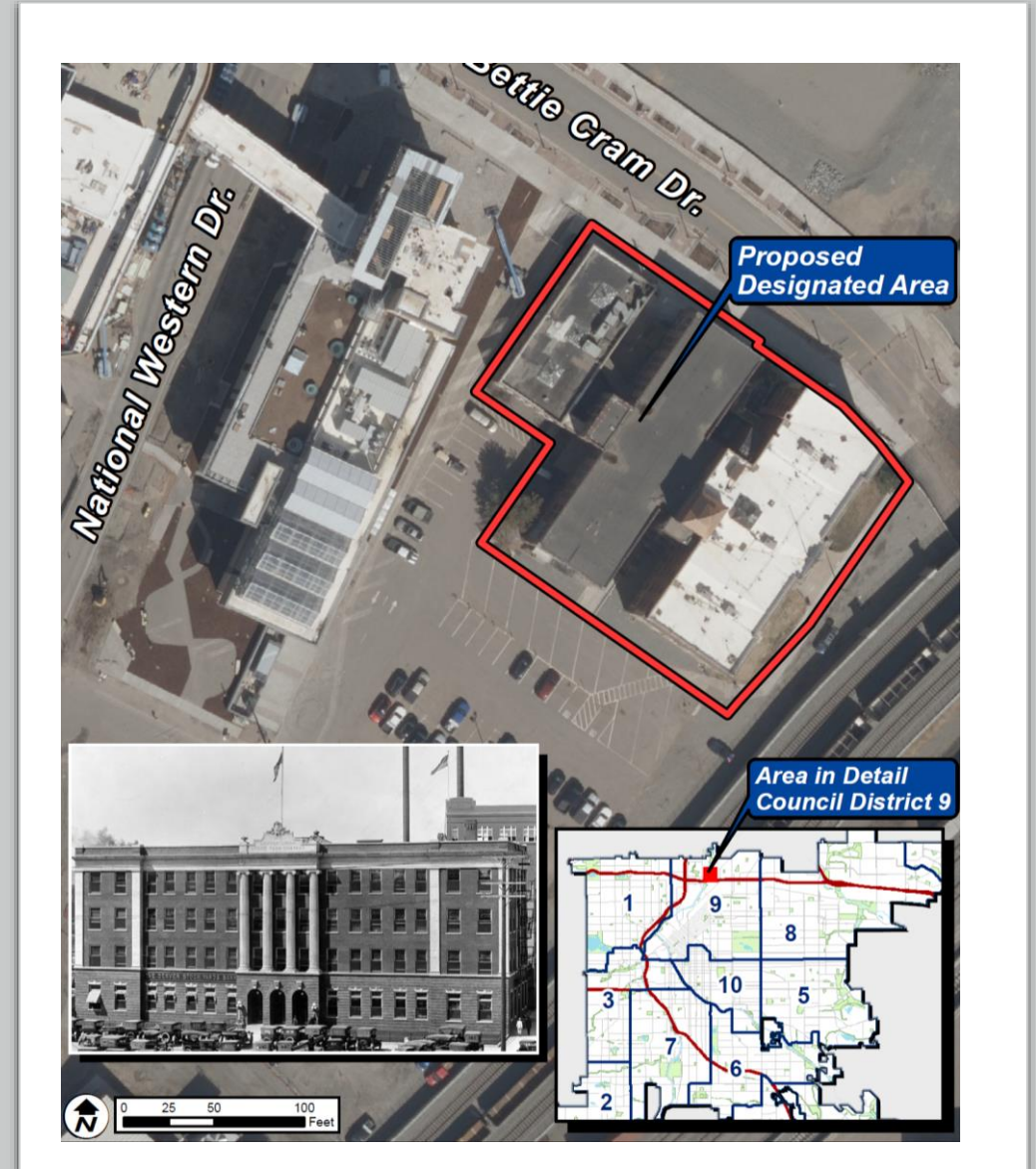


4701 N Marion Street  
Livestock Exchange



# Proposed Boundary

---







## Landmark Designation Eligibility

The structure or district must meet the following criteria \*:

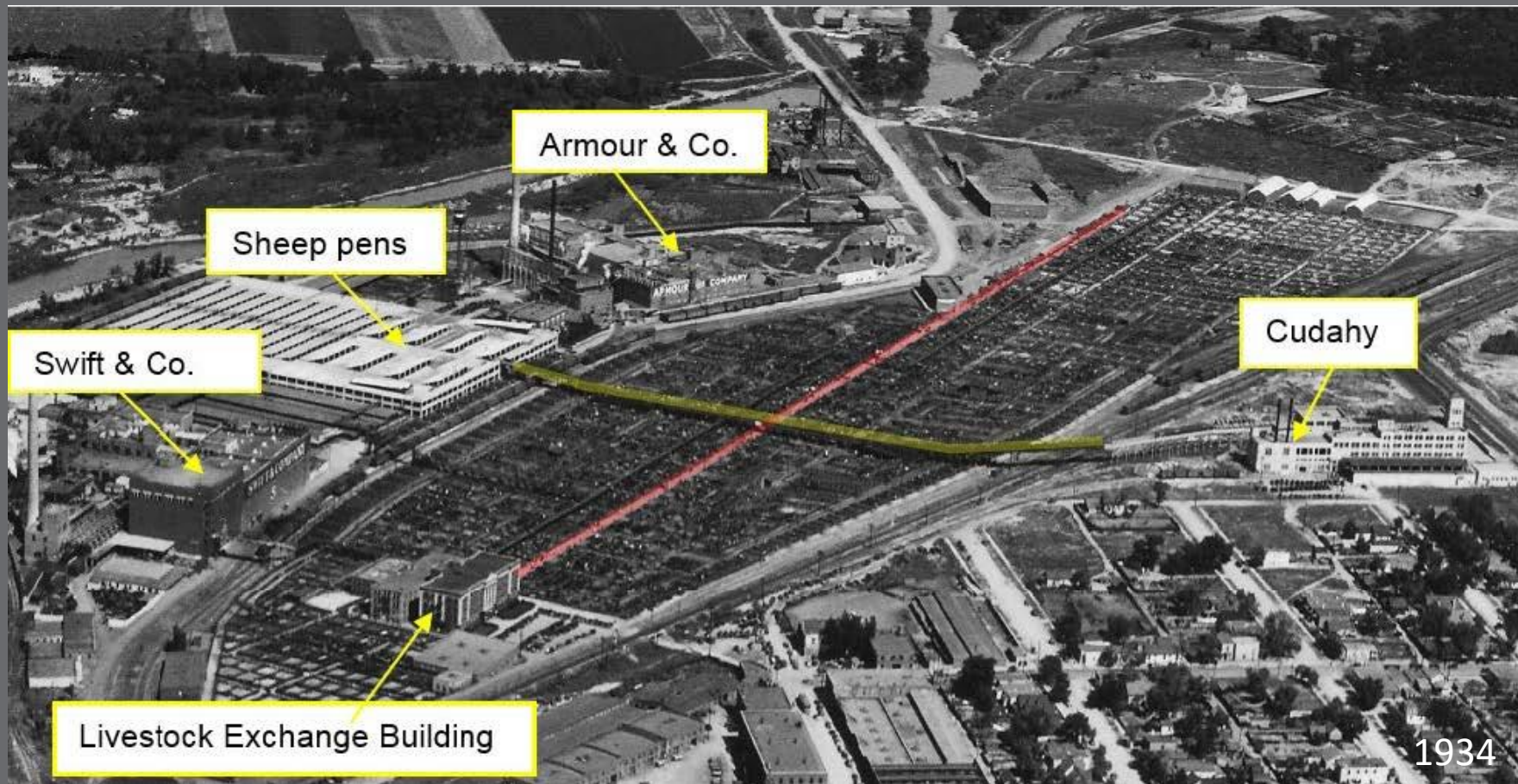
1. Maintains its integrity
2. More than 30 years old, or is of exceptional importance
3. Meets at least three of ten criteria
4. The LPC considers the historic context

\*Per Landmark Preservation Ordinance (Chapter 30, DRMC)

# Landmark Designation Criteria

- A. It has a direct association with a significant historic event or with the historical development of the city, state, or nation;**
- B. It has direct and substantial association with a recognized person or group of persons who had influence on society;**
- C. It embodies the distinctive visible characteristics of an architectural style or type;**
- D. It is a significant example of the work of a recognized architect or master builder;
- E. It contains elements of design, engineering, materials, craftsmanship, or artistic merit which represent a significant innovation or technical achievement;
- F. It represents an established and familiar feature of the neighborhood, community or contemporary city, due to its prominent location or physical characteristics;
- G. It promotes understanding and appreciation of the urban environment by means of distinctive physical characteristics or rarity;**
- H. It represents an era of culture or heritage that allows an understanding of how the site was used by past generations;
- I. It is a physical attribute of a neighborhood, community, or the city that is a source of pride or cultural understanding;
- J. It is associated with social movements, institutions, or patterns of growth or change that contributed significantly to the culture of the neighborhood, community, city, state, or nation.





**A. Direct association with historical development of the city, state, or nation**

- Centralization of growing livestock industries
  - Interconnected industries
    - Stock yards, meatpacking, railroads, NWSS, banking, media
  - States largest industry
    - Supplanted mining





**A. Direct association with historical development of the city, state, or nation**

- Growth over time
  - Three interconnected buildings
    - 1898, 1916, 1919
    - Denver Union Stock Yards peak period





History Colorado Image

## B. Direct and substantial association with a recognized person or group of persons who had influence on society

- Record-Stockman
  - Colorado Livestock Record
  - Denver Daily Record-Stockman
- Editors and owners of the paper
  - Fred P. Johnson
  - H.E. Green
  - Harry and Dan Green
- Important component of the industry
  - Ranchers' connection and link
  - News, livestock market, prices, and advocate





C. Embodies the distinctive visible characteristics of an architectural style or type;

- Early Twentieth Century Commercial style
  - One to five stories
  - Masonry
  - Rectangular form
  - Flat roof
  - Little ornamentation
  - Decorative brickwork







## C. Embodies the distinctive visible characteristics of an architectural style or type;

- Classical Revival style
  - Masonry construction
  - Three-story monumental fluted ionic columns
  - Embossed pediment
  - Classical entablature
  - Dominate center portico

1916





G. Promotes understanding and appreciation of the urban environment by means of distinctive physical characteristics or rarity

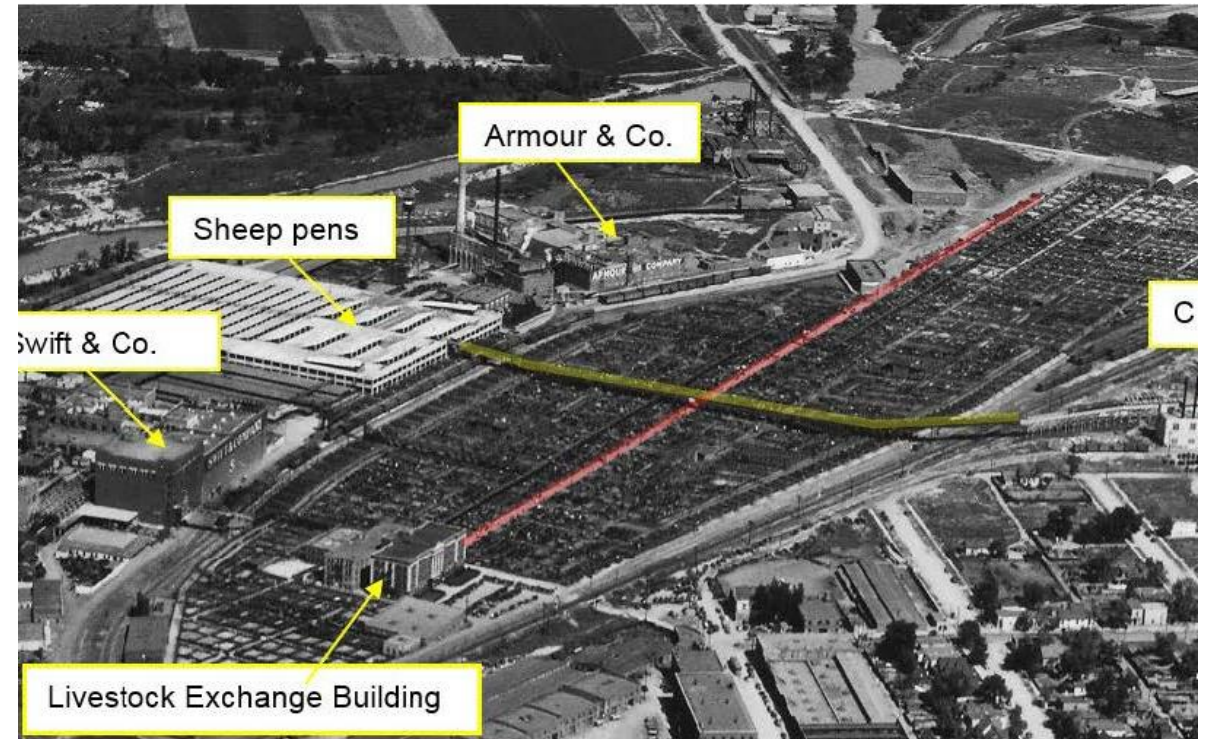
Distinctive physical characteristics



# G. Promotes understanding and appreciation of the urban environment by means of distinctive physical characteristics or rarity

---

Rarity





# Integrity

- Minor alterations
  - Elevator tower
  - Fire escape
  - Elevated walkways to connect the buildings
  - Boarded over windows
- Maintains aspects of integrity
  - Original location
  - Design, materials, and workmanship
  - Feeling and association





# Historic Context & Period of Significance

- Interconnected buildings reflect the growth and development of the livestock industry in the state
  - Growing livestock sales and meatpacking industry
  - Centralization of the numerous entities
  - Became the center of livestock activity
- Nationwide change in industry
  - 1960's cattle sales and processing moved to larger feedlots
  - Outside of urban areas century
- Period of significance
  - 1898 - 1973
  - Initial construction
  - Following two buildings
  - Extends thru growth, development, and decline
  - 1973 DUSY sale of building



Ca. 1916-1918



# Landmark Designation Review Criteria

- Over 30 years of age
- Application meets at least three criteria
  - A. It has direct and substantial association with a recognized person or group of persons who had influence on society;
  - B. It has direct and substantial association with a recognized person or group of persons who had influence on society;
  - C. It embodies the distinctive visible characteristics of an architectural style or type;
  - G. It promotes understanding and appreciation of the urban environment by means of distinctive physical characteristics or rarity;
- Retains Integrity
- LPC considers the historic context

Based on the ordinance designation criteria and on the findings of the Landmark Preservation Commission (LPC) that the application meets the criteria for designation of a structure, CPD staff recommends approval of the application.