

# North Denver Cornerstone Collaborative

Six Projects – One Vision



LAND USE, TRANSPORTATION & INFRASTRUCTURE  
COMMITTEE (LUTI)  
MARCH 20, 2018

# AGENDA

- ❑ WASHINGTON STREET
- ❑ GLOBEVILLE STORMWATER SYSTEMS STUDY



# WASHINGTON STREET

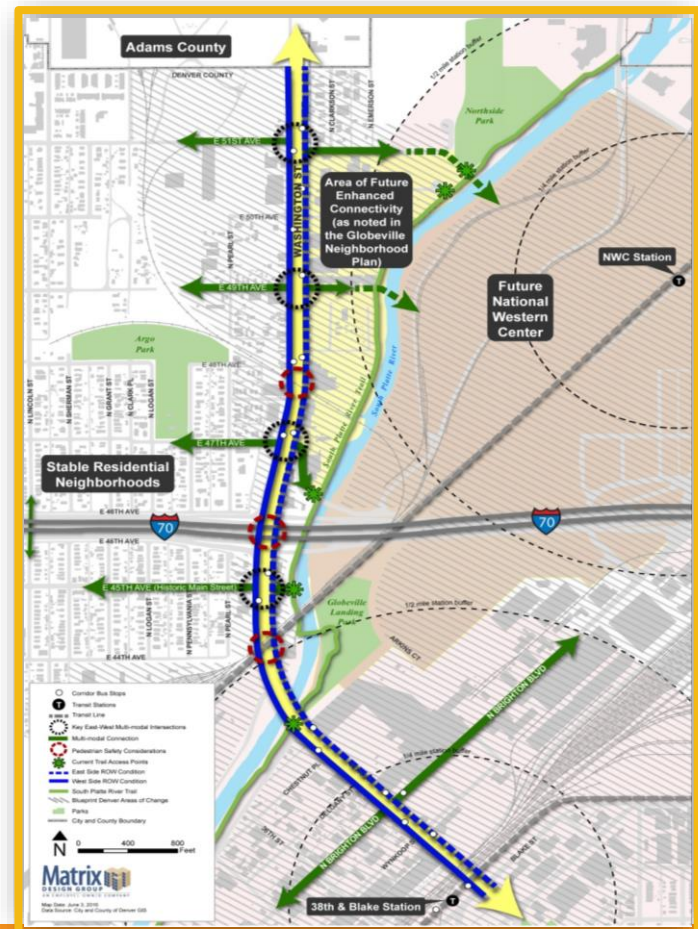




# WASHINGTON STREET – MISSION/VISION

**VISION:** The area is transformed into a mixed-use riverfront destination area that capitalizes on its adjacency to the South Platte River, a revitalized Washington Street, reinvented greenspace, and direct connections across the river to the National Western Center.

**GUIDING PRICIPLES:** Make Washington Street an attractive corridor that creates a positive sense of place, attracts private reinvestment, and better accommodates all transportation modes.

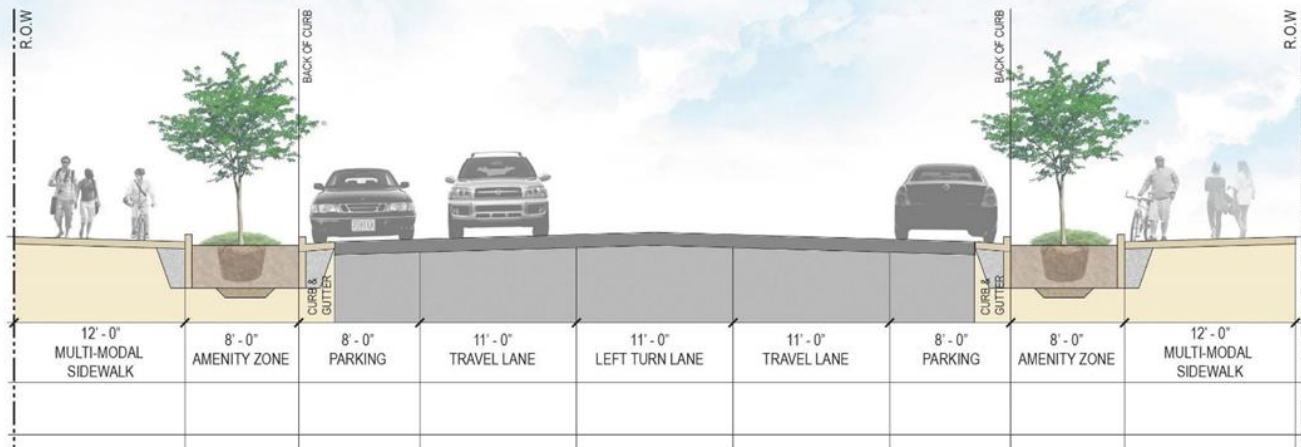




# WASHINGTON STREET - SCOPE

- One lane in each direction – matching Adams County cross section
- Formalized middle turn lane.
- 8 ft on-street parking area
- 8 ft amenity zone on both sides of street.
- 12 ft multi-modal sidewalk

## Character Area III





# WASHINGTON STREET – COMMUNITY

## 5 COMMUNITY WORKING GROUP MEETING

- Meeting #1 - February 2nd  
*Introduction*
- Meeting #2 - March  
*Visioning / Existing Conditions*
- Meeting #3 – June  
*Review Visioning/ Review Character Areas*
- Meeting #4 – August 3<sup>rd</sup>  
*Review and discuss alternatives*
- Meeting #5 – October  
*Confirm preferred alternatives*

## 3 PUBLIC MEETINGS

- Meeting #1 - May  
*Visioning*
- Meeting #2 – August 15<sup>th</sup>  
*Alternative Cross Sections/Character Areas*
- Meeting #3 – October  
*Preferred Alternative*



# WASHINGTON STREET – SCHEDULE



- FINISH COMMUNITY MEETING
- BEGIN DRAFTING REPORT



- STUDY FINALIZED
- DEVELOPING PRELIMINARY DESIGN RFQ
- DEVELOP SCOPE OF WORK FOR ROW SURVEY



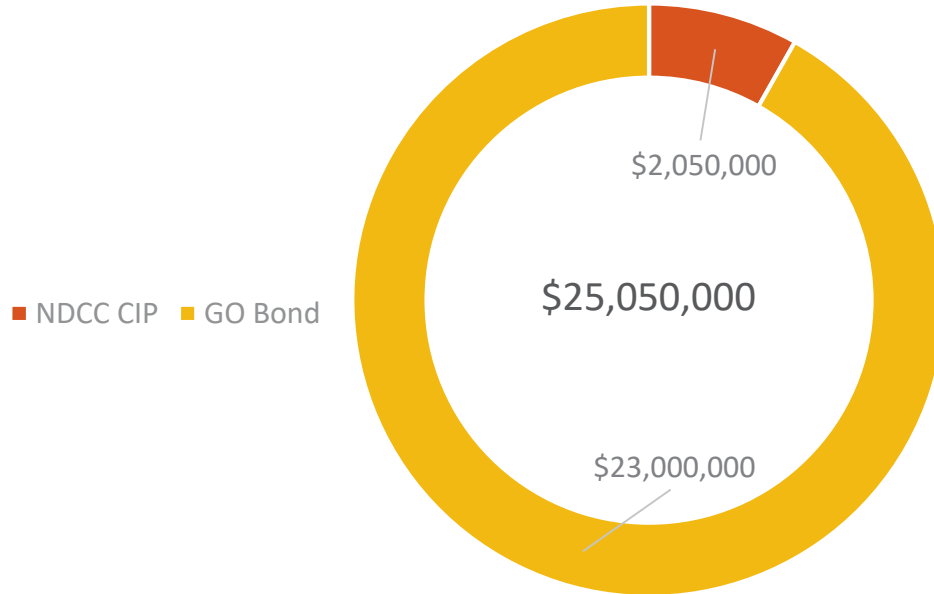
- RFQ FOR PRELIMINARY DESIGN OUT FOR BID



- BEGIN PRELIMINARY DESIGN
- ROW SURVEY COMPLETE
- BEGIN COMMUNITY OUTREACH



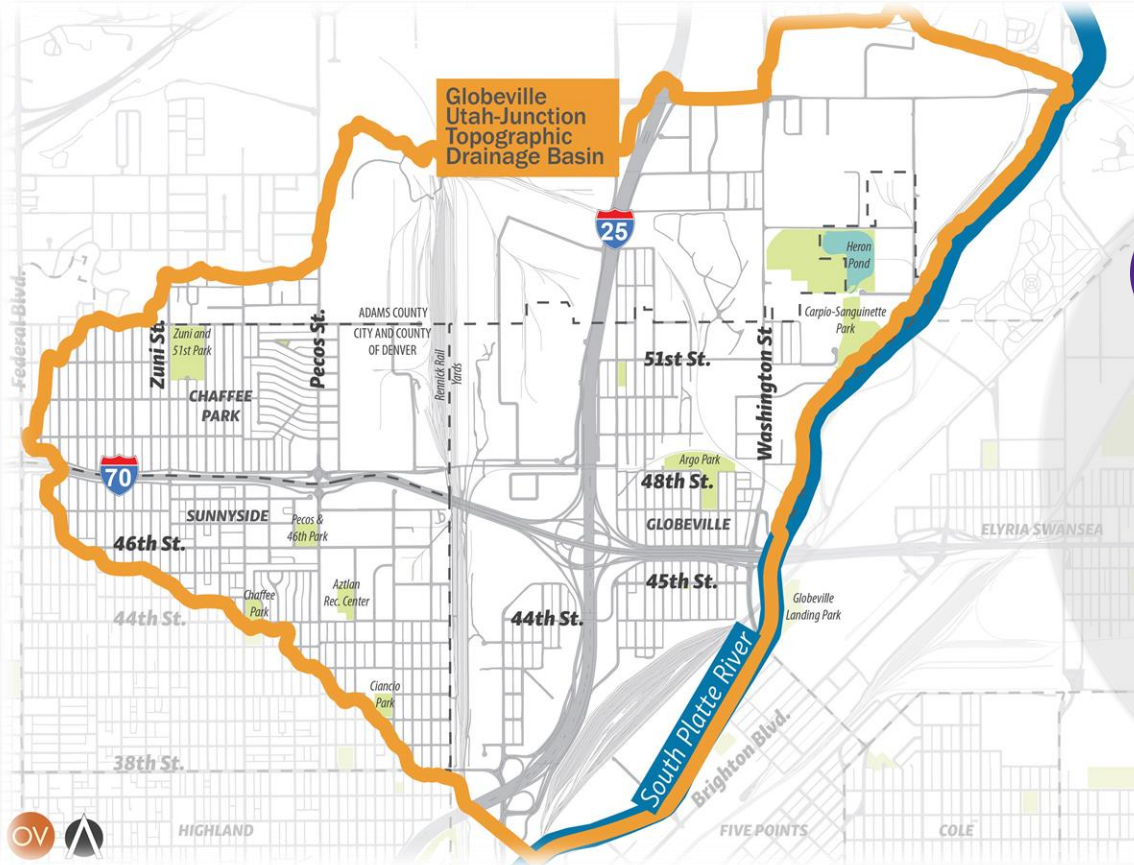
# WASHINGTON STREET – BUDGET





# GLOBEVILLE STORMWATER SYSTEMS





Globeville  
Utah-Junction  
Topographic  
Drainage Basin



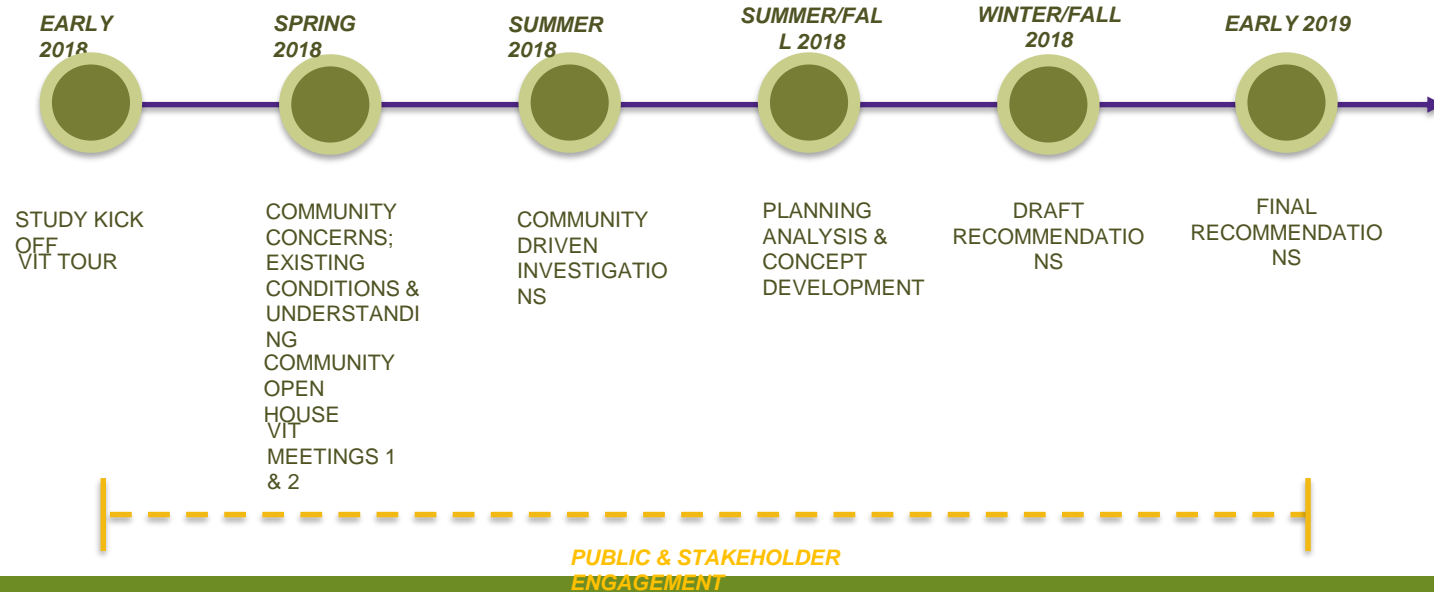
# GLOBEVILLE STORMWATER SYSTEMS STUDY: SCOPE

The Globeville Stormwater Systems Study seeks to enable community conversations around stormwater alternatives, foster community support and participation in solutions with an ultimate goal of identifying a toolbox of solutions that alleviates flooding, improves water quality, provides multiple community benefits, preserves the environment and improves neighborhood green space.





# GLOBEVILLE STORMWATER SYSTEMS STUDY: SCHEDULE





# GLOBEVILLE STORMWATER SYSTEMS STUDY: COLLABORATIVE APPROACH



**GREY  
INFRASTRUCTURE**



**COMMUNITY**



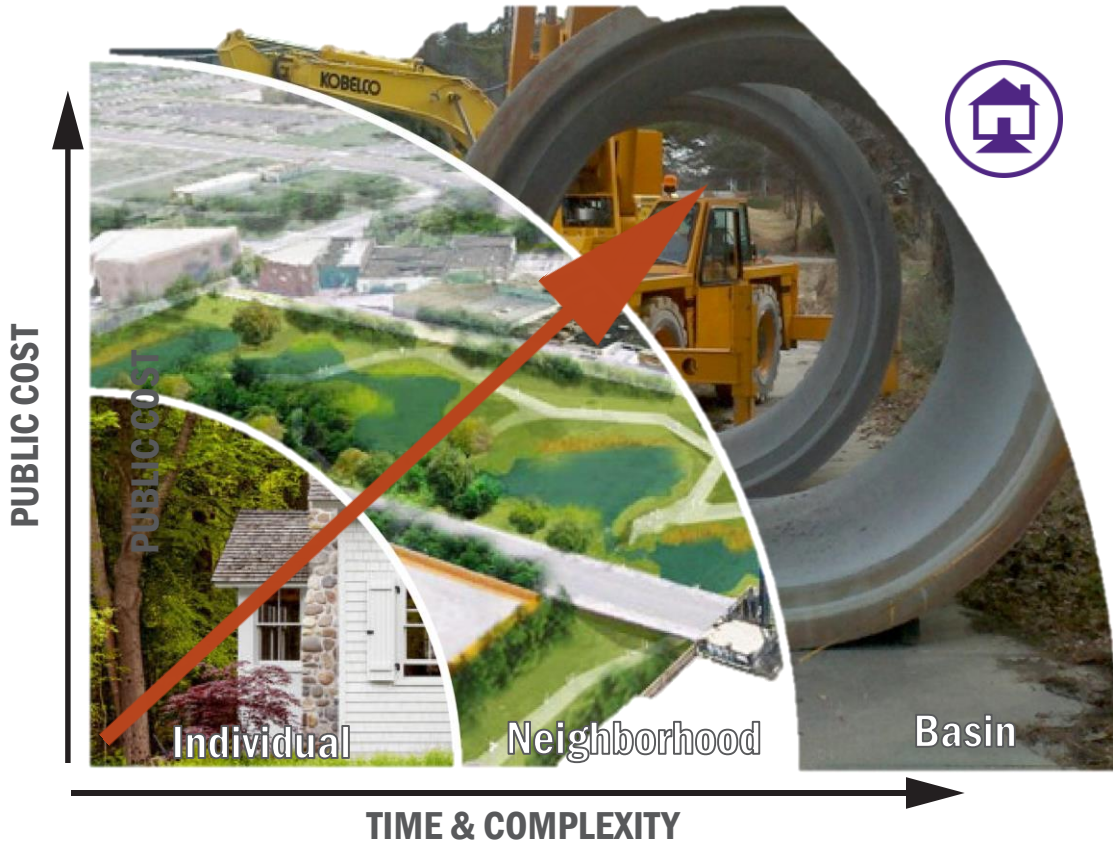
**PLANNING &  
URBAN DESIGN**



**GREEN  
INFRASTRUCTURE**



Planning in Design in Action



# GLOBEVILLE STORMWATER SYSTEMS STUDY: BENEFIT AND RESILIENCE



Planning in Design in Action



## GLOBEVILLE STORMWATER SYSTEMS STUDY: NEXT STEPS

- PUBLIC MEETING  
APRIL/MAY
- DEVELOPING  
SOLUTIONS
- LEVERAGING  
PROJECTS



# THANK YOU

## QUESTIONS?

