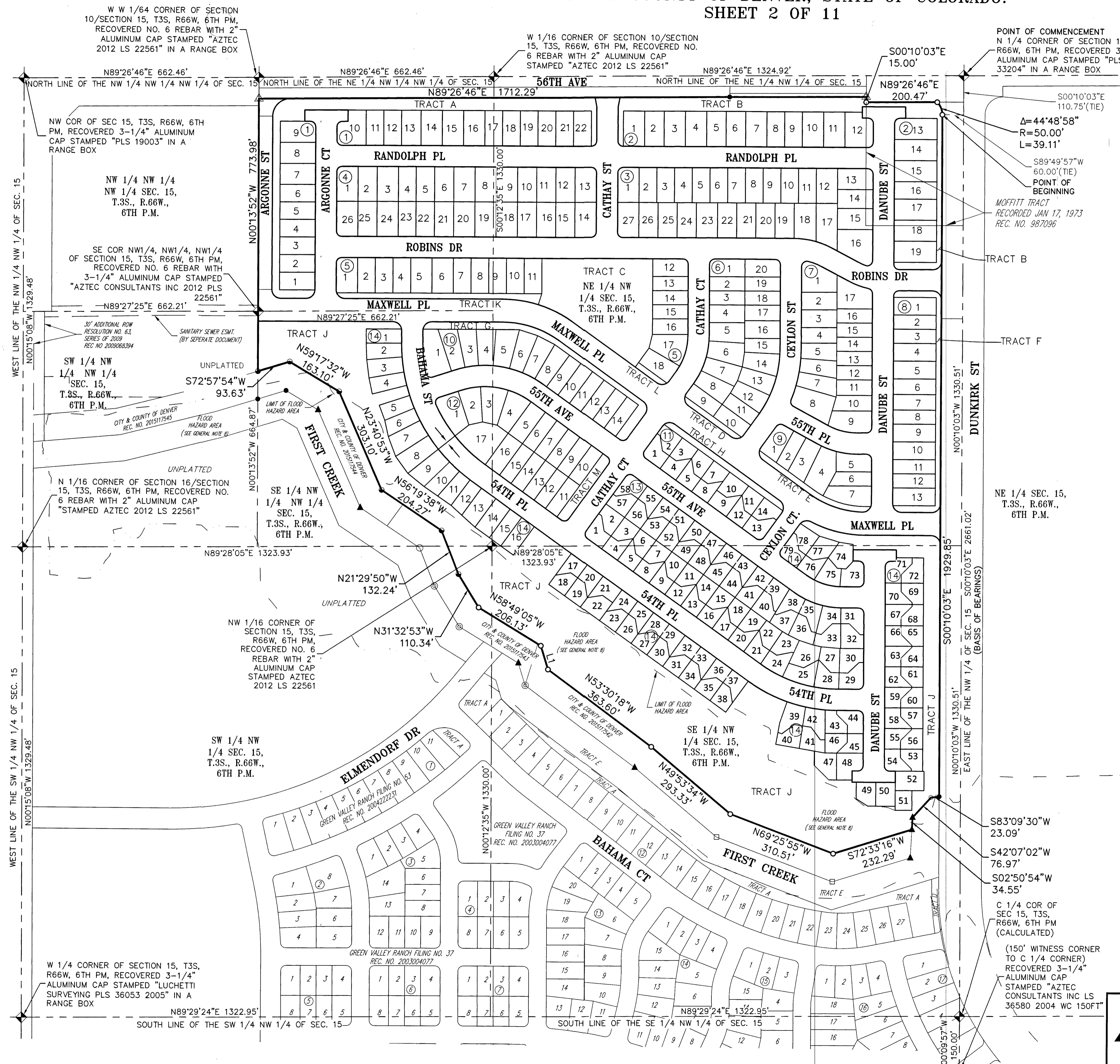


GREEN VALLEY RANCH FILING NO. 62

A RESUBDIVISION OF A PART OF LOT 1, MOFFITT TRACT AND A PART OF THE NORTHWEST QUARTER OF SECTION 15,
TOWNSHIP 3 SOUTH, RANGE 66 WEST OF THE SIXTH PRINCIPAL MERIDIAN,
CITY AND COUNTY OF DENVER, STATE OF COLORADO.
SHEET 2 OF 11



TRACT TABLE				
TRACT	AREA (SQ.FT)	AREA (AC ±)	USE	OWNED BY / MAINTAINED BY
TRACT A	48,723	1.119	OPEN SPACE, DRAINAGE, UTILITIES, PUBLIC SIDEWALK	TCMD / TCMD
TRACT B	44,562	1.023	OPEN SPACE, DRAINAGE, UTILITIES, PUBLIC SIDEWALK	TCMD / TCMD
TRACT C	69,476	1.595	OPEN SPACE	TCMD / TCMD
TRACT D	2,942	0.068	OPEN SPACE	TCMD / TCMD
TRACT E	5,629	0.129	OPEN SPACE	TCMD / TCMD
TRACT F	13,369	0.307	OPEN SPACE	TCMD / TCMD
TRACT G	15,831	0.363	OPEN SPACE	TCMD / TCMD
TRACT H	7,263	0.167	OPEN SPACE	TCMD / TCMD
TRACT J	457,726	10.508	OPEN SPACE, DRAINAGE, UTILITIES	TCMD / TCMD
TRACT K	9,634	0.221	OPEN SPACE	TCMD / TCMD
TRACT L	1,476	0.034	OPEN SPACE	TCMD / TCMD
TRACT M	6,503	0.149	OPEN SPACE	TCMD / TCMD
TOTAL	683,144	15.683		

TRACT "I" WAS INTENTIONALLY OMITTED
TCMD = TOWN CENTER METROPOLITAN DISTRICT

LAND AREA SUMMARY

TYPE	AREA (SF)	AREA (AC)
LOTS (351)	1,592,137	36.55
TRACTS (12)	683,144	15.68
ROW	817,696	18.77
TOTAL	3,092,977	71.00

LINE TABLE		
LINE	BEARING	LENGTH
L1	N17°09'47"W	69.86'

MONUMENT LEGEND

- ◆ FOUND SECTION CORNER AS NOTED
- FOUND WITNESS CORNER AS NOTED
- ⊙ FOUND #5 REBAR WITH PLASTIC CAP STAMPED LS 19003
- FOUND 1-1/2" ALUM CAP STAMPED PLS 24942
- FOUND #5 REBAR WITH NO CAP
- △ FOUND BRASS TAG STAMPED PLS 29027
- ▲ FOUND #5 REBAR WITH 1-1/4" ORANGE PLASTIC CAP STAMPED LPI PLS 29027
- FOUND #5 REBAR WITH 1-1/4" RED PLASTIC CAP STAMPED AZTEC LS 38256
- FOUND #5 REBAR WITH 1-1/4" BLUE PLASTIC CAP STAMPED AZTEC LS 22561
- △ FOUND 1" BRASS TAG STAMPED LS 22561
- SET #5 REBAR WITH 1-1/4" ORANGE PLASTIC CAP STAMPED AZTEC LS 25645
- RANGE POINT: MONUMENT TO BE SET BY OTHERS IN A RANGE BOX AFTER CONSTRUCTION OF THE STREETS.



FOR AND ON BEHALF OF
AZTEC CONSULTANTS, INC.

AZTEC
CONSULTANTS, INC.

300 East Mineral Ave., Suite 1
Littleton, Colorado 80122
Phone: (303) 713-1898
Fax: (303) 713-1897
www.aztecconsultants.com

Aztec Proj. No.: 19315-14

DEVELOPER
OAKWOOD HOMES

4908 TOWER ROAD
DENVER, COLORADO 80249-6684
(303) 486-8500

DATE OF PREPARATION: 2015-06-17

SCALE: 1" = 150'

SHEET 2 OF 11