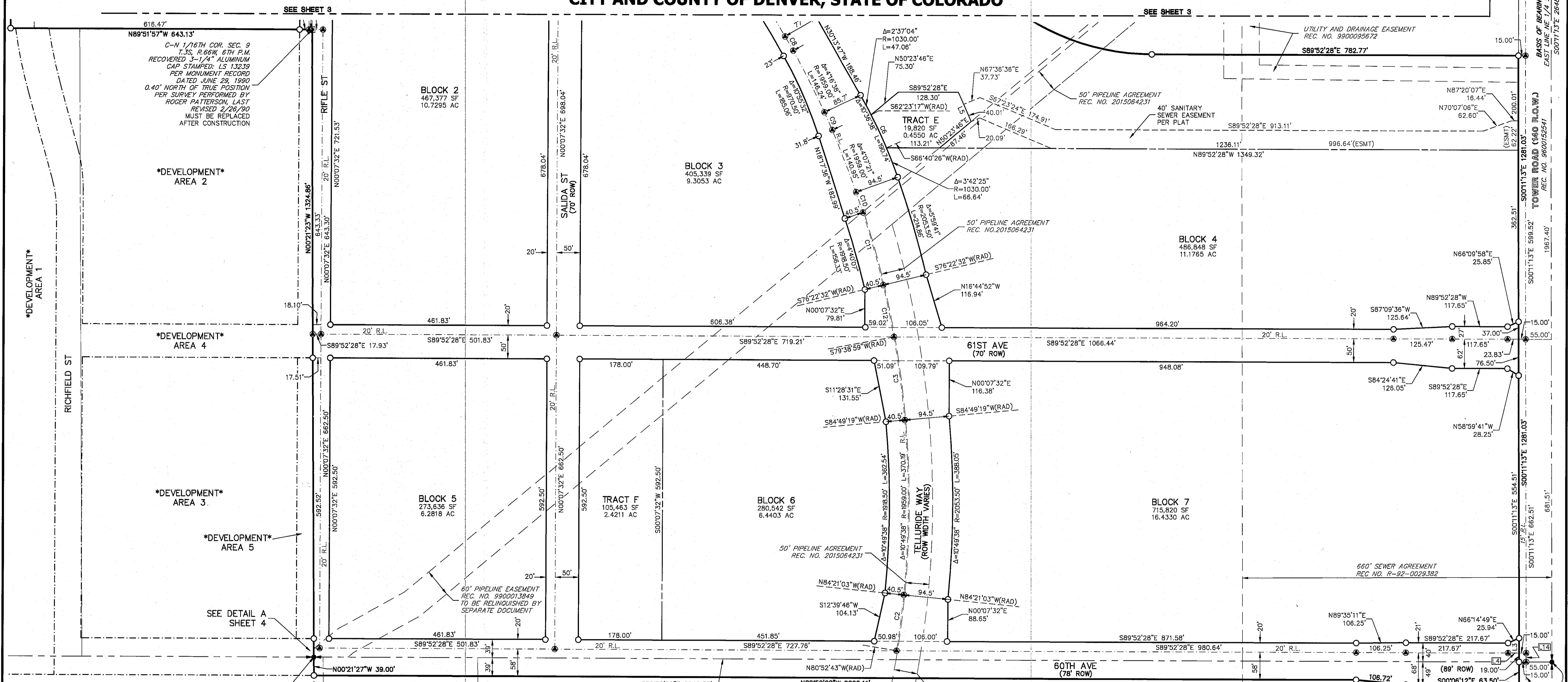


# PEÑA STATION FILING NO. 1

PART OF THE EAST HALF AND THE NORTHWEST QUARTER OF SECTION 9, TOWNSHIP 3 SOUTH, RANGE 66 WEST OF THE SIXTH PRINCIPAL MERIDIAN, CITY AND COUNTY OF DENVER, STATE OF COLORADO

SEE SHEET 3



C-N 1/16TH COR. SEC. 9 T.3S, R.66W, 6TH P.M. RECOVERED 3-1/4" ALUMINUM CAP STAMPED: LS 13239 PER MONUMENT RECORD DATED JUNE 29, 1990 0.40' NORTH OF TRUE POSITION PER SURVEY PERFORMED BY ROGER PATTERSON, LAST REVISED 2/28/90 MUST BE REPLACED AFTER CONSTRUCTION

C 1/4 COR. SEC. 9 T.3S, R.66W, 6TH P.M. RECOVERED 3-1/4" ALUMINUM CAP STAMPED: LS 20699 PER MONUMENT RECORD DATED FEB. 16, 1996 TO BE REPLACED AFTER CONSTRUCTION

UNPLATTED KARL SMITH REC. NO. 2002200421

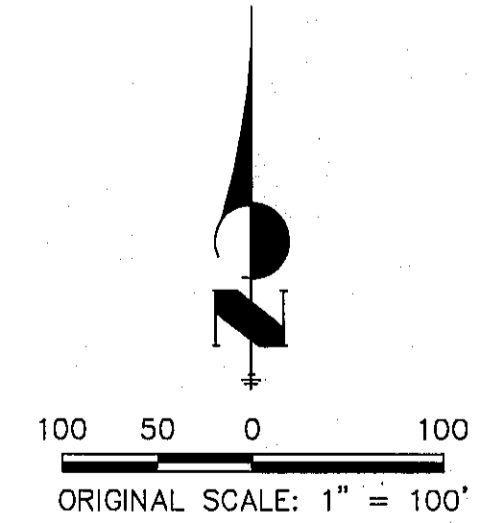
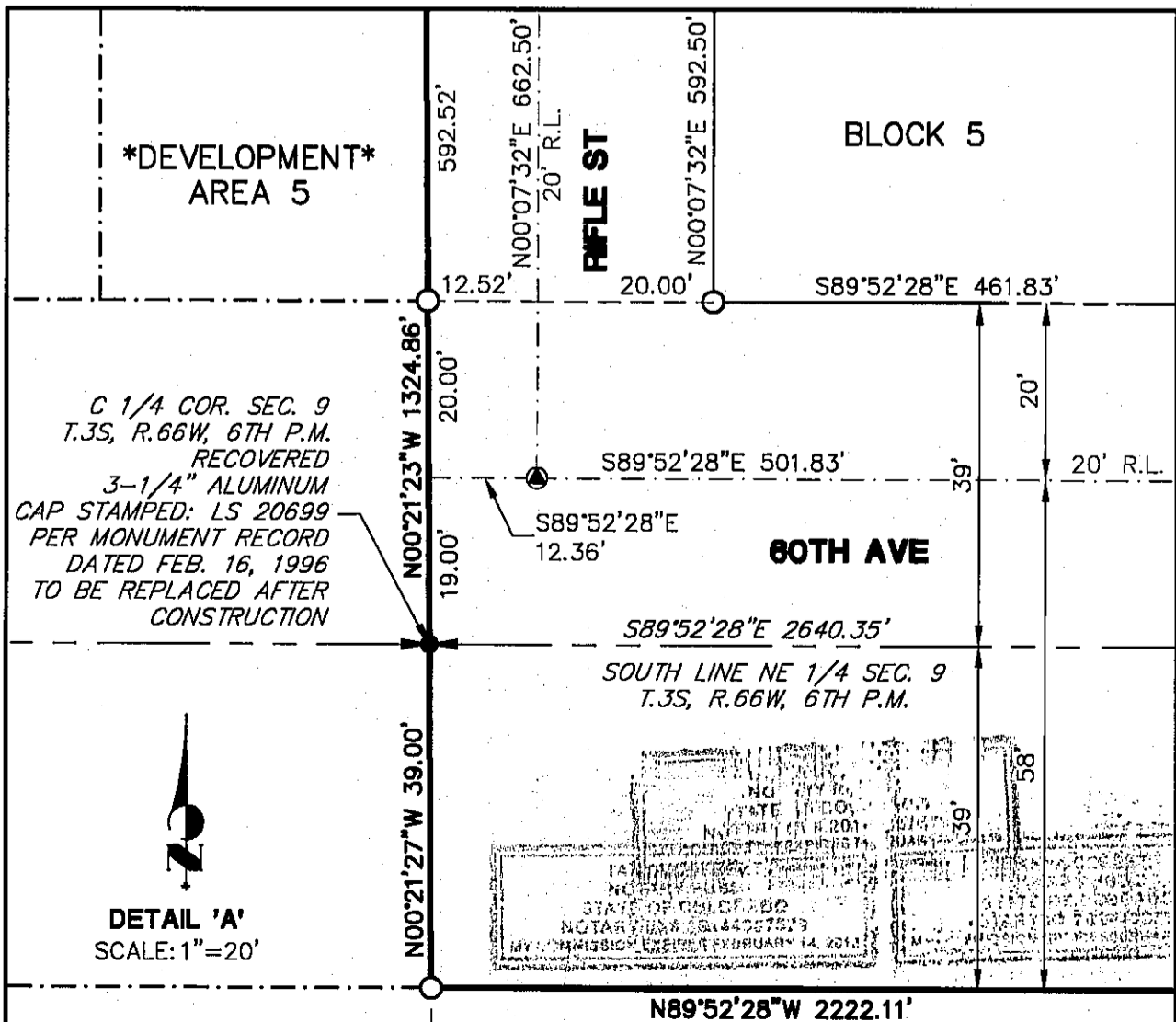
S 1/4 COR. SEC. 9 T.3S, R.66W, 6TH P.M. RECOVERED 3-1/4" ALUMINUM CAP STAMPED: LS 27278 IN RANGE BOX

SE 1/4 SEC. 9 T.3S, R.66W, 6TH P.M.

UNPLATTED KARL SMITH BOOK 2168 PAGE 491

E 1/4 COR. SEC. 9 T.3S, R.66W, 6TH P.M. RECOVERED 3" BRASS CAP STAMPED: LS 15244 IN A RANGE BOX PER MONUMENT RECORD DATED JULY 19, 2000

LINE TABLE			CURVE TABLE			
LINE	BEARING	DISTANCE	CURVE	DELTA	RADIUS	LENGTH
L3	S00°11'13"E	31.50'	C2	3°28'20"	1959.00'	118.72'
L4	S89°52'28"E	23.89'	C3	5°10'20"	1959.00'	178.85'
L5	S23°55'48"E	67.56'	C6	4°17'09"	1030.00'	77.05'
L12	S89°53'48"W	15.00'	C8	1°00'40"	1959.00'	34.57'
L13	S00°08'12"E	63.44'	C9	1°11'58"	1959.00'	41.01'
L14	S00°11'13"E	19.00'	C10	1°19'34"	1959.00'	45.34'
			C11	4°40'07"	1959.00'	159.63'
			C12	3°16'27"	1959.00'	111.95'



- LEGEND**
- SET 18" LONG NO. 5 REBAR WITH A 1.5" ALUMINUM CAP STAMPED: JR ENG PLS 38252
  - RANGE POINTS TO BE SET AFTER CONSTRUCTION
  - 30" LONG NO. 8 REBAR WITH A DURABLE CAP STAMPED RANGE POINT & THE PLS NUMBER OF THE RESPONSIBLE SURVEYOR
  - (RAD) RADIAL BEARING

PEÑA STATION FILING NO. 1  
JOB NO. 15500.01  
APRIL 29, 2015  
SHEET 4 OF 4



Centennial 303-740-9993 • Colorado Springs 719-599-2593  
Fort Collins 970-491-9888 • www.jrengineering.com