

Redeveloping the Former St Anthony Hospital Central Campus

..... Presentation to
..... 8Ybj Yf7]hm7 ci bW
..... @ H:7 ca a]hYY

8Yj Y`cdYf`6UW_[fci bX



EnviroFinance[®] Group
Land Reuse and Redevelopment

*Master
Developer*

An integrated remediation management and land redevelopment firm combining capital with technical, risk management and urban planning expertise to promote sustainable land use through Brownfield reclamation.



ASARCO Refinery, Denver, CO



National Envelope Plant, NJ



Kane Wetlands Mitigation, NJ



Arroyo Gateway Business Park, CA



Dahlia Square, Denver, CO

Previous Community Planning Efforts

Previous
Community
Planning
Efforts



Community
Meetings with
RNOs and Open
House

The redevelopment of the former St. Anthony Hospital campus will create a new sustainable urban neighborhood that...

The redevelopment of the former St. Anthony Hospital campus will create a new sustainable urban neighborhood that...

Has a unique identity, informed in large part by its engagement with Sloan's Lake Park

The redevelopment of the former St. Anthony Hospital campus will create a new sustainable urban neighborhood that...

Has a unique identity, informed in large part by its engagement with Sloan's Lake Park

Is mixed-use, leaning residential, and mixed-income, leaning market

The redevelopment of the former St. Anthony Hospital campus will create a new sustainable urban neighborhood that...

Has a unique identity, informed in large part by its engagement with Sloan's Lake Park

Is mixed-use, leaning residential, and mixed-income, leaning market

Capitalizes on its proximity to multiple modes of transit

The redevelopment of the former St. Anthony Hospital campus will create a new sustainable urban neighborhood that...

Has a unique identity, informed in large part by its engagement with Sloan's Lake Park

Is mixed-use, leaning residential, and mixed-income, leaning market

Capitalizes on its proximity to multiple modes of transit

Brings neighborhood serving retail and is a catalyst for significant reinvestment along West Colfax Avenue

The redevelopment of the former St. Anthony Hospital campus will create a new sustainable urban neighborhood that...

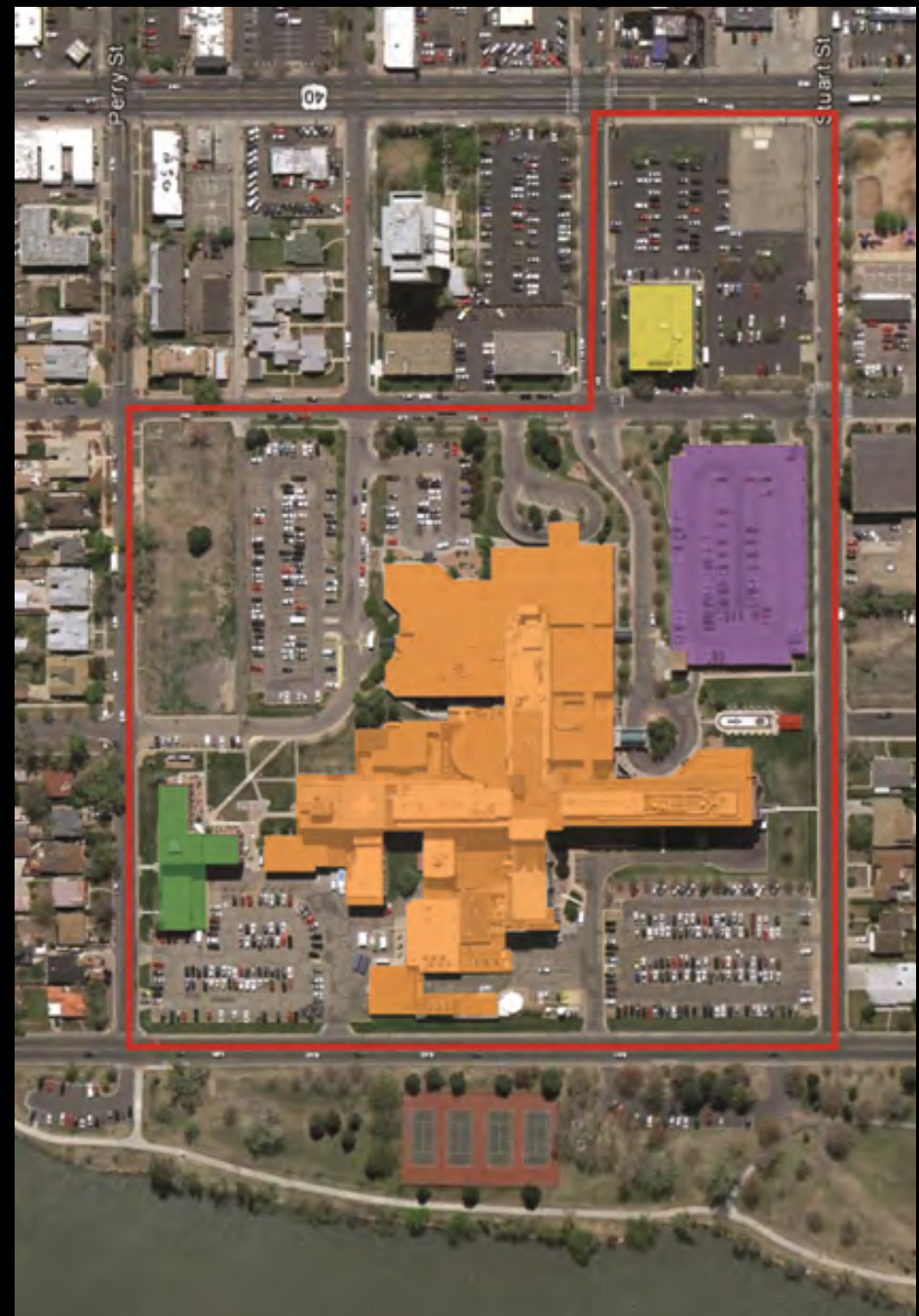
Has a unique identity, informed in large part by its engagement with Sloan's Lake Park

Is mixed-use, leaning residential, and mixed-income, leaning market

Capitalizes on its proximity to multiple modes of transit

Brings neighborhood serving retail and is a catalyst for significant reinvestment along West Colfax Avenue

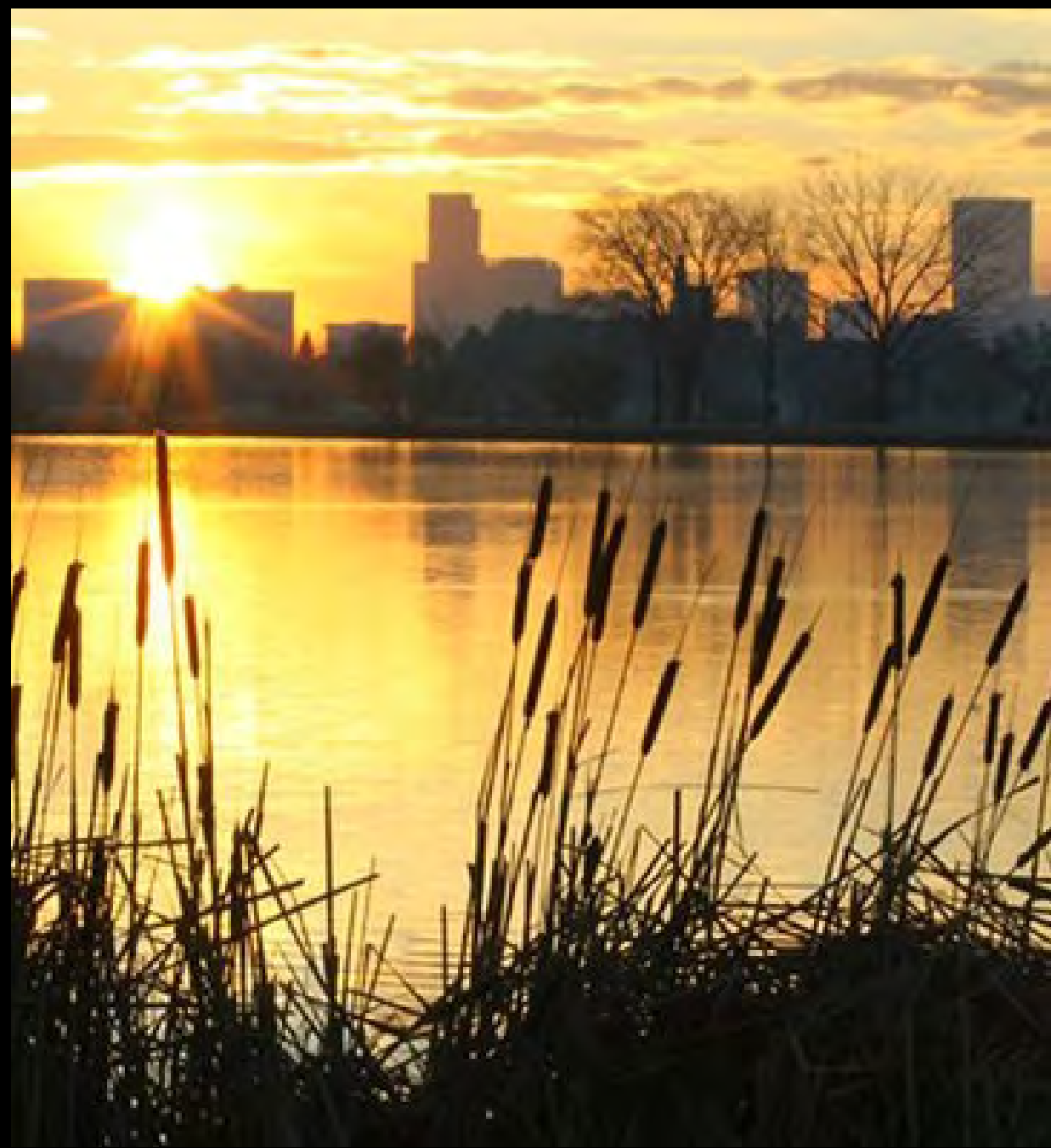
is integrated into the existing neighborhood

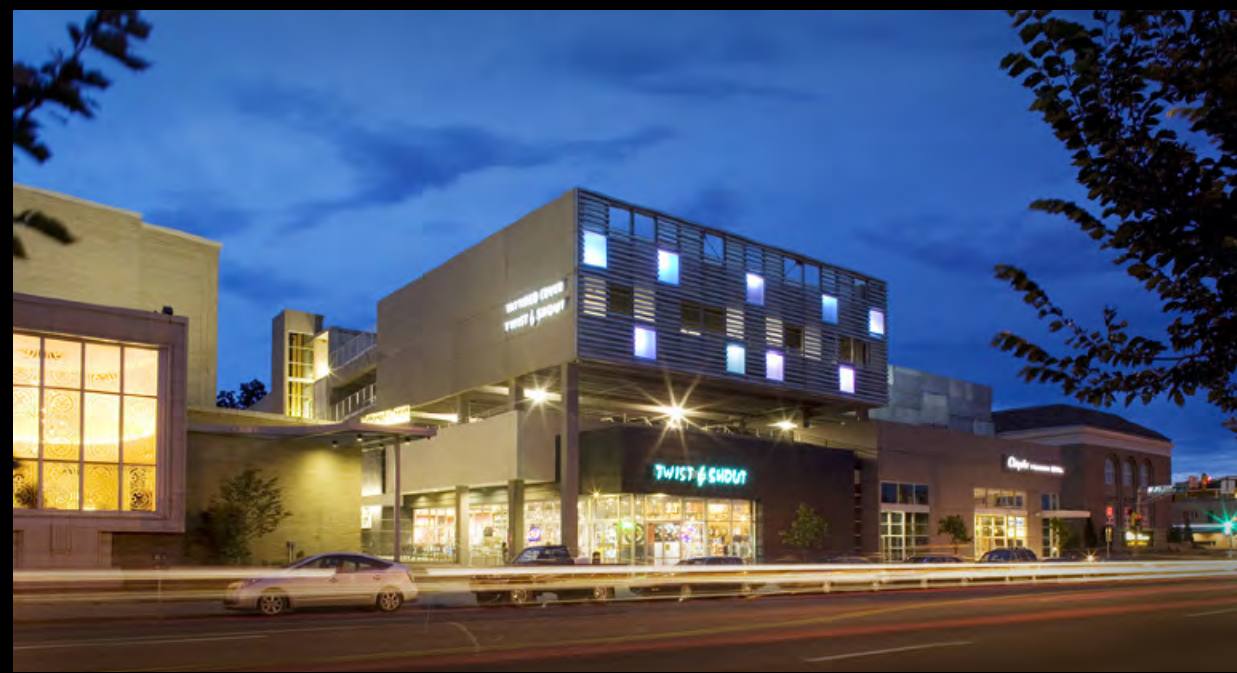




















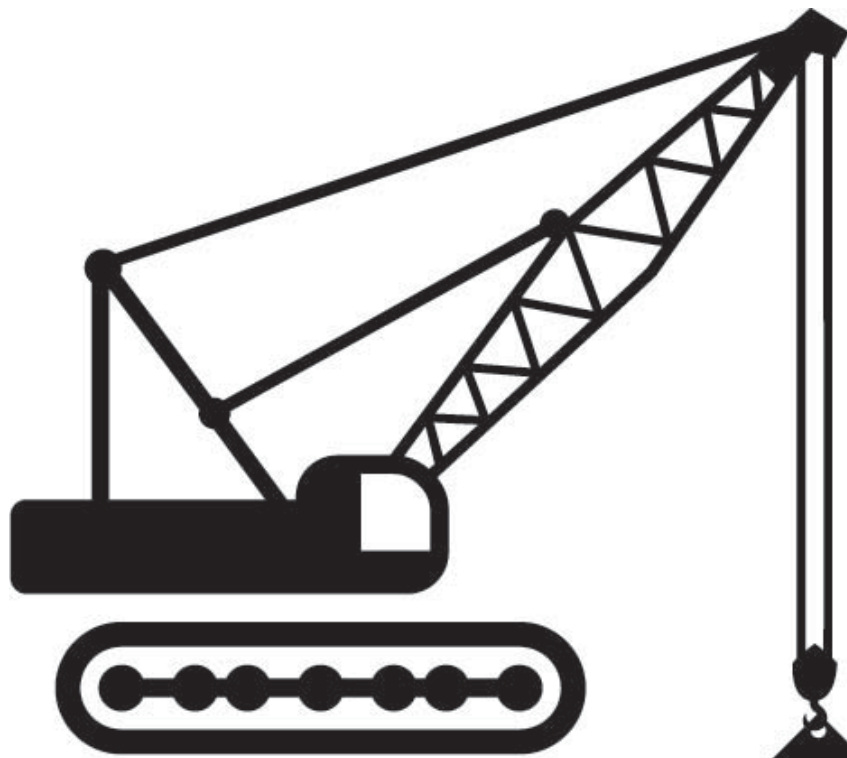




9 dYWWX D\UgY %8Yj Y`cda Ybh

- Block 3: Apartments, Boutique Hotel, Restaurants & Retail
- Block 4: Townhomes, Apartments &/or Condominiums
- Blocks 5&6: Groundfloor Retail, Apartments
- Block 7: Anchor Retail, Office





SLOANS

DENVER'S NEXT GREAT NEIGHBORHOOD
COMING SOON IN 2014