



DENVER
THE MILE HIGH CITY

Denver Parks & Recreation

Proposed Park Designations
4th and 5th Rounds

FOR CITY SERVICES VISIT | CALL
DenverGov.org | **311**



Park System History

- Park System had its origin in 1858 with the cities of Auraria, Denver City and Highland at the confluence of the South Platte River and Cherry Creek
- First park was Curtis Park in 1868
- First Park Board was created in 1893
- The Park Board directed the management and development of the park system until about 1904
- Under Mayor Speer, a charter amendment in 1904 was adopted that created the Department of “Improvements and Parks”
- In 1910 the Mountain Park System was established
- In 1956 the Department of Parks and Recreation was created.
- Parcels that were acquired, developed or treated as a park at this time (1956) became designated under this charter amendment
- Subsequent park designations are accomplished through the City Council ordinance process



Designation Considerations

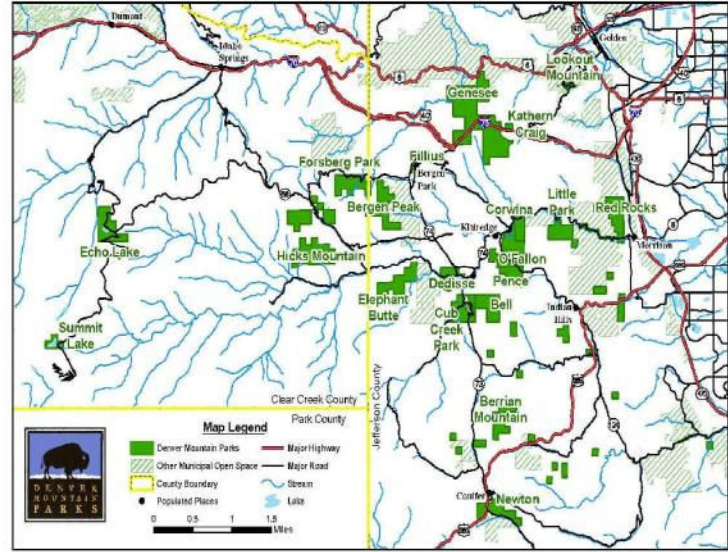
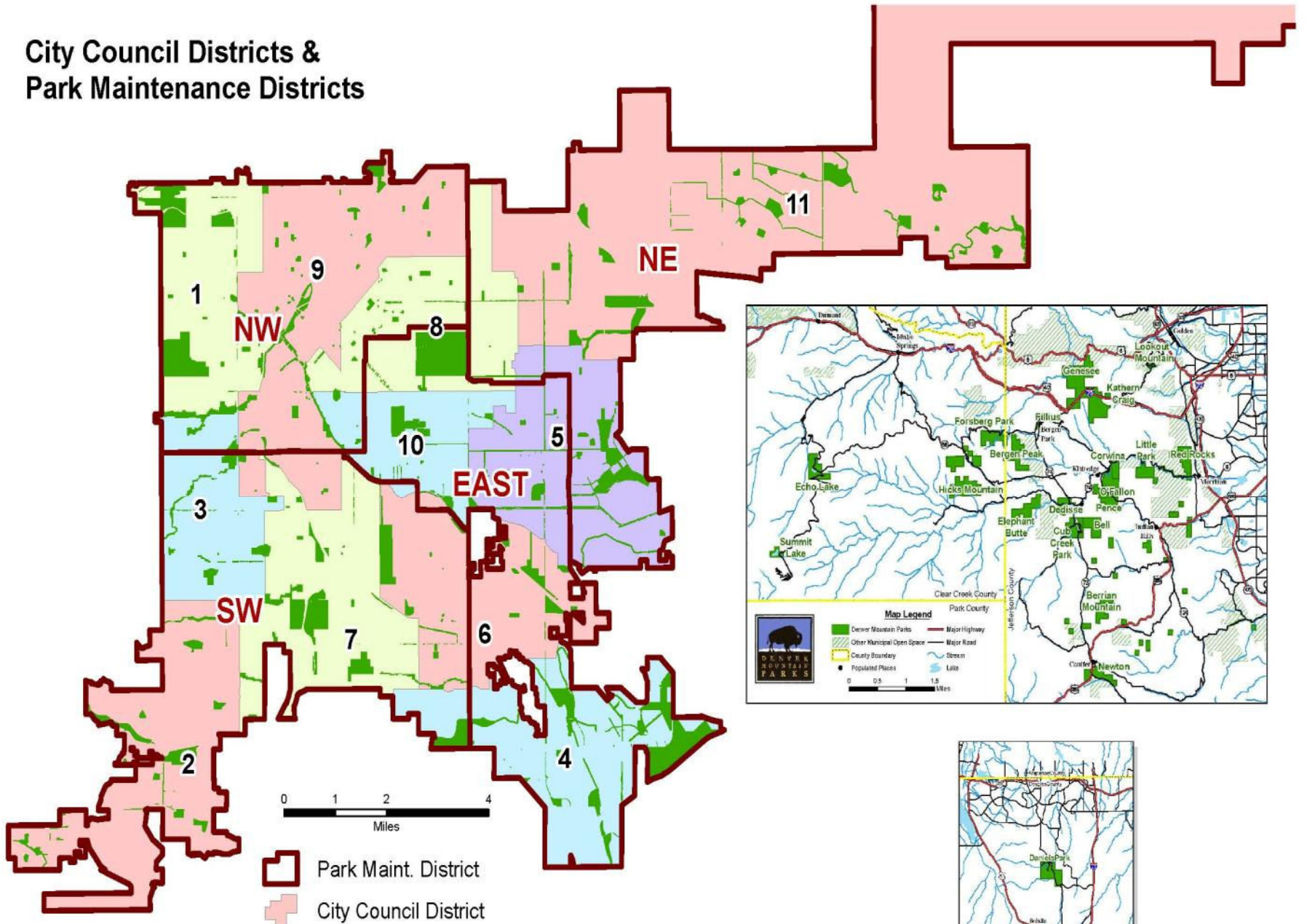
- Supports a master plan (City Park)
- Has historical, cultural, ecological, or educational significance (Civic Center, Cheesman)
- Preservation of key visual corridors or scenic vistas (Cranmer)
- Park facilities have been or are planned to be constructed (13th & Xenia, Cuatro Vientos)
- Area infrastructure / utilities are not in a state of flux that may impact or change the park (Hampden Heights Park)
- There are no title / ownership issues that cast a cloud on the City's title or right to possession of the park
- No pending or anticipated plans for making/expanding non-park uses within the park.



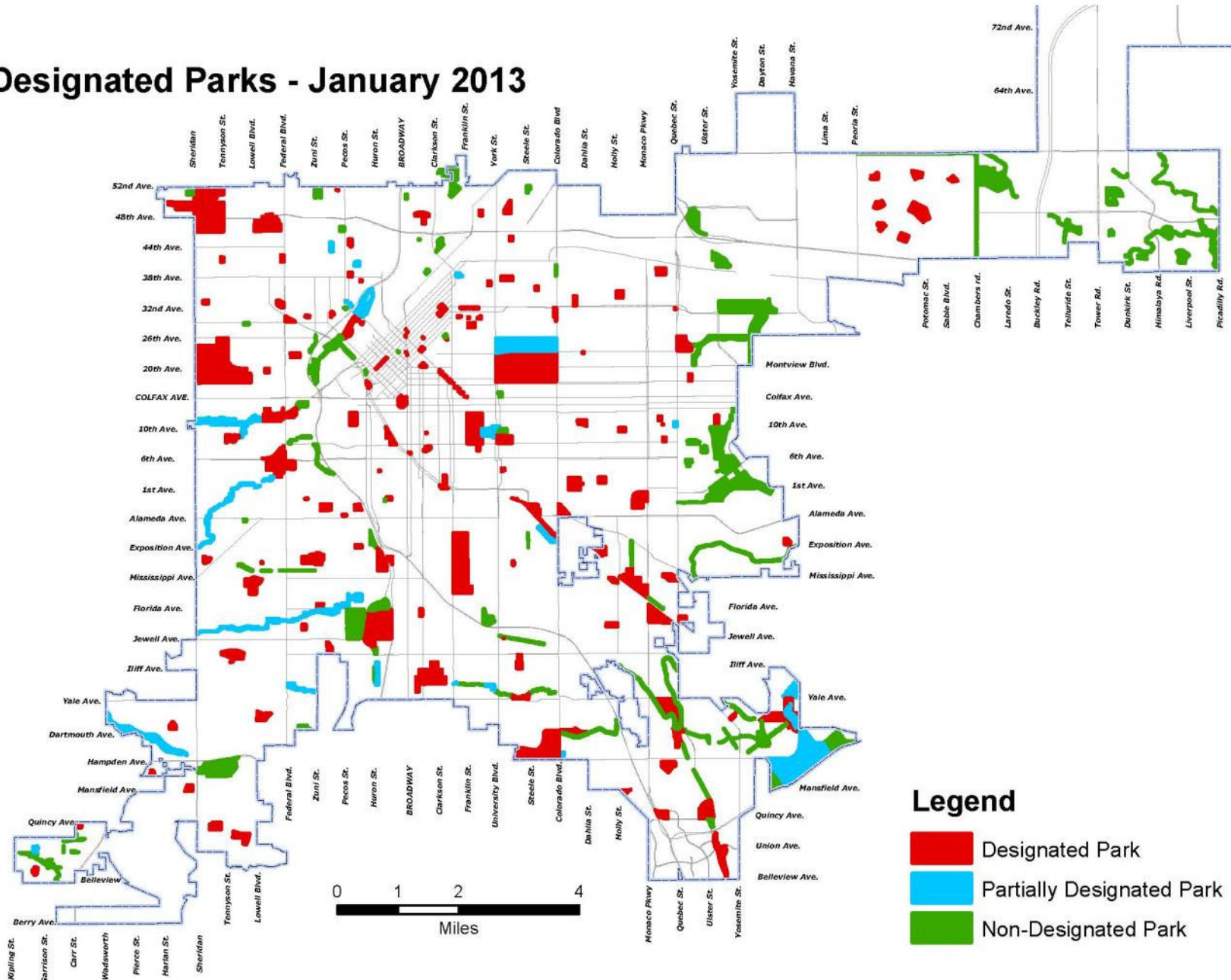
Park Designation Status

- Beginning of 2013
 - Approximately 68% of Parks were already designated
- 1st Round - April 2013
 - Approximately 180 acres became designated
 - Approximately 72% of system designated as parkland
- 2nd Round – January 2014
 - Approximately 275 acres became designated
 - Approximately 78% of system designated as parkland
- 3rd Round – April 2014
 - Approximately 164 acres became designated
 - Approximately 82% of system designated as parkland
- 4th and 5th Rounds – Fall 2014
 - Approximately 97 acres to become designated
 - Approximately 84% of system will be designated as parkland

City Council Districts & Park Maintenance Districts



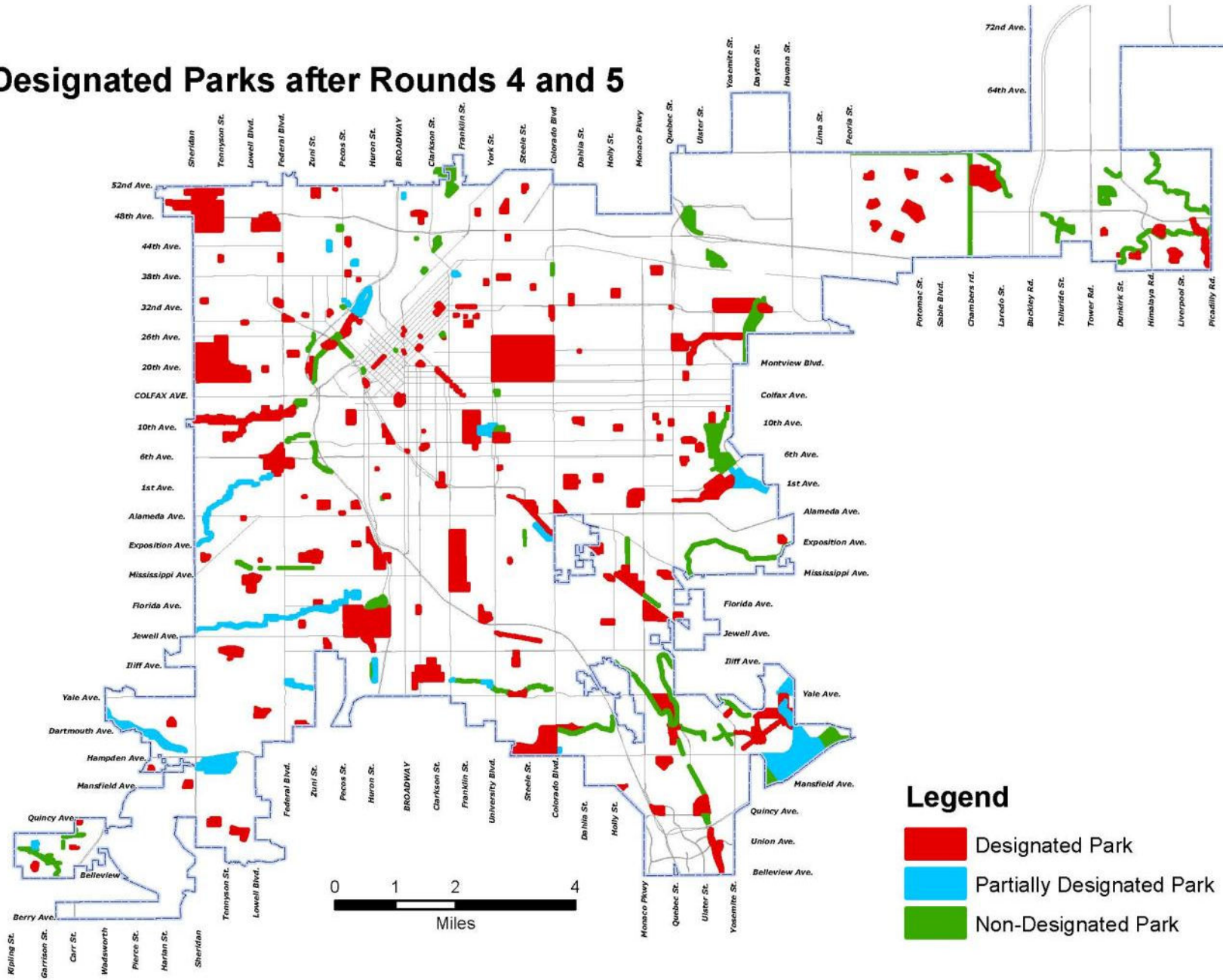
Designated Parks - January 2013



Legend

- Designated Park
- Partially Designated Park
- Non-Designated Park

Designated Parks after Rounds 4 and 5





Designations – Rounds 4 and 5

Proposed Designations - Round 4

LOCATION NAME	PARK TYPE	GIS ACRES	MAINT DIST	COUNCIL DIST
Lakewood / Dry Gulch Park	Community	52.1	NW	3
City of Ulaanbaatar	Neighborhood	5.1	NE	5
Montclair East Park	Community	5.6	NE	5
Highland Senior Center Park	Neighborhood	0.9	NW	1
Stapleton Central Park Addition	Community	10.6	NE	11

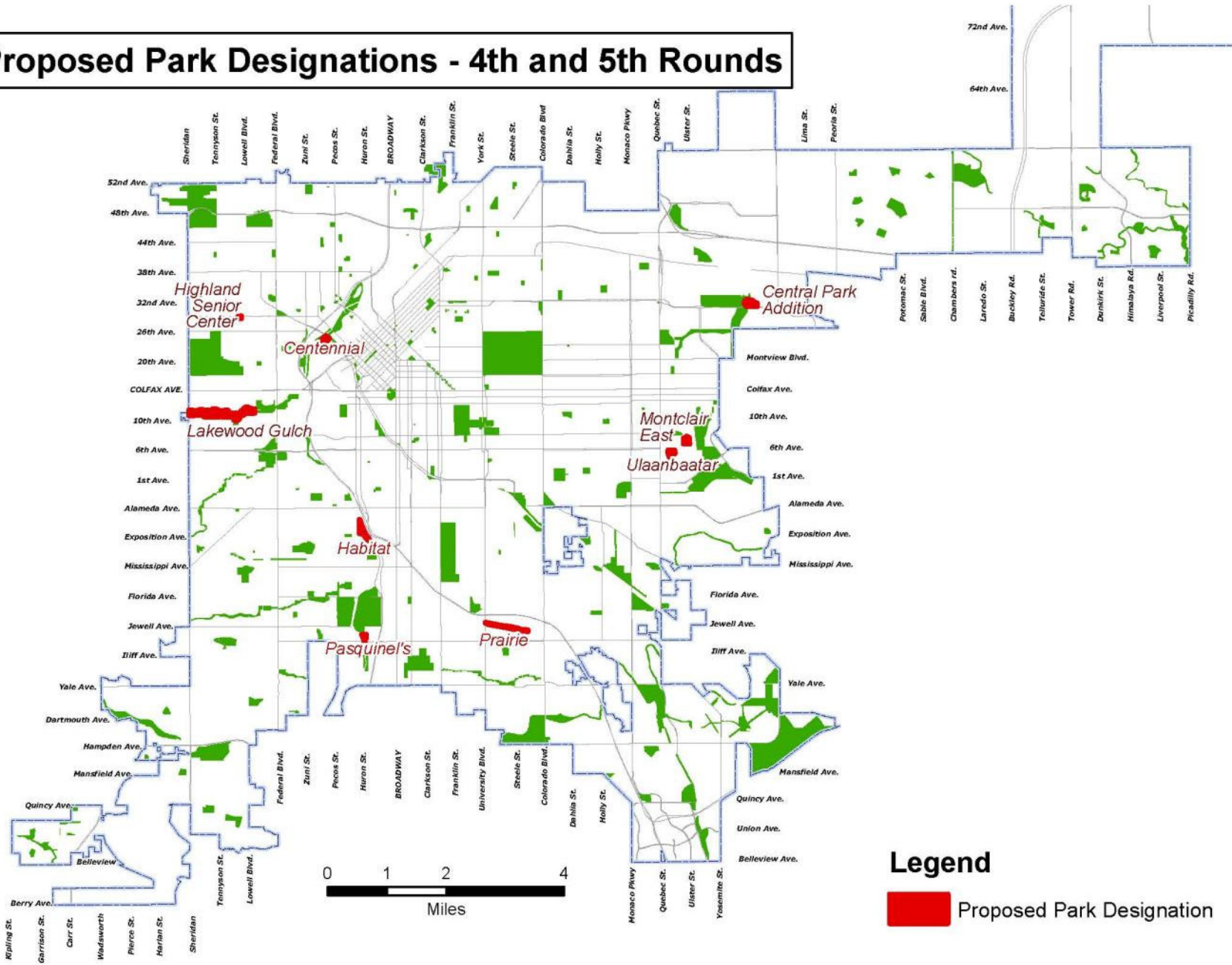
Total Acres:	74
---------------------	-----------

Proposed Designations - Round 5

LOCATION NAME	PARK TYPE	GIS ACRES	MAINT DIST	COUNCIL DIST
Habitat Park	Open Space	7.7	SW	7
Centennial Park	Special Use	5.5	NW	9
Pasquinel's Landing Park	Neighborhood	2.6	SW	7
Prairie Park	Open Space	6.4	SW	6

Total Acres:	22
---------------------	-----------

Proposed Park Designations - 4th and 5th Rounds





Lakewood / Dry Gulch Park

Aerial Imagery - 2012

- Designation Boundary
- Park Boundary

1 inch = 400 feet at 11x17

100
Map Scale In Feet



This graphic is for reference only. The City & County of Denver shall not be liable for damage arising out of the use of this information. The information is provided "as is" without warranty of any kind, expressed or implied, including, but not limited to the fitness for a particular use.



City of Ulaanbaatar Park

Aerial Imagery - 2012

- Designation Boundary
- Park Boundary

1 inch = 80 feet at 11x17
 100
 Map Scale In Feet





This graphic is for reference only. The City & County of Denver, shall not be liable for damage arising out of the use of the information. The information is provided "as is" without warranty of any kind, expressed or implied, including, but not limited to the fitness for a particular use.

Montclair East Park

Aerial Imagery - 2012

- Designation Boundary
- Park Boundary

1 inch = 80 feet at 11x17

100
Map Scale In Feet





Highland Senior Center Park

Aerial Imagery - 2012

- Designation Boundary
- Park Boundary

1 inch = 50 feet at 11x17



100 Map Scale In Feet





Stapleton Central Park Addition

Aerial Imagery - 2012

-  Designation Boundary
-  Park Boundary

1 inch = 100 feet at 11x17
100
Map Scale In Feet





Habitat Park
Aerial Imagery - 2012

- Designation Boundary
- Park Boundary

1 inch = 150 feet at 11x17
100
Map Scale In Feet





Centennial Park

Aerial Imagery - 2012

- Designation Boundary
- Park Boundary

1 inch = 100 feet at 11x17
 100
 Map Scale In Feet





Pasquinel's Landing Park

Aerial Imagery - 2012

- Designation Boundary
- Park Boundary

1 inch = 100 feet at 11x17

100
Map Scale In Feet





This graphic is for reference only. The City & County of Denver shall not be liable for damages arising out of the use of this information. The information is provided "as is" without warranty of any kind, expressed or implied, including, but not limited to the fitness for a particular use.

Prairie Park
Aerial Imagery - 2012

- Designation Boundary
- Park Boundary

1 inch = 250 feet at 11x17
100
Map Scale In Feet



