



**LET'S GO,
COLORADO**
YES ON 110

FUNDING SHORTFALL

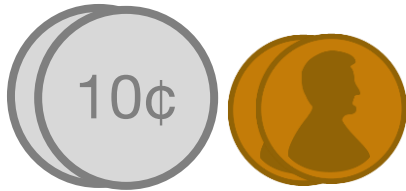
\$1 Billion
Per Year
Shortfall



- Everyone agrees - our roads, bridges and transit systems need a lot of work
- General Assembly has real competing interests
- Gas Tax as a revenue source is diminishing

WHERE IT STARTED

Colorado set the gas tax to 22 cents per gallon in 1991.



The gas tax is the primary in-state revenue source for road repair, maintenance and construction

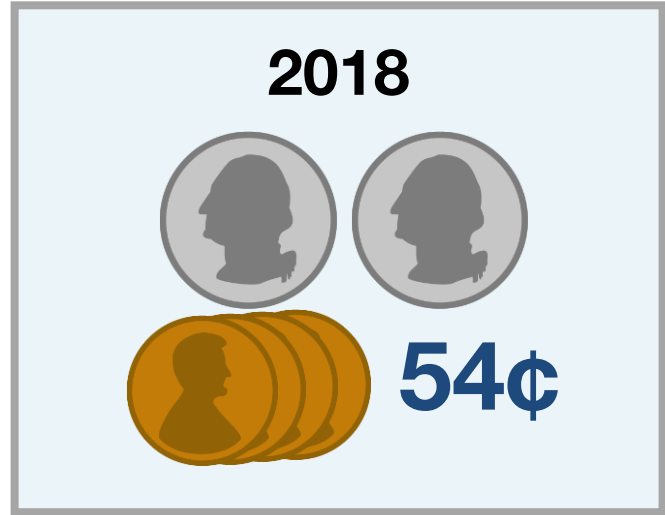
In 1991, in Colorado ...

- 3,387,000 people lived here
- Coloradans drove a combined 28 billion miles
- **Colorado spent \$126 per driver**

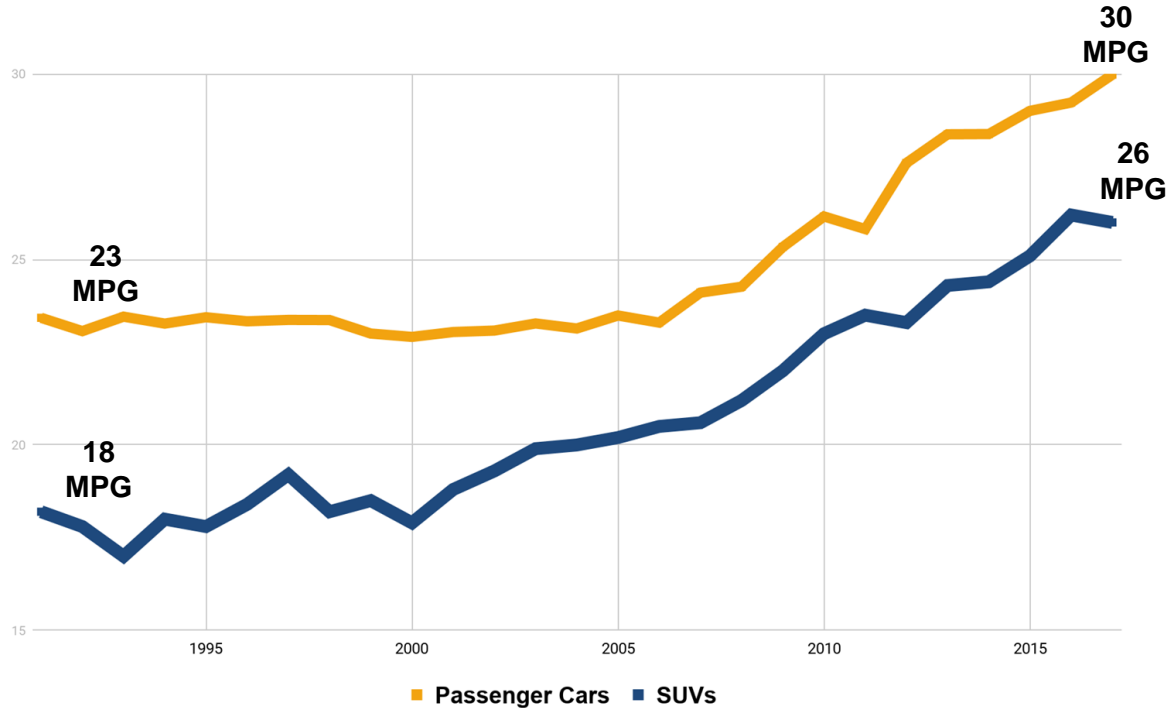
DECREASING PURCHASING POWER



=



INCREASING FUEL EFFICIENCY

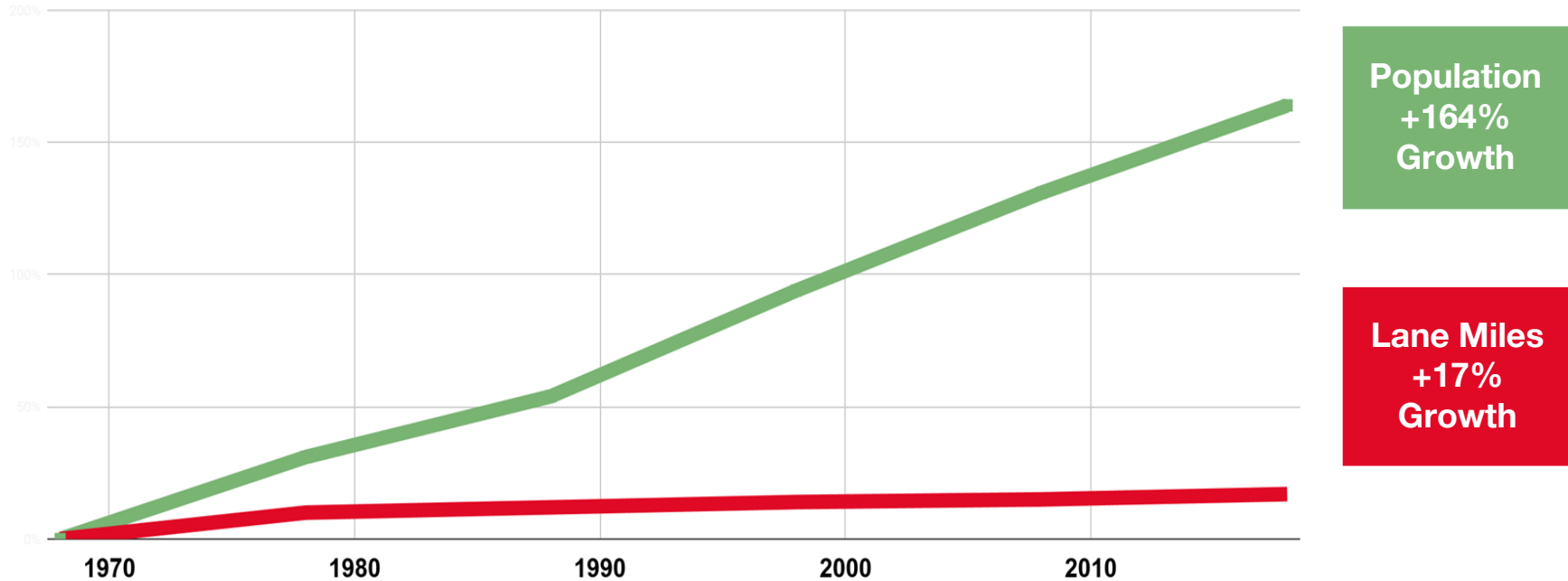


Average increase
in fuel efficiency = less
revenue for
transportation

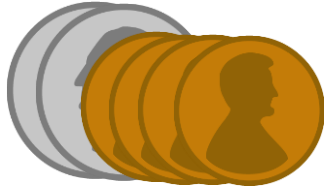
18%

GROWING POPULATION

Percent Change in Lane Miles and Population



PUTTING IT ALL TOGETHER



- \$9 billion in outstanding projects
- Spending-per-driver cut in half (**\$69 per person**)
- Population boom with no expansion leads to statewide gridlock

0.62 SALES TAX



\$767 million

First year, statewide revenue from sales tax

\$6 billion

Bond principal for state projects

20 Years

This tax will sunset after 20 years

- Raises enough to address the problem
- A small amount that adds up
- Everyone pays the same rate, including tourists

BIPARTISAN STATEWIDE COALITION

Chambers of Commerce & Economic Development

Boulder Chamber of Commerce

Denver Metro Chamber of Commerce

Downtown Denver Partnership

Metro North Chamber of Commerce

Colorado Black Chamber of Commerce

Hispanic Chamber of Commerce

Adams County Economic Development

Denver South Economic Development Corporation

Jefferson County Economic Development Corporation

Lincoln County Economic Development Corporation

Metro Denver Economic Development Corporation

Yuma County Economic Development

Business Community

Caddis, LLC

Castle Rock Construction Company

Dent Kore, LLC

Duckels Construction

FulcrumOne

HDR, Inc.

Kraemer North America

KR Swerdfeger Construction

Lawrence Construction Company

Martin Marietta

Mountain Grit

Muller Engineering

PK Electric, Inc.

RS&H, Inc.

SilversJacobson, LLC

South Platte Investments & Planning

Transpro Burgener Trucking

United Companies

VR Business Brokers

Wagner Equipment Company

Worldwide Rental Services

WSP

Associations

American Concrete Pavement Association

American Council of Engineering Companies

American Heart Association

Associated General Contractors

Building Jobs 4 Colorado

Colorado Asphalt Pavement Association

Colorado Association of Home Builders

Colorado Association of Realtors PAC

Colorado Association of Transit Agencies

Colorado Bankers Association

Colorado Gaming Association

CoPIRG

Colorado Rural Electric Association

I-70 Coalition

LiveWell Colorado

Mountain View Electric Association, Inc.

Ports to Plains Alliance

Western Colorado Contractors Association

BIPARTISAN STATEWIDE COALITION

Counties

Boulder County

Eagle County

Gunnison County

Gilpin County

San Miguel County

Municipalities

City of Lone Tree

City of Wheat Ridge

Town of Bow Mar

City of Lafayette

Town of Limon

Town of Sheridan

City of Thornton

Local Electeds

Personal Endorsements - 97

Mayors

Marc Williams, **Arvada**

Bob LeGare, **Aurora**

Royce Pindell, **Bennett**

Suzanne Jones, **Boulder**

Tom Feldkamp, **Bow Mar**

Ken Kreutzer, **Brighton**

Tera Radloff, **Castle Pines**

Laura Chrisman, **Cherry Hills Village**

Sean Ford, **Commerce City**

Michael Hancock, **Denver**

Laura Keegan, **Edgewater**

Daniel Dick, **Federal Heights**

Marjorie Sloan, **Golden**

Ron Rakowsky, **Greenwood Village**

Christine Berg, **Lafayette**

Adam Paul, **Lakewood**

Debbie Brinkman, **Littleton**

Jackie Millet, **Lone Tree**

Connie Sullivan, **Lyons**

Carol Dodge, **Northglenn**

Tara Bieter-Fluhr, **Sheridan**

Clint Folsom, **Superior**

Heidi Williams, **Thornton**

Bud Starker, **Wheat Ridge**

State Government Officials

Governor John Hickenlooper

Senator Steve Fenberg

Senator Andy Kerr

Senator Dominick Moreno

Senator Kevin Priola

Senator Rachel Zenzinger

Senator Cheri Jahn

Senator Nancy Todd

Senator Matt Jones

Representative Chris Hansen

Representative Dylan Roberts

Representative Edie Hooton

Representative Pete Lee

Representative Chris Kennedy

Representative Susan Lontine

Representative Brittany Pettersen

Representative Barbara McLachlan

RTD Board Member Judy Lublow

BIPARTISAN STATEWIDE COALITION

Regional Organizations

Club 20
Colorado Municipal League (CML)
Commuting Solutions
Counties and Commissioners Acting Together (CCAT)
Gunnison Valley RTA
Move Colorado
North Area Transportation Alliance
Phillips County GOP
Pro 15
Smart Commute Metro North
US 36 Mayors & Commissioners Coalition

Environmental Groups

Conservation Colorado
Southwest Energy Efficiency Partnership (SWEET)
Bicycle Colorado

Agriculture

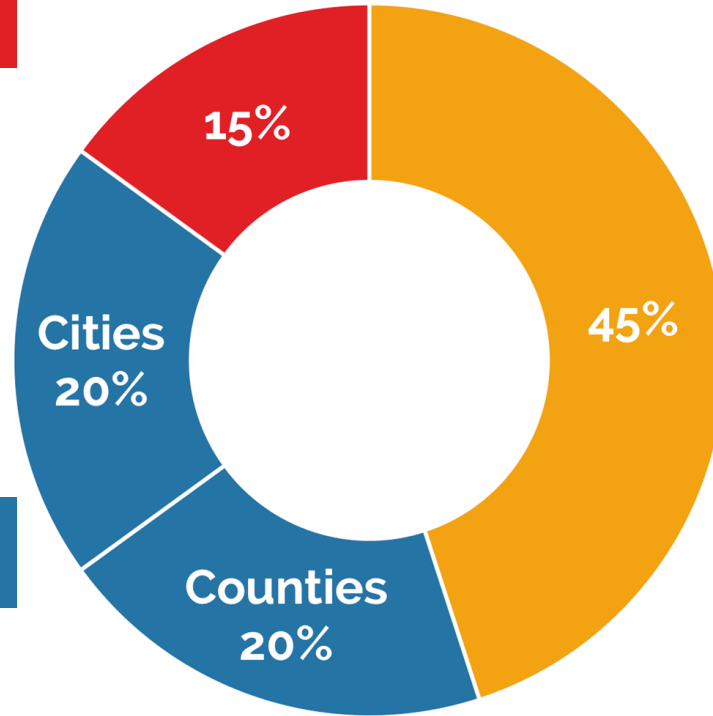
Colorado Association of Wheat Growers
Colorado Cattlemans' Association
Colorado Corn Growers Association
Colorado Dairy Farmers
Colorado Farm Bureau

Unions

Colorado AFL-CIO
Colorado Association of Mechanical & Plumbing Contractors
Colorado Fraternal Order of Police
Laborers' International Union of North America (LIUNA)
Mechanical Contractors Association of Colorado (MCA)
Mechanical Service Contractors Association of Colorado (MSCA)
Rocky Mountain Farmers Union

SYSTEMWIDE IMPROVEMENTS

Multimodal Transportation
Options Fund



State Highway Fund

Local Transportation
Priorities Fund

STATE



Reduce Congestion and Improve Infrastructure by widening lanes, adding passing lanes, improving interchanges, and creating alternative modes of transportation

Improve Safety by adding or widening shoulders, replacing bridges and building wildlife crossings

LOCAL



Fully Flexible Funds allocated to every city and county to support projects, such as:

- Street or intersection improvements
- Transit infrastructure or operating
- Sidewalks, pedestrian bridges or bike lanes

MULTIMODAL



Projects at the **State and Local Level**, including a match program for local communities.

Projects could include:

- Bustang
- Regional bike and pedestrian paths
- Dial-a-rides
- Disability services

STATE PROJECTS



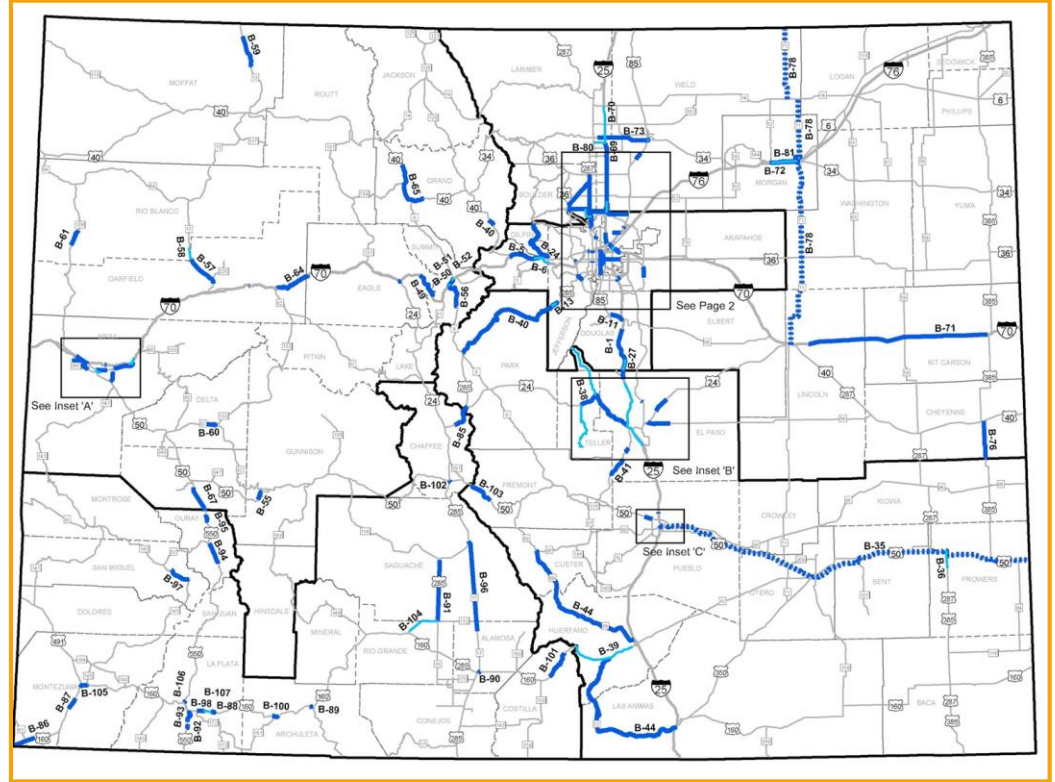
Address CDOT's strategic priority investment program - **107 projects**



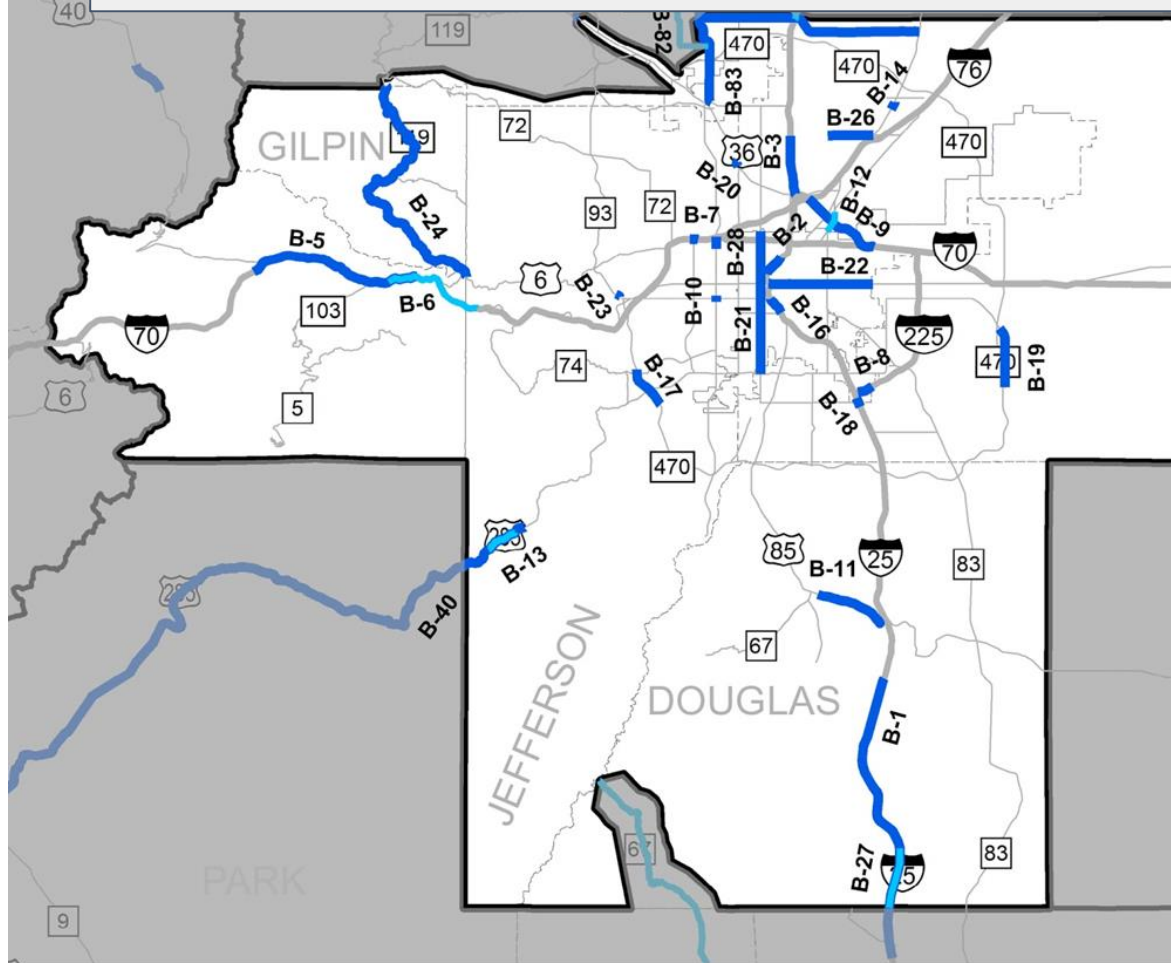
Bond against new revenue to immediately start critical projects

5 CDOT Regions

1. South Denver Region
2. Colorado Springs and Southeast Region
3. Western Slope Region
4. Northeast Region
5. Southwest Region



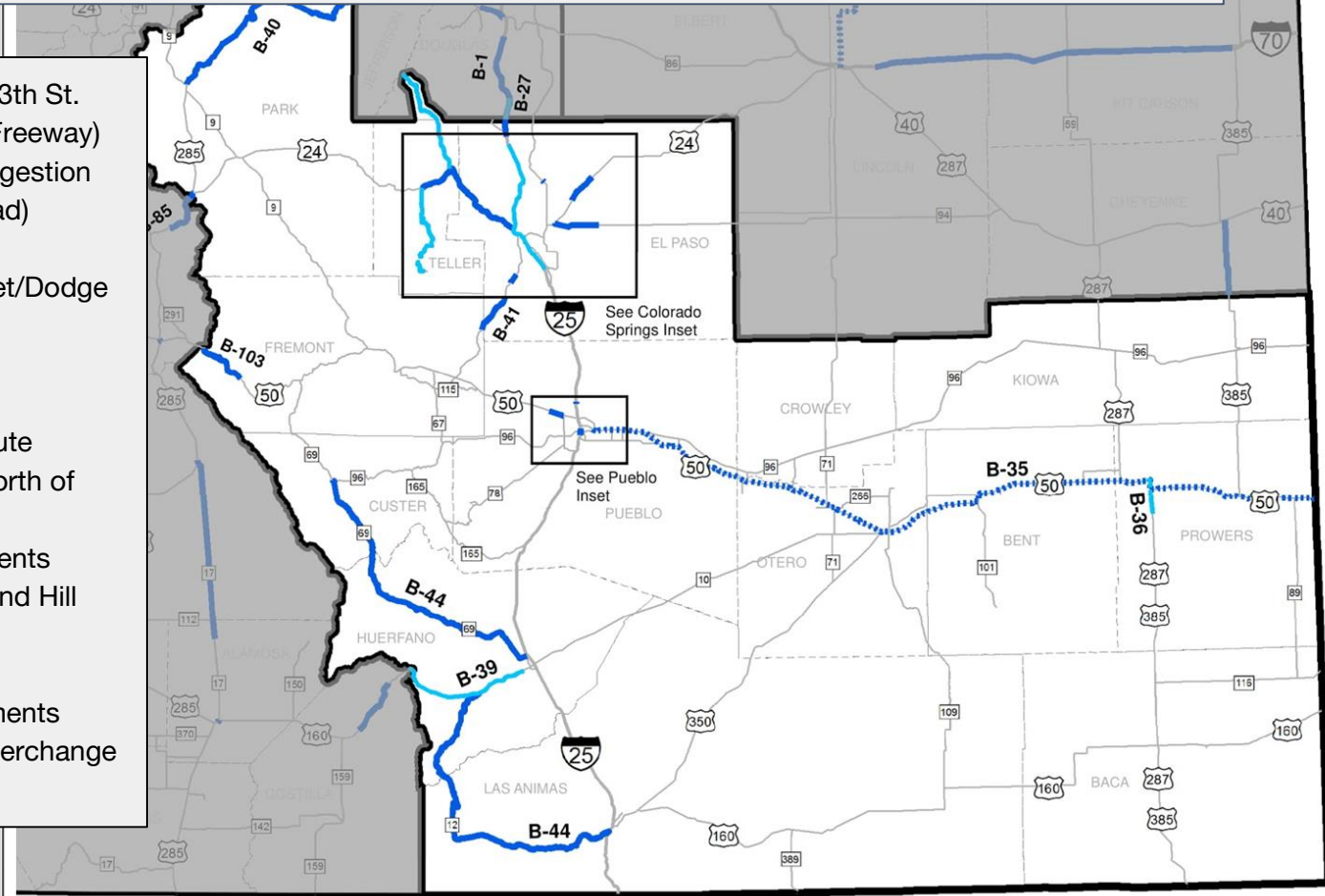
REGION 1 PROJECTS



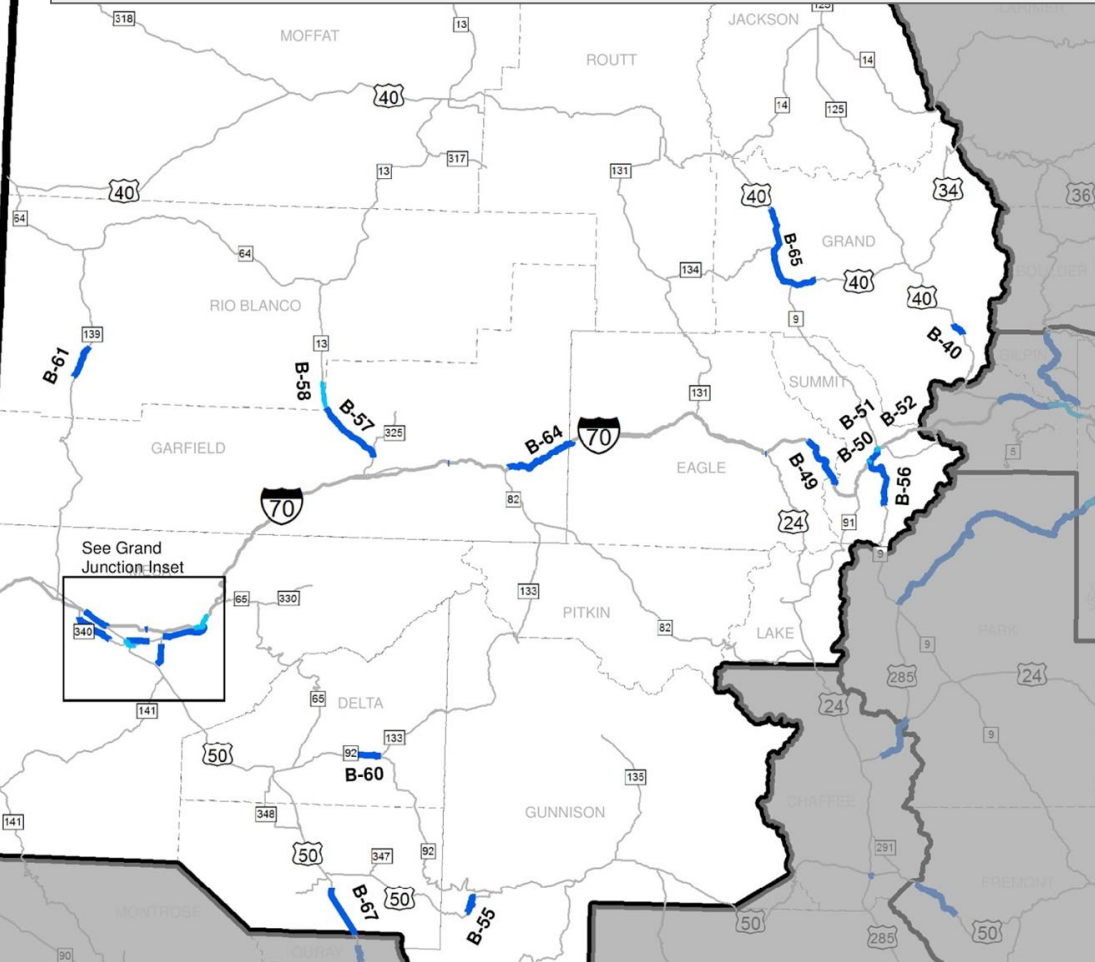
- I-25: Speer and 23rd Bridges
- I-25 North: 84th Ave to Thornton Parkway Widening
- I-25 North: TEL Expansion
- I-70 West: Westbound Peak Period Shoulder Lanes
- I-70 West: Floyd Hill
- I-70: Kipling Interchange
- I-225: I-25 to Yosemite
- I-270: Widening from I-76 to I-70
- US 6: Wadsworth Interchange
- US 85: Sedalia to Meadows Widening
- US 85/Vasquez: I-270 to 62nd Ave. Interchange
- US 285: Richmond Hill to Shaffer's Crossing
- US 85: 120th Grade Separation
- CO 7 Corridor Improvements
- I-25: Valley Highway Phase 3.0
- C-470: 285 and Morrison Road
- I-25/Belleview
- **11 More Projects**

REGION 2 PROJECTS

- 1-25: City Center Drive to 13th St. (Phase of the New Pueblo Freeway)
- I-25: Colorado Springs Congestion Relief (SH 16 to Baptist Road)
- US 24 West: Divide to 1-25
- US 24 East: Widening Garret/Dodge to Stapleton Road
- US 50: West of Pueblo
- US 50: East Widening
- US 287: Lamar Reliever Route
- SH 67: Victor to Divide & North of Woodland Park
- US 160: Mobility Improvements
- US 285: Fairplay to Richmond Hill
- SH 115: Rock Creek Bridge Replacement and Widening
- SH 69 and SH 12 Improvements
- I-25 and Drew Dix/Dillon Interchange
- **3 More Projects**



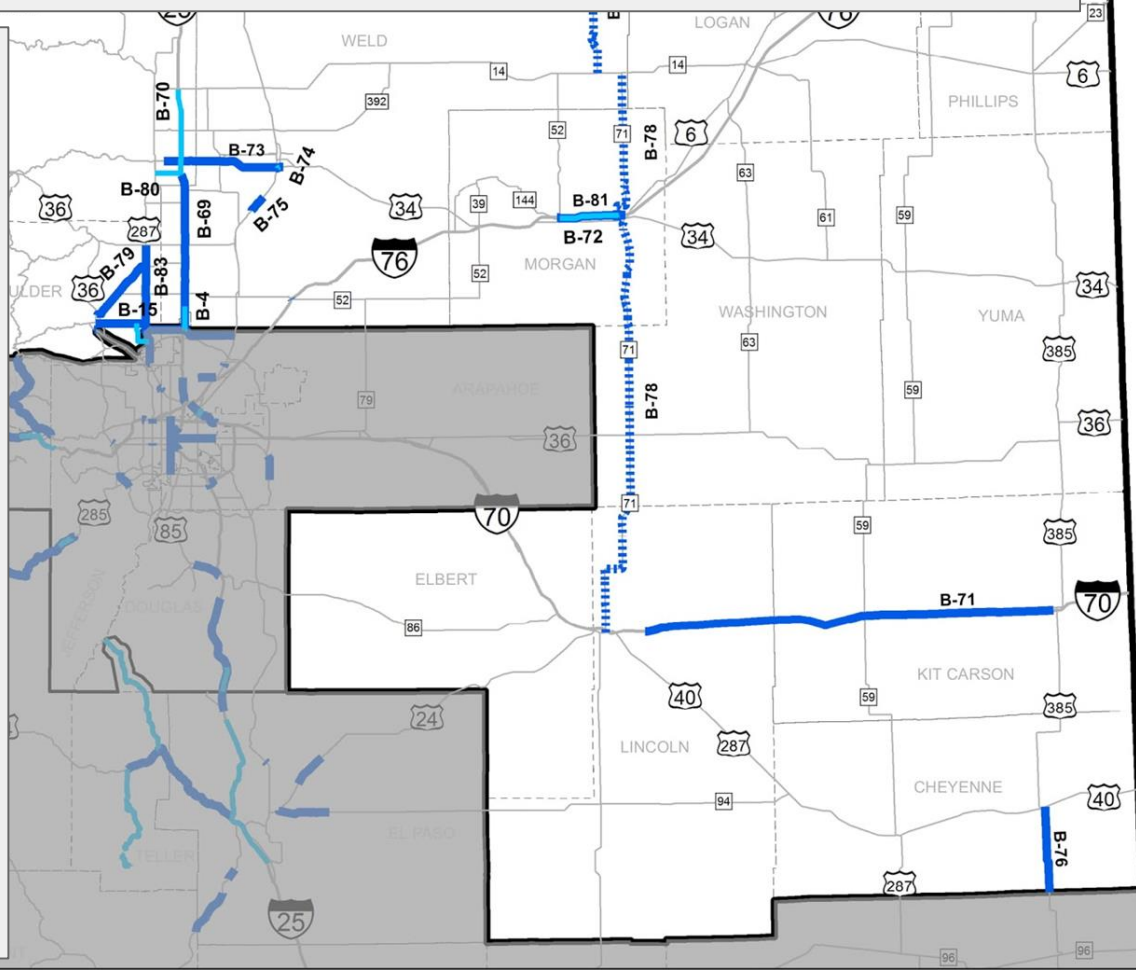
REGION 3 PROJECTS



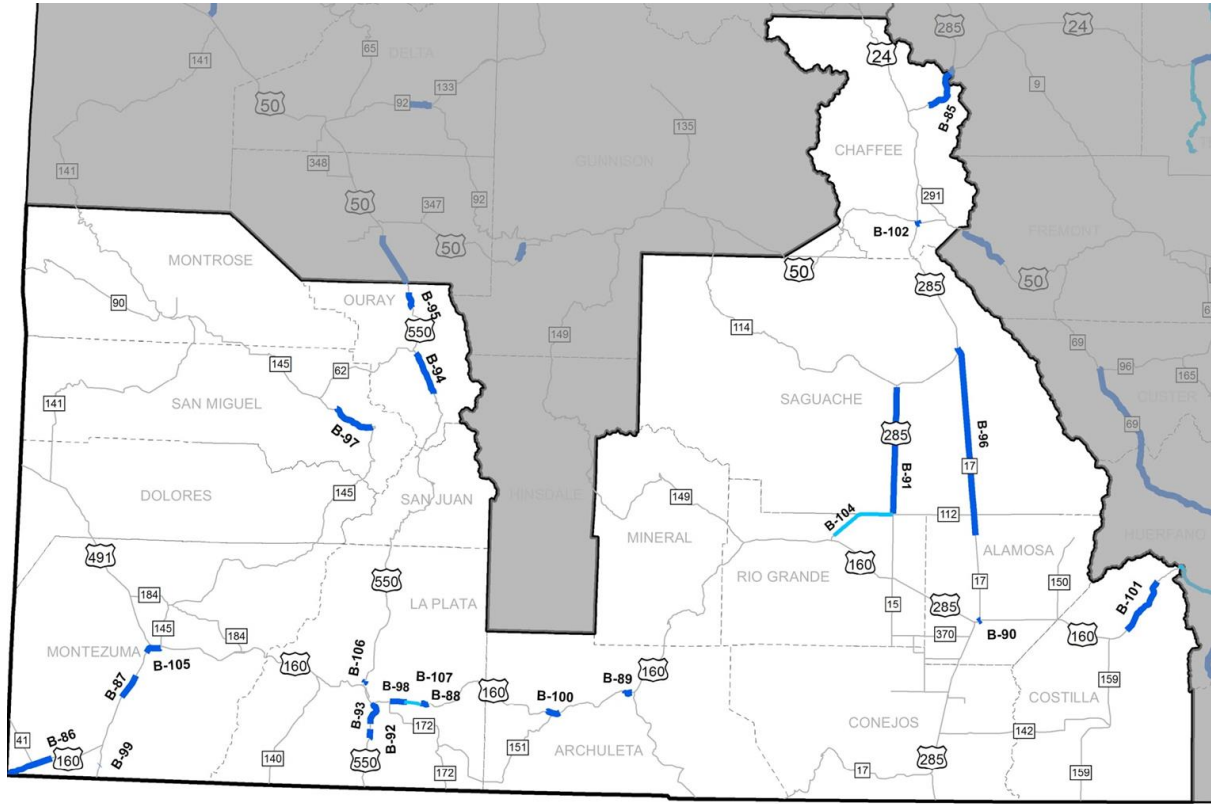
- I-70: Business Loop
- I-70: Palisade to Debeque
- I-70 West: Dowd Canyon Interchange
- I-70 West: Vail Pass
- I-70 West: Exit 203 Interchange Improvements
- I-70 West: Frisco to Silverthorne Auxiliary Lane
- I-70 West: Silverthorne Interchange
- US 40: Fraser to Winter Park
- US 50: Little Blue Canyon
- SH 9: Frisco North
- SH 13: Rifle North
- SH 13: Rio Blanco to County Line Shoulders and Passing Lanes
- SH 13: Wyoming South
- SH 139: Little Horse South
- I-70: Garfield County Interchange Improvements (New Castle)
- I-70: Glenwood Canyon Bridge Rail & Pavement
- US 40: Kremmling East and West Phase I
- **6 more projects**

REGION 4 PROJECTS

- I-25 North: SH 66 to SH 402 (Segments 5 & 6)
- I-25 North SH 402 to SH 14 (Segments 7 & 8)
- I-70: Replace Failing Pavement
- I-76: Fort Morgan to Brush: Phase 4
- US 34: Widening
- US 34 / US 85 Interchange Reconfiguration
- US 85: Corridor Improvements
- US 385
- SH 52 Interchange in Hudson
- SH 71 Super 2
- SH 119: Downtown Boulder to Downtown Longmont
- SH 402: Widening, Intersection, and Safety Improvements
- I-76: Fort Morgan to Brush Phase 5
- SH 42: Safety and Intersection Improvements including 95th Street
- US 287- from SH 66 to US 36
- US 36/28th Street and SH 93/Broadway



REGION 5 PROJECTS



- US 24: Safety and Mobility Improvements on Trout Creek Pass - Phase II
- US 160: Reconstruction, Shoulders
- US 160: Towaoc Passing Lanes
- US 160: Dry Creek Passing and Mobility Improvements
- US 160: Pagosa Reconstruction and Multi-Modal Improvements
- US 285: Safety and Mobility Improvements between Center to Saguache
- US 550/US 160 Connection
- US 550: Ridgway to Ouray Shoulder Widening
- US 550: Shoulder Improvements, Deer Fencing and Animal Underpasses
- SH 145: Safety and Mobility Improvements
- US 50 Passing Lanes
- US 160 Safety and Mobility Improvements CR 225 to Dry Creek
- **9 more projects**

LOCAL PRIORITIES



New dollars dedicated to municipal and county transportation projects



Projects selected by local leaders, not mandated by the state

Potential Local Projects to Fund:

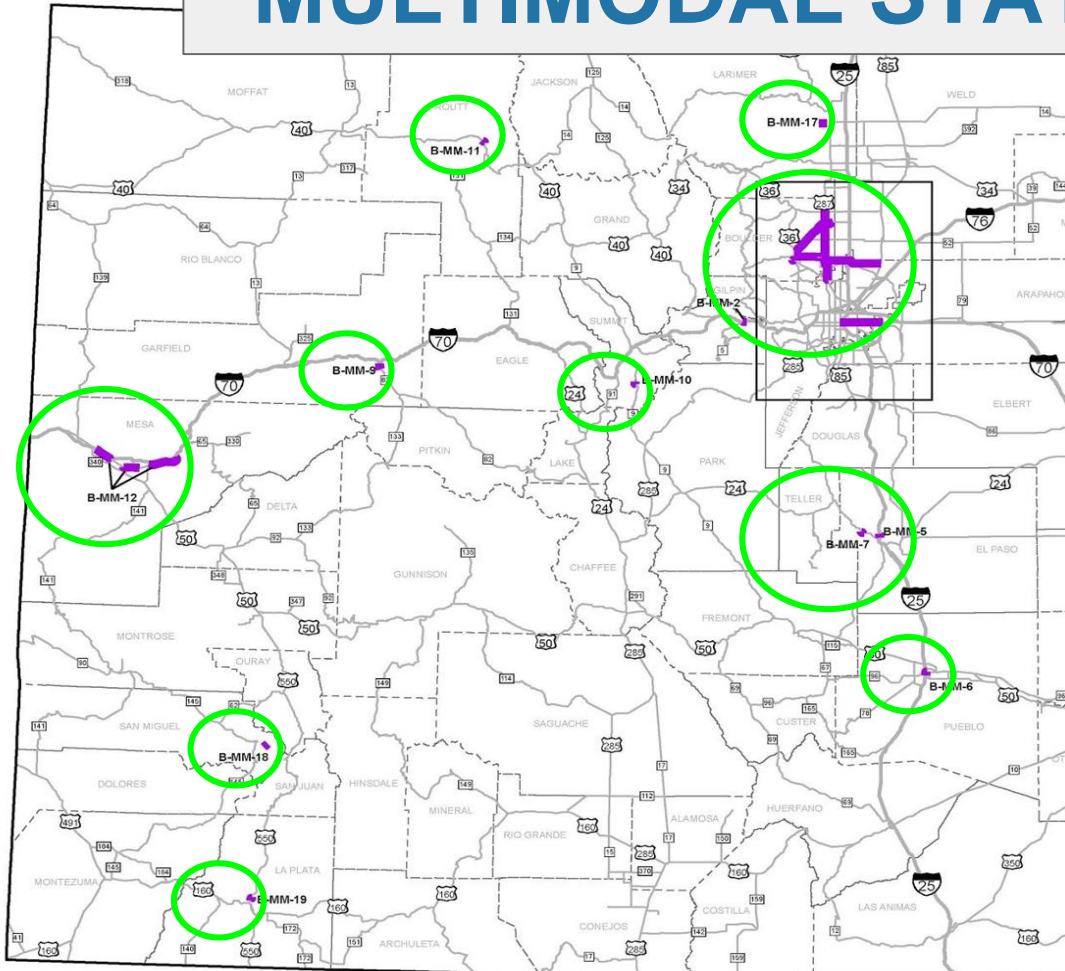
- ✓ Street repaving and pothole repair
- ✓ Matching for state projects
- ✓ New intersections
- ✓ Lane widening
- ✓ Shoulders
- ✓ Bridge repair
- ✓ Sidewalks
- ✓ Bike lanes
- ✓ Transit projects

MULTI-MODAL MOBILITY



- ✓ Leverage state and local dollars for projects
- ✓ Fund local multimodal projects across the state
- ✓ Fund large scale, statewide projects **directly from a strategic list**

MULTIMODAL STATE PROJECTS



- East Colfax BRT
- Idaho Springs Parking and Transit Center
- SH 7, Downtown Boulder to Downtown Brighton
- US 6 Peaks to Plains Trail
- Colorado Springs Downtown Transit Center
- Pueblo City Transit Maintenance and Administration Facility
- Manitou Springs Transit Hub
- North Avenue (US 6) Corridor Improvements (Grand Junction)
- RFTA Glenwood Maintenance Facility Expansion
- Breckenridge Transit Station Rebuild
- Steamboat Springs Transit Center Renovation
- US 6 Corridor Transit Improvements (Mesa County)
- US 287- from SH 66 to US 36
- SH 42/95th Street
- US 36/28th Street and SH 93/Broadway
- SH 119- Downtown Boulder to Longmont
- Fort Collins West Elizabeth BRT
- Transit System Replacement between Mountain Village and Telluride
- Transit and ADA Accessibility Upgrades (Durango)

ADDING IT ALL UP



Create a reliable revenue stream to support and complete state transportation projects



Allocate funding to local communities across the state and give them the authority to make transportation decisions



Prioritize rural and urban multimodal mobility



**LET'S GO,
COLORADO**
YES ON 110