



---

# Irving P. Andrews House


2241-43 York St

Land Use, Transportation and Infrastructure

Becca Dierschow, Senior City Planner, Community Planning and Development  
July 25, 2023



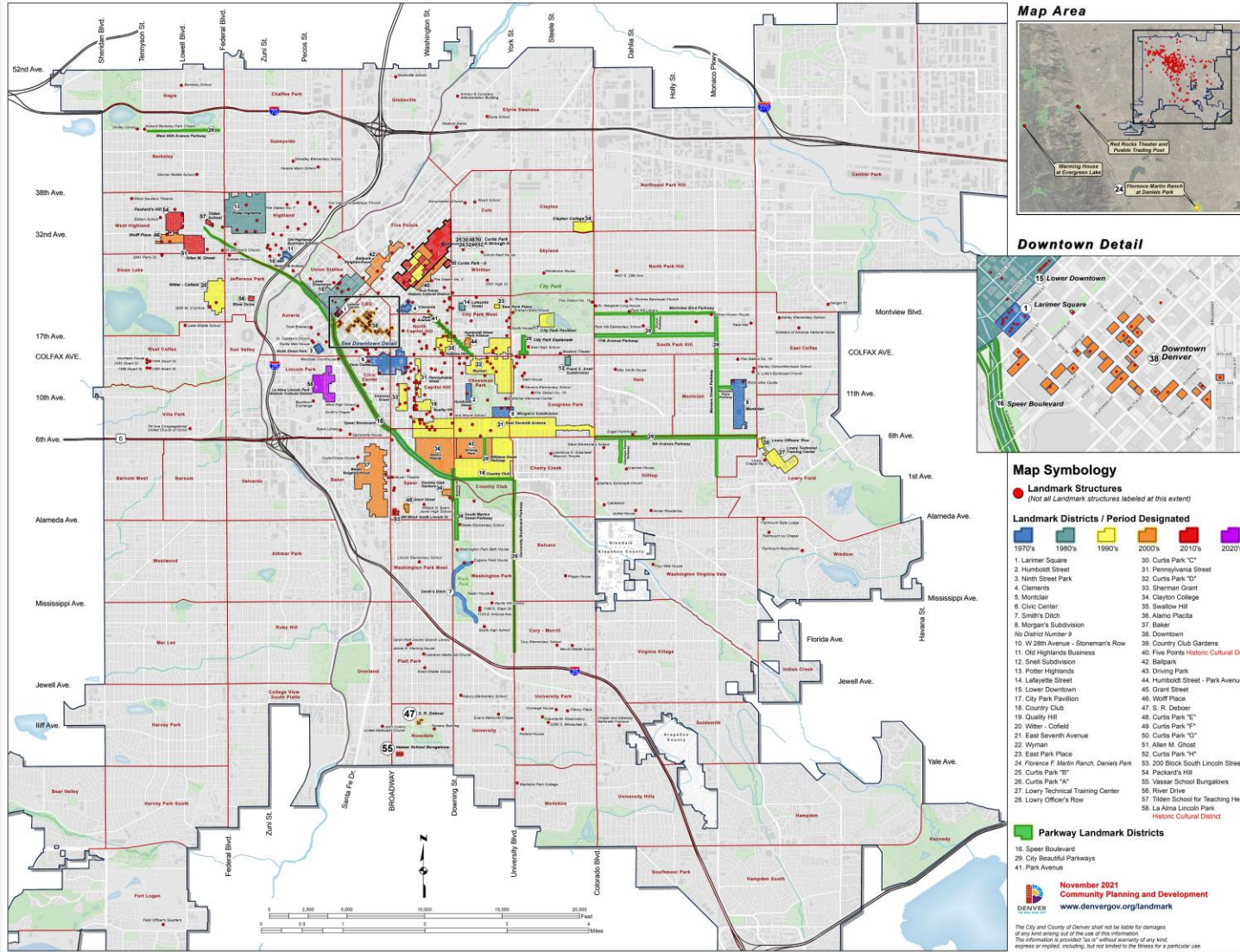
# 1967 Landmark Preservation Ordinance



- Purpose:
  - Designate, preserve, and protect
  - Foster civic pride
  - Stabilize and improve aesthetic and economic vitality
  - Promote good urban design

“It is the sense of the council that the economic, cultural and aesthetic standing of this city cannot be maintained or enhanced by disregarding the historical, architectural and geographic heritage of the city and ignoring the destruction or defacement of such cultural assets.”

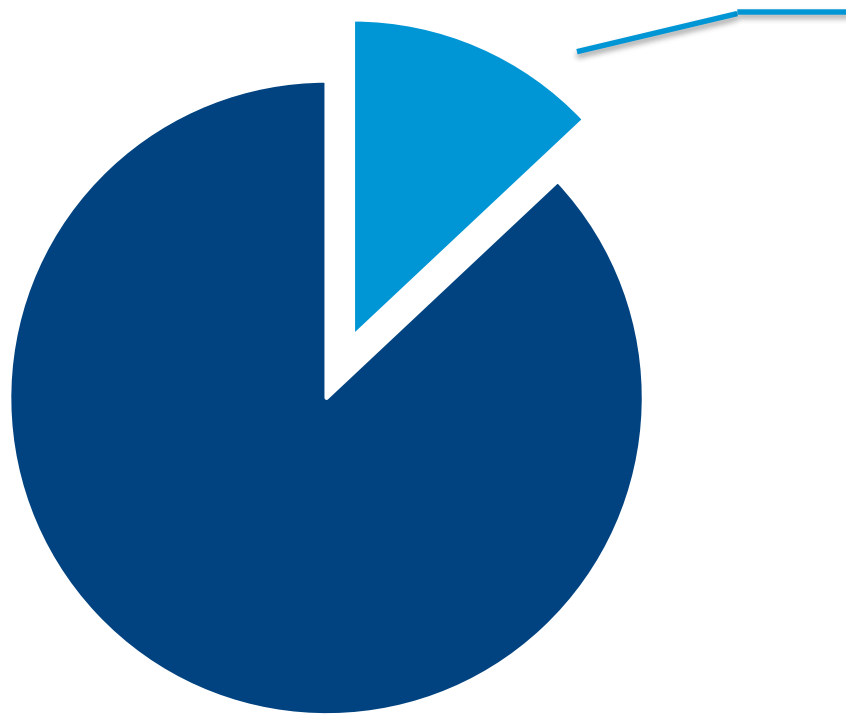
## Denver Historic Districts and Landmark Structures



# Individual Landmarks and Historic Districts

- 360 Individual Landmarks
- 59 Historic Districts
- ~ Total 7,200 landmark buildings
- ~ 160,000 buildings within the city
- District composition
  - Primarily residential districts
  - Five commercial or downtown districts
  - Three Historic Cultural districts

# Lack of Diversity in Denver's Designations



- 13% = Designations explicitly including historically excluded communities
- 87% = Local Landmarks focused on history of white males

# Properties Associated with historically excluded communities

~7200 Designated Buildings

## Landmarks associated with LGBTQ history or culture:

- First Unitarian Society of Denver

## Landmarks associated with women's history or culture:

- Dr. Margaret Long House
- Emily Griffith Opportunity School
- Denver Women's Press Club
- Treat Hall, Colorado Women's College
- Molly Brown House
- Mattie Silks House
- Wolcott School
- Jane Silverstein Ries House
- Margery Reed Mayo Nursery
- Packard's Hill Historic District

## Landmarks associated with Latino/a/x history or culture:

- Our Lady of Guadalupe Church
- Ninth Street Historic District
- La Alma Lincoln Park Historic Cultural District
- La Raza Park Historic Cultural District

## Landmarks associated with Jewish history or culture:

- Golda Meir House
- Temple Emanuel
- Emmanuel-Sherith Israel Chapel

## Landmarks associated with African-American history or culture:

- Five-Points Historic Cultural District
- American Woodmen's Life Building
- Shorter AME Church
- Fire Station #3
- Zion Baptist Church of Denver
- Barney Ford Building
- Justina Ford House (Curtis Park)
- Scott Methodist Church

### Vital Data:

- Neighborhood: City Park West
- Council District: #10, Chris Hinds
- Zoning: U-TU-B
- Proposed boundary:
- Lots 25 and 26, excepting the rear 8 feet thereof, block 24, McCullough’s Addition to Denver, City and County of Denver





# Landmark Designation Eligibility

The structure or district must meet the following criteria \*:

- 1. Maintains its integrity
- 2. More than 30 years old, or is of exceptional importance
- 3. Meets at least three of ten criteria
- 4. The LPC considers the historic context

\*Per Landmark Preservation Ordinance (Chapter 30, DRMC)



## Landmark Designation Criteria

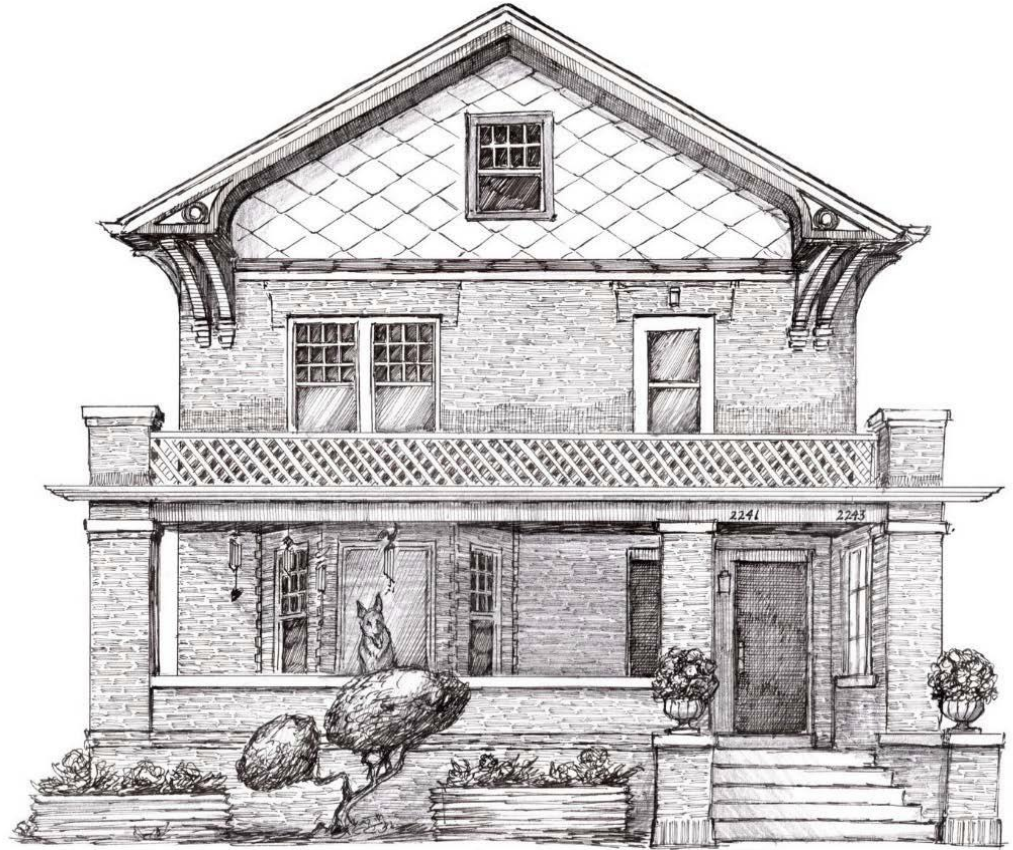
- A. It has a direct association with a significant historic event or with the historical development of the city, state, or nation;
- B. It has direct and substantial association with a recognized person or group of persons who had influence on society;**
- C. It embodies the distinctive visible characteristics of an architectural style or type;**
- D. It is a significant example of the work of a recognized architect or master builder;
- E. It contains elements of design, engineering, materials, craftsmanship, or artistic merit which represent a significant innovation or technical achievement;
- F. It represents an established and familiar feature of the neighborhood, community or contemporary city, due to its prominent location or physical characteristics;
- G. It promotes understanding and appreciation of the urban environment by means of distinctive physical characteristics or rarity;
- H. It represents an era of culture or heritage that allows an understanding of how the site was used by past generations;
- I. It is a physical attribute of a neighborhood, community, or the city that is a source of pride or cultural understanding;
- J. It is associated with social movements, institutions, or patterns of growth or change that contributed significantly to the culture of the neighborhood, community, city, state, or nation.**

B. It has direct and substantial association with a recognized person or group of persons who had influence on society;

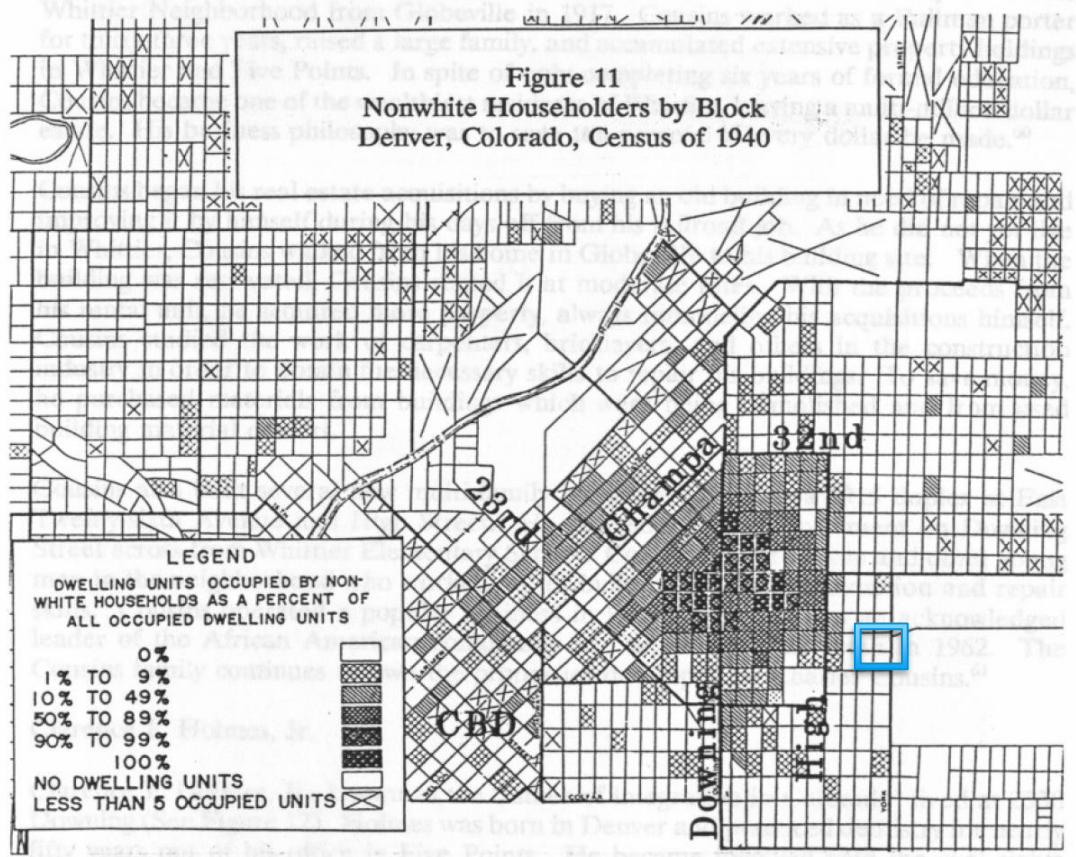
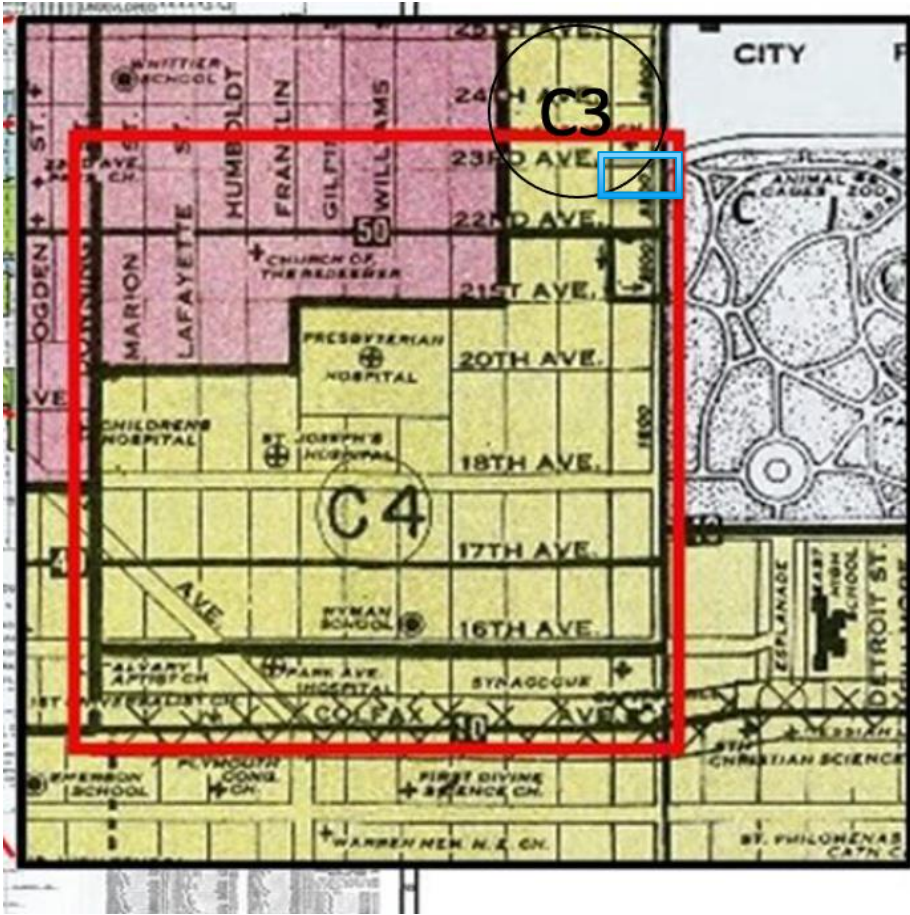


NAACP Legal Defense Team-Brown v Board of Education.  
Irving Andrews second from left in second row from the top.

C. Embodies the distinctive visible characteristics of an architectural style or type;

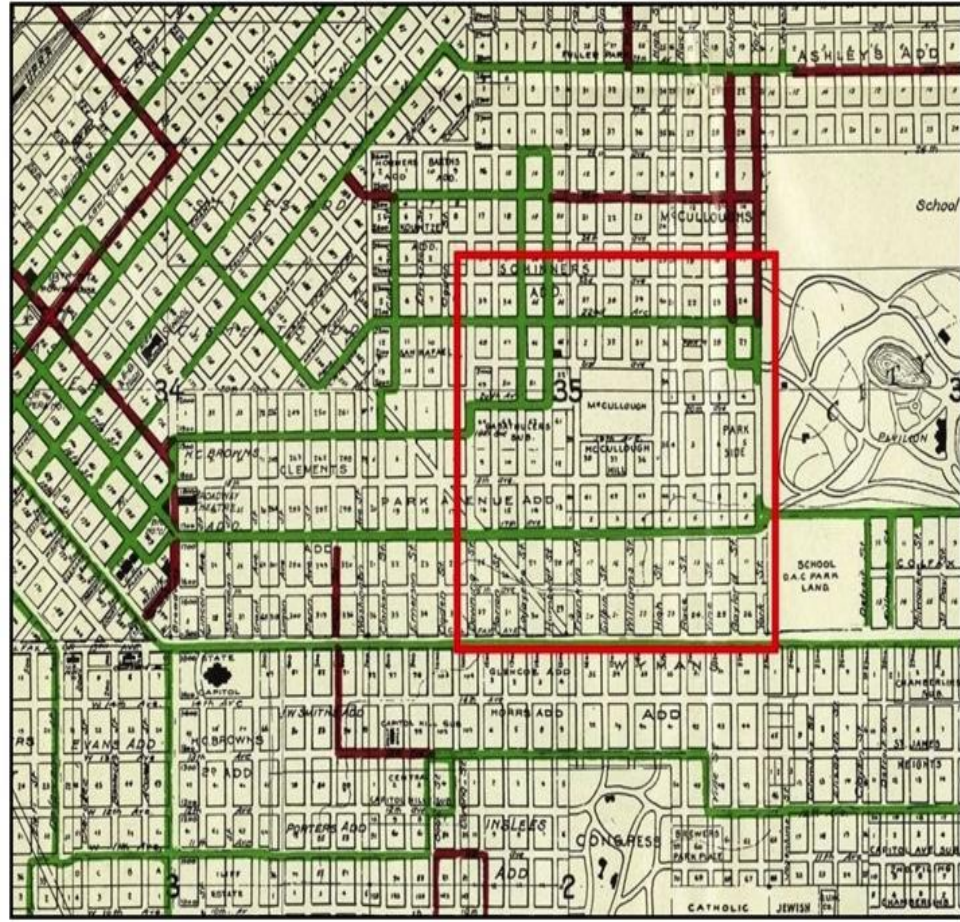


J. It is associated with social movements, institutions, or patterns of growth or change that contributed significantly to the culture of the neighborhood, community, city, state, or nation.



SOURCE: U.S. Bureau of the Census,

Historic Context



FOUR GROUPS VOICE OPINIONS

Mixed Reactions Greet Plan to Drop Gove

By MARY SCOPEL
Denver Post Special
The biggest surprise handed the Park Hill area of East Denver in recent weeks has been the proposed elimination by the Denver Board of Education of Gove Junior High School 1325 Colorado Blvd. in favor of a new junior high school at E. 32nd and Colorado Blvd.

questions from another and approval from still another. The Gove P.T.A. called a special meeting with less than one week's notice and had a turnout of about 200 parents and residents who quickly agreed on two resolutions and fired them off to the school board. They asked that the new optional area B, which is now optional to both Gove and Morey Junior High Schools remain so. Under the new proposal about 25 students in the area would all go to Morey.

The second proposal cited population figures which the P.T.A. said indicated the need for keeping a junior high school on the present Gove site. At another meeting, a group of about 75 parents from Barvett Elementary School, 2900 Jackson St., whose children also would be affected by the proposed new school, listened to Dr. Charles E. Armstrong, executive director of the office of business services, present the board's case for re-districting but had nothing good to say for the proposal.



schools. I don't school "etton" have ver to sersion a... ot re- orhood s are either ful en- dary s." he rately sim

JACKSON FULLER
Against optional areas.
number of ethnic and racial backgrounds. Our children will not get a maximum of democratic education at this site. "You already have the Gove site," Andrews said, "and it has been a school property for many years. Use it for another more adequate school and draw the lines to include us. The boundary lines wouldn't be any weirder than they are now."
Another parent said, "My children will be tenth graders before the impact of living in a mixed world is presented to them. By then, how will they

EDGAR BENTON
Dispersion is the answer.
school follow those of District 9.
Johnson replied that neither council districts nor the presence of minority groups was considered in delineating the boundaries.
Boundary lines, he stressed, were the result of compromise, and an attempt was made to prevent more optional areas. He said the ultimate aim of the board of education was to do away with optional school areas altogether.
Jackson Fuller at the Barvett School said, "If it were up to me we would have no



4 OF 12 HOMES IN THIS PARK HILL BLOCK SHOW "FOR SALE" SIGNS
Panic selling stopped, say PHAC members, noting that 124 sales signs of year ago have shrunk to 62

## Period of Significance

- 1914-1998

## Integrity

- Retains integrity – windows replaced

## Public Comment

- No public comment

# LPC Review - Unanimous Recommendation of Approval

- Over 30 years of age
- Application meets at least three criteria
  - **A. It has direct and substantial association with a recognized person or group of persons who had influence on society;**
  - **C. It embodies the distinctive visible characteristics of an architectural style or type;**
  - **J. It is associated with social movements, institutions, or patterns of growth or change that contributed significantly to the culture of the neighborhood, community, city, state, or nation.**
- Retains Integrity
- LPC considers the historic context

Based on the ordinance designation criteria and on the findings of the Landmark Preservation Commission (LPC) that the application meets the criteria for designation of a structure, CPD staff recommends forwarding this application to City Council for a public hearing.