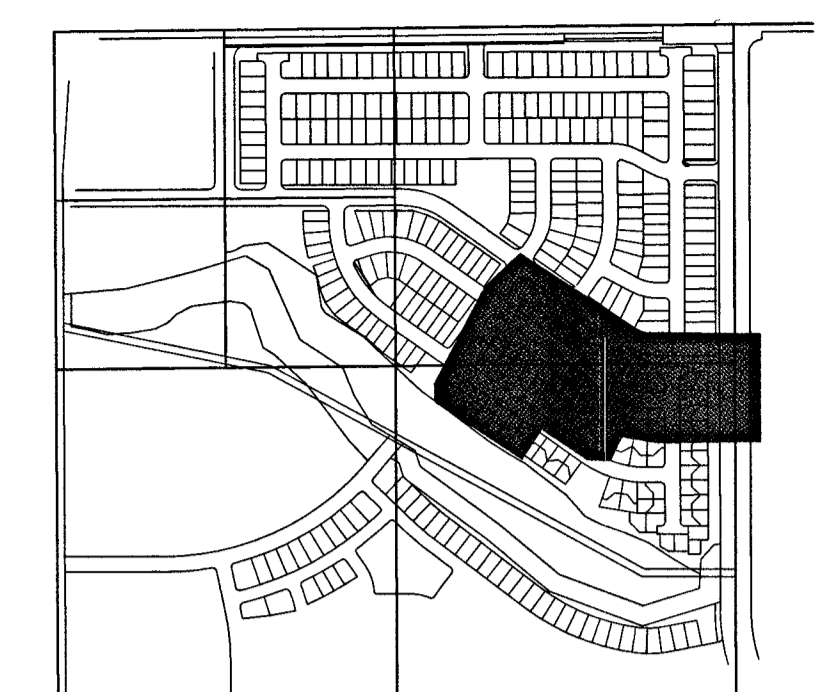


GREEN VALLEY RANCH FILING NO. 62

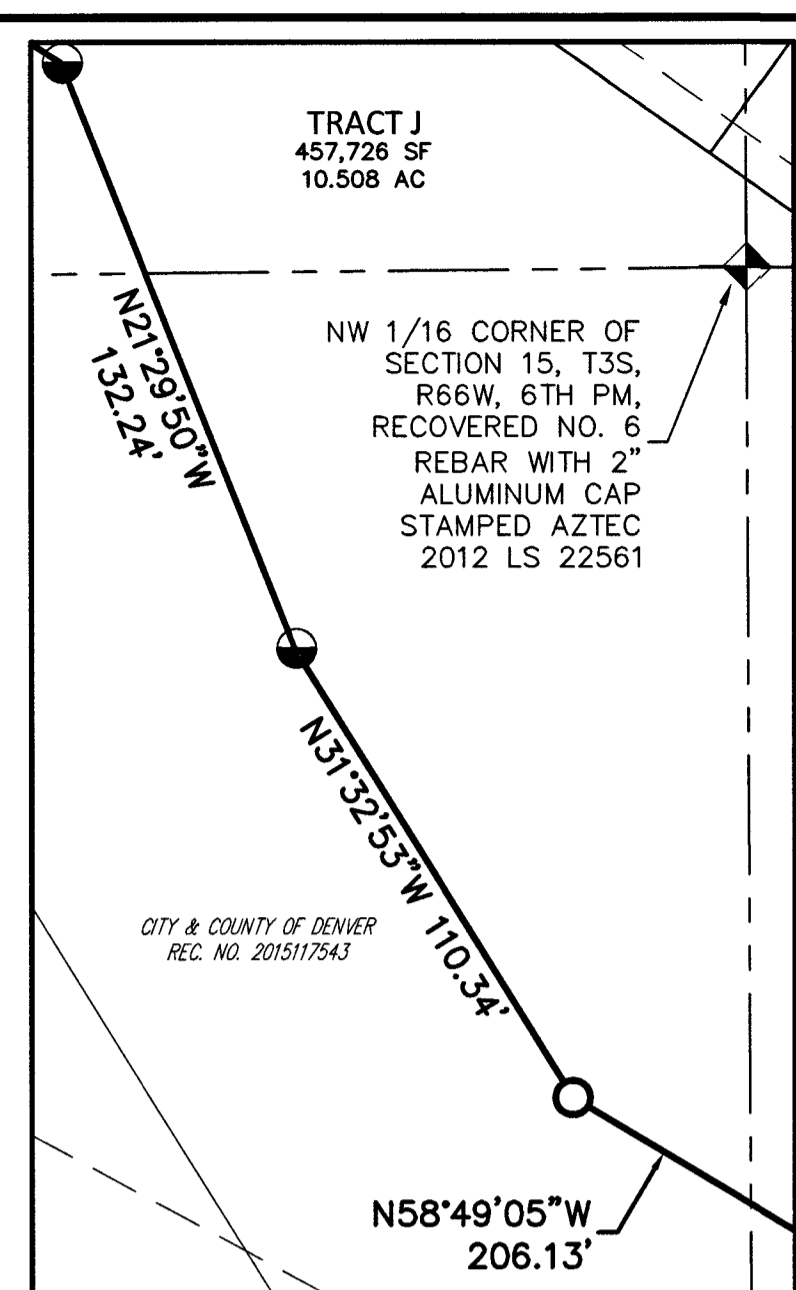
A RESUBDIVISION OF A PART OF LOT 1, MOFFITT TRACT AND A PART OF THE NORTHWEST QUARTER OF SECTION 15,
TOWNSHIP 3 SOUTH, RANGE 66 WEST OF THE SIXTH PRINCIPAL MERIDIAN,
CITY AND COUNTY OF DENVER, STATE OF COLORADO.
SHEET 7 OF 11



KEY MAP
NOT TO SCALE

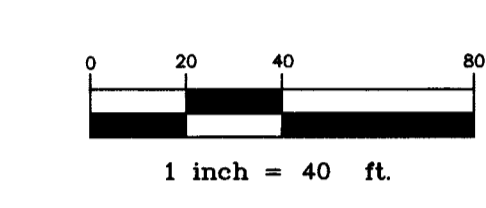


FOR AND ON BEHALF OF
AZTEC CONSULTANTS, INC.



(BOUNDARY
DETAIL)

NOTE:
SEE SHEET 9 FOR LINE
AND CURVE TABLE INFORMATION



UTILITY LEGEND

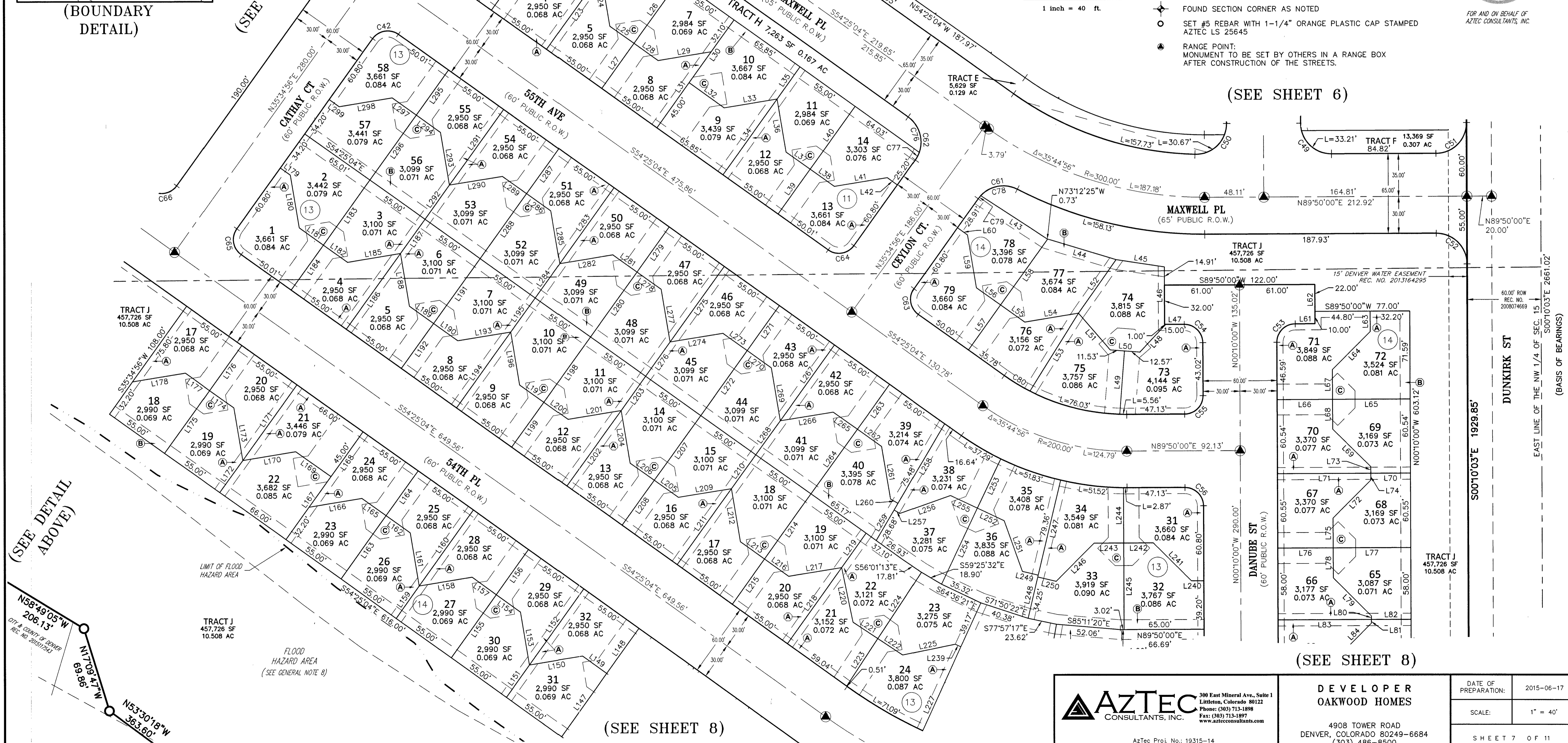
- (A) 5' UTILITY EASEMENT GRANTED BY THIS PLAT
- (B) 8' UTILITY EASEMENT GRANTED BY THIS PLAT
- (C) ACCESS AND UTILITY EASEMENT GRANTED BY THIS PLAT
- (D) 5' SIDEWALK EASEMENT GRANTED BY THIS PLAT

MONUMENT LEGEND

- ◆ FOUND SECTION CORNER AS NOTED
- SET #5 REBAR WITH 1-1/4" ORANGE PLASTIC CAP STAMPED AZTEC LS 25645
- RANGE POINT: MONUMENT TO BE SET BY OTHERS IN A RANGE BOX AFTER CONSTRUCTION OF THE STREETS.

(SEE SHEET 6)

(SEE SHEET 8)



(SEE DETAIL
ABOVE)

(SEE SHEET 8)

AZTEC
CONSULTANTS, INC.
300 East Mineral Ave., Suite 1
Littleton, Colorado 80122
Phone: (303) 713-1899
Fax: (303) 713-1897
www.aztecconsultants.com
AzTec Proj. No.: 19315-14

DEVELOPER
OAKWOOD HOMES
4908 TOWER ROAD
DENVER, COLORADO 80249-6684
(303) 486-8500

DATE OF PREPARATION:	2015-06-17
SCALE:	1" = 40'
SHEET 7 OF 11	