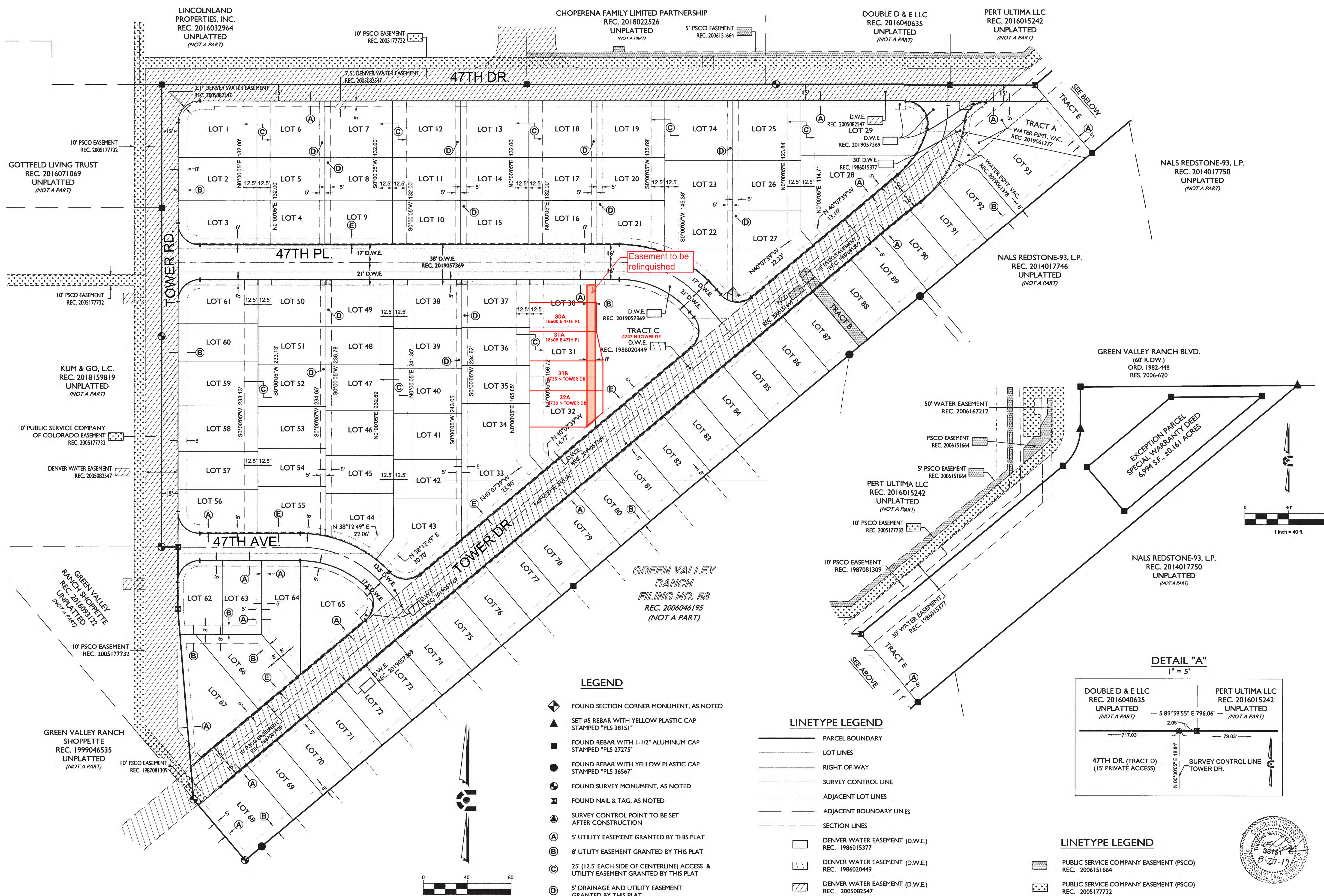


TOWER COMMONS SUBDIVISION FILING NO. 1

A PART OF THE NORTHWEST QUARTER OF SECTION 22, TOWNSHIP 3 SOUTH, RANGE 66 WEST OF THE SIXTH PRINCIPAL MERIDIAN, CITY AND COUNTY OF DENVER, STATE OF COLORADO



GREEN VALLEY RANCH FILING NO. 58
REC. 2006046195
(NOT A PART)

LEGEND

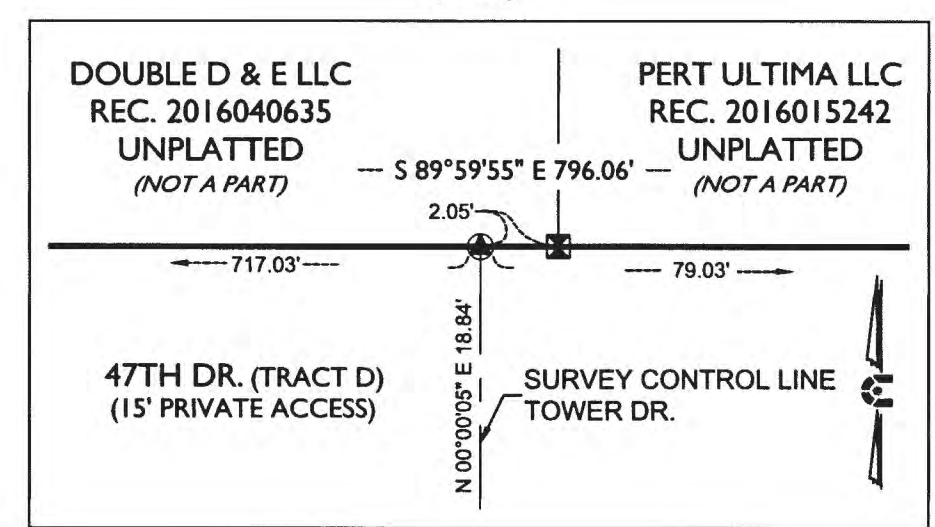
- ◆ FOUND SECTION CORNER MONUMENT, AS NOTED
- ▲ SET #5 REBAR WITH YELLOW PLASTIC CAP STAMPED "PLS 38151"
- FOUND REBAR WITH 1-1/2" ALUMINUM CAP STAMPED "PLS 27275"
- FOUND REBAR WITH YELLOW PLASTIC CAP STAMPED "PLS 36567"
- ⊙ FOUND SURVEY MONUMENT, AS NOTED
- ⊠ FOUND NAIL & TAG, AS NOTED
- SURVEY CONTROL POINT TO BE SET AFTER CONSTRUCTION
- Ⓐ 5' UTILITY EASEMENT GRANTED BY THIS PLAT
- Ⓑ 8' UTILITY EASEMENT GRANTED BY THIS PLAT
- Ⓒ 25' (12.5' EACH SIDE OF CENTERLINE) ACCESS & UTILITY EASEMENT GRANTED BY THIS PLAT
- Ⓓ 5' DRAINAGE AND UTILITY EASEMENT GRANTED BY THIS PLAT
- Ⓔ 6' UTILITY EASEMENT GRANTED BY THIS PLAT

LINETYPE LEGEND

- PARCEL BOUNDARY
- LOT LINES
- RIGHT-OF-WAY
- SURVEY CONTROL LINE
- - - ADJACENT LOT LINES
- - - ADJACENT BOUNDARY LINES
- - - SECTION LINES
- ▭ DENVER WATER EASEMENT (D.W.E.) REC. 1986015377
- ▨ DENVER WATER EASEMENT (D.W.E.) REC. 1986020449
- ▩ DENVER WATER EASEMENT (D.W.E.) REC. 2005082547
- ▧ DENVER WATER EASEMENT (D.W.E.) REC. 2019057369
- ▦ PUBLIC SERVICE COMPANY EASEMENT (PSCO) REC. 2006151664
- ▤ PUBLIC SERVICE COMPANY EASEMENT (PSCO) REC. 2005177732
- ▥ 5' DRAINAGE AND UTILITY EASEMENT GRANTED BY THIS PLAT

DETAIL "A"

1" = 5'



LINETYPE LEGEND

- ▭ PUBLIC SERVICE COMPANY EASEMENT (PSCO) REC. 2006151664
- ▤ PUBLIC SERVICE COMPANY EASEMENT (PSCO) REC. 2005177732
- ▥ 5' DRAINAGE AND UTILITY EASEMENT GRANTED BY THIS PLAT



EASEMENTS

NO.	DATE	BY	REVISIONS
1	05/20/19	JCA	CCD COMMENTS
2	07/15/2019	JCA	CCD COMMENTS
3	08/15/2019	JCA	CCD COMMENTS

TOWER COMMONS SUBDIVISION FILING NO 1
SEC. 22, T3S, R66W, 6TH P.M.
CITY AND COUNTY OF DENVER, COLORADO

RELEASE: 4/9/19
DESIGNED: KDS
CAD: KDS
QA/QC: TMG
JOB NO. 18-006
SHEET 4 of 4

CIVIL ENGINEERING
DEVELOPMENT CONSULTING
LAND SURVEYING
NATURAL RESOURCES
303.703.4444
1950 W. Littleton Blvd., Ste. 109
Littleton, CO 80120

