



# 2018-19 WORKFORCE CONTRACTS

Business, Arts, Education and Aeronautical Services Committee

Tony Anderson, OED Denver Workforce Services

June 13, 2018

# CONTRACTS

★ **18-0630** \$3,505,000 to ResCare Workforce Services (Arbor E&T) to provide services to adults, including WIOA enrollees

★ **18-0629** \$1,560,000 to Denver Public Schools to provide services to WIOA In-School and Out-of-School Youth

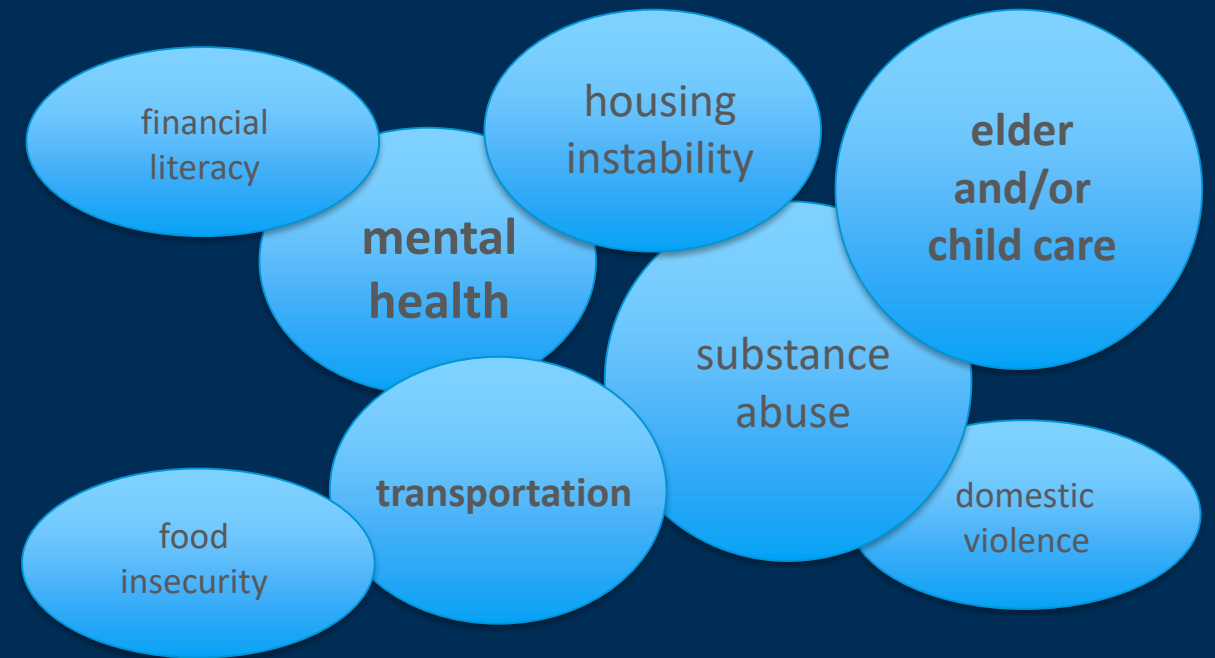
\$700,000 to ResCare Workforce Services (Arbor E&T) to provide services to TANF recipients

Additional \$100,000 to Denver Public Schools for 2018 Summer Youth Employment Program (Total \$600,000)

# WHO WE SERVE

## THE PRIORITY POPULATIONS

- Recipients of public assistance
- Low income individuals and families
- Basic skills deficient
- Individuals with disabilities
- Ex-offenders
- Long-term unemployed

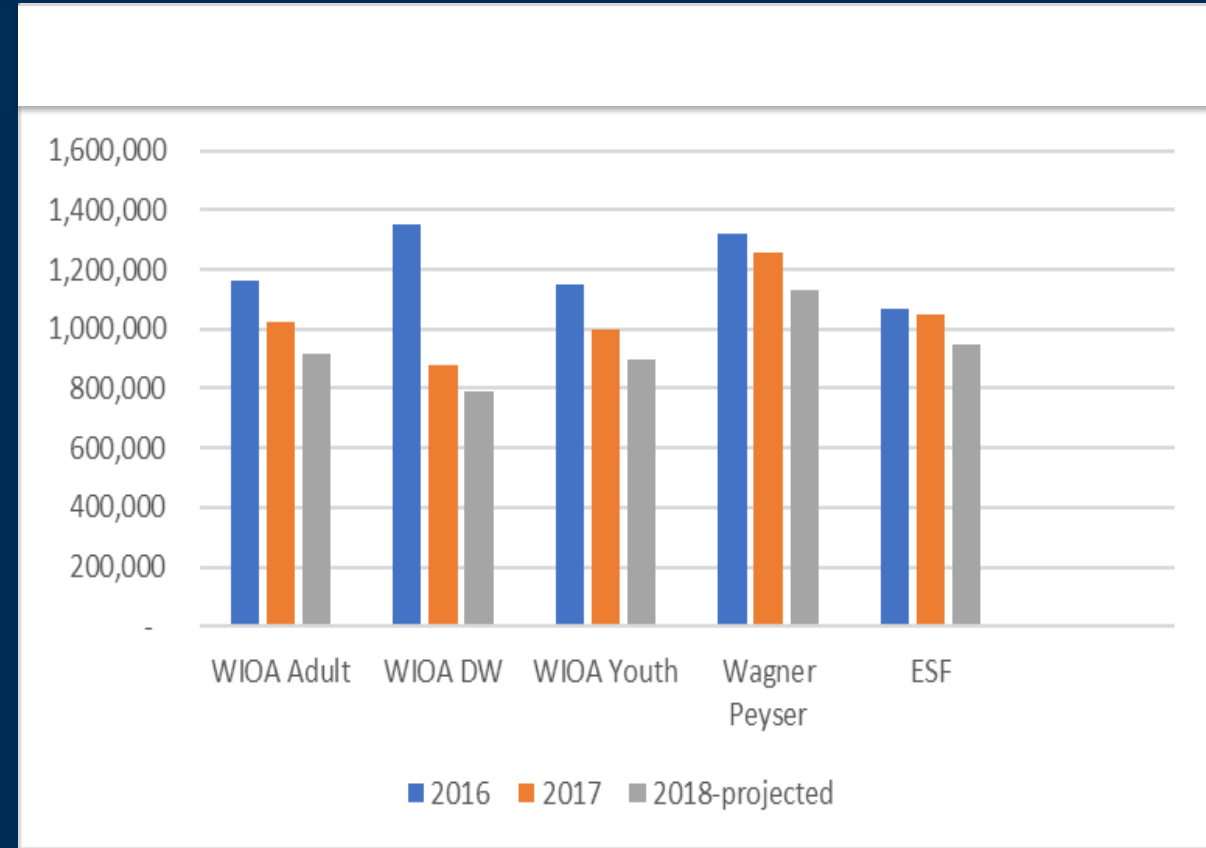


## BY THE NUMBERS (PY16-17 and 17-18)

- 80% of program-enrolled job seekers
  - 898 individuals reporting receipt of SNAP and/or TANF and/or experiencing homelessness
    - 216 individuals experiencing homelessness
- 161 individuals reporting receipt of both SNAP and TANF

# TREND IN FEDERAL FUNDS

	2016	2017	2018 (projected)
<b>WIOA Adult</b>	\$1,164,923	\$1,021,261	\$919,135
<b>WIOA Displaced</b>	\$1,350,215	\$881,059	\$792,953
<b>WIOA Youth</b>	\$1,151,666	\$996,697	\$897,027
<b>Wagner-Peyser</b>	\$1,322,121	\$1,256,389	\$1,130,750
<b>Employment Support Fund</b>	\$1,065,917	\$1,050,036	\$945,032



# DENVER WORKFORCE SERVICES – TOTAL METRICS

## Total jobseekers served

PY17 - 22,717  
PY16 - 27,647

## Staff assisted services

PY17 - 6,449 jobseekers  
(32,980 services)  
PY16 - 8,944 jobseekers  
(35,433 services)

## Total program-enrolled jobseekers

PY17 - 1,917  
PY16 - 2,012

## Entered employment rate

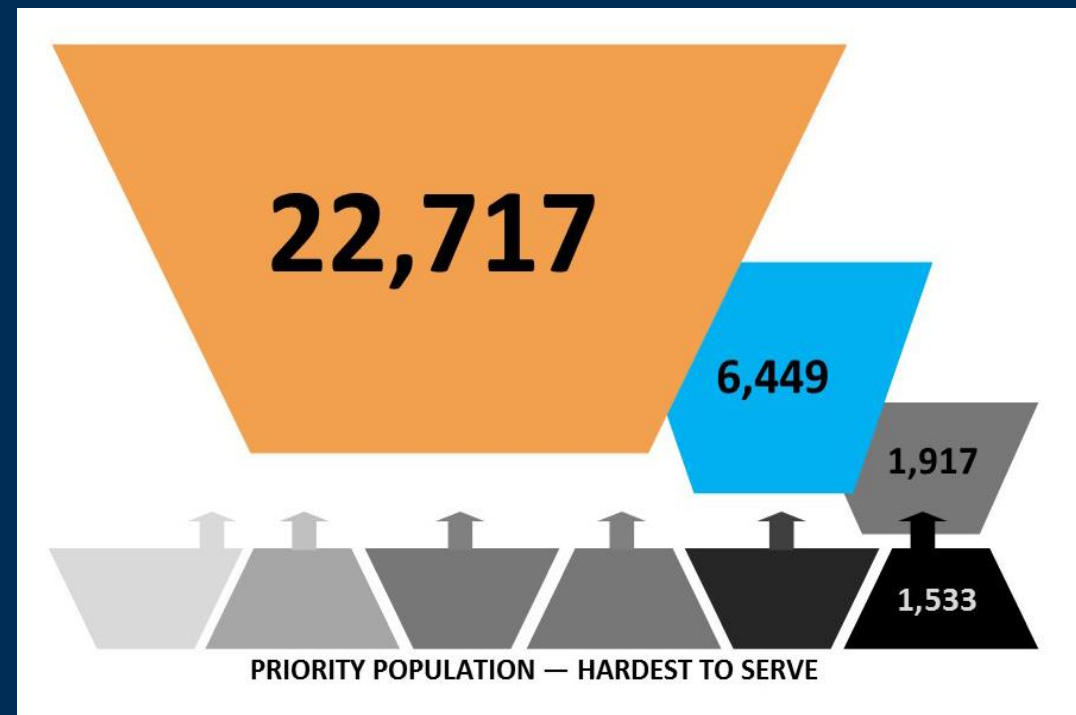
PY17 - 61.20%  
PY16 - 59.33%

## Employment retention

PY17 - 79.14%  
PY16 - 78.09%

## Average wage

PY17 - \$17.69/hour  
PY16 - \$15.54/hour



*PY17 numbers include data through 5/31/18*

# METRICS: WIOA Adult Program

## Total Enrollments

PY17 - 528

PY16 - 721

## Received training

PY17 - 260

PY16 - 230

## Employment in 2Q after exit

PY17 - 68% (Goal is 75%\*)

PY16 - 74% (70%)

## Employment in 4Q after exit

PY17 - 67% (70%)

PY16 - 68% (65%)

## Median Quarterly Earnings

PY17 - \$4,221 (\$7,388)

PY16 - \$6,176 (\$7,000)

## Credential Rate

PY17 - 60% (52%)

PY16 - 47% (40%)

*Federal guidelines set an aspirational goal, with our performance expected to reach 80% of goal*

# METRICS: WIOA Dislocated Worker Program

## Total Enrollments

PY17 - 216

PY16 - 263

## Received training

PY17 - 51

PY16 - 64

## Employment in 2<sup>nd</sup> Qtr After Exit

PY17 - 75% (76%)

PY16 - 74% (75%)

## Employment in 4<sup>th</sup> Qtr After Exit

PY17 - 74% (72%)

PY16 - 73% (68%)

## Median Earnings

PY17 - \$8,209 (\$8,440)

PY16 - \$7,495 (\$8,000)

## Credential Rate

PY17 - 63% (50%)

PY16 - 35% (40%)

# METRICS: WIOA-Enrolled Youth

## Total enrollments

PY17 - 409

PY16 - 606

## Employment in 2Q after exit

PY17 - 67% (65%)

PY16 - 66% (65%)

## Received training

PY17 - 142

PY16 - 137

## Employment in 4Q after exit

PY17 - 67% (57%)

PY16 - 65% (56%)

## Credential Rate

PY17 - 38% (57%)

PY16 - 43% (40%)



# METRICS – TANF PY17

Total Referrals - 300

Percentage entering employment or training - 48%

Received Training - 37

Entered Employment - 106

*PY18 contract will continue to focus on employment placement of work-ready customers, with a focus on strengths-based, technical skills, and career assessments*

## CONTINUUM OF JOBSEEKER SERVICES



*Access, Collaboration, Referrals, Best Practices*

# Denver Workforce Integration Network

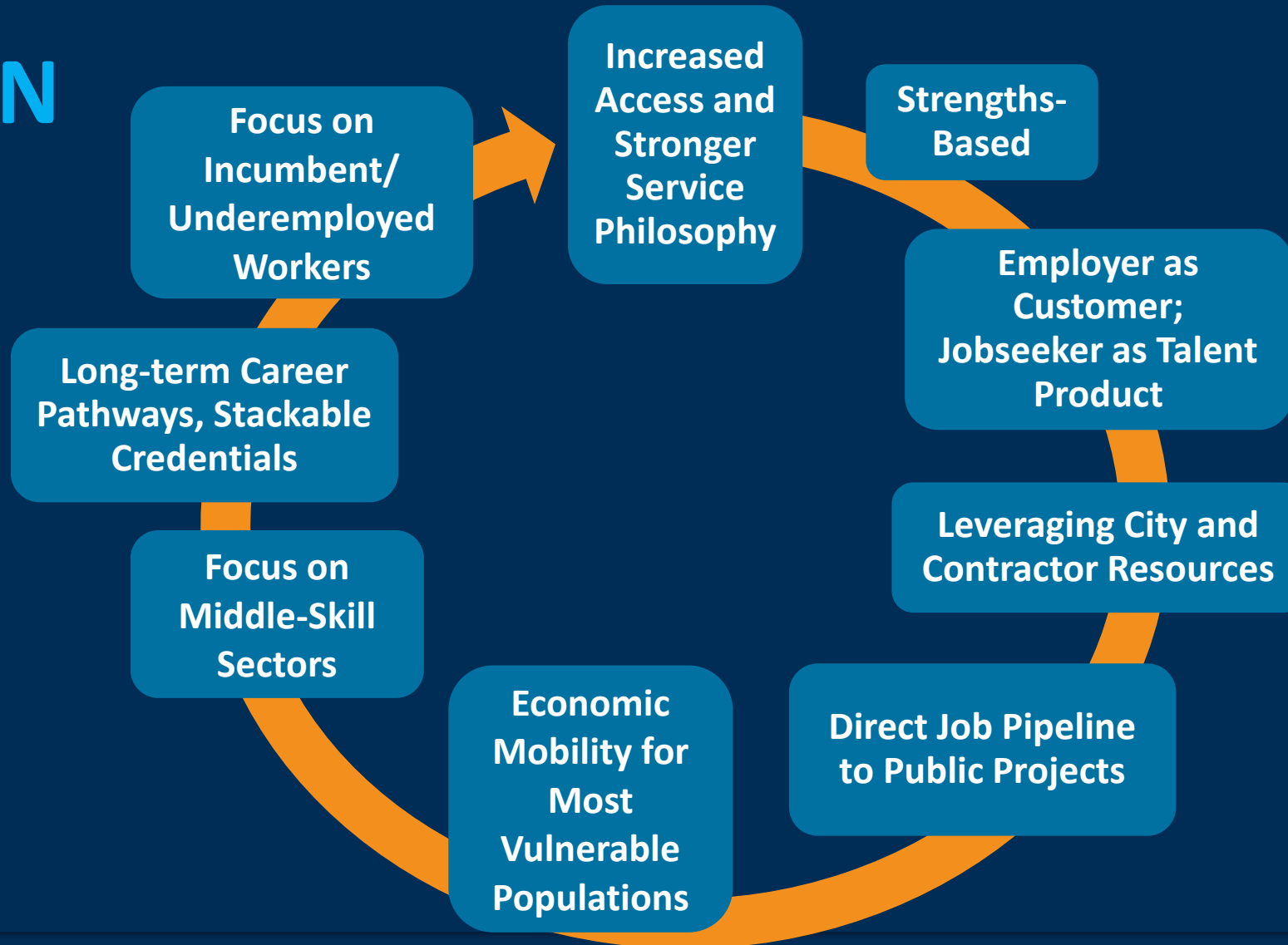
**Convener:** ResCare

**Partners:**

Asian Pacific Development Center  
Community College of Denver  
Division of Vocational Rehabilitation  
Denver Human Services  
Denver Housing Authority  
Denver Indian Center

Emily Griffith Technical College  
Focus Points Family Resource Center  
OED/Denver Workforce  
Senior Community Service Employment Program  
CO Veterans Services  
Youth Build

# VISION



*We are entering our third year of outsourced contractors*

# OTHER KEY INITIATIVES, OTHER FUNDING STREAMS

- **WORKNOW**
- **Technology Employment in Colorado Partnership (TEC-P)**
- **Re-Imagine Retail (Walmart Foundation Grant)**
- **Disability Employment Initiative**
- **Early Childhood Workforce Innovation Grant**



## ON THE HORIZON . . .

- **Construction Initiative**  
Increased access to city projects for Denver residents
- **Economic Mobility Resource Center Model - GES**  
Expanded physical access to Denver Workforce Services staff
- **Workforce Development Board**  
Focused on youth, work-based learning, funding and sustainability
- **Enhanced Sector Partnerships**  
Informed, pro-active, employer-driven workforce system

# QUESTIONS / DISCUSSION

