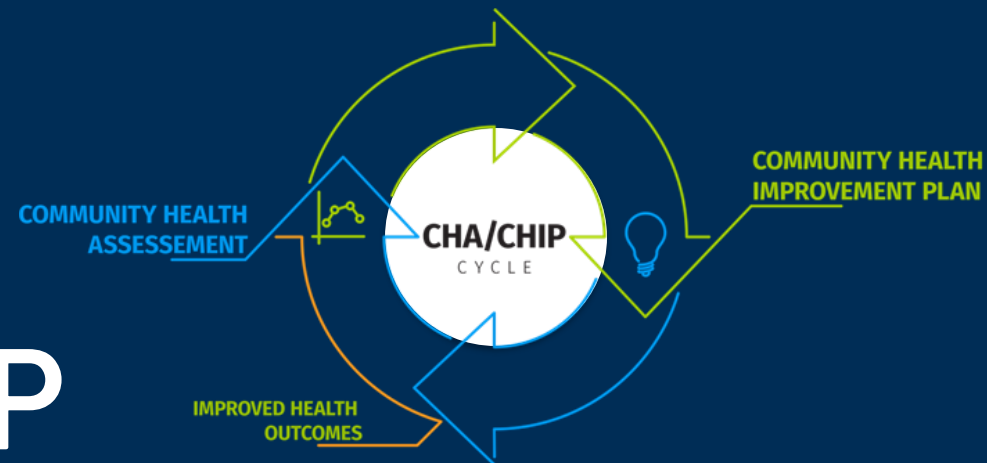


DDPHE CHA & CHIP

Safety, Housing, Education &
Homelessness Committee

March 26, 2025



Empowering Denver's communities to live better, longer

Image: Lincoln-Lancaster County Health Dept., 2024.



CONNECT WITH US 311 | DENVERGOV.ORG | DENVER 8 TV

Community Health Assessment (CHA)

- Identifies factors that affect population health
- Assesses availability of resources to help
- Systematic, comprehensive data collection and analysis

Source: Modified from Centers for Disease Control & Prevention, n.d.

Community Health Improvement Plan (CHIP)

- Long-term, systematic effort by local public health authority (LPHA) & partners
- Identifies and implements strategies towards measurable health improvement
- Completed every five years by LPHAs in Colorado

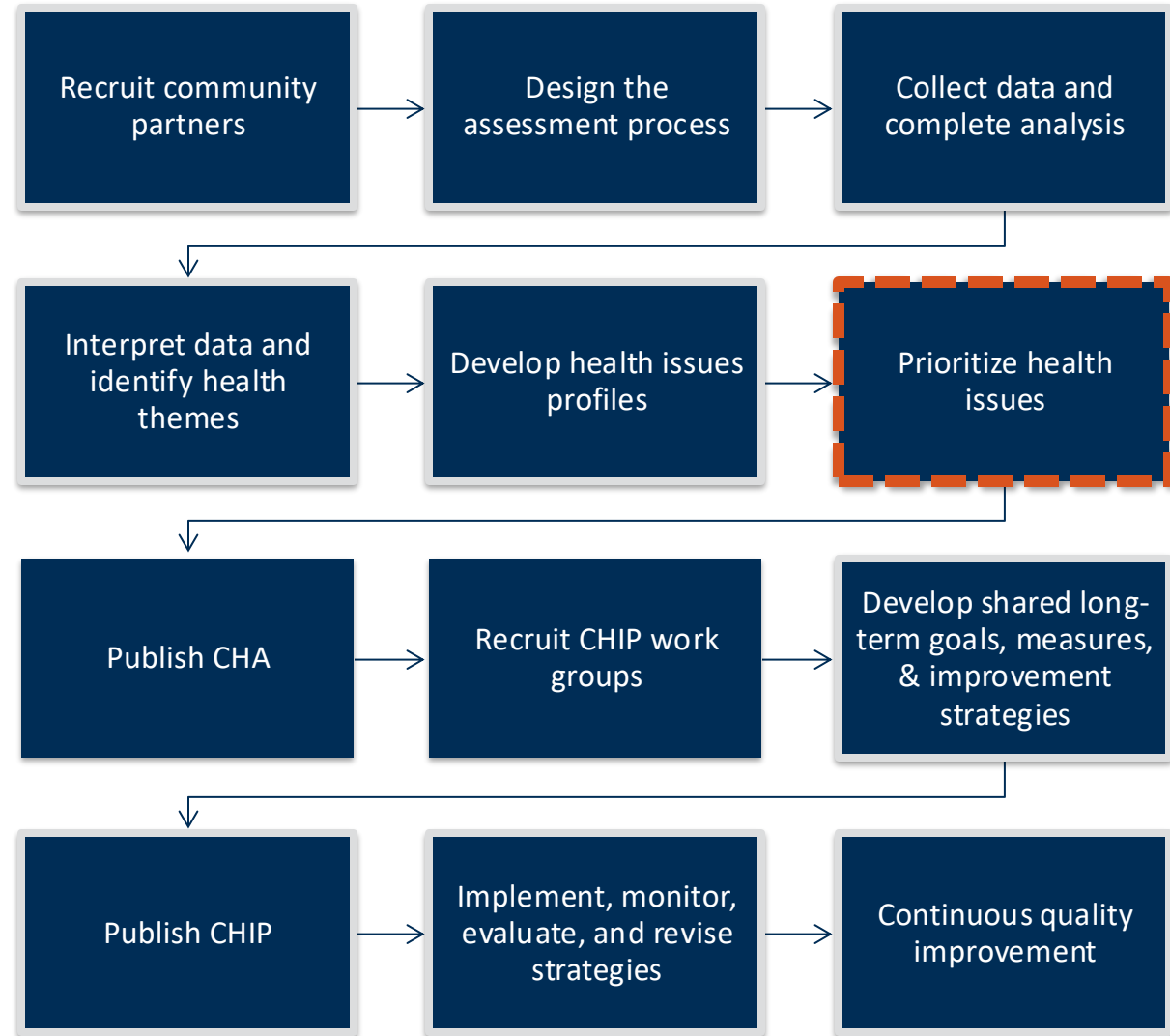
Source: Modified from Centers for Disease Control & Prevention, n.d.

Community Health Improvement Cycle

Research-based community health improvement framework

Emphasizes community engagement and data-driven assessments

Focus on improving inequities, cross-sector collaboration



Source: Modified from National Association of City & County Health Organizations, 2023.

Social Determinants of Health

- The conditions in which people are born, grow, work, live, and age, and the wider set of forces and systems shaping the conditions of daily life.
- Non-medical factors that influence health outcomes

Source: World Health Organization, n.d.

Social Determinants of Health



Social Determinants of Health
Copyright-free

 Healthy People 2030

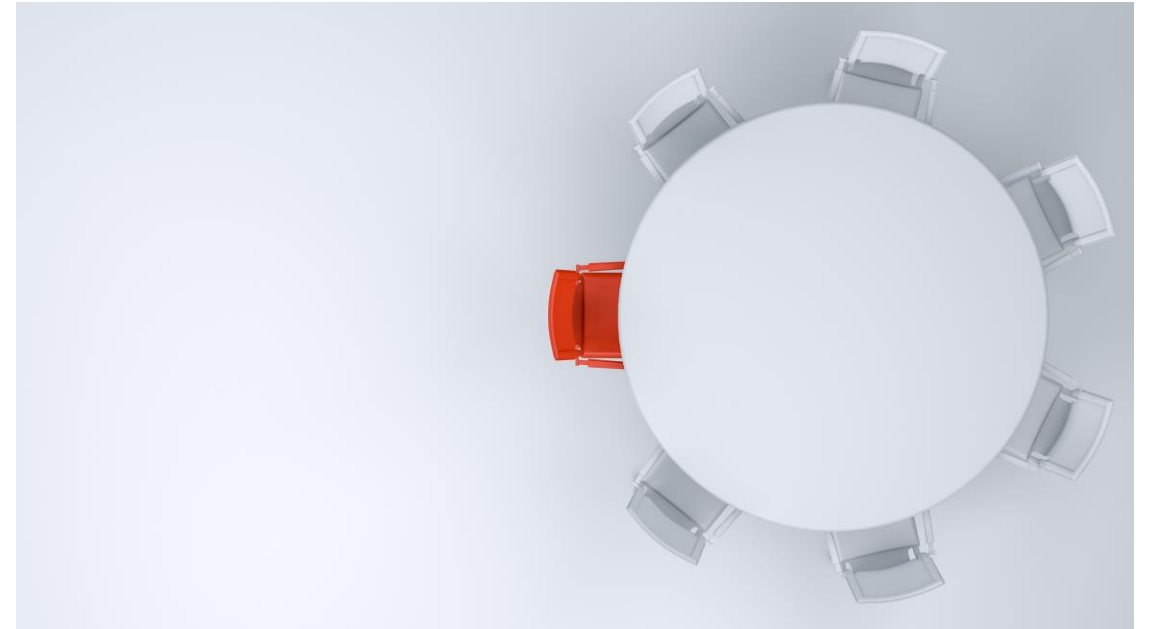
Source: Health People 2030, n.d.

Community Engagement



Community Engagement

- Steering Committee
- Assessment Design Team
- Community Advisory Group
- Data collection



Data Collection & Interpretation



Data Collection

Community Involvement

- 2,154 Thrive in the Mile High survey responses
- 12 focus groups across different populations
- 2 town halls

Quantitative Assessment

- ~100 data indicators across 15+ datasets
- Temporal, demographic, and geographic trends

Current DDPHE Expertise

- Public health assessment bibliography
- Prioritization involvement

- Analyzed all sources of CHA information to identify key patterns, trends
- Assessment Design Team (ADT) identified ten issue statements, outlining health problems, severity, and impact

CHA Preliminary Findings

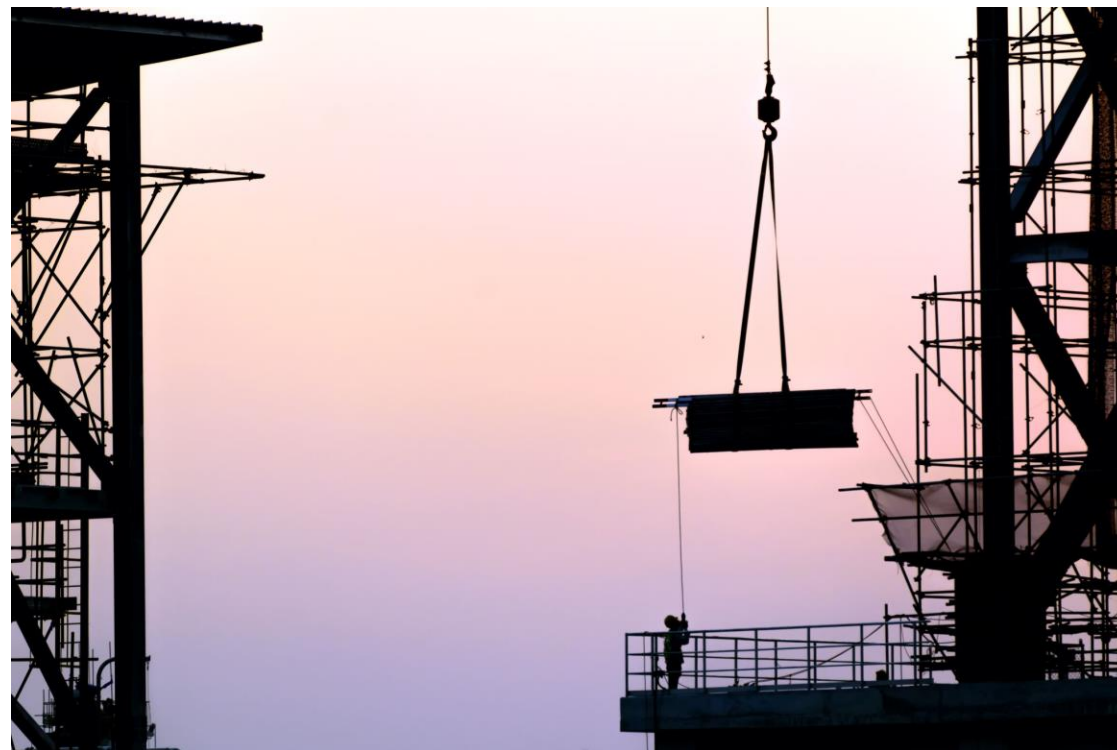
- Access to health care
- Belonging among transgender - identifying high school students
- Firearm-related homicides among men of color
- Food insecurity
- Income
- Overdoses among people experiencing homelessness
- Racism
- School drop-out rates among select vulnerable populations
- Safe and affordable housing
- Transportation access

Next Steps



Next Steps

- Publish CHA
- Recruit working groups
- Develop shared long-term goals, measures, & strategies
- Publish CHIP
- Implement, monitor, evaluate, and revise



Questions?

Paige Andrews, MS
Senior Population Health
Epidemiologist
Paige.Andrews@DenverGov.org

Nathan Keffer, MPA
Community Assessment &
Improvement Planning Senior
Analyst
Nathan.Keffer@DenverGov.org

