

Denver Parks & Recreation

Proposed Park Designations

14th Round – Spring 2023

Land Use, Transportation & Infrastructure Committee (LUTI) –

May 23, 2023

Park System History

- Park System had its origin in 1858 with the cities of Auraria, Denver City and Highland at the confluence of the South Platte River and Cherry Creek
- First park was Curtis Park in 1868
- First Park Board was created in 1893
- The Park Board directed the management and development of the park system until about 1904
- Under Mayor Speer, a charter amendment in 1904 was adopted that created the Department of “Improvements and Parks”
- In 1910 the Mountain Park System was established
- In 1956 the Department of Parks and Recreation was created.
- Parcels that were acquired, developed or treated as a park at this time (1956) became designated under this charter amendment
- Subsequent park designations are accomplished through the City Council ordinance process

Designation Considerations

- Supports a master plan (City Park)
- Has historical, cultural, ecological, or educational significance (Civic Center, Cheesman)
- Preservation of key visual corridors or scenic vistas (Cranmer)
- Park facilities have been or are planned to be constructed
- Area infrastructure / utilities are not in a state of flux that may impact or change the park (Hampden Heights Park)
- There are no title / ownership issues that cast a cloud on the City's title or right to possession of the park (Kennedy Complex, DEN Open Space)
- No pending or anticipated plans for making/expanding non-park uses within the park.

Park Designation Status

- **Beginning of 2013**
Approximately 68% of the urban park system was already designated a parkland
- **1st Round - April 2013**
Approximately 180 acres became designated (72% of urban parks are designated)
- **2nd Round – January 2014**
Approximately 275 acres became designated (78% of urban parks are designated)
- **3rd Round – April 2014**
Approximately 164 acres became designated (82% of urban parks are designated)
- **4th and 5th Rounds – November 2014**
Approximately 42 acres became designated (84% of urban parks are designated)

Park Designation Status

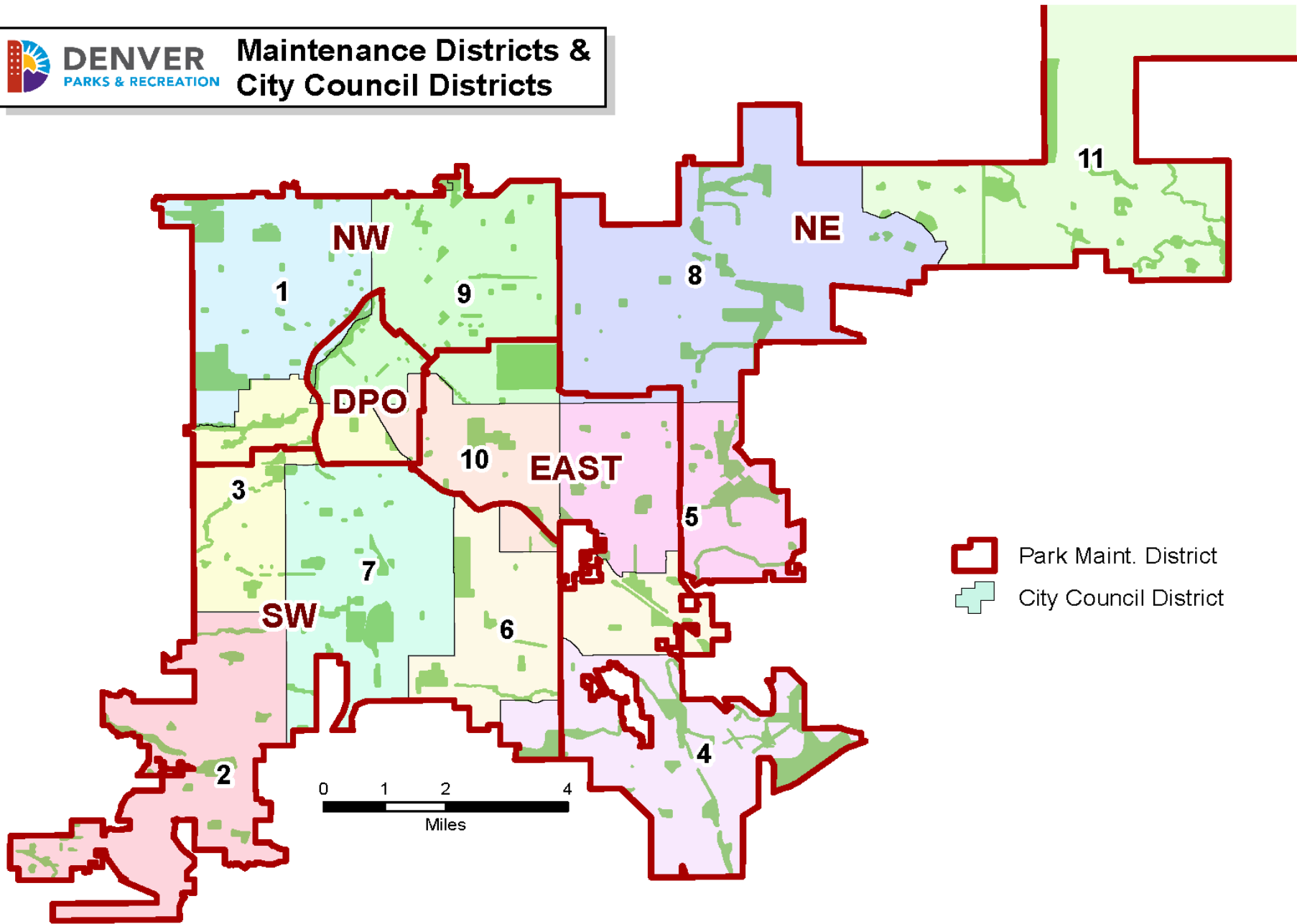
- 6th Round – Fall 2015
Approximately 88 acres became designated (85% of urban parks are designated)
- 7th Round – Spring 2016
Approximately 5.9 acres became designated (78% of urban parks are designated)
- Red Rocks Park Addition – Summer 2016
Approximately 98 acres added to Red Rocks became designated
- 8th Round – Fall 2016
Approximately 180 acres became designated (81% of urban parks are designated)
- 9th Round – Spring 2017
Approximately 65 acres became designated (82% of urban parks are designated)

Park Designation Status

- 10th Round – Fall 2017
Approximately 3.6 acres became designated (82% of urban parks are designated)
- 11th Round – Winter 2018
Approximately 75 acres became designated (84% of urban parks are designated)
- 12th Round – Fall 2020
Approximately 99 acres became designated (82% of urban parks are designated)
- 13th Round – Spring 2022
Approximately 36 acres became designated parkland (81% of urban parks are designated)
- 14th Round – Spring 2023
Approximately 121.8 acres will become designated (76% of urban parks designated)



DENVER Maintenance Districts & City Council Districts

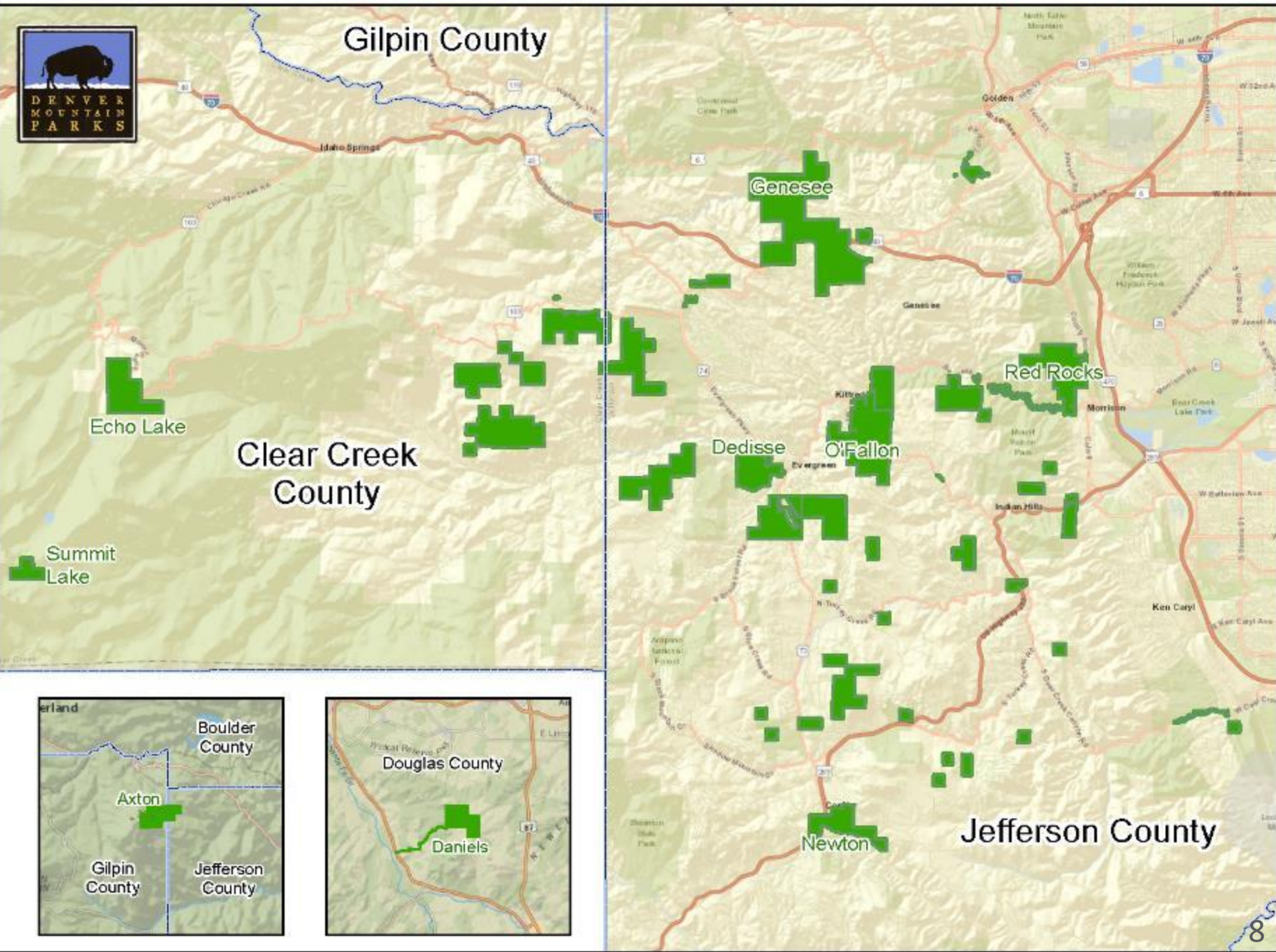




Gilpin County

Clear Creek
County

Jefferson County



Echo Lake

Summit
Lake

Genesee

Red Rocks

Dedisse

O'Fallon

Newton



Boulder
County

Axton

Gilpin
County

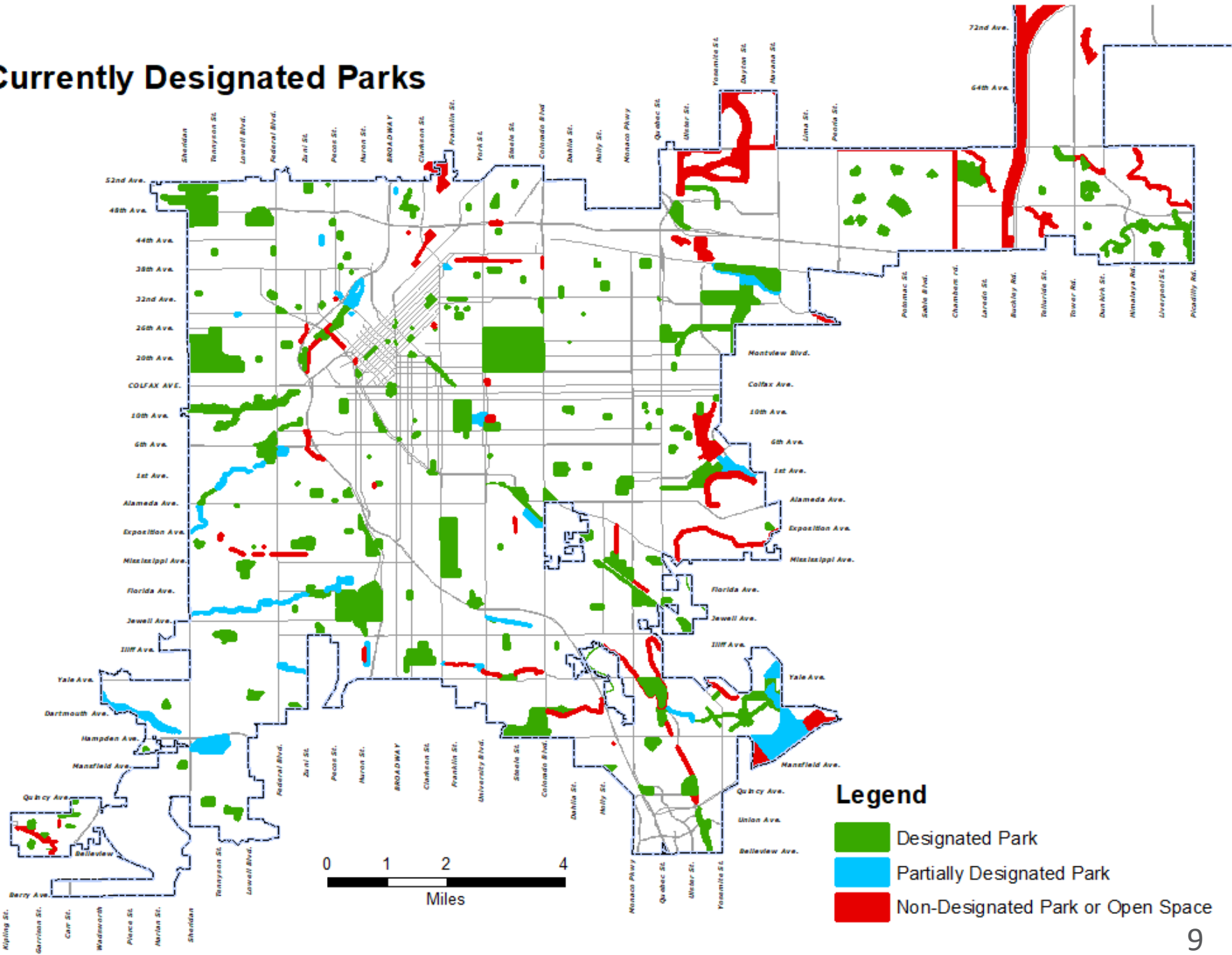
Jefferson
County



Douglas County

Daniels

Currently Designated Parks



Park Designations

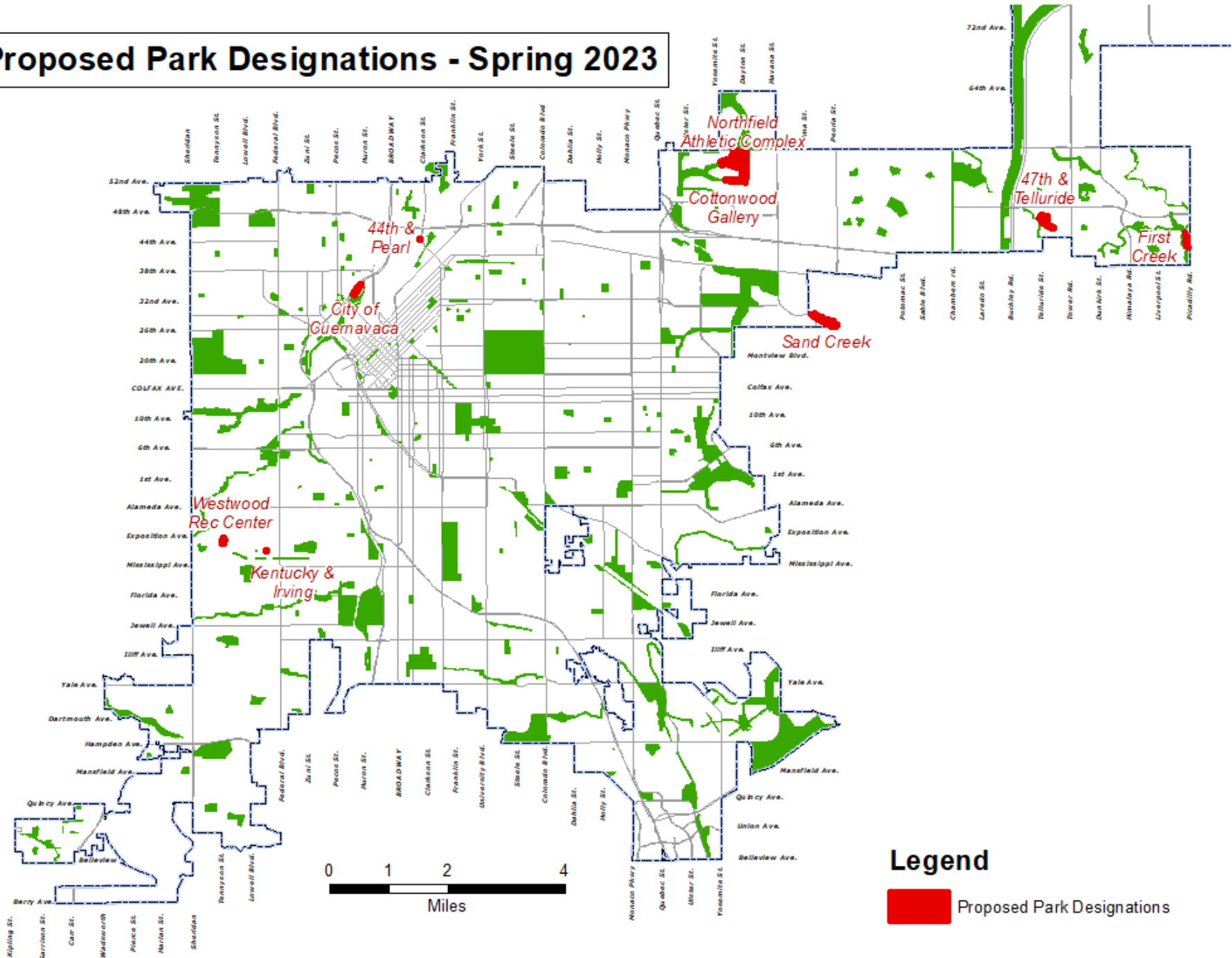
Proposed Designations - Round 14 - Spring 2023

LOCATION NAME	PARK TYPE	GIS ACRES	MAINT DIST	COUNCIL DIST
City of Cuernavaca Park (Portion)	Community	4.6	DPO	1
Kentucky & Irving	Undeveloped	0.3	SW	3
Westwood Recreation Center	Rec Center	2.8	SW	3
Cottonwood Gallery (Addition)	Undeveloped	7.0	NE	8
Northfield Athletic Complex	Athletic Complex	69.1	NE	8
Sand Creek Open Space (8A)	Open Space	20.9	NE	8
47th & Telluride	Undeveloped	13.2	NE	11
First Creek Open Space (Addition)	Open Space	3.4	NE	11
44th & Pearl	Undeveloped	0.5	NW	9

Total Acres:	121.8
---------------------	--------------

- Designation of parkland from 1956 to 2012 – 56 year time span: approximately 600 acres
- Designation of parkland from 2013 to 2023 – 10 year time span: approximately 1,433.3 acres, more than twice as much as the prior 56 years
- Park and Open Space acreage added to the Denver Parks system from 2013 to 2023: approximately 1,907 acres
- Designated parkland cannot be sold or disposed of without approval of voters

Proposed Park Designations - Spring 2023



Legend

Proposed Park Designations



City of Cuernavaca Park

Aerial Imagery - 2022

1 inch = 150 feet at 11x17

100
Map Scale In Feet





Unnamed Kentucky & Irving Park

Aerial Imagery - 2022

1 inch = 50 feet at 11x17
100
Map Scale in Feet





Sand Creek Truck Open Space

Aerial Imagery - 2022

1 inch = 100 feet at 11x17

100
Map Scale In Feet





Cottonwood Gallery (Addition)

Aerial Imagery - 2022

1 inch = 150 feet at 11x17
 100
 Map Scale In Feet





Northfield Athletic Complex
Aerial Imagery - 2022

1 inch = 300 feet at 11x17
100
Map Scale In Feet





Sand Creek Trunk Open Space

Aerial Imagery - 2022

1 inch = 200 feet at 11x17
 100
 Map Scale In Feet





Unnamed 47th & Telluride Park

Aerial Imagery - 2022

1 inch = 150 feet at 11x17

100
Map Scale In Feet





First Creek Open Space (Addition)

Aerial Imagery - 2022

1 inch = 150 feet at 11x17

100
Map Scale In Feet





Unnamed 44th & Pearl Park
Aerial Imagery - 2022

1 inch = 50 feet at 11x17
100
Map Scale In Feet



Request for Approval of Park Designations

- CB 23-0629 – City of Cuernavaca Park (portion), Council District 1 - 4.8 acres
- CB 23-0630 – Cottonwood Gallery (addition), Council District 8 – 7.0 acres
- CB 23-0631 – First Creek Open Space (addition), Council District 11 – 3.4 acres
- CB 23-0632 – Northfield Athletic Complex, Council District 8 – 69.1 acres
- CB 22-0633 – Sand Creek Open Space, Council District 9 – 20.9 acres
- CB 22-0634 – W. Kentucky & S. Irving Park, Council District 3 – 0.30 acres
- CB 22-0635 – 44th & Pearl Park, Council District 9 – 0.5 acres
- CB 22-0636 – 47th & Telluride Park, Council District 11 – 13.2 acres
- CB 22-0637 – Westwood Recreation Center - Council District 3 – 2.8 acres

Questions / Comments

