

Monday, April 14, 2025

Dept. of Transportation & Infrastructure

2025 Workplan Presentation

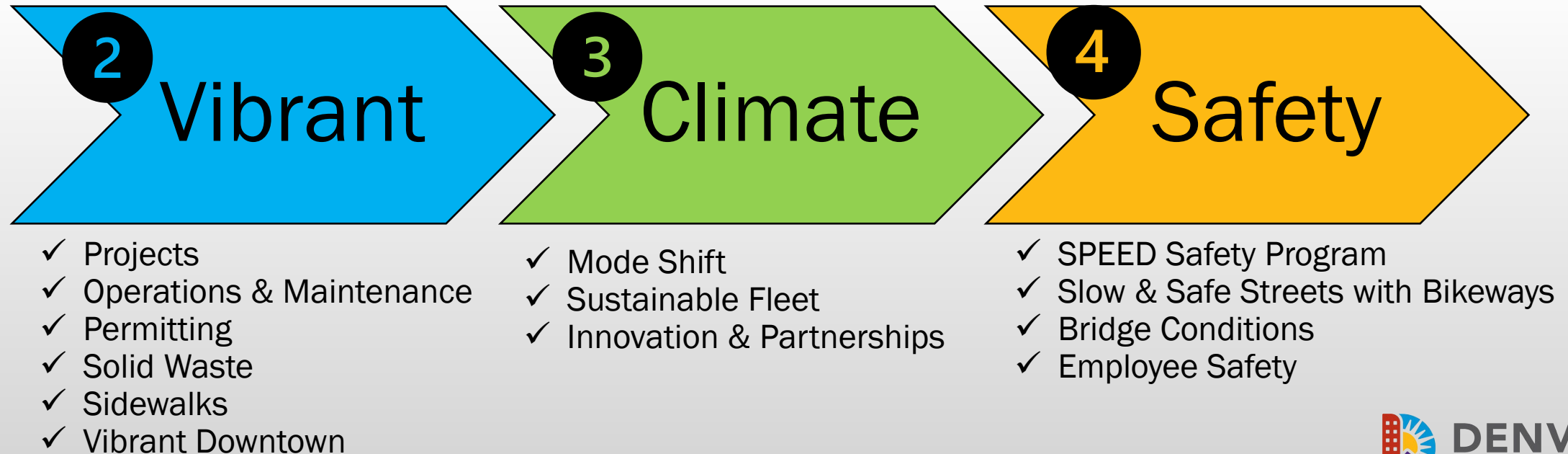


2025 Work Plan ROADmap

2

1 DOTI Overview

- ✓ 2025 Transportation Program
- ✓ 2025 Wastewater Program
- ✓ Project Map



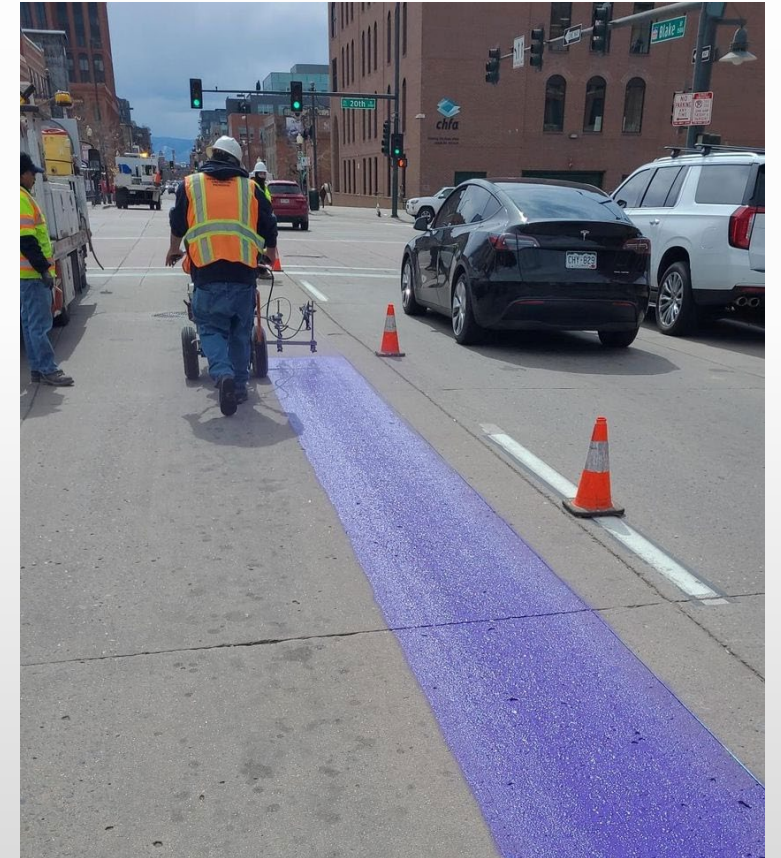
DEPARTMENT OVERVIEW

Vision: To be the Ideal Department of Transportation and Infrastructure in the country.

Mission: Denver's Department of Transportation and Infrastructure, through its employees, enhances the quality of life in Denver by safely and efficiently delivering effective, high quality, sustainable and equitable public infrastructure and services.

Strategic Focus Areas:

- Invest in our People
- Operate with Discipline
- Use Data to Drive Decisions
- Deliver Results
- Embed and Measure Equity



DOTI MISSION

DOTI is a modern agency focused on increasing mobility and safety while reducing congestion and fighting climate change.

DOTI FUNCTIONS

DOTI plans, designs, and builds the City's infrastructure. DOTI also operates, maintains, and regulates infrastructure elements within the public right of way. Infrastructure is grouped into two core functions — utilities and mobility. Utilities deliver our City's water and waste, as well as Denver's green infrastructure and services. Mobility delivers transportation infrastructure, services, and initiatives for all travelers, which includes pedestrians, bicyclists, transit riders, commercial vehicles, and drivers. Together, we are responsible for most things transportation related within the public right of way — or all the public space between private property lines.

DOTI has the ability to connect and leverage the City's transport, water, waste, and environmental systems to build a better Denver. This State of the System document focuses on transportation functions. DOTI is organized to effectively plan, design, build, deliver, operate, maintain, regulate, and enforce transportation services. DOTI does not maintain and operate all transportation services and infrastructure in Denver. Section 3.5 Quality provides a description of the transportation services DOTI does not provide, or provides in partnership with other agencies.

PLANNING OUR SYSTEM AND DELIVERING PROJECTS



Plan

We engage residents and organizations to develop strategic plans for all the ways people move, including citywide, area, and corridor mobility plans. Core responsibilities include transportation safety, innovation, micromobility, walking, bicycling, transit, and freight. We responsibly manage investments to best leverage capital funds and grant opportunities.



Design

We coordinate with Denver's neighborhoods to provide project development, engineering, safety, and environmental services to advance projects identified in planning efforts and through the city's 311 resident service.



Build

We manage the construction of capital projects including bridges, water systems, street reconstructions, sidewalks, bikeways, and transit projects.



Deliver

We provide support services to the Plan, Design and Build divisions to guide program development, facilitate project implementation, and evaluate success in reaching city goals.

OPERATING AND MAINTAINING OUR SYSTEM



Operate

We manage the operation of transportation system assets that help manage travel flow, including street markings, signs, traffic signals, and fiber optic connections.




Maintain

We conduct the upkeep and improvements to paved streets and alleys, clear snow, sweep and clean streets and bike lanes, and maintain curbs and gutters.



Regulate

We review and permit capital projects and development to ensure transportation, water, waste, environmental elements of the public right of way are coordinated and consistent with standards.



Enforce

We ensure compliance with standards and guidelines for parking, disabled accessibility, sidewalks, privately-built infrastructure, and other right-of-way codes.

FIGURE 1.5: DOTI Infrastructure Elements Within the Public Right of Way

DENVERGOV.ORG

DOTI AT A GLANCE



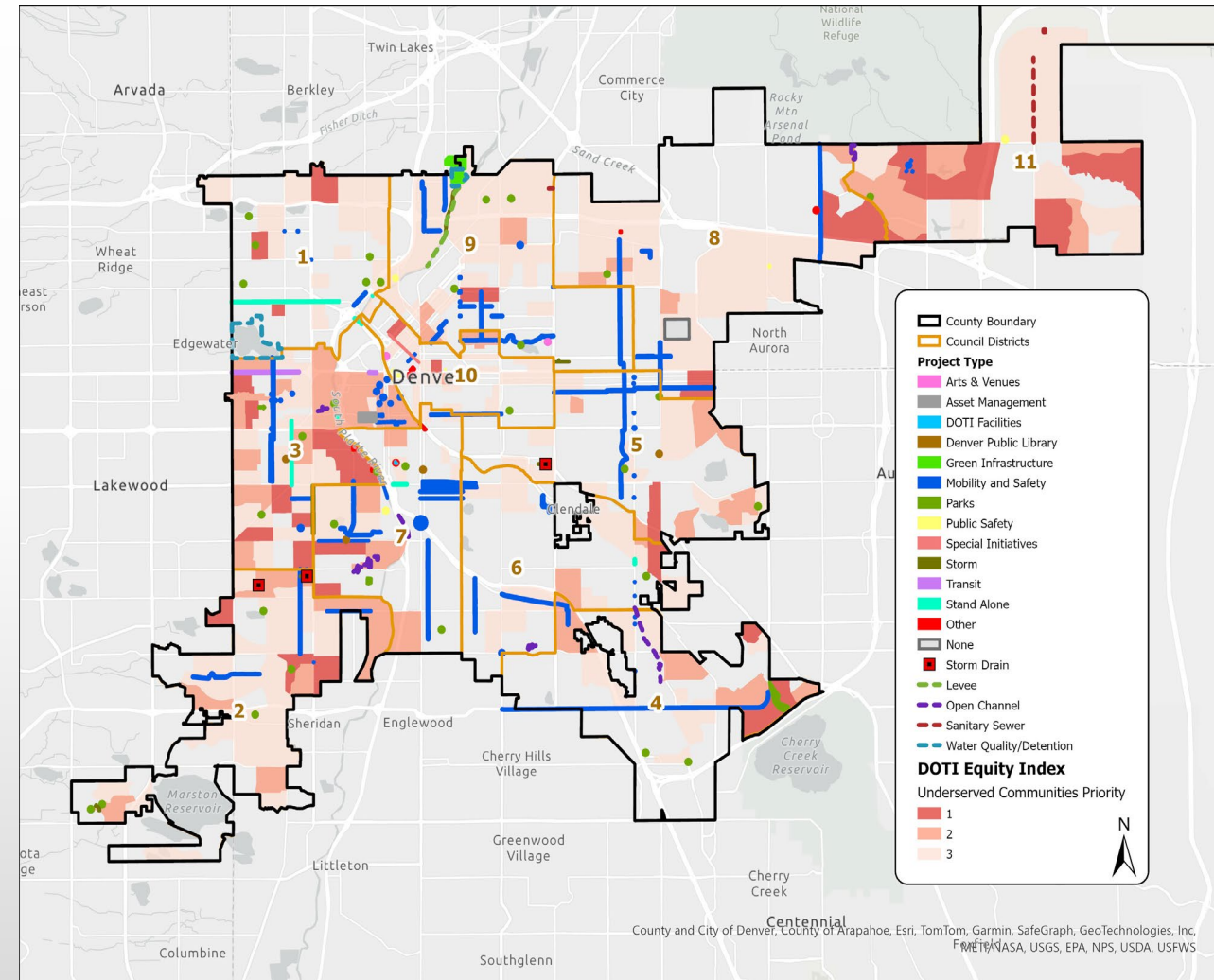
DENVER

TRANSPORTATION & INFRASTRUCTURE

EQUITY STRATEGY & MAP

DOTI's continuing commitment to equitable investment:

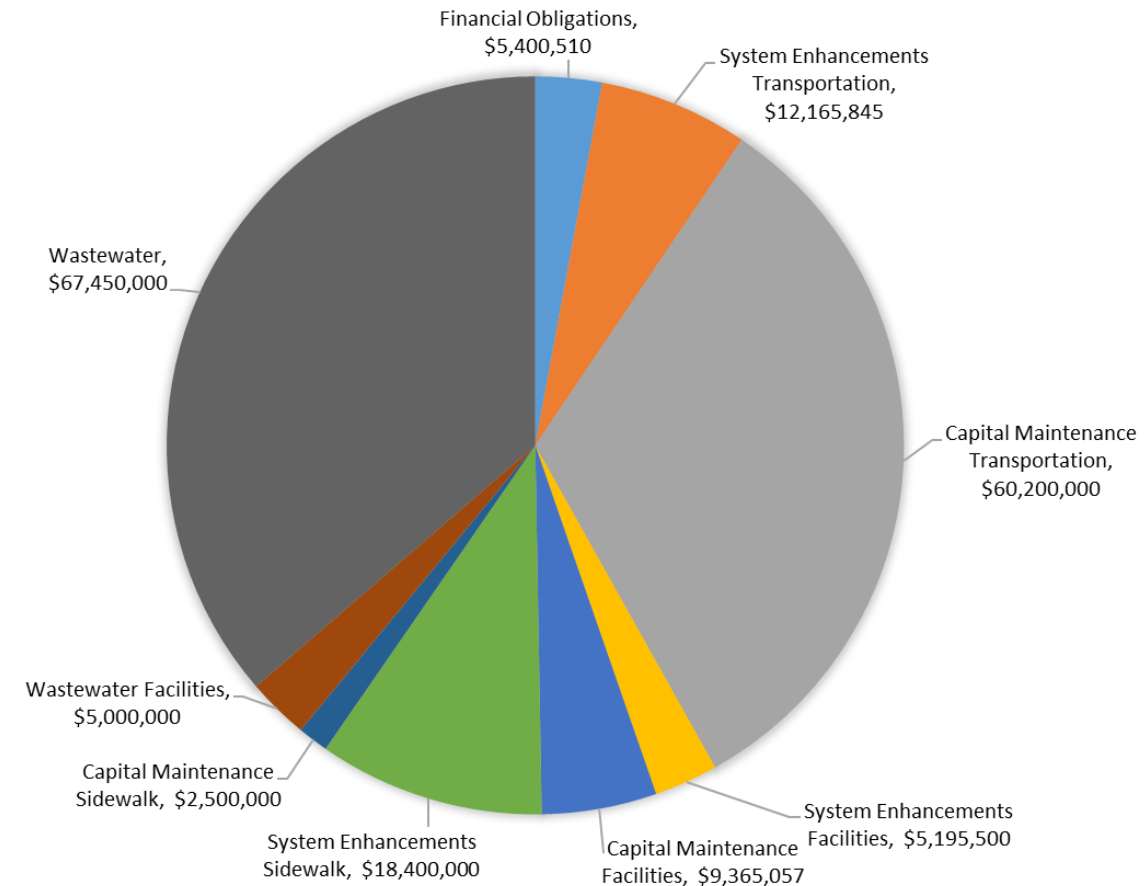
- Ensuring investments focus on areas of the City with the greatest need
- Maximizing utilization of disadvantaged (SBE/MBE/WBE) suppliers and contractors
- Ensuring development opportunities are extended to all levels of the organization with a focus on areas with the greatest need



2025 CAPITAL PROGRAM SUMMARY

DOTI's 2025 budget of **\$185.7M** makes targeted investments in facilities and safety, along with enhancements and maintenance of multimodal transportation and infrastructure assets.

- Total investment in **Transportation and Mobility** capital is **\$93.3M**
 - includes \$20.9M in funding from new sidewalk enterprise fund.
- Total investment in **Facilities** is **\$19.6M**
 - all for maintenance or safety enhancements of existing buildings.
- Total investment in **Environmental** is **\$67.5M**
 - includes \$27M for South Platte River and Tributaries.



TRANSPORTATION & MOBILITY CAPITAL INVESTMENTS

2025 HIGHLIGHTS

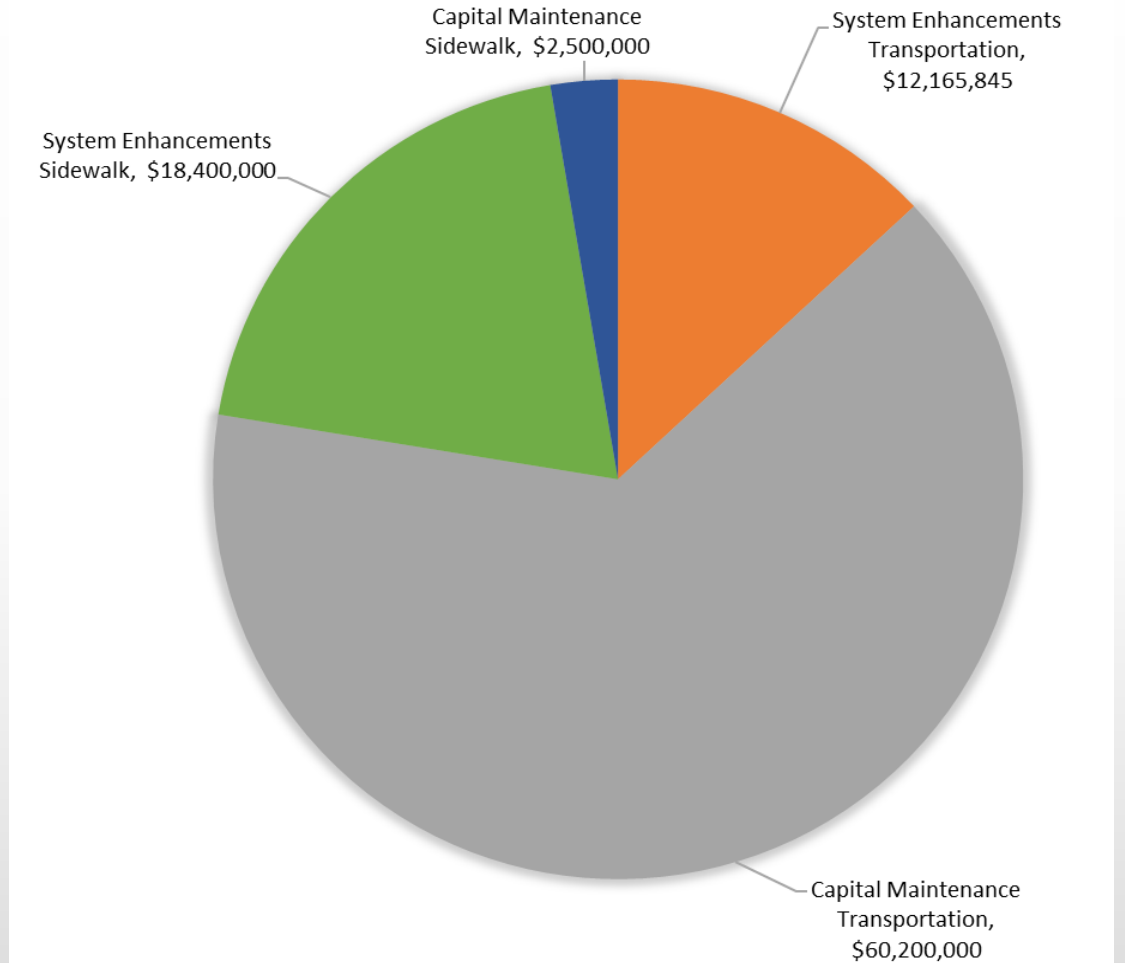
7

Capital Maintenance Projects

- Bridge Maintenance and Emergency Repairs
- Traffic Signal Infrastructure Maintenance
- Street Rotomill and Overlay Program
- ROW Concrete Maintenance
- Sidewalk Spot Repair

System Enhancement Projects

- Safe Routes to Schools
- Traffic Calming & Neighborhood Traffic Management Plans (NTMP)
- Downtown Safety Revolution grant project
- Completing major multimodal projects
 - Iowa Underpass, Safer Main Streets Evans & Mississippi, Harvard Gulch/University traffic signal, etc.



WASTEWATER CAPITAL INVESTMENTS

2025 HIGHLIGHTS

Storm Drainage Pipe Projects

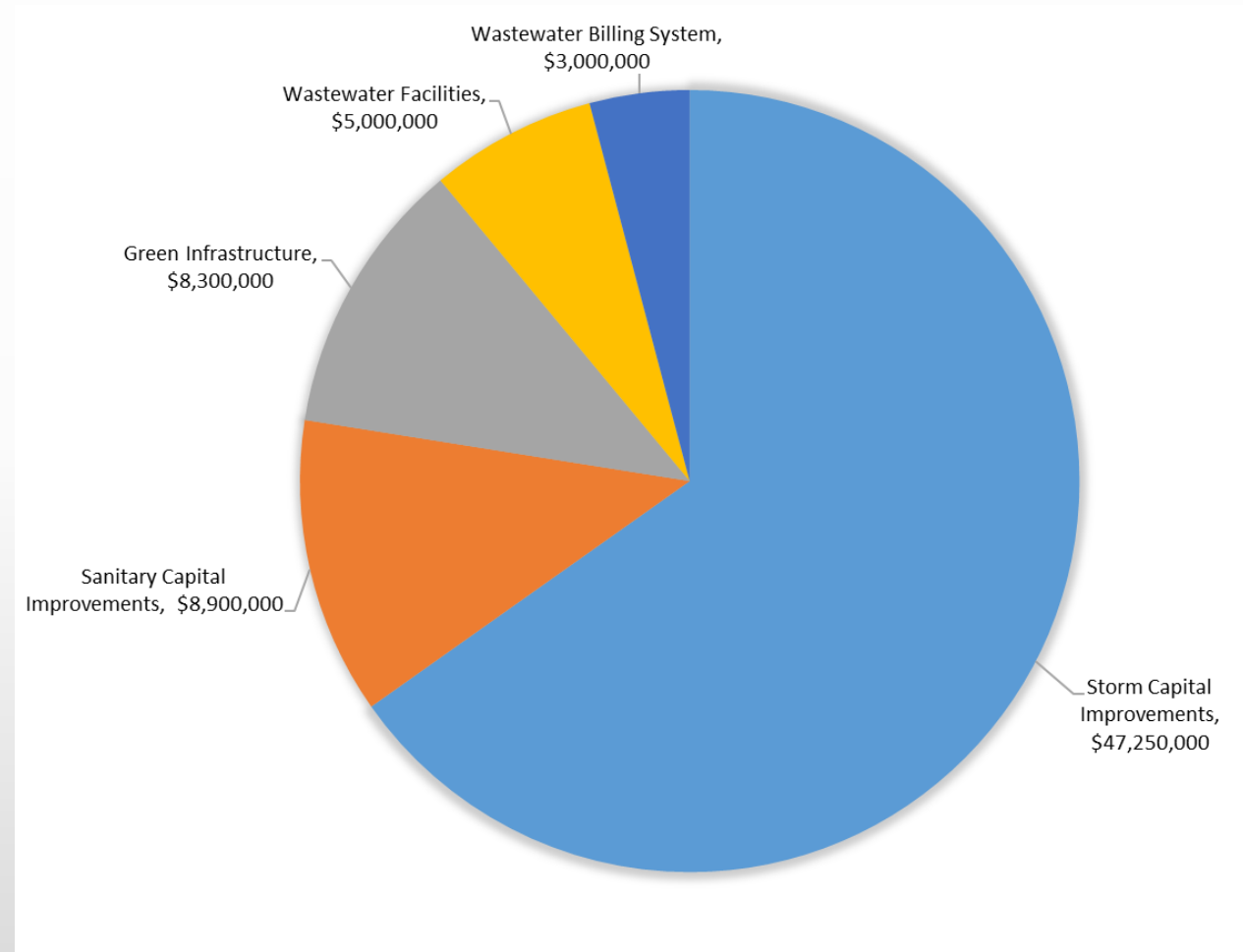
- E. 16th Avenue Storm Ph2
- General Storm – Iowa & Hazel Ct
- General Storm – Bowles Ditch Ph2

Waterway Projects

- Montbello Channel Improvements Ph2 (complete)
- Globeville Levee Improvements (start)
- Weir Gulch Reach 1 (start)

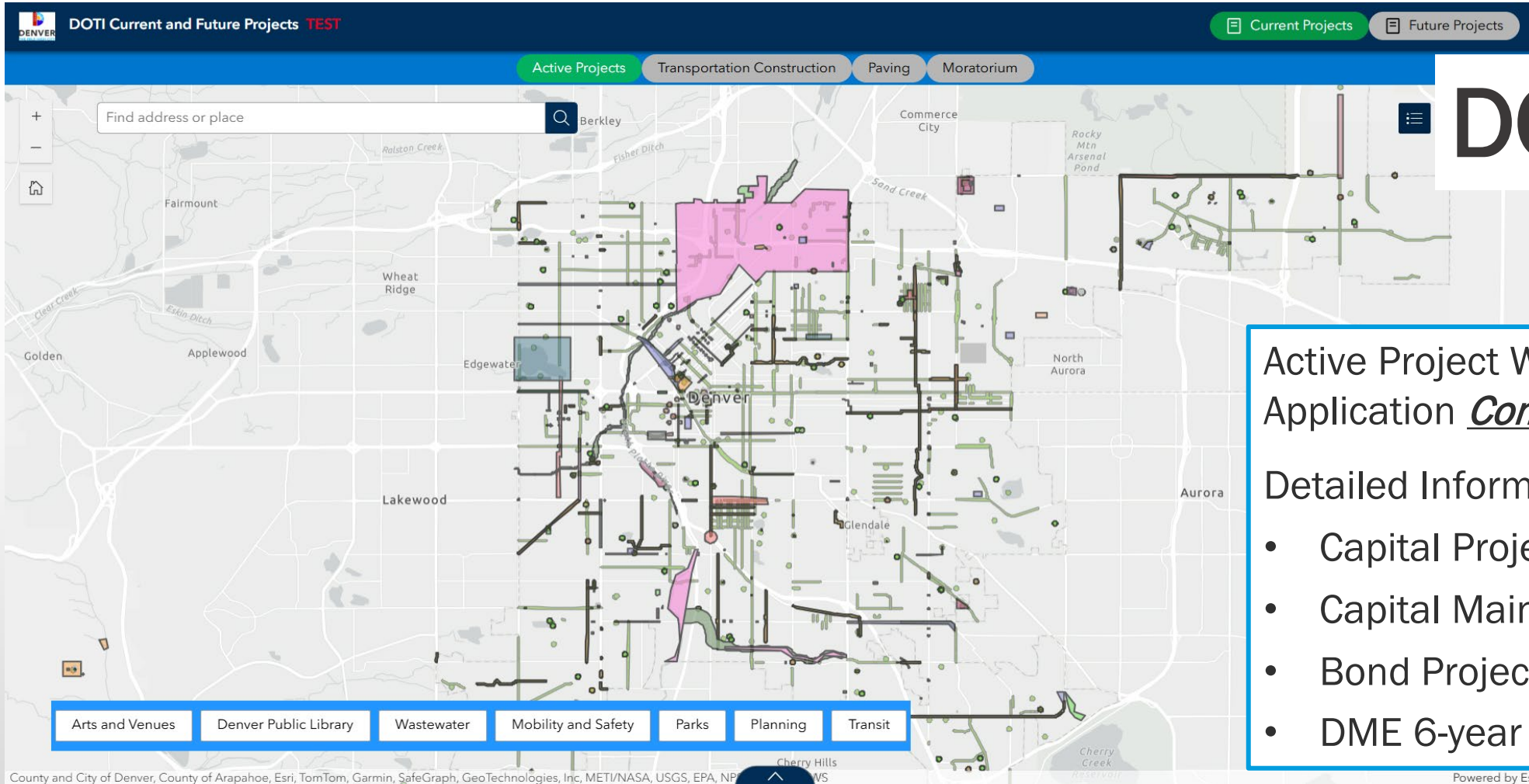
Misc.

- Heron Pond-Carpio Sanguinette Ph2 (with Parks)
- Citywide Swift GI Implementations (~15-20 locations)
- Siphon Removals/Replacements (~7-10 locations)
- Sanitary Trenchless Lining (~5-6 miles)



DOTI COMPREHENSIVE PROJECT MAP

9



Active Project Web Application *Coming Soon!*

Detailed Information on:

- Capital Projects
- Capital Maintenance
- Bond Projects
- DME 6-year Plans

DOTI 2025 GOALS

Vibrant

- Start construction of 27 critical transportation, infrastructure and wastewater projects, 17 critical projects open to the public, and advance \$71M in annual maintenance to continue investing in state of good repair by 12/31/25
- Launch reshaped Solid Waste programming to achieve and maintain 95% route completion by 12/31/2025 and achieve and maintain 99% by 12/31/26
- Continue coordinate with CPD to simplify and reduce permitting time by 30% by 12/31/26

Climate

- Increase and encourage transportation options for residents to shift 1-2 car trips per week to transit, walking, rolling and biking in key areas by 12/31/26 to reduce on road transportation emissions
- Finalize 5-year plan to achieve sustainable fleet program that enables near, mid- and long-term electrification efforts by 12/31/25

Safe

- Implement Federal and Alameda SPEED program with a focus on speed enforcement cameras and grant-funded downtown safety zone safety improvements that are aimed at reducing fatalities by 50% by 12/31/26
- Initiate “Slow and Safe” improvements on 20 miles of neighborhood streets by 12/31/26 including aligned approach on context sensitive design and materials



2025 TRANSPORTATION & INFRASTRUCTURE GOALS



Vibrant

Climate

Safety

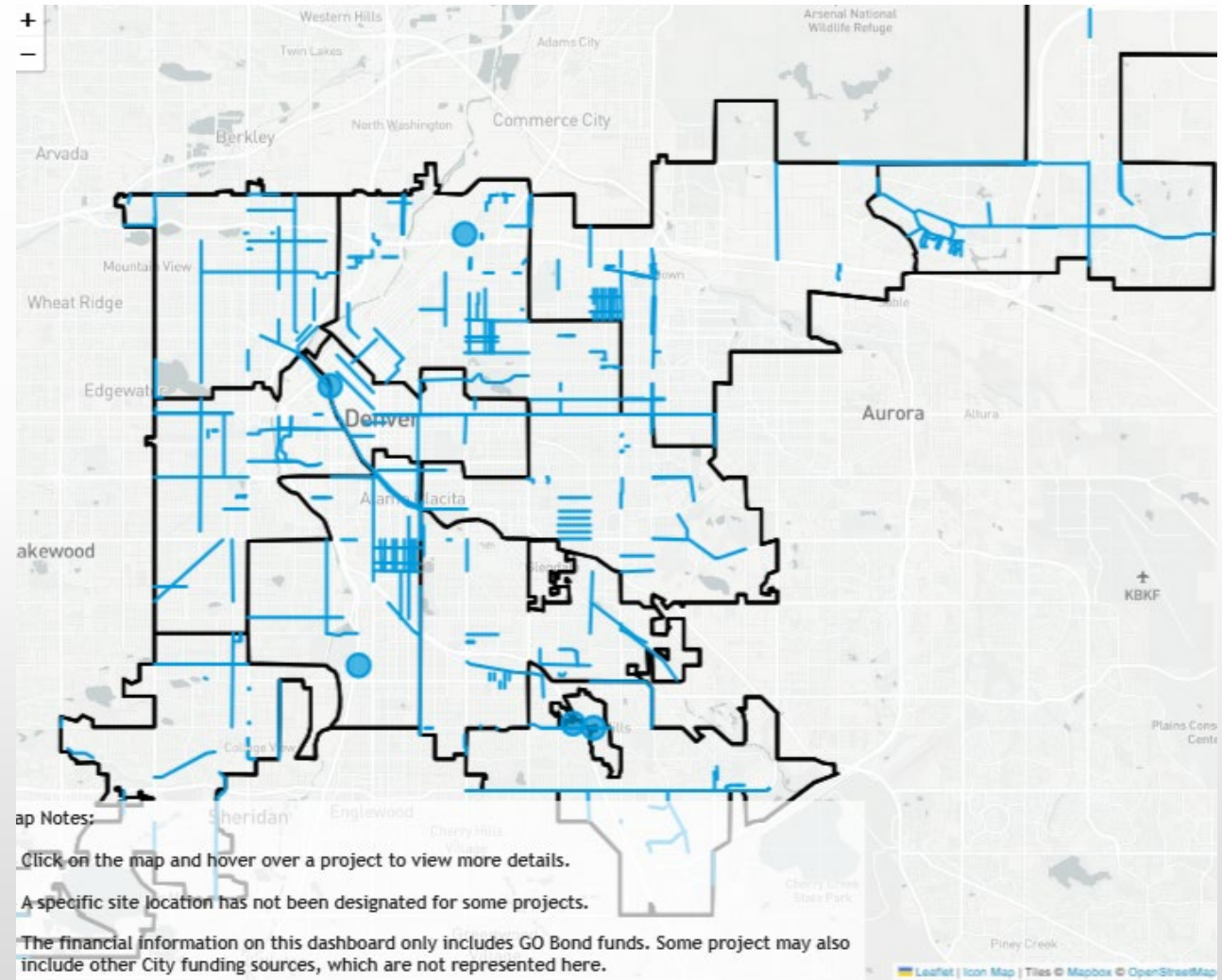
- ✓ Projects
- ✓ Operations & Maintenance
- ✓ Permitting
- ✓ Solid Waste
- ✓ Sidewalks
- ✓ Vibrant Downtown

DOTI PROJECT DELIVERY

Transportation and Core Infrastructure: 22 Bond Projects started and 12 including 16th St Mall open, \$60M invested in annual maintenance

Wastewater: 5 project started, 3 signature projects open and \$11.75M investment in annual maintenance

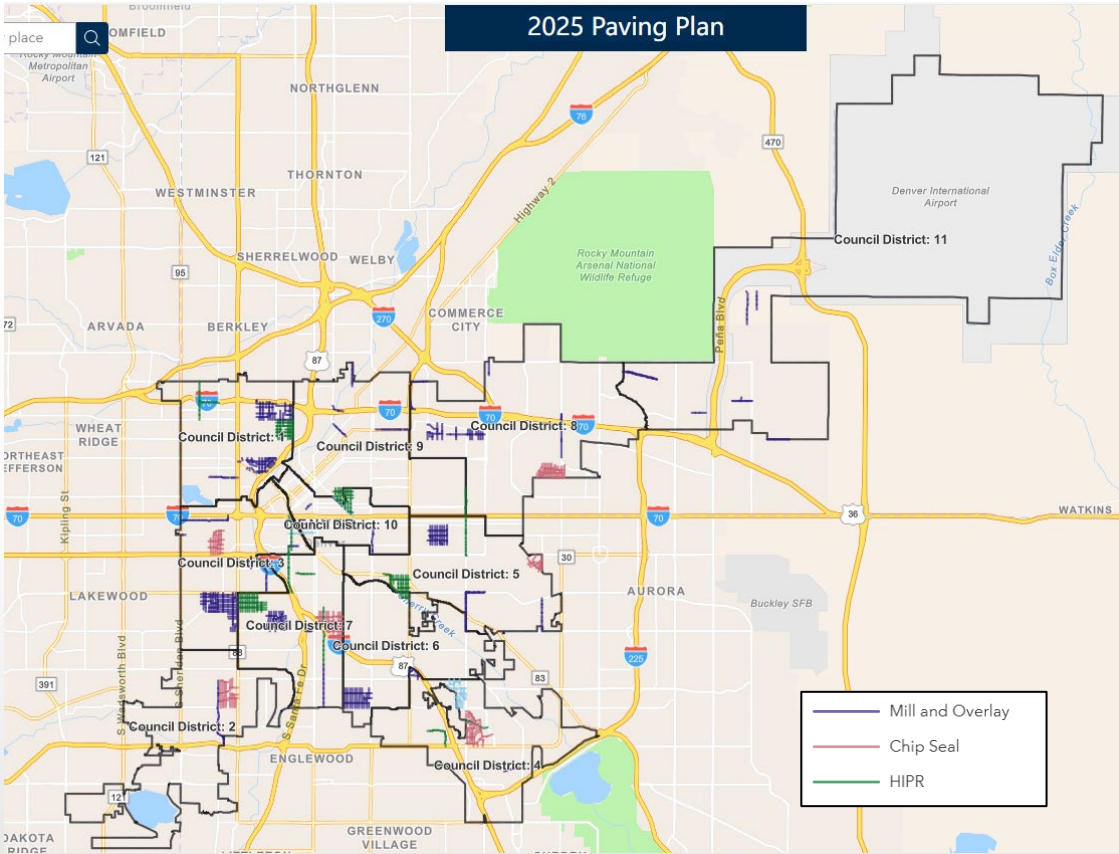
- Example projects started:
 - Alameda Ave. Underpass Replacement, Buchtel & Colorado Blvd Intersection Improvements High Line Canal Connections, Washington Street Reconstruction (47th to 52nd), Acoma Shared Street, Denver Fire Station 40, Eugene Field Branch Library Renovation, Heron Pond-Carpio Sanguinette Park Phase 2, Globeville Levee Phase 2/48th Outfall
- Example projects opened:
 - West Colfax Transit Enhancements, Peoria Multimodal Improvements (Phase 2), Montbello Channels from 56th to Maxwell, E. 16th Ave. Storm (Upper Montclair)



Operations & Maintenance

Category	Constrained KPI
Mill/Overlay	76 PCI/370 lane miles
Curb and Gutter	35K LF
Street Sweeping*	Meeting posted requirements; 5 days/wk downtown; non-posted 1x/mo (Apr-Nov)
Concrete Ramps (ADA)	1000 ramps/year (does not include private development)
Pothole Patching*	5 days or less to repair
Wastewater Infrastructure Maintenance	<ul style="list-style-type: none"> - 4.6 million feet of pipes cleaned - 1.2 million feet inspected
Streets Infrastructure Maintenance (ped bridges, median, vertical elements)*	Medians – 1x/yr. Ped Bridges – 3x/year Svc vertical elements – 1.5 mo Bulb outs – complaint only
Snow*	55 trucks

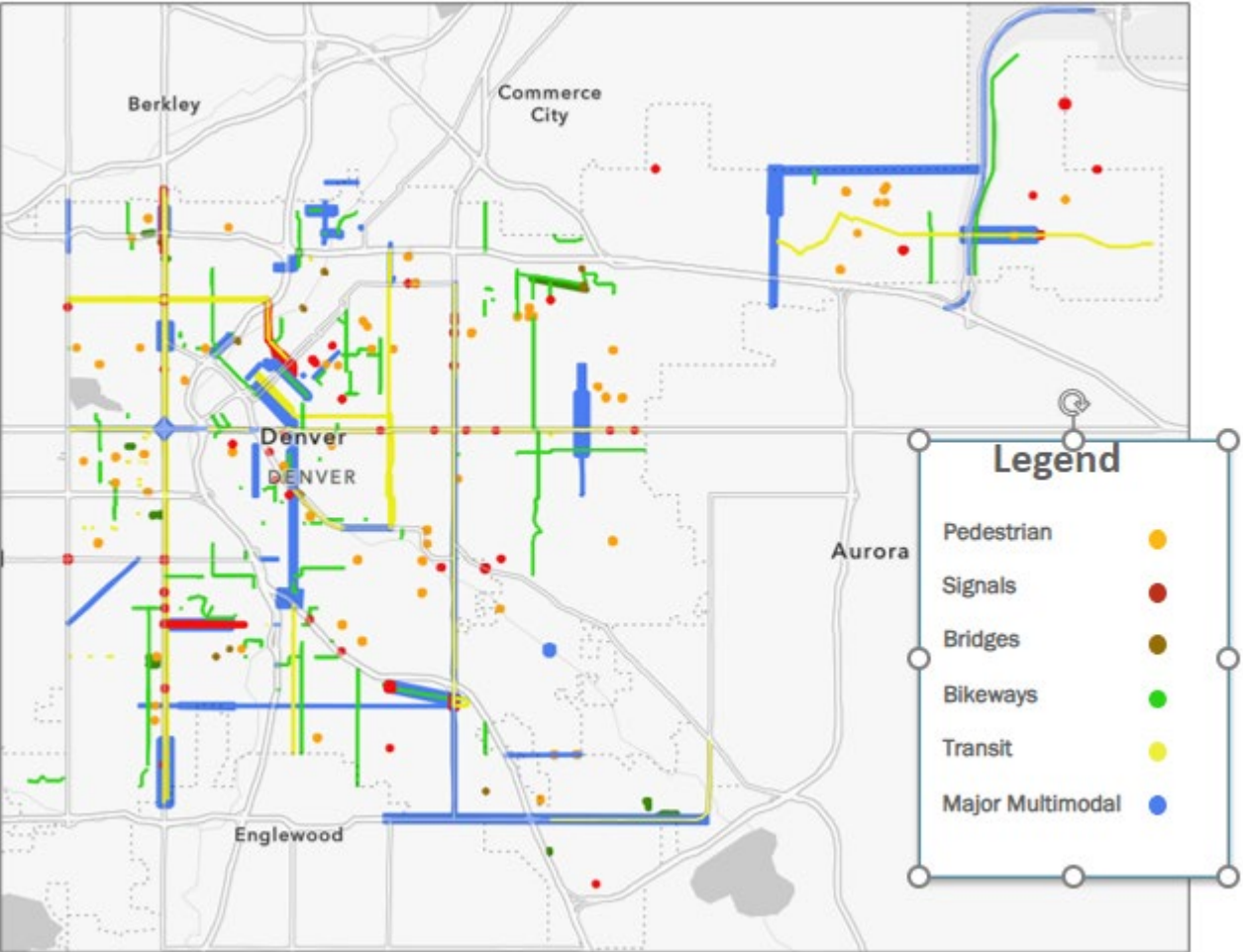
**General Fund Programs*



THE REST OF THE TRANSPORTATION STORY

DENVER MOVES EVERYONE

DME INTERACTIVE MAP

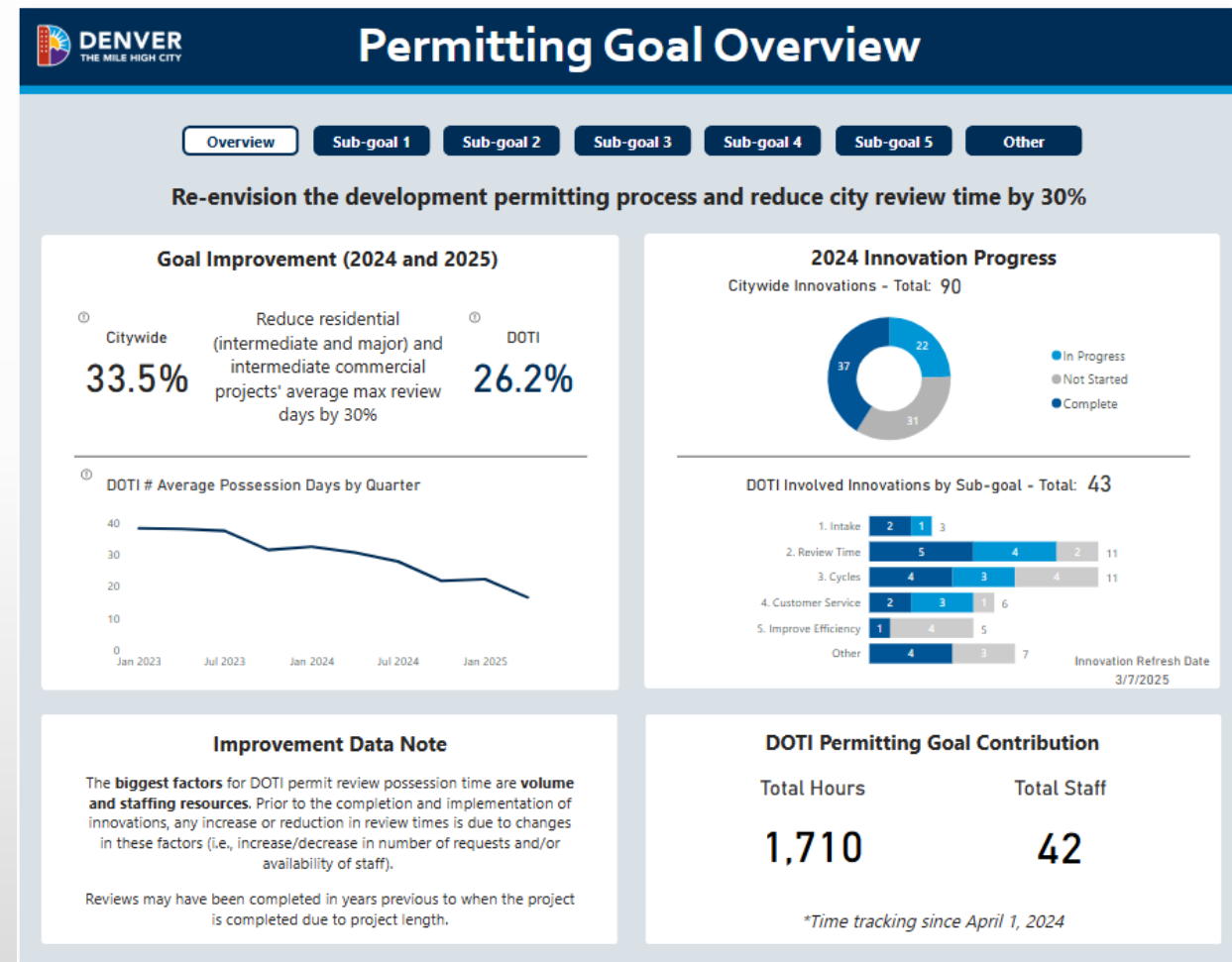


DME 2025 Project Overview			
	Planning	Design	Construction
Major Multimodal & Bridges	15	29	21
Pedestrian Intersections		49	23
Safe, Slow Streets with Bikeways		3 Networks	3 Networks
Transit Corridors	8	7	31
Signals	8	31	15

DOTI PERMITTING OFFICE

Continue coordination with CPD and DPO to simplify permitting processes & reduce permitting time by 30% by 12/31/26.

- Priority focus on downtown and new development
- Update & Simplify Encroachment Rules & Regulations by 12/31/25
- Re-envision permitting process for rapid affordable housing efforts such as Prop 123
- Complete Wastewater Regulatory Modernization Study by 12/31/25
- Improve customer experience while ensuring DOTI's strategic values, authorities, and employee culture are effectively represented.



SOLID WASTE MANAGEMENT

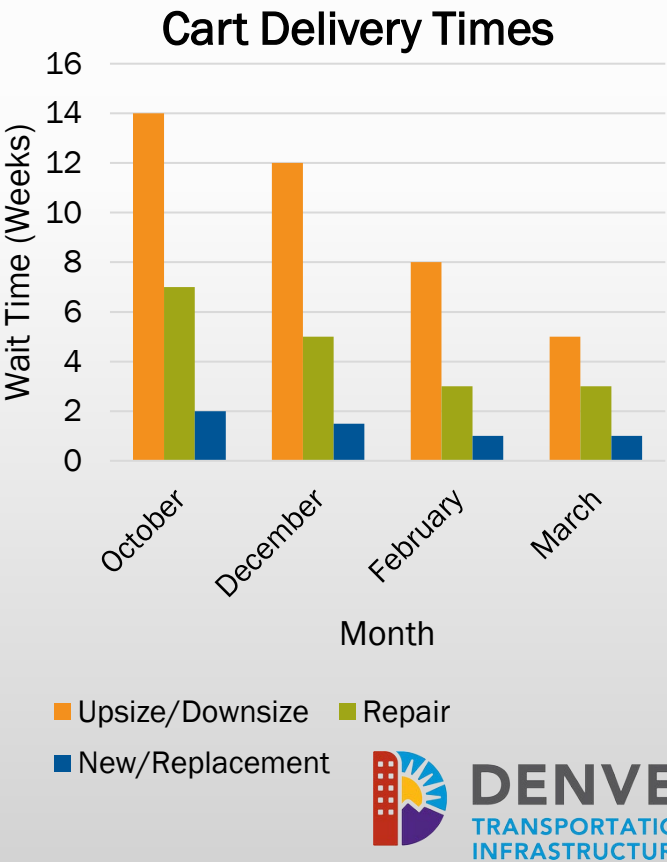
Launch reshaped Solid Waste programming to achieve and maintain 95% route completion by 12/31/2025 and achieve and maintain 99% by 12/31/26.

Quarter 1 Route Completion*		
Trash	Recycling	Compost
100%✓	100%✓	100%✓

Quarter 1 Tonnage		
Trash	Recycling	Compost
33,962	8,488	2,493

*Since January 6th, 2025, Service changes

Compost Rollout	
Carts Delivered in 2025	Current Compost Customers
19,000+	70,500+
Contamination Rate: 1%	



SIDEWALK PROGRAM

The charge: build a complete sidewalk network with urgency

- Build 355+ miles of new sidewalks
- Bring 1200 miles of sidewalks up to standard
- Fix an unknown number of miles in need of repair or reconstruction



2025 Priorities

- Program Set-up
- Citywide Sidewalk Master Plan Kick-off
- Sidewalk Gap Construction (via Integrated Construction contract; *coming soon*)
- Spot Repairs
- Engineering Services

SAFE & VIBRANT DOWNTOWN

Clean and Safe Improvements

- Sign and Marking Refresh – ongoing
- Street Sweeping – adding weekday/weekend hours as possible
- Graffiti Removal – 2 dedicated trucks/crews as equipment allows
- Traffic Signals – 60+ preventative maintenance checks performed
- Blake/Market - vertical element reconfiguration
- Glenarm Plaza – constructed/programmed by May 31st
- Xcel Street Lighting Inventory – 31 repair needs identified, most completed, ongoing monitoring
- Construction moratorium – May 1st through September 8th
(*does not include work associated with 16 Street)





2025 TRANSPORTATION & INFRASTRUCTURE GOALS



Vibrant

Climate

Safety

- ✓ Mode Shift
- ✓ Sustainable Fleet
- ✓ Innovation & Partnerships

DENVER MOVES EVERYONE

DME DELIVERS



MODE SHIFT

Increase and encourage transportation options for residents to shift 1-2 single occupancy vehicle (SOV) trips per week to transit, walking, rolling and biking in key areas.

- Partnering with CASR in launching an incentive campaign that pays residents to shift trips and reduce transportation emissions.

Mode Shift Building Blocks



Encourage sustainable transportation options



Give people more transportation choices



Build more sustainable transportation infrastructure



Advance policy that supports sustainable transportation



DENVER CONNECTOR

DENVER
connector

**Free Neighborhood
Ride Share Service**

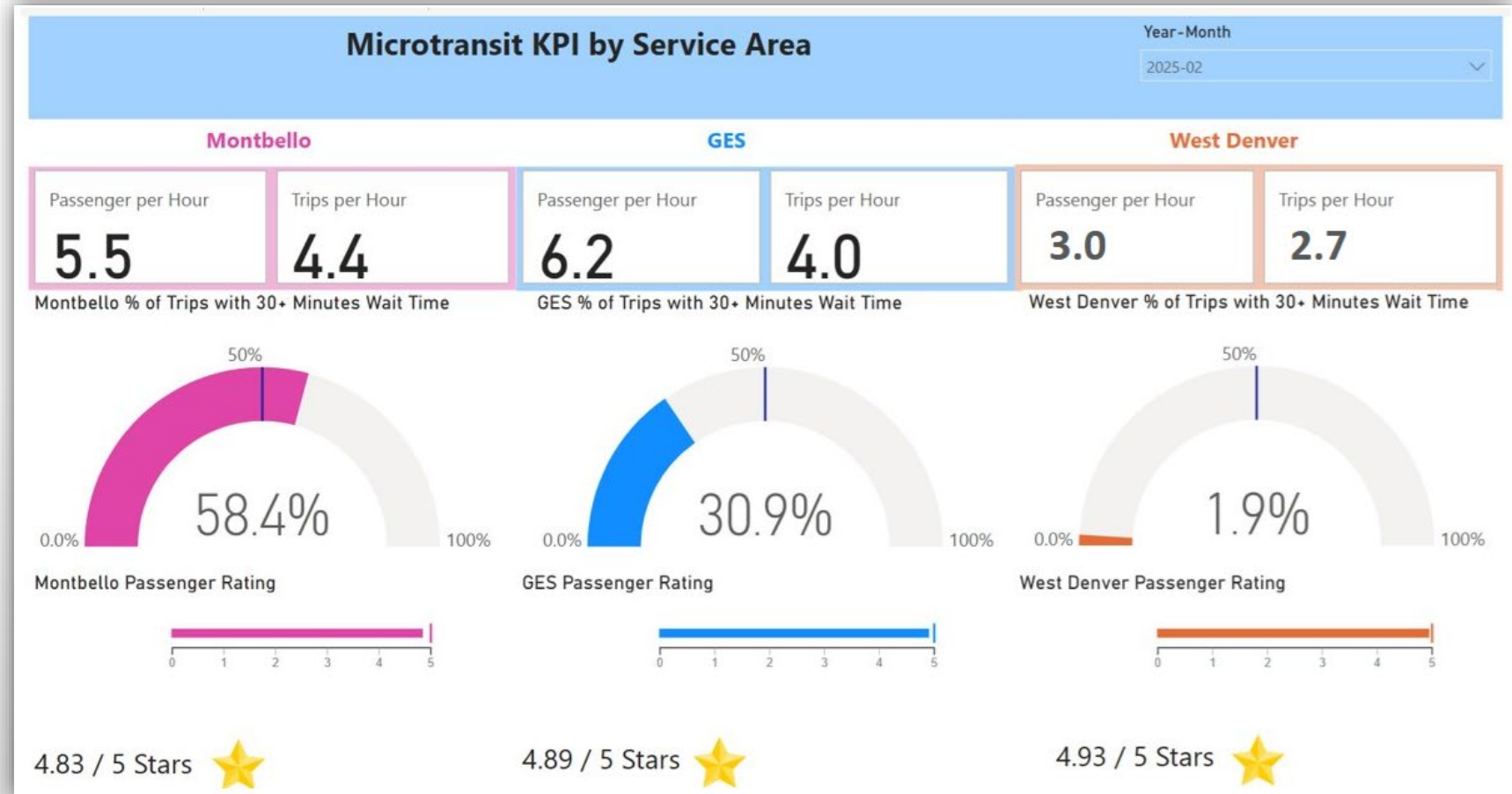


**Servicio Gratuito de
Transporte Compartido en el
Vecindario**

Search "Denver Connector" in your
app store or call

Busca "Denver Connector" en su tienda
de aplicaciones o llame

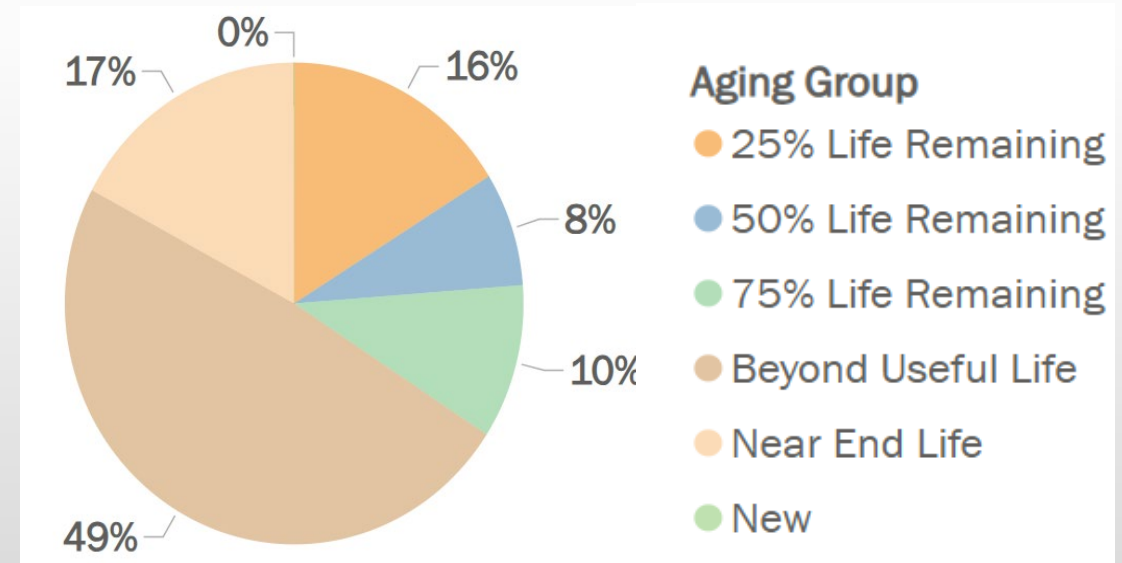
720-905-4438



DENVER FLEET PROGRAM

Finalize 5-year plan to achieve sustainable fleet program that enables near, mid- and long-term electrification efforts by 12/31/25.

- Begin implementation of **fleet electrification**, including both vehicle replacements and necessary infrastructure improvements.
 - Planned Fleet Replacement Fund Process 2026
 - Facility Condition Assessment Program
 - EV Vehicles (Citywide Goal)
 - EV Rear Loader – Expected Soon!
 - Fleet Sustainability Study



PARTNERSHIPS & INNOVATION

How can DOTI begin to engage in and leverage meaningful partnerships to advance actionable innovation opportunities and ideas in the smart cities space as it relates to mobility, safety and sustainability?



Smart Futures Lab & Innovation Hub:
“Living lab-as-a-service” for piloting,
testing and adopting new tech related to
improving:

- Asset condition assessments across the universe of DOTI assets
- Vulnerable road user safety
- Detection and enforcement capabilities
- Robotics and other automation usage
- Parking and Curbspace enhancements

Reimagining ROW Partnerships

- Exploring Mobility and Digital Information Services Hub concepts
- Exploring new opportunities for Right-of-Way amenities and usage



2025 TRANSPORTATION & INFRASTRUCTURE GOALS



- ✓ SPEED Safety Program
- ✓ Slow & Safe Streets with Bikeways
- ✓ Bridge Conditions
- ✓ Employee Safety

SPEED SAFETY PROGRAM

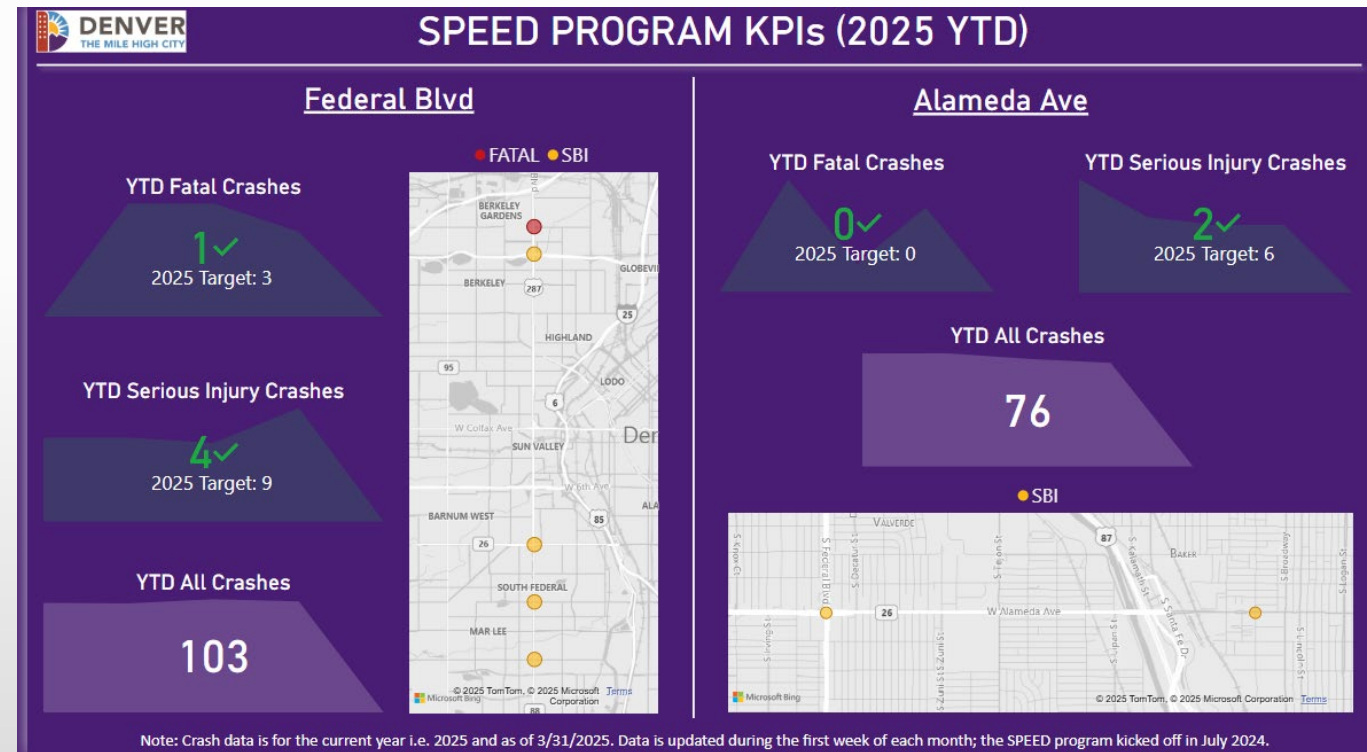
Implement Federal and Alameda SPEED program with a focus on speed enforcement cameras and grant-funded downtown safety zone safety improvements aimed at reducing fatalities by 50% by 12/31/26.

Safety Improvements:

- Speed Limit Sign Density + Feedback Signs
 - +Speed Reduction Marketing Campaign
- Program Traffic Signal (Re)Timing + Protected Left Turns
- Engineer Late Night Signal Timing
- Enhance / Refresh Pedestrian Crossings + Leading Pedestrian Intervals + Visibility (Streetlights & Daylighting)
- Deploy Speed Camera Enforcement

Next Steps:

- Speed Safety Camera City Council & multi-agency alignment & deployment.
- Receive final SS4A downtown grant agreement from the federal government.



SLOW & SAFE STREETS

Initiate “Slow and Safe” improvements on 20 miles of neighborhood streets by 12/31/26 including aligned approach on context sensitive design and materials.

Safer Intersections



Bulb-out

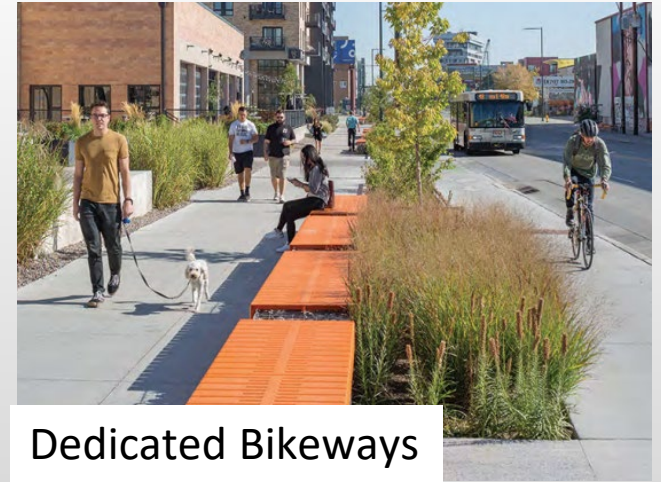
Slower Speeds



Traffic Circle



More Safe Crosswalks



Dedicated Bikeways

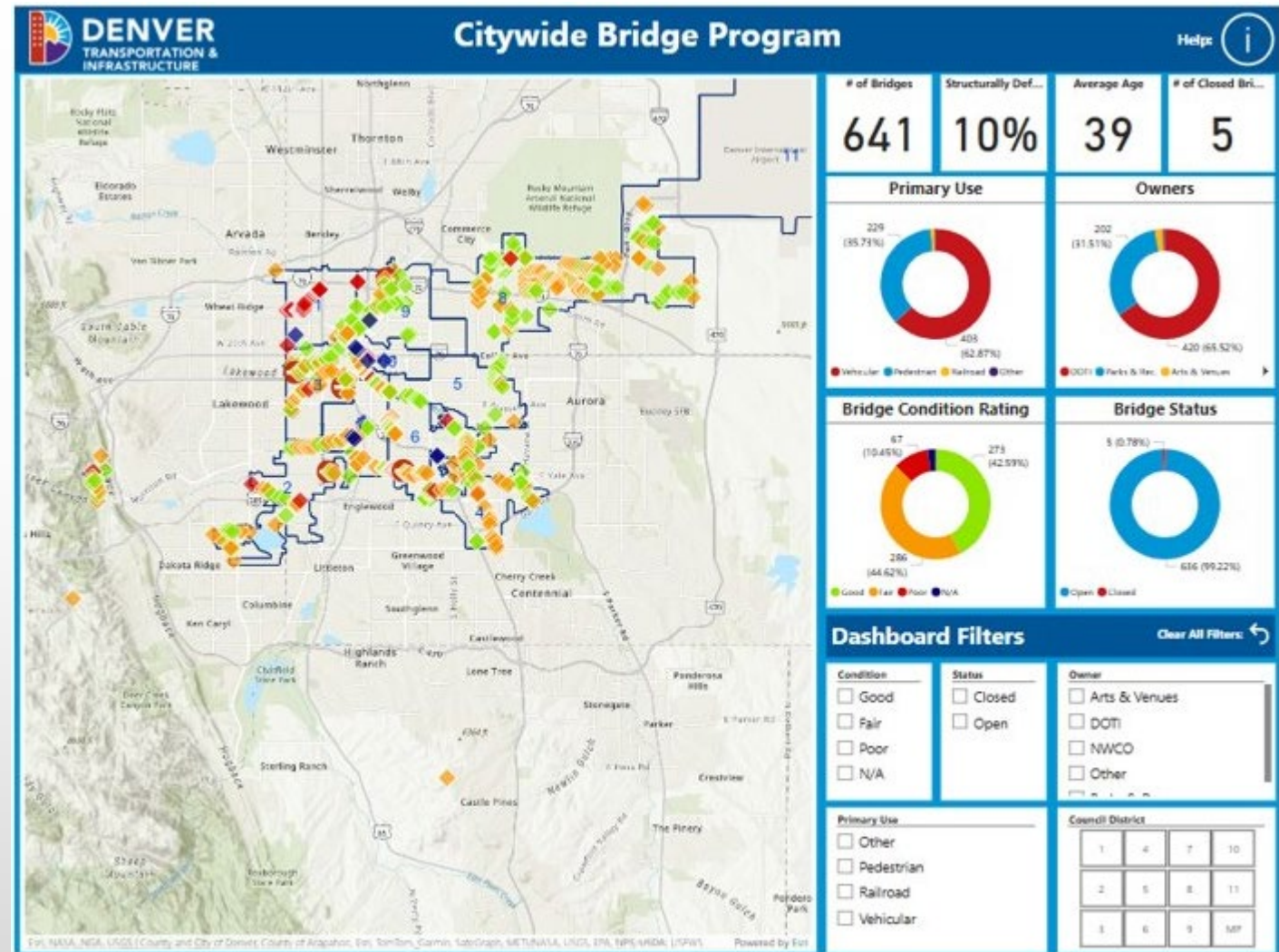
Delivering Safer Streets for All

CITYWIDE BRIDGE PROGRAM

Bridge Condition Safety

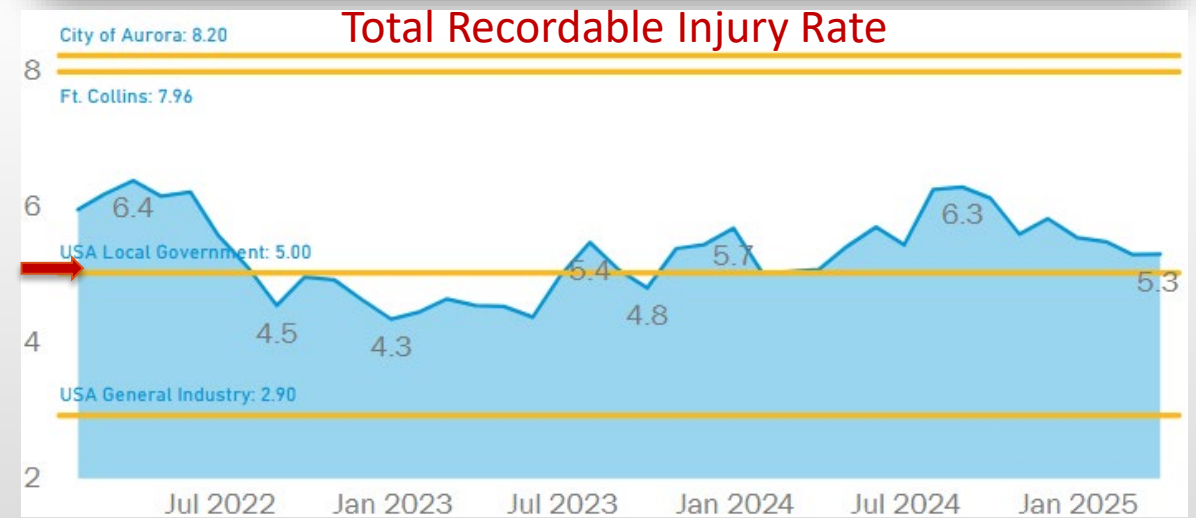
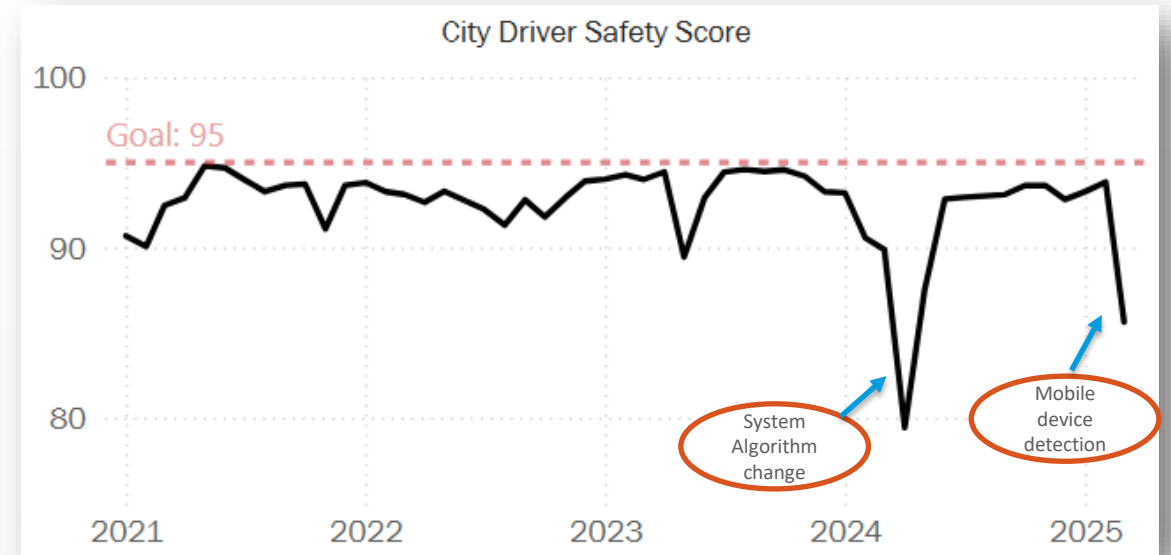
Maintain 5% or less structurally deficient infrastructure citywide. These are bridges that are rated in poor condition or have insufficient load carrying capacity.

- Current vehicular structural deficiency: **13.8%**
- Current structural deficiency goal: **<5.0%**



EMPLOYEE SAFETY

- 95% Driver Safety Goal
- Implementing mobile device detection in City vehicles in response to state law
- 90% Safety Training Completion Goal
- DOTI Total Recordable Injury Rate (TRIR) below the Local Government benchmark rate





QUESTIONS?

RESOURCES

Shared Bike and Scooter Program
Sidewalk Program
Solid Waste Volume Based Pricing
Solid Waste & Sidewalk Rebates
Denver One Water Plan
Colfax BRT
Citywide Bridge Program
Citywide Parking
Street Sweeping
SPEED Safety Program
Citywide Paving Program
Denver Snow Program
Work4Denver Program
Denver Moves Everyone Map

[Denvergov.org/RidewithRespect](https://denvergov.org/RidewithRespect)

[Denvergov.org/Sidewalks](https://denvergov.org/Sidewalks)

[Denvergov.org/ExpandedCollection](https://denvergov.org/ExpandedCollection)

[Denvergov.org/DotiRebates](https://denvergov.org/DotiRebates)

[Denvergov.org/OneWater](https://denvergov.org/OneWater)

[Denvergov.org/ColfaxBRT](https://denvergov.org/ColfaxBRT)

[Denvergov.org/Bridges](https://denvergov.org/Bridges)

[Denvergov.org/Parking](https://denvergov.org/Parking)

[Denvergov.org/StreetSweeping](https://denvergov.org/StreetSweeping)

[Denvergov.org/VisionZero](https://denvergov.org/VisionZero)

[Denvergov.org/DenverPaving](https://denvergov.org/DenverPaving)

[Denvergov.org/Snow](https://denvergov.org/Snow)

[Denvergov.org/DoBusinesswithDOTI](https://denvergov.org/DoBusinesswithDOTI)

<https://experience.arcgis.com/experience/650cf18e34554f37ae004f964792b5da>

