



Office of Climate Action, Sustainability, and Resiliency

Presentation to SAFEHOUSE Committee
April 21, 2021

Agenda

- Climate Protection Fund
- Sustainability Advisory Council

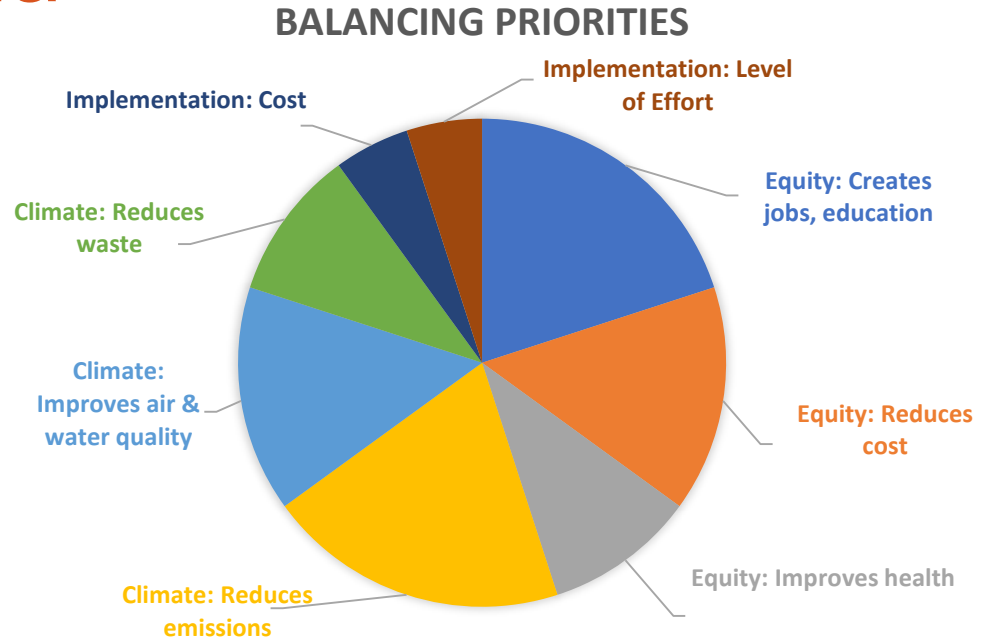
Climate Protection Fund

Climate Protection Fund (2A) Allowable Uses

- Workforce development in clean energy technology and management of natural resources.
- Solar power, battery storage, and other renewable energy technology.
- Neighborhood-based environmental and climate justice programs.
- Community-scale adaptation/resiliency to prepare for a changing climate.
- Affordable, clean, safe and reliable transportation (walking, biking, transit, electric vehicles, and neighborhood-scale transit).
- Energy efficiency for homes, offices and industry.

CPF Funding Criteria

- 6 allowable uses
- 50% of spend must endeavor to have “strong lens toward equity, race, and social justice”
- How to value the impacts: emissions, equity, jobs, mobility, etc.?



Example draft criteria: Workforce

- **Quality** of jobs: % of CPF spending with labor standards
- **Access** to jobs: % CPF-funded jobs held by residents from under-resourced communities (NEST Neighborhoods), individuals with barriers to career-track employment, and transition industry workers
- **Quantity** of jobs: Number of jobs supported by CPF (direct and indirect)

Example draft criteria: Vehicles

100% of all-electric vehicle + charging equipment

- Vehicles serving the public/Denver residents
- Vehicles owned and operated by a CBO located in a NEST neighborhood for public or internal uses
- Vehicles owned and operated by a CBO for public facing uses
- Vehicles owned and operated by a business, where the vehicle is serving the public and the business is located in a NEST neighborhood or is equity focused

Incremental cost of plug-in hybrid electric vehicle + charging equipment

- Vehicles owned and operated by a CBO located in a NEST neighborhood for public or internal uses
- City shuttles or micro-transit, RTD, DPS busses
- Vehicles owned and operated by a business, where the vehicle is either serving the public or the business is located in a NEST neighborhood or is equity focused

No funding

- Private fleets that do not serve the public
- CNG vehicles

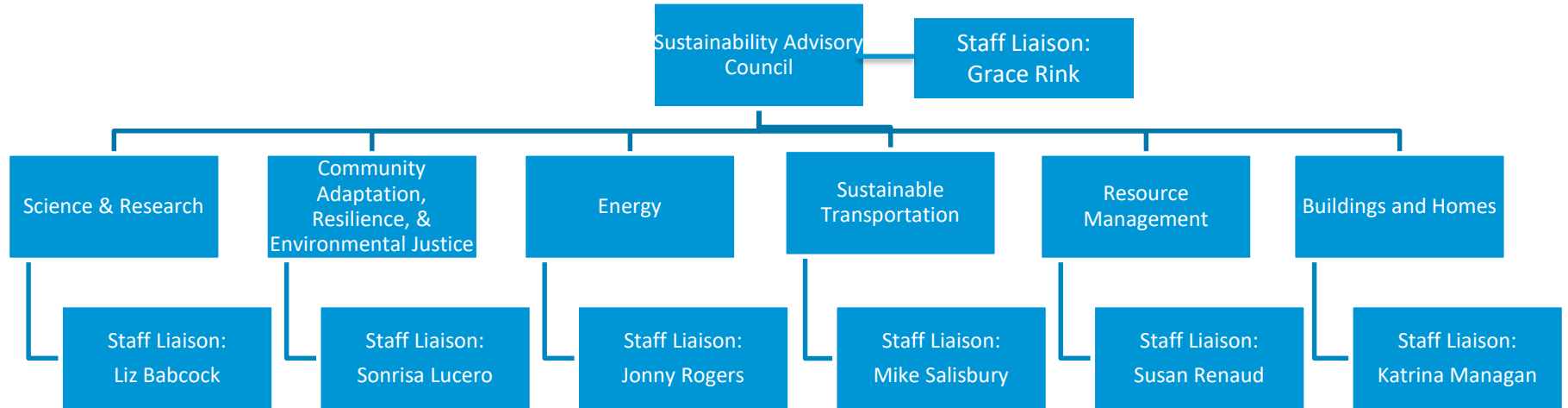
2021 Rapid Investments

- 9 community solar installations
- 70 e-bikes for essential workers
- RFP for energy efficiency in affordable housing
- Multiple RFPs for community-based projects
- Program staff
 - Resiliency planning
 - Workforce Development
 - Buildings project admin

Info session for
non-profits on
April 29, 6-8 pm
Register at:
[https://bit.ly/CPF
April2021](https://bit.ly/CPFApril2021)

Sustainability Advisory Council

SAC Structure



2021 SAC Voting Members

15 Total Members

12 Committee Co-Chairs

2 At-Large committee members

1 Member of City Council



* City Council member is selected by the City Council President, not appointed by the Mayor.