



# MAYOR'S OFFICE OF THE NATIONAL WESTERN CENTER

01.28.2026 – Denver City Council, South Platte River Committee

# AGENDA

## Mayor's Office of the National Western Center

- Program Update
- Resolution Request



# NWC CAMPUS PLAN

1. RTD Transit Station
2. Brighton Blvd. – 47<sup>th</sup> to Race Court
3. South Platte Riverfront
4. New National Western Drive
5. Stockyards Event Center
6. The Yards Multi-Use Space
7. Pedestrian Bridge
8. 48<sup>th</sup> Ave/Bettie Cram Drive Bridge & 51<sup>st</sup> Ave Bridge
9. Livestock Center
10. Equestrian Center Development
11. District energy system's central utility plant (CUP)
12. CSU Spur
13. Maintenance & Operations Facility
14. DRIR Rail Corridor
15. WSSA - The Legacy
16. Environmental Remediation
17. Marion Underpass
18. Triangle Community Vision Plan
  - Arena
  - Expo Hall Space
  - 1909 Building rehabilitation
  - Additional Development (housing, mixed-use, other TBD)



# GLOBEVILLE, ELYRIA AND SWANSEA PROGRAM OF PROJECTS



## PoP Communications

- Centralizing all construction-related information and impacts.
- Keep community informed about ongoing construction activities.
- Delivering consistent and clear messaging to the community.
- Maintain connectivity with community throughout construction.
- Coordination and alignment with all projects and construction teams
- Collaborative effort between the National Western Center (NWC) and the Denver Department of Transportation and Infrastructure (DOTI)

# ORDINANCE / RESOLUTION REQUEST

Contract #: 202581456

# RESOLUTION REQUEST

Approves contract with AMES CONSTRUCTION, INC. for \$12,742,210.00 and term of NTP + 550 Days for the construction of a pedestrian bridge on the National Western Center campus in Council District 9 (DOTI-202581456).

**Scope of Services:** The project consists of constructing a new single-span pedestrian bridge between the 48th and Brighton RTD Station and the National Western Campus over nine railroad tracks. The project includes bridge landing plazas, elevator towers with HVAC systems, and staircases. Other key elements to construct include lighting at the landing plaza facilities and inside the bridge, IT/Fiber connectivity for communications and security, and a pedestrian connection to Brighton Boulevard.

**Source of Funds:** NWC Program Funding, USDOT Reconnecting Communities & Neighborhoods Grant

**Estimated Schedule:** Q2 2026 - Q4 2027



# PEDESTRIAN BRIDGE

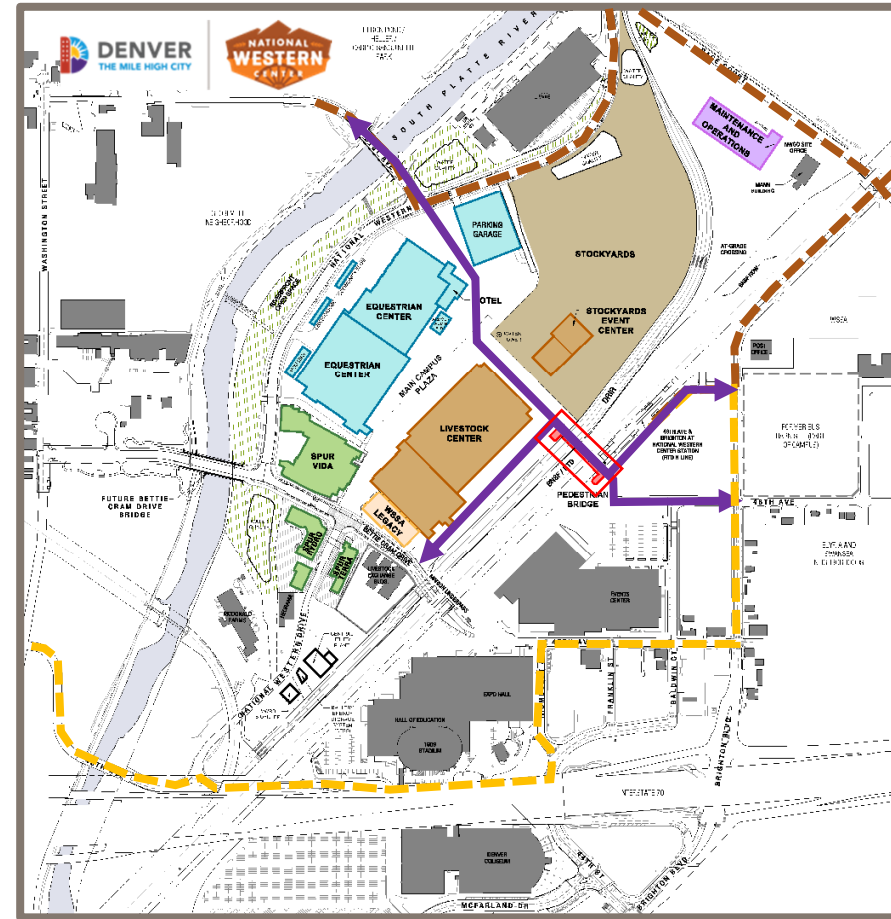
**Pedestrian Bridge** – New bridge to improve east/west campus & GES connectivity across nine railroad tracks and connect to the RTD N Line Commuter Rail at the 48<sup>th</sup> & Brighton Station.



# PEDESTRIAN BRIDGE

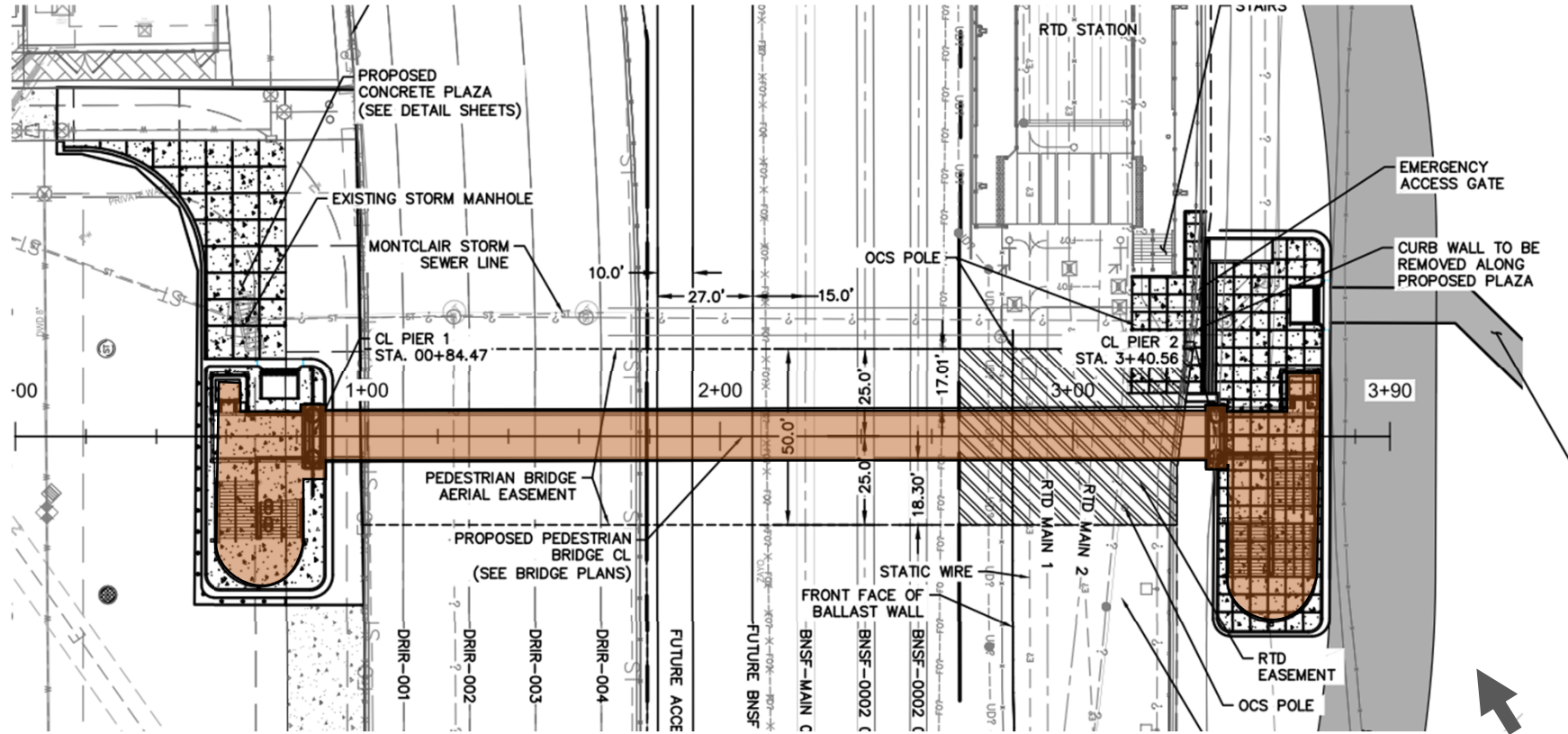
**Pedestrian Bridge** – New bridge to improve east/west campus & GES connectivity across nine railroad tracks and connect to the RTD N Line Commuter Rail at the 48<sup>th</sup> & Brighton Station.

Pedestrians/cyclists currently must go to either Race Court or 46<sup>th</sup> Avenue for east/west movements in this area. Reduces commute by approximately 1 mile.



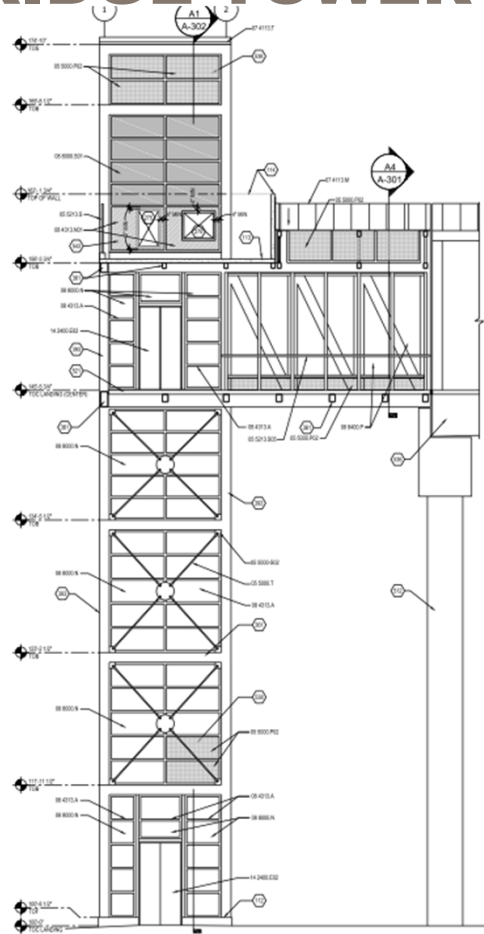


# PEDESTRIAN BRIDGE – PLAN VIEW

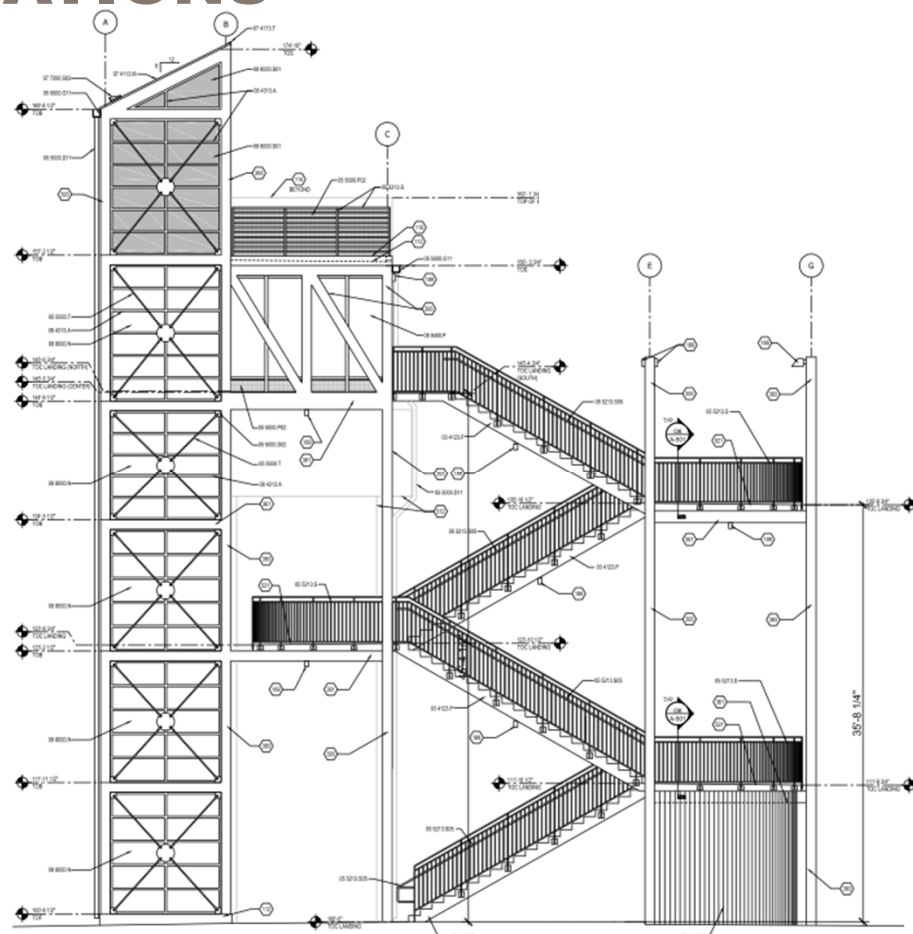




# BRIDGE TOWER ELEVATIONS



West side looking North



West side looking East



# QUESTIONS?

