

ORDINANCE/RESOLUTION REQUEST

Please email requests to the Mayor's Legislative Team

at MileHighOrdinance@DenverGov.org by **9 a.m. Friday**. Contact the Mayor's Legislative team with questions

Date of Request: 5/3/2024

Please mark one: Bill Request or Resolution Request

1. Type of Request:

Contract/Grant Agreement Intergovernmental Agreement (IGA) Rezoning/Text Amendment

Dedication/Vacation Appropriation/Supplemental DRMC Change

Other:

2. **Title:** (Start with *approves, amends, dedicates*, etc., include name of company or contractor and indicate the type of request: grant acceptance, contract execution, contract amendment, municipal code change, supplemental request, etc.)

Approves a master on-call agreement with Autumn Tree Lawn and Landscape for tree maintenance including structural tree pruning on smaller diameter trees in parks, parkways, City golf course properties, and City Facilities; scheduled tree pruning and Stump Removal and Grinding of Stumps for Parkway Trees in area A & E (map attached); and tree pruning, tree removal, structural tree pruning on Public Right-of-Ways and Public Property; Stump and debris removal, and emergency tree services on public-right-of-ways.

3. **Requesting Agency:** Denver Parks and Recreation

4. Contact Person:

Contact person with knowledge of proposed ordinance/resolution (e.g., subject matter expert)	Contact person for council members or mayor-council
Name: Ben Rickenbacker	Name: Jesus Orrantia
Email: Benjamin.Rickenbacker@denvergov.org	Email: jesus.orrantia@denvergov.org

5. **General description or background of proposed request. Attach executive summary if more space needed:**

The purpose of these on-call contracts is to establish and maintain a pool of qualified on-call general tree contractors available to respond to proposal bidding requests for the execution of the Office of the City Forester 3-year work plan. Contracts are for tree maintenance services in public spaces and private property as well as emergency tree services for a period of 3 years on as needed basis.

6. **City Attorney assigned to this request (if applicable):** Jason Moore

7. **City Council District:** Citywide

8. ****For all contracts, fill out and submit accompanying Key Contract Terms worksheet****

To be completed by Mayor's Legislative Team:

Resolution/Bill Number: _____

Date Entered: _____

Key Contract Terms

Type of Contract: (e.g. Professional Services > \$500K; IGA/Grant Agreement, Sale or Lease of Real Property): Master On-Call Contract

Vendor/Contractor Name (including any dba's): Autumn Tree Lawn and Landscape

Contract control number (legacy and new): 202473492

Location: Citywide

Is this a new contract? Yes No **Is this an Amendment?** Yes No **If yes, how many?** _____

Contract Term/Duration (for amended contracts, include existing term dates and amended dates): 3 years

Contract Amount (indicate existing amount, amended amount and new contract total): \$1,500,000.00

<i>Current Contract Amount (A)</i>	<i>Additional Funds (B)</i>	<i>Total Contract Amount (A+B)</i>
\$1,000,000.00	n/a	\$1,000,000.00

<i>Current Contract Term</i>	<i>Added Time</i>	<i>New Ending Date</i>
Effective date + 3 years	n/a	Effective date + 3 years

Scope of work:

Tree maintenance services including on public and private property described in the section groups 4,5,6 and 6A-6F. Full description of groups in executive summary.

Was this contractor selected by competitive process? Yes **If not, why not?**

Has this contractor provided these services to the City before? Yes No

Source of funds: CIP, Legacy, and Forestry General Fund

Is this contract subject to: W/MBE DBE SBE XO101 ACDBE N/A

WBE/MBE/DBE commitments (construction, design, Airport concession contracts): N/A

Who are the subcontractors to this contract? TBD

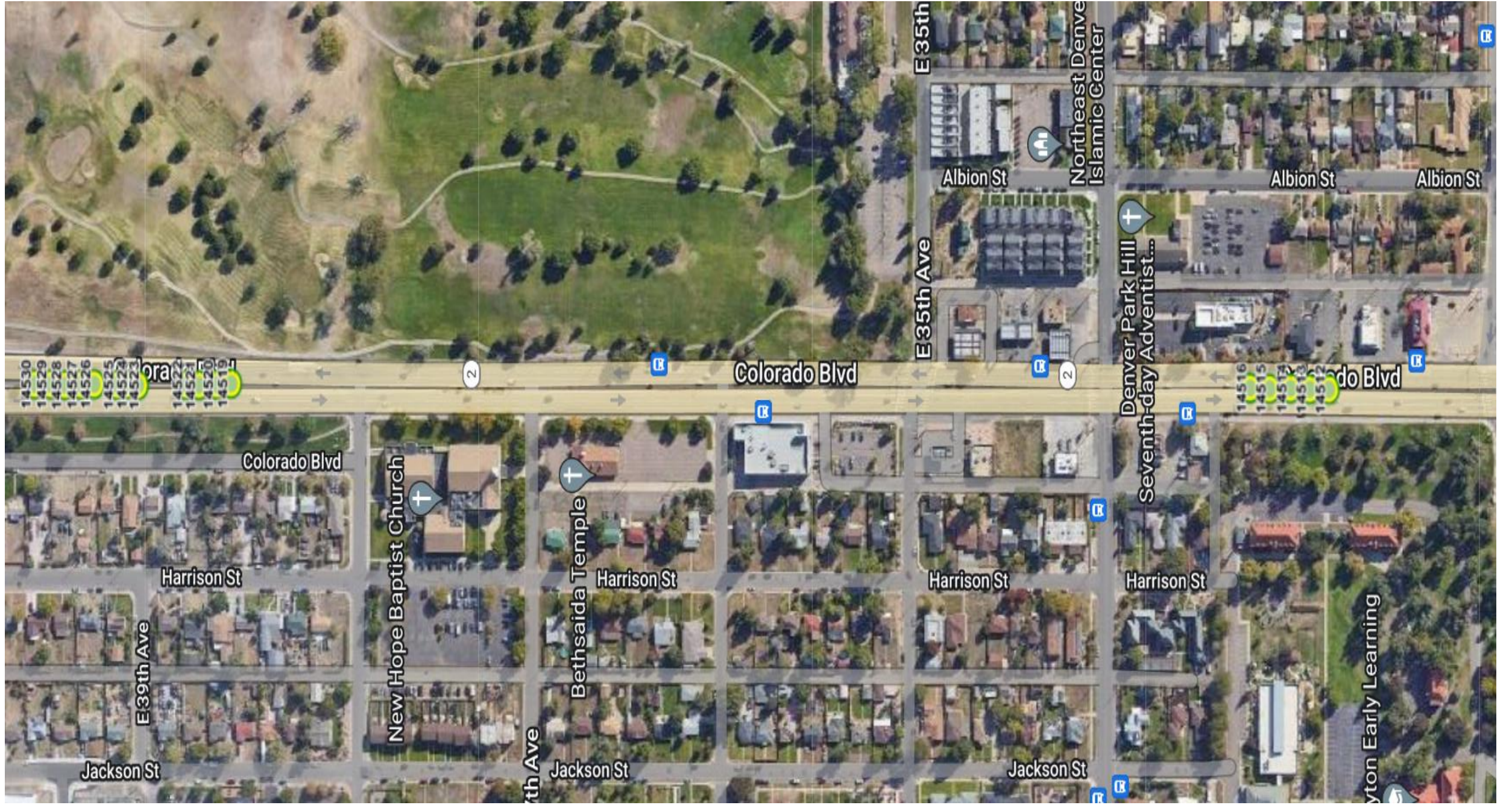
To be completed by Mayor's Legislative Team:

Resolution/Bill Number: _____

Date Entered: _____

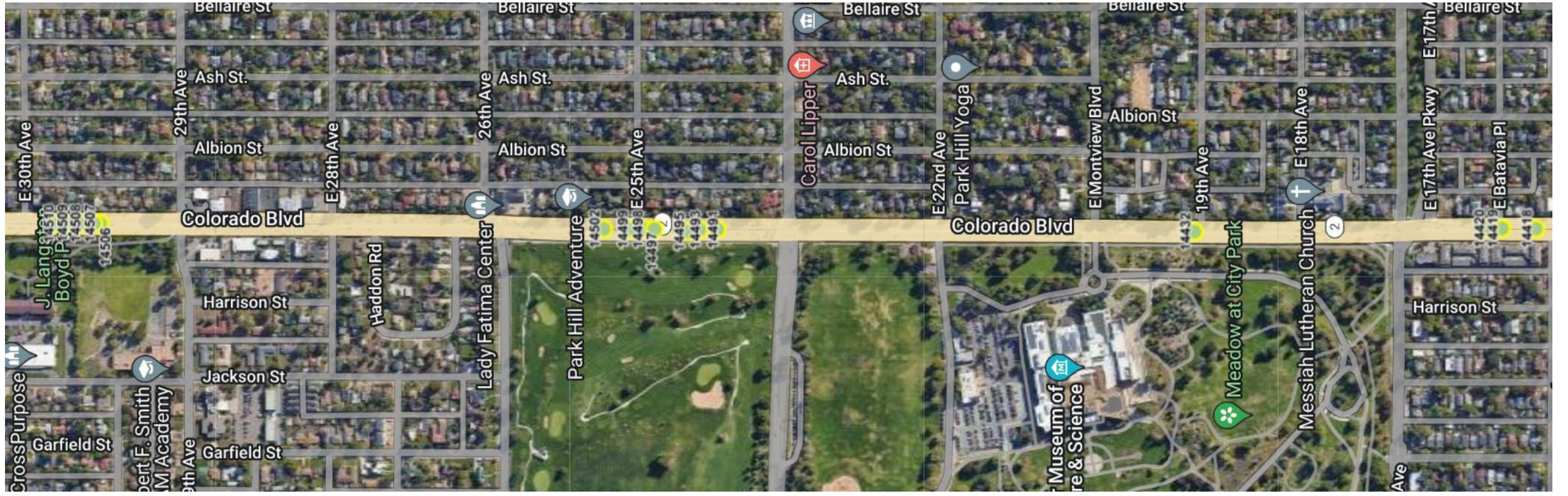
Autumn Tree Lawn and Landscape

Area A:



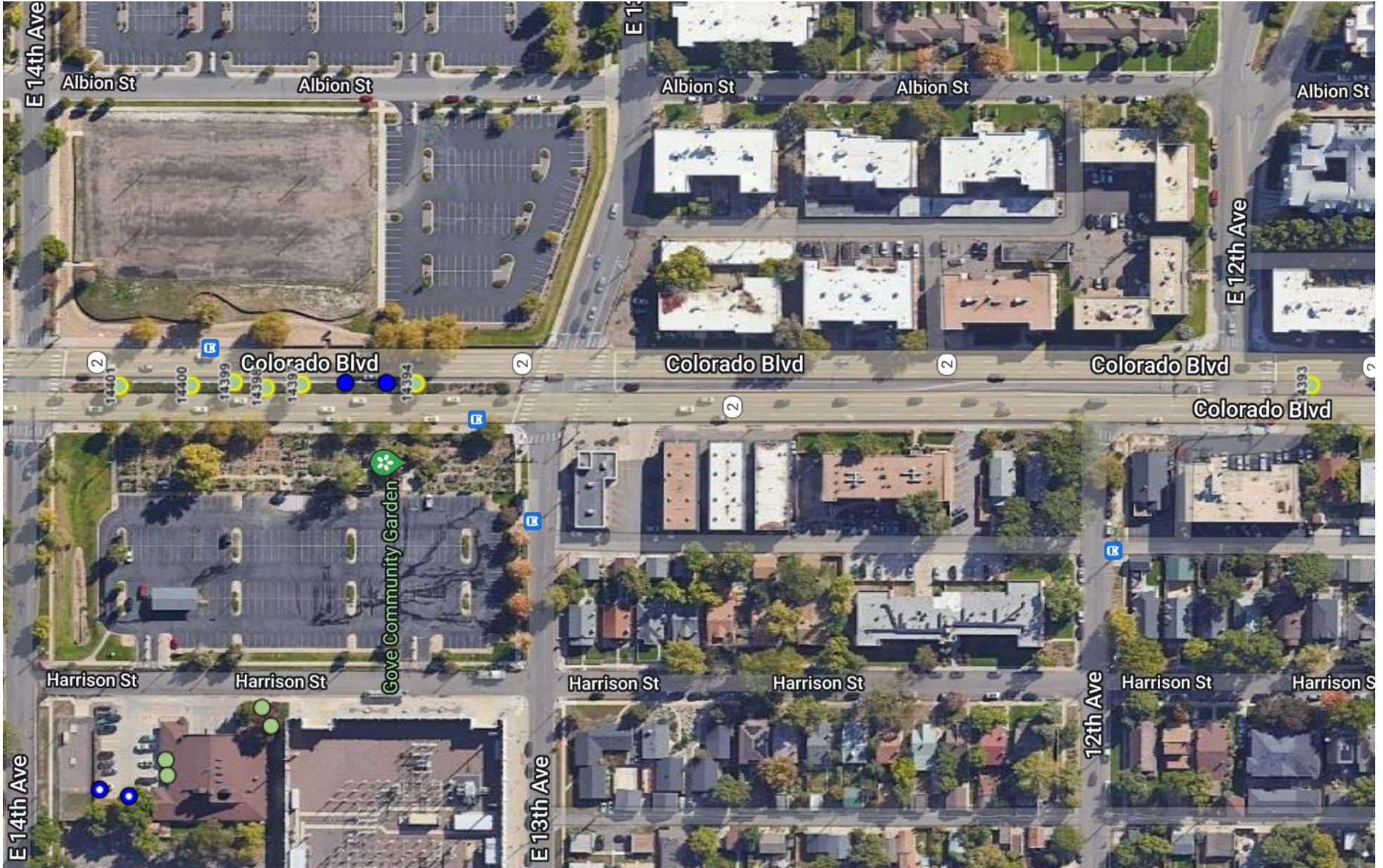
Colorado Blvd - MLK to 40th Ave (17 trees)

Site ID	Address Street	Species	Size Class
14512	3200 N COLORADO BLVD	Honeylocust (Gleditsia triacanthos)	6 to 12
14513	3200 N COLORADO BLVD	Honeylocust (Gleditsia triacanthos)	6 to 12
14514	3200 N COLORADO BLVD	Honeylocust (Gleditsia triacanthos)	6 to 12
14515	3200 N COLORADO BLVD	Honeylocust (Gleditsia triacanthos)	6 to 12
14516	3200 N COLORADO BLVD	Honeylocust (Gleditsia triacanthos)	6 to 12
14519	3800 N COLORADO BLVD	Honeylocust (Gleditsia triacanthos)	6 to 12
14520	3800 N COLORADO BLVD	Honeylocust (Gleditsia triacanthos)	6 to 12
14521	3800 N COLORADO BLVD	Honeylocust (Gleditsia triacanthos)	6 to 12
14522	3800 N COLORADO BLVD	Honeylocust (Gleditsia triacanthos)	6 to 12
14523	3800 N COLORADO BLVD	Crabapple, Flowering (Malus sylvestris)	6 to 12
14524	3800 N COLORADO BLVD	Crabapple, Flowering (Malus sylvestris)	6 to 12
14525	3800 N COLORADO BLVD	Crabapple, Flowering (Malus sylvestris)	6 to 12
14526	3800 N COLORADO BLVD	Crabapple, Flowering (Malus sylvestris)	6 to 12
14527	3800 N COLORADO BLVD	Honeylocust (Gleditsia triacanthos)	6 to 12
14528	3800 N COLORADO BLVD	Honeylocust (Gleditsia triacanthos)	6 to 12
14529	3800 N COLORADO BLVD	Honeylocust (Gleditsia triacanthos)	6 to 12
14530	3800 N COLORADO BLVD	Honeylocust (Gleditsia triacanthos)	6 to 12



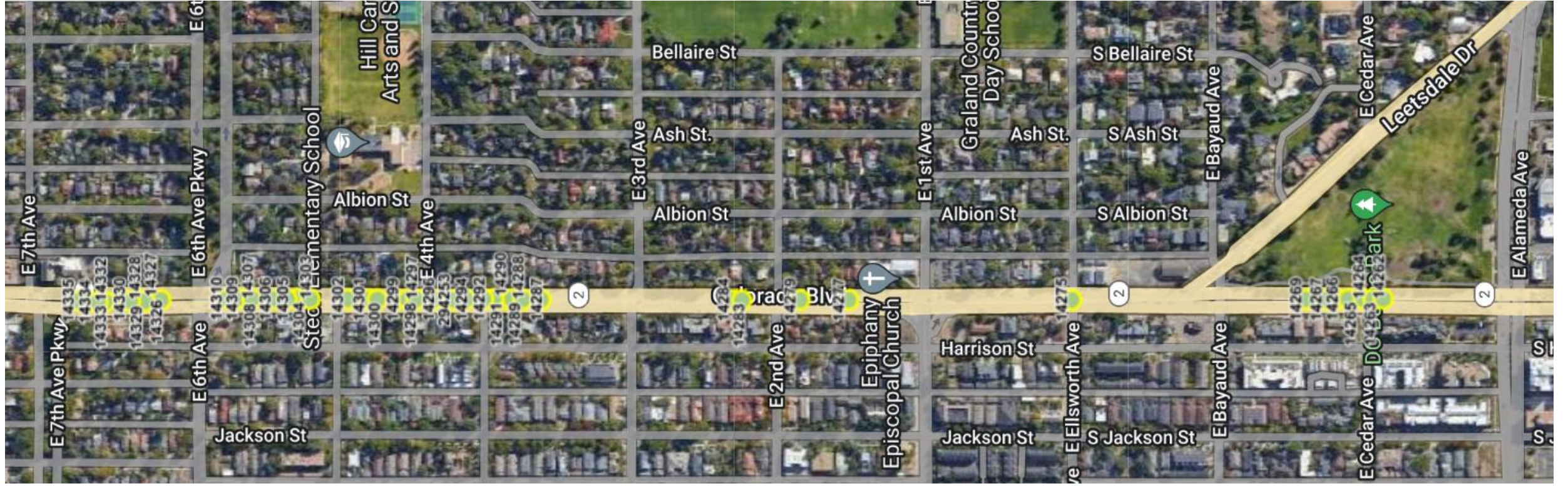
Colorado Blvd - E 16th Ave to E 30th Ave (16 trees)

Site ID	Address Street	Species	Size Class
14418	1600 N COLORADO BLVD	Oak, Bur (<i>Quercus macrocarpa</i>)	6 to 12
14419	1600 N COLORADO BLVD	Oak, English (<i>Quercus robur</i>)	12 to 18
14420	1600 N COLORADO BLVD	Oak, English (<i>Quercus robur</i>)	12 to 18
14432	1900 N COLORADO BLVD	Hackberry, Common (<i>Celtis occidentalis</i>)	18 to 24
14491	2300 N COLORADO BLVD	Ash, White (<i>Fraxinus americana</i>)	6 to 12
14493	2300 N COLORADO BLVD	Hackberry, Common (<i>Celtis occidentalis</i>)	6 to 12
14495	2300 N COLORADO BLVD	Ash, White (<i>Fraxinus americana</i>)	6 to 12
14497	2300 N COLORADO BLVD	Honeylocust (<i>Gleditsia triacanthos</i>)	6 to 12
14498	2300 N COLORADO BLVD	Honeylocust (<i>Gleditsia triacanthos</i>)	6 to 12
14499	2300 N COLORADO BLVD	Elm, American (<i>Ulmus americana</i>)	12 to 18
14502	2300 N COLORADO BLVD	Coffeetree, Kentucky (<i>Gymnocladus dioicus</i>)	6 to 12
14506	2900 N COLORADO BLVD	Honeylocust (<i>Gleditsia triacanthos</i>)	6 to 12
14507	2900 N COLORADO BLVD	Goldenrain Tree (<i>Koelreuteria paniculata</i>)	6 to 12
14508	2900 N COLORADO BLVD	Honeylocust (<i>Gleditsia triacanthos</i>)	12 to 18
14509	2900 N COLORADO BLVD	Coffeetree, Kentucky (<i>Gymnocladus dioicus</i>)	6 to 12
14510	2900 N COLORADO BLVD	Honeylocust (<i>Gleditsia triacanthos</i>)	12 to 18



Colorado Blvd- E 12th Ave to E 14th Ave (10 trees)

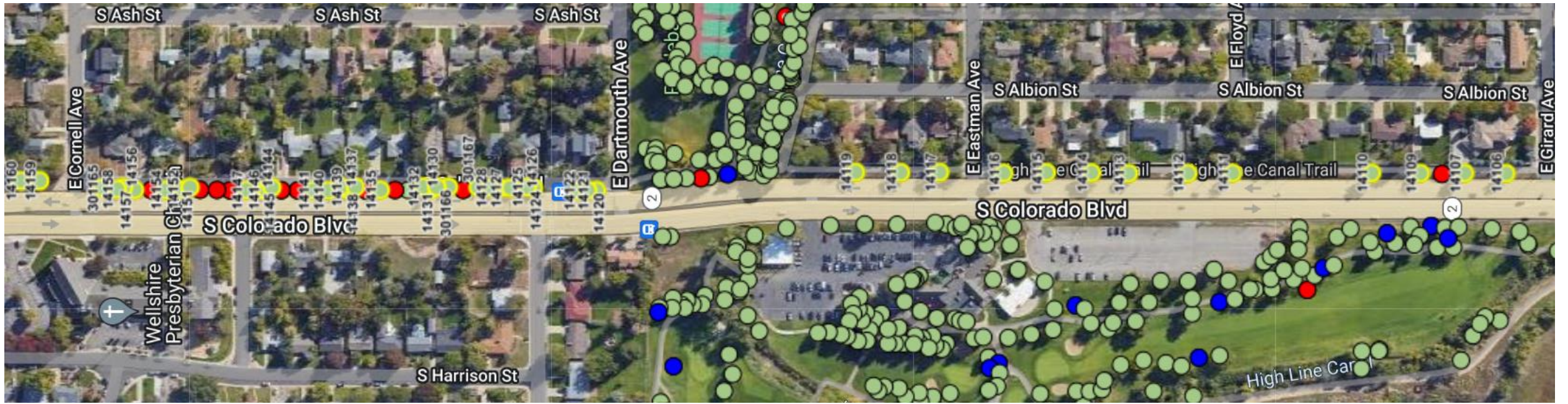
Site ID	Address Street	Species	Size Class
14393	1100 N COLORADO BLVD	Honeylocust (Gleditsia triacanthos)	6 to 12
14394	1300 N COLORADO BLVD	Honeylocust (Gleditsia triacanthos)	6 to 12
14397	1300 N COLORADO BLVD	Honeylocust (Gleditsia triacanthos)	12 to 18
14398	1300 N COLORADO BLVD	Honeylocust (Gleditsia triacanthos)	0 to 6
14399	1300 N COLORADO BLVD	Honeylocust (Gleditsia triacanthos)	12 to 18
14400	1300 N COLORADO BLVD	Honeylocust (Gleditsia triacanthos)	6 to 12
14401	1300 N COLORADO BLVD	Honeylocust (Gleditsia triacanthos)	6 to 12
14418	1600 N COLORADO BLVD	Oak, Bur (Quercus macrocarpa)	6 to 12
14419	1600 N COLORADO BLVD	Oak, English (Quercus robur)	12 to 18
14420	1600 N COLORADO BLVD	Oak, English (Quercus robur)	12 to 18



Colorado Blvd E Alameda Ave to E 7th Ave (44 trees)

Site ID	Address Street	Species	Size Class
14277	100 N COLORADO BLVD	Ash, White (<i>Fraxinus americana</i>)	6 to 12
14279	100 N COLORADO BLVD	Ash, White (<i>Fraxinus americana</i>)	6 to 12
14283	100 N COLORADO BLVD	Ash, White (<i>Fraxinus americana</i>)	6 to 12
14284	100 N COLORADO BLVD	Ash, White (<i>Fraxinus americana</i>)	6 to 12
14287	300 N COLORADO BLVD	Honeylocust (<i>Gleditsia triacanthos</i>)	12 to 18
14288	300 N COLORADO BLVD	Hackberry, Common (<i>Celtis occidentalis</i>)	6 to 12
14289	300 N COLORADO BLVD	Elm, American (<i>Ulmus americana</i>)	30 to 36
14290	300 N COLORADO BLVD	Hackberry, Common (<i>Celtis occidentalis</i>)	6 to 12
14291	300 N COLORADO BLVD	Hackberry, Common (<i>Celtis occidentalis</i>)	6 to 12
14292	300 N COLORADO BLVD	Hackberry, Common (<i>Celtis occidentalis</i>)	6 to 12
14294	300 N COLORADO BLVD	Hackberry, Common (<i>Celtis occidentalis</i>)	6 to 12
14296	300 N COLORADO BLVD	Ash, Green (<i>Fraxinus pennsylvanica</i>)	6 to 12
14297	300 N COLORADO BLVD	Hackberry, Common (<i>Celtis occidentalis</i>)	6 to 12
14298	300 N COLORADO BLVD	Ash, White (<i>Fraxinus americana</i>)	6 to 12
14299	300 N COLORADO BLVD	Honeylocust (<i>Gleditsia triacanthos</i>)	12 to 18
14300	300 N COLORADO BLVD	Hackberry, Common (<i>Celtis occidentalis</i>)	6 to 12
14301	300 N COLORADO BLVD	Hackberry, Common (<i>Celtis occidentalis</i>)	6 to 12
14302	300 N COLORADO BLVD	Honeylocust (<i>Gleditsia triacanthos</i>)	12 to 18
14303	300 N COLORADO BLVD	Elm, American (<i>Ulmus americana</i>)	30 to 36
14304	300 N COLORADO BLVD	Hackberry, Common (<i>Celtis occidentalis</i>)	6 to 12
14305	300 N COLORADO BLVD	Hackberry, Common (<i>Celtis occidentalis</i>)	12 to 18
14306	300 N COLORADO BLVD	Hackberry, Common (<i>Celtis occidentalis</i>)	6 to 12
14307	300 N COLORADO BLVD	Hackberry, Common (<i>Celtis occidentalis</i>)	12 to 18
14308	300 N COLORADO BLVD	Hackberry, Common (<i>Celtis occidentalis</i>)	6 to 12
14309	300 N COLORADO BLVD	Hackberry, Common (<i>Celtis occidentalis</i>)	6 to 12
14310	300 N COLORADO BLVD	Hackberry, Common (<i>Celtis occidentalis</i>)	12 to 18
294253	300 N COLORADO BLVD	Hackberry, Common (<i>Celtis occidentalis</i>)	6 to 12
14326	600 N COLORADO BLVD	Oak, Northern Red (<i>Quercus rubra</i>)	6 to 12
14327	600 N COLORADO BLVD	Juniper, Rocky Mountain (<i>Juniperus scopulorum</i>)	6 to 12

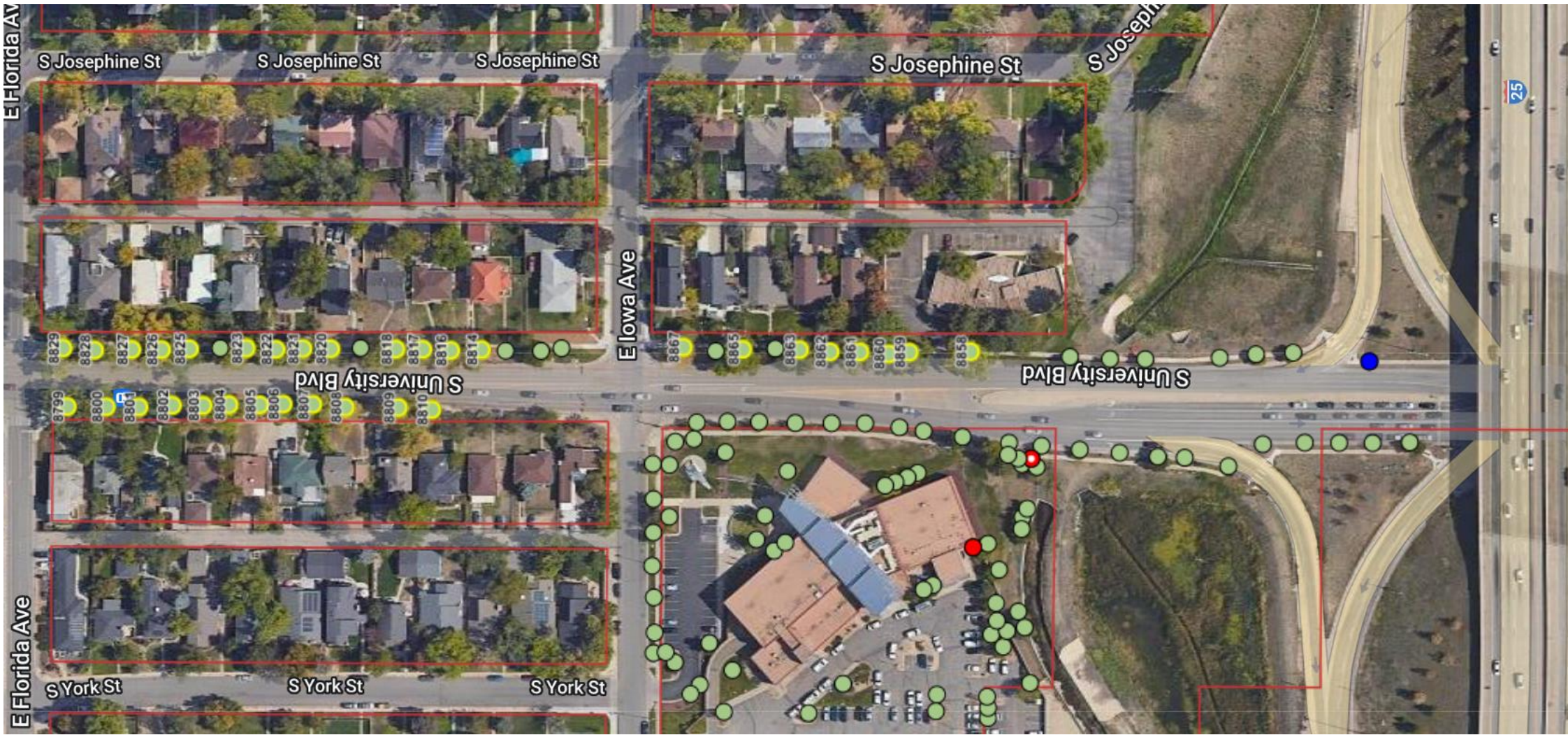
14328	600 N COLORADO BLVD	Crabapple, Flowering (<i>Malus sylvestris</i>)	6 to 12
14329	600 N COLORADO BLVD	Hackberry, Common (<i>Celtis occidentalis</i>)	18 to 24
14330	600 N COLORADO BLVD	Hackberry, Common (<i>Celtis occidentalis</i>)	18 to 24
14332	600 N COLORADO BLVD	Crabapple, Flowering (<i>Malus sylvestris</i>)	6 to 12
14333	600 N COLORADO BLVD	Crabapple, Flowering (<i>Malus sylvestris</i>)	6 to 12
14334	600 N COLORADO BLVD	Ash, Green (<i>Fraxinus pennsylvanica</i>)	12 to 18
14335	600 N COLORADO BLVD	Ash, Green (<i>Fraxinus pennsylvanica</i>)	24 to 30
14275	10 S COLORADO BLVD	Ash, Green (<i>Fraxinus pennsylvanica</i>)	6 to 12
14262	200 S COLORADO BLVD	Honeylocust (<i>Gleditsia triacanthos</i>)	12 to 18
14263	200 S COLORADO BLVD	Honeylocust (<i>Gleditsia triacanthos</i>)	12 to 18
14264	200 S COLORADO BLVD	Honeylocust (<i>Gleditsia triacanthos</i>)	12 to 18
14265	200 S COLORADO BLVD	Honeylocust (<i>Gleditsia triacanthos</i>)	0 to 6
14266	200 S COLORADO BLVD	Hackberry, Common (<i>Celtis occidentalis</i>)	6 to 12
14267	200 S COLORADO BLVD	Hackberry, Common (<i>Celtis occidentalis</i>)	6 to 12
14269	200 S COLORADO BLVD	Honeylocust (<i>Gleditsia triacanthos</i>)	6 to 12



Colorado Blvd - E Cornell to Hampden Ave (45 trees)

Site ID	Address Street	Species	Size Class
14159	2900 S COLORADO BLVD	Buckeye, Ohio (Aesculus glabra)	6 to 12
14160	2900 S COLORADO BLVD	Buckeye, Ohio (Aesculus glabra)	6 to 12
14120	3000 S COLORADO BLVD	Crabapple (Malus tschonoskii)	6 to 12
14121	3000 S COLORADO BLVD	Crabapple (Malus tschonoskii)	6 to 12
14122	3000 S COLORADO BLVD	Crabapple, Prairie or Bechtel (Malus ioensis)	0 to 6
14124	3000 S COLORADO BLVD	Crabapple (Malus tschonoskii)	6 to 12
14125	3000 S COLORADO BLVD	Crabapple (Malus tschonoskii)	6 to 12
14126	3000 S COLORADO BLVD	Crabapple (Malus tschonoskii)	6 to 12
14127	3000 S COLORADO BLVD	Crabapple, Flowering (Malus sylvestris)	0 to 6
14128	3000 S COLORADO BLVD	Crabapple, Spring Snow (Malus 'Spring Snow')	6 to 12
14130	3000 S COLORADO BLVD	Pear, Flowering (Pyrus calleryana)	6 to 12
14131	3000 S COLORADO BLVD	Pear, Flowering (Pyrus calleryana)	6 to 12
14132	3000 S COLORADO BLVD	Pear, Flowering (Pyrus calleryana)	6 to 12
14135	3000 S COLORADO BLVD	Linden, Littleleaf (Tilia cordata)	6 to 12
14137	3000 S COLORADO BLVD	Crabapple (Malus tschonoskii)	0 to 6
14138	3000 S COLORADO BLVD	Crabapple (Malus tschonoskii)	6 to 12
14139	3000 S COLORADO BLVD	Crabapple (Malus tschonoskii)	6 to 12
14140	3000 S COLORADO BLVD	Oak, Northern Red (Quercus rubra)	6 to 12
14141	3000 S COLORADO BLVD	Oak, Chinkapin (Quercus muehlenbergii)	0 to 6
14144	3000 S COLORADO BLVD	Pear, Flowering (Pyrus calleryana)	0 to 6
14145	3000 S COLORADO BLVD	Pear, Flowering (Pyrus calleryana)	0 to 6
14146	3000 S COLORADO BLVD	Pear, Flowering (Pyrus calleryana)	0 to 6
14147	3000 S COLORADO BLVD	Linden, Littleleaf (Tilia cordata)	6 to 12
14151	3000 S COLORADO BLVD	Crabapple (Malus tschonoskii)	0 to 6
14152	3000 S COLORADO BLVD	Crabapple (Malus tschonoskii)	6 to 12
14154	3000 S COLORADO BLVD	Goldenrain Tree (Koelreuteria paniculata)	0 to 6
14156	3000 S COLORADO BLVD	Pear, Flowering (Pyrus calleryana)	0 to 6
14157	3000 S COLORADO BLVD	Pear, Flowering (Pyrus calleryana)	6 to 12
14158	3000 S COLORADO BLVD	Pear, Flowering (Pyrus calleryana)	6 to 12
301165	3000 S COLORADO BLVD	Oak, Chinkapin (Quercus muehlenbergii)	0 to 6
301166	3000 S COLORADO BLVD	Oak, Chinkapin (Quercus muehlenbergii)	0 to 6
301167	3000 S COLORADO BLVD	Oak, Chinkapin (Quercus muehlenbergii)	0 to 6
14117	3100 S COLORADO BLVD	Honeylocust (Gleditsia triacanthos)	12 to 18
14118	3100 S COLORADO BLVD	Honeylocust (Gleditsia triacanthos)	18 to 24
14119	3100 S COLORADO BLVD	Honeylocust (Gleditsia triacanthos)	12 to 18
14106	3200 S COLORADO BLVD	Honeylocust (Gleditsia triacanthos)	12 to 18
14107	3200 S COLORADO BLVD	Honeylocust (Gleditsia triacanthos)	12 to 18
14109	3200 S COLORADO BLVD	Honeylocust (Gleditsia triacanthos)	12 to 18
14110	3200 S COLORADO BLVD	Honeylocust (Gleditsia triacanthos)	12 to 18
14111	3200 S COLORADO BLVD	Honeylocust (Gleditsia triacanthos)	12 to 18
14112	3200 S COLORADO BLVD	Honeylocust (Gleditsia triacanthos)	12 to 18
14113	3200 S COLORADO BLVD	Honeylocust (Gleditsia triacanthos)	12 to 18
14114	3200 S COLORADO BLVD	Honeylocust (Gleditsia triacanthos)	18 to 24
14115	3200 S COLORADO BLVD	Honeylocust (Gleditsia triacanthos)	12 to 18
14116	3200 S COLORADO BLVD	Honeylocust (Gleditsia triacanthos)	18 to 24

Area E:



E Florida Ave

S Josephine St

S Josephine St

S Josephine St

S Josephine St

S Josephine St

8829

8828

8827

8826

8825

8823

8822

8821

8820

8818

8817

8816

8814

8799

8800

8801

8802

8803

8804

8805

8806

8807

8808

8809

8810

Iowa Ave

8867

8865

8863

8862

8861

8860

8859

8858

S University Blvd

E Florida Ave

S York St

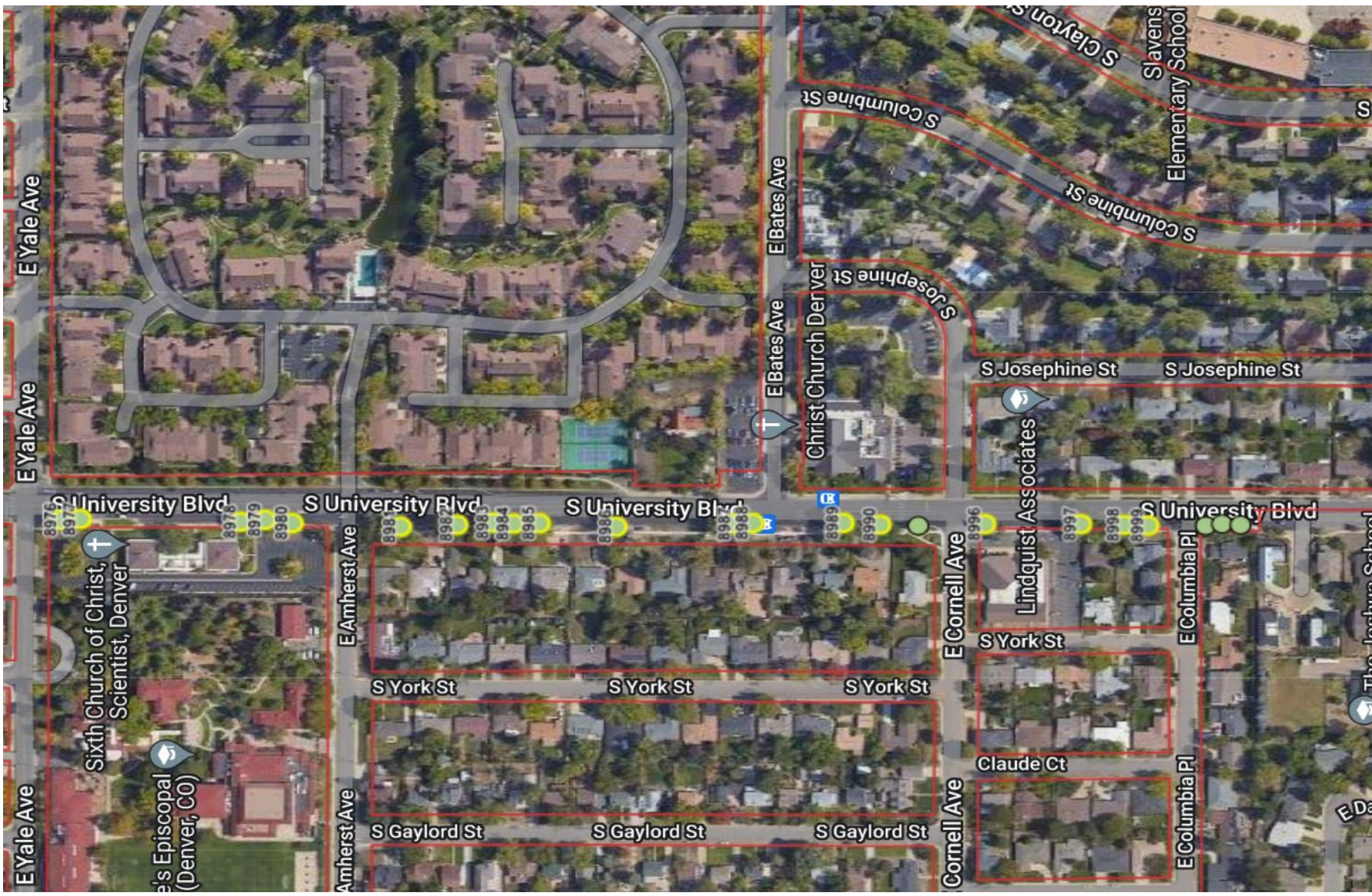
S York St

S York St

25

University Blvd - E Florida Ave to I-25 (33 trees)

Site ID	Address Street	Species	Size Class
8799	1501 S UNIVERSITY BLVD	Ash, Green (Fraxinus pennsylvanica)	30 to 36
8800	1505 S UNIVERSITY BLVD	Ash, Green (Fraxinus pennsylvanica)	30 to 36
8801	1505 S UNIVERSITY BLVD	Ash, Green (Fraxinus pennsylvanica)	30 to 36
8827	1510 S UNIVERSITY BLVD	Ash, Green (Fraxinus pennsylvanica)	18 to 24
8828	1510 S UNIVERSITY BLVD	Ash, Green (Fraxinus pennsylvanica)	18 to 24
8829	1510 S UNIVERSITY BLVD	Ash, Green (Fraxinus pennsylvanica)	24 to 30
8826	1520 S UNIVERSITY BLVD	Ash, Green (Fraxinus pennsylvanica)	18 to 24
8802	1521 S UNIVERSITY BLVD	Ash, Green (Fraxinus pennsylvanica)	30 to 36
8803	1529 S UNIVERSITY BLVD	Ash, Green (Fraxinus pennsylvanica)	24 to 30
8804	1529 S UNIVERSITY BLVD	Ash, Green (Fraxinus pennsylvanica)	24 to 30
8823	1530 S UNIVERSITY BLVD	Ash, Green (Fraxinus pennsylvanica)	24 to 30
8825	1530 S UNIVERSITY BLVD	Ash, Green (Fraxinus pennsylvanica)	24 to 30
8805	1535 S UNIVERSITY BLVD	Ash, Green (Fraxinus pennsylvanica)	24 to 30
8821	1538 S UNIVERSITY BLVD	Ash, Green (Fraxinus pennsylvanica)	18 to 24
8822	1538 S UNIVERSITY BLVD	Ash, Green (Fraxinus pennsylvanica)	24 to 30
8806	1543 S UNIVERSITY BLVD	Ash, Green (Fraxinus pennsylvanica)	18 to 24
8807	1543 S UNIVERSITY BLVD	Ash, Green (Fraxinus pennsylvanica)	30 to 36
8820	1546 S UNIVERSITY BLVD	Ash, Green (Fraxinus pennsylvanica)	24 to 30
8818	1550 S UNIVERSITY BLVD	Ash, Green (Fraxinus pennsylvanica)	24 to 30
8808	1551 S UNIVERSITY BLVD	Ash, Green (Fraxinus pennsylvanica)	30 to 36
8809	1557 S UNIVERSITY BLVD	Ash, Green (Fraxinus pennsylvanica)	30 to 36
8816	1566 S UNIVERSITY BLVD	Ash, Green (Fraxinus pennsylvanica)	18 to 24
8817	1566 S UNIVERSITY BLVD	Ash, Green (Fraxinus pennsylvanica)	24 to 30
8810	1567 S UNIVERSITY BLVD	Ash, Green (Fraxinus pennsylvanica)	18 to 24
8814	1580 S UNIVERSITY BLVD	Ash, Green (Fraxinus pennsylvanica)	18 to 24
8867	1600 S UNIVERSITY BLVD	Ash, Green (Fraxinus pennsylvanica)	24 to 30
8865	1610 S UNIVERSITY BLVD	Ash, Green (Fraxinus pennsylvanica)	24 to 30
8862	1630 S UNIVERSITY BLVD	Ash, Green (Fraxinus pennsylvanica)	18 to 24
8863	1630 S UNIVERSITY BLVD	Ash, Green (Fraxinus pennsylvanica)	24 to 30
8861	1640 S UNIVERSITY BLVD	Ash, Green (Fraxinus pennsylvanica)	30 to 36
8858	1666 S UNIVERSITY BLVD	Ash, Green (Fraxinus pennsylvanica)	24 to 30
8859	1666 S UNIVERSITY BLVD	Ash, Green (Fraxinus pennsylvanica)	24 to 30
8860	1666 S UNIVERSITY BLVD	Ash, Green (Fraxinus pennsylvanica)	24 to 30



University Blvd - E Yale Ave to E Columbia Pl (19 trees)

Site ID	Address Street	Species	Size Class
8981	2348 E AMHERST AVE	Elm, American (<i>Ulmus americana</i>)	30 to 36
8976	2701 S UNIVERSITY BLVD	Honeylocust (<i>Gleditsia triacanthos</i>)	18 to 24
8977	2701 S UNIVERSITY BLVD	Honeylocust (<i>Gleditsia triacanthos</i>)	18 to 24
8978	2701 S UNIVERSITY BLVD	Honeylocust (<i>Gleditsia triacanthos</i>)	18 to 24
8979	2701 S UNIVERSITY BLVD	Honeylocust (<i>Gleditsia triacanthos</i>)	18 to 24
8980	2701 S UNIVERSITY BLVD	Honeylocust (<i>Gleditsia triacanthos</i>)	24 to 30
8982	2835 S UNIVERSITY BLVD	Elm, American (<i>Ulmus americana</i>)	30 to 36
8983	2835 S UNIVERSITY BLVD	Elm, American (<i>Ulmus americana</i>)	24 to 30
8984	2845 S UNIVERSITY BLVD	Elm, American (<i>Ulmus americana</i>)	30 to 36
8985	2855 S UNIVERSITY BLVD	Elm, American (<i>Ulmus americana</i>)	30 to 36
8986	2865 S UNIVERSITY BLVD	Elm, American (<i>Ulmus americana</i>)	24 to 30
8987	2899 S UNIVERSITY BLVD	Elm, American (<i>Ulmus americana</i>)	24 to 30
8988	2925 S UNIVERSITY BLVD	Elm, American (<i>Ulmus americana</i>)	24 to 30
8989	2965 S UNIVERSITY BLVD	Elm, American (<i>Ulmus americana</i>)	30 to 36
8990	2987 S UNIVERSITY BLVD	Elm, American (<i>Ulmus americana</i>)	24 to 30
8996	3021 S UNIVERSITY BLVD	Elm, American (<i>Ulmus americana</i>)	24 to 30
8997	3021 S UNIVERSITY BLVD	Elm, American (<i>Ulmus americana</i>)	36 to 42
8998	3041 S UNIVERSITY BLVD	Elm, American (<i>Ulmus americana</i>)	24 to 30
8999	3041 S UNIVERSITY BLVD	Elm, American (<i>Ulmus americana</i>)	24 to 30