

NO.	DESCRIPTION	DATE	BY

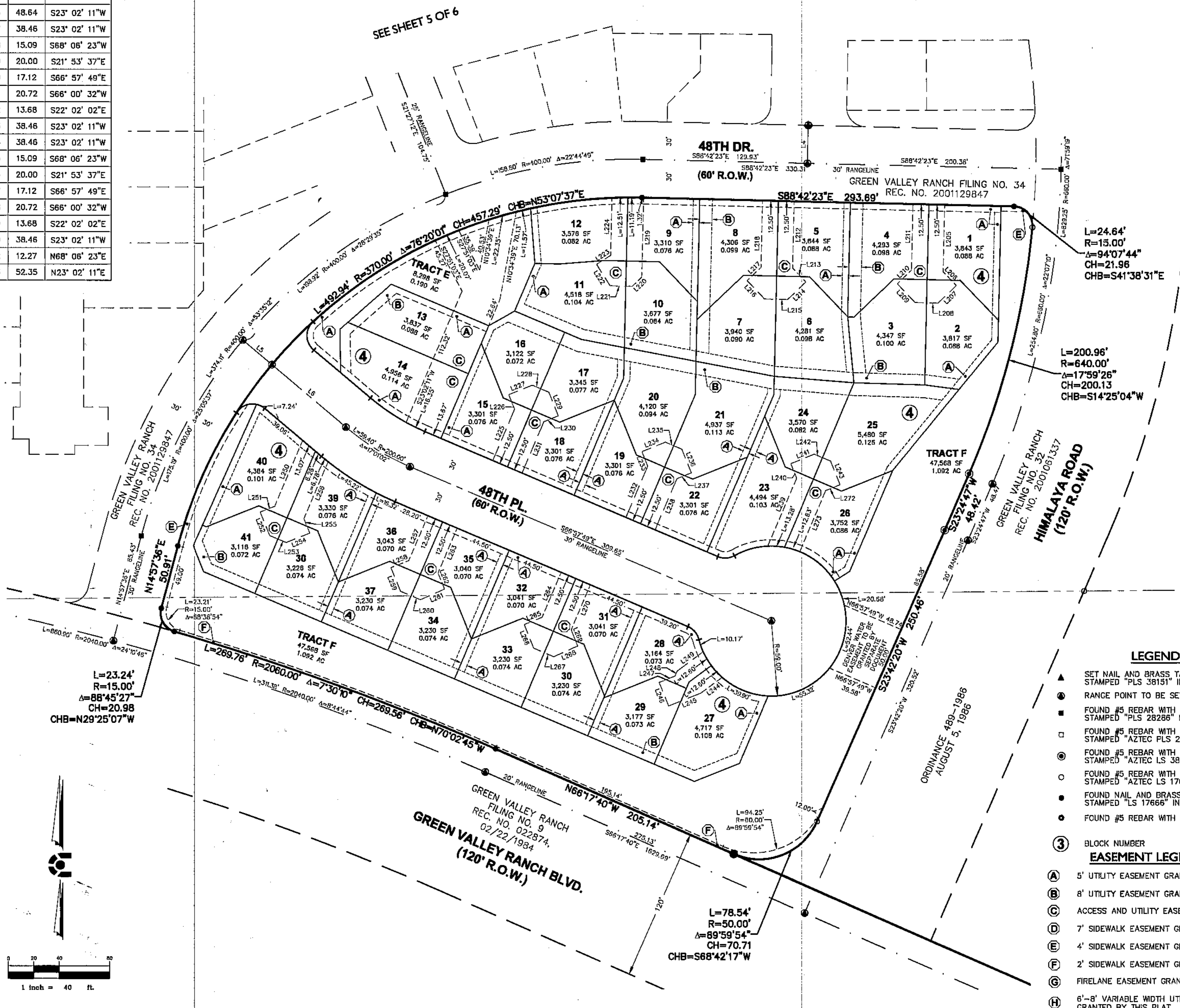
GREEN VALLEY RANCH FILING NO. 70

GREEN VALLEY RANCH FILING NO. 70

A PART OF THE SOUTHEAST QUARTER OF SECTION 15, AND THE NORTHEAST QUARTER OF SECTION 22,
TOWNSHIP 3 SOUTH, RANGE 66 WEST OF THE SIXTH PRINCIPAL MERIDIAN,
CITY AND COUNTY OF DENVER, STATE OF COLORADO

LINE #	LENGTH	DIRECTION
L254	20.00	S67° 57' 58" W
L255	12.27	S22° 02' 02" E
L256	48.64	S23° 02' 11" W
L257	38.46	S23° 02' 11" W
L258	15.09	S68° 06' 23" W
L259	20.00	S21° 53' 37" E
L260	17.12	S66° 57' 49" E
L261	20.72	S66° 00' 32" W
L262	13.68	S22° 02' 02" E
L263	38.46	S23° 02' 11" W
L264	38.46	S23° 02' 11" W
L265	15.09	S68° 06' 23" W
L266	20.00	S21° 53' 37" E
L267	17.12	S66° 57' 49" E
L268	20.72	S66° 00' 32" W
L269	13.68	S22° 02' 02" E
L270	38.46	S23° 02' 11" W
L272	12.27	N68° 06' 23" E
L273	52.35	N23° 02' 11" E

EASEMENT LINE TABLE			EASEMENT LINE TABLE		
LINE #	LENGTH	DIRECTION	LINE #	LENGTH	DIRECTION
L116	94.66	S41° 25' 28" W	L184	101.66	S41° 25' 28" W
L117	12.27	S86° 29' 41" W	L185	101.66	N41° 25' 28" E
L118	20.00	S3° 30' 19" E	L186	25.00	S48° 34' 31" E
L119	14.12	S48° 34' 32" E	L187	101.66	S41° 25' 28" W
L120	20.00	S86° 21' 15" W	L188	101.66	N41° 25' 28" E
L121	12.27	S3° 38' 45" E	L189	25.00	S48° 34' 31" E
L122	92.99	S41° 25' 28" W	L190	101.66	S41° 25' 28" W
L123	46.52	N48° 34' 32" W	L191	99.00	N41° 25' 28" E
L124	12.27	N3° 30' 18" W	L192	25.00	S48° 34' 31" E
L125	20.00	N86° 29' 42" E	L193	99.08	S41° 25' 28" W
L126	14.12	N41° 25' 28" E	L194	97.33	N56° 49' 56" E
L127	20.00	N3° 38' 44" W	L195	25.00	S33° 10' 04" E
L128	12.27	S86° 21' 16" W	L196	97.33	S56° 49' 56" W
L129	46.52	N48° 34' 32" W	L197	100.77	N72° 54' 58" E
L130	40.46	N48° 34' 32" W	L198	25.00	S17° 05' 01" E
L131	12.27	N3° 30' 18" W	L199	100.77	S72° 54' 58" W
L132	20.00	S86° 29' 42" W	L200	107.46	N89° 47' 46" E
L133	14.12	N41° 25' 28" E	L201	25.00	S0° 12' 14" E
L134	20.00	N3° 38' 44" W	L202	107.09	S89° 47' 46" W
L135	12.27	S86° 21' 16" W	L205	52.55	S1° 17' 37" W
L136	40.46	N48° 34' 32" W	L206	15.09	S43° 46' 38" E
L137	40.46	S41° 25' 28" W	L207	20.00	S46° 13' 22" W
L138	12.27	S86° 29' 41" W	L208	18.12	S88° 42' 23" E
L139	20.00	S3° 30' 19" E	L209	20.47	S43° 38' 12" E
L140	14.12	N48° 34' 32" W	L210	15.56	S46° 21' 48" W
L141	20.00	S86° 21' 15" W	L211	51.89	S1° 17' 37" W
L142	12.27	S3° 38' 45" E	L212	52.55	S1° 17' 37" W
L143	40.46	S41° 25' 28" W	L213	15.09	S43° 46' 38" E
L144	40.46	S41° 25' 28" W	L214	20.00	S46° 13' 22" W
L145	12.27	S86° 29' 41" W	L215	18.12	S88° 42' 23" E
L146	20.00	S3° 30' 19" E	L216	20.00	S43° 38' 12" E
L147	14.12	S48° 34' 32" E	L217	15.09	S46° 21' 48" W
L148	20.00	S86° 21' 15" W	L218	52.55	S1° 17' 37" W
L149	12.27	S3° 38' 45" E	L219	62.43	S1° 17' 37" W
L150	40.46	S41° 25' 28" W	L220	10.50	S46° 13' 22" W
L151	50.36	S52° 25' 52" W	L221	17.40	S88° 42' 23" E
L152	12.27	N82° 29' 56" W	L222	20.00	S32° 34' 11" E
L153	20.00	S7° 30' 04" W	L223	13.20	S57° 25' 49" W
L154	14.12	S37° 34' 08" E	L224	45.15	S1° 17' 37" W
L155	20.00	N82° 38' 21" W	L225	43.91	N23° 02' 11" E
L156	12.27	S7° 21' 39" W	L226	12.27	N22° 02' 01" W
L157	47.95	S52° 25' 52" W	L227	20.00	N67° 57' 59" E
L158	50.77	N89° 43' 07" W	L228	14.12	S66° 57' 49" E
L159	12.27	N44° 38' 54" W	L229	20.00	N21° 53' 36" W
L160	20.00	S45° 21' 06" W	L230	12.27	N68° 06' 24" E
L161	14.12	N0° 16' 53" E	L231	43.91	N23° 02' 11" E
L162	20.00	N44° 47' 20" W	L232	43.91	N23° 02' 11" E
L163	12.27	S45° 12' 40" W	L233	12.27	N22° 02' 01" W
L164	51.81	N89° 43' 07" W	L234	20.00	N67° 57' 59" E
L165	107.09	N14° 29' 50" W	L235	14.12	S66° 57' 49" E
L166	12.27	N30° 34' 23" E	L236	20.00	N21° 53' 36" W
L167	20.00	N59° 25' 37" W	L237	12.27	N68° 06' 24" E
L168	14.12	N75° 30' 10" E	L238	43.91	N23° 02' 11" E
L169	20.00	N30° 25' 57" E	L239	58.24	N23° 02' 11" E
L170	12.27	N59° 34' 03" W	L240	12.27	N22° 02' 02" W
L171	104.35	N14° 29' 50" W	L241	20.00	N67° 57' 58" E
L172	112.94	S48° 34' 32" E	L242	14.12	S66° 57' 49" E
L173	15.09	N86° 21' 15" E	L243	20.00	N21° 53' 37" W
L174	20.00	S3° 38' 45" E	L244	20.72	S53° 28' 10" W
L175	18.12	N41° 25' 28" E	L245	27.42	S68° 06' 23" W
L176	20.00	N86° 29' 41" E	L246	20.00	S21° 53' 37" E
L177	15.09	S3° 30' 19" E	L247	13.44	S68° 06' 23" W
L178	112.94	S48° 34' 32" E	L248	4.18	S23° 02' 11" W
L179	101.66	N41° 25' 28" E	L249	25.59	S53° 28' 10" W
L180	25.00	S48° 34' 31" E	L250	56.19	S23° 02' 11" W
L181	101.66	N41° 25' 28" E	L251	12.27	S68° 06' 23" W
L182	101.66	N41° 25' 28" E	L252	20.00	S21° 53' 37" E
L183	25.00	S48° 34' 31" E	L253	14.12	S66° 57' 49" E



LEGEND

- ▲ SET NAIL AND BRASS TAG STAMPED "PLS 38131" IN CONCRETE
- RANGE POINT TO BE SET AFTER CONSTRUCTION
- FOUND #5 REBAR WITH 2" ALUM. CAP STAMPED "PLS 28286" IN RANGEBOX
- FOUND #5 REBAR WITH ORANGE PLASTIC CAP STAMPED "AZTEC PLS 28286"
- FOUND #5 REBAR WITH ORANGE PLASTIC CAP STAMPED "AZTEC LS 38064"
- FOUND #5 REBAR WITH ORANGE PLASTIC CAP STAMPED "AZTEC LS 17666"
- FOUND NAIL AND BRASS TAG STAMPED "LS 17666" IN CONCRETE
- FOUND #5 REBAR WITH BROKEN ORANGE CAP

EASEMENT LEGEND

- ③ BLOCK NUMBER
- (A) 5' UTILITY EASEMENT GRANTED BY THIS PLAT
- (B) 6' UTILITY EASEMENT GRANTED BY THIS PLAT
- (C) ACCESS AND UTILITY EASEMENT GRANTED BY THIS PLAT
- (D) 7' SIDEWALK EASEMENT GRANTED BY THIS PLAT
- (E) 4' SIDEWALK EASEMENT GRANTED BY THIS PLAT
- (F) 2' SIDEWALK EASEMENT GRANTED BY THIS PLAT
- (G) FIRELANE EASEMENT GRANTED BY THIS PLAT
- (H) 6'-8' VARIABLE WIDTH UTILITY EASEMENT GRANTED BY THIS PLAT

GREEN VALLEY RANCH FILING NO. 70