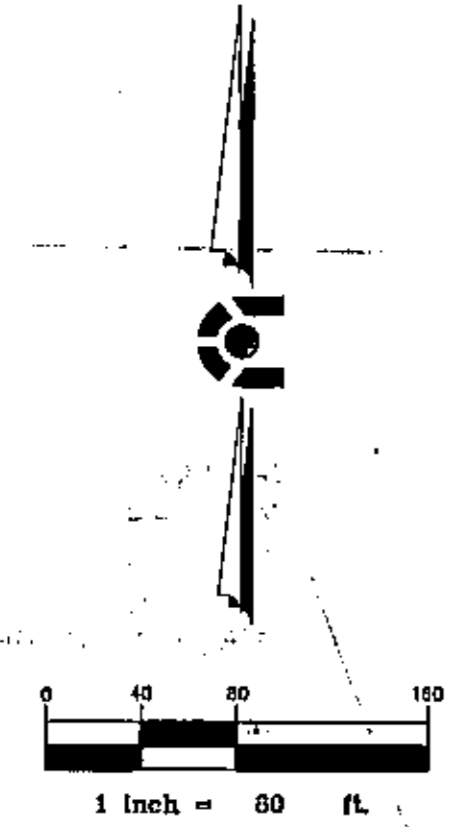


**GREEN VALLEY RANCH FILING NO. 70**  
 A PART OF THE SOUTHEAST QUARTER OF SECTION 15 AND THE NORTHEAST QUARTER OF SECTION 22,  
 TOWNSHIP 3 SOUTH, RANGE 66 WEST OF THE SIXTH PRINCIPAL MERIDIAN,  
 CITY AND COUNTY OF DENVER, STATE OF COLORADO



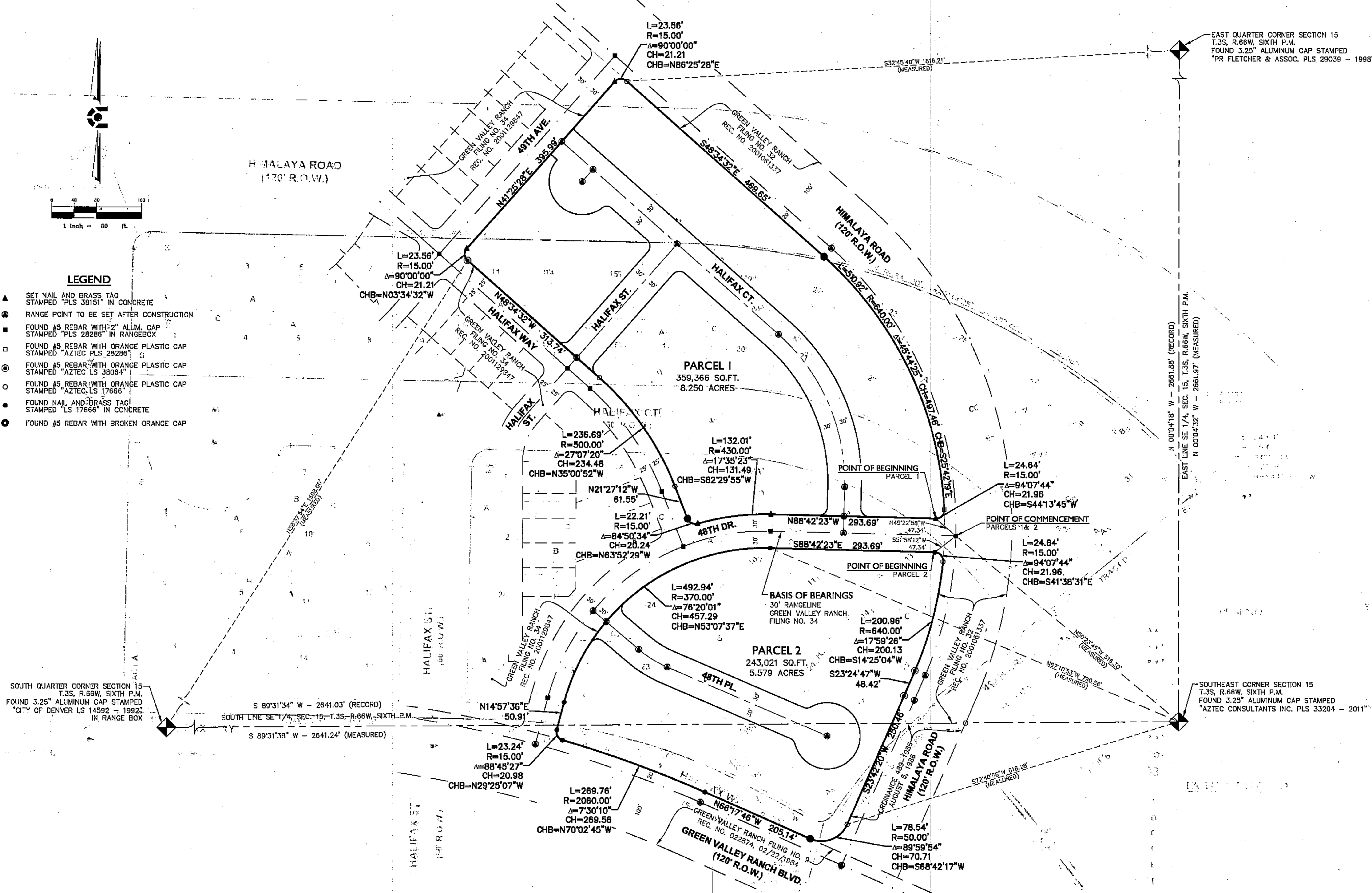
**LEGEND**

- ▲ SET NAIL AND BRASS TAG STAMPED "PLS 38151" IN CONCRETE
- RANGE POINT TO BE SET AFTER CONSTRUCTION
- FOUND #5 REBAR WITH 2" ALUM. CAP STAMPED "PLS 28286" IN RANGEBOX
- FOUND #5 REBAR WITH ORANGE PLASTIC CAP STAMPED "AZTEC PLS 28286"
- ⊙ FOUND #5 REBAR WITH ORANGE PLASTIC CAP STAMPED "AZTEC LS 38084"
- FOUND #5 REBAR WITH ORANGE PLASTIC CAP STAMPED "AZTEC LS 17666"
- FOUND NAIL AND BRASS TAG STAMPED "LS 17666" IN CONCRETE
- FOUND #5 REBAR WITH BROKEN ORANGE CAP

SOUTH QUARTER CORNER SECTION 15  
 T.3S, R.66W, SIXTH P.M.  
 FOUND 3.25" ALUMINUM CAP STAMPED  
 "CITY OF DENVER LS 14592 - 1992"  
 IN RANGE BOX

EAST QUARTER CORNER SECTION 15  
 T.3S, R.66W, SIXTH P.M.  
 FOUND 3.25" ALUMINUM CAP STAMPED  
 "PR FLETCHER & ASSOC. PLS 29039 - 1998"

SOUTHEAST CORNER SECTION 15  
 T.3S, R.66W, SIXTH P.M.  
 FOUND 3.25" ALUMINUM CAP STAMPED  
 "AZTEC CONSULTANTS INC. PLS 33204 - 2011"



CIVIL ENGINEERING  
 DEVELOPMENT CONSULTING  
 LAND SURVEYING  
 1950 W. Iddleton Blvd., Ste. 109  
 Littleton, CO 80120



NO.	DESCRIPTION	DATE	BY

**GREEN VALLEY RANCH FILING NO. 70**

INITIAL PLAN  
 RELEASE: 3/30/15  
 DESIGNED BY: BF  
 DRAWN BY: JCA  
 CHECKED BY: TMG

JOB NO.  
 14-040

SHEET  
 2 OF 6