

Game Plan for a Healthy City

Land Use, Transportation and Infrastructure Committee

April 30, 2019



Denverright.
Your Voice. Our Future.

 **DENVER**
PARKS & RECREATION

Denverright.
Your Voice. Our Future.

 **DENVER**
THE MILE HIGH CITY

Parks & Recreation
Fun Activities in Beautiful Surroundings



Transit
Creating an Easily Traversable City



Land Use & Transportation
Neighborhood Character and Quality of Life



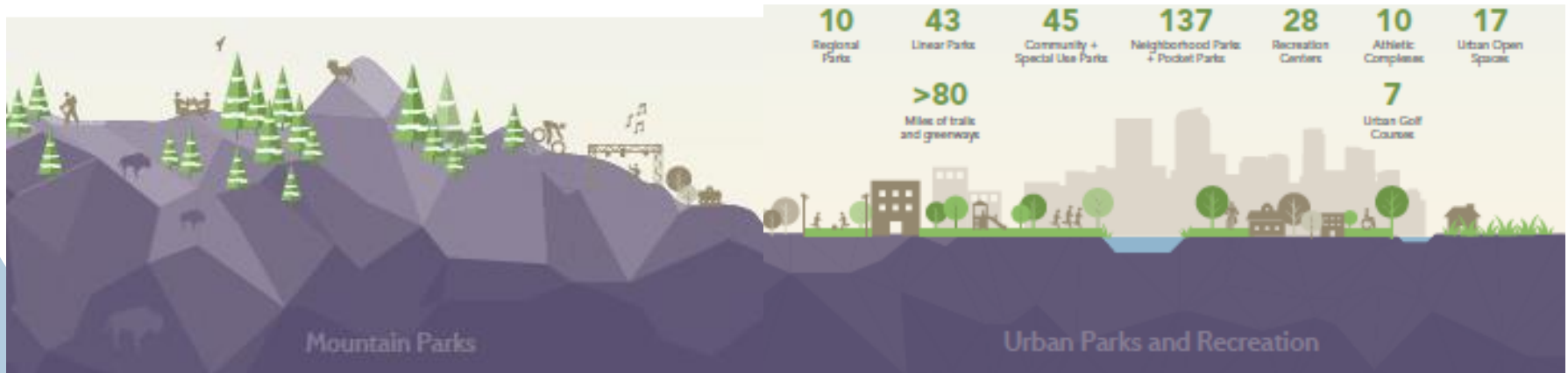
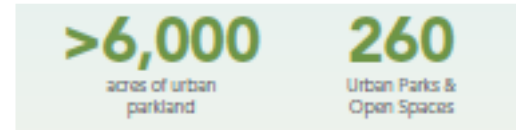
Pedestrians & Trails
Connecting People and Neighborhoods



Denveright.
Comprehensive Plan 2040

A diverse system

..... spanning from the mountains to the plains



Game Plan Outreach

- On-Line Surveys (3)
- Statistically-Valid Mail-in Survey (817 responses)
- Public Forums (11 meetings city-wide)
- Staff Focus Groups and Workshops (27)
- Community / All Employee Events (13)
- Stakeholder Task Force Meetings (7)
- All Denveright Meetings & Events (20,000+ touches)

Total Game Plan Engagement :
5,900+ Citizens
1,200 + Employees



What We Heard from Our Neighbors, Colleagues and Stakeholders

capture and reuse of water

stormwater as a park amenity

conservation of water and energy in all design and maintenance practices...

water quality

preserving/protecting habitat

enhancing the city's urban forest

parks as part of the flood solution

tree species diversity

multi-benefit solutions

green infrastructure

native/natural areas

stewardship

native and drought-tolerant species

outdoor/environmental education

city beautiful transform to city functional

Need strong brand and tagline...

sculpture + art gardens

Extend the concept of place to parks

more culture and arts programming!

KNOW you're in Denver

signature elements in parks

celebrate the system's historic traits, like parkways

our outdoor lifestyle

proud to say mountain parks are our backyard

sense of community - unique parks/centers for unique neighborhoods

innovative, diverse programming

must address density and growth relative to new parks

creative use of rights-of-way

community engagement

great routes to parks and rec centers

equity

physical access AND programming access

don't lose sense of diversity by saying "all"

training and development for staff

safety comes from getting people to the parks

health and well-being

eliminate silos, work between departments on common goals

partnerships are critical

address aging infrastructure

efficiency

planting and building with low maintenance burden in mind

strengthen foundations and foster friends-of organizations...

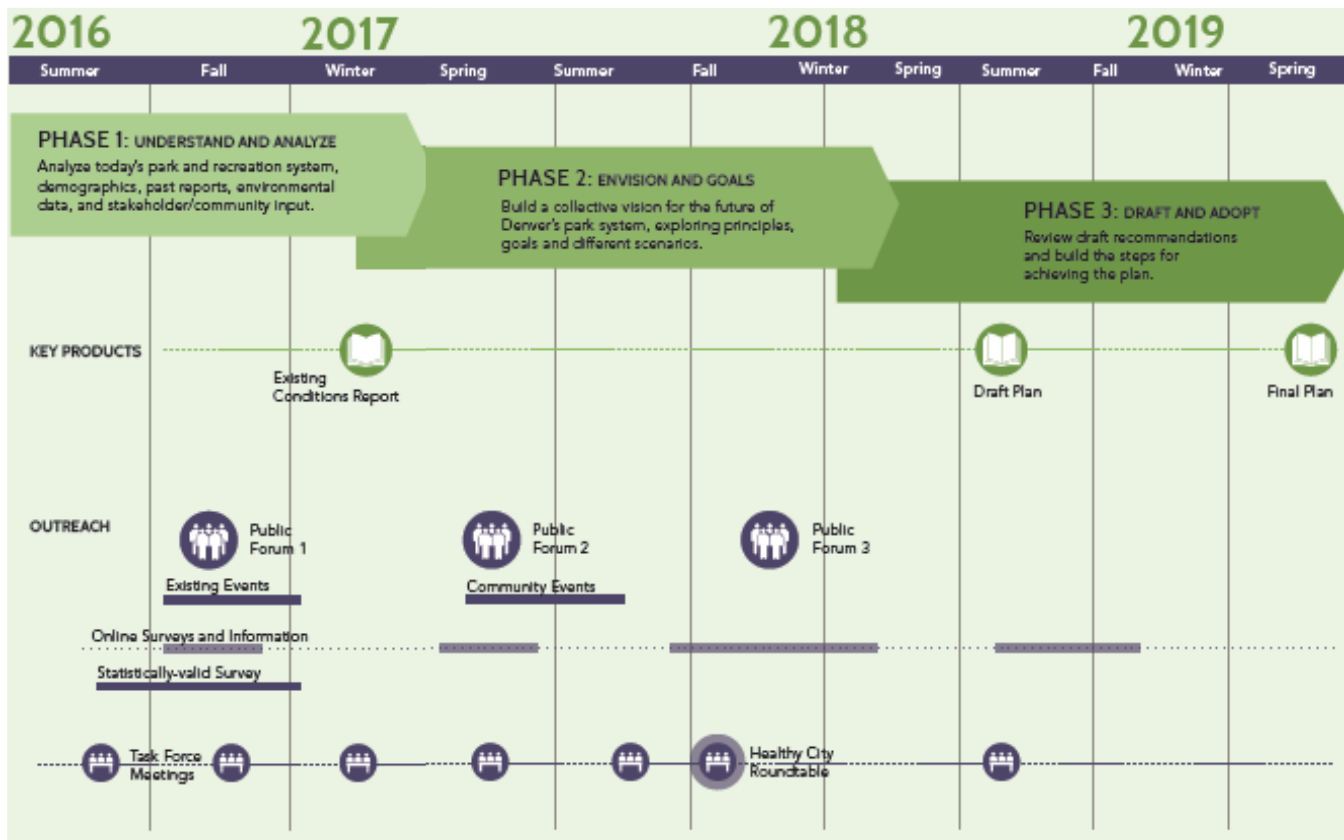
customer service

use data to help set priorities

market our services in a modern way -- social media

dedicated funding stream

Game Plan Process



What is a Healthy City?



A Place Where Residents Are Active and Healthy



A Place With a High Quality of Life



A Place Where All Ages Have Outdoor Opportunities



A Place With a Clean and Sustaining Urban Environment

Denver Comprehensive Plan 2040 Vision Elements



DENVERIGHT VISION ELEMENTS

EQUITABLE, AFFORDABLE
AND INCLUSIVE

STRONG AND AUTHENTIC
NEIGHBORHOODS

WELL-CONNECTED, SAFE
AND ACCESSIBLE PLACES

ECONOMICALLY DIVERSE
AND VIBRANT

ENVIRONMENTALLY
RESILIENT

HEALTHY AND ACTIVE

Parks and recreation spaces and facilities, along with streets, create the great common ground of our cities.



DENVERIGHT VISION ELEMENTS

EQUITABLE, AFFORDABLE
AND INCLUSIVE

STRONG AND AUTHENTIC
NEIGHBORHOODS

WELL-CONNECTED, SAFE
AND ACCESSIBLE PLACES

ECONOMICALLY DIVERSE
AND VIBRANT

ENVIRONMENTALLY
RESILIENT

HEALTHY AND ACTIVE

Parks and recreation facilities strengthen neighborhood identity; they are the places where a community's unique character is expressed and celebrated.



DENVERIGHT VISION ELEMENTS

EQUITABLE, AFFORDABLE
AND INCLUSIVE

STRONG AND AUTHENTIC
NEIGHBORHOODS

WELL-CONNECTED, SAFE
AND ACCESSIBLE PLACES

ECONOMICALLY DIVERSE
AND VIBRANT

ENVIRONMENTALLY
RESILIENT

HEALTHY AND ACTIVE



Tree-lined boulevards, streets, parkways and trails create beautiful, safe and green connections between parks, recreation centers and other community destinations.

MONACO BOULEVARD

DENVERIGHT VISION ELEMENTS

EQUITABLE, AFFORDABLE
AND INCLUSIVE

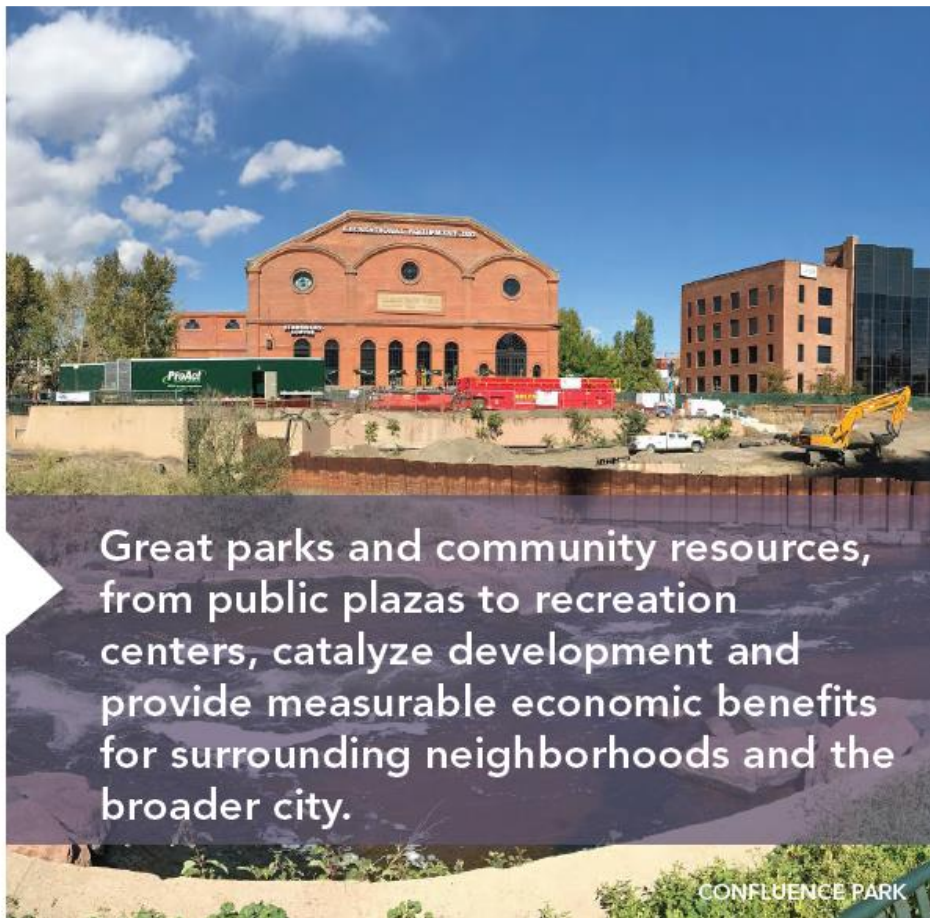
STRONG AND AUTHENTIC
NEIGHBORHOODS

WELL-CONNECTED, SAFE
AND ACCESSIBLE PLACES

ECONOMICALLY DIVERSE
AND VIBRANT

ENVIRONMENTALLY
RESILIENT

HEALTHY AND ACTIVE



Great parks and community resources, from public plazas to recreation centers, catalyze development and provide measurable economic benefits for surrounding neighborhoods and the broader city.

DENVERIGHT VISION ELEMENTS

EQUITABLE, AFFORDABLE
AND INCLUSIVE

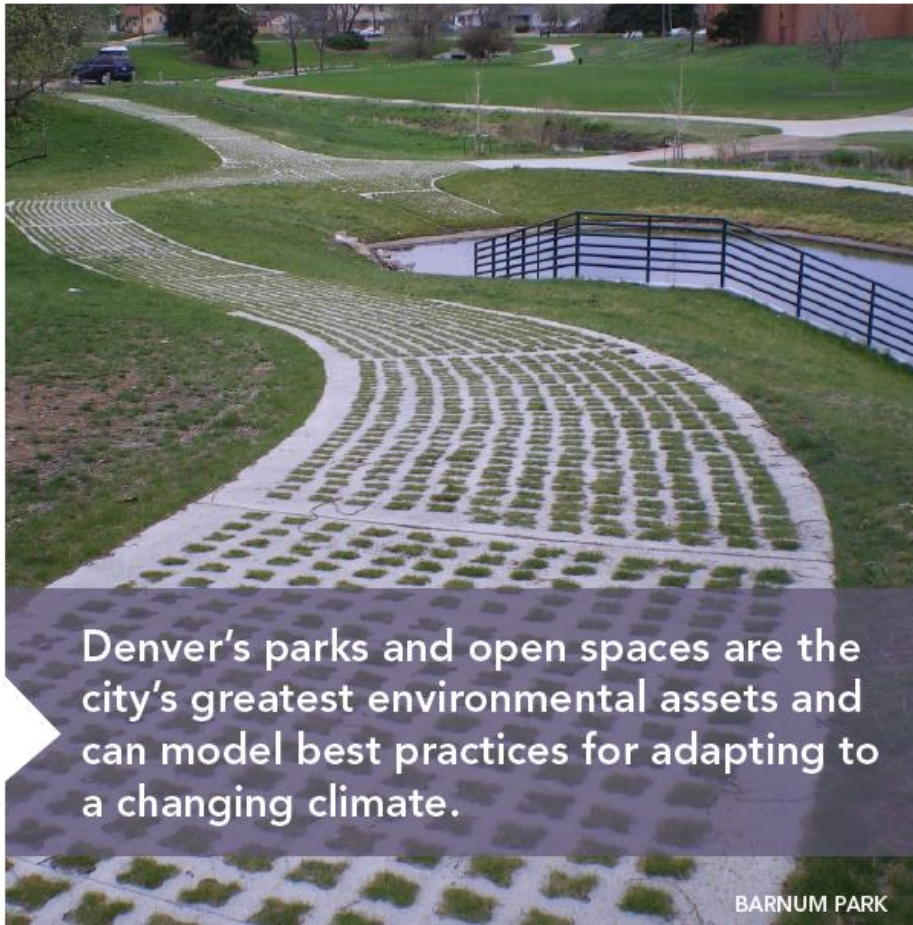
STRONG AND AUTHENTIC
NEIGHBORHOODS

WELL-CONNECTED, SAFE
AND ACCESSIBLE PLACES

ECONOMICALLY DIVERSE
AND VIBRANT

ENVIRONMENTALLY
RESILIENT

HEALTHY AND ACTIVE



DENVERIGHT VISION ELEMENTS

EQUITABLE, AFFORDABLE
AND INCLUSIVE

STRONG AND AUTHENTIC
NEIGHBORHOODS

WELL-CONNECTED, SAFE
AND ACCESSIBLE PLACES

ECONOMICALLY DIVERSE
AND VIBRANT

ENVIRONMENTALLY
RESILIENT

HEALTHY AND ACTIVE



Parks, trails and recreation centers are fundamental to quality of life, providing Denverites with shared spaces to recharge and relax, stay fit, and connect with each other.

Overall Game Plan Structure

The VISION
describes our desired future

Vision Statement

A Healthy City

4 Guiding Principles



20 Plan Goals

IMPLEMENTATION
is the roadmap to bring that vision to life

5 Pillars

Adapt - Diversify - Grow - Reinvest - Connect

Strategies

Actions &
Recommendations

Implementation Highlights...

Policies – An Institutional Commitment that Reflects Values that Guide Future Decisions

Regulations – Rules that Define and Control Activities or Practices for Expressed Public Benefits or Protections

Strategies, Recommendations, Actions – How the Plan Goals will be Realized



ADAPT TO THE CHANGING CLIMATE & LIMITED RESOURCES



DIVERSIFY PARKS & RECREATION SERVICES



GROW THE PARK SYSTEM & RECREATION ACCESS



REINVEST IN DENVER'S PARKS & RECREATION RESOURCES & PEOPLE



CONNECT TO DENVER'S NATURE & CULTURE

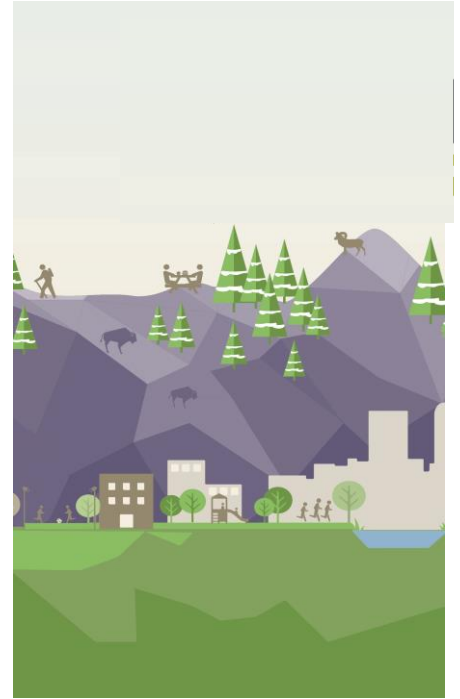
<p>1.2 RESILIENT LANDSCAPES Create select park areas to incorporate climate resilient landscape and drought tolerance.</p>	<p>1.5 ECOSYSTEM RESTORATION Restore functional ecosystems emphasizing healthy waterways and lakes.</p>	<p>1.6 URBAN FOREST EXPANSION Protect and expand tree cover in areas of high urban heat.</p>	<p>1.8 RIGHT-OF-WAY TREES Redefine municipal roles and responsibilities for the establishment, care and replacement of trees in the ROW.</p>	<p>1.12 MOUNTAIN PARK FIRE MANAGEMENT Work with regional partners to research and develop best practices for Mountain Park forest management and fire mitigation.</p>
<p>1.13 ENERGY EFFICIENT FACILITIES Make facilities more energy-saving and efficient, reducing energy use in park and recreation operations by 25 percent in 10 years.</p>	<p>1.15 WASTE REDUCTION & RECYCLING Address waste more efficiently, increase user responsibilities, and expand recycling in parks and recreation facilities.</p>	<p>2.2 RECREATION PROGRAMMING Adapt recreation facilities and programming to promote active lifestyles consistent with the culture of the surrounding community.</p>	<p>2.3 EMERGING TRENDS Actively research, test, and implement new park facilities and programs to respond to emerging trends.</p>	<p>2.7 ENGAGEMENT Develop Departmental capabilities to deepen community and employee outreach and engagement to better understand perspectives and needs.</p>
<p>3.1 GROW PARKS Acquire land and build facilities to keep pace with growth and meet 10-minute walk standard and service goals.</p>	<p>3.2 EXPAND PARTNERSHIPS Partner with residents, the private sector and non-profit organizations to support facility and program expansion.</p>	<p>3.5 10 MIN WALK ACCESS Ensure a ten minute walk for park and open space for every neighborhood.</p>	<p>3.6 MULTI-MODAL ACCESS With partners, improve multi-modal transportation systems and pathways in neighborhoods with barriers or safety issues.</p>	<p>4.1 EQUITABLE ACCESS Identify and implement strategies to achieve level-of-service targets for facilities and programming to ensure equity.</p>
<p>4.3 ALTERNATIVE FUNDING Explore alternative funding strategies to address unmet standards and expand and enhance Department services.</p>	<p>4.7 STAFF GROWTH & DEVELOPMENT Support and invest in staff development and professional growth to support engagement and retention.</p>	<p>4.9 UPGRADE FACILITIES Upgrade operation and user facilities to meet baseline standards.</p>	<p>4.12 PARTNERSHIP WITH DPS Develop a citywide mutually beneficial relationship with DPS to share resources.</p>	<p>4.16 DEVELOPMENT SUPPORT Work with other City agencies to seek increased participation from new development to improve park and recreation opportunities for new residents.</p>
<p>5.3 TREE-LINED STREETS Expand a system of tree-lined streets to improve mobility, tree canopy, and water quality.</p>	<p>5.8 PARKS ACTIVATION Collaborate with agencies and organizations to activate parks and support art, cultural, and social community events.</p>	<p>5.9: INNOVATIVE PUBLIC SPACES Expand new innovative park and recreation amenities to encourage active lifestyles and improve health.</p>	<p>5.12 NATURE IN THE CITY Create nature experiences and access to natural areas in every community.</p>	<p>5.13 MOUNTAIN PARK ACCESS Expand access, amenities, programs, and ease of use to improve the experience of the mountain parks to encourage more use by Denver residents.</p>



Adapt to the Changing Climate

Key Recommendations

- Implement Drought Plans and Convert an Additional 10% of Select Park Landscapes to **Lower Water-Consumptive Plant Communities**
- Expand **Natural Habitat** along Waterways and Lakes and Help Meet All State and Federal **Water Quality** Requirements
- Increase **City-Planted and Maintained Trees** in Parks and Public Street Right-of-Way by 20%
- Expand **Recycling, Reuse and Composting** Programs to reduce Landfill disposal by 35%
- Complete Mountain Park **Forest Management Plans** and work with Agencies and Land Owners to Address **Fire Mitigation**

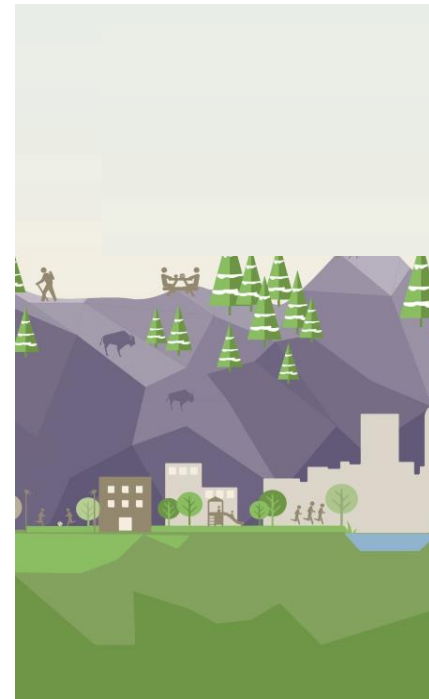




Diversify Parks and Recreation Services and Programs

Key Recommendations

- Create Neighborhood Engagement Plans for Every Recreation Center to Improve **Community Service and Responsiveness**
- Increase **Staff Diversity and Cultural Competencies** including Multilingual and Ethnic Programming
- Institute Staff **Customer Service Training** with Additional Tools for Surveying Users and Rewards for Excellent Customer Service
- Provide More **Outdoor Recreation, Arts, Cultural, and Healthy-Eating** programming
- Improve the **Quality of Recreational Programming and Facilities** to promote Higher Rates of Participation and Health Outcomes

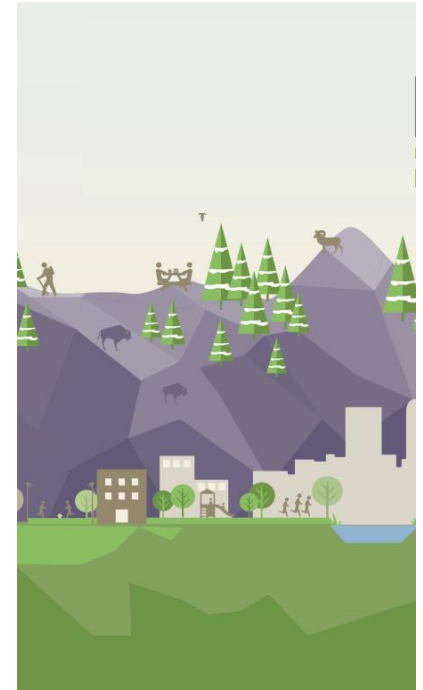




Grow Parks and Recreation Access

Key Recommendations

- Develop a **Land Acquisition Plan and Sustained Acquisition Funding** to keep pace with growth and meet service goals
- Set **Citywide Proximity Standards** from All Neighborhoods to Parks, Facilities, Services and Specialized Park Amenities
- Work with Public Works to **Provide Pedestrian and Park Access Improvements** to Meet the Citywide 10 Minute Walk Standard
- Identify **Mobility Options** with RTD, Rideshare Providers and Internal Services to Link High-Need Neighborhoods to Parks and Facilities
- Improve **Wayfinding and Other Guides** to Citywide Parks Facilities and Regional Amenities

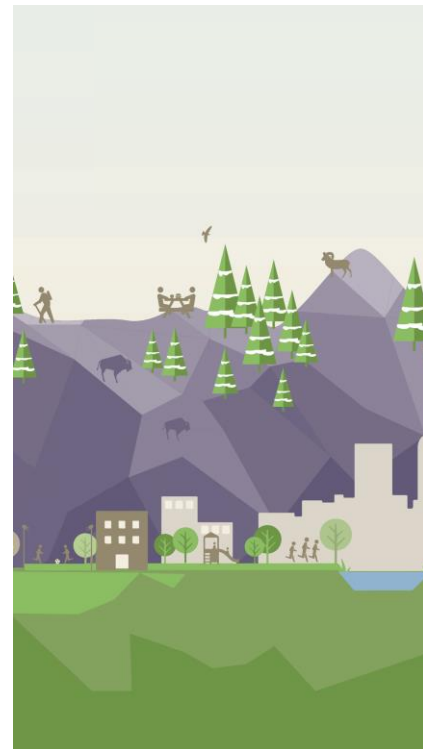




Re-invest in Denver's Parks and Recreation Resources and People

Key Recommendations

- Develop **Level-of-Service Standards** and Evaluate Service and Facility Gaps to Prioritize Underserved Neighborhoods.
- Invest in and Promote **Staff Development, Retention and Leadership Training**
- Upgrade **Operational and User Facilities** to Meet Baseline Standards and Provide **Updated Equipment** and Technical Support to Operational and Maintenance Staff
- Leverage **High-Impact Partnerships** with DPS, Corporations, Non-Profits and Developers to Add Parks, Facilities and Services

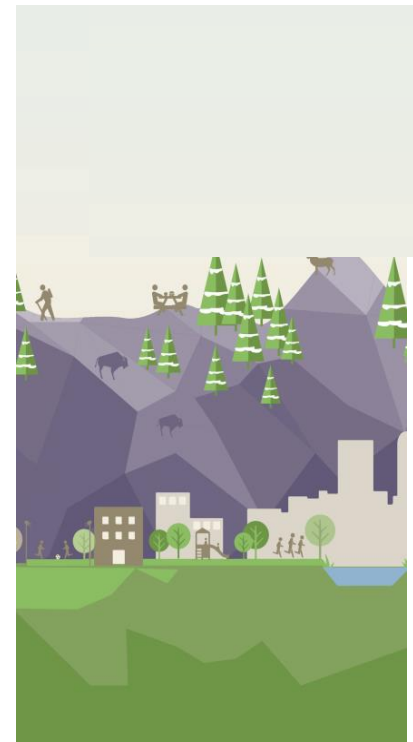




Connect to Denver's Nature and Culture

Key Recommendations

- Protect **Legacy Parkways** and Develop Plans for **More Tree-Lined Streets and Parkways** Throughout the City
- Commit to Significant **Investment in Downtown Parks**, Open Space, Trail Connections and Programming
- Develop a Thorough Inventory of all **Historic Park Landscapes, Buildings and Features** for Continued Use and Preservation
- Expand **Nature-Based Programs** in Parks and Recreation Centers and Access to Nature or Open Space in All Neighborhoods
- Expand **Access and Amenities** in the Mountain Parks



Comprehensive Plan 2040 Approval Criteria for Plan Supplements

1. Inclusive Community Process

Was an inclusive community process used to develop the plan?

2. Plan Consistency

Is the plan consistent with the vision, goals and strategies of Comprehensive Plan 2040?

3. Long-Term View

Does the plan demonstrate a long-term view?

Staff Recommendation:

Game Plan for a Healthy City should be Approved

with the condition that the document be edited for clarity and correctness before final adoption



2019 Schedule – Game Plan for a Healthy City

- Public Review Draft #2 – January 7
- Planning Board Info Item – March 6
- Public Review Draft #3– April 3
- Planning Board Hearing – April 17
- Parks & Rec Advisory Board – April 24
- **City Council LUTI Committee – April 30**
- Council 1st Reading – May 13
- **Council Hearing – May 20**



Game Plan for a Healthy City

