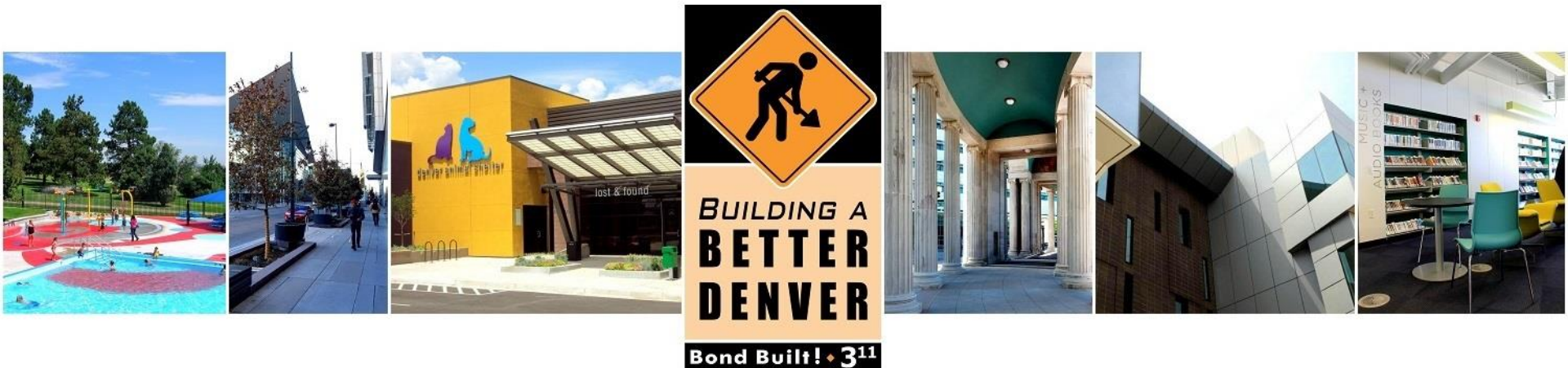


Better Denver Bond Program LUTI Committee

Proposed Changes to Funding and Assignment Agreement With the Denver Center for Performing Arts (DCPA)

June 13, 2017





Funding and Assignment Agreement - Amendment Denver Center for the Performing Arts (DCPA)

- Original Funding and Assignment Agreement in 2013 included proposed improvements to three venues in the Bonfils Complex:
 - Seawell Ballroom (Complete)
 - Stage Theater (Proposed Deletion)
 - Space Theater (Proposed Additional Scope and Funding)
- Original funding of \$9,932,000 proposed to be increased by \$1,000,000 to \$10,932,000.



Funding and Assignment Agreement - Amendment Denver Center for the Performing Arts (DCPA)

- Modifies the Scope and Funding
- Scope:
 - Adds - New Restrooms to reduce long waits and overcrowding in the original restrooms, and makes ADA accessible
 - Adds - ADA access to the Space Theater from the Lobby area
 - Deletes – work originally within the Stage Theatre. Following due diligence, funding was only sufficient to accomplish work in the Space Theater.
- Funding:
 - Increase agreement funding by \$1,000,000 to accommodate the new Restrooms and new ADA Accessibility



Additions to DCPA Bonfils Space Theatre

- New Restrooms
 - A Family/ Gender neutral restroom
 - 485 additional square feet of restroom space for a total of 1,768 SF
 - Increases number of restroom fixtures by over 50% (from 46 to 72)
 - All restrooms will be 100% ADA compliant
- Lobby Area and ADA Accessibility
 - ADA access has been added from the larger Lobby area into the Space Theater



Bonfils Complex - New Restrooms

Before



After

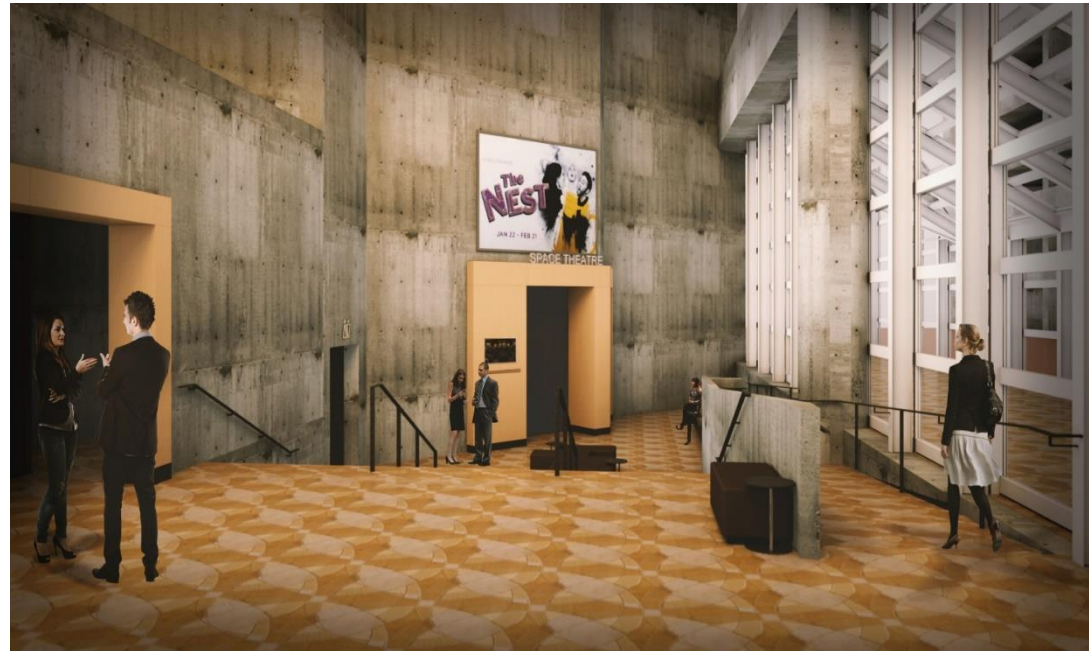


Bonfils Space Theater - Lobby ADA Addition

Before



After





**BUILDING A
BETTER
DENVER**

Bond Built • 3¹¹



Questions?

BONFILS THEATRE COMPLEX NEW RESTROOMS

PREVIOUS RESTROOM SQUARE FOOTAGE	
MEN- STAGE THEATRE	236sf
MEN- SPACE THEATRE	202sf
WOMEN- STAGE THEATRE	628sf
WOMEN-SPACE THEATRE	217sf
FAMILY USE- SPACE THEATRE	0sf
TOTAL	1,283sf

NEW RESTROOM SQUARE FOOTAGE	
MEN- STAGE THEATRE	273sf
MEN- SPACE TEHATRE	363sf
WOMEN- STAGE THEATRE	630sf
WOMEN-SPACE THEATRE	457sf
ASSISTED USE- SPACE THEATRE	45sf
TOTAL	1,768sf

PREVIOUS RESTROOM FIXTURE COUNT			
	WC	URINAL	LAV
MEN- STAGE THEATRE	3	4	6
MEN- SPACE THEATRE	2	2	4
WOMEN- STAGE THEATRE	11		8
WOMEN-SPACE THEATRE	3		3
FAMILY- SPACE THEATRE			
TOTAL	19	6	21

NEW RESTROOM FIXTURE COUNT			
	WC	URINAL	LAV
MEN- STAGE THEATRE	3	8	6
MEN- SPACE THEATRE	3	8	6
WOMEN- STAGE THEATRE	12		6
WOMEN-SPACE THEATRE	12		6
FAMILY- SPACE THEATRE	1		1
TOTAL	31	16	25

WC – water closet/bathroom stall