

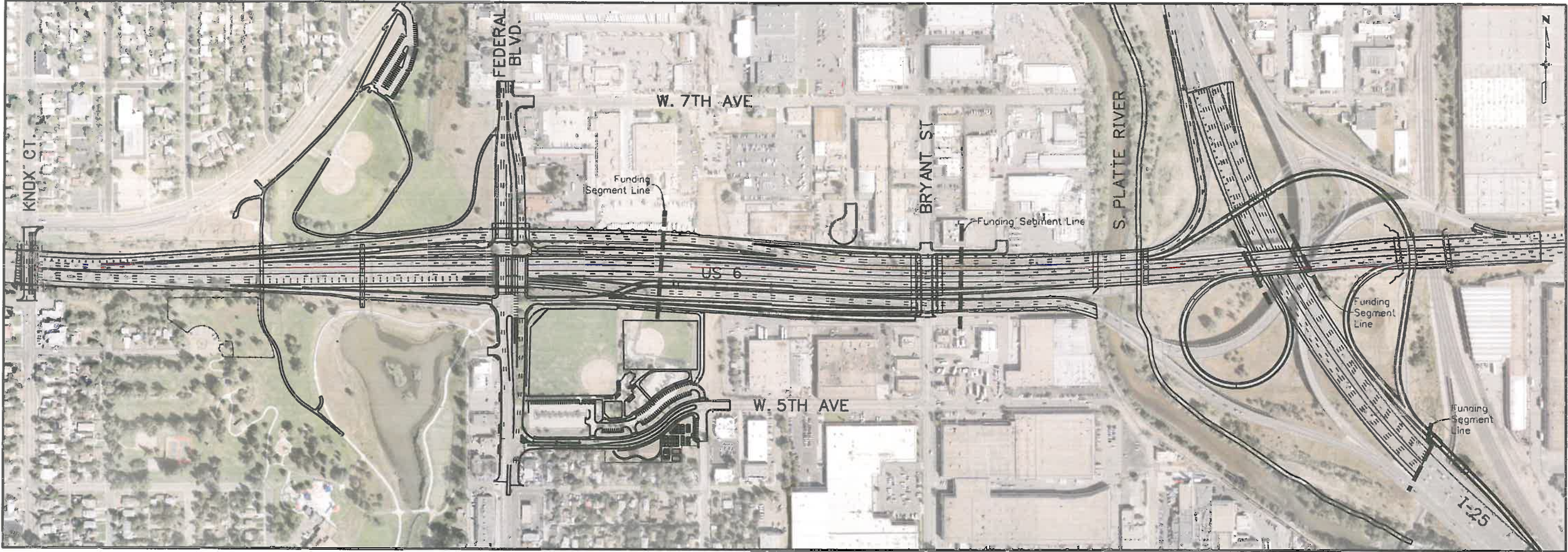
Soalier: 10/10/28 AM 1:12/2005-00\08 Propose\18838\Design\Drawings\18838\_FHU\_DES\_TitleSheet.dgn  
3/27/2013 C:\DOT\p\DOT\Quality\_V8\p\c\g C:\DOT-Pentable.tbl

Oversight / NHS	
FHWA REGION VIII OVERSIGHT?	<input type="checkbox"/> NO <input checked="" type="checkbox"/> YES
NATIONAL HIGHWAY SYSTEM?	<input type="checkbox"/> NO <input checked="" type="checkbox"/> YES

DEPARTMENT OF TRANSPORTATION  
STATE OF COLORADO

PRELIMINARY PLANS  
PROPOSAL - US 6 BRIDGES DESIGN BUILD PROJECT  
BR 0061-083, SUB ACCOUNT 18838 (CN)

Related Projects:	
P. E. UNDER PROJECT:	BR 0061-083
Project Number	18838
Project Code:	
R.O.W. Projects:	
Project Number	IM 088A-024 UNIT 2
Project Code:	STATE HWY NO. 88
	FEDERAL BLVD/US 6



PROJECT LOCATION MAP  
N.T.S.

SHEET NO.	INDEX OF SHEETS
1 2-46 47-50 51-78 79-110	TITLE SHEET BASIC CONFIGURATION PAVEMENT DEFINITION STRUCTURES CONSTRUCTION PHASING

Print Date: 3/27/2013	
File Name: 18838_FHU_DES_TitleSheet.dgn	
Horiz. Scale: 1:450	Vert. Scale: As Noted
Unit Information	Unit Leader Initials



Colorado Department of Transportation	
	8833 South Wadsworth Court Littleton, CO 80128 Phone: 303-972-9112 FAX: 303-972-9114
Region 6	MDP

NOT FOR CONSTRUCTION	
Date: 03-28-13	Revision No:

US 6 BRIDGES DESIGN BUILD TITLE SHEET	
Designer:	Structure
Detailer:	Numbers
Sheet Subset: TITLE	Subset Sheets: TT01 of 1

Project No./Code	
BR-0061-083	
18838	
Sheet Number	1



The US 6 design-build project will replace five bridges along the U.S. 6 corridor between I-25 and Knox.

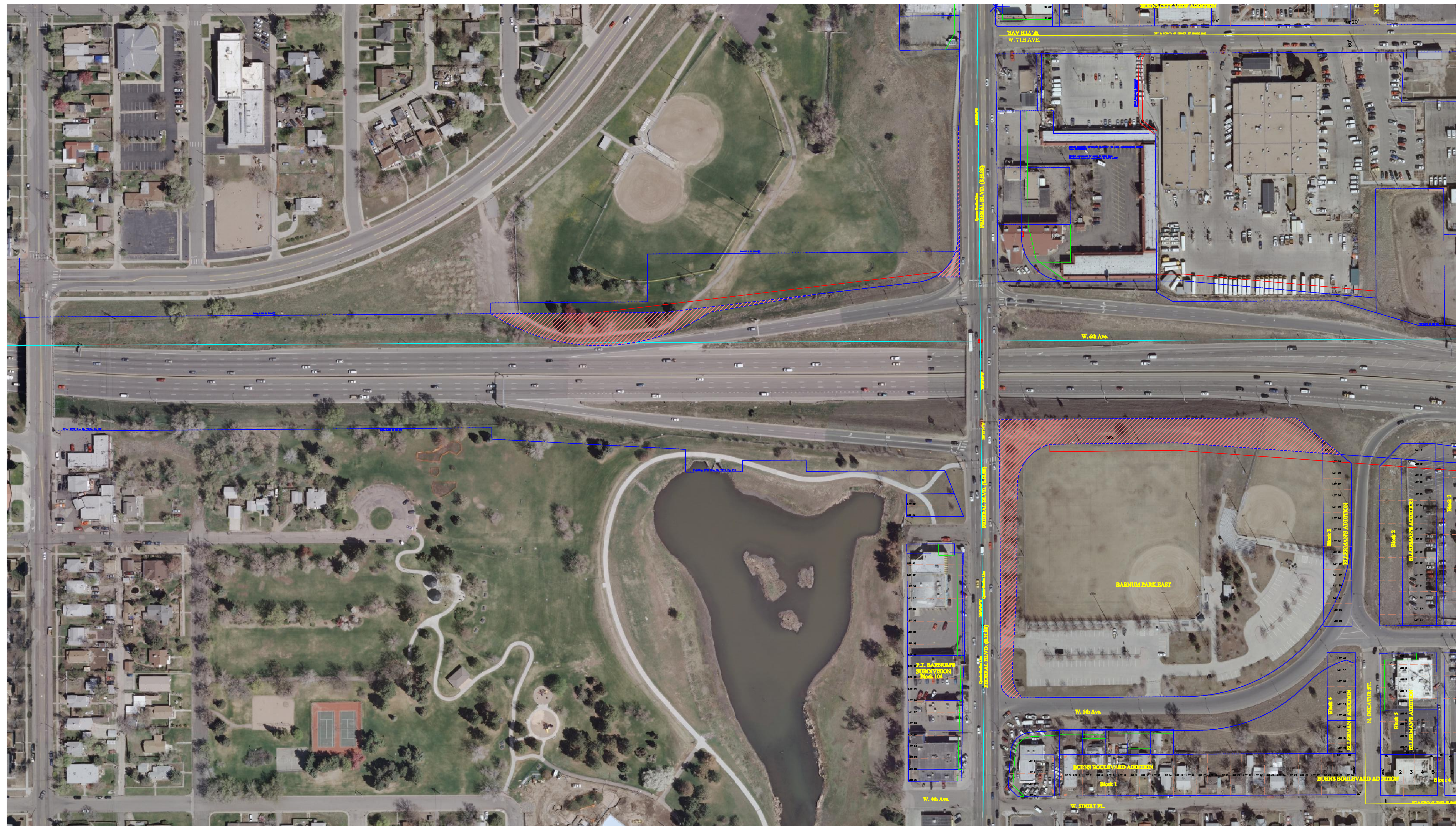
- U.S. 6 over Bryant Street
- U.S. 6 over the South Platte River
- U.S. 6 over the Burlington Northern Santa Fe (BNSF)
- U.S. 6 over I-25
- Federal Boulevard over U.S. 6
- The project will also be adding a new structure immediately east of I-25 under U.S. 6 to separate traffic on northbound I-25 from traffic exiting the interstate to travel east and west on U.S. 6.

Additionally, CDOT and the City and County of Denver have collaborated to expand the project to include:

- The Federal Boulevard/U.S. 6 interchange, which includes the replacement of the Federal Boulevard bridge and widening, from 5 to 6 lanes, Federal Boulevard from 5<sup>th</sup> to 7<sup>th</sup> avenues to accommodate current and future improvements on Federal Boulevard.
- Mitigation of Barnum East Park impacts..
- A bicycle/pedestrian bridge over U.S. 6 for connecting Denver's Barnum and Barnum North Parks west of Federal Boulevard.

Milestone	Start	Finish
Procurement Process (Select and award design-build contract)	August 2012	May 2013
Design	July 2013	January 2014
Construction	February 2014	Summer 2015







US 6 Bridges Design Build Project



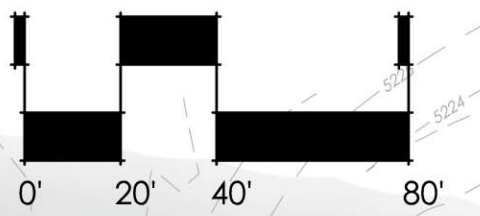
NORTH



SCALE: 1" = 40'



# US 6 Bridges Design Build Project



NORTH

SCALE: 1" = 40'

Slip Ramp

Existing Adult Baseball Field

Play Area

Stairway

Bleachers

New Plaza

Existing

Dugout (typ)

Reset Outfield Fence

Remove Access  
to Federal Ave.

Multi-Use Synthetic Turf Field

• 50 YD by 85 Yd Play Area

Retaining Wall

Overlook to Lower Field  
with Tables

Drop-off Area

New Parking Area  
(66 Total Parking  
Spaces)

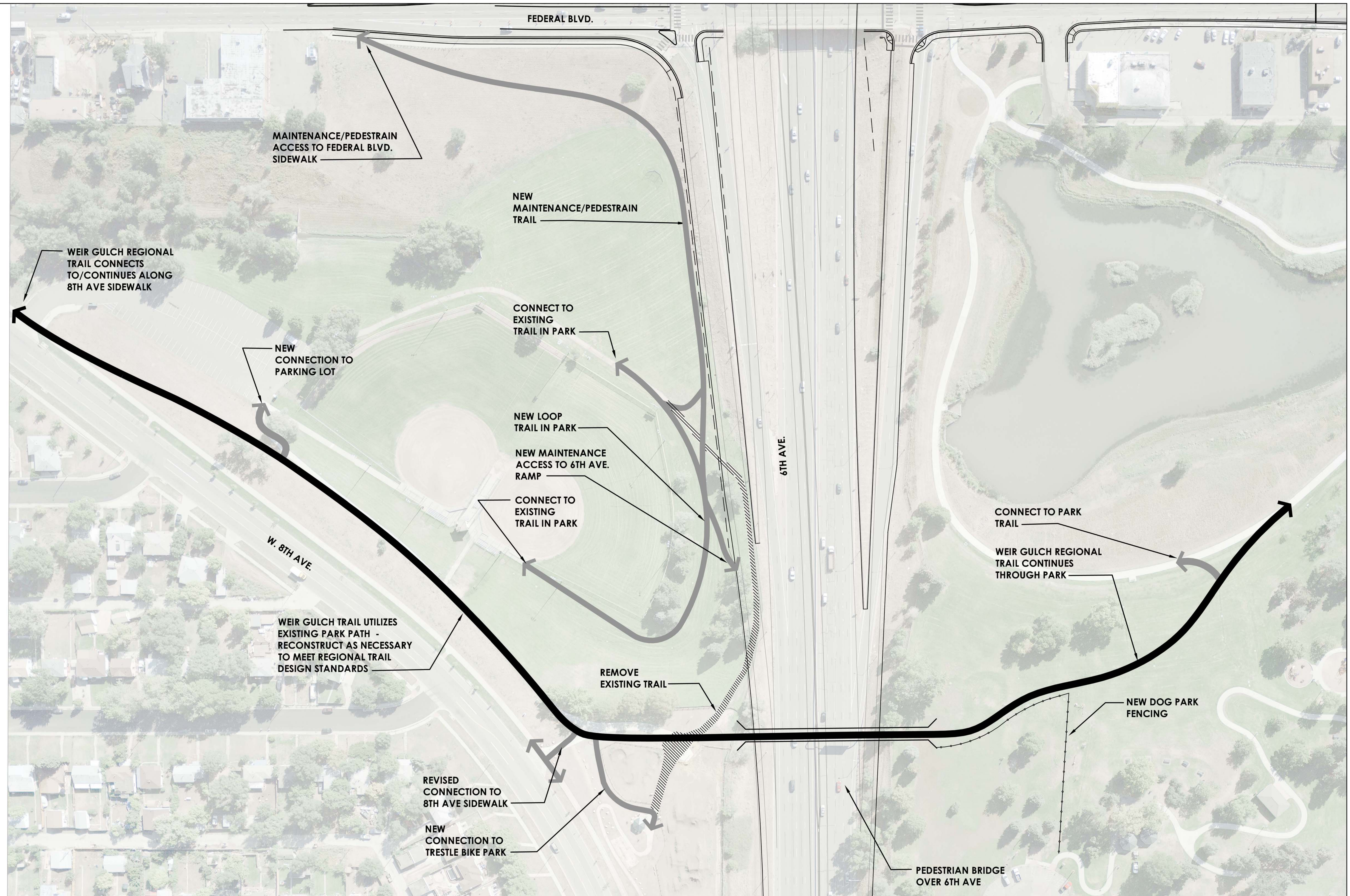
New Plumbed  
Restroom/Storage Building

5th Ave.

Existing Upper Parking Lot  
Restriped to Accommodate  
More Parking Spaces

Federal Blvd.





**BARNUM PARK**  
**BARNUM PARK NORTH/SOUTH TRAIL CONCEPT PLAN**  
 ADDENDUM #2 - DECEMBER 14, 2012



## US 6 and Federal CDOT Project

### Denver Parks and Recreation List of ARE's

1. Barnum North Park –Provide improvements to the existing trail around the ball field by removing and replacing with new concrete. Provide improvements to the parking lot including curb and gutter, paving and circulation related improvements to the lot.
2. Frog Hollow Park/Phil Milstein Park – Improve the current Platte River trail through this area to meet the new current regional trail standards of 12' concrete walk, 5' crusher fines side path and 3' of buffer area on each side of the trail.
3. Barnum South Park – Reconstruct the dog park at Barnum South to include a completely fenced dog park area with a large dog area and small dog area, shade shelter, benches, improved grading and contouring and sand/pea gravel surface mix.
4. Barnum East Park – Installation of a community garden in the parcel across <sup>5th</sup> Ave. from the main park. The community garden will need to include supplemental parking and enhanced landscape improvements including turf, irrigation, fencing and plantings