

A stylized map of North America in shades of blue. A black dot is placed over the location of Denver, Colorado, with the word "DENVER" written in a bold, sans-serif font to its right.

● DENVER

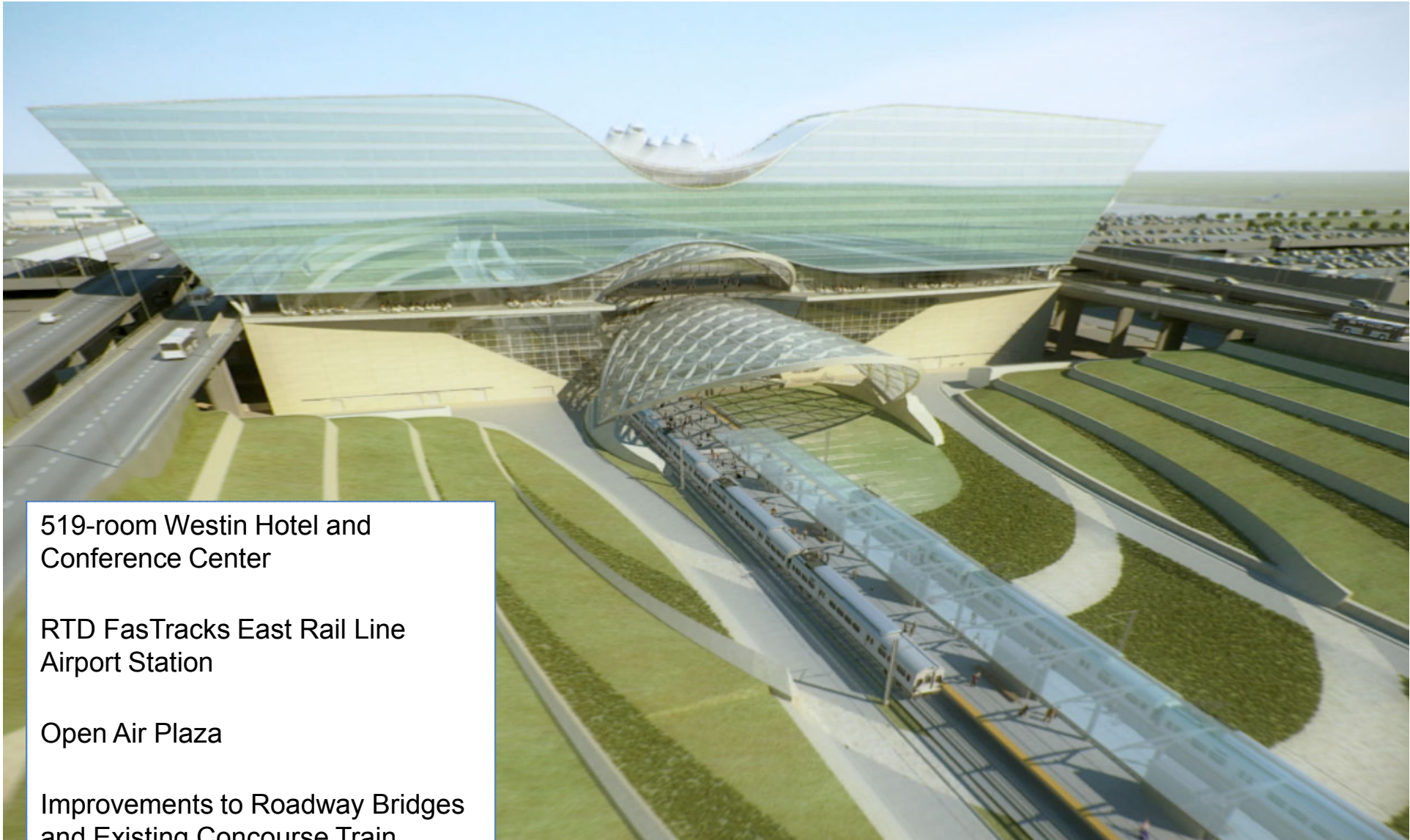
DIA Hotel and Transit Center Program

BWS Committee Presentation
January 22, 2014

Presented by Kim Day & Stu Williams



DENVER INTERNATIONAL AIRPORT
TOGETHER WE SOAR



519-room Westin Hotel and
Conference Center

RTD FasTracks East Rail Line
Airport Station

Open Air Plaza

Improvements to Roadway Bridges
and Existing Concourse Train
System

DIA Hotel and Transit Center



DENVER INTERNATIONAL AIRPORT
TOGETHER WE SOAR



● DENVER

PROGRAM UPDATE



DENVER INTERNATIONAL AIRPORT
TOGETHER WE SOAR

2013 - Significant Milestones

DENVER



Completion of Terminal West Bridges and Terminal East Level 5 Bridge



Fun Facts:

- A total of 80,000 square feet of bridge deck was constructed
- Kiewit placed 7,000 cubic yards of structural concrete
- Kiewit crews worked over 275,000 man hours without an accident

4

2013 - Significant Milestones

DENVER



Fun Facts:

- 4,100 tons of rebar was delivered to the Hotel and Public Transit Center
- MHS crews poured approximately 37,000 cubic yards of concrete for the hotel and train platform

Hotel Frame Constructed to Level 8

2013 - Significant Milestones

DENVER



Placement of Train Canopy Steel

Fun Facts:

- 1,000 tons (plus or minus) of Canopy Steel was delivered
- MHS worked approximately 540,000 man hours

6

2013 - Significant Milestones

DENVER

Construction of Transit Center Platform

Fun Facts:

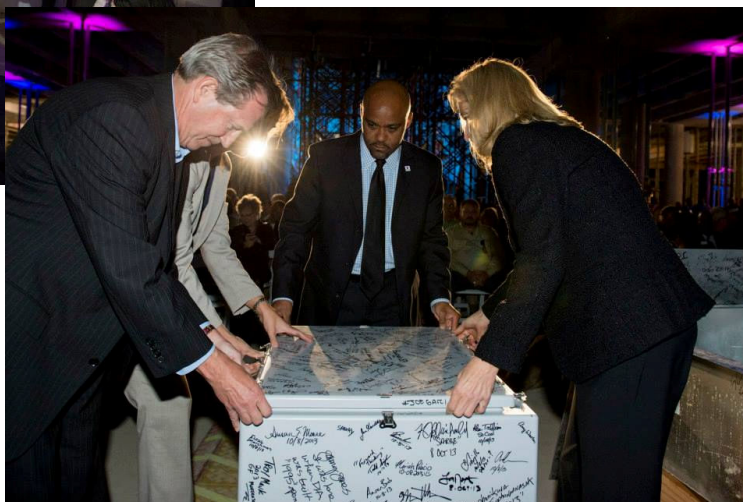
- Placed 1,500,000 pounds of rebar
- Completed 37,000 square feet of Shotcrete walls



7

2013 - Significant Milestones

DENVER



Fun Facts:

- The Facebook photo of the alien skull was seen by 23,000 viewers

Fun Facts:

- Over 500 attendees at the Mid Point Celebration
- DIA became the number one trending hashtag on Twitter the day of the event - with tweets reaching a total audience of 707,000

Hosted Mid Point Celebration

8

Budget and Estimates

DENVER

Budget

STRP	Budget <i>(in millions)</i>	Current Estimate <i>(in millions)</i>	Delta
Hotel	\$179	\$179	0%
Public Transit Center/Enabling	\$365	\$365	0%
Total STRP	\$544	\$544	0%

Related C.I.P.	Budget <i>(in millions)</i>	Current Estimate <i>(in millions)</i>	Delta
Related CIP Work <i>(Bridges, etc.)</i>	\$75	\$75	0%

RTD North of the "X" (NOX)	Budget <i>(in millions)</i>	Current Estimate <i>(in millions)</i>	Delta
RTD North of the "X" Work	\$53	\$53	0%

Schedule Milestone Summary

Intergovernmental Agreement with RTD

IGA Date: January 1, 2014

Current Status: January 1, 2014

Status: **COMPLETED**

Hotel Completion

Target Date: August 19, 2015

Current Status: September 10, 2015

Status: **- 21 days**

Change Management Committee

Composition:

- Patrick Heck (Chair)
- Eric Hiraga
- Scott Hergenrader (Consultant)
- Department of Finance Representative – Lupe Gutierrez-Vasquez
- Department of Public Works Representative – George Delaney
- Tom Hellwig (Parsons Brinckerhoff)

Scope of Work:

- Review of significant change orders
- Review of significant changes to project scope
- Analysis of schedule impacts
- Use or change in contingency
- Administration of allowances
- Management of unforeseen events



Change Management Committee

General Update

- Committee has met monthly since August

MHS Contract Update

- \$1,742,094 Owner's Contingency authorized to date
- Current Owner's Contingency balance - \$4,419,075

Safety

DENVER

1,176,064
Man-Hours Worked

By the Numbers

Recordable Incidents	18
First Aid Cases	26
Restrictive Duty Cases	6
Loss Time Cases	3

Recordable Injury
Frequency = 4.3
(Industry Avg. = 4.30)

Lost Workday Case
Rate = 2
(Industry Avg. = 2.30)

Pre-employment
Drug Testing =
98% Negative

Diversity Program

DENVER

Program Statistics	
Total Firms	299
Local Firms	256
M/WBE Firms	118

Program Achievements:

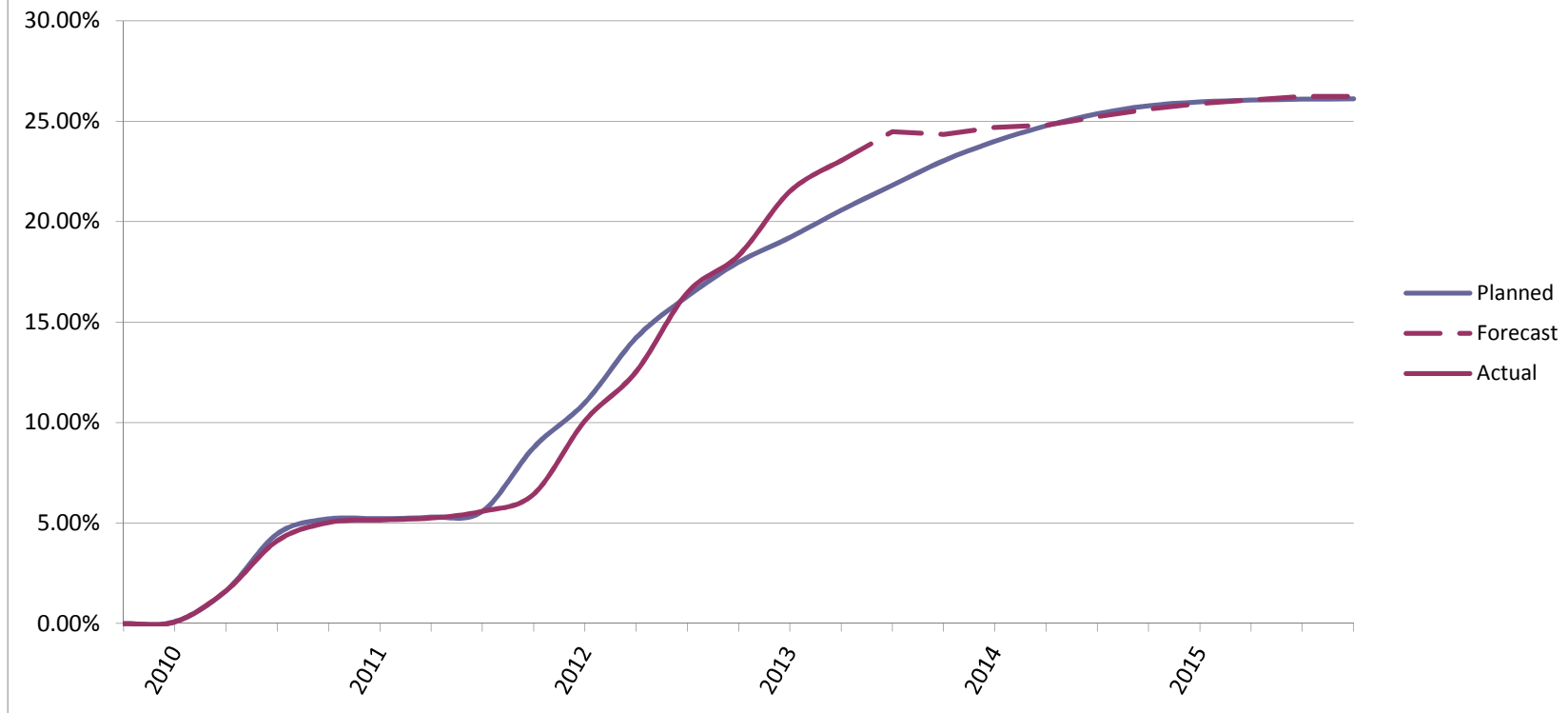
- More than 100 M/WBE firms under contract, comprising more than 40% of total firms on program
- ASCEND Capacity Building/Education Initiative has provided over 400 hours of training and education to contracted M/WBEs in the first 3 quarters of 2013
- Regular events and meetings provide M/WBE firms access to key DIA and program leaders

Outreach Activities

- Active involvement in community and trade organizations through membership, presentations and committee participation.
- Our Diversity and Outreach team members participated in/attended over 40 community events October.

Overall M/WBE Program Participation

DIA Hotel and Transit Center Program Quarterly M/WBE Participation

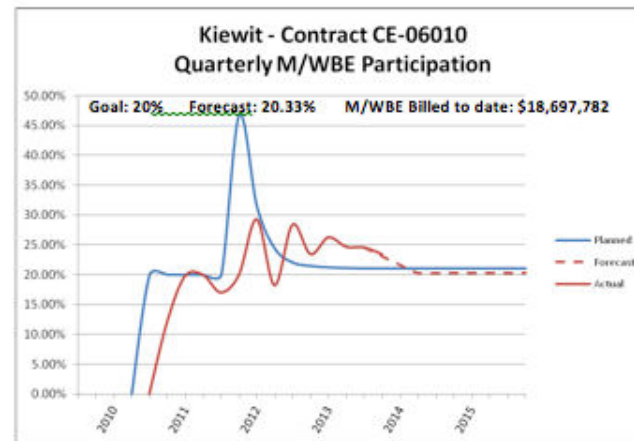
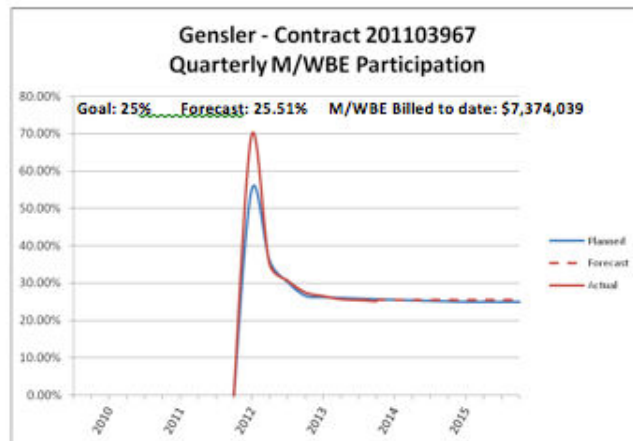
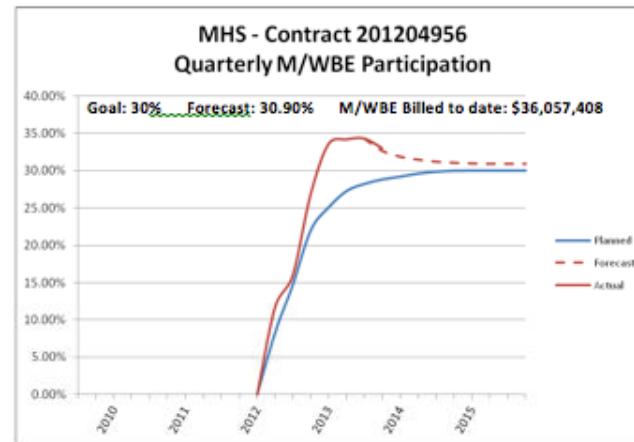
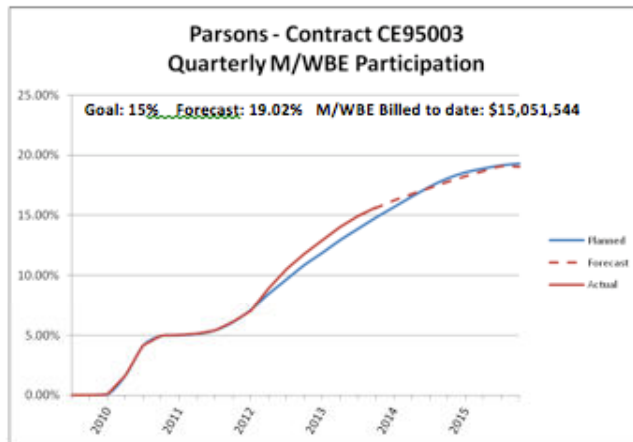


M/WBE Participation by Firm

DENVER

DIA Hotel and Transit Center

Quarterly M/WBE Participation and Forecast, thru November 2013





● DENVER

PROGRAM LOOK AHEAD



DENVER INTERNATIONAL AIRPORT
TOGETHER WE SOAR

2013

*Complete terminal west roadways
Reconstructed terminal east roadways
Utilities
Canopy structures
Foundation structures
Superstructure construction
Hotel structure to Level 8
Transit Center platform construction*

2014

***Public Transit Center platform hand-off to RTD by January 1
Hotel structure complete to Level 14
Reopen Terminal East Level 6 Bridges
Reattach Tent Cables and Remove temporary Truss Towers***

2015

*Hotel and Transit Center finishes
Landscaping
Open Westin hotel
Program Completion*

2016

RTD's East Rail Line begins service to DIA in early 2016