

## ORDINANCE/RESOLUTION REQUEST

Please email requests to the Mayor's Legislative Team  
at [MileHighOrdinance@DenverGov.org](mailto:MileHighOrdinance@DenverGov.org) by **9 a.m. Friday**. Contact the Mayor's Legislative team with questions

Date of Request: 5/3/2024

Please mark one:  Bill Request or  Resolution Request

### 1. Type of Request:

Contract/Grant Agreement  Intergovernmental Agreement (IGA)  Rezoning/Text Amendment

Dedication/Vacation  Appropriation/Supplemental  DRMC Change

Other:

2. **Title:** (Start with *approves, amends, dedicates*, etc., include name of company or contractor and indicate the type of request: grant acceptance, contract execution, contract amendment, municipal code change, supplemental request, etc.)

Approves a master on-call agreement with Environmental Tree Care LLC for tree maintenance including tree pruning, tree and stump removal and grinding of stumps, tree/shrub removal and stump treatment along waterways; Debris removal in parks, parkways and city facilities; structural tree pruning on smaller diameter trees in parks, parkways, City golf course properties, and City Facilities; scheduled tree pruning and Stump Removal and Grinding of Stumps for Parkway Trees in area D (map attached); and tree pruning, tree removal on Public Right-of-Ways and Public Property; Stump and debris removal and emergency tree services on public-right-of-ways.

3. **Requesting Agency:** Denver Parks and Recreation

### 4. Contact Person:

Contact person with knowledge of proposed ordinance/resolution (e.g., subject matter expert)	Contact person for council members or mayor-council
Name: Ben Rickenbacker	Name: Jesus Orrantia
Email: Benjamin.Rickenbacker@denvergov.org	Email: jesus.orrantia@denvergov.org

5. **General description or background of proposed request. Attach executive summary if more space needed:**

The purpose of these on-call contracts is to establish and maintain a pool of qualified on-call general tree contractors available to respond to proposal bidding requests for the execution of the Office of the City Forester 3-year work plan. Contracts are for tree maintenance services in public spaces and private property as well as emergency tree services for a period of 3 years on as needed basis.

6. **City Attorney assigned to this request (if applicable):** Jason Moore

7. **City Council District:** Citywide

8. **\*\*For all contracts, fill out and submit accompanying Key Contract Terms worksheet\*\***

*To be completed by Mayor's Legislative Team:*

Resolution/Bill Number: \_\_\_\_\_

Date Entered: \_\_\_\_\_

## Key Contract Terms

**Type of Contract: (e.g. Professional Services > \$500K; IGA/Grant Agreement, Sale or Lease of Real Property):** Master On-Call Contract

**Vendor/Contractor Name (including any dba's):** Environmental Tree Care LLC

**Contract control number (legacy and new):** 202473454

**Location:** Citywide

**Is this a new contract?**  Yes  No **Is this an Amendment?**  Yes  No **If yes, how many?** \_\_\_\_\_

**Contract Term/Duration (for amended contracts, include existing term dates and amended dates):** 3 years

**Contract Amount (indicate existing amount, amended amount and new contract total):** \$1,500,000.00

<i>Current Contract Amount (A)</i>	<i>Additional Funds (B)</i>	<i>Total Contract Amount (A+B)</i>
\$1,000,000.00	n/a	\$1,000,000.00

<i>Current Contract Term</i>	<i>Added Time</i>	<i>New Ending Date</i>
Effective date + 3 years	n/a	Effective date + 3 years

**Scope of work:**

Tree maintenance services including on public and private property described in the section groups 1, 2, 3,4,5,6 and 6A, 6B, 6D,6E, 6F. Full description of groups in executive summary.

**Was this contractor selected by competitive process?** Yes **If not, why not?**

**Has this contractor provided these services to the City before?**  Yes  No

**Source of funds:** CIP, Legacy, and Forestry General Fund

**Is this contract subject to:**  W/MBE  DBE  SBE  XO101  ACDBE  N/A

**WBE/MBE/DBE commitments (construction, design, Airport concession contracts):** N/A

**Who are the subcontractors to this contract?** TBD

*To be completed by Mayor's Legislative Team:*

Resolution/Bill Number: \_\_\_\_\_

Date Entered: \_\_\_\_\_

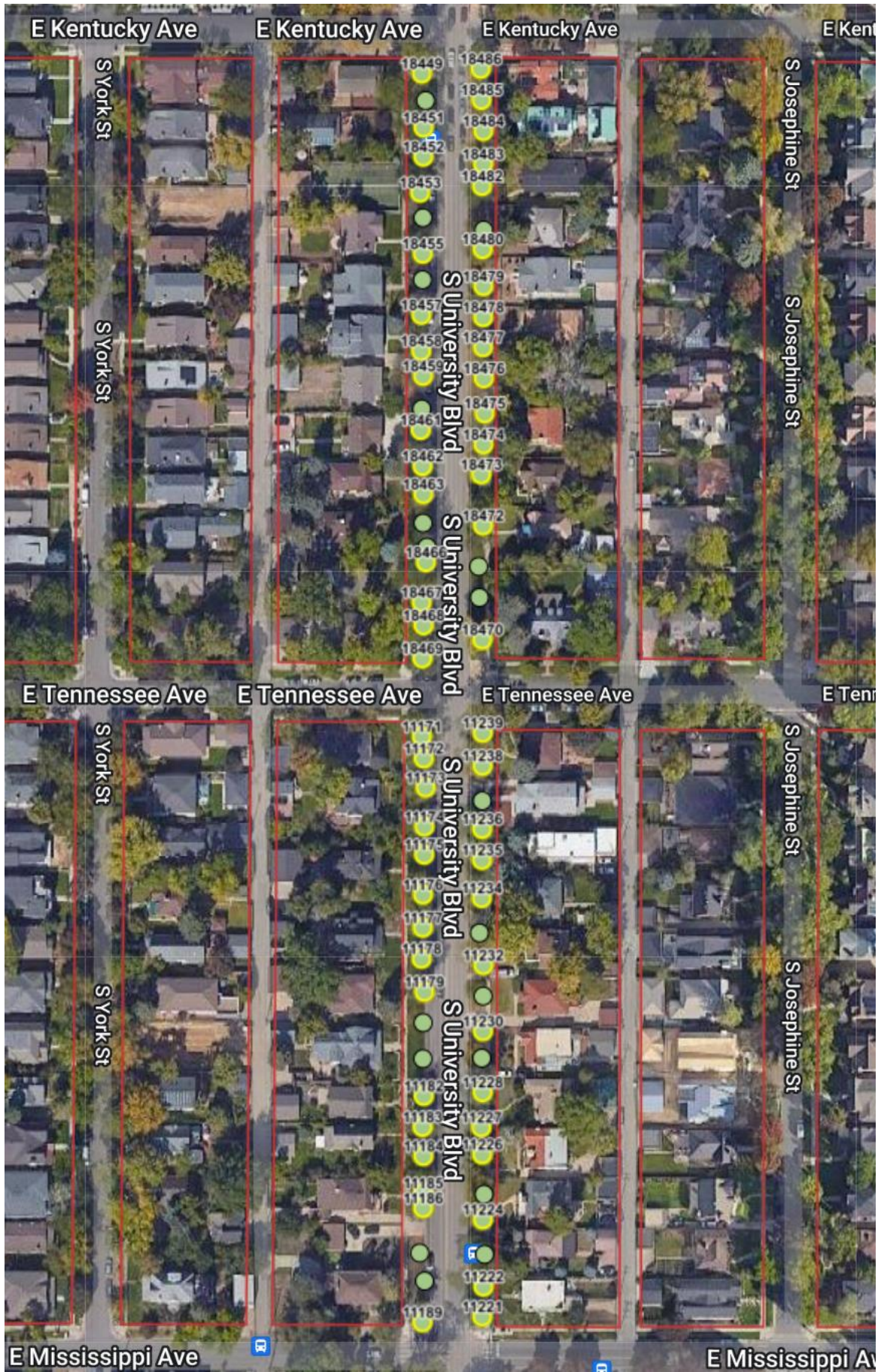
**Area D:** Environmental Tree Care LLC





**University Blvd - E Exposition to E Kentucky (33 trees)**

Site ID	Address Street	Species	Size Class
18488	2367 E KENTUCKY AVE	Honeylocust (Gleditsia triacanthos)	30 to 36
18489	2367 E KENTUCKY AVE	Honeylocust (Gleditsia triacanthos)	30 to 36
19105	730 S UNIVERSITY BLVD	Honeylocust (Gleditsia triacanthos)	18 to 24
19104	750 S UNIVERSITY BLVD	Honeylocust (Gleditsia triacanthos)	12 to 18
19110	803 S UNIVERSITY BLVD	Honeylocust (Gleditsia triacanthos)	24 to 30
19098	810 S UNIVERSITY BLVD	Honeylocust (Gleditsia triacanthos)	18 to 24
19099	810 S UNIVERSITY BLVD	Honeylocust (Gleditsia triacanthos)	18 to 24
19101	810 S UNIVERSITY BLVD	Honeylocust (Gleditsia triacanthos)	24 to 30
19102	810 S UNIVERSITY BLVD	Honeylocust (Gleditsia triacanthos)	30 to 36
19103	810 S UNIVERSITY BLVD	Honeylocust (Gleditsia triacanthos)	24 to 30
19112	819 S UNIVERSITY BLVD	Honeylocust (Gleditsia triacanthos)	18 to 24
19097	824 S UNIVERSITY BLVD	Honeylocust (Gleditsia triacanthos)	18 to 24
19113	827 S UNIVERSITY BLVD	Ash, Green (Fraxinus pennsylvanica)	18 to 24
19095	834 S UNIVERSITY BLVD	Honeylocust (Gleditsia triacanthos)	18 to 24
19096	834 S UNIVERSITY BLVD	Honeylocust (Gleditsia triacanthos)	18 to 24
19114	835 S UNIVERSITY BLVD	Honeylocust (Gleditsia triacanthos)	30 to 36
19093	840 S UNIVERSITY BLVD	Honeylocust (Gleditsia triacanthos)	24 to 30
19094	840 S UNIVERSITY BLVD	Honeylocust (Gleditsia triacanthos)	24 to 30
19115	843 S UNIVERSITY BLVD	Elm, Siberian (Ulmus pumila)	30 to 36
19116	843 S UNIVERSITY BLVD	Elm, Siberian (Ulmus pumila)	36 to 42
19091	850 S UNIVERSITY BLVD	Honeylocust (Gleditsia triacanthos)	18 to 24
19092	850 S UNIVERSITY BLVD	Honeylocust (Gleditsia triacanthos)	18 to 24
18493	858 S UNIVERSITY BLVD	Honeylocust (Gleditsia triacanthos)	18 to 24
19118	859 S UNIVERSITY BLVD	Honeylocust (Gleditsia triacanthos)	18 to 24
18490	864 S UNIVERSITY BLVD	Honeylocust (Gleditsia triacanthos)	18 to 24
18491	864 S UNIVERSITY BLVD	Honeylocust (Gleditsia triacanthos)	24 to 30
19120	867 S UNIVERSITY BLVD	Honeylocust (Gleditsia triacanthos)	24 to 30
19121	867 S UNIVERSITY BLVD	Honeylocust (Gleditsia triacanthos)	18 to 24
19122	875 S UNIVERSITY BLVD	Elm, Siberian (Ulmus pumila)	36 to 42
19123	875 S UNIVERSITY BLVD	Honeylocust (Gleditsia triacanthos)	12 to 18
19124	883 S UNIVERSITY BLVD	Honeylocust (Gleditsia triacanthos)	12 to 18
19125	883 S UNIVERSITY BLVD	Honeylocust (Gleditsia triacanthos)	36 to 42
19126	891 S UNIVERSITY BLVD	Elm, Siberian (Ulmus pumila)	42 to 48



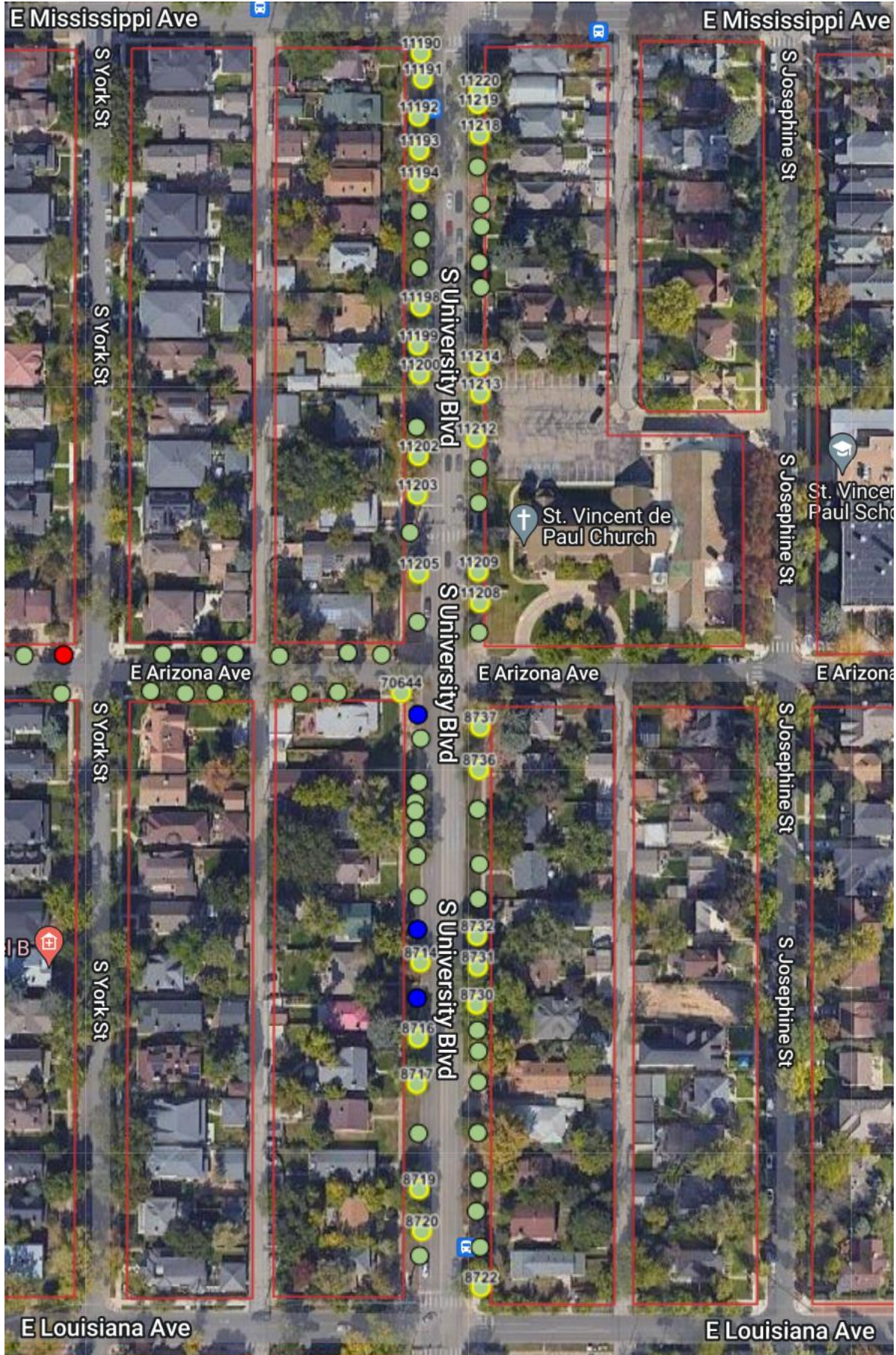


**University Blvd - E Kentucky Ave to E Mississippi Ave (58 trees)**

Site ID	Address Street	Species	Size Class
11189	2375 E MISSISSIPPI AVE	Honeylocust (Gleditsia triacanthos)	18 to 24
18470	2365 E TENNESSEE AVE	Ash, Green (Fraxinus pennsylvanica)	12 to 18
18485	900 S UNIVERSITY BLVD	Honeylocust (Gleditsia triacanthos)	24 to 30
18486	900 S UNIVERSITY BLVD	Honeylocust (Gleditsia triacanthos)	24 to 30
18449	901 S UNIVERSITY BLVD	Honeylocust (Gleditsia triacanthos)	30 to 36
18484	910 S UNIVERSITY BLVD	Honeylocust (Gleditsia triacanthos)	30 to 36
18451	911 S UNIVERSITY BLVD	Honeylocust (Gleditsia triacanthos)	24 to 30
18452	911 S UNIVERSITY BLVD	Honeylocust (Gleditsia triacanthos)	24 to 30
18482	918 S UNIVERSITY BLVD	Honeylocust (Gleditsia triacanthos)	30 to 36
18483	918 S UNIVERSITY BLVD	Honeylocust (Gleditsia triacanthos)	30 to 36
18453	921 S UNIVERSITY BLVD	Honeylocust (Gleditsia triacanthos)	30 to 36
18455	925 S UNIVERSITY BLVD	Honeylocust (Gleditsia triacanthos)	30 to 36
18480	926 S UNIVERSITY BLVD	Honeylocust (Gleditsia triacanthos)	30 to 36
18479	934 S UNIVERSITY BLVD	Honeylocust (Gleditsia triacanthos)	24 to 30
18477	940 S UNIVERSITY BLVD	Honeylocust (Gleditsia triacanthos)	24 to 30
18478	940 S UNIVERSITY BLVD	Honeylocust (Gleditsia triacanthos)	30 to 36
18457	945 S UNIVERSITY BLVD	Honeylocust (Gleditsia triacanthos)	24 to 30
18458	945 S UNIVERSITY BLVD	Honeylocust (Gleditsia triacanthos)	24 to 30
18475	950 S UNIVERSITY BLVD	Honeylocust (Gleditsia triacanthos)	24 to 30
18476	950 S UNIVERSITY BLVD	Honeylocust (Gleditsia triacanthos)	30 to 36
18459	953 S UNIVERSITY BLVD	Honeylocust (Gleditsia triacanthos)	30 to 36
18474	958 S UNIVERSITY BLVD	Honeylocust (Gleditsia triacanthos)	30 to 36
18461	959 S UNIVERSITY BLVD	Honeylocust (Gleditsia triacanthos)	24 to 30
18462	965 S UNIVERSITY BLVD	Honeylocust (Gleditsia triacanthos)	30 to 36
18463	965 S UNIVERSITY BLVD	Honeylocust (Gleditsia triacanthos)	30 to 36
18473	966 S UNIVERSITY BLVD	Honeylocust (Gleditsia triacanthos)	30 to 36
18472	972 S UNIVERSITY BLVD	Honeylocust (Gleditsia triacanthos)	30 to 36
18466	975 S UNIVERSITY BLVD	Honeylocust (Gleditsia triacanthos)	30 to 36
18467	983 S UNIVERSITY BLVD	Honeylocust (Gleditsia triacanthos)	36 to 42
18468	993 S UNIVERSITY BLVD	Honeylocust (Gleditsia triacanthos)	24 to 30
18469	993 S UNIVERSITY BLVD	Honeylocust (Gleditsia triacanthos)	24 to 30
11238	1000 S UNIVERSITY BLVD	Honeylocust (Gleditsia triacanthos)	24 to 30
11239	1000 S UNIVERSITY BLVD	Honeylocust (Gleditsia triacanthos)	24 to 30
11171	1001 S UNIVERSITY BLVD	Honeylocust (Gleditsia triacanthos)	30 to 36
11172	1001 S UNIVERSITY BLVD	Honeylocust (Gleditsia triacanthos)	18 to 24
11236	1010 S UNIVERSITY BLVD	Honeylocust (Gleditsia triacanthos)	30 to 36
11173	1015 S UNIVERSITY BLVD	Honeylocust (Gleditsia triacanthos)	18 to 24
11174	1015 S UNIVERSITY BLVD	Honeylocust (Gleditsia triacanthos)	18 to 24
11235	1020 S UNIVERSITY BLVD	Honeylocust (Gleditsia triacanthos)	24 to 30
11234	1026 S UNIVERSITY BLVD	Honeylocust (Gleditsia triacanthos)	30 to 36

11175	1027 S UNIVERSITY BLVD	Honeylocust (Gleditsia triacanthos)	18 to 24
11176	1027 S UNIVERSITY BLVD	Honeylocust (Gleditsia triacanthos)	24 to 30
11177	1033 S UNIVERSITY BLVD	Honeylocust (Gleditsia triacanthos)	24 to 30
11178	1033 S UNIVERSITY BLVD	Honeylocust (Gleditsia triacanthos)	24 to 30
11232	1034 S UNIVERSITY BLVD	Honeylocust (Gleditsia triacanthos)	24 to 30
11179	1037 S UNIVERSITY BLVD	Honeylocust (Gleditsia triacanthos)	24 to 30
11230	1044 S UNIVERSITY BLVD	Honeylocust (Gleditsia triacanthos)	30 to 36
11182	1057 S UNIVERSITY BLVD	Honeylocust (Gleditsia triacanthos)	18 to 24
11183	1057 S UNIVERSITY BLVD	Honeylocust (Gleditsia triacanthos)	24 to 30
11227	1060 S UNIVERSITY BLVD	Honeylocust (Gleditsia triacanthos)	12 to 18
11228	1060 S UNIVERSITY BLVD	Honeylocust (Gleditsia triacanthos)	30 to 36
11184	1063 S UNIVERSITY BLVD	Honeylocust (Gleditsia triacanthos)	18 to 24
11226	1066 S UNIVERSITY BLVD	Linden, Littleleaf (Tilia cordata)	18 to 24
11224	1072 S UNIVERSITY BLVD	Honeylocust (Gleditsia triacanthos)	24 to 30
11185	1075 S UNIVERSITY BLVD	Honeylocust (Gleditsia triacanthos)	24 to 30
11186	1075 S UNIVERSITY BLVD	Honeylocust (Gleditsia triacanthos)	24 to 30
11221	1094 S UNIVERSITY BLVD	Honeylocust (Gleditsia triacanthos)	18 to 24
11222	1094 S UNIVERSITY BLVD	Honeylocust (Gleditsia triacanthos)	30 to 36

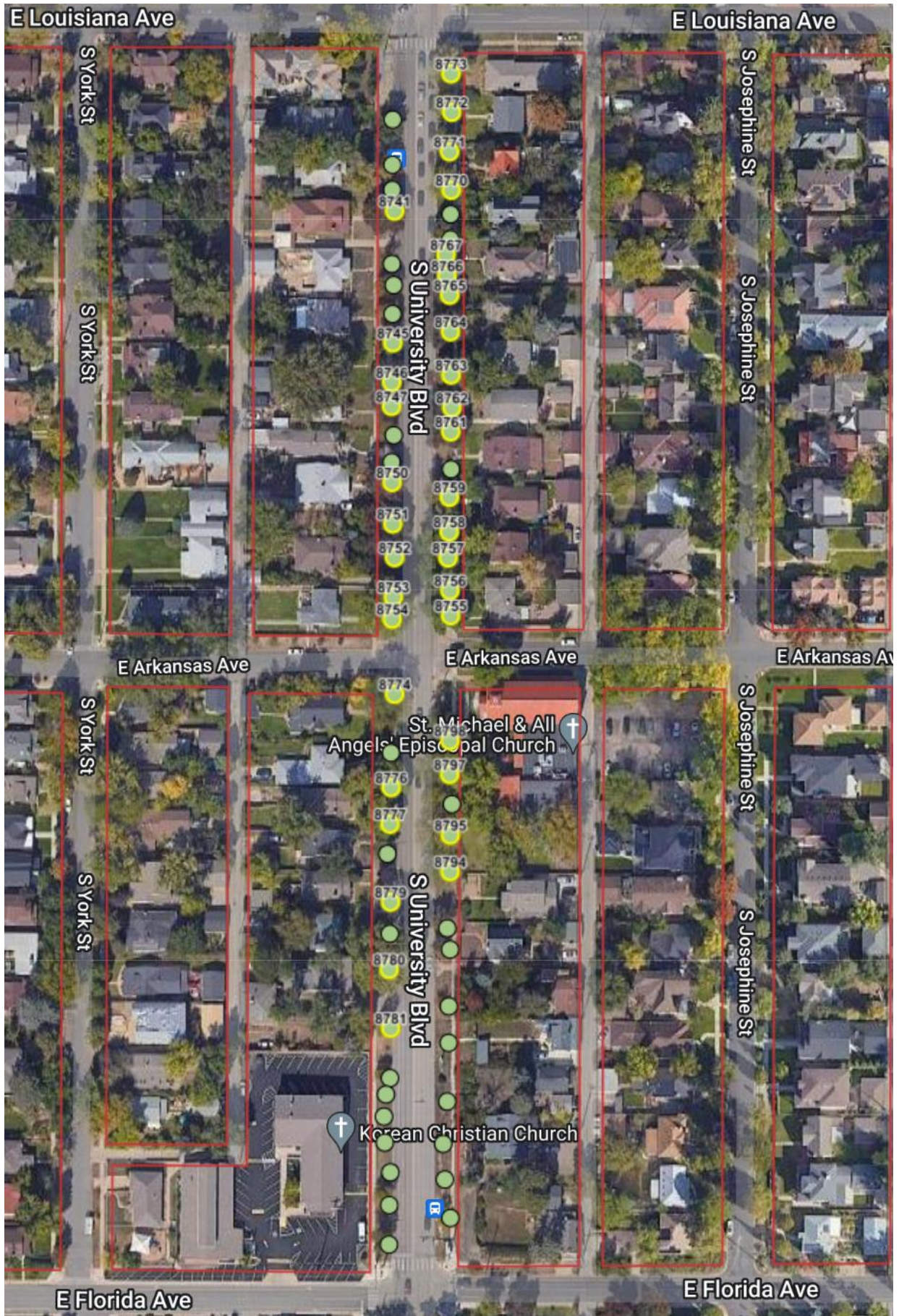




**University Blvd - E Mississippi Ave to E Louisiana Ave (31 trees)**

Site ID	Address Street	Species	Size Class
8722	2351 E LOUISIANA AVE	Ash, Green ( <i>Fraxinus pennsylvanica</i> )	18 to 24
11208	2375 E MISSISSIPPI AVE	Honeylocust ( <i>Gleditsia triacanthos</i> )	24 to 30
11209	2375 E MISSISSIPPI AVE	Honeylocust ( <i>Gleditsia triacanthos</i> )	30 to 36
11212	2375 E MISSISSIPPI AVE	Honeylocust ( <i>Gleditsia triacanthos</i> )	24 to 30
11213	2375 E MISSISSIPPI AVE	Honeylocust ( <i>Gleditsia triacanthos</i> )	24 to 30
11190	1101 S UNIVERSITY BLVD	Honeylocust ( <i>Gleditsia triacanthos</i> )	30 to 36
11191	1101 S UNIVERSITY BLVD	Honeylocust ( <i>Gleditsia triacanthos</i> )	24 to 30
11219	1108 S UNIVERSITY BLVD	Elm, American ( <i>Ulmus americana</i> )	30 to 36
11220	1108 S UNIVERSITY BLVD	Elm, American ( <i>Ulmus americana</i> )	24 to 30
11192	1111 S UNIVERSITY BLVD	Linden, American ( <i>Tilia americana</i> )	12 to 18
11218	1112 S UNIVERSITY BLVD	Elm, American ( <i>Ulmus americana</i> )	24 to 30
11193	1117 S UNIVERSITY BLVD	Honeylocust ( <i>Gleditsia triacanthos</i> )	24 to 30
11194	1125 S UNIVERSITY BLVD	Elm, American ( <i>Ulmus americana</i> )	30 to 36
11198	1143 S UNIVERSITY BLVD	Honeylocust ( <i>Gleditsia triacanthos</i> )	30 to 36
11214	1144 S UNIVERSITY BLVD	Maple, Silver ( <i>Acer saccharinum</i> )	36 to 42
11199	1149 S UNIVERSITY BLVD	Honeylocust ( <i>Gleditsia triacanthos</i> )	24 to 30
11200	1149 S UNIVERSITY BLVD	Elm, American ( <i>Ulmus americana</i> )	36 to 42
11202	1171 S UNIVERSITY BLVD	Honeylocust ( <i>Gleditsia triacanthos</i> )	18 to 24
11203	1171 S UNIVERSITY BLVD	Honeylocust ( <i>Gleditsia triacanthos</i> )	12 to 18
11205	1185 S UNIVERSITY BLVD	Linden, Littleleaf ( <i>Tilia cordata</i> )	12 to 18
8737	1200 S UNIVERSITY BLVD	Hackberry, Common ( <i>Celtis occidentalis</i> )	18 to 24
70644	1201 S UNIVERSITY BLVD	Maple, Silver ( <i>Acer saccharinum</i> )	36 to 42
8736	1216 S UNIVERSITY BLVD	Honeylocust ( <i>Gleditsia triacanthos</i> )	18 to 24
8732	1234 S UNIVERSITY BLVD	Linden, American ( <i>Tilia americana</i> )	12 to 18
8730	1240 S UNIVERSITY BLVD	Elm, American ( <i>Ulmus americana</i> )	36 to 42
8731	1240 S UNIVERSITY BLVD	Oak, Northern Red ( <i>Quercus rubra</i> )	12 to 18
8714	1241 S UNIVERSITY BLVD	Linden, American ( <i>Tilia americana</i> )	12 to 18
8716	1247 S UNIVERSITY BLVD	Ash, Green ( <i>Fraxinus pennsylvanica</i> )	12 to 18
8717	1259 S UNIVERSITY BLVD	Ash, Green ( <i>Fraxinus pennsylvanica</i> )	18 to 24
8719	1275 S UNIVERSITY BLVD	Ash, Green ( <i>Fraxinus pennsylvanica</i> )	24 to 30
8720	1283 S UNIVERSITY BLVD	Ash, Green ( <i>Fraxinus pennsylvanica</i> )	12 to 18





E Louisiana Ave

E Louisiana Ave

S York St

S Josephine St

S York St

S Josephine St

S University Blvd

8773

8772

8771

8770

8741

8767

8766

8765

8764

8745

8763

8746

8762

8747

8761

8750

8759

8751

8758

8752

8757

8753

8756

8754

8755

E Arkansas Ave

E Arkansas Ave

E Arkansas Ave

S York St

S Josephine St

S York St

S Josephine St

S University Blvd

8774

8773

8776

8777

8795

8794

8779

8780

8781

8797

8795

8794

St. Michael & All Angels' Episcopal Church

Korean Christian Church

E Florida Ave

E Florida Ave



## University Blvd - E Louisiana Ave to E Florida Ave (35 trees)

Site ID	Address Street	Species	Size Class
8772	1310 S UNIVERSITY BLVD	Linden, American ( <i>Tilia americana</i> )	24 to 30
8773	1310 S UNIVERSITY BLVD	Hackberry, Common ( <i>Celtis occidentalis</i> )	18 to 24
8770	1320 S UNIVERSITY BLVD	Ash, Green ( <i>Fraxinus pennsylvanica</i> )	12 to 18
8771	1320 S UNIVERSITY BLVD	Linden, American ( <i>Tilia americana</i> )	24 to 30
8741	1325 S UNIVERSITY BLVD	Ash, White ( <i>Fraxinus americana</i> )	18 to 24
8766	1328 S UNIVERSITY BLVD	Linden, American ( <i>Tilia americana</i> )	12 to 18
8767	1328 S UNIVERSITY BLVD	Willow ( <i>Salix</i> species)	18 to 24
8764	1332 S UNIVERSITY BLVD	Ash, White ( <i>Fraxinus americana</i> )	12 to 18
8765	1332 S UNIVERSITY BLVD	Ash, White ( <i>Fraxinus americana</i> )	12 to 18
8745	1343 S UNIVERSITY BLVD	Maple, Silver ( <i>Acer saccharinum</i> )	12 to 18
8746	1351 S UNIVERSITY BLVD	Ash, White ( <i>Fraxinus americana</i> )	18 to 24
8763	1352 S UNIVERSITY BLVD	Linden, American ( <i>Tilia americana</i> )	12 to 18
8747	1357 S UNIVERSITY BLVD	Ash, White ( <i>Fraxinus americana</i> )	18 to 24
8761	1362 S UNIVERSITY BLVD	Ash, White ( <i>Fraxinus americana</i> )	18 to 24
8762	1362 S UNIVERSITY BLVD	Linden, American ( <i>Tilia americana</i> )	12 to 18
8750	1375 S UNIVERSITY BLVD	Ash, White ( <i>Fraxinus americana</i> )	18 to 24
8751	1375 S UNIVERSITY BLVD	Ash, White ( <i>Fraxinus americana</i> )	18 to 24
8758	1378 S UNIVERSITY BLVD	Ash, Green ( <i>Fraxinus pennsylvanica</i> )	12 to 18
8759	1378 S UNIVERSITY BLVD	Ash, Green ( <i>Fraxinus pennsylvanica</i> )	12 to 18
8757	1382 S UNIVERSITY BLVD	Ash, Green ( <i>Fraxinus pennsylvanica</i> )	18 to 24
8752	1383 S UNIVERSITY BLVD	Ash, White ( <i>Fraxinus americana</i> )	12 to 18
8755	1394 S UNIVERSITY BLVD	Ash, Green ( <i>Fraxinus pennsylvanica</i> )	18 to 24
8756	1394 S UNIVERSITY BLVD	Ash, Green ( <i>Fraxinus pennsylvanica</i> )	18 to 24
8753	1395 S UNIVERSITY BLVD	Ash, Green ( <i>Fraxinus pennsylvanica</i> )	12 to 18
8754	1395 S UNIVERSITY BLVD	Elm, American ( <i>Ulmus americana</i> )	30 to 36
8794	1400 S UNIVERSITY BLVD	Honeylocust ( <i>Gleditsia triacanthos</i> )	12 to 18
8795	1400 S UNIVERSITY BLVD	Honeylocust ( <i>Gleditsia triacanthos</i> )	18 to 24
8797	1400 S UNIVERSITY BLVD	Honeylocust ( <i>Gleditsia triacanthos</i> )	18 to 24
8798	1400 S UNIVERSITY BLVD	Honeylocust ( <i>Gleditsia triacanthos</i> )	12 to 18
8774	1403 S UNIVERSITY BLVD	Honeylocust ( <i>Gleditsia triacanthos</i> )	18 to 24
8776	1411 S UNIVERSITY BLVD	Ash, Green ( <i>Fraxinus pennsylvanica</i> )	18 to 24
8777	1417 S UNIVERSITY BLVD	Ash, Green ( <i>Fraxinus pennsylvanica</i> )	18 to 24
8779	1429 S UNIVERSITY BLVD	Linden, Littleleaf ( <i>Tilia cordata</i> )	12 to 18
8780	1449 S UNIVERSITY BLVD	Elm, American ( <i>Ulmus americana</i> )	36 to 42
8781	1449 S UNIVERSITY BLVD	Linden, American ( <i>Tilia americana</i> )	12 to 18