

# DENVER PARKS AND RECREATION

Land Use, Transportation, & Infrastructure Committee  
Council Bills 23-0576 and 23-0577  
May 16, 2023



**DENVER**  
PARKS & RECREATION

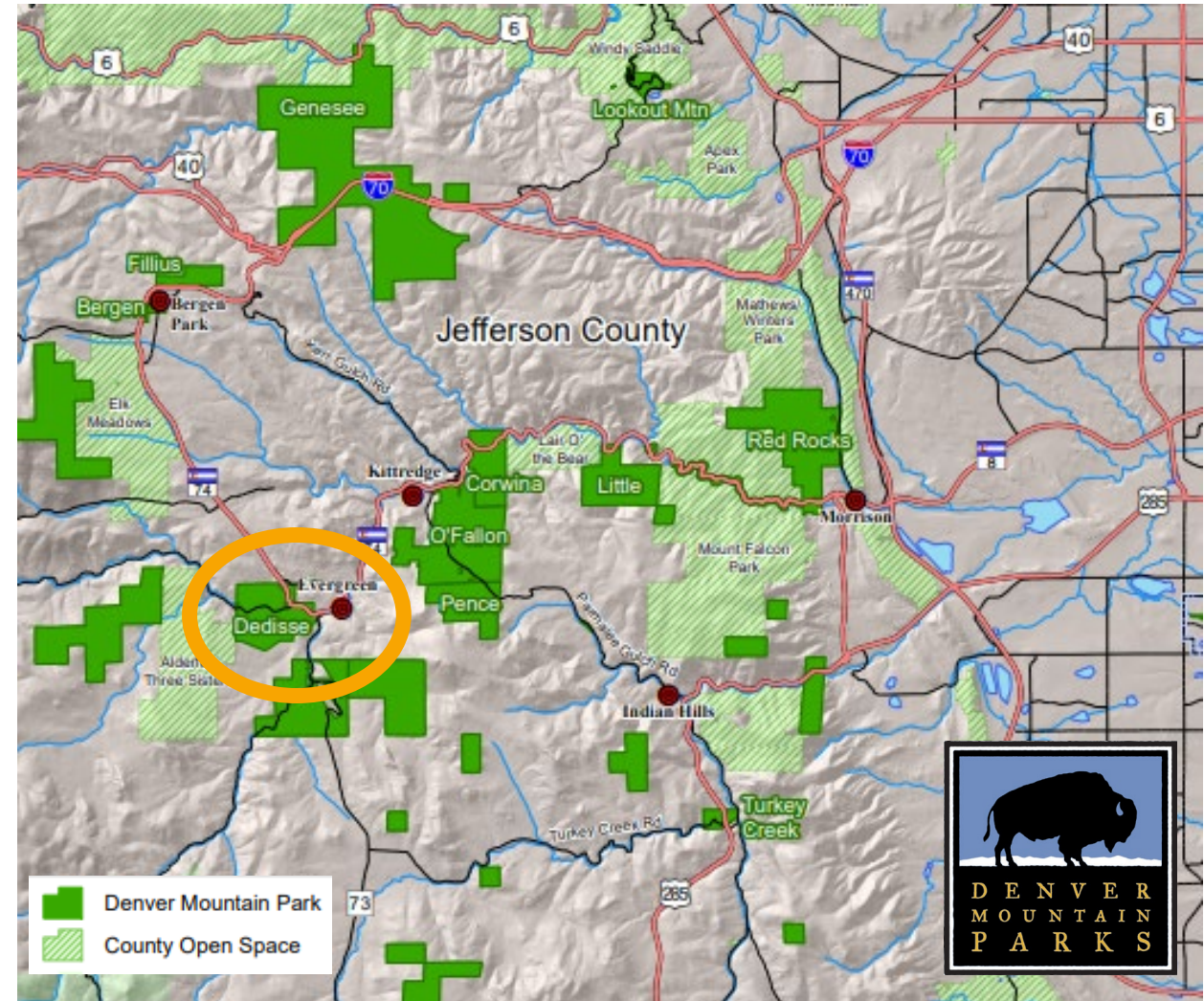
**GAME PLAN**  
for a Healthy City





## AGENDA

- Overview
  - Introduction to process/relationship building
  - Why are we here
    - Clarify and align agreements with new and/or updated:
      - responsibilities and best practices
      - department rules, policies, and procedures
      - executive orders
      - city legal requirements
    - Expand access for Denver residents to Mountain Parks
  - Challenges
- History / background
- Need for new / amended agreements
- Benefits of Partnerships



# HISTORY OF DEDISSE PARK

1920

420-acre Dedisse Park acquired as part of Denver Mountain Park System.

1928

Dam constructed and Evergreen Lake formed for recreational purposes (fishing, boating, ice-skating).

1939

Civilian Conservation Corps (CCC) enrollees constructed the Warming Hut, a designated Denver Landmark.

1960's

Denver dredged the lake, constructed a new bridge and parking facilities, and added lights at the skating area.



# HISTORY OF EVERGREEN METRO DISTRICT (EMD)

1965

City of Denver permit issued to Public Service Company (PSC) of Colorado to install intake pipe in exchange for water to irrigate the golf course.

1970

Denver granted Evergreen Sanitation District the right to install and operate sanitary sewer lines in Dedisse Park in exchange for sanitary service for the Park.

1979

EMD formed and assumed responsibilities of PSC and Evergreen Sanitation with regards to water and sanitary service purposes in Evergreen area.

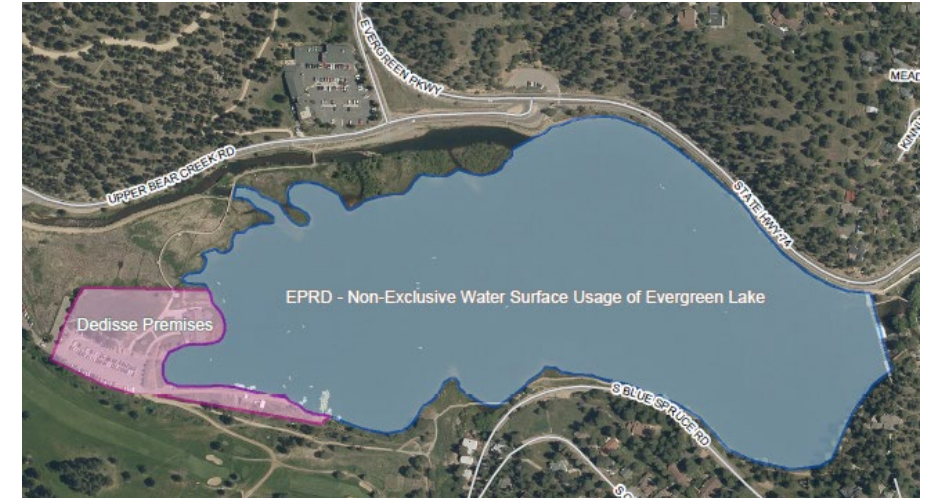
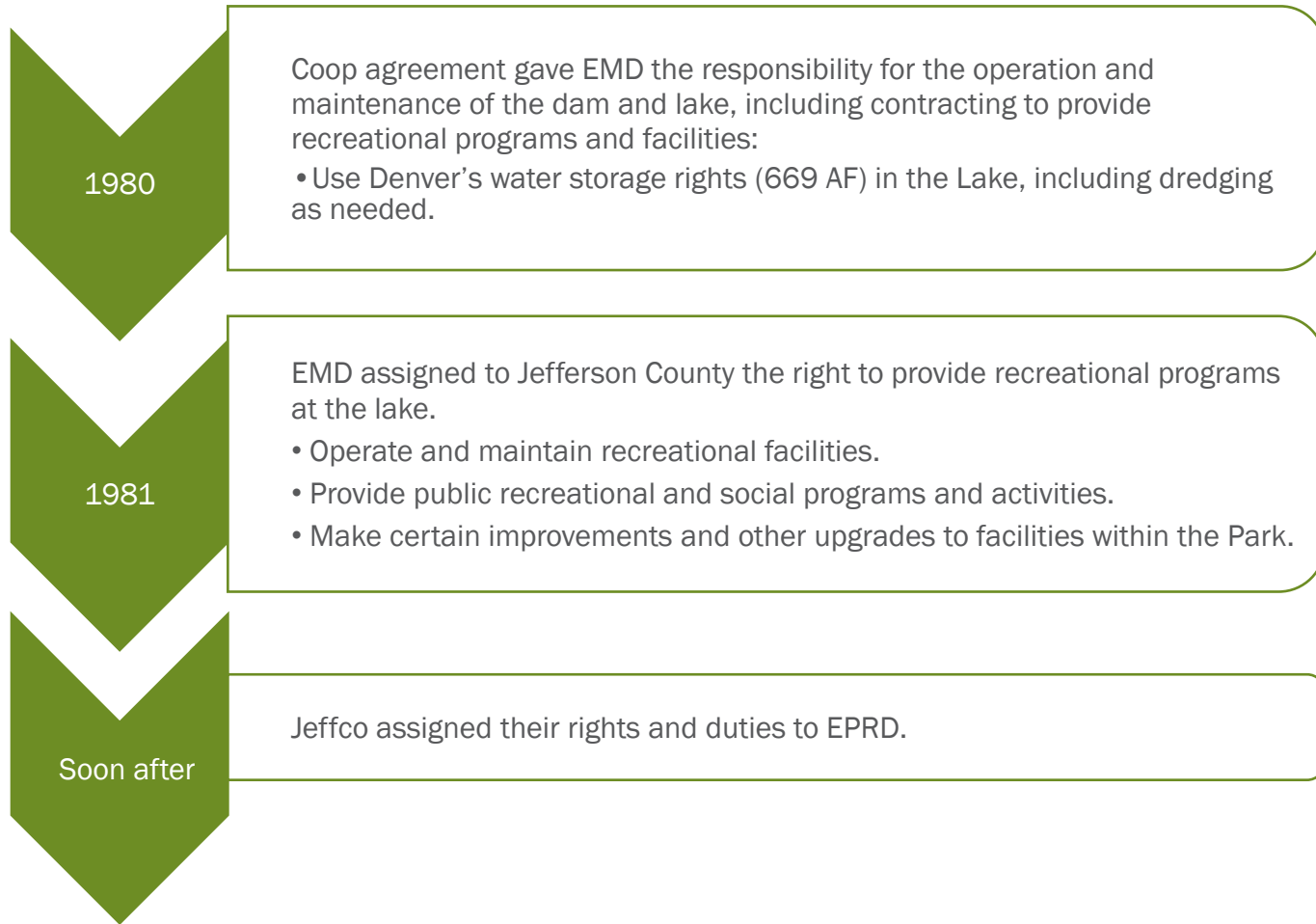
1980

Denver and EMD entered into a cooperative agreement.



- Created in 1979, EMD is a Title 32 political subdivision and quasi-municipal corporation of Colorado.
  - EMD possesses all the powers of a metropolitan district, except fire and Parks and Recreation
- Primary purpose is supplying water and disposal of domestic wastes for public and private purposes.
  - Improve, construct, repair, maintain, and operate facilities, infrastructure and water/waste water systems

# HISTORY OF EVERGREEN PARK AND RECREATION DISTRICT (EPRD)



- EPRD is a Special district and was created in 1969 for purpose of providing recreational opportunities and facilities in the Evergreen area.
  - Mission is to improve the quality of life by providing a wide range of excellent, financially responsible park and recreation amenities and programs while maintaining and enhancing the area’s mountain character

## EVERGREEN METRO DISTRICT

### 1981 - 2023 - 2073



*Gray text indicates original EMD agreement details being restated;*

*Red text indicates EMD details being updated and clarified.*

- Operate, maintain and repair the Dam, inlet and infrastructure to provide water to the Evergreen area including Dedisse Park.
- Use Denver's water storage rights (669 AF) in the Lake, including dredging as needed.
- Operate and maintain the sanitary sewer mains in the Park and the golf course.
- Provide untreated water for irrigation of the park and the golf course and also 5-water and 5-sewer taps.
- Define and separate the relationship between Denver and all parties providing utilities and recreational programs and facilities in the Park, including removing EMD's responsibility to provide recreational programming.
- Clarify the rights, obligations and responsibilities of EMD and Denver with respect to operation and maintenance of Lake and Dam.
- Establish agreement term of 50 years to ensure a sustainable and long-term water source for Dedisse Park, including irrigation for the golf course.

## EVERGREEN PARKS & RECREATION DISTRICT 1981 - 2023 - 2073

*Gray text indicates responsibilities originally assigned to EPRD through EMD;*

*Red text indicates agreement responsibilities being streamlined and clarified.*

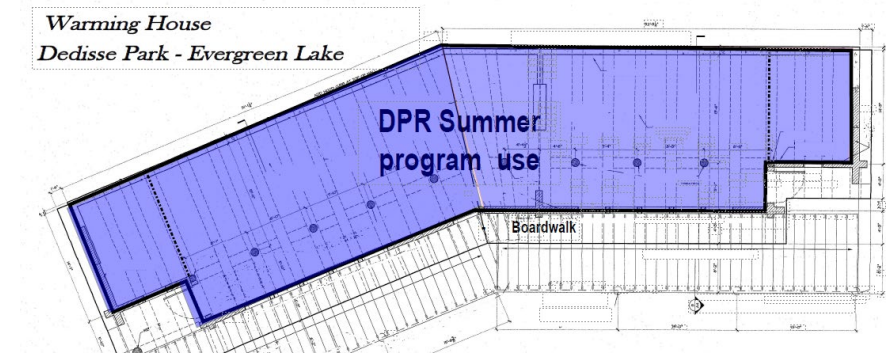


- **Creates direct agreement between CCD and EPRD to define and clarify how EPRD** operates and maintains recreational facilities, including the Lake House, a system of trails and boardwalks, the warming hut, floating docks and restrooms.
- **Strengthens the partnership between EPRD and Denver regarding improvements and programming in a portion of Dedisse Park and Evergreen Lake.**
  - EPRD to provide public recreational and social programs and activities including ice skating, boating, fishing and special events.
  - EPRD to make certain improvements and other upgrades to the facilities within the Park, **including replacement of the Evergreen Lake North Trail.**
- **Establishes a 50 year term to ensure continued programming and recreation remains available to the public**



# GAME PLAN FOR A HEALTHY CITY & OUTDOOR ADVENTURE AND ALTERNATIVE SPORTS PLAN

- Grows and diversifies opportunities for Denver residents to connect to nature through kayaking, SUP and ice skating lesson and other programs.
- Enhances access to Evergreen Lake as a desired winter and summer activity hub with trail and parking lot improvements and also a new accessible dock.
- Expands access to Denver’s history and culture through DPR summer programmatic use of the historic Warming House.
- Strengthens stewardship of Denver’s mountain parks with DPR lead nature series and educational programs including Leave No Trace.
- Reinvestment of a portion of EPRD’s revenue in Dedisse Park, including \$25,000 / yr in capital improvements.







# APPROVAL OF BOTH INTERGOVERNMENTAL AGREEMENTS

- CB 23-0576 – Approves an intergovernmental agreement with the Evergreen Metropolitan District (EMD) setting forth the terms and conditions for EMD to continue to assume responsibility for operation and maintenance of the Evergreen Dam and Lake.
- CB 23-0577 – Approves an intergovernmental agreement with the Evergreen Park and Recreation District (EPRD) for the continued use of a portion of Dedisse Park including Evergreen Lake for recreational activities and programs.

# Questions?

Thank you



**DENVER**  
PARKS & RECREATION

**GAME PLAN**  
for a Healthy City

