



GREAT HALL PROJECT PHASE 2

BIZ COMMITTEE UPDATE

KIM DAY, CHIEF EXECUTIVE OFFICER
CRISTAL TORRES DEHERRERA, CHIEF OF STAFF
MICHAEL SHEEHAN, SENIOR VICE PRESIDENT
NOVEMBER 25, 2020

AGENDA

- Preparing DEN for the future
- Great Hall Project overview
- Phase 1 construction update
 - MWBE progress
 - Workforce development progress
- Phase 2
 - Scope, schedule, budget
 - Security checkpoints
 - Concessions
 - Passenger experience
- Contracts for council review and approval
 - Hensel Phelps overview and contract milestones
 - Self bag drop with Materna

PREPARING DEN FOR THE FUTURE



WHY THIS PROJECT MATTERS

- Improves security of TSA checkpoints
- Meets passenger growth demands
 - Terminal only built for 50 million annual passengers
 - 69 million annual passengers in 2019
 - 39 new gates operational by early 2022; first gates opened last week
- Enhances passenger experience

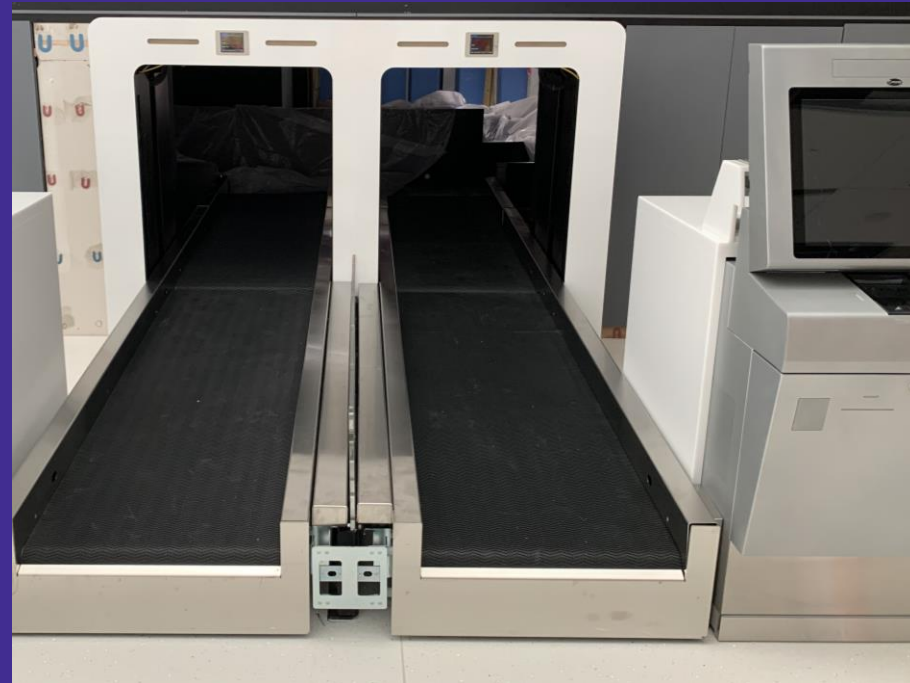


PHASE I CONSTRUCTION UPDATE

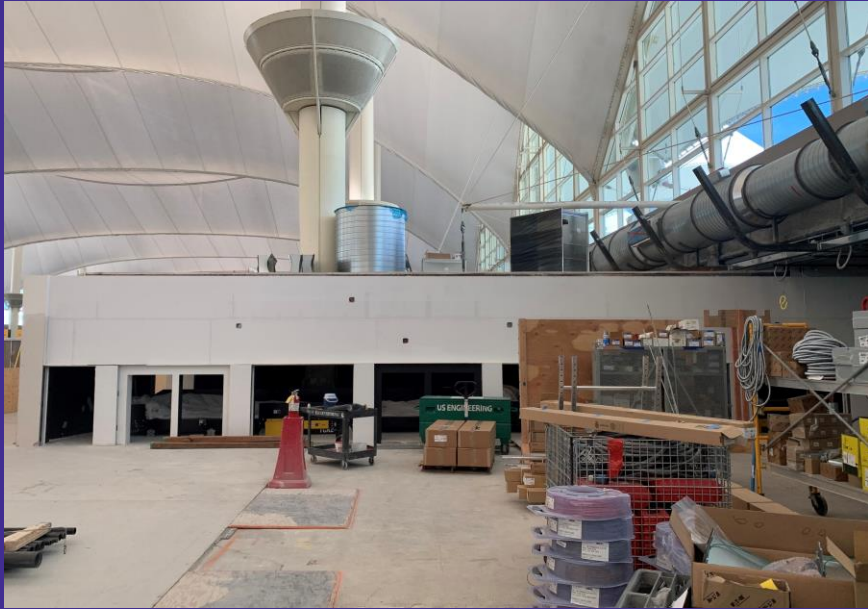
- Within the \$195 million construction budget for this phase
- Completion expected by end of 2021
 - New passenger check-in experience for most passengers
 - Space created for Level 6 west security
 - Structural changes to enable future terminal improvements
 - Creates foundation to accommodate separate concourse expansion projects
- Highlighting MWBE & Workforce development updates today



MOCK-UP OF NEW CHECK-IN KIOSK



TICKETING POD CONSTRUCTION PROGRESS



Ticketing pod development on the east side of Level 6.



Ticketing pod development on the west side of Level 6.

MWBE PROGRESS – PHASE I

Great Hall Project MWBE Inclusion

- Goal: 18% = \$30,662,039
 - Attainment to-date: 13% = \$22,144,806
- Tier 1 subcontractors/suppliers/consultants = 28% MWBE firms

MWBE Business Investment for the Future

- Mentor/Protégé program
 - Initiated Super Sub Session (S3) MWBE capacity building and peer mentoring initiative
 - Established formal HP-to-MWBE Mentor Protégé relationship
- Awarded a 100% MWBE Tier 1 subcontractor opportunity
 - Only certified MWBEs were eligible to bid this opportunity

MWBE PROGRESS – PHASE I

Outreach

- Events hosted to-date: 7
- Industry/community meetings/events attended: 40+
- Activated public-facing dashboard
- Highlighted in Great Hall Project newsletter
- Launched Great Hall webpage (upcoming opportunities, scope award status, MWBE resources)
 - https://www.flydenver.com/about/improvements/great_hall/opportunities

WORKFORCE COMMITMENT AND PROGRESS



Program and Outreach

- Workforce apprentice goal: **5%**
 - Hensel Phelps goal attainment to-date: 10%
- Workforce outreach:
 - Events hosted/co-hosted: **4**
 - Industry/community meetings/events attended: **30+**
- DEN capital project workforce event on October 23rd
- Participated in **6 Construction Careers Now** hiring fairs to-date

WORKFORCE COMMITMENT AND PROGRESS



Project Resources

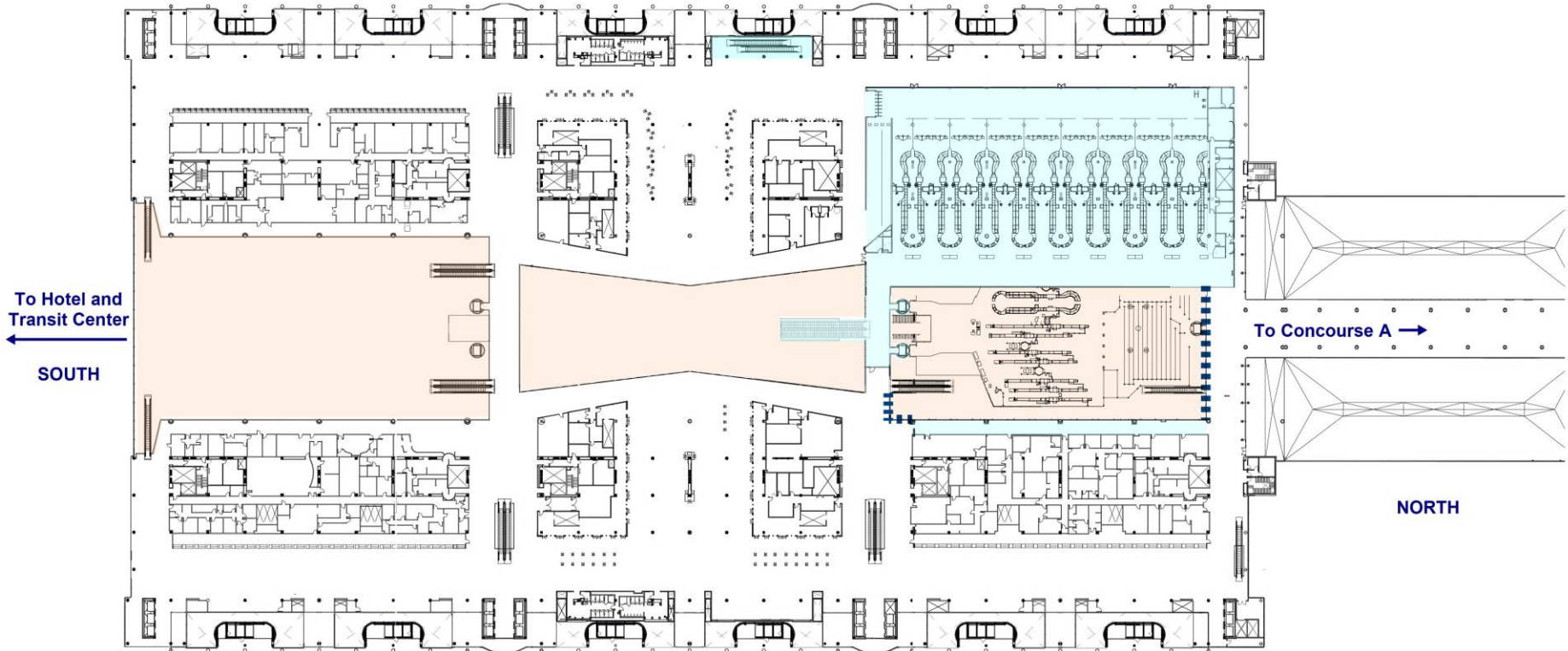
- Dedicated, in-project *Workforce Coordinator*
- Activated apprentice transportation support: RTD/gas cards issued weekly
- Launched workforce webpage (careers, hiring fairs, trainings)
 - https://www.flydenver.com/about/improvements/great_hall/opportunities
- **14** WORKNOW signups and **12** WORKNOW current member champions on the project
- Activated English and Spanish project-specific text line for *WORKNOW* enrollment
 - Text “DEN” to 720-360-1372 to get started

PHASE 2 SCOPE DEVELOPMENT PROCESS

- Collaborated with airlines on Phase 2 scope impacts
 - Operations
 - Passengers
 - Long-term planning
- Communication and solicitation of feedback from City Council
 - Regular briefings
 - Site tours
 - Weekly briefings with Councilman Flynn
 - Monthly Council office hours
 - Participated in virtual constituent meetings for socially distanced outreach

PHASE 2 OVERVIEW

WEST



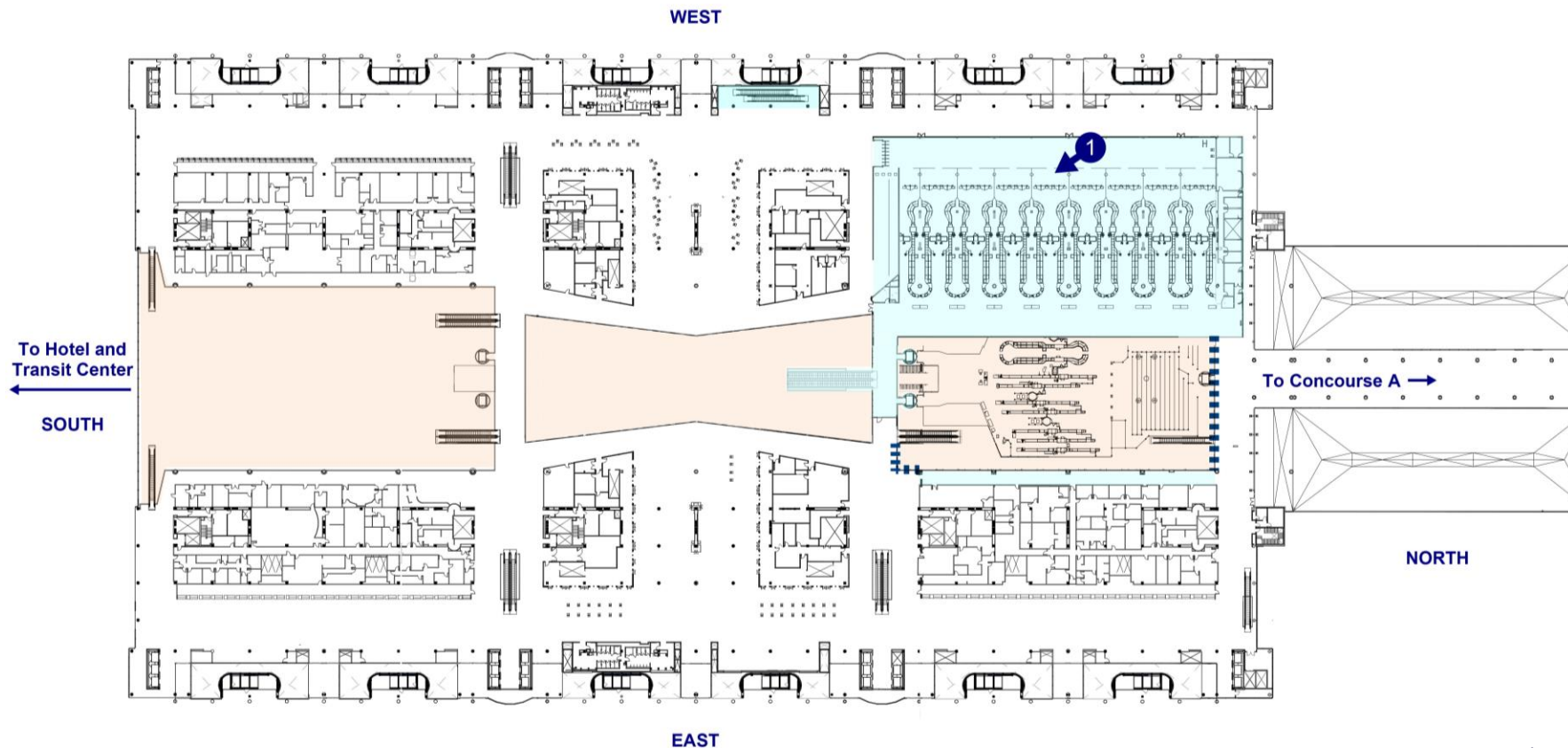
EAST

PHASE 2 OVERVIEW

- Relocates south security checkpoint from Level 5 to Level 6 west
 - Adds five security lanes with the ability to install more efficient technology
- Creates opportunity to activate the vacant south security space on Level 5 with new concessions and improved meeter/greeter space
- North security on Level 5 is maintained with improvements to decrease vulnerability
- A-bridge security is maintained to support overall capacity
- Increases passenger capacity and helps keep the facility balanced



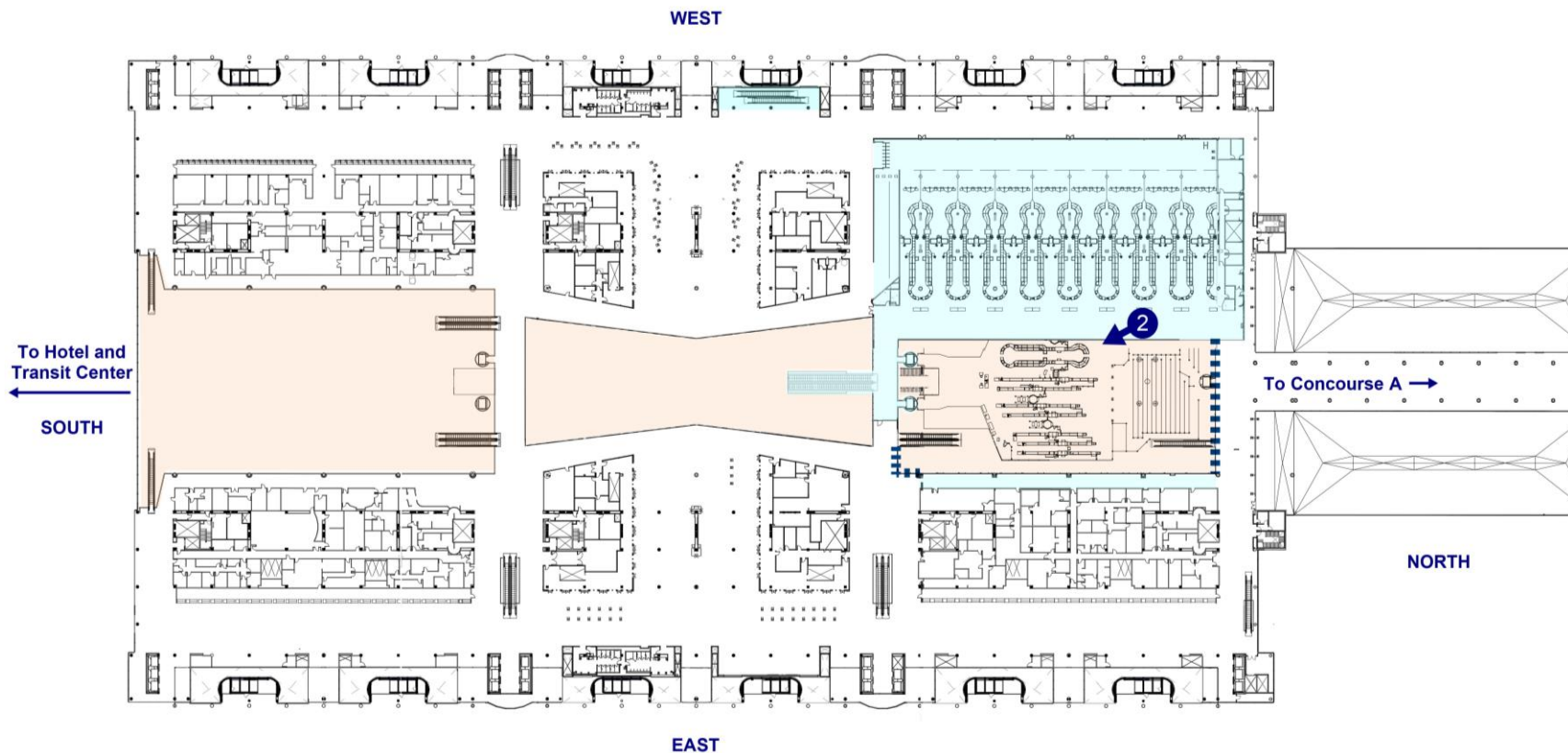
NEW LEVEL 6 CHECKPOINT WITH ENCLOSURE



NEW LEVEL 6 CHECKPOINT WITH ENCLOSURE



LEVEL 6 POST-SECURITY



LEVEL 6 POST-SECURITY



NORTH CHECKPOINT ENHANCEMENTS

- A variety of safety measures utilized for north checkpoint remaining on Level 5, include:
 - Increasing mezzanine security above checkpoints
 - Erecting taller barrier walls
 - Enhancing security system
 - Using detection canines



CONCESSIONAIRES PREVIOUSLY SELECTED

- Former developer awarded six locations in the Great Hall to four concessionaires
- Honoring our commitment to these concessionaires
- Concessionaires will be given locations in either Great Hall or on a concourse
- Outreach on-going to concessionaires to start discussions about potential locations
- Locations finalized after Council approves Hensel Phelps Phase 2 amendment



PASSENGER EXPERIENCE – A KEY FOCUS

- With completion of Phase 2, the project:
 - Improves passenger safety by reducing checkpoint vulnerability
 - Increases passenger capacity
 - Includes new coffee, food & beverage offerings for passengers
 - Activates space where Level 5 south security checkpoint currently exists
 - Leverages proximity to outdoor plaza in front of the Westin



LEVEL 5 SOUTH AFTER SECURITY RELOCATION



HENSEL PHELPS CONTRACT AMENDMENT



Current Contract

\$195 million total contract capacity



Proposed Amendment

Increase of \$170 million – total contract capacity \$365 million

Expires December 31, 2021



Expires April 15, 2024

18% MWBE goal and Workforce Program



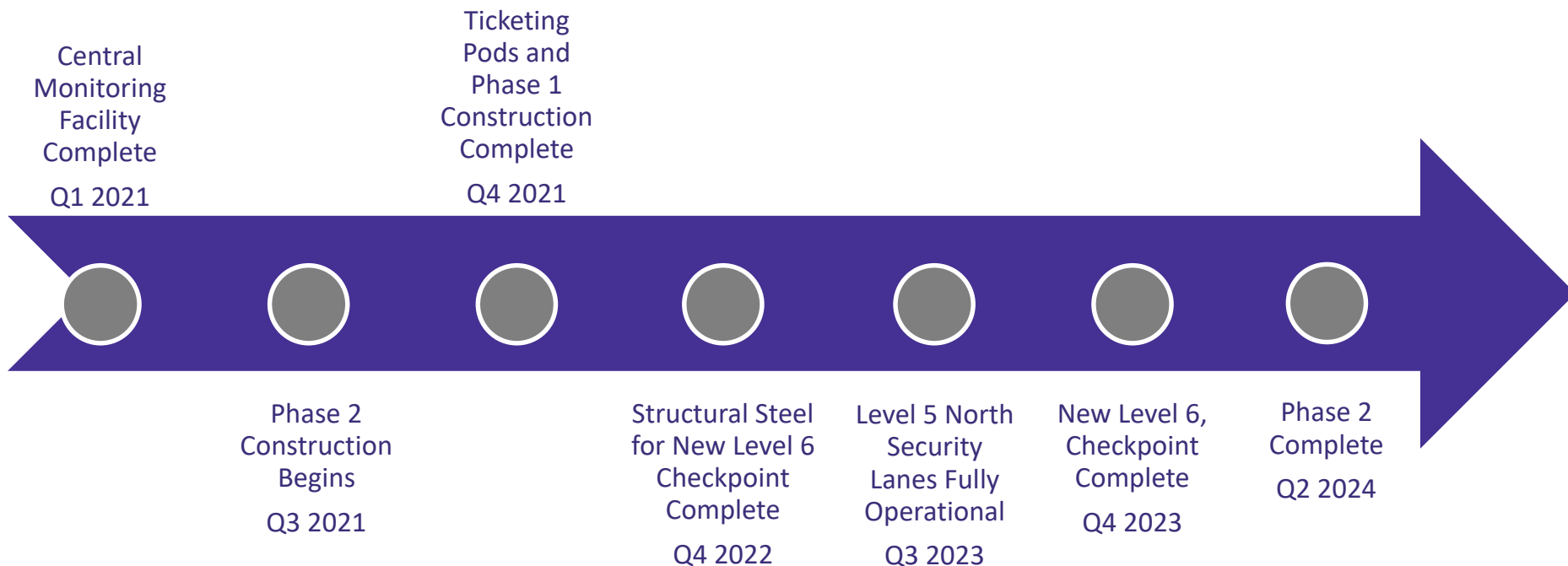
18% MWBE goal and Workforce Program remain

Contains milestones with attached liquidated damages



Revises and adds new milestones

GREAT HALL PROJECT MILESTONES



SELF BAG DROP BY MATERNA

- Contract Maximum – \$20 million
- Contract Term – 3 years
- Includes testing and contingency
- Task Order Based
- Scope includes check-in/self bag drop units, optional equipment, services and software
- Termination for cause, convenience, or no task order for units



DENVER INTERNATIONAL AIRPORT

