

Rocky Mountain Human Services – CCB Mill Levy - Contract Amendment

Safety, Housing, Education & Homelessness Committee

October 11, 2023

Denver Human Services IDDEAS Program

Who We Are



DHS IDEAS

Intellectual and Developmental Disabilities Equitable Access to Services

- Programmatic management and oversight of Denver's I/DD mill levy fund - dedicated to services/support for Denver residents with I/DD
- Guided by community advisory council & stakeholder input
- Current annual revenue of ~ \$24M

RMHS

Denver's Community Centered Board (CCB) – and Case Management Agency (Nov 2023)

- Only legal entity in Denver authorized to complete I/DD determination
- Access Point for Early Intervention (birth – 3) and I/DD services
- Expert in I/DD service delivery system

RMHS CCB Mill Levy Program

Contracted program administered by RMHS and funded by DHS IDEAS

- Wrap around services and supports to individuals with I/DD beyond those covered by Medicaid or other means
- Sole recipient of IDEAS funding until 2018; continues to manage ~ 90% of annual IDEAS revenue
- Programming guided by RMHS Community Advisory Council

Proposed Amendment to RMHS CCB Mill Levy Contract 2021-2023

Increase total 3-year
contract amount from
\$61.5M to \$67.4M

% 8 ↑

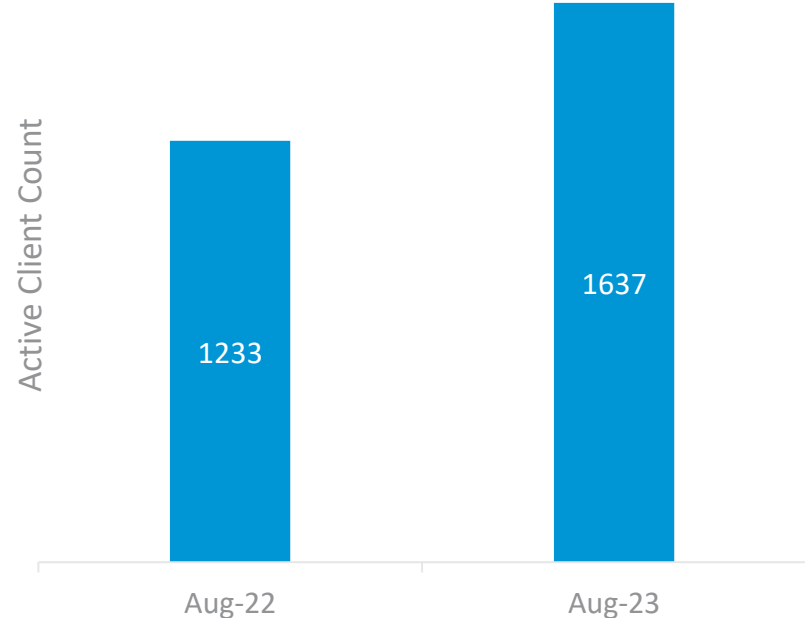
Budget Area	Original '23 Budget	Additional Request	Amended '23 Budget
Client and Family Directed Funds	\$7.4 M	\$3.5M	\$10.9M
Early Intervention Clinical Staffing	\$1.45M	\$180 K	\$1.63M
Early Intervention Intake and Service Coordination	\$308 K	\$594K	\$902K
Admin & Overhead*	\$2.8 M	\$650K	\$3.45M
2023 Contract Term Total	\$21.5M	\$4.9M	\$26.4M

*Total Admin & Overhead is currently 12% of direct expenditures

Early Intervention (EI)

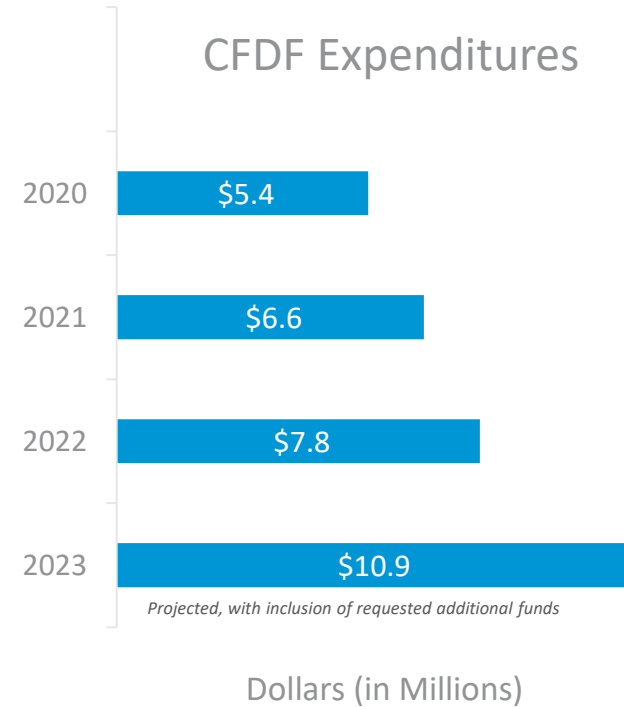
- Individualized, multidisciplinary services and supports for **babies and toddlers** with developmental disabilities / delays
- **Significant impact** on child's development and **improved outcomes** for children, families, and communities
- **Additional funds are needed to:**
 - Respond to unprecedented increase in EI referrals
 - Continue efficient delivery of crucial services amid changes in state-level administration of EI programing

**Babies and Toddlers receiving
EI services through RMHS***
33% increase from '22 to '23



Client and Family Directed Funds

- Empowers Denver residents with I/DD to directly access mill levy dollars to **meet their individual needs** and **live the lives they envision** for themselves
- **Individual requests** specific to an individual need and **mill levy support plans** for services unfunded or underfunded by other sources
- **Additional funds are needed to support rising needs in our community**
 - Housing / basic needs
 - System gaps
 - Behavioral/mental health



Thank you!

DHS

Michaela Hennig, MSW
IDDEAS Program Manager
michaela.hennig@denvergov.org

RMHS

Shari Repinski, MA, MBA
Executive Director
srepinski@rmhumanservices.org

Appendix

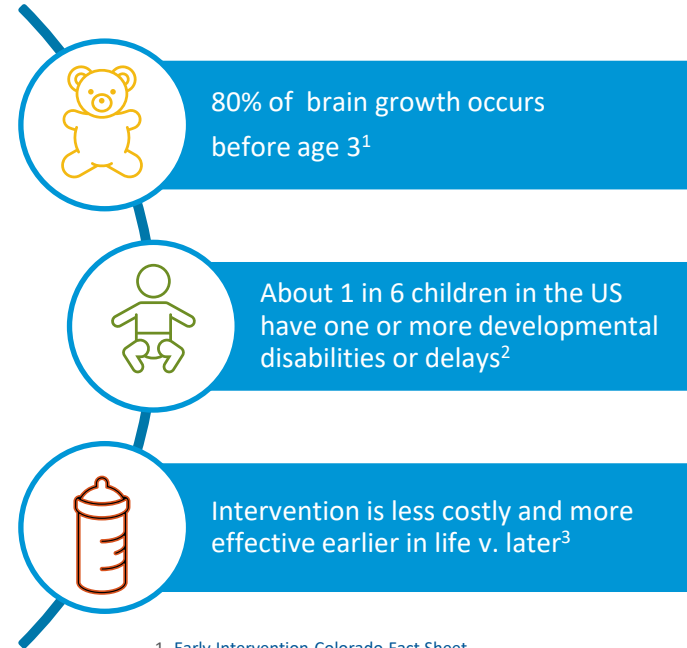
Early Intervention (EI)

RMHS contracts with the State to provide:

- ✓ Evaluations for EI eligibility
- ✓ EI services and coordination for families with children, birth to age 3, who have a delay in their development or qualifying disability

IDDEAS Mill Levy funding *additionally* supports:

- ✓ Efficient, responsive intake process into EI services
- ✓ High-quality EI professional services which exceed limits set by other payers
- ✓ Enhanced person-centered service coordination that provides tailored access to client and family directed funds



1. [Early Intervention Colorado Fact Sheet](#)
2. [Centers for Disease Control and Prevention](#)
3. [Sapiets SJ, Totsika V, Hastings RP. Factors influencing access to early intervention for families of children with developmental disabilities: A narrative review. J Appl Res Intellect Disabil. 2021 May](#)

Client and Family Directed Funds

Individual Requests:

- ✓ Specific to an individual need and demonstrate a benefit to the eligible resident and their wellbeing
- ✓ Examples: *housing stabilization assistance, adaptive equipment, recreation opportunities, help meeting basic needs*

Mill Levy support plans:

- ✓ Additional, often ongoing services that are unfunded or underfunded by Medicaid
- ✓ Examples: *personal care, day programming, services and supports for undocumented individuals*

IMPACT

ELIGIBLE PARENT & ELIGIBLE CHILD FIND RELIEF DURING ROUGH TIMES

Making ends meet solely on SSI income is always challenging, but add unexpected health issues and it becomes impossible. Mill Levy funds helped this family get caught up on past rent and utilities to get back on their feet.



UNDOCUMENTED SINGLE MOM FACES EVICTION & NO OTHER RESOURCES

Eligible teen had COVID 3 times in a few months. His single mom cleans houses and does not have paid leave. Mill levy covered their past due rent and utilities to bridge the gap while she helped her son regain his health.

RMHS 2022 Mill Levy Program Annual Report Page 15

Client Story: Meeting Unique Needs

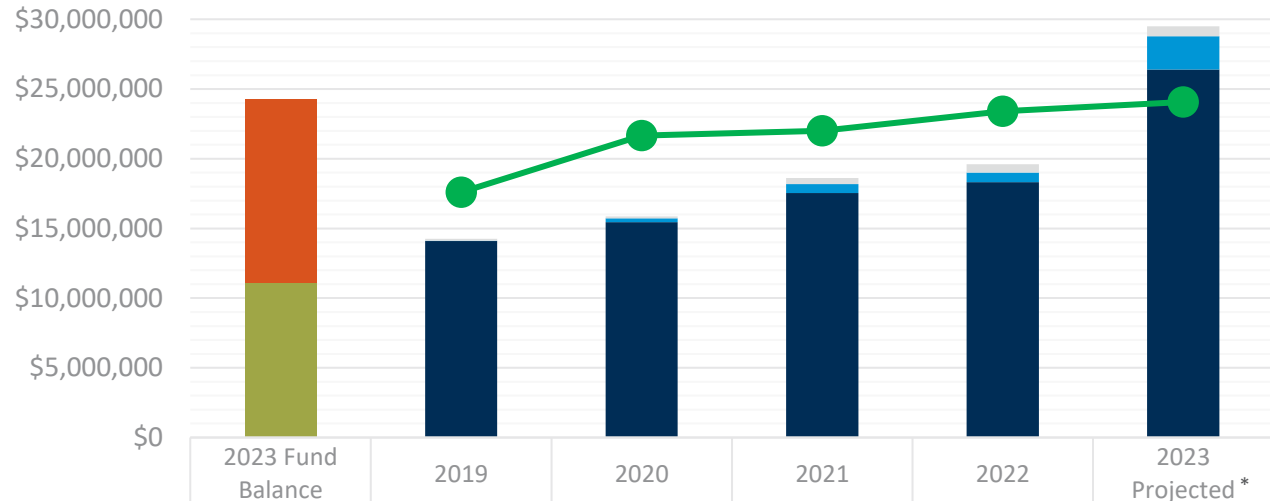
Camila is 7 months and has been diagnosed with Down Syndrome. Recently, Camilla had open heart surgery and has a recovery time of 8 weeks. At first it was very difficult to carry her, and she would spend most of her time just lying down in her bassinet. By accessing Mill Levy, Camilla now has a comfortable swing so she can sit instead of laying down all day. Her mom shared, "I would like to thank RHMS and the Mill Levy department for their funds provided to help out families like mine, and for being part of Camila's journey."



RMHS 2022 Mill Levy Program Annual Report Page 27

IDDEAS Fund Balance, Revenue & Expenditures

Appendix C



*with inclusion of additional requested funds