



Elevate Denver Project Update: Washington Street

September 10, 2025

Meeting Agenda

- Project Scope and Status
- Project Timeline
- GES Citywide Coordination
- Traffic Impacts and Detours
- Discussion

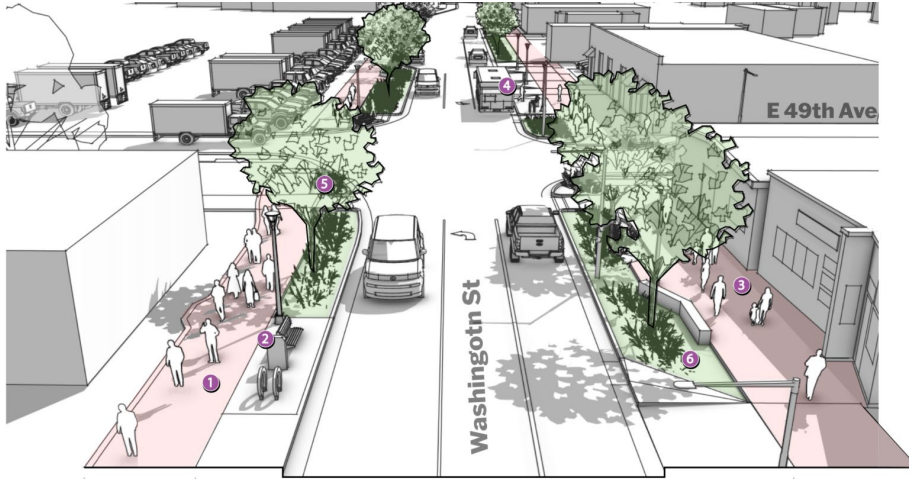
Project Summary

Washington Street – 47th to 52nd Reconstruction

The project includes full roadway reconstruction of Washington Street from 47th Avenue to the City & County line at 52nd. The project will include new roadway, mobility improvements supporting pedestrian and bicycle facilities and utility work required as a part of reconstruction.

- The vision of Washington Street is identified in the Globeville Neighborhood Plan as a priority Transformative Project, with a goal “to make Washington Street an attractive corridor that creates a positive sense of place, attracts private reinvestment, and better accommodates all transportation modes.” As a new entrance to the National Western Campus, a connection to I-70 and Brighton Boulevard and the 38th & Blake Station, link to Adams County and a main street to the Globeville Neighborhood, it has the potential to establish a neighborhood identity and catalyze redevelopment and reinvestment in the area.
- As a major corridor and neighborhood main street, the project aligns with Mayor, council, agency and community priorities.
- Due to existing conditions along the street, the project is not a candidate for phased construction or implementation.
- Acquisition for expanded right-of-way is anticipated. The width of the road, including recommended with and property impacts, is being evaluated as a part of the 2016-17 planning and conceptual design effort. The overall right-of-way and possibly adjacent properties can be significantly improved to meet the needs of multimodal users along the corridor.

Washington Street Project Scope



Full roadway reconstruction of Washington Street from 47th Avenue to 52nd Avenue. Major elements include:

- **Improved Travel**

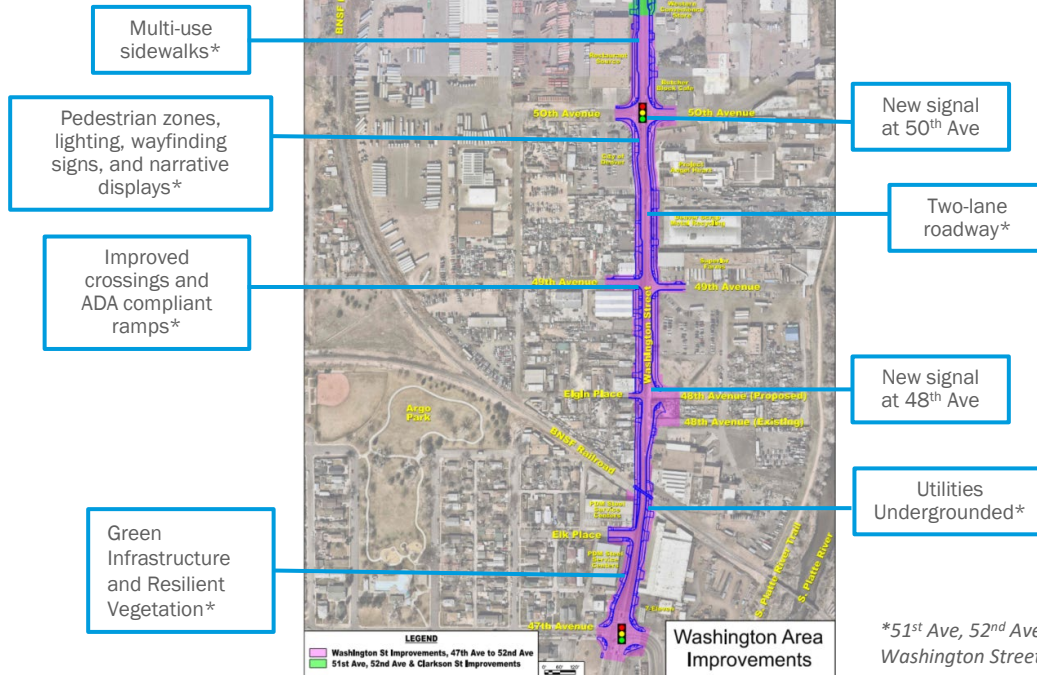
- Two-lane roadway design
- New signals at 48th and 50th Avenues
- Undergrounded utilities

- **Inviting Amenities, Lively Streets & Interpretative Panels**

- Multi-use sidewalks (pedestrian and bike use), improved crossings and ADA compliant ramps
- Pedestrian zones, lighting, and wayfinding signs
- Historical and environmental narrative displays

- **Green Infrastructure and Resilient Vegetation**

Washington Street Improvements



*51st Ave, 52nd Ave & Clarkson St Improvements are not in the Washington Street Improvements contract

* Throughout the corridor

Project Status & Updates



Washington Street Rendering

PROJECT STATUS

- Design complete
- Early demo complete and utility relocations underway
- City Council to approve SEMA Construction contract for \$22.7M
- Mobilization expected Q4 2025 (Washington St)

MBE/WBE and DBE

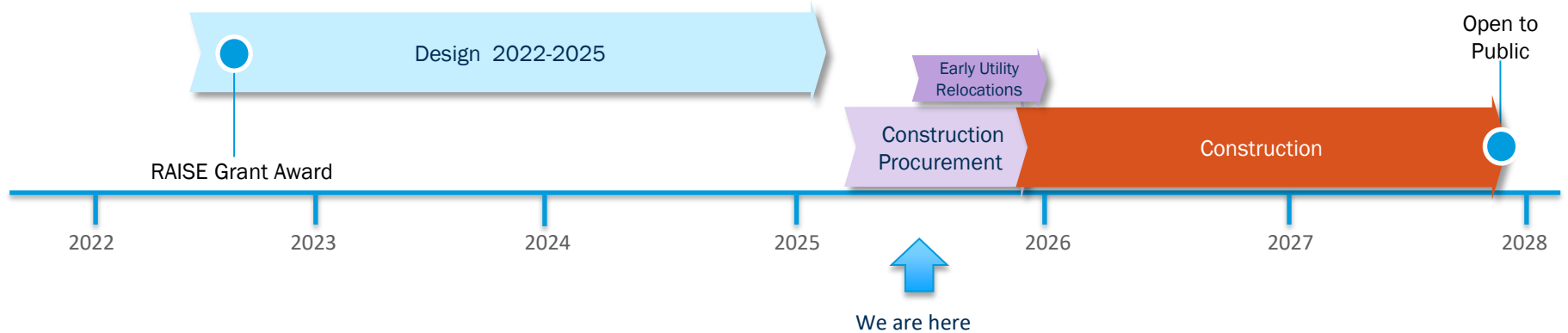
- Design MBE/WBE Participation of 23% of \$7.48M contract amount
- Construction DBE Participation Goal of 19% of \$22.7M contract amount

PROJECT FUNDING

- Elevate Bond Funding: \$20M
- Elevate Sidewalk Funding: \$1.3M
- Grant: \$12M
- CIP: \$5M
- Other: \$2.3M

**Total
Budget
\$40.6 M**

Washington Street Project Timeline



Elevate Denver Bond Program

The City ran a regional input-output economic model to forecast direct, indirect, and induced impacts as a result of Elevate Denver's \$937 million investment.

PROJECTED ECONOMIC IMPACT

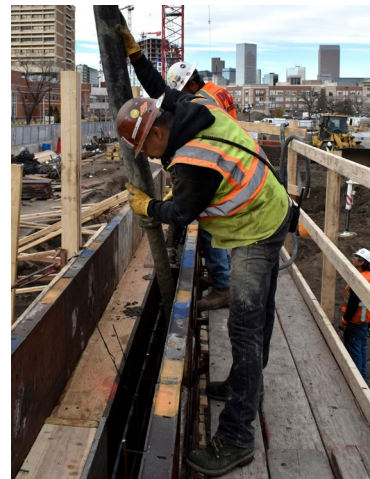
**12,950
Jobs**



**\$862M in
Labor
Income**



**\$1.8B in
Economic
Output**

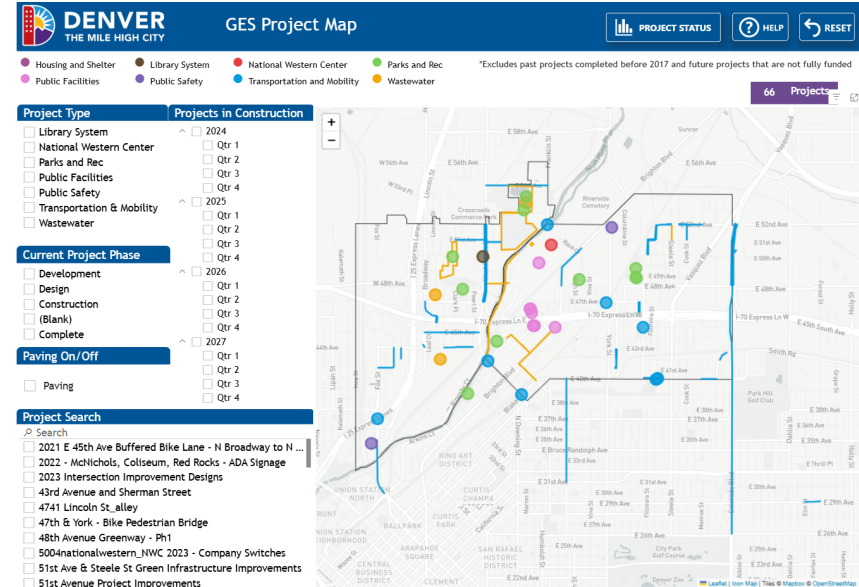


DENVER
GO BOND

Globeville Elyria-Swansea (GES) Citywide Coordination

Going the extra mile for this community

- Multi-departmental collaboration on projects occurring with the GES geographic area
- Weekly meeting of Public Information staff from each project
- All public outreach is coordinated via this program



GES Project Map: [Link](#)

Construction Impacts

Contractor will implement a **robust communication plan** in coordination with the GES program to keep the community informed of the project, schedule and impacts

Contractor is required to keep **one lane of traffic open in each direction** throughout the project

WHAT TO EXPECT:



- Full closures and partial closures could occur as coordinated between the contractor and City Traffic Engineer
- Business access will be maintained during business hours
- Access to all roadways, side streets, alleyways, driveways, and will be maintained during construction unless coordinated with the owner (driveways) and/or City Traffic Engineer

Next Steps

Washington Street Council Approval of Construction Contract

- South Platte River Committee – September 2025
- Mayor Council – September 2025
- City Council 1st Reading – October 2025
- Notice to Proceed – October/November 2025

Groundbreaking

- TBD and will be coordinated with Council and stakeholders



Discussion



Thank you