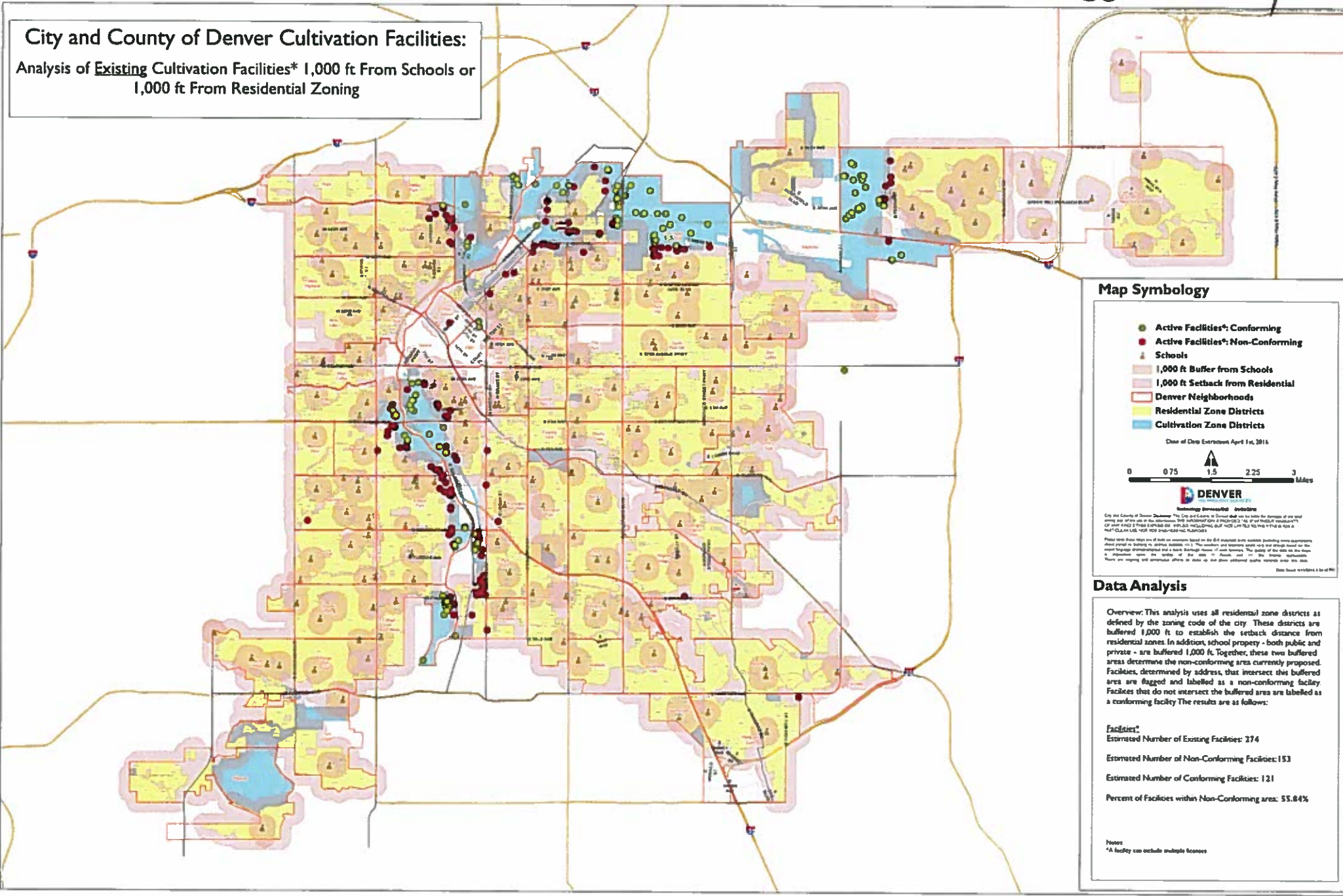


City and County of Denver Cultivation Facilities:
Analysis of Existing Cultivation Facilities* 1,000 ft From Schools or
1,000 ft From Residential Zoning



Map Symbology

- Active Facilities*: Conforming
- Active Facilities*: Non-Conforming
- ▲ Schools
- 1,000 ft Buffer from Schools
- 1,000 ft Setback from Residential
- Denver Neighborhoods
- Residential Zone Districts
- Cultivation Zone Districts

Date of Data Extraction: April 1st, 2016



City of Denver Planning Department
 The City and County of Denver shall not be liable for damages of any kind arising out of the use of this information. THE INFORMATION IS PROVIDED ON AN "AS IS" BASIS WITHOUT WARRANTY OF ANY KIND, EXPRESS OR IMPLIED, INCLUDING BUT NOT LIMITED TO THE IMPLIED WARRANTIES OF MERCHANTABILITY AND FITNESS FOR A PARTICULAR PURPOSE.
 Please note that maps are of their own nature based on the best available data available. Building area boundaries shown are not intended to define legal boundaries. The number and location of schools and other facilities shown are not intended to be a guarantee of the accuracy of the data. The City of Denver is not responsible for any errors or omissions that may appear on this map.
 Date Issued: 4/1/2016 1:10:10 PM

Data Analysis

Overview: This analysis uses all residential zone districts as defined by the zoning code of the city. These districts are buffered 1,000 ft to establish the setback distance from residential zones. In addition, school property - both public and private - are buffered 1,000 ft. Together, these two buffered areas determine the non-conforming area currently proposed. Facilities, determined by address, that intersect this buffered area are flagged and labelled as a non-conforming facility. Facilities that do not intersect the buffered area are labelled as a conforming facility. The results are as follows:

- Facilities***
- Estimated Number of Existing Facilities: 274
- Estimated Number of Non-Conforming Facilities: 153
- Estimated Number of Conforming Facilities: 121
- Percent of Facilities within Non-Conforming areas: 55.84%

*A facility can include multiple addresses